

INDEX MAP  
Scale 1"=600'  
TRACT No 23174  
P.C. 4331

**BENCH MARK**  
Valley View Ave. and Rosecrans Ave 100's of the C.L. of Valley View Ave. and 1/4 of the C.L. of Valley View Ave. Set in Concrete 15" below the street surface in a wet cut through the pavement and protected by a cast iron cover marked County Surveyor Monument a 5th County Surveyor Monument marked "B.M. F.G. 1951 R.E.329" County Surveyor's F.B. 1202-11 1952 Adj. El. 110.915.

**NORWALK BLDG. DIST. NO. 42**

- NOTES**
- PROVIDE STAKES ON THE PROPERTY LINE OR PROPERTY LINES PRODUCED AT RIGHT ANGLES TO THE SEWER LINE AT THE CENTER LINE OF EACH MANHOLE.
  - NO REPRESENTATIVE OF THE COUNTY ENGINEER WILL SURVEY OR LAYOUT ANY PORTION OF THE WORK.
  - THE OWNER OR HIS AUTHORIZED REPRESENTATIVE SHALL FURNISH THE COUNTY ENGINEER WITH GRADE SHEETS AND STATIONING FOR ALL HOUSE LATERALS AND T BRANCHES AND SHALL PROVIDE STAKES FOR THESE AT THESE POINTS LOCATIONS WITH STATIONING PLAINLY MARKED. ANY CHANGE IN LOCATION SHALL BE REQUESTED IN WRITING BY THE OWNER OR HIS REPRESENTATIVE.
  - NO REVISIONS SHALL BE MADE IN THESE PLANS WITHOUT THE APPROVAL OF THE COUNTY ENGINEER.
  - USE STANDARD MANHOLE 12" V'S AND COVERS, S.P. 117, EXCEPT AS NOTED.
  - USE STANDARD STRENGTH PIPE EXCEPT AS NOTED.
  - USE CEMENT MORTAR FOR ALL VITRIFIED CLAY PIPE JOINTS.
  - RESURFACE ALL TRENCH WITHIN PAVED AREA TO MEET L. A. COUNTY ROAD DEPT. OR CALIF. STATE HIGHWAY DEPT. REQUIREMENTS IN ACCORDANCE WITH PERMITS.
  - ENCASE FOUR FEET OF SEWER AT POINTS OF INTERFERENCE WITH POLES, S.A. 119.
  - HOUSE LATERALS TO BE CONSTRUCTED WITH INVERTS AT PROPERTY LINE 6" FEET BELOW CURB GRADE EXCEPT AS NOTED.
  - ALL STRUCTURES SHALL BE BRICK SEWER STRUCTURES, S.A. 104, EXCEPT AS NOTED.
  - FOR ALLOWABLE LEAKAGE TEST USE FORMULA NO. ONE SPEC. SEC. 54
  - MANHOLE TOPS IN UNIMPROVED RIGHTS-OF-WAY TO BE 6" ABOVE FINISHED GRADE.
  - THE PRIVATE ENGINEER IS TO FURNISH THE HOUSE LATERAL DEPTH AT THE PROPERTY LINE BELOW THE (TOP OF CURB ELEVATION/ELEVATION OF CENTERLINE OF STREET) (ELEVATION OF CENTERLINE OF ALLEY) (ELEVATION OF CENTERLINE OF SEWER RIGHT-OF-WAY) FOR EACH HOUSE LATERAL ON THE SAME SHEET.
  - (a) No construction will be permitted in filled areas unless acceptable certification is submitted to the Construction Division of the County Engineer's Department that compaction is greater than 90%.
  - (b) If compaction is less than 90%, the sewer must be encased and 30-40% (c) If compaction is between 90% and 95%, encasement is not required. However, joint compound must be substituted for cement mortar for all joints in filled areas.

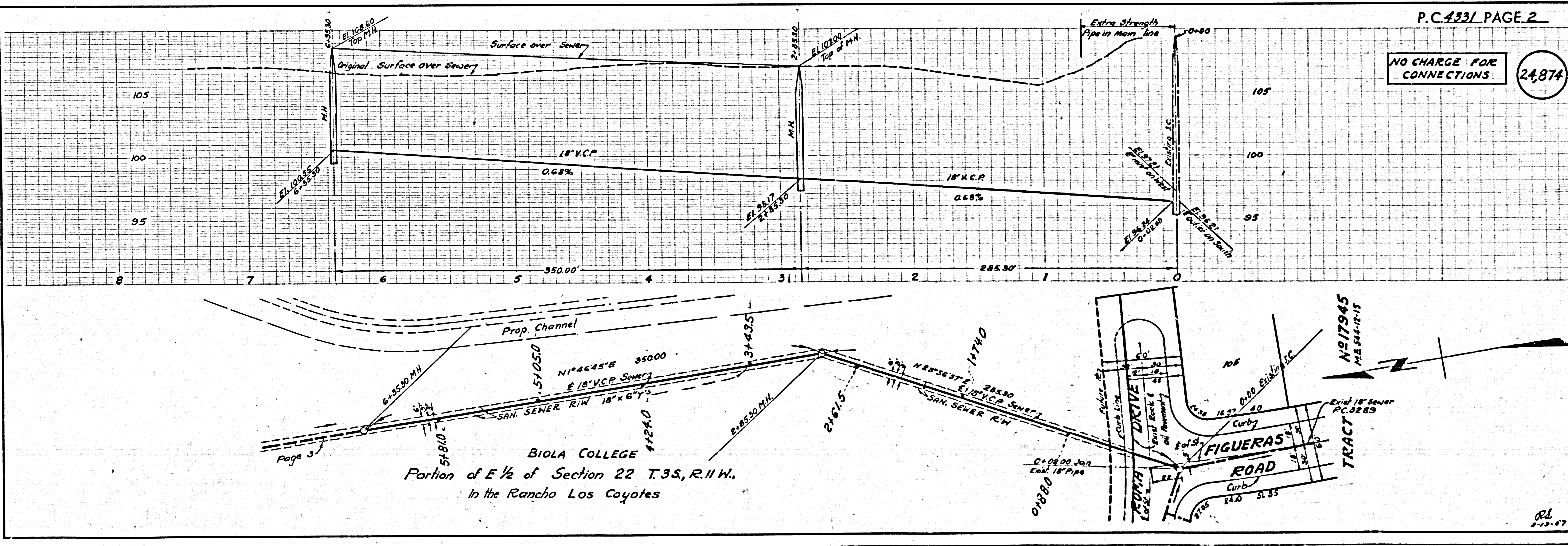
**NO CHARGE FOR CONNECTIONS**  
Lester 5-11-57

PROFILE ALIGNMENT AND GRADE OF **P.C. 4331**  
**SANITARY SEWERS** PAGE **1**  
TO BE CONSTRUCTED IN  
**TRACT No 23174** (24,873)

**PRIVATE CONTRACT NO. 4331**  
W.S. 34  
- 6 SHEETS; 12 PAGES  
SCALE: VERT. 1"=6' HORIZ. 1"=60'  
FEBRUARY, 1957  
PREPARED IN THE OFFICES OF  
**ADAMS AND ELLS ENGINEERS**  
By *John R. Slaughter*  
REG. C. E. NO. 4819  
FOR LEGEND SEE PLAN NO. S-A-64

**NOTE:**  
GRADES TO WHICH THIS IMPROVEMENT IS TO BE CONSTRUCTED ARE SHOWN ON PLANS AND PROFILES. GRADE POINTS FOR TOP OF CURB, CENTER LINE OF STREET, OR CENTER LINE OF ALLEYS ARE SHOWN BY CIRCLES ON PROFILES AT ALL POINTS BETWEEN DESIGNATED POINTS THE GRADE SHALL BE ESTABLISHED SO AS TO CONFORM TO A STRAIGHT LINE DRAWN BETWEEN SAID DESIGNATED POINTS.  
ELEVATIONS ARE IN FEET ABOVE U.S.C. & G.S. MEAN SEA LEVEL DATUM OF 1929.  
THIS DRAWING AND THE DATA HEREON ARE HEREBY MADE A PART OF THE SPECIFICATIONS.  
WORK SHALL BE CONSTRUCTED ACCORDING TO SPECIFICATIONS ON FILE IN THE OFFICE OF THE COUNTY ENGINEER AND SHALL BE INSPECTED ONLY IN THE PRESENCE OF THE COUNTY ENGINEER.  
BEFORE WORK CAN BE STARTED, THE CONTRACTOR MUST OBTAIN A PERMIT TO EXCAVATE IN COUNTY STREETS FROM THE L. A. COUNTY ROAD DEPT., 100 W. 3RD ST. CIVIL ENGINEER, ROOM 324 SAN AMBROSIO BUILDING, 212 SO. BROADWAY SUFFICIENT TO COVER THE COST OF CONSTRUCTION INSPECTION AND RECORD PLANS.  
APPROVAL OF THIS PLAN BY THE COUNTY OF LOS ANGELES DOES NOT CONSTITUTE A REPRESENTATION AS TO THE ACCURACY OF THE LOCATION OR THE EXISTENCE OR NON-EXISTENCE OF ANY UNDERGROUND UTILITY PIPES OR STRUCTURES WITHIN THE LIMITS OF THIS PROJECT THIS NOTE APPLIES TO ALL PAGES.  
IF WORK IS TO BE DONE ON A STATE HIGHWAY, A PERMIT MUST BE OBTAINED FROM THE STATE OF CALIFORNIA, DIVISION OF HIGHWAYS, 120 SOUTH SPRING STREET.

**COUNTY OF LOS ANGELES, CALIFORNIA**  
APPROVED, JOHN A. LAMBE, COUNTY ENGINEER  
APPROVED, A. M. BAWN, CHIEF ENGINEER  
CO. SAN DIST. NO. 18  
By *A. H. Hughes* (Sanitation Engineer) By *P. P. Bennett* (Office Engineer)  
CHECKED BY *A. K. Onda* 5-11-57  
OFFICE OF COUNTY ENGINEER, REG. C. E. NO. 3406



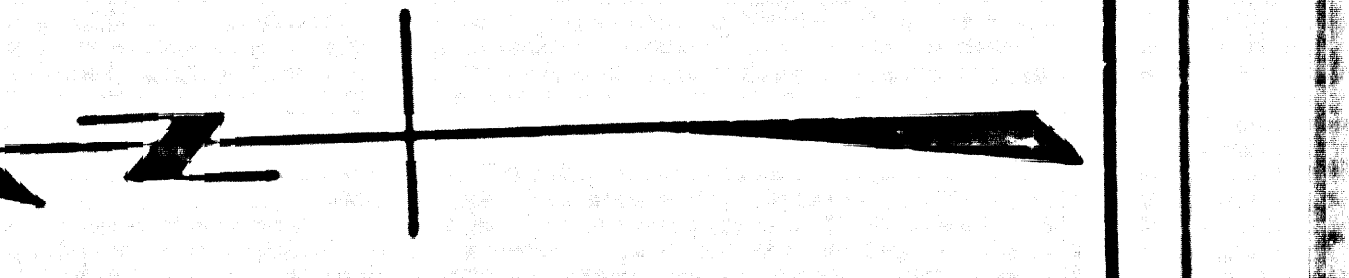
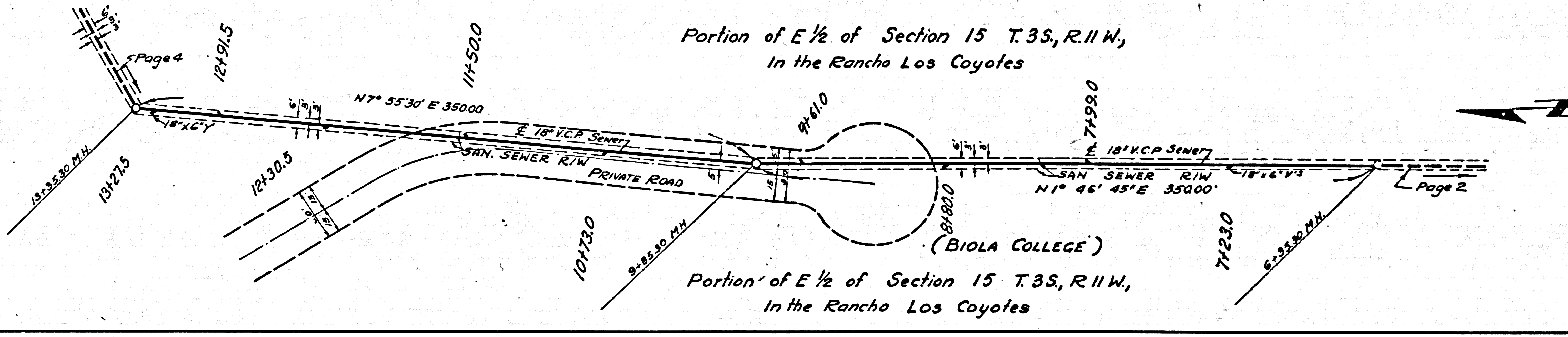
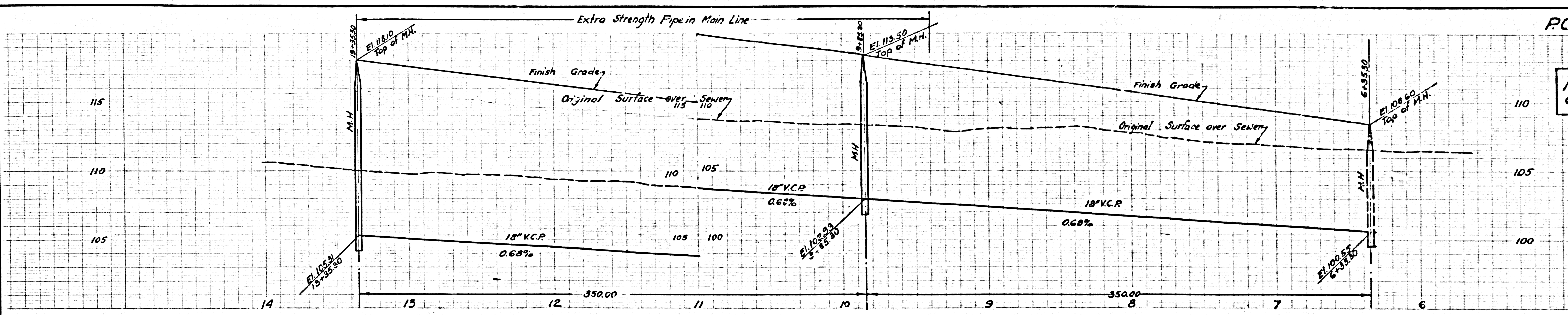
**NO CHARGE FOR CONNECTIONS** (24,874)

**BIOLA COLLEGE**  
Portion of E 1/2 of Section 22 T.3S., R.11W.,  
in the Rancho Los Coyotes

RL  
5-11-57

NO CHARGE FOR CONNECTIONS

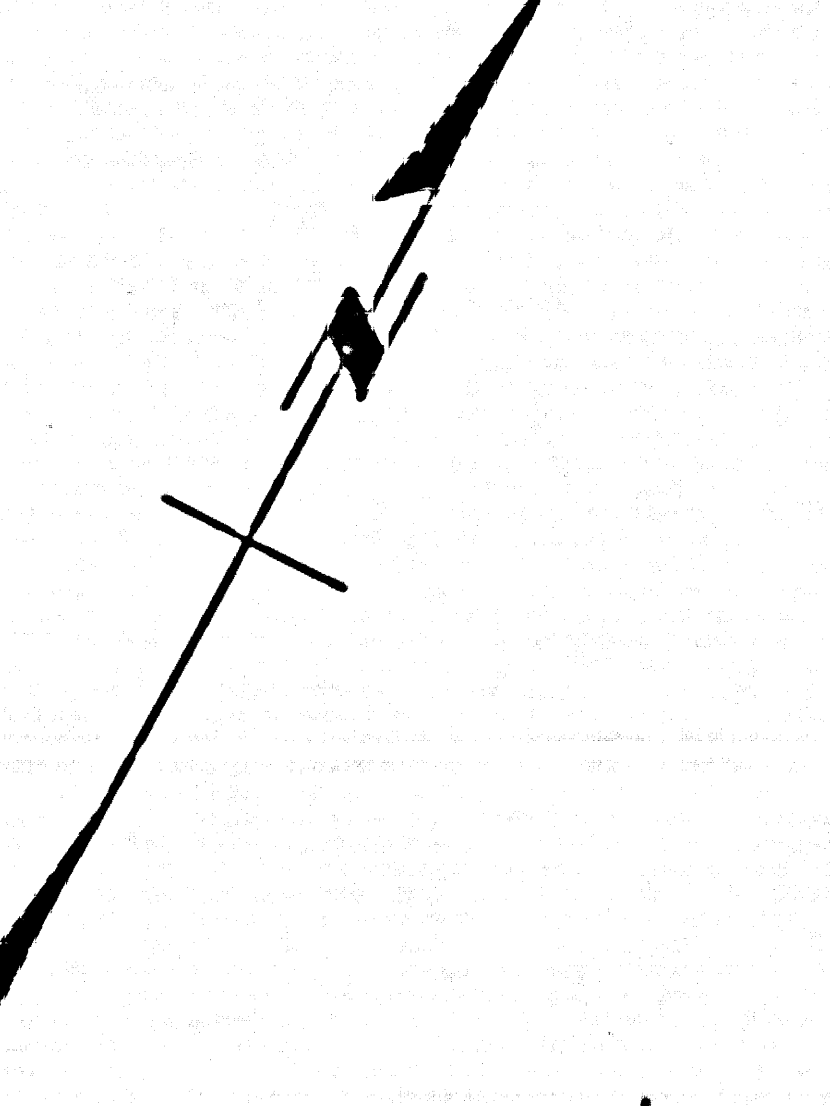
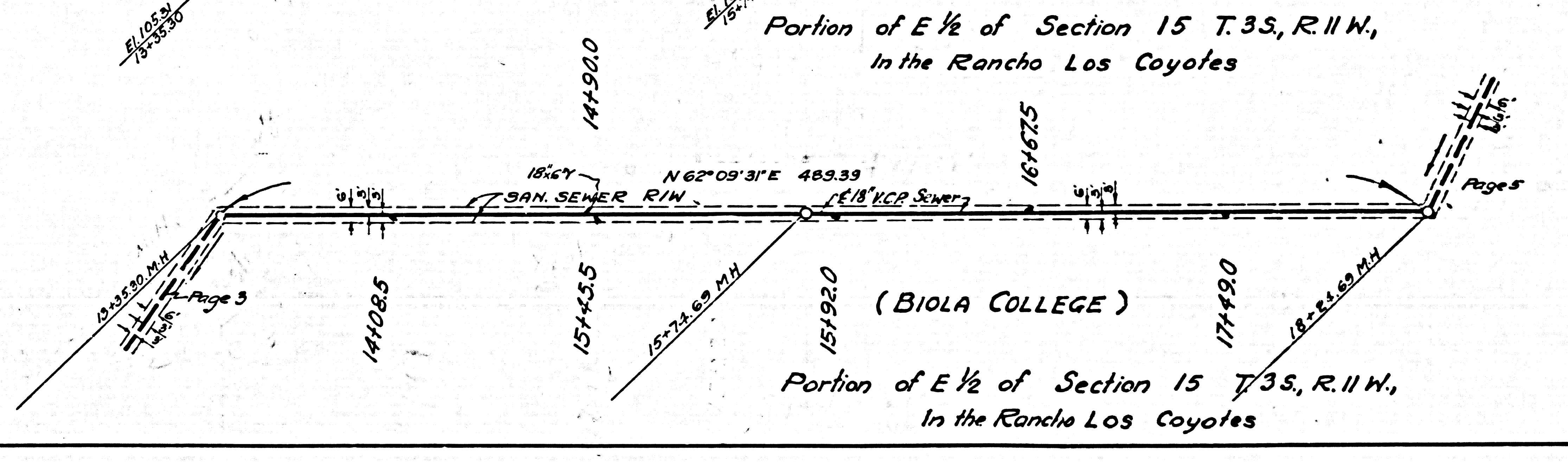
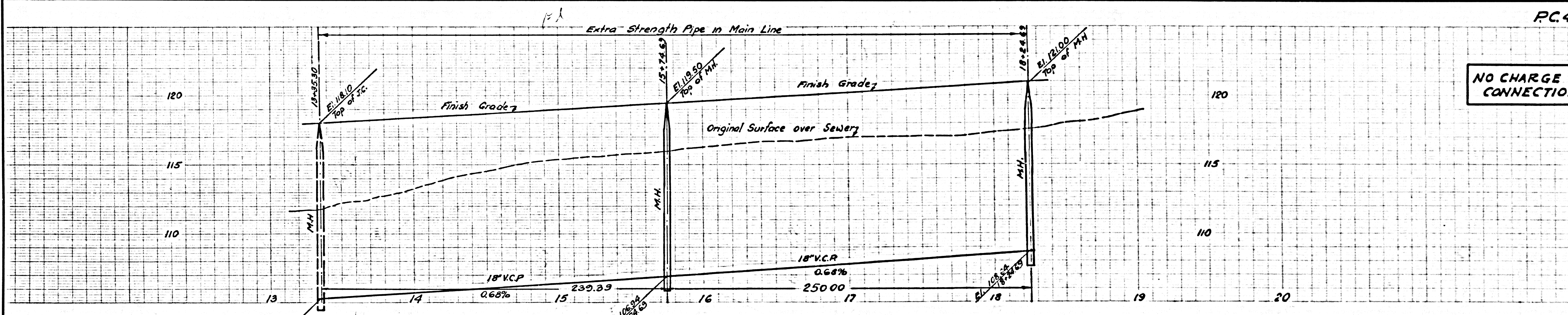
24875



PA 117-57

NO CHARGE FOR CONNECTIONS

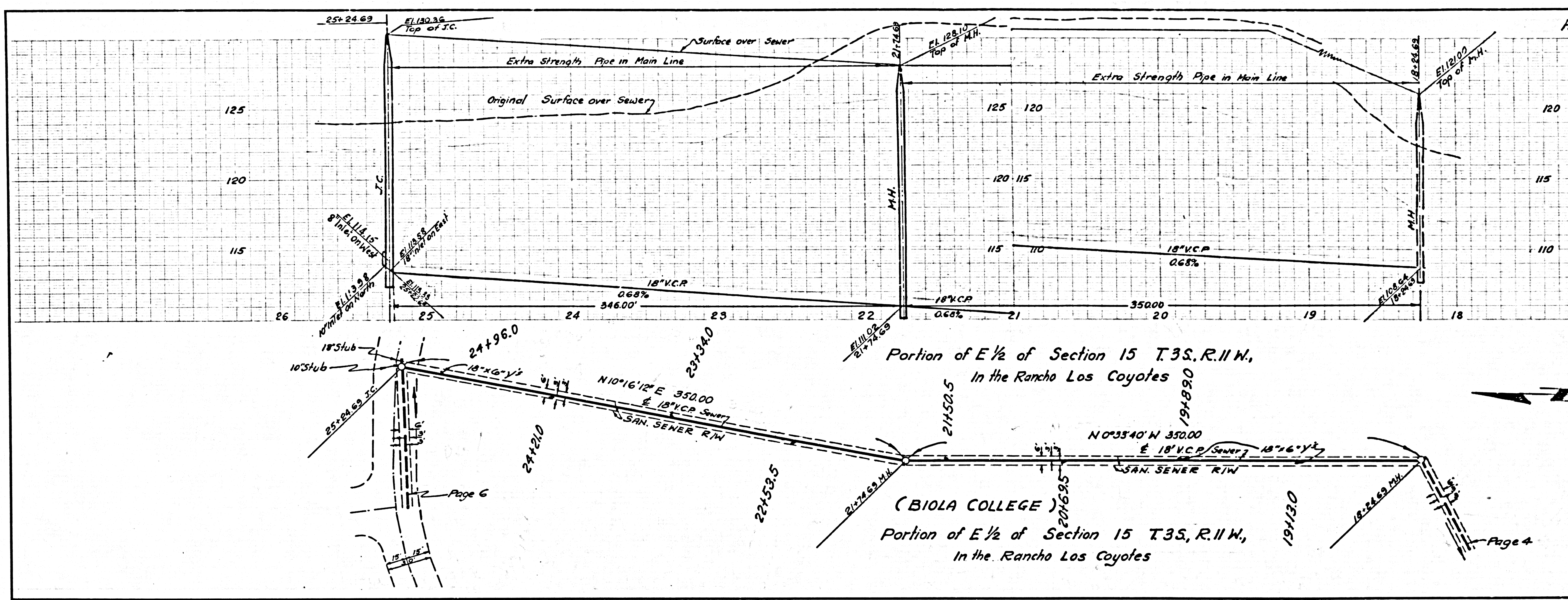
24876



PA 117-57

NO CHARGE FOR CONNECTIONS

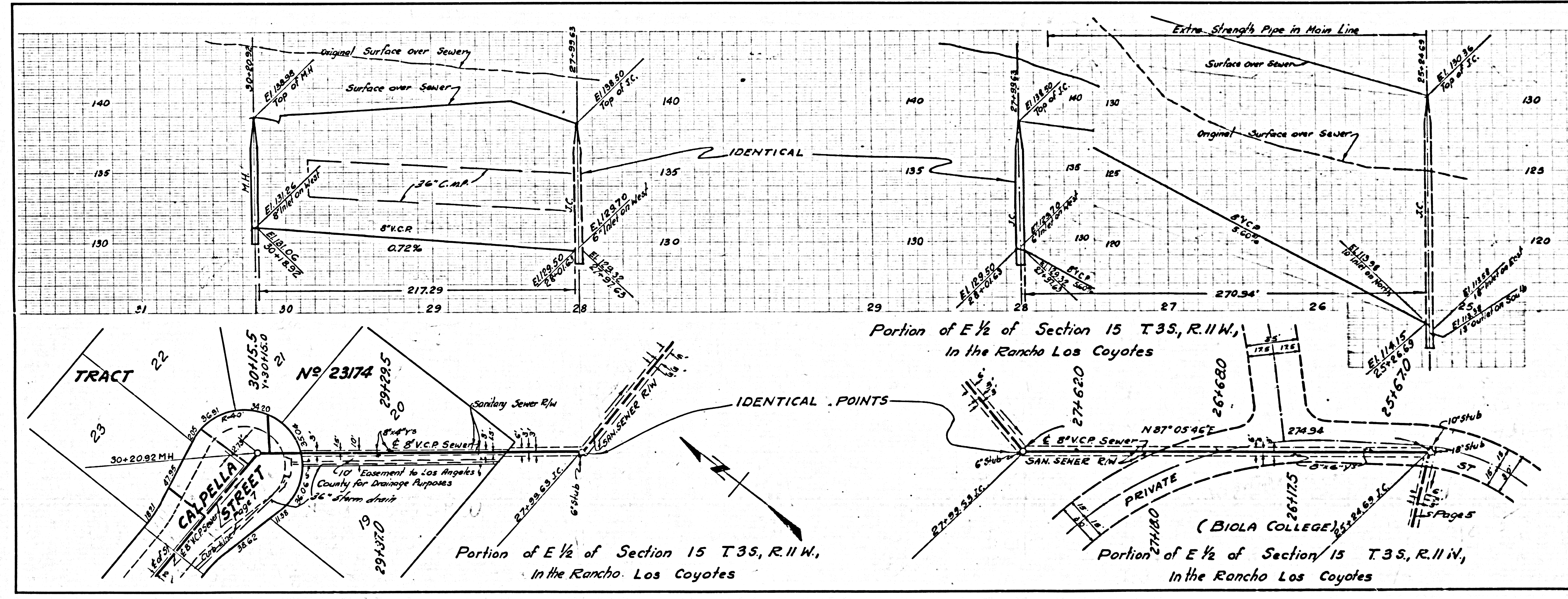
24,877



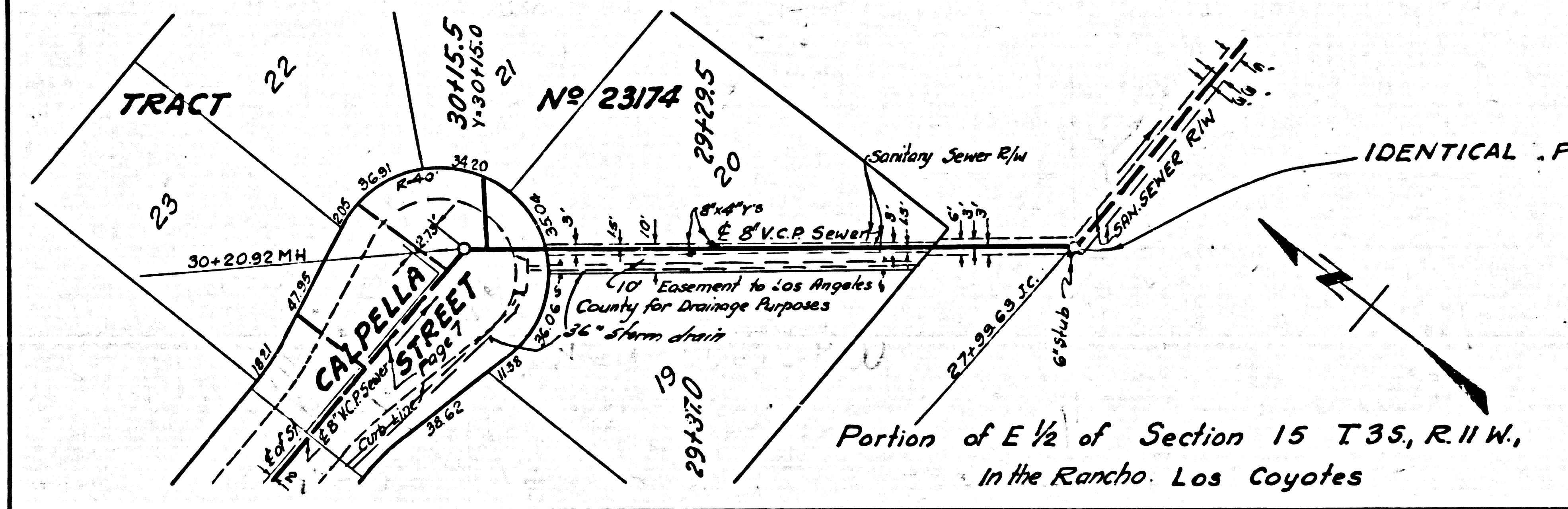
RL 2-22-57

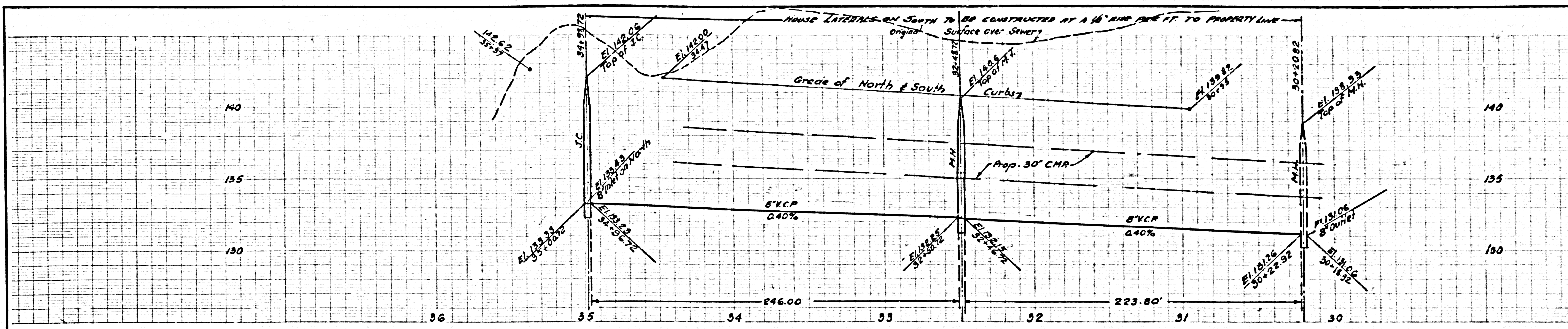
NO CHARGE FOR CONNECTIONS

24,878



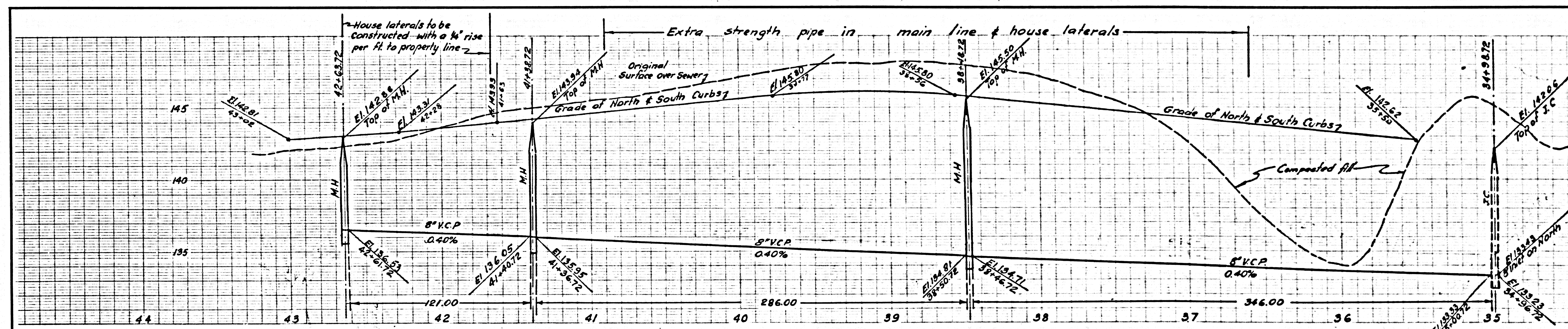
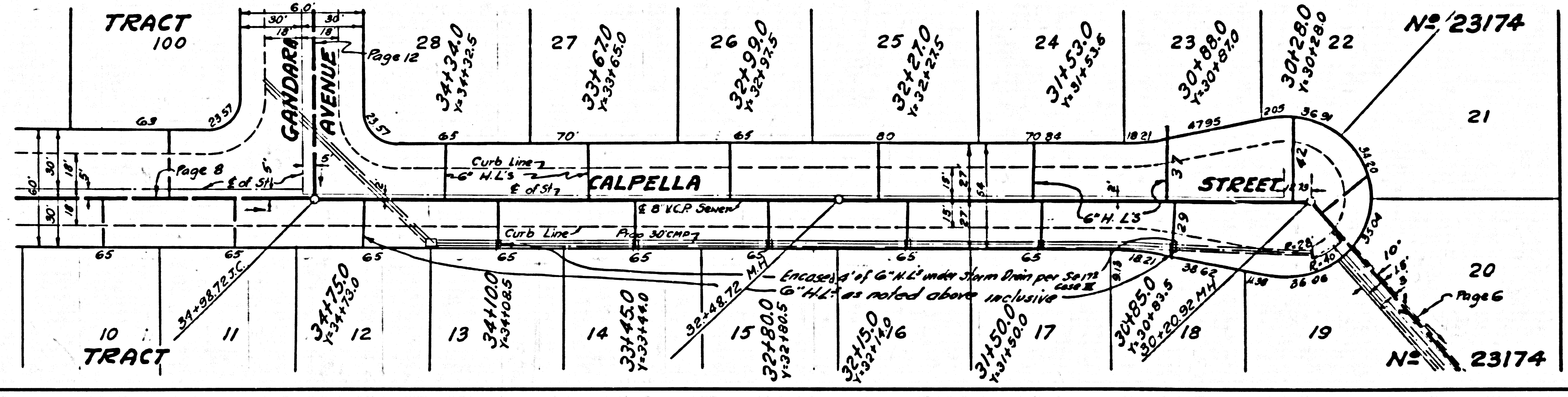
RL 2-22-57





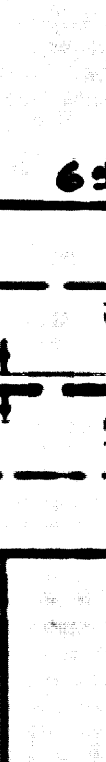
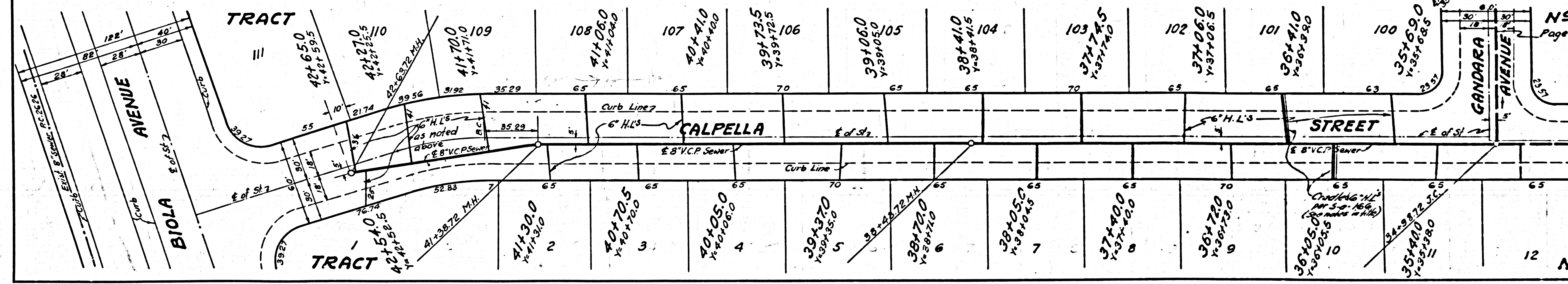
NO CHARGE FOR CONNECTIONS

24,879

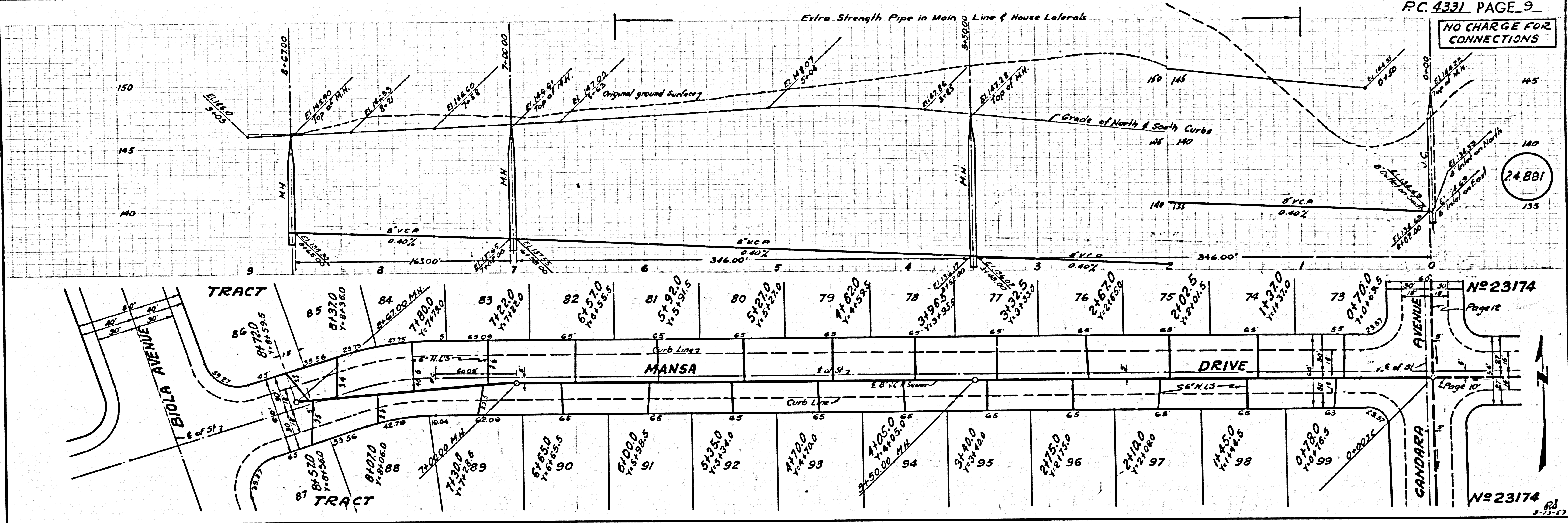


NO CHARGE FOR CONNECTIONS

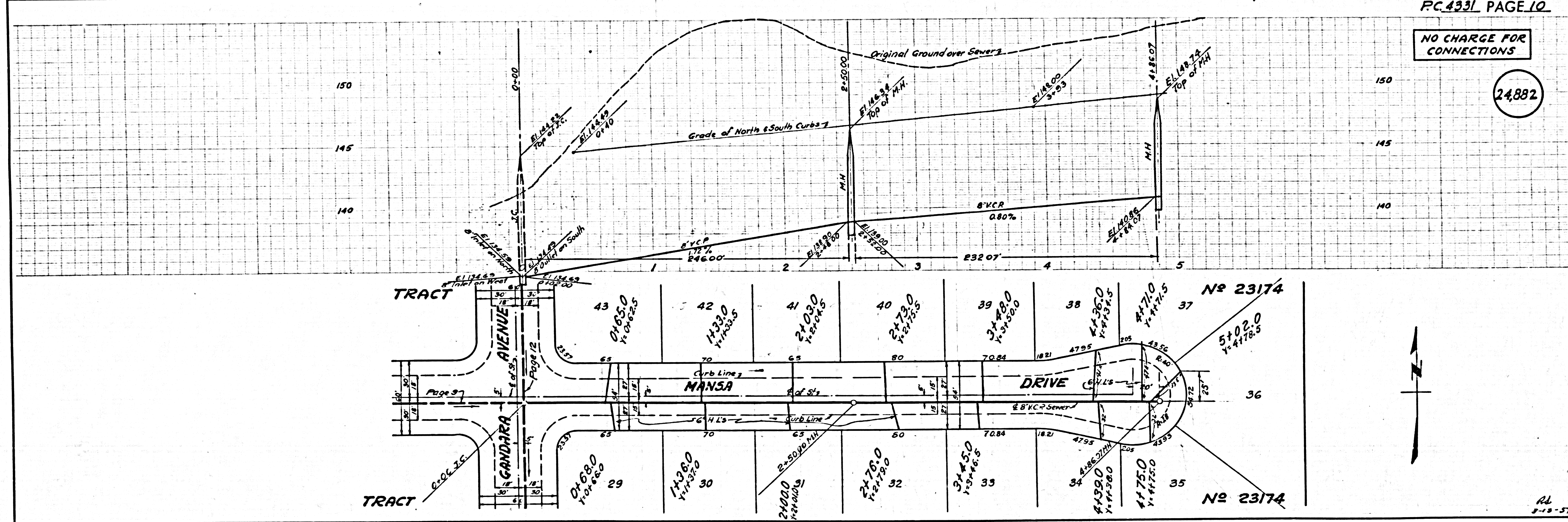
24,880



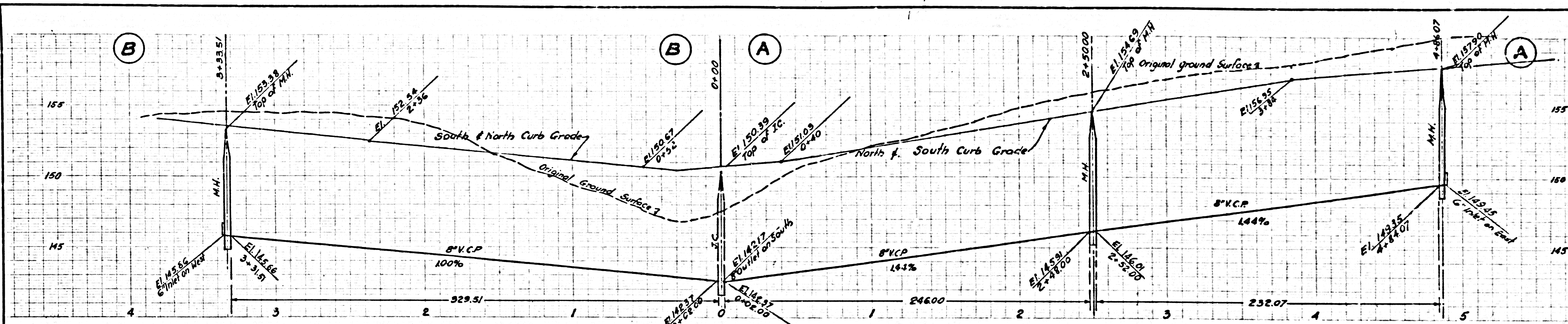
NO CHARGE FOR CONNECTIONS



NO CHARGE FOR CONNECTIONS

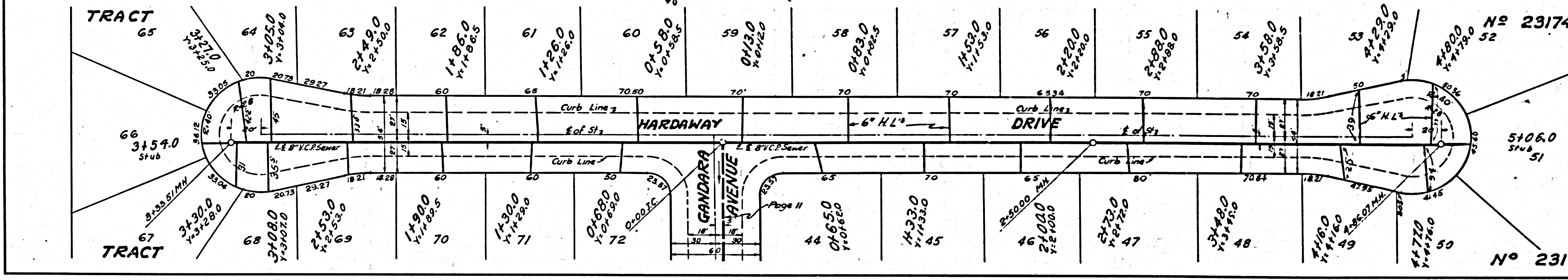


U.S.G. 100-000 GAL. BLUE PRINT SHIRT NO. 1

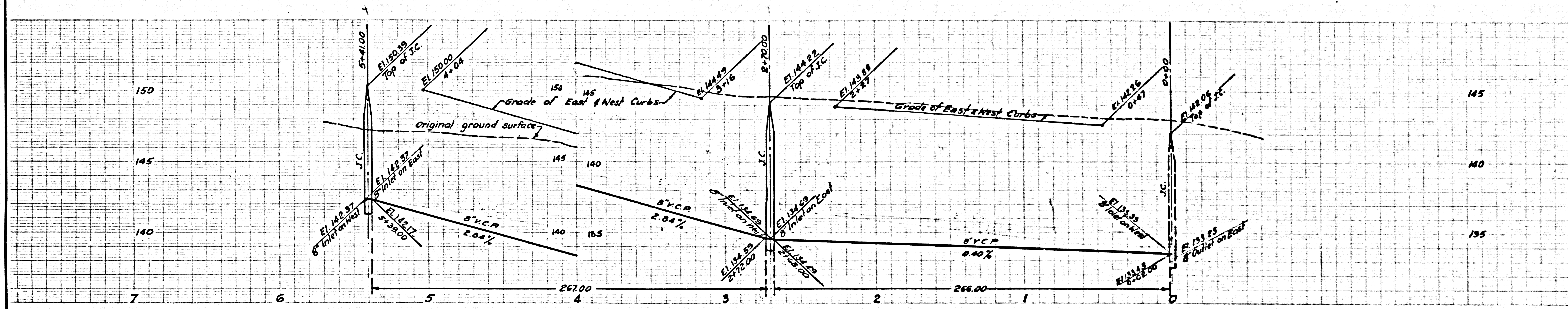


NO CHARGE FOR CONNECTIONS

24883

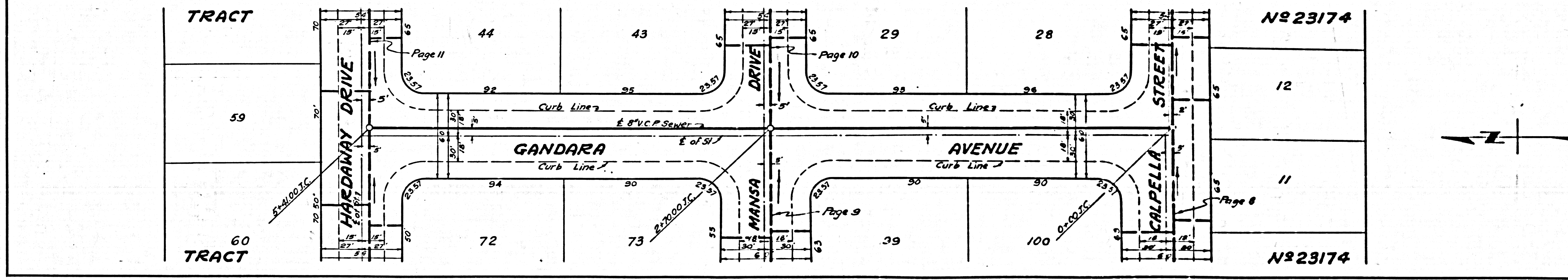


RI 2-12-57



NO CHARGE FOR CONNECTIONS

24884



RI 2-12-57