

WHITTIER BLDG. DIST. NO. 11

PROFILE ALIGNMENT AND GRADE OF P.C. 4332
SANITARY SEWERS PAGE 1

TO BE CONSTRUCTED IN 25,459

TRACT NO 23661
PRIVATE CONTRACT NO. 4332

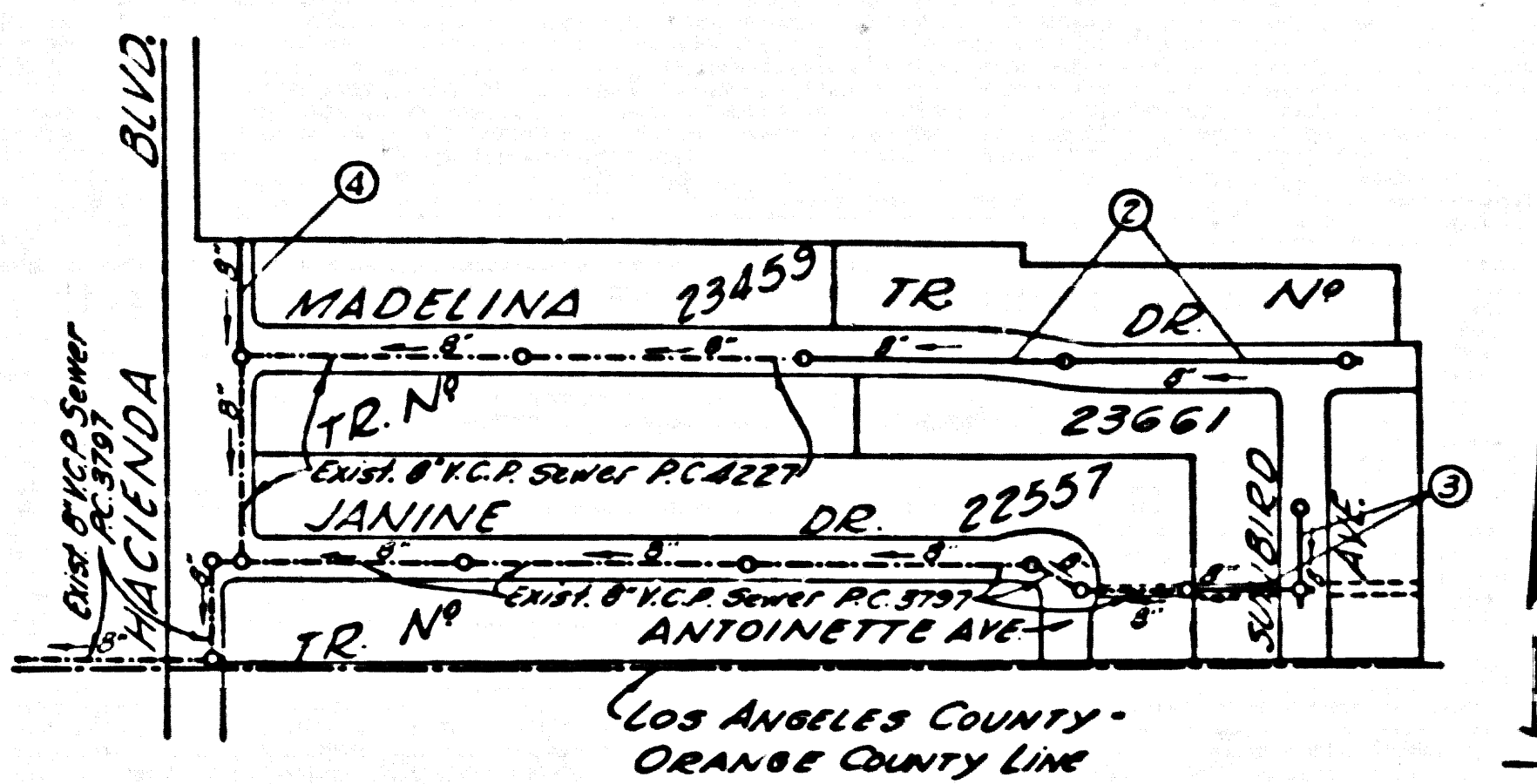
W.S. 38
2 SHEETS, 4 PAGES

SCALE: VERT. 1" = 4'
HORIZ. 1" = 40' FEB., 1957

PREPARED IN THE OFFICES OF
KEMMERER ENGINEERING CO., INC.

BY: *Wm. C. Kemmerer*
REG. C. E. NO. 8122

FOR LEGEND SEE PLAN NO. S-A-64



INDEX MAP
TR. NO 23661
P.C. 4332 Scale: 1"=300'

B.M. C.S. 38-2 Hacienda Blvd & L.A. & Orange Co. Line E Inter-A Standard Precast Man 15" Below the surface and protected by cast iron cover lettered "County Surveyors Monument" Elev. 425.003

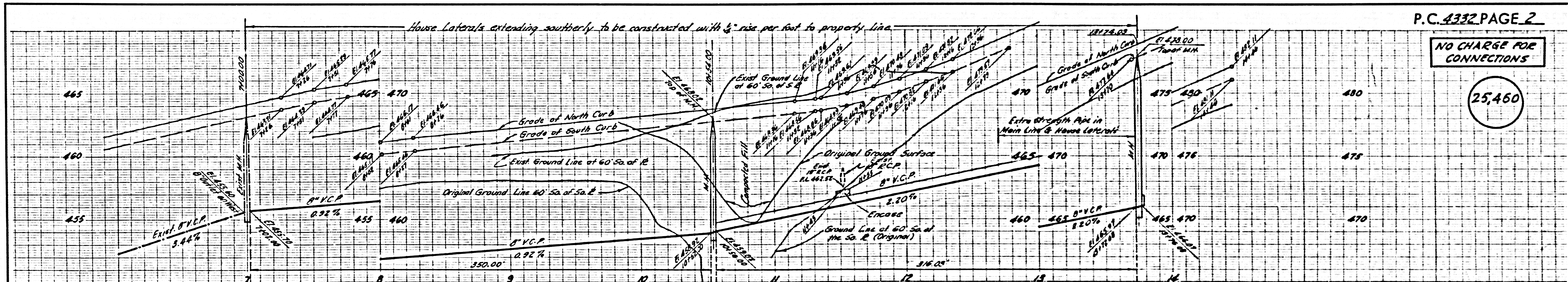
NO CHARGE FOR CONNECTIONS
L. L. Litchner 4-30-57

NOTE:
THE CONTRACTOR SHALL NOTIFY THE CONSTRUCTION AND STORM DRAIN DIVISION BY TELEPHONE MAIN 9-4747 EXT. 562 AT LEAST 24 HOURS BEFORE STARTING ANY WORK UNDER THIS CONTRACT.

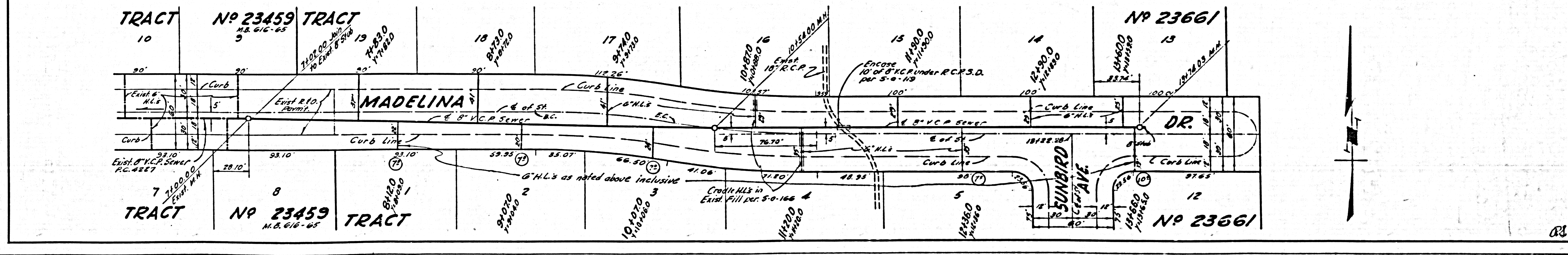
NOTE:
GRADES TO WHICH THIS IMPROVEMENT IS TO BE CONSTRUCTED ARE SHOWN ON PLANS AND PROFILE. GRADE POINTS FOR TOP OF CURB, CENTER LINE OF STREETS, OR CENTER LINE OF ALLEYS ARE SHOWN BY CIRCLES ON PROFILES. AT ALL POINTS BETWEEN MEASUREMENT POINTS THE GRADE SHALL BE ESTABLISHED SO AS TO COMPOSE TO A SMOOTH LINE BEYOND BETWEEN SAID MEASUREMENT POINTS.
ELEVATIONS ARE IN FEET ABOVE U.S.C. & G.S. SEA LEVEL DATUM OF 1929.
THIS DRAWING AND THE DATA HEREON ARE HEREBY MADE A PART OF THE SPECIFICATIONS.
WORK SHALL BE CONSTRUCTED ACCORDING TO SPECIFICATIONS ON FILE IN THE OFFICE OF THE COUNTY ENGINEER AND SHALL BE PROSECUTED ONLY IN THE PRESENCE OF THE COUNTY ENGINEER.
BEFORE WORK CAN BE STARTED, THE CONTRACTOR MUST OBTAIN A PERMIT TO EXCAVATE IN COUNTY STREETS FROM THE L.A. COUNTY ROAD DEPT., 126 W. 2ND ST., AND MAKE A DEPOSIT WITH THE COUNTY ENGINEER, ROOM 234 PAN AMERICAN BUILDING, 233 SO. BROADWAY IMPROVEMENT TO COVER THE COST OF CONSTRUCTION INSPECTION AND RECORD PLANS.
APPROVAL OF THIS PLAN BY THE COUNTY OF LOS ANGELES DOES NOT CONSTITUTE A REPRESENTATION AS TO THE ACCURACY OF THE LOCATION OR OF THE EXISTENCE OR NON-EXISTENCE OF ANY UNDERGROUND UTILITY PIPE, OR STRUCTURE WITHIN THE LIMITS OF THIS PROJECT. THIS NOTICE APPLIES TO ALL PAGES.
IF WORK IS TO BE DONE IN A STATE HIGHWAY, A PERMIT MUST BE OBTAINED FROM THE STATE OF CALIFORNIA, DIVISION OF HIGHWAYS, 128 SOUTH SPRING STREET.

COUNTY OF LOS ANGELES, CALIFORNIA

APPROVED, JOHN A. LAMBE, COUNTY ENGINEER
APPROVED, A. M. BAWEL, CHIEF ENGINEER
BY: *J. L. Hughes* (Sanitation Engineer)
BY: *J. B. Williams* (Office Engineer)
CHECKED BY: *S. K. Under* 6-12-57
OFFICE OF COUNTY ENGINEER, REG. C. E. NO. 3466

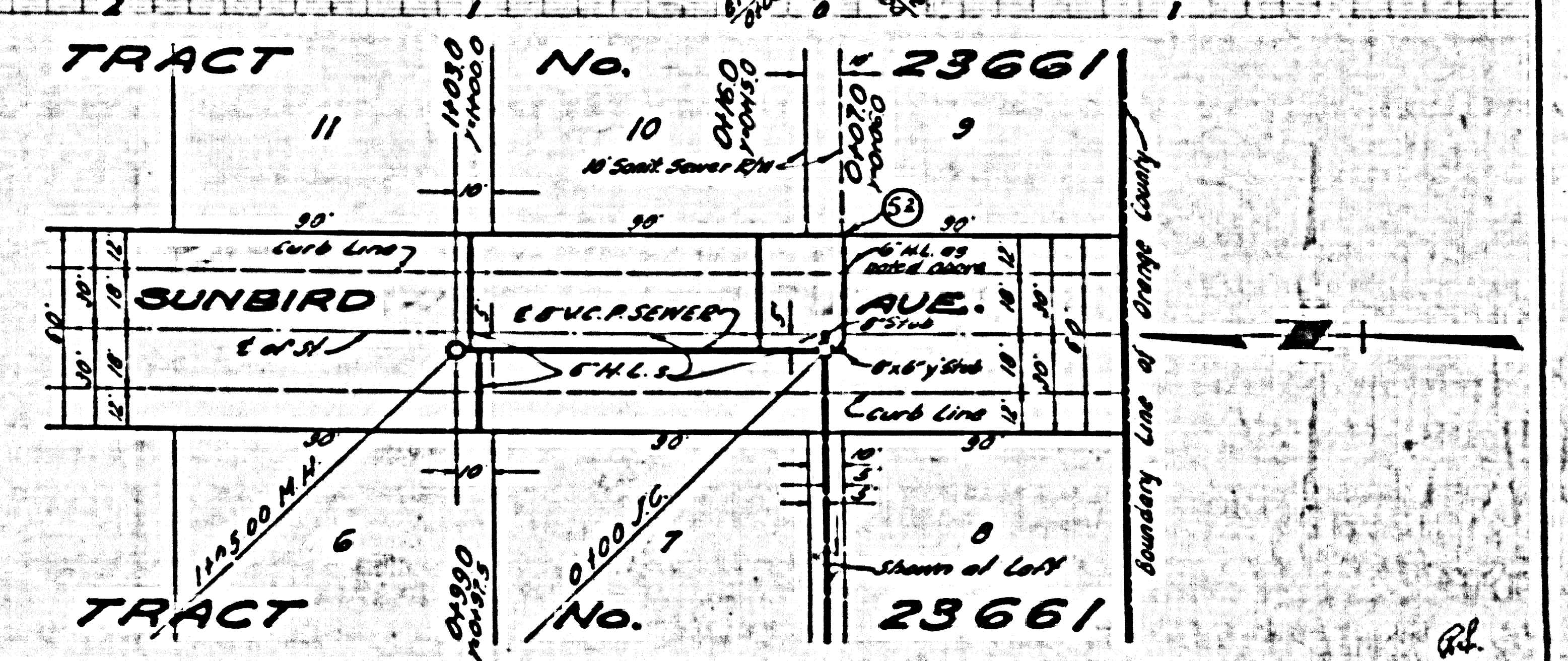
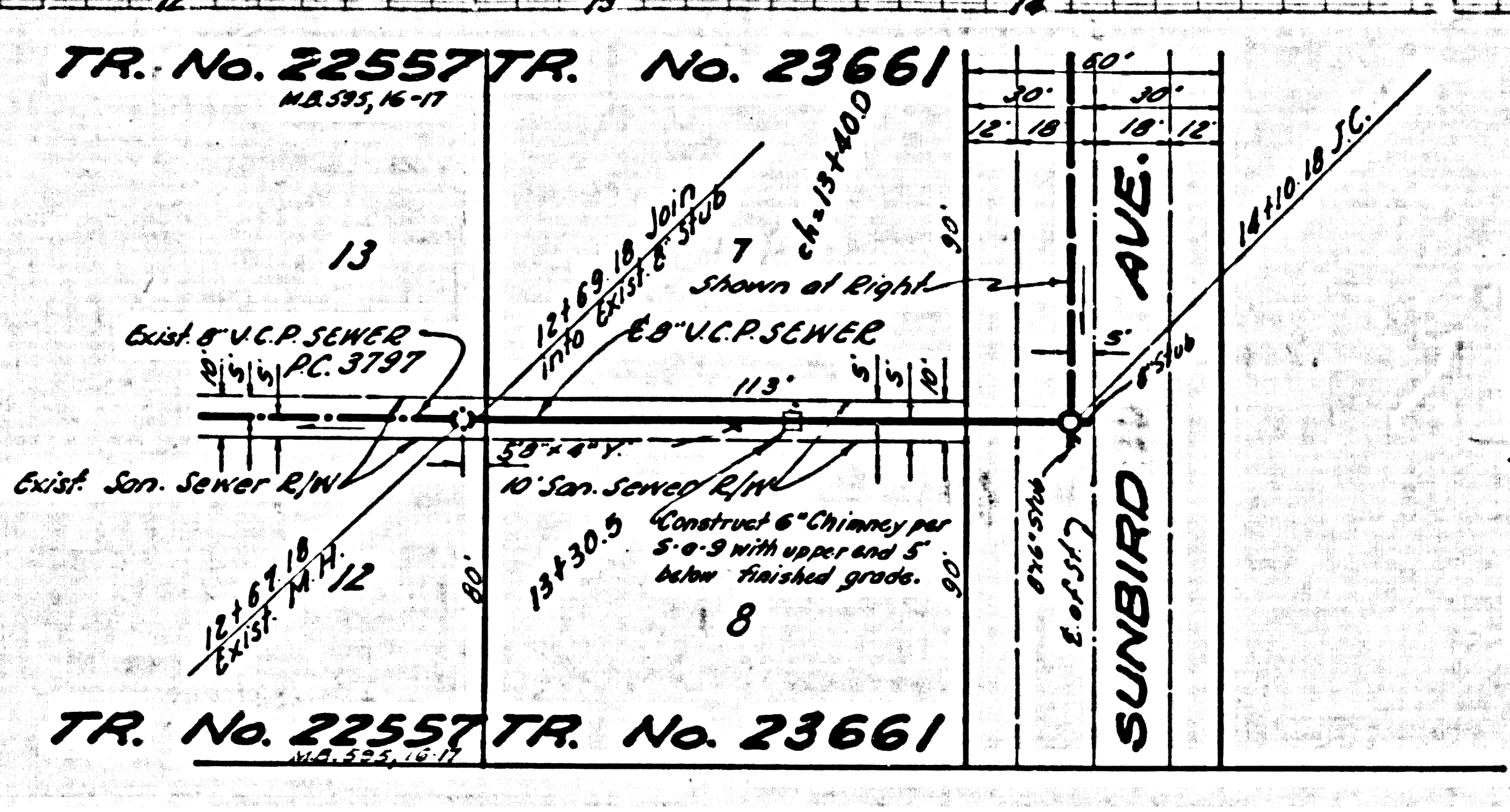
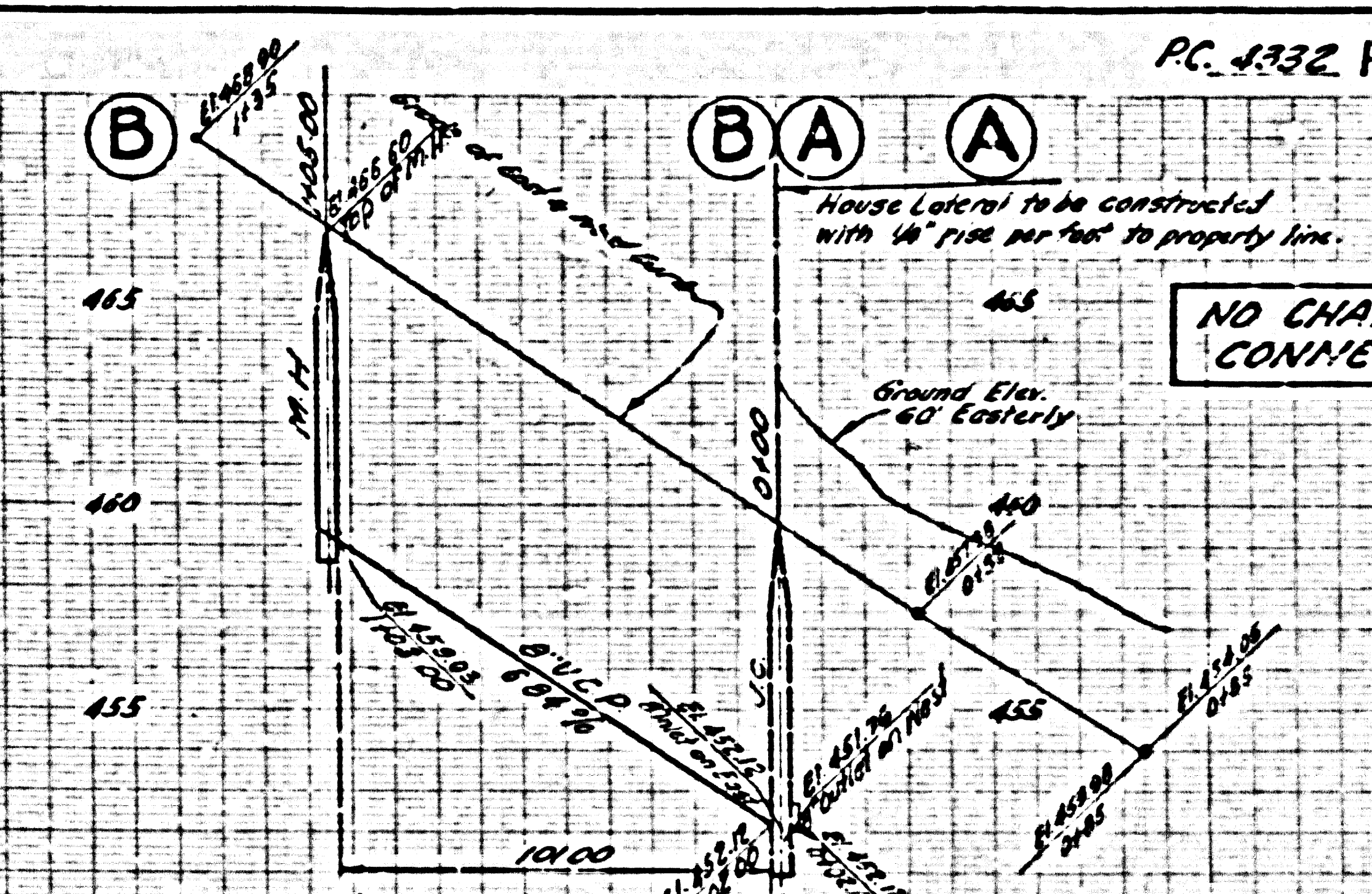
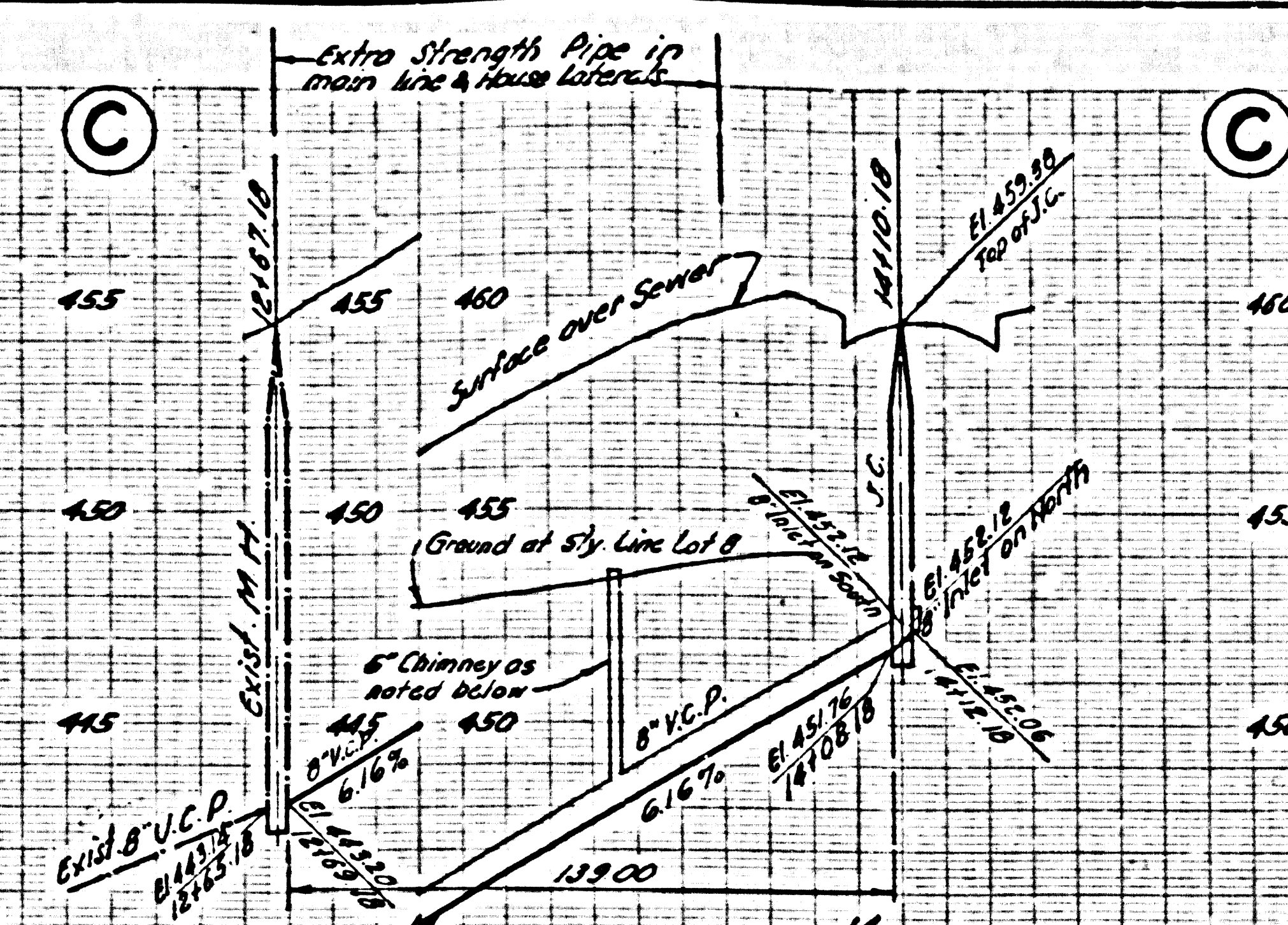


NO CHARGE FOR CONNECTIONS
25,460



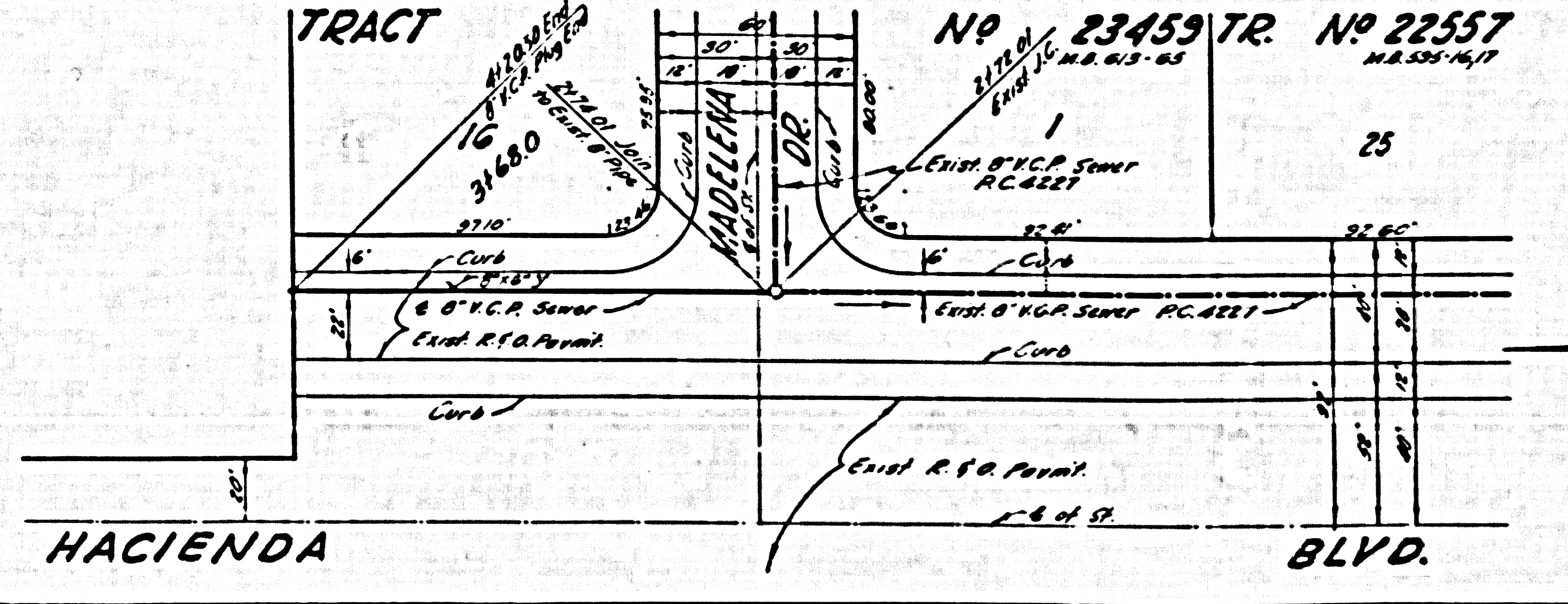
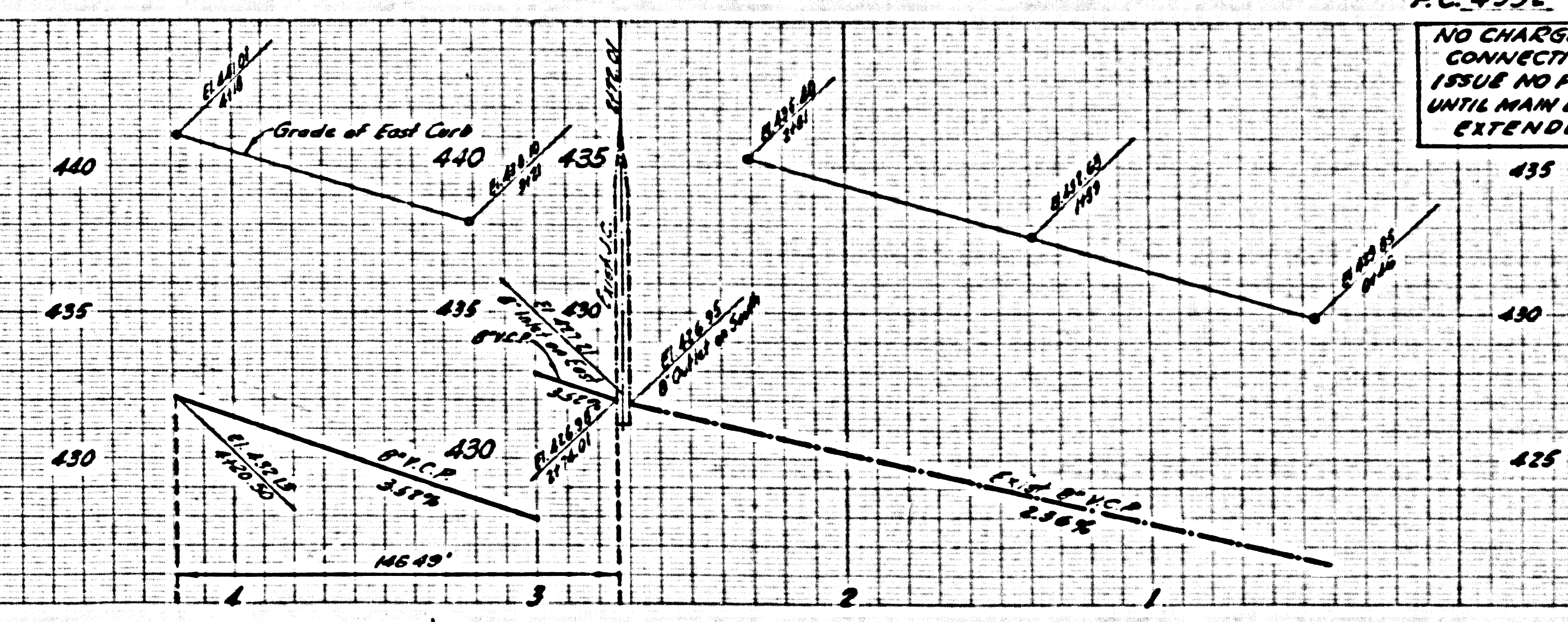
25,461

NO CHARGE FOR CONNECTIONS



25,462

NO CHARGE FOR CONNECTIONS ISSUE NO PERMITS UNTIL MAIN LINE IS EXTENDED



PC. 4332