

PUEBLO Bldg. Dist. No. 2

NOTE

Provide stakes on the property lines or property lines produced at right angles to the sewer line at the center line of each manhole.

No representative of the City Engineer will survey or layout any portion of the work.

The owner or his authorized representative shall furnish the City Engineer with grade sheets and stations for all house laterals and Y branches and shall provide stakes for these at their proper locations with stationing plainly marked. Any change in location shall be requested in writing by the owner or his representative.

No revisions shall be made in these plans without the approval of the City Engineer.

1. Use standard manhole frames and covers, S-a-117.
2. Use standard strength pipe except as noted.
3. Use cement mortar for all vitrified clay pipe joints.
4. Resurface all trench within paved areas to meet L.A. County Bond Dept. or Calif. State Highway Dept. requirements in accordance with permit.
5. Encase four feet of sewer at points of interference with poles, S-a-119.
6. House laterals to be constructed with inverts at property line 2 feet below curb grade except as noted.
7. All structures shall be brick sewer structures, S-a-104.
8. For allowable leakage test, use Formula No. 2 Spec's, Sec. 31.
9. The private engineer is to furnish the House Lateral depth of the Liberty line below the top of curb elevation for each House Lateral on the grade sheet.

PROFILE, ALIGNMENT AND GRADE OF **P.C. 4344**
SANITARY SEWERS **PAGE 1**
TO BE CONSTRUCTED IN
AMAR ROAD **(2450)**
EAST OF BLENDOORA AVE.
PRIVATE CONTRACT NO. 4344
W. S. 38
JANUARY, 1957

NOTE

Contractor shall verify location of all underground utilities before starting construction.

DRAWN BY: **W. S. 38**
 CHECKED BY: **W. S. 38**
 PREPARED BY THE OFFICE OF
KRAMER ENGINEERING CO., INC.
 1000 S. GARDEN ST.
 LOS ANGELES, CALIF. 90007
 FOR LEGEND SEE PLAN NO. S-a-64

NOTE

Grades to which this improvement is to be constructed are shown on plans and profiles. Grade points for top of curb, center line of streets, or center line of alleys are shown by crosses on profiles. At all points between designated points the grade shall be established so as to conform to a straight line drawn between said designated points.

Elevations are in feet above U.S.C. & G.S. Sea level datum of 1929.

This drawing and the data hereon are hereby made a part of the specifications.

Work shall be constructed according to specifications on file in the office of the City Engineer and shall be prosecuted only in the presence of the City Engineer.

Before work can be started, the contractor must obtain a permit to excavate in City streets from the L.A. County Bond Dept., 108 W. 2nd St., and make a deposit with the City Engineer, Rm. 324, 253 S. Broadway, sufficient to cover the cost of construction inspection and record plans.

Approval of this plan by the City of La Puente does not constitute a representation as to the accuracy of the location of or the existence or non-existence of any underground utility, pipe, or structure within the limits of this project. This note applies to all streets.

If work is to be done in a State Highway, a permit must be obtained from the State of California, Division of Highways, 120 South Spring Street.

CITY OF LA PUENTE, CALIFORNIA
 Approved, **John A. Lambie**, City Engineer
 Approved, **A. M. Brown**
 Checked by: **W. S. 38**
 Office of City Engineer, P.O. Box 3411
 Approved by: **W. S. 38**
 Office of City Engineer, P.O. Box 3411

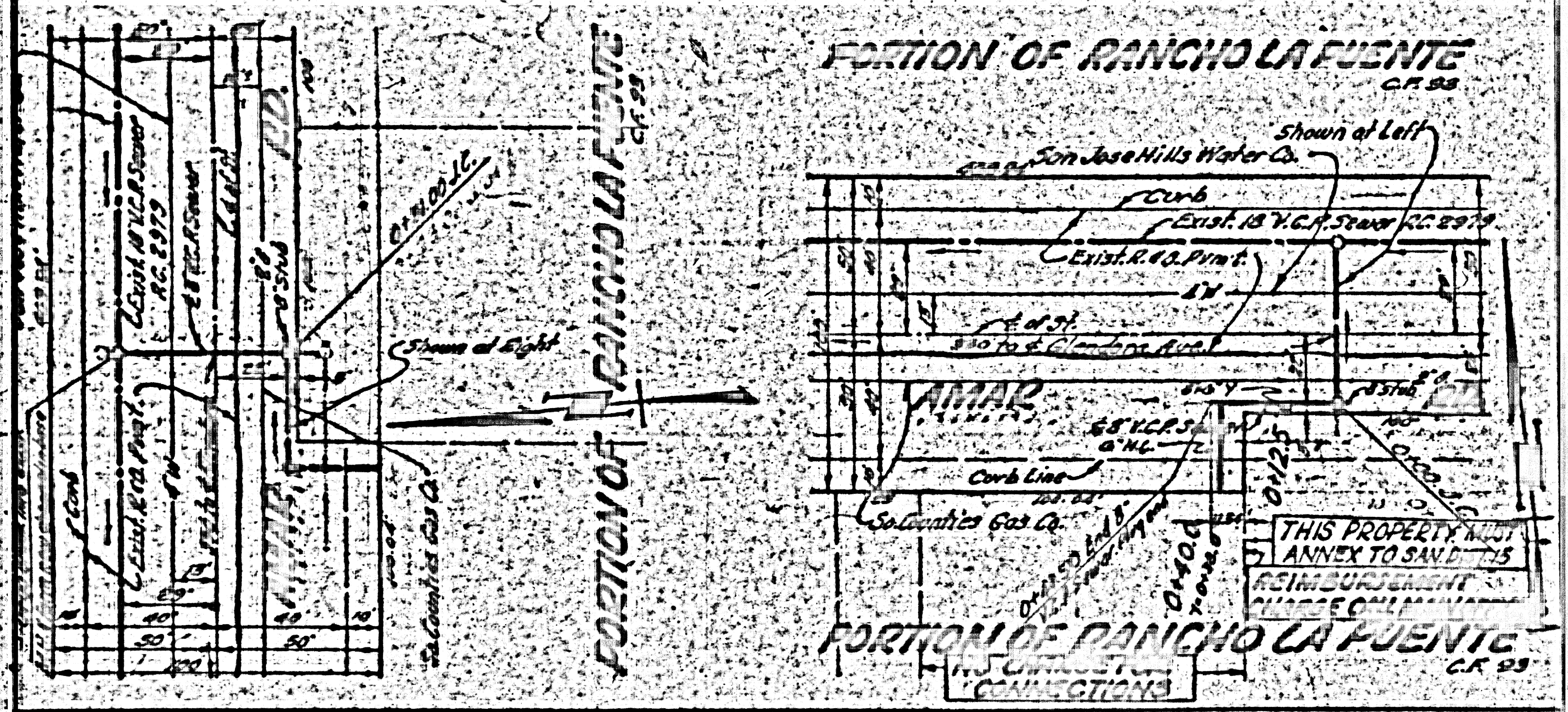
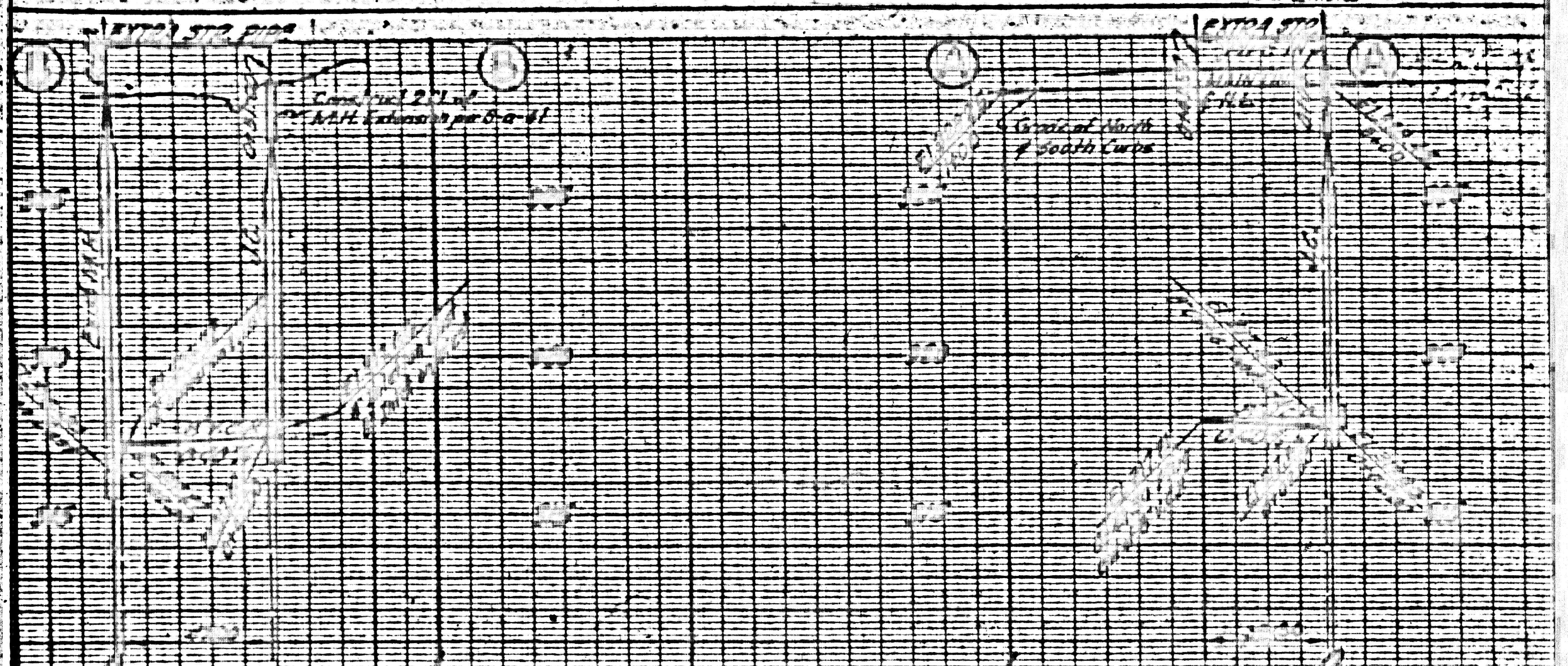
INDEX MAP
 Scale: 1" = 600'
 P.C. 4344

CREATED CHANGES
AS INDICATED
By Creation 1-5-57

Approved by **CITY OF LA PUENTE**
W. S. 38 1-5-57
 City Engineer

WPA 1000
KETTLE & EZZER CO

ON ORDER, JAMES W. WEAVER
LITTLE V. 4 X 50
BY W. W. WEAVER
REVISED



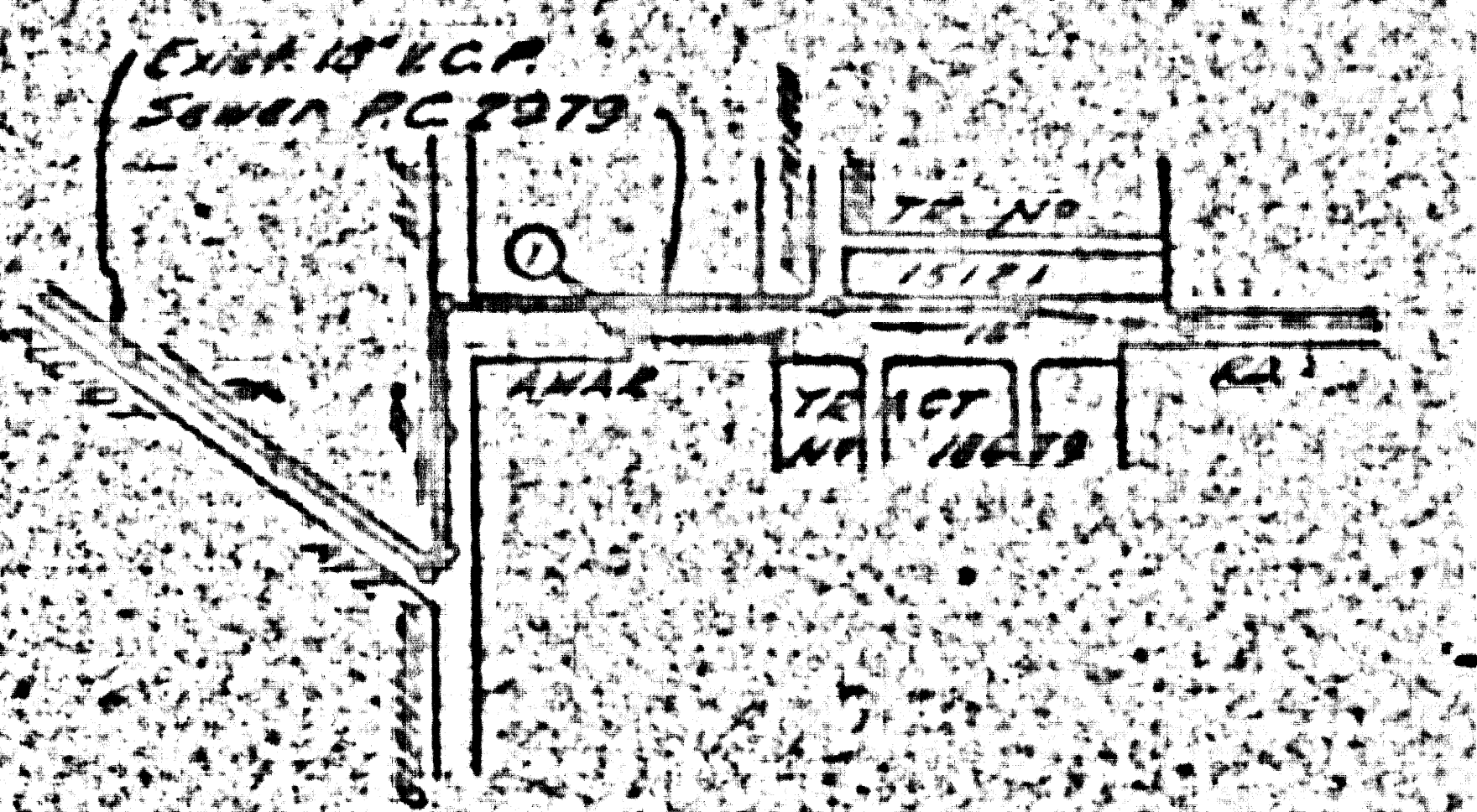
Trim Line
PUENTE Bldg. Dist. No. 2

- NOTE:
- Provide stakes on the property lines or property lines produced at right angles to the sewer line at the center line of each manhole.
 - No representative of the City Engineer will survey or layout any portion of the work.
 - The owner or his authorized representative shall furnish the City Engineer with grade sheets and stations for all house laterals and Y branches and shall provide stakes for them at their proper locations with stationing plainly marked. Any change in location shall be requested in writing by the owner or his representative.
 - No revisions shall be made in these plans without the approval of the City Engineer.
 - 1. Use standard manhole frames and covers, S-a-117.
 - 2. Use standard strength pipe except as noted.
 - 3. Use cement mortar for all vitrified clay pipe joints.
 - 4. Surfacing all trench within paved area to meet L.A. County Road Dept. or Calif. State Highway Dept. requirements in accordance with permit.
 - 5. Encase feet of sewer at points of interference with poles, S-a-119.
 - 6. House laterals to be constructed with inverts at property line E feet below curb grade except as noted.
 - 7. All structures shall be brick sewer structures, S-a-104.
 - 8. For allowable leakage test, use Formula No. \dots , Spec. \dots , p. 51.
 - 9. The private engineer is to furnish the House Lateral depth at the party line below the top of curb elevation for each House Lateral on the grade sheet.

PROFILE, ALIGNMENT
SANITARY
TO BE CONSTRUCTED
AMAR
EAST OF G...
PRIVATE CON...
W...

NOTE:
Contractor shall verify location
of all underground utilities
before starting construction.

Scale: VERT. 1" = 4'
HORIZ. 1" = 40'
PREPARED BY THE
K... ENGINEER
...
FOR LEGEND SEE ...



INDEX MAP
Scale: 1" = 600'
PC 4344

BAR 2, C. 1107 Let in No. Curb
Elev. 152.15 at curb rel. at
N.W. Cor. Caldwell St. (Elev. 152.15)
ELEV. 152.15

COLLECTOR LINES
AS INDICATED
La Puente 7-2-57

Approved by City of La Puente
By: *[Signature]* 3-27-57
CITY MANAGER

NOTE:
Grades to which this improvement is to be made shall be shown on profiles. At all points between design points a straight line drawn between design points shall be used. Elevations are in feet above U.S.C. & G.S. This drawing and the data hereon are hereby approved by the City Engineer and shall be prosecuted only in the City of La Puente. Before work can be started, the contractor shall file with the City Engineer, Rm. 324, 223 S. Broadway, a copy of the plans for inspection and record.

Approval of this plan by the City of La Puente is subject to the accuracy of the location of or the existence of any utility, pipe, or structure within the limits of this project. If work is to be done in a State Highway, California, Division of Highways, 120 South 5th Street, Sacramento, California.
CITY OF LA PUENTE
Approved, John A. Lambie, City Engineer
[Signature]
Checked by: *[Signature]*
Office of County Engineer, Inc.
APPROVED BY
INDUSTRIAL ENGINEER
BY: *[Signature]*