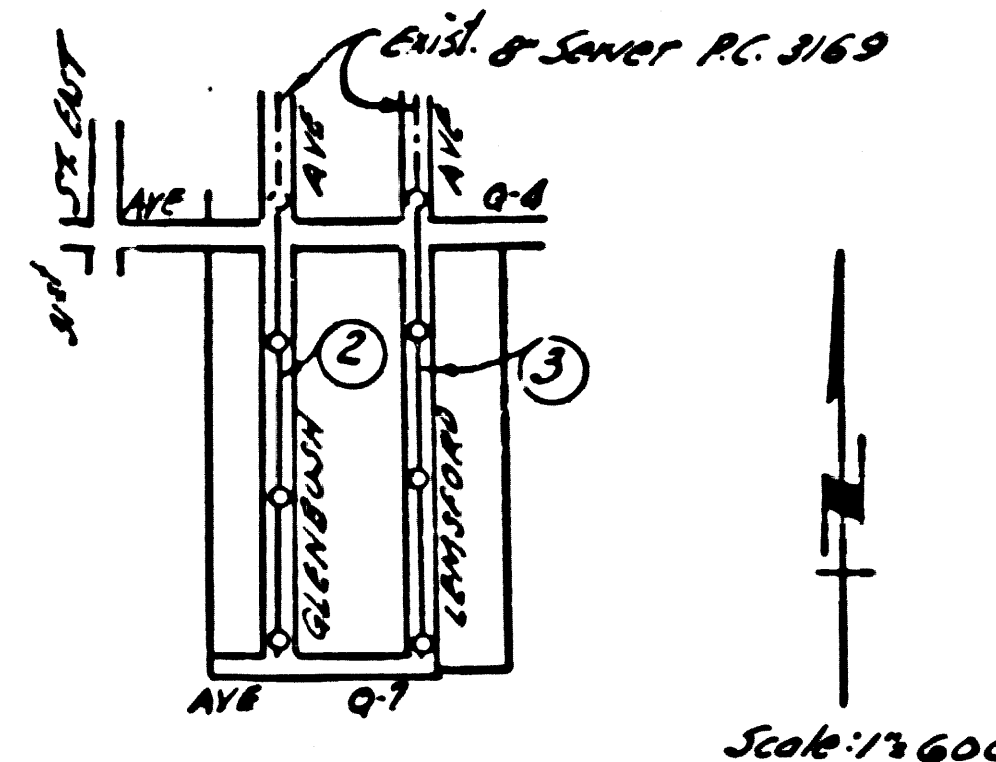


PALMDALE BLDG. DIST. NO. 8.1

PROFILE ALIGNMENT AND GRADE OF P.C. 4358
 SANITARY SEWERS PAGE 1
 TO BE CONSTRUCTED IN
 TRACT N^o 18760 25,144

B.M. U.S. 2168 El. 2598.161 18 mi. E. along State Hwy 138 from S.P.R.R. Sta. of Palmdale at dirt rd. crossing, 36' W. of the E. of the rd. 31' N. of the E. of the Hwy. 8' 18" W. of curbline 14913.5 A U.S.G.S. 3rd. Ed. stamped L.S. 26-1929 & set in top of conc. post, 1946 U.S.C.F.S. Elev 2598.919
 Elevations on this plan are based on Elev 2598.161, 1929. Subtract 0.24 from elevs shown hereon to be on 1946 U.S.C.F.S. datum.

- NOTES
- PROVIDE STAKES ON THE PROPERTY LINE OR PROPERTY LINES PRODUCED AT 90° ANGLES TO THE SEWER LINE AT THE CENTER LINE OF EACH MANHOLE.
 - NO REPRESENTATIVE OF THE COUNTY ENGINEER WILL SURVEY OR LAYOUT ANY PORTION OF THE WORK.
 - THE OWNER OR HIS AUTHORIZED REPRESENTATIVE SHALL FURNISH THE COUNTY ENGINEER WITH GRADE SHEETS AND STATIONING PLANS FOR ALL HOUSE LATERALS AND Y BRANCHES AND SHALL PROVIDE STAKES FOR THEM AT THEIR PROPER LOCATIONS WITH STATIONING PLANS. ANY CHANGE IN LOCATION SHALL BE REQUESTED BY WRITING BY THE OWNER OR HIS REPRESENTATIVE.
 - NO REVISIONS SHALL BE MADE IN THESE PLANS WITHOUT THE APPROVAL OF THE COUNTY ENGINEER.
 - USE STANDARD MANHOLE FRAMES AND COVERS, S.A. 117, EXCEPT AS NOTED.
 - USE STANDARD STRENGTH PIPE EXCEPT AS NOTED.
 - USE CEMENT MORTAR FOR ALL VITRIFIED CLAY PIPE JOINTS.
 - RESURFACE ALL TRENCH WITHIN PAVED AREA TO MEET L. A. COUNTY ROAD DEPT. OR CALIF. STATE HIGHWAY DEPT. REQUIREMENTS IN ACCORDANCE WITH PERMITS.
 - INDICATE FOUR FEET OF SEWER AT POINTS OF INTERFERENCE WITH POLES, S.A. 119.
 - HOUSE LATERALS TO BE CONSTRUCTED WITH INVERTS AT PROPERTY LINE 6" BELOW CURB GRADE EXCEPT AS NOTED.
 - ALL STRUCTURES SHALL BE BUILT IN ACCORDANCE WITH THE SPECIFICATIONS, S.A. 116, EXCEPT AS NOTED.
 - FOR ALLOWABLE LEAKAGE TEST USE FORMULA IN S.A. 116, EXCEPT AS NOTED.
 - MANHOLE TOPS IN UNIMPROVED RIGHTS-OF-WAY TO BE 4" ABOVE FINISHED GRADE.
 - THE INDICATION OR OMISSION OF EXISTING SUBSTRUCTURES SHALL IN NO WAY BELIEVE THE CONTRACTOR FROM THE RESPONSIBILITY OF VERIFYING AND LOCATING SUBSTRUCTURES.
 - THE PRIVATE ENGINEER IS TO FURNISH THE HOUSE LATERAL DEPTH AT THE PROPERTY LINE BELOW THE TOP OF CURB ELEVATION FOR EACH HOUSE LATERAL, ON THE GRADE SHEET.
 - Set all pipe joints with 4" cement marker that are within 20' of all property lines.



INDEX MAP
 TRACT N^o 18760
 P.C. 4358

NO CHARGE FOR CONNECTIONS
 7/27/57

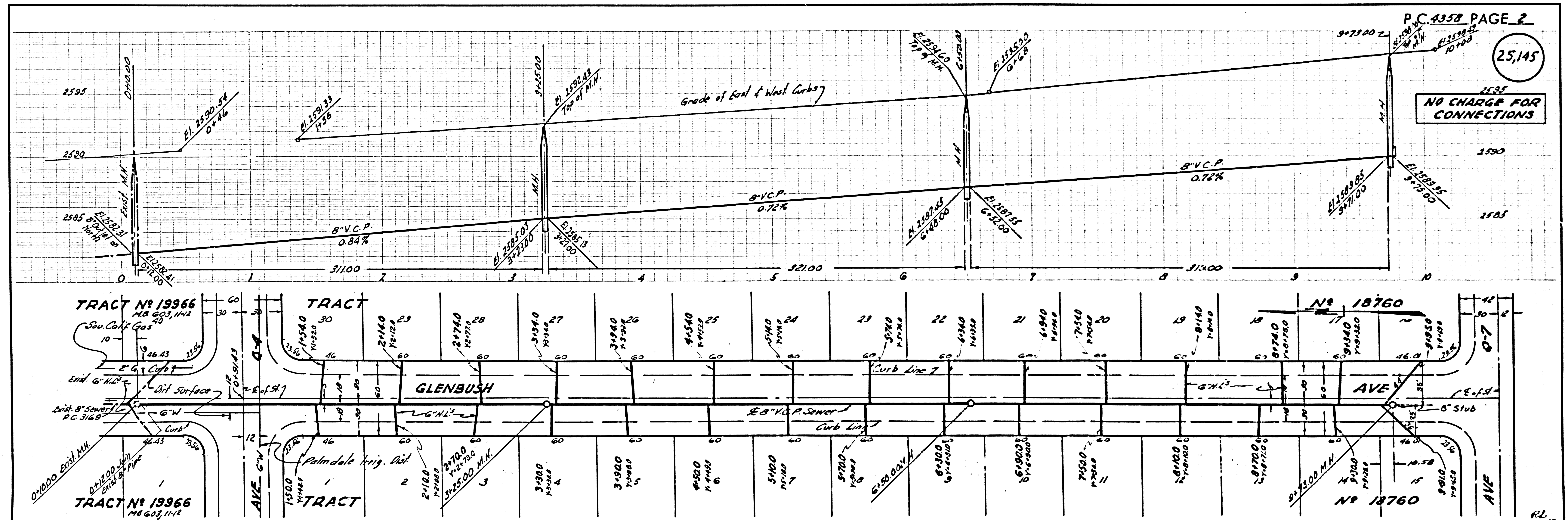
PRIVATE CONTRACT NO. 4358

W.S. 65
 TWO SHEETS, THREE PAGES
 SCALE: VERT. 1" = 4' HORIZ. 1" = 40'
 MARCH, 1957
 PREPARED IN THE OFFICES OF
R.L. STUCKEY CO., INC.
 REG. C. E. NO. 10-6007

NOTE: GRADES TO WHICH THIS IMPROVEMENT IS TO BE CONSTRUCTED ARE SHOWN ON PLANS AND PROFILES. GRADE POINTS FOR TOP OF CURB, CENTER LINE OF STREETS, OR CENTER LINE OF ALLEYS ARE SHOWN BY CIRCLES ON PROFILES AT ALL POINTS BETWEEN INDICATED POINTS. THE GRADE SHALL BE ESTABLISHED AS TO CORNER TO A STRAIGHT LINE BETWEEN SAID INDICATED POINTS. ELEVATIONS ARE IN FEET ABOVE U.S.C.F.S. SEA LEVEL DATUM OF 1929. THIS DRAWING AND THE DATA HEREON ARE HEREBY MADE A PART OF THE SPECIFICATIONS. WORK SHALL BE CONSTRUCTED ACCORDING TO SPECIFICATIONS ON FILE IN THE OFFICE OF THE COUNTY ENGINEER AND SHALL BE PROSECUTED ONLY IN THE PRESENCE OF THE COUNTY ENGINEER. BEFORE WORK CAN BE STARTED, THE CONTRACTOR MUST OBTAIN A PERMIT TO EXCAVATE IN COUNTY STREETS FROM THE L. A. COUNTY ROAD DEPT., 128 W. 2ND ST. AND MAKE AN EMPLOY WITH THE COUNTY ENGINEER, ROOM 214 PLAN AMERICAN BUILDING, 213 SO. BROADWAY. SUFFICIENT TO COVER THE COST OF CONSTRUCTION INSPECTION AND RECORD PLANS. APPROVAL OF THIS PLAN BY THE COUNTY OF LOS ANGELES DOES NOT CONSTITUTE A REPRESENTATION AS TO THE ACCURACY OF THE LOCATION OR OF THE EXISTENCE OR NON-EXISTENCE OF ANY UNDERGROUND UTILITY PIPE, OR STRUCTURE WITHIN THE LIMITS OF THIS PROJECT. THIS NOTE APPLIES TO ALL PAGES. IF WORK IS TO BE DONE IN A STATE HIGHWAY, A PERMIT MUST BE OBTAINED FROM THE STATE OF CALIFORNIA, DIVISION OF HIGHWAYS, 128 SOUTH SPRING STREET.

COUNTY OF LOS ANGELES, CALIFORNIA
 APPROVED, JOHN A. LAMBE, COUNTY ENGINEER
 APPROVED, A. M. BAWIN, CHIEF ENGINEER
 BY A. P. Collins SANITATION ENGINEER
 BY G. J. Carstensen OFFICE ENGINEER
 CHECKED BY S. K. White 3-20-57
 OFFICE OF COUNTY ENGINEER, REG. C. E. NO. 3456

Revision Approved by:
Chas. H. Johnson 5/9/57
 Reg. C. E. No. 10637



TRACT N^o 18760
 P.C. 4358

