

PALMDALE BLDG. DIST. NO. 81

PROFILE ALIGNMENT AND GRADE OF **P.C. 4365**
SANITARY SEWERS PAGE 1
 TO BE CONSTRUCTED IN
AVE. Q-4, CAROLSIDE AVE & 2ND ST. EAST
TRACT NO. 18150

PRIVATE CONTRACT NO. 4365

W.S. 65
 2 SHEETS, 2 PAGES
 SCALE: VERT. 1"=4' HORIZ. 1"=40'
 MARCH, 1957
 PREPARED IN THE OFFICES OF
R.L. STUCKEY CO., INC.
 REG. C.E. NO. 6067

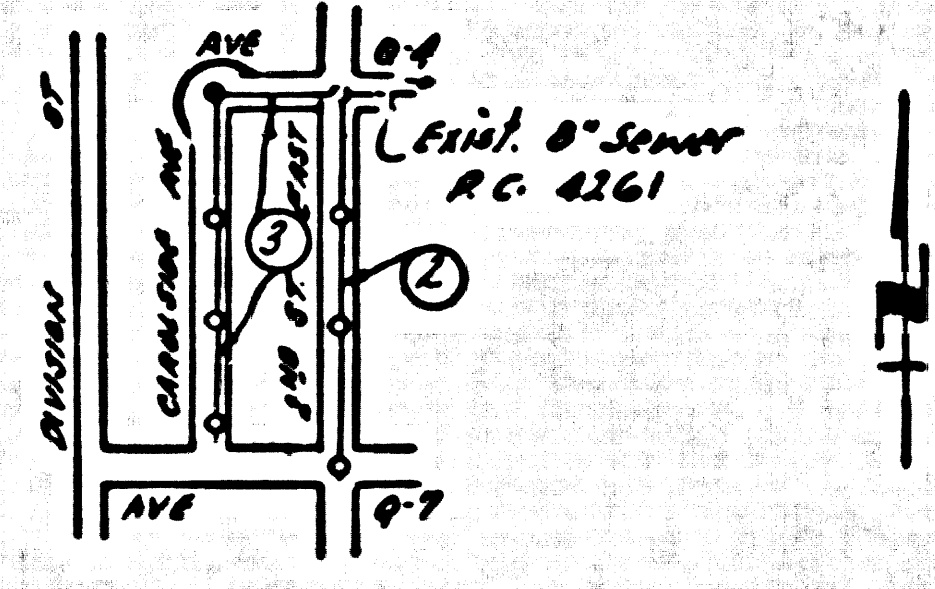
24,601
 B

FOR LEGEND SEE PLAN NO. SA-64

COUNTY OF LOS ANGELES, CALIFORNIA
 APPROVED, JOHN A. LAMBE, COUNTY ENGINEER
 APPROVED, A. M. BAWN, CHIEF ENGINEER
 BY *[Signature]* OFFICE ENGINEER
 CHECKED BY *[Signature]*
 OFFICE OF COUNTY ENGINEER, 800 C. E. NO. 9466

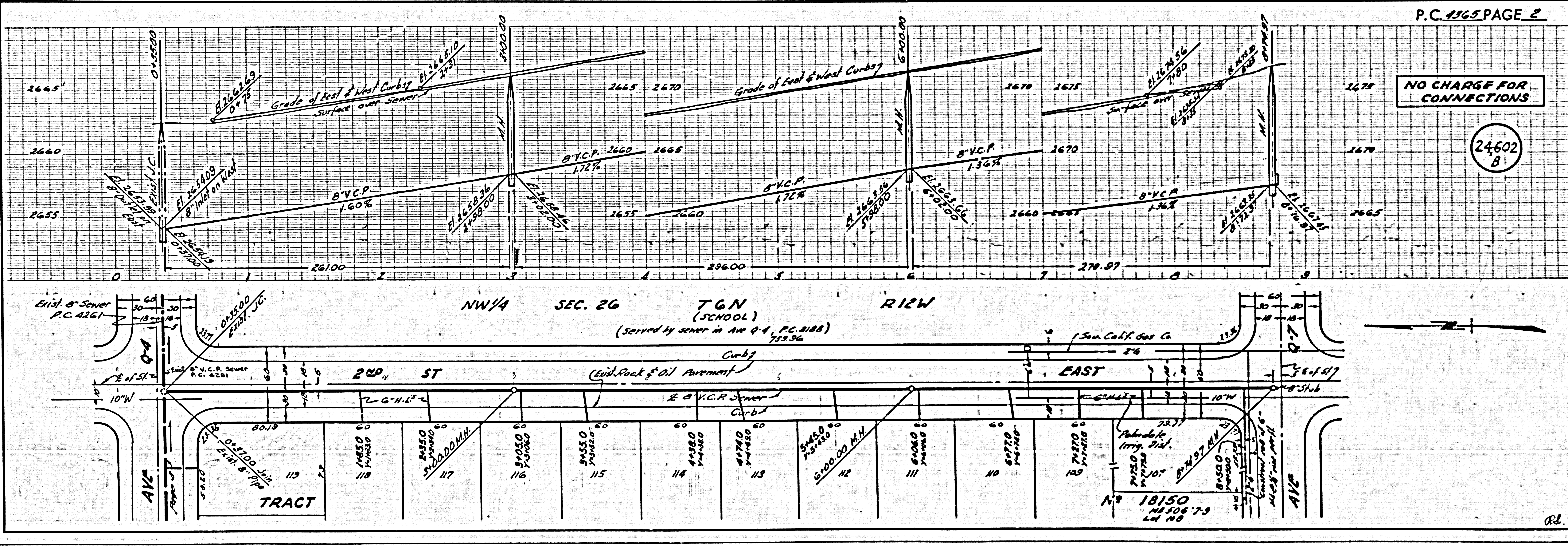
B.M. U.S. 3187 G-426, El. 2636.369 0.6 mi. N. along the S. Pac. Co. R.R. from the station @ Palmdale Los Angeles Co., 3 1/4 miles (about 45 yds) S. of milepost 413 about 25 yds N. of rd. crossing 413, 43' N. of E. of tracks, 60' E. of U.S. Hwy 6 & 35' N. of a pole, std. disk stamped G-426, 1928, set in top of concrete post.

- NOTES:
1. PROFILE STAKES ON THE PROPERTY LINE OR PROPERTY LINES PRODUCED AT RIGHT ANGLES TO THE SEWER LINE AT THE CENTER LINE OF EACH MANHOLE.
 2. NO REPRESENTATIVE OF THE COUNTY ENGINEER WILL SURVEY OR LAYOUT ANY PORTION OF THE WORK.
 3. THE OWNER OR HIS AUTHORIZED REPRESENTATIVE SHALL FURNISH THE COUNTY ENGINEER WITH GRADE SHEETS AND STATION FOR ALL HOUSE LATERALS AND Y BRANCHES AND SHALL PROVIDE STAKES FOR THEM AT THESE PROPER LOCATIONS WITH STATION AND PLAINLY MARKED. ANY CHANGE IN LOCATION SHALL BE INDICATED BY WRITING IN THE OWNER'S OR HIS REPRESENTATIVE'S.
 4. NO REVISIONS SHALL BE MADE IN THESE PLANS WITHOUT THE APPROVAL OF THE COUNTY ENGINEER.
 5. USE STANDARD MANHOLE FRAMES AND COVERS, S.A-117, EXCEPT AS NOTED.
 6. USE STANDARD STRENGTH PIPE EXCEPT AS NOTED.
 7. USE CHAMBER BODIES FOR ALL VENT-TO-CURB PIPES.
 8. RESURFACE ALL TRENCH WITHIN PAVED AREA TO 1/2" & A COUNTY ROAD DEPT., OR CALIF. STATE HIGHWAY DEPT. REQUIREMENTS IN ACCORDANCE WITH PLANS.
 9. ENCASE PLUMB FEET OF SEWER AT POINTS OF INTERFERENCE WITH POLES, S.A-119.
 10. HOUSE LATERALS TO BE CONSTRUCTED WITH INVERTS AT PROPERTY LINE 6" FEET BELOW CURB GRADE EXCEPT AS NOTED.
 11. ALL STRUCTURES SHALL BE BRICK SEWER STRUCTURES, S.A-104, EXCEPT AS NOTED.
 12. FOR ALLOWABLE SEWAGE TEST USE FORMULA NO. 1 SPEC. 1, SEC. 20.
 13. MANHOLE TOPS IN UNIMPROVED RIGHTS-OF-WAY TO BE 6" ABOVE FINISHED GRADE.
 14. Ball all pipe joints with 4" cement mortar that are within 20' of all property lines.
 15. The private engineer shall furnish the inverse lateral depth of the property line below the top of curb elevation for each house lateral on the grade sheet.

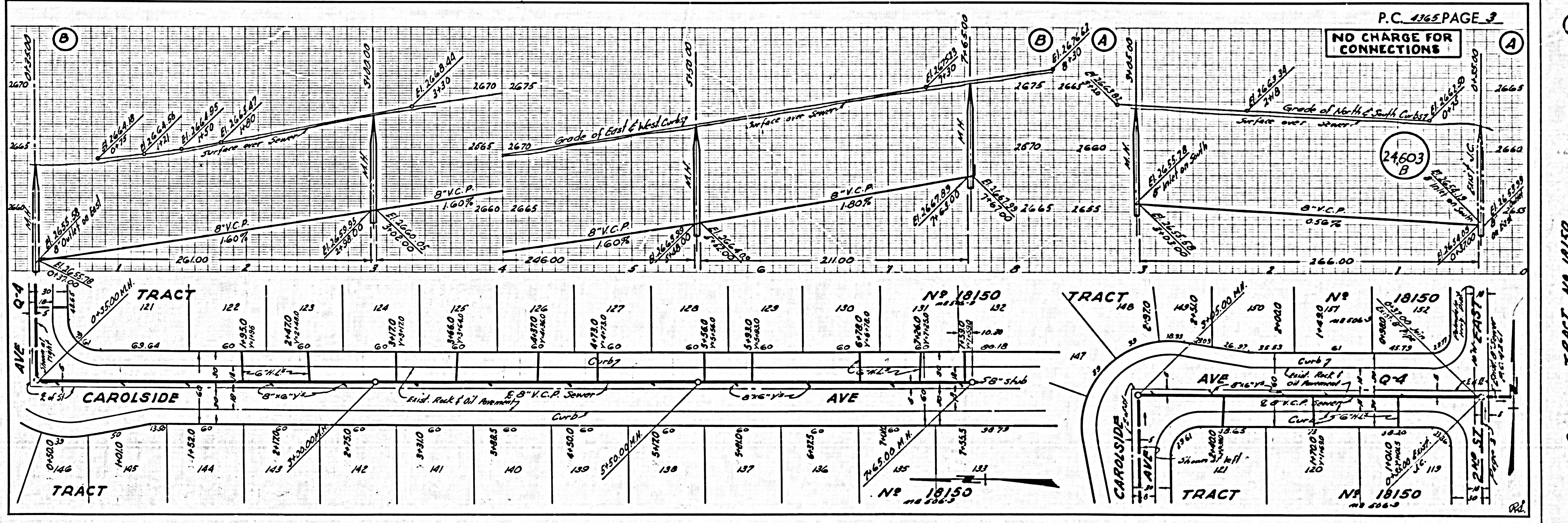


NO CHARGE FOR CONNECTIONS
[Signature] 5-21-57

INDEX MAP
 Scale: 1"=600'
 P.C. 4365



NO CHARGE FOR CONNECTIONS



(2)

P.C. TRACT NO 18150 725470