

LANCASTER BLDG. DIST. NO. 8

PROFILE ALIGNMENT AND GRADE OF P.C. 4376
SANITARY SEWERS PAGE 1
TO BE CONSTRUCTED IN

TRACT No 23827
PRIVATE CONTRACT NO. 4376
W.S. 71
2 SHEETS, 4 PAGES

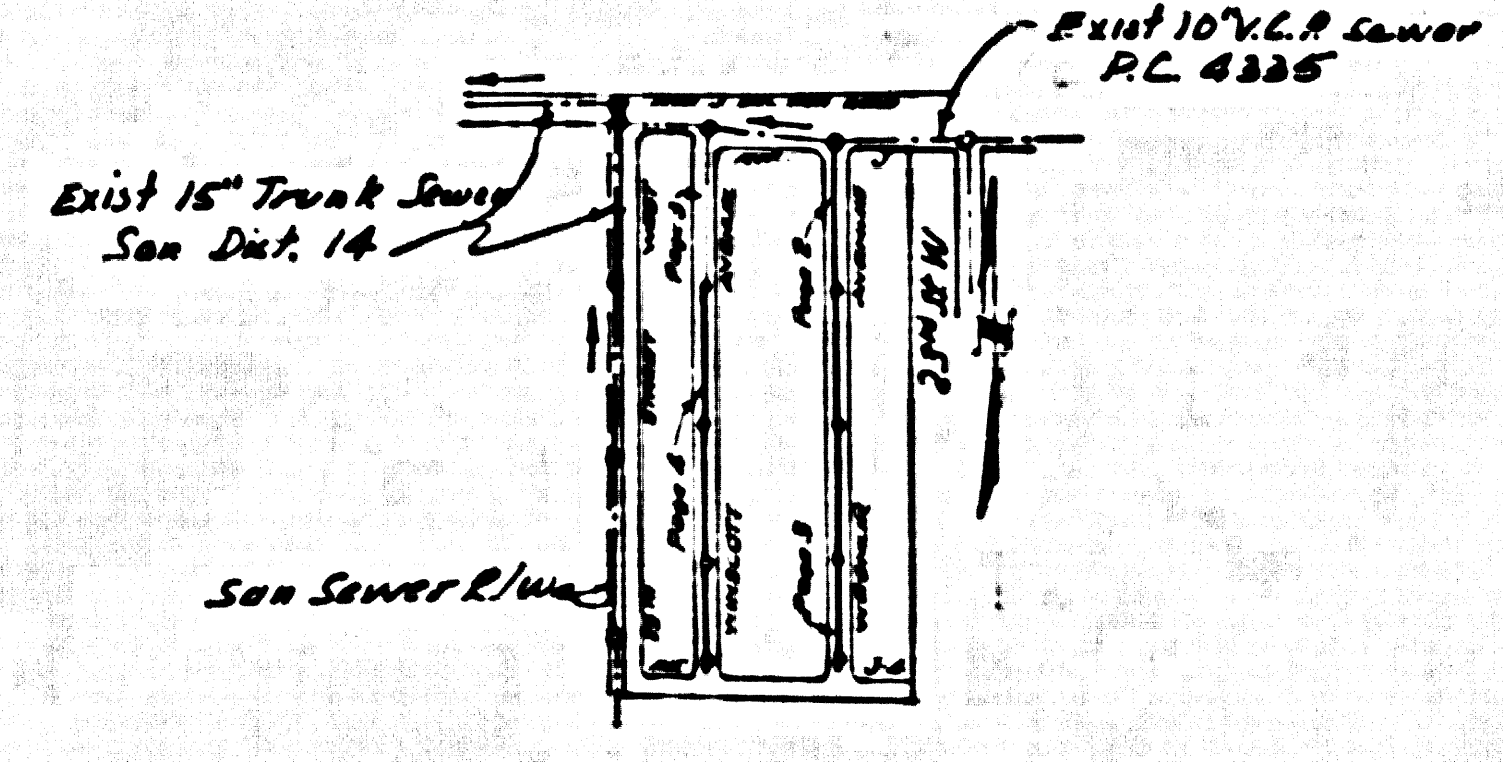
SCALE: VERT. 1" = 4' HORIZ. 1" = 40'
MARCH, 1957
PREPARED IN THE OFFICES OF
RALPH B. NUNNELLEY

By Ralph B. Nunnelley
REG. C. E. NO. 6000
FOR LEGEND SEE PLAN NO. S-A-64

- NOTES:
- PROVIDE STAKES ON THE PROPERTY LINE OR PROPERTY LINES PRODUCED AT RIGHT ANGLES TO THE CENTER LINE OF EACH MANHOLE.
 - NO REPRESENTATIVE OF THE COUNTY ENGINEER WILL SURVEY OR LAY OUT ANY PORTION OF THE WORK.
 - THE OWNER OR HIS AUTHORIZED REPRESENTATIVE SHALL FURNISH THE COUNTY ENGINEER WITH GRADE SHEETS AND STATION FOR ALL HOUSE LATERALS AND Y BRANCHES AND SHALL PROVIDE STAKES FOR THEM AT THEIR PROPER LOCATIONS WITH BRANCHING PLANT MARKERS, ANY CHANGES IN LOCATION SHALL BE FORWARDED BY WRITING BY THE OWNER OR HIS REPRESENTATIVE.
 - NO REVISIONS SHALL BE MADE IN THESE PLANS WITHOUT THE APPROVAL OF THE COUNTY ENGINEER.
 - USE STANDARD MANHOLE FRAMES AND COVERS, S.A.-117, EXCEPT AS NOTED.
 - USE STANDARD STRENGTH PIPE EXCEPT AS NOTED.
 - USE CEMENT MORTAR FOR ALL VITRIFIED CLAY PIPE JOINTS.
 - RESURFACE ALL TRENCH WITHIN PAVED AREA TO MEET L. A. COUNTY ROAD DEPT. OR CALIF. STATE HIGHWAY DEPT. REQUIREMENTS IN ACCORDANCE WITH PERMITS.
 - SHOULDER FOUR FEET OF SEWER AT POINTS OF INTERFERENCE WITH POLES, S.A. 119.
 - HOUSE LATERALS TO BE CONSTRUCTED WITH INVERTS AT PROPERTY LINE 6" FEET BELOW CURB GRADE EXCEPT AS NOTED.
 - ALL STRUCTURES SHALL BE BRICK REVENUE STRUCTURES, S.A. 194, EXCEPT AS NOTED.
 - FOR ALLOWABLE SEWERAGE TEST USE FORMULA NO. 1, S.E.C. 1, SEC. 10.
 - MANHOLE TOPS IN UNIMPROVED RIGHTS-OF-WAY TO BE 6" ABOVE FINISHED GRADE.
 - 10 - Set all pipe joints with 4" of cement mortar that are within 20' of Property Lines or in Sanitary Sewer Rights of Way.
 11. The Private Engineer is to furnish the house lateral depth at the Property Line below the top of Curb Elevation for each House Lateral on the grade sheet.

NO CHARGE FOR CONNECTIONS
7-27-57
P.C. 4376

B.M. L.A. Co. Rd. Dept. SL12 EL. 2361.994
L.B.N. in ch. N.E. Cor. 10th St. W. & AVE. J

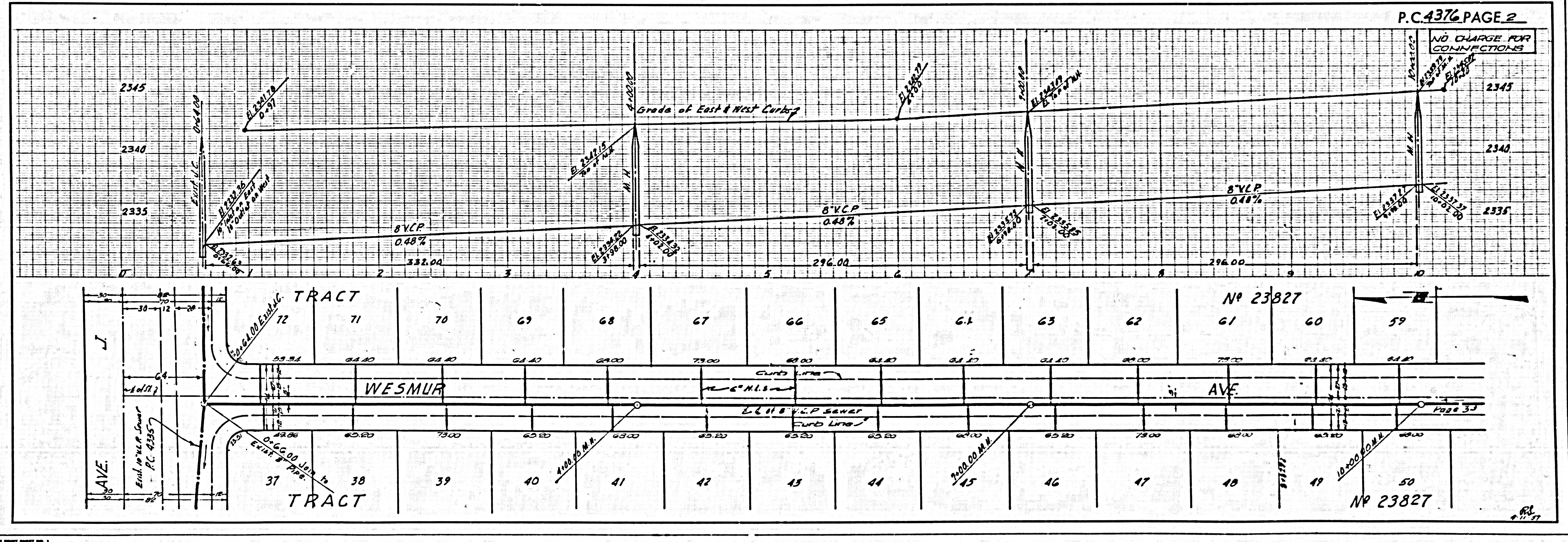


INDEX MAP
TRACT No 23827
P.C. 4376 SCALE 1" = 400'

NOTES:
GRADES TO WHICH THIS IMPROVEMENT IS TO BE CONSTRUCTED ARE SHOWN ON PLANS AND PROFILES. GRADE POINTS FOR TOP OF CURB, CENTER LINE OF STREET, OR CENTER LINE OF ALLEYS ARE SHOWN BY CIRCLES ON PROFILES AT ALL POINTS BETWEEN DESIGNATED POINTS. THE GRADE SHALL BE BEHIND SO AS TO CORRESPOND TO A GRADE LINE DRAWN BETWEEN SAID DESIGNATED POINTS.
ELEVATIONS ARE IN FEET ABOVE U.S.C. & G.S. MEAN SEA LEVEL DATUM OF 1929.
THIS DRAWING AND THE DATA HEREON ARE HEREBY MADE A PART OF THE SPECIFICATIONS.
WORK SHALL BE CONSTRUCTED ACCORDING TO SPECIFICATIONS ON FILE IN THE OFFICE OF THE COUNTY ENGINEER AND SHALL BE PROSECUTED ONLY IN THE PRESENCE OF THE COUNTY ENGINEER.
BEFORE WORK CAN BE STARTED, THE CONTRACTOR MUST OBTAIN A PERMIT TO EXCAVATE OR CONSTRUCT FROM THE L. A. COUNTY ROAD DEPT., 100 W. 5th ST. AND MAKE A DEPOSIT WITH THE COUNTY ENGINEER, ROOM 204 FARM ARCADE BLDG., 333 SO. BROADWAY SUFFICIENT TO COVER THE COST OF CONSTRUCTION INSPECTION AND RECORD PLANS.
APPROVAL OF THIS PLAN BY THE COUNTY OF LOS ANGELES DOES NOT CONSTITUTE A REPRESENTATION AS TO THE ACCURACY OR THE LOCATION OF OR THE EXISTENCE OR NON-EXISTENCE OF ANY UNDERGROUND UTILITY PIPE, OR STRUCTURE WITHIN THE LIMITS OF THIS PROJECT. THIS NOTE APPLIES TO ALL PAGES.
IF WORK IS TO BE DONE IN A STATE HIGHWAY, A PERMIT MUST BE OBTAINED FROM THE STATE OF CALIFORNIA, DIVISION OF HIGHWAYS, 120 SOUTH BRIDGE STREET.

COUNTY OF LOS ANGELES, CALIFORNIA

APPROVED, JOHN A. LAMBE, COUNTY ENGINEER
APPROVED, A. M. BAWEL, CHIEF ENGINEER
BY A.P. Collins BY P. Costantino
SANITATION ENGINEER OFFICE ENGINEER
CHECKED BY St. Onda 4-15-57
OFFICE OF COUNTY ENGINEER, REG. C. E. NO. 3406



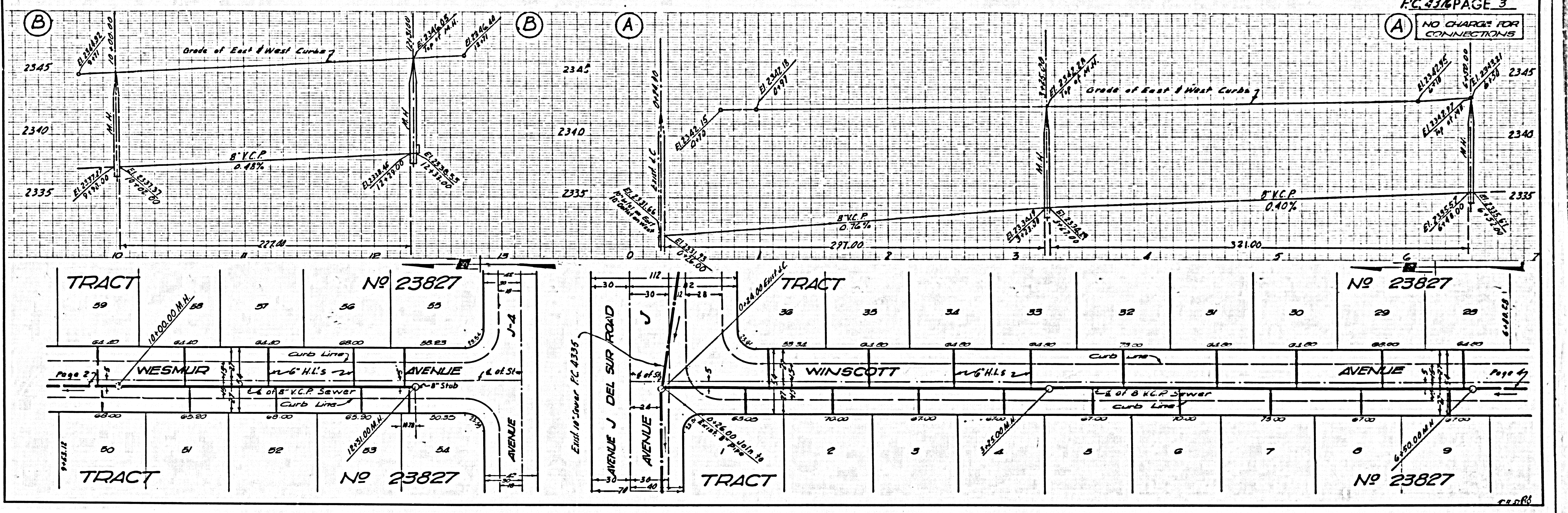
P.C. 4376 PAGE 2

NO CHARGE FOR CONNECTIONS

No 23827

No 23827

NO CHARGE FOR CONNECTIONS



NO CHARGE FOR CONNECTIONS

