

TEMPLE CITY BLDG. DIST. NO. 5

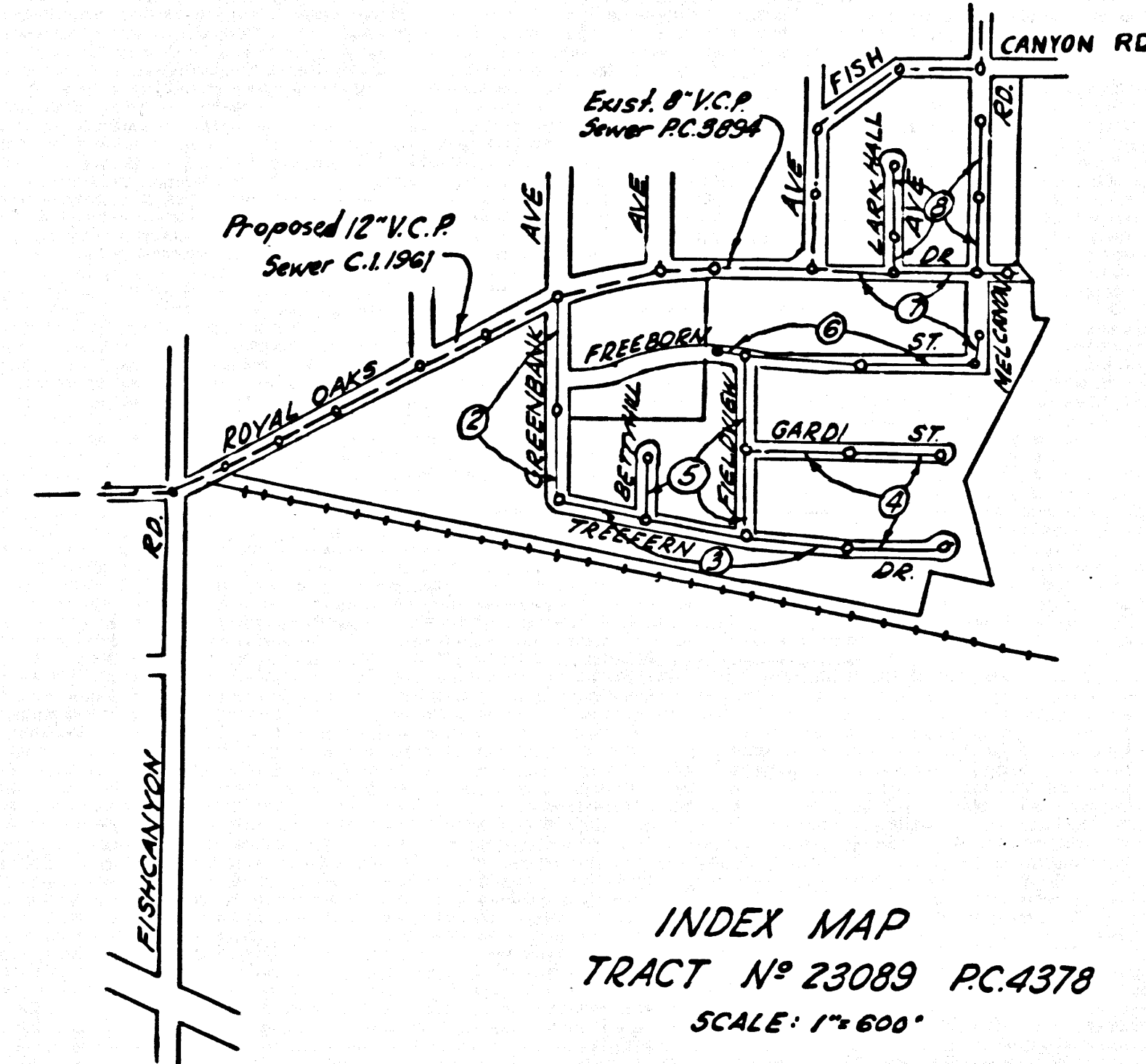
PROFILE ALIGNMENT AND GRADE OF P.C. 4378
 SANITARY SEWERS PAGE 1
 TO BE CONSTRUCTED IN
 TRACT N° 23089 (25,622)

PRIVATE CONTRACT NO. 4378

W.S. 47
 4 SHEETS; 8 PAGES
 SCALE: VERT. 1" = 4'
 HORIZ. 1" = 40' MAR., 1957
 PREPARED IN THE OFFICES OF
 ADAMS & ELLS ENGINEERS
 BY: [Signature] REG. C. E. NO. 617
 FOR LEGEND SEE PLAN NO. S-A-64

B.M. U.S. 376 E.I. 579.933 (Adj. 1934)
 A Bronze Tablet encased in Conc. post 35' N.Y.
 & 20' E. of Fish Canyon Rd. & Fairhill Blvd. Stamped 5-57-1923

- NOTES:
- PROVIDE STAKES ON THE PROPERTY LINE OR PROPERTY LINES PRODUCED AT RIGHT ANGLES TO THE SEWER LINE AT THE CENTER LINE OF EACH MANHOLE.
 - NO REPRESENTATIVE OF THE COUNTY ENGINEER WILL SURVEY OR LAYOUT ANY PORTION OF THE WORK.
 - THE OWNER OR HIS AUTHORIZED REPRESENTATIVE SHALL FURNISH THE COUNTY ENGINEER WITH GRADE SHEETS AND STATION FOR ALL HOUSE LATERALS AND Y BRANCHES AND SHALL PROVIDE STAKES FOR THEM AT THEIR PROPER LOCATIONS WITH STATIONING PLAINLY MARKED. ANY CHANGE IN LOCATION SHALL BE REQUESTED IN WRITING BY THE OWNER OR HIS REPRESENTATIVE.
 - NO REVISIONS SHALL BE MADE IN THESE PLANS WITHOUT THE APPROVAL OF THE COUNTY ENGINEER.
 - USE STANDARD MANHOLE FRAMES AND COVERS, S-A-117, EXCEPT AS NOTED.
 - USE STANDARD STRENGTH PIPE EXCEPT AS NOTED.
 - USE CEMENT MORTAR FOR ALL VITRIFIED CLAY PIPE JOINTS.
 - RESURFACE ALL TRENCH WITHIN PAVED AREA TO MEET L. A. COUNTY ROAD DEPT., OR CALIF. STATE HIGHWAY DEPT. REQUIREMENTS IN ACCORDANCE WITH PERMITS.
 - ENCASE FOUR FEET OF SEWER AT POINTS OF INTERFERENCE WITH POLES, S-A-119.
 - HOUSE LATERALS TO BE CONSTRUCTED WITH INVERTS AT PROPERTY LINE 6 FEET BELOW CURB GRADE EXCEPT AS NOTED.
 - ALL STRUCTURES SHALL BE BRICK SEWER STRUCTURES, S-A-104, EXCEPT AS NOTED.
 - FOR ALLOWABLE LEAKAGE TEST USE FORMULA NO. 1 SPEC'S. SEC. 36.
 - MANHOLE TOPS IN UNIMPROVED RIGHTS-OF-WAY TO BE 6" ABOVE FINISHED GRADE.
 - The Private Engineer is to furnish the House Lateral depth at the property line below the top of Curb elevation for each House Lateral on the Grade Sheet.



COLLECT CHARGES AS INDICATED

NOTE: ISSUE NO PERMITS FROM THIS PLAN UNTIL OUTFALL SEWER CONSTRUCTED. CALL MAIN OFFICE FOR INFORMATION.

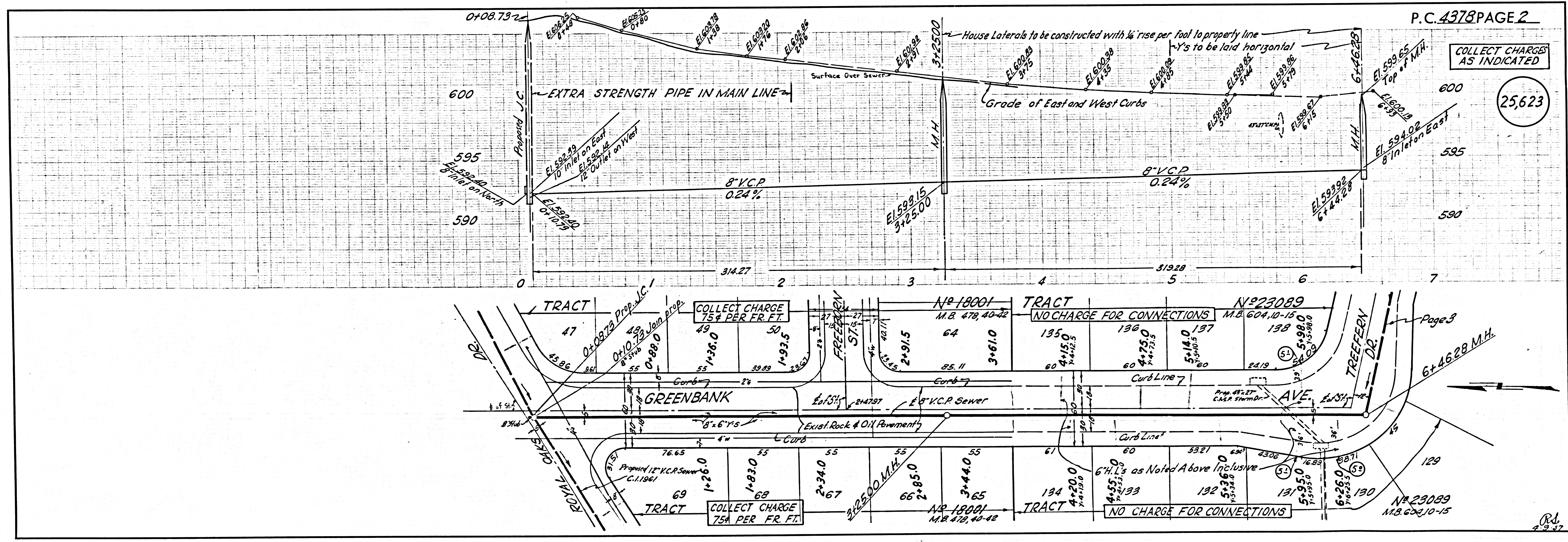
APPROVAL OF THIS PLAN BY THE COUNTY OF LOS ANGELES DOES NOT CONSTITUTE A GUARANTEE THAT THE PIPES AND STRUCTURES OF THE PROPOSED OUTLET SEWER, C.I. 1961, WILL HAVE THE LOCATIONS AND ELEVATIONS SHOWN HEREON, NOR THAT SAID C.I. 1961 WILL BE CONSTRUCTED.

NOTE: GRADES TO WHICH THIS IMPROVEMENT IS TO BE CONSTRUCTED ARE SHOWN ON PLANS AND PROFILES. GRADE POINTS FOR TOP OF CURBS, CENTER LINE OF STREETS, OR CENTER LINE OF ALLEYS ARE SHOWN BY CIRCLES ON PROFILES. AT ALL POINTS BETWEEN DESIGNATED POINTS THE GRADE SHALL BE ESTABLISHED SO AS TO CONFORM TO A STRAIGHT LINE DRAWN BETWEEN SAID DESIGNATED POINTS.
 ELEVATIONS ARE IN FEET ABOVE U.S.C.G.S. SEA LEVEL DATUM OF 1929.
 THIS DRAWING AND THE DATA HEREON ARE HEREBY MADE A PART OF THE SPECIFICATIONS.
 WORK SHALL BE CONSTRUCTED ACCORDING TO SPECIFICATIONS ON FILE IN THE OFFICE OF THE COUNTY ENGINEER AND SHALL BE PROSECUTED ONLY IN THE PRESENCE OF THE COUNTY ENGINEER.
 BEFORE WORK CAN BE STARTED, THE CONTRACTOR MUST OBTAIN A PERMIT TO EXCAVATE IN COUNTY STREETS FROM THE L. A. COUNTY ROAD DEPT., 108 W. 2ND ST. AND MAKE A DEPOSIT WITH THE COUNTY ENGINEER, ROOM 254 PAN AMERICAN BUILDING, 325 S.O. BROADWAY SUFFICIENT TO COVER THE COST OF CONSTRUCTION INSPECTION AND RECORD PLANS.
 APPROVAL OF THIS PLAN BY THE COUNTY OF LOS ANGELES DOES NOT CONSTITUTE A REPRESENTATION AS TO THE ACCURACY OF THE LOCATION OF OR THE EXISTENCE OR NON-EXISTENCE OF ANY UNDERGROUND UTILITY PIPE, OR STRUCTURE WITHIN THE LIMITS OF THIS PROJECT. THIS NOTE APPLIES TO ALL PAGES.
 IF WORK IS TO BE DONE IN A STATE HIGHWAY, A PERMIT MUST BE OBTAINED FROM THE STATE OF CALIFORNIA, DIVISION OF HIGHWAYS, 120 SOUTH SPRING STREET.
 COUNTY OF LOS ANGELES, CALIFORNIA
 APPROVED, JOHN A. LAMBIE, COUNTY ENGINEER APPROVED, A. M. RAWN, CHIEF ENGINEER
 BY: [Signature] SANITATION ENGINEER BY: [Signature] OFFICE ENGINEER
 CHECKED BY: [Signature] S-10-57
 OFFICE OF COUNTY ENGINEER, REG. C. E. NO. 3406

P.C. 4378 PAGE 2

COLLECT CHARGES AS INDICATED

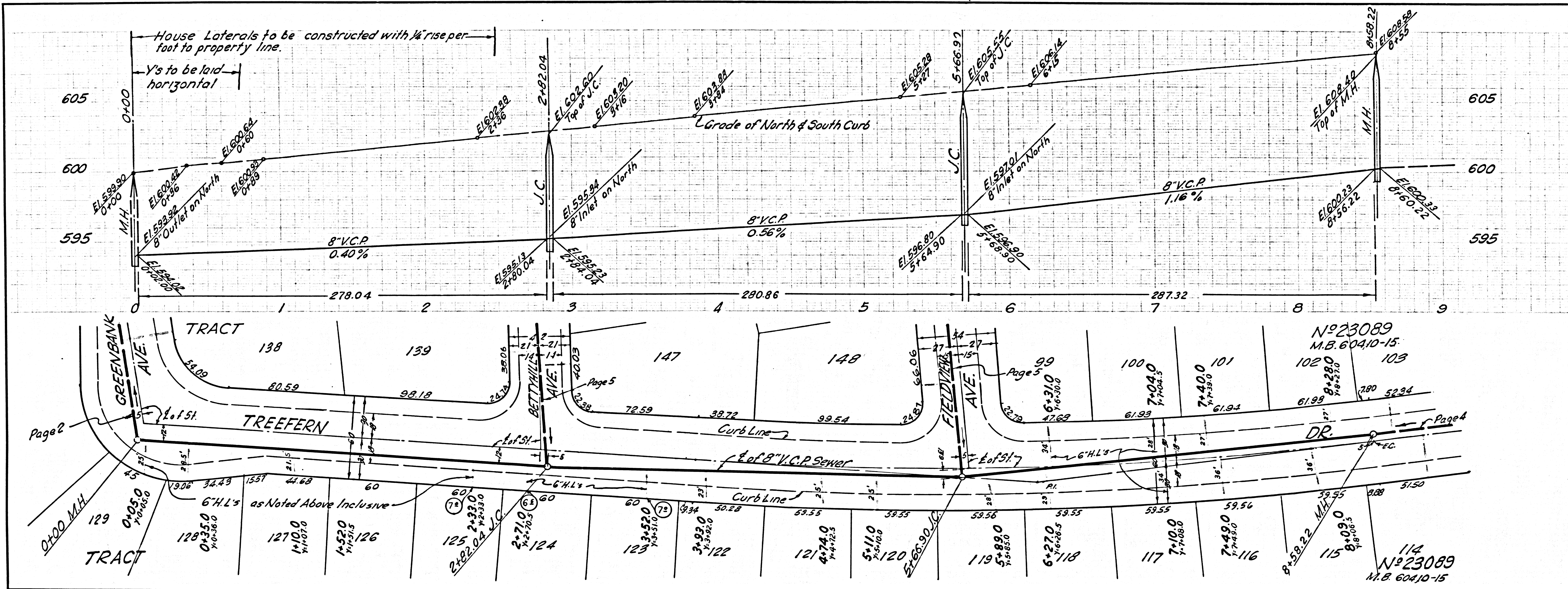
(25,623)



Page 3

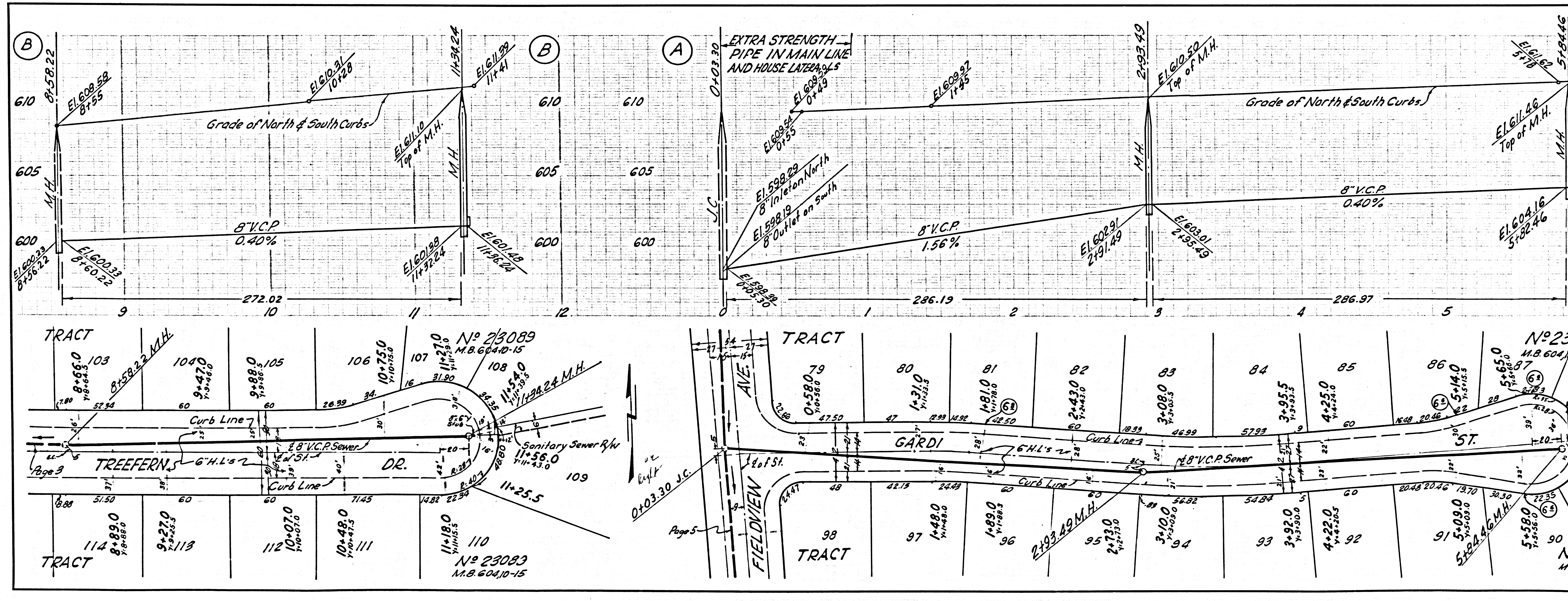
NO CHARGE FOR CONNECTIONS

25,624

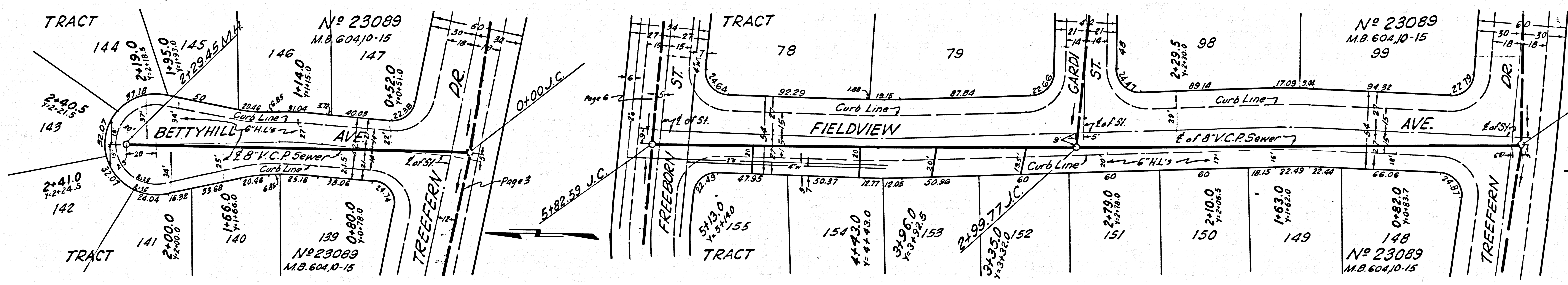
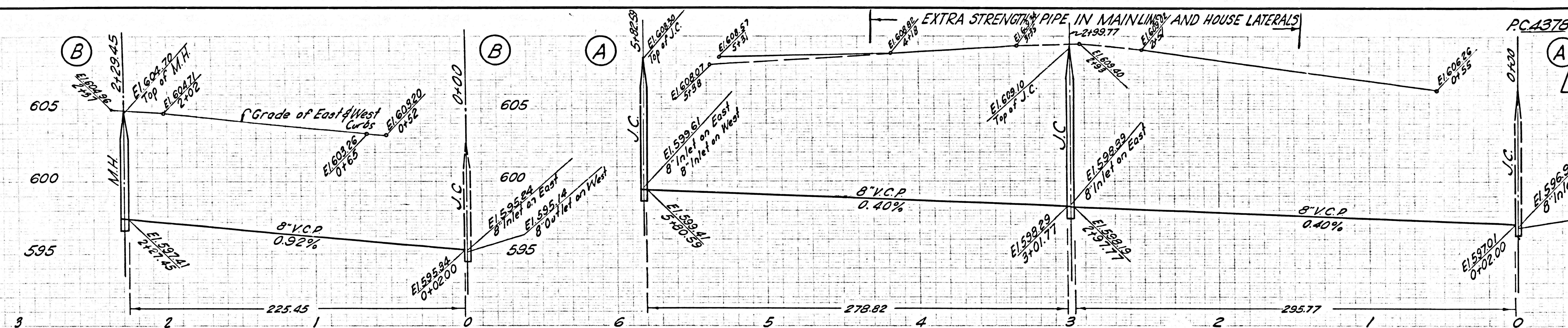


NO CHARGE FOR CONNECTIONS

25,625



NO CHARGE FOR CONNECTIONS



NO CHARGE FOR CONNECTIONS

