

BM TE-610, Elev. 506.304, F.B. 1588 pg. 36  
 San Gabriel Blvd. & Clarence Ave. N.E. cor.  
 Blot spike in curb, @ N. of N. and C.R.

**TEMPLE CITY BLDG. DIST. No. 5**

- NOTES**
1. PROVIDE STAKES ON THE PROPERTY LINE OR PROPERTY LINES PRODUCED AT RIGHT ANGLES TO THE SEWER LINE AT THE CENTER LINE OF EACH MANHOLE.
  2. NO REPRESENTATIVE OF THE COUNTY ENGINEER WILL SUPERVISE OR LAY OUT ANY PORTION OF THE WORK.
  3. THE OWNER OR HIS AUTHORIZED REPRESENTATIVE SHALL FURNISH THE COUNTY ENGINEER WITH GRADE SHEETS AND SETTING FOR ALL HOUSE LATERALS AND Y BRANCHES AND SHALL FURNISH STAKES FOR THEM AT THEIR PROPER LOCATIONS WITH SETTING PLAINLY MARKED. ANY CHANGE IN LOCATION SHALL BE REQUESTED BY WRITING BY THE OWNER OR HIS REPRESENTATIVE.
  4. NO REVISIONS SHALL BE MADE IN THESE PLANS WITHOUT THE APPROVAL OF THE COUNTY ENGINEER.
  5. USE STANDARD MANHOLE FRAMES AND COVERS 24" DIA.
  6. USE STANDARD STRENGTH PIPE, EXCEPT AS NOTED.
  7. USE CEMENT PORTLAND FOR ALL STATED CLAY PIPE JOINTS.
  8. RESURFACE ALL TRENCH WITHIN PAVED AREA TO MEET L.A. COUNTY ROAD DEPT. OR CALIF. STATE HIGHWAY DEPT. REQUIREMENTS IN ACCORDANCE WITH PERMITS.
  9. ENCASE FOUR FEET OF SEWER AT POINTS OF INTERFERENCE WITH POLES, CASE III, S-D-17E.
  10. ALL STRUCTURES SHALL BE BRICK, SEWER STRUCTURES, 8" DIA.
  11. FOR ALLOWABLE LEAKAGE TEST USE PENHILL P.M.I., SPEC. SEC. 34.
  12. MANHOLE TOP IN RIGHT OF WAY TO BE LEVEL WITH FINISHED SURFACE.
- NOTE:** THE CONTRACTOR SHALL NOTIFY THE CONSTRUCTION & STORM DRAIN DIVISION BY TELEPHONE, MADISON 9-4747, EXT. 362, AT LEAST 24 HOURS BEFORE STARTING ANY WORK UNDER THIS CONTRACT.

PROFILE, ALIGNMENT AND GRADE OF **P.C. 4379**  
**SANITARY SEWERS** PAGE 1  
 TO BE CONSTRUCTED IN

**RIGHT OF WAY SOUTH OF CLARENCE AVENUE**

**PRIVATE CONTRACT NO. 4379**

W.S. 44  
 1 SHEET, 1 PAGE  
 SCALE VERT. 1"=4'  
 HORIZ. 1"=40'  
 APRIL 1957

24,870

PREPARED IN THE OFFICES OF  
**CHARLES E. GLIDDEN**

UNDER THE SUPERVISION OF *Charles E. Glidden*  
 LICENSE NO. 7737

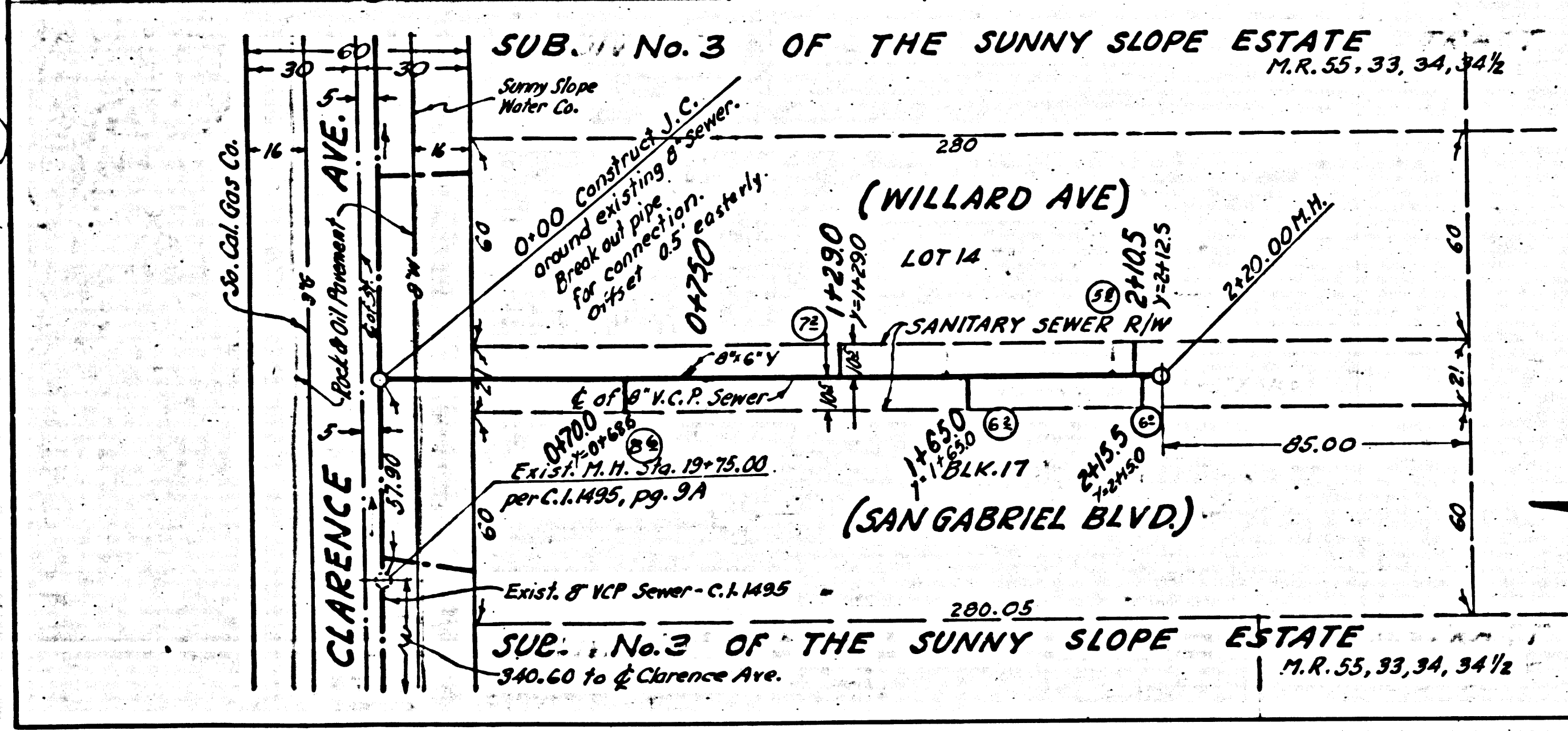
FOR LEGEND SEE PLAN NO. S-A-64

**NOTE:**  
 GRIDES TO WHICH THIS IMPROVEMENT IS TO BE CONSTRUCTED ARE SHOWN ON PLANS AND PROFILES. GRADE POINTS FOR TOP OF CURBS, CENTER LINE OF STREETS OR CENTER LINE OF ALLEYS ARE SHOWN BY CIRCLES ON PROFILES. AT ALL POINTS BETWEEN DESIGNATED POINTS THE GRADE SHALL BE ESTABLISHED AS TO CONFORM TO A STRAIGHT LINE DRAWN BETWEEN SAID DESIGNATED POINTS.  
 ELEVATIONS ARE IN FEET ABOVE U.S.C. & G.S. SEA LEVEL DATUM OF 1929.  
 THIS DRAWING AND THE DATA HEREON ARE HEREBY MADE A PART OF THE SPECIFICATIONS.  
 WORK SHALL BE CONSTRUCTED ACCORDING TO SPECIFICATIONS ON FILE IN THE OFFICE OF THE COUNTY ENGINEER AND SHALL BE PROSECUTED ONLY IN THE PRESENCE OF THE COUNTY ENGINEER.  
 BEFORE WORK CAN BE STARTED THE CONTRACTOR MUST OBTAIN A PERMIT TO EXCAVATE IN COUNTY STREETS FROM THE L.A. COUNTY ROAD DEPT. 100 W. 4TH ST. AND MAKE A DEPOSIT WITH THE COUNTY ENGINEER, ROOM 200 SAN AMERICAN BLDG., 220 S. BROADWAY, SUFFICIENT TO COVER THE COST OF CONSTRUCTION INSPECTION AND RECORD PLANS.  
 APPROVAL OF THIS PLAN BY THE COUNTY OF LOS ANGELES DOES NOT CONSTITUTE A REPRESENTATION AS TO THE ACCURACY OF THE LOCATION OR OF THE EXISTENCE OR NON-EXISTENCE OF ANY UNDERGROUND UTILITY, PIPE OR STRUCTURE WITHIN THE LIMITS OF THIS PROJECT. THIS NOTE APPLIES TO ALL PARTS OF THIS PROJECT.  
 IF WORK IS TO BE DONE IN A STATE HIGHWAY, A PERMIT MUST BE OBTAINED FROM THE STATE OF CALIFORNIA, DIVISION OF HIGHWAYS, 100 SOUTH SPRING STREET.

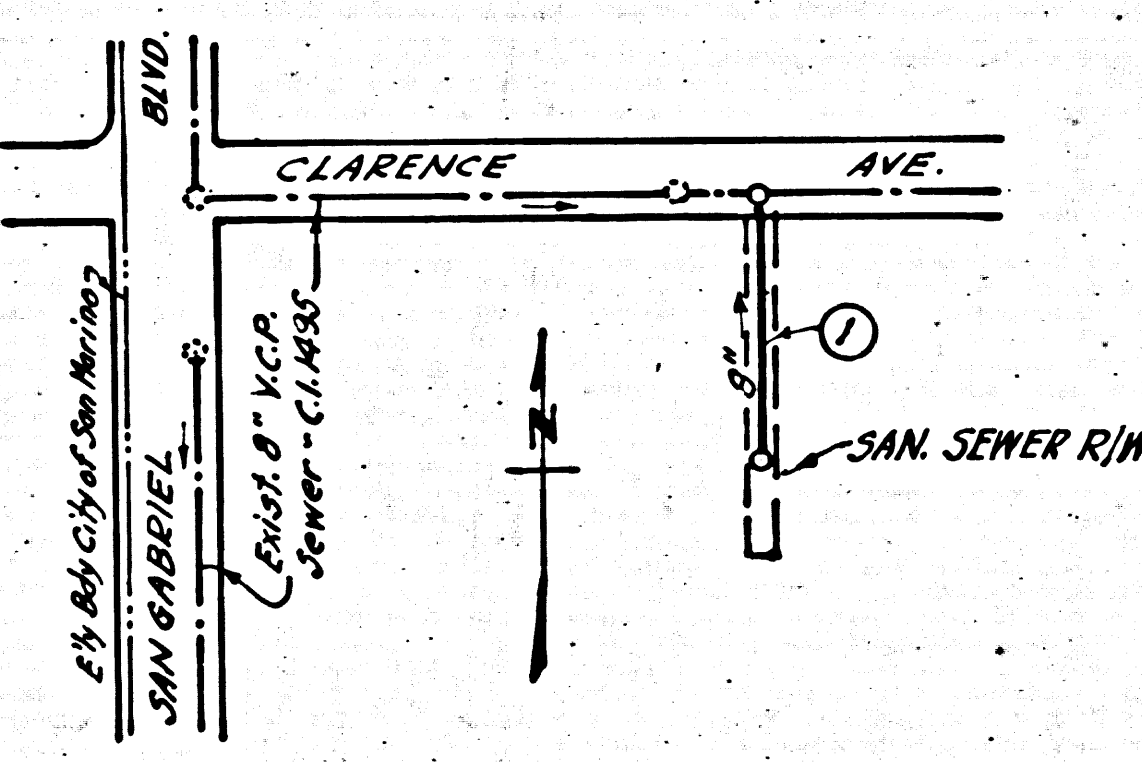
**COUNTY OF LOS ANGELES, CALIFORNIA**

APPROVED, JOHN A. LAMBIE, COUNTY ENGINEER  
 APPROVED, A. M. GINN, CHIEF ENGINEER  
 BY: *N. F. Brumby* BY: *A. M. Ginn*  
 ASST. SANITATION ENGINEER OFFICE ENGINEER  
 CHECKED BY: *R. V. Onda 7-11-57*  
 OFFICE OF COUNTY ENGINEER REG. C.E. NO. 9466

PC-4379



NO CHARGE FOR CONNECTIONS  
 3/2/57



INDEX MAP  
 P.C. 4379  
 Scale - 1"=200'

40