

SAN DIMAS BLDG. DIST. NO. 10

PROFILE ALIGNMENT AND GRADE OF P.C. 4382
SANITARY SEWERS PAGE 1
 TO BE CONSTRUCTED IN

R/W NORTH OF CIENEGA AVE. (24,768)

PRIVATE CONTRACT NO. 4382

W.S. 48
 1 SHEET, 2 PAGES

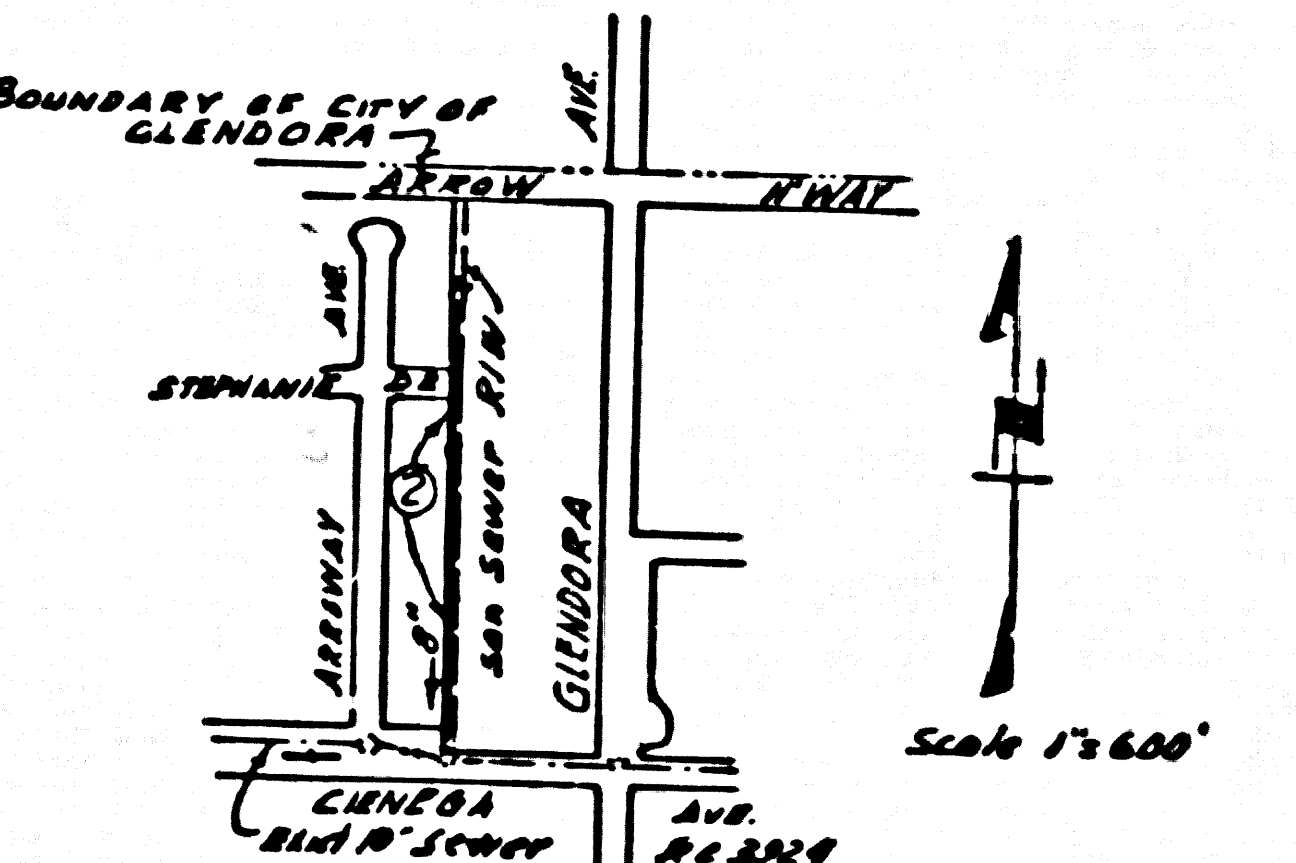
SCALE: HORIZ. 1" = 40' VERT. 1" = 4'
 MARCH, 1957
 PREPARED IN THE OFFICES OF
HAROLD L. JOHNSON

REG. C. E. NO. 7588

FOR LEGEND SEE PLAN NO. S-A-64

B.M. S.G.-51 EL 673.367
 127' near M.C.R. @ S.E. Cor.
 Glendora Ave. & Covino Blvd.

- NOTES**
- PROFILES STAKED ON THE PROPERTY LINE OR PROPERTY LINES PRODUCED AT RIGHT ANGLES TO THE CENTER LINE AT THE CENTER LINE OF EACH PARCEL.
 - NO REPRESENTATIVE OF THE COUNTY ENGINEER SHALL SURVEY OR LAYOUT ANY PORTION OF THE WORK.
 - THE OWNER OR HIS AUTHORIZED REPRESENTATIVE SHALL FURNISH THE COUNTY ENGINEER WITH GRADE SHEETS AND STATION FOR ALL HOUSE LATERALS AND Y BRANCHES AND 8" V.C.P. PROFILES FOR THEM AT THEIR PROPER LOCATIONS WITH STATIONS AND PLANNED MATHS. ANY CHANGE IN LOCATION SHALL BE REQUESTED IN WRITING BY THE OWNER OR HIS REPRESENTATIVE.
 - NO REVISIONS SHALL BE MADE BY THESE PLANS WITHOUT THE APPROVAL OF THE COUNTY ENGINEER.
 - USE STANDARD BRANCO PIPES AND COVERS, S.A. 117, EXCEPT AS NOTED.
 - USE STANDARD STRENGTH PIPE EXCEPT AS NOTED.
 - USE CEMENT MORTAR FOR ALL WITHESED CLASS PIPE JOINTS.
 - RESURFACE ALL TRENCHES WITHIN PAVED AREA TO MEET L.A. COUNTY ROAD DEPT. OR CALIF. STATE HIGHWAY DEPT. REQUIREMENTS BY ACCORDANCE WITH PERMITS.
 - ENCASE FOUR FEET OF SEWER AT POINTS OF INTERFERENCE WITH POLES, S.A. 117.
 - HOUSE LATERALS TO BE CONSTRUCTED WITHIN SHADY-UP PROPERTY LINE - FEET SHOWN - CURB GRABBY - AS NOTED.
 - ALL STRUCTURES SHALL BE BRICK SEWER STRUCTURES, 1-A-104, EXCEPT AS NOTED.
 - FOR ALLOWABLE LEAKAGE TEST USE FORMULA NO. 1 - S.P.C.'S, SEC. 3.
 - MANHOLE TOPS BY UNAPPROVED RIGHTS-OF-WAY TO BE 4" ABOVE FINISHED GRADE.



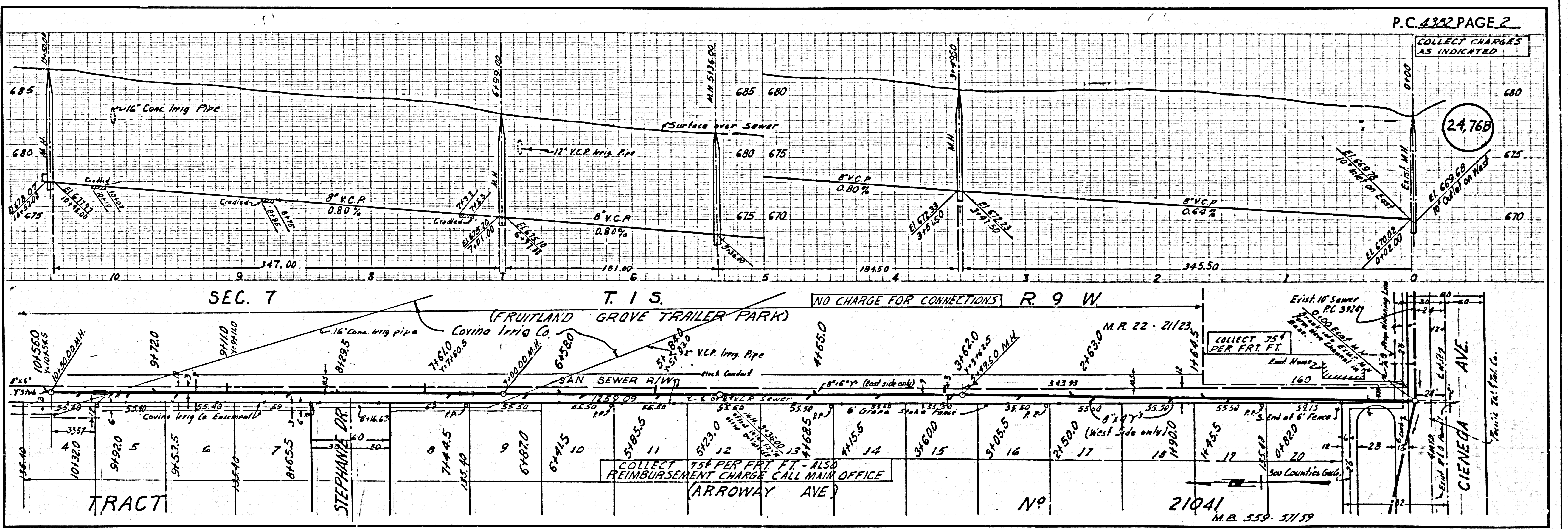
INDEX MAP
 P.C. 4382

COLLECT CHARGES AS INDICATED

NOTE:
 GRADES TO WHICH THIS IMPROVEMENT IS TO BE CONSTRUCTED ARE SHOWN ON PLANS AND PROFILE. GRADE POINTS FOR TOP OF CURB, CENTER LINE OF STREETS, OR CENTER LINE OF ALLEYS ARE SHOWN BY CIRCLES OR PROFILES AT ALL POINTS BETWEEN DESIGNATED POINTS THE GRADE SHALL BE ESTABLISHED SO AS TO CONFORM TO A STRAIGHT LINE DRAWN BETWEEN SAID DESIGNATED POINTS.
 ELEVATIONS ARE IN FEET ABOVE U.S.C. & G.S. MEAN SEA LEVEL DATUM OF 1929.
 THE DRAWINGS AND THE DATA HEREON ARE HEREBY MADE A PART OF THE SPECIFICATIONS.
 WORK SHALL BE CONSTRUCTED ACCORDING TO SPECIFICATIONS ON FILE IN THE OFFICE OF THE COUNTY ENGINEER AND SHALL BE INSPECTED ONLY IN THE PRESENCE OF THE COUNTY ENGINEER.
 BEFORE WORK CAN BE STARTED, THE CONTRACTOR MUST OBTAIN A PERMIT TO EXCAVATE IN COUNTY STREETS FROM THE L.A. COUNTY ROAD DEPT. 128 W 2ND ST AND SHALL A DEPOSIT WITH THE COUNTY ENGINEER \$2000 PER AMERICAN BUILDING 213 30 BROADWAY SUFFICIENT TO COVER THE COST OF CONSTRUCTION INSPECTION AND RECORD PLANS.
 APPROVAL OF THIS PLAN BY THE COUNTY OF LOS ANGELES DOES NOT CONSTITUTE A REPRESENTATION AS TO THE ACCURACY OF THE LOCATION OR OF THE EXISTENCE OR NON-EXISTENCE OF ANY UNDERGROUND UTILITY PIPE, OR STRUCTURE WITHIN THE LIMITS OF THIS PROJECT. THIS NOTE APPLIES TO ALL PAGES.
 IF WORK IS TO BE DONE IN A STATE HIGHWAY, A PERMIT MUST BE OBTAINED FROM THE STATE OF CALIFORNIA, DIVISION OF HIGHWAYS, 128 SOUTH SPRING STREET.

COUNTY OF LOS ANGELES, CALIFORNIA

APPROVED, JOHN A. LAMBE, COUNTY ENGINEER
 APPROVED, A. M. BAWN, CHIEF ENGINEER
 BY *[Signature]* BY *[Signature]*
 SANITATION ENGINEER OFFICE ENGINEER
 CHECKED BY *[Signature]*
 OFFICE OF COUNTY ENGINEER, REG. C. E. NO. 19,637



P.C. 4382 PAGE 2

COLLECT CHARGES AS INDICATED

(24,768)

NO CHARGE FOR CONNECTIONS R. 9 W.

COLLECT 75¢ PER FRT. FT. - ALSO REIMBURSEMENT CHARGE CALL MAIN OFFICE (ARROWAY AVE)

COLLECT 75¢ PER FRT. FT.

NO. 21041
 M.B. 559-57159