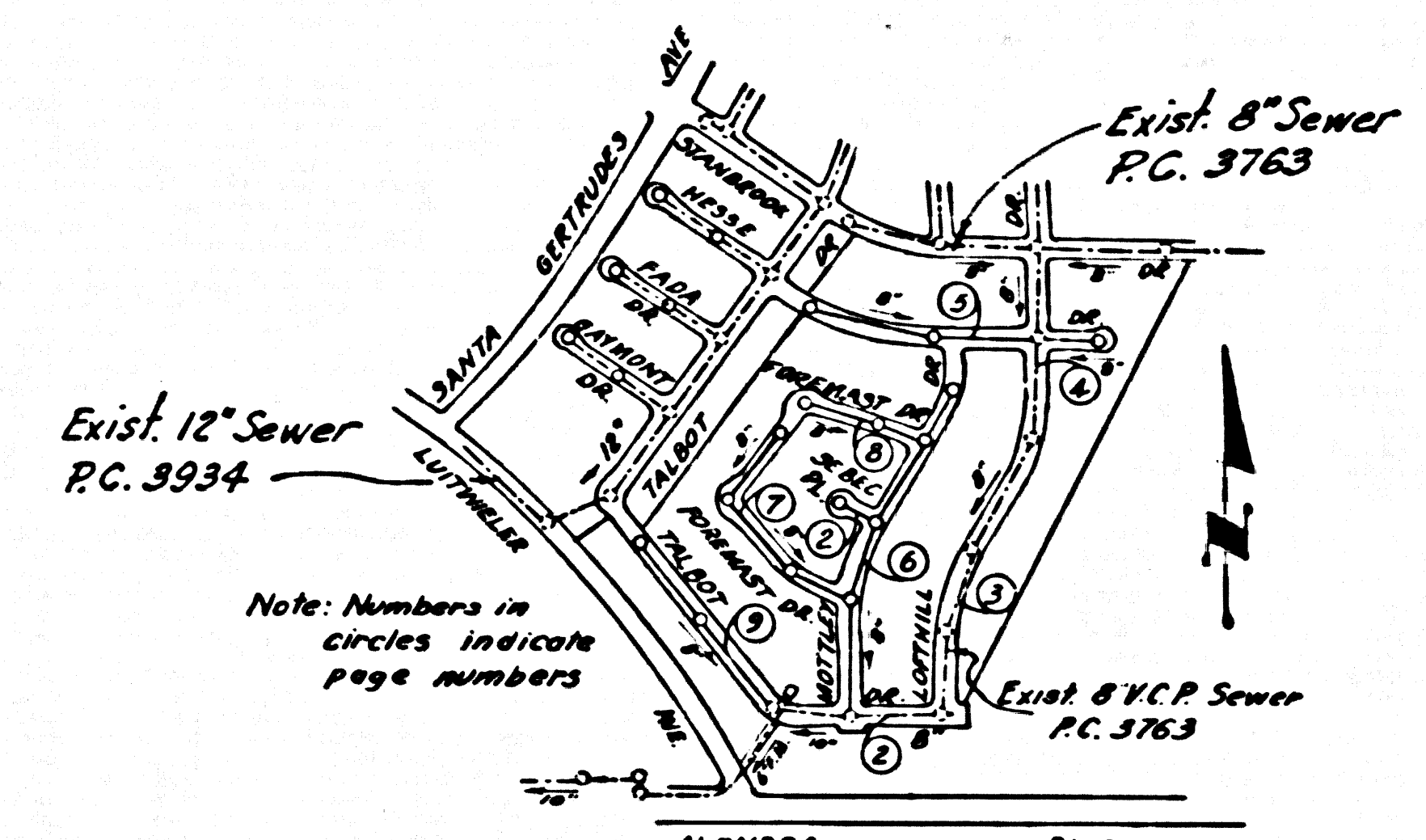


**BENCH MARK:**  
 Stage Rd. & Luitwiler Ave. A Standard County Surveyors monument marked  $5\frac{1}{2}$  feet in concrete 16" below the surface approximately on the center line of Luitwiler Ave. and about 72' N of the center line of Stage Rd. in a well cut in the pavement and protected by a cast iron cover marked County Surveyors Monument Co. Surv. F.B. 120A-6 1952 Adj. Elev. = 109.862



INDEX MAP  
 TRACT No 23311  
 P.C. 4383  
 SCALE 1"=600'

SHEETS	PAGES
5	9

**NOTE:**  
 CONTRACTOR TO OBTAIN EXISTING WYE STATIONS FROM NORWALK BLDG. OFFICE AT TIME OF CONSTRUCTION.

**NOTE:**  
 LOTS 1-7 INCL. AND 11A-11B INCL. ARE SERVED BY HOUSE LATERALS CONSTRUCTED IN STANBROOK DR. UNDER P.C. 3763.

**NORWALK BLDG. DIST. NO. 42**

- NOTES:**
- PROVIDE STAKES ON THE PROPERTY LINE OR PROPERTY LINES PRODUCED AT RIGHT ANGLES TO THE SEWER LINE AT THE CENTER LINE OF EACH MANHOLE.
  - NO REPRESENTATIVE OF THE COUNTY ENGINEER WILL SURVEY OR LAYOUT ANY PORTION OF THE WORK.
  - THE OWNER OR HIS AUTHORIZED REPRESENTATIVE SHALL FURNISH THE COUNTY ENGINEER WITH GRADE SHEETS AND STATION FOR ALL HOUSE LATERALS AND BRANCHES AND SHALL "VIEW" STAKES FOR THEM AT THEIR PROPER LOCATIONS WITH STATIONING PLAINLY MARKED. ANY CHANGE IN LOCATION SHALL BE REQUESTED IN WRITING BY THE OWNER OR HIS REPRESENTATIVE. NO REVISIONS SHALL BE MADE IN THESE PLANS WITHOUT THE APPROVAL OF THE COUNTY ENGINEER.
  - USE STANDARD MANHOLE FRAMES AND COVERS, S.A. 117, EXCEPT AS NOTED.
  - USE STANDARD STRENGTH PIPE EXCEPT AS NOTED.
  - USE CEMENT MORTAR FOR ALL WITHIN CLAY PIPE JOINTS.
  - RESURFACE ALL TRENCH WITHIN PAVED AREA TO MEET L. & COUNTY ROAD DEPT. OR CALIF. STATE HIGHWAY DEPT. REQUIREMENTS IN ACCORDANCE WITH PERMITS.
  - ENCASE FOUR FEET OF SEWER AT POINTS OF INTERFERENCE WITH POLES, S.A. 119.
  - HOUSE LATERALS TO BE CONSTRUCTED WITH INVERTS AT PROPERTY LINE  $6\frac{1}{2}$  FEET BELOW CURB GRADE EXCEPT AS NOTED.
  - ALL STRUCTURES SHALL BE BRICK SEWER STRUCTURES, S.A. 104, EXCEPT AS NOTED.
  - FOR ALLOWABLE LEAKAGE TEST USE FORMULA NO. 1, S.P.C.E., M.C. 56.
  - MANHOLE TOPS IN UNIMPROVED HEIGHTS OF WAY TO BE 6" ABOVE FINISHED GRADE.
  - THE PRIVATE ENGINEER IS TO FURNISH THE HOUSE LATERAL DEPTH AT THE PROPERTY LINE BELOW THE TOP OF CURB ELEVATION FOR EACH HOUSE LATERAL ON THE GRADE SHEET.
  - THE CONTRACTOR SHALL SATISFY HIMSELF OF ALL SUBSTRUCTURES AND SHALL BE RESPONSIBLE FOR THEIR LOCATION.

DOUBLE SCALE

**NO CHARGE FOR CONNECTIONS**  
 77, 79, 80, 81, 82, 83, 84, 85

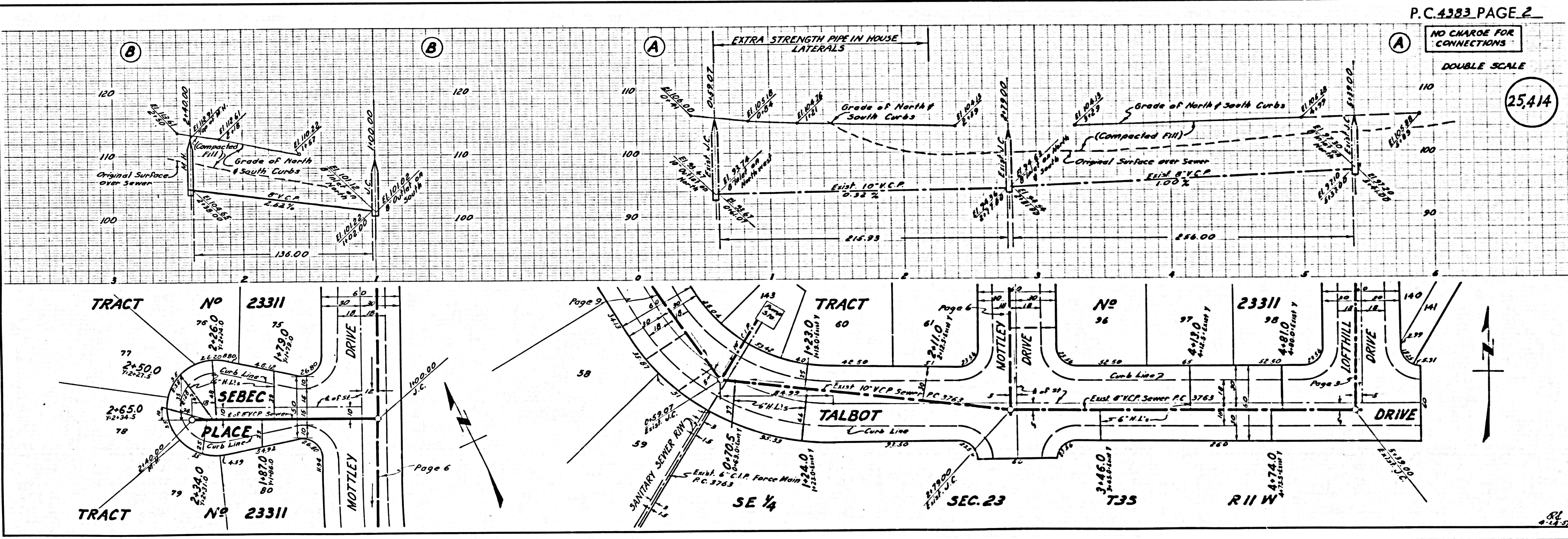
**NOTE:**  
 THE CONTRACTOR SHALL NOTIFY THE CONSTRUCTION AND STORM DRAIN DIVISION BY TELEPHONE, MADISON 9-4747, EXT. 362, AT LEAST 24 HOURS BEFORE STARTING ANY WORK UNDER THIS CONTRACT.

PROFILE ALIGNMENT AND GRADE OF **P.C. 4383**  
**SANITARY SEWERS** PAGE 1  
 TO BE CONSTRUCTED IN  
**TRACT No 23311** (25,413)

**PRIVATE CONTRACT NO. 4383**  
 W.S. 34  
 5 SHEETS; 9 PAGES  
 SCALE: 1"=10' HORIZ. 1"=5' VERT.  
 FEB. 1, 1957  
 PREPARED IN THE OFFICES OF  
**MCINTIRE & QUIROS INC.**  
 BY Alan Murray 4/23/57  
 REG. E. NO. 3542  
 FOR LEGEND SEE PLAN NO. S.A. 64

**NOTE:**  
 GRADIES TO WHICH THIS IMPROVEMENT IS TO BE CONSTRUCTED ARE SHOWN ON PLANS AND PROFILES GRADE POINTS FOR TOP OF CURB, CENTER LINE OF STREETS, OR CENTER LINE OF ALLEYS ARE SHOWN BY CIRCLES ON PROFILES. AT ALL POINTS BETWEEN DESIGNATED POINTS THE GRADE SHALL BE ESTABLISHED SO AS TO CONFORM TO A STRAIGHT LINE DRAWN BETWEEN SAID DESIGNATED POINTS.  
 ELEVATIONS ARE IN FEET ABOVE M.S.C. & SEA LEVEL DATUM OF 1929.  
 THIS DRAWING AND THE DATA HEREON ARE HEREBY MADE A PART OF THE SPECIFICATIONS.  
 WORK SHALL BE CONSTRUCTED ACCORDING TO SPECIFICATIONS ON FILE IN THE OFFICE OF THE COUNTY ENGINEER AND SHALL BE PROSECUTED ONLY IN THE PRESENCE OF THE COUNTY ENGINEER.  
 BEFORE WORK CAN BE STARTED, THE CONTRACTOR MUST OBTAIN A PERMIT TO EXCAVATE IN COUNTY STREETS FROM THE L. & COUNTY ROAD DEPT. THE \$100.00 FEE AND MAKE A DEPOSIT WITH THE COUNTY ENGINEER, ROOM 324 FARM AMERICAN BUILDING, 333 SO BROADWAY SUFFICIENT TO COVER THE COST OF CONSTRUCTION INSPECTION AND RECORD PLANS.  
 APPROVAL OF THIS PLAN BY THE COUNTY OF LOS ANGELES DOES NOT CONSTITUTE A REPRESENTATION AS TO THE ACCURACY OF THE LOCATION OR OF THE EXISTENCE OR NON-EXISTENCE OF ANY UNDERGROUND UTILITY PIPE, OR STRUCTURE WITHIN THE LIMITS OF THIS PROJECT. THIS NOTE APPLIES TO ALL PAGES.  
 IF WORK IS TO BE DONE IN A STATE HIGHWAY, A PERMIT MUST BE OBTAINED FROM THE STATE OF CALIFORNIA, DIVISION OF HIGHWAYS, 128 SOUTH SPRING STREET.

COUNTY OF LOS ANGELES, CALIFORNIA  
 APPROVED, JOHN A. LAMBE, COUNTY ENGINEER  
 APPROVED, A. M. RAWNH, CHIEF ENGINEER  
 BY C. J. Hushner SANITATION ENGINEER  
 BY E. J. Robinson OFFICE ENGINEER  
 CHECKED BY Carl H. Pearson 4/11/57  
 OFFICE OF COUNTY ENGINEER, REG. C. E. NO. 16,633



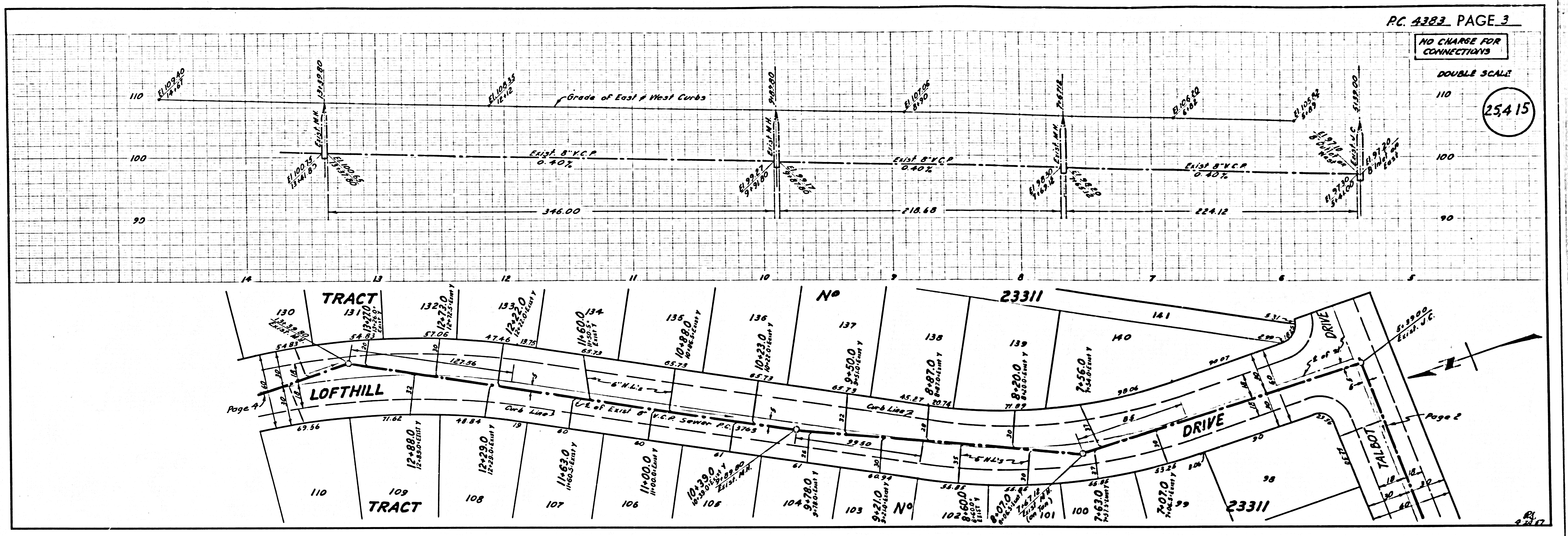
P.C. 4383 PAGE 2  
**NO CHARGE FOR CONNECTIONS**  
 DOUBLE SCALE  
 (25,414)

P.C. 4383  
 1

NO CHARGE FOR CONNECTIONS

DOUBLE SCALE

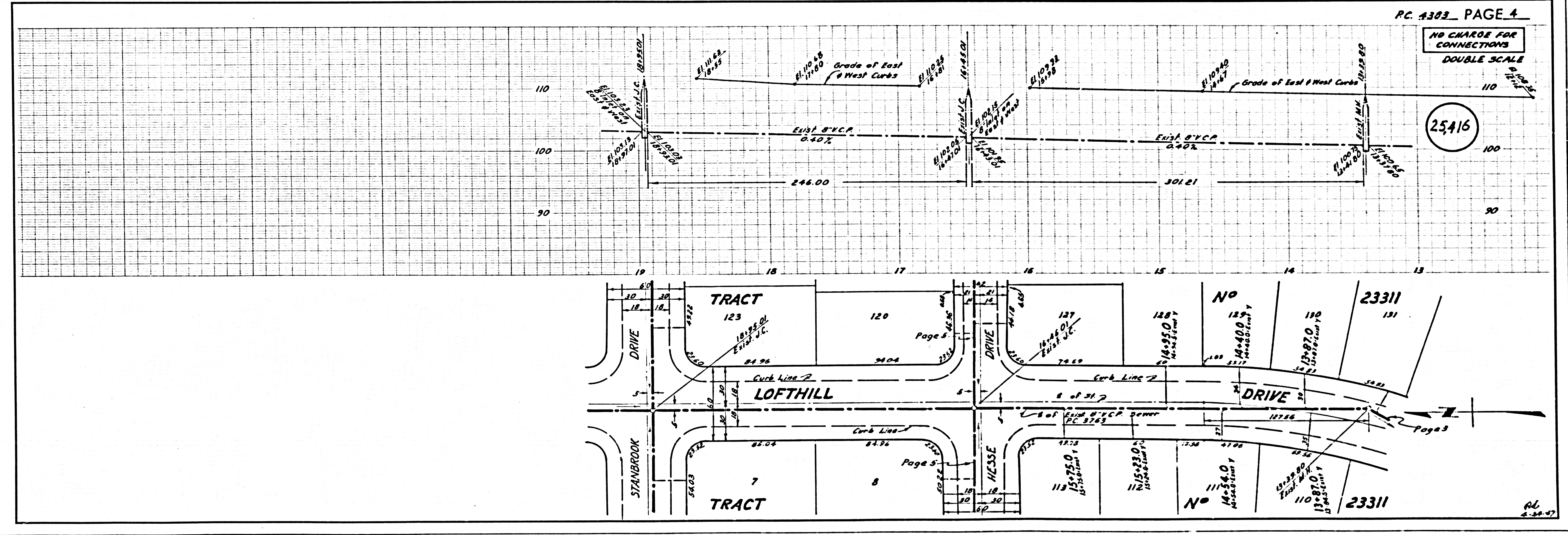
25415



NO CHARGE FOR CONNECTIONS

DOUBLE SCALE

25416

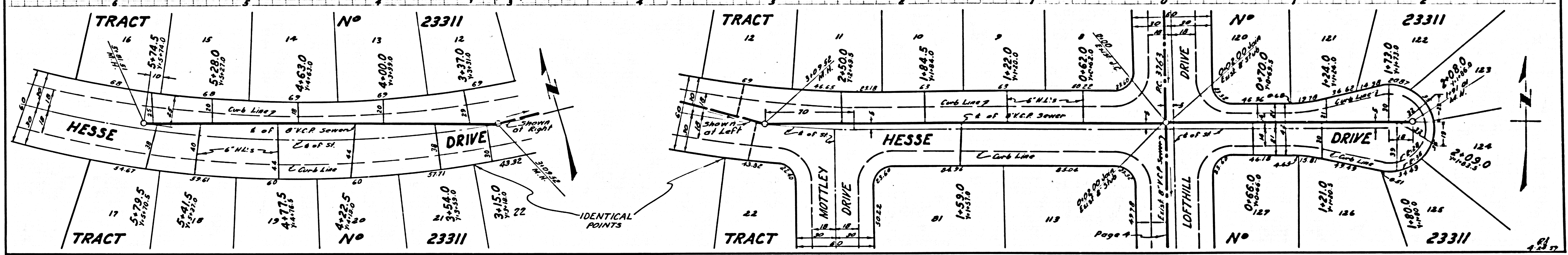
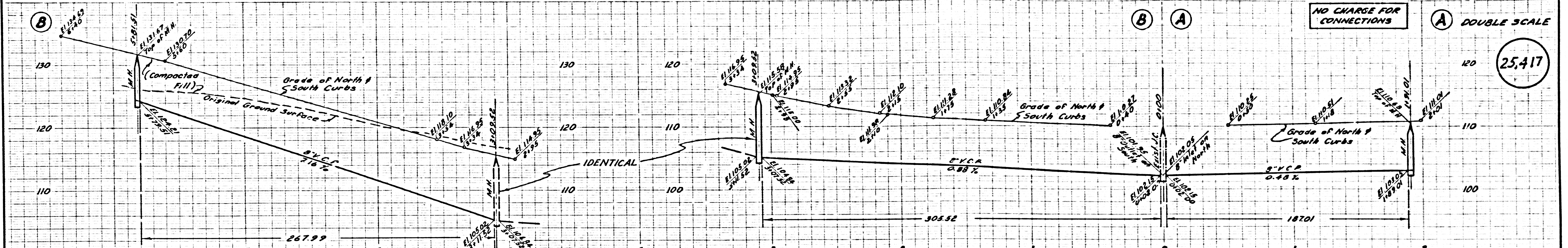


25416

NO CHARGE FOR CONNECTIONS

DOUBLE SCALE

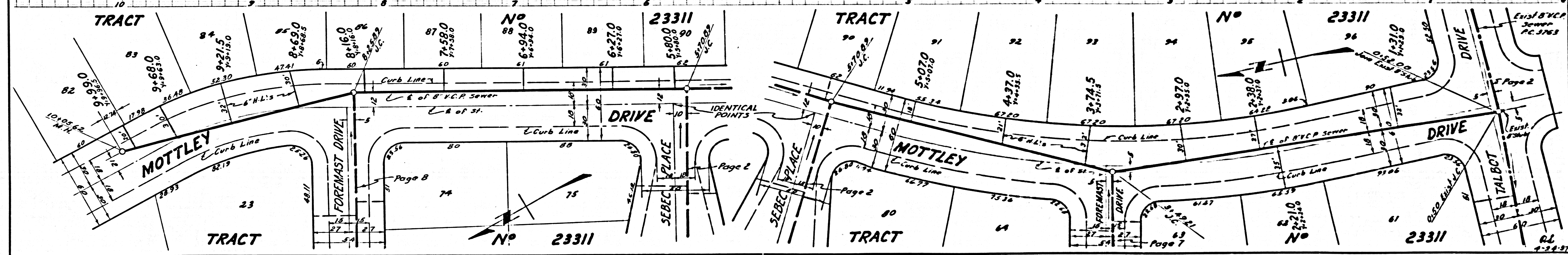
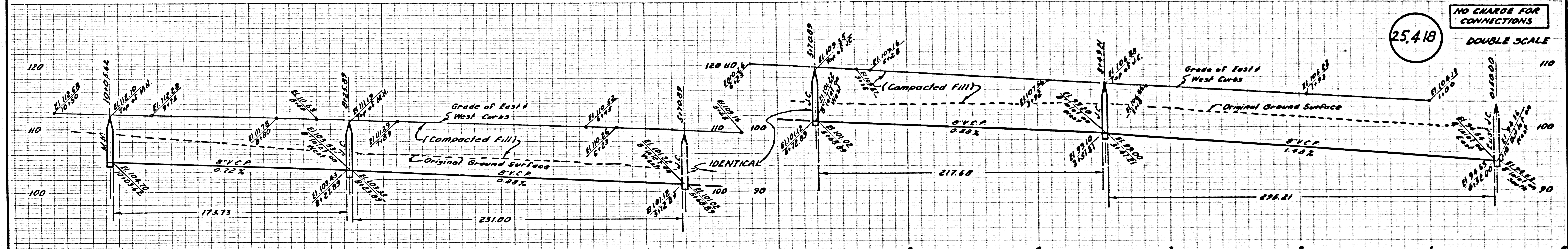
25,417



NO CHARGE FOR CONNECTIONS

DOUBLE SCALE

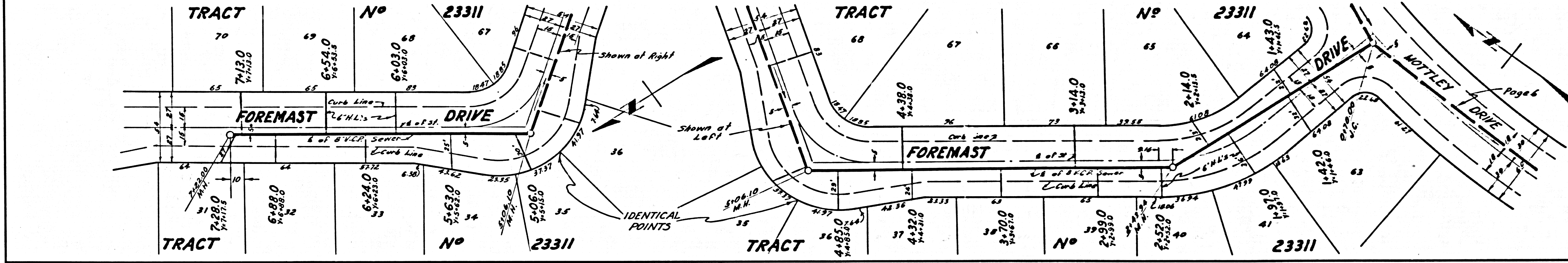
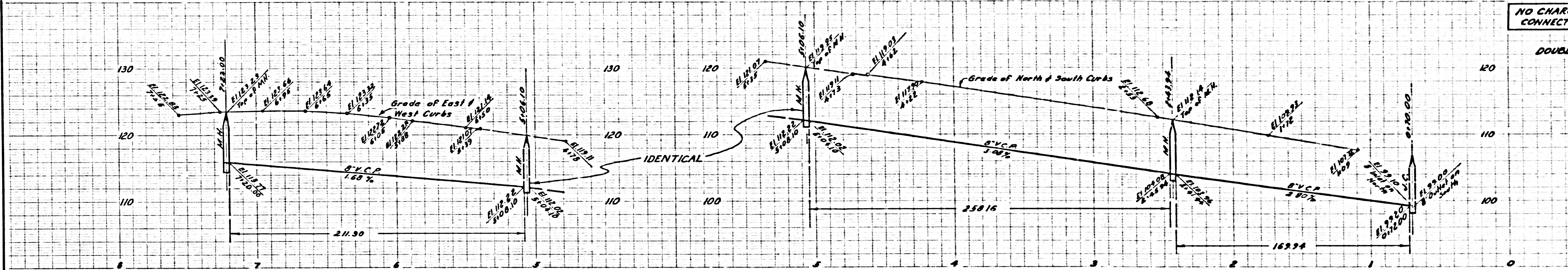
25,418



NO CHARGE FOR CONNECTIONS

DOUBLE SCALE

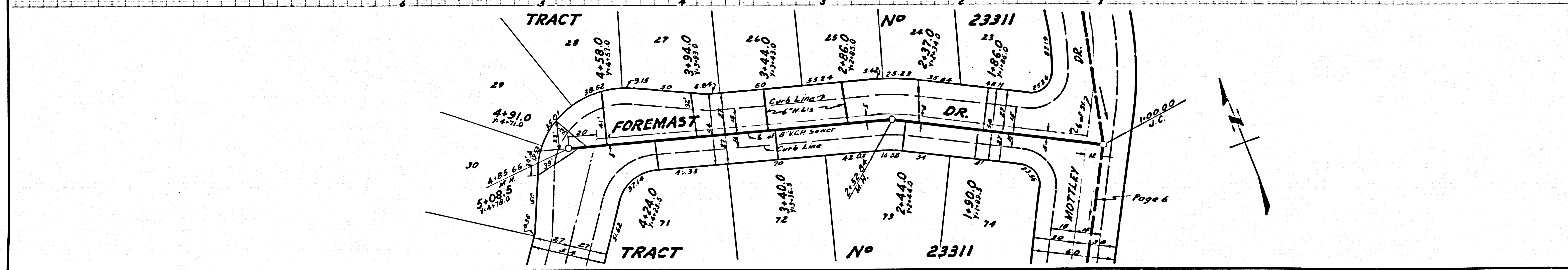
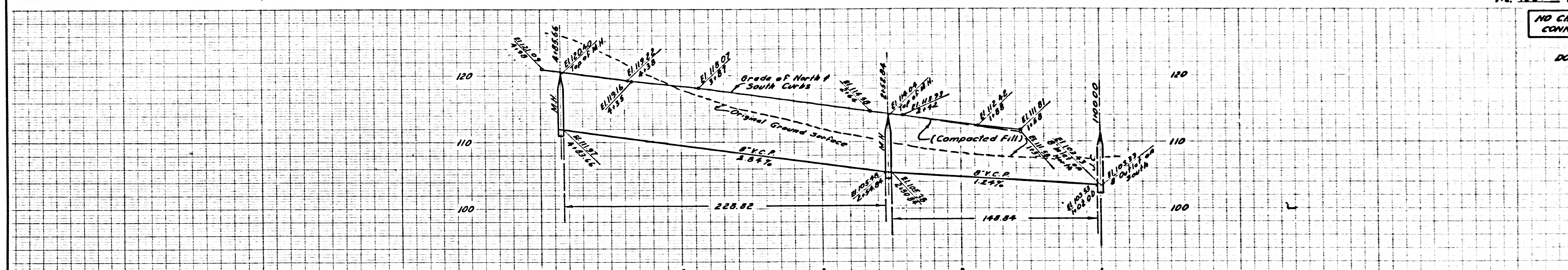
25.4 19



NO CHARGE FOR CONNECTIONS

DOUBLE SCALE

25.420



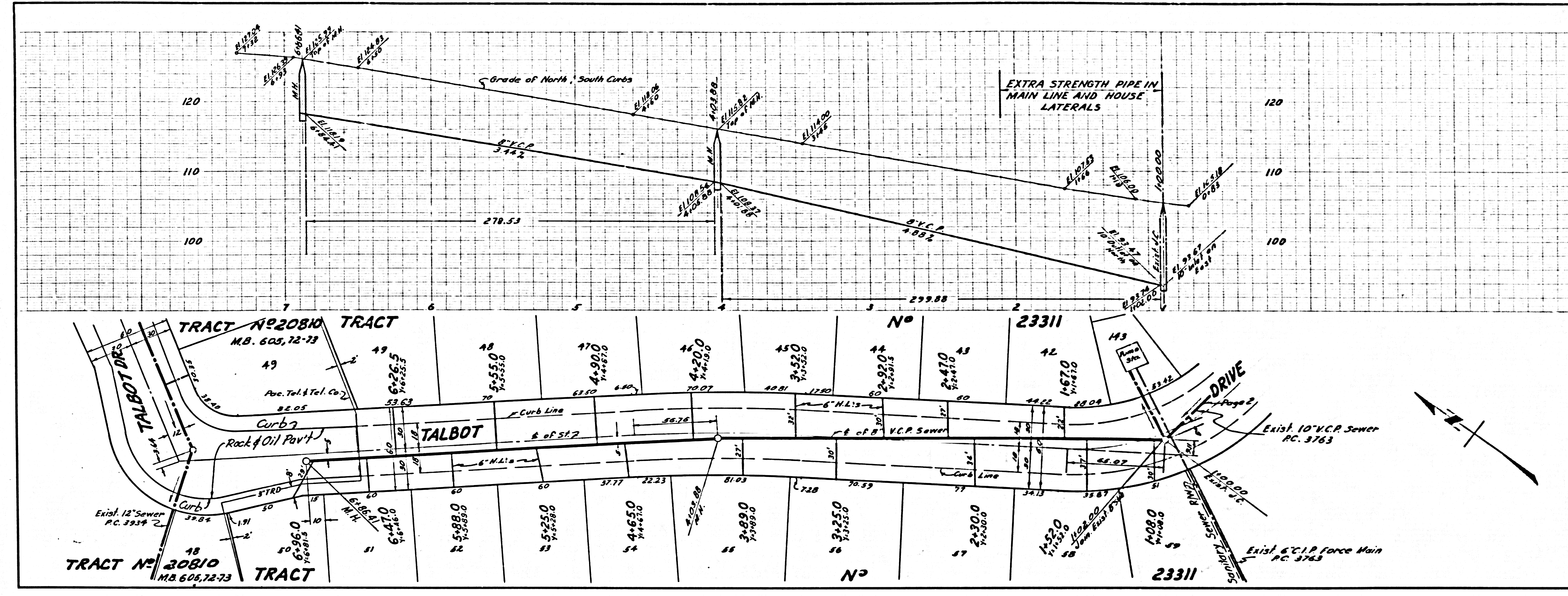
PC 4383

AL 4-29-57

NO CHARGE FOR CONNECTIONS

DOUBLE SCALE

25,421



U.S.G. 100 00. C-1. BLUE PRINT SHEET NO. 2