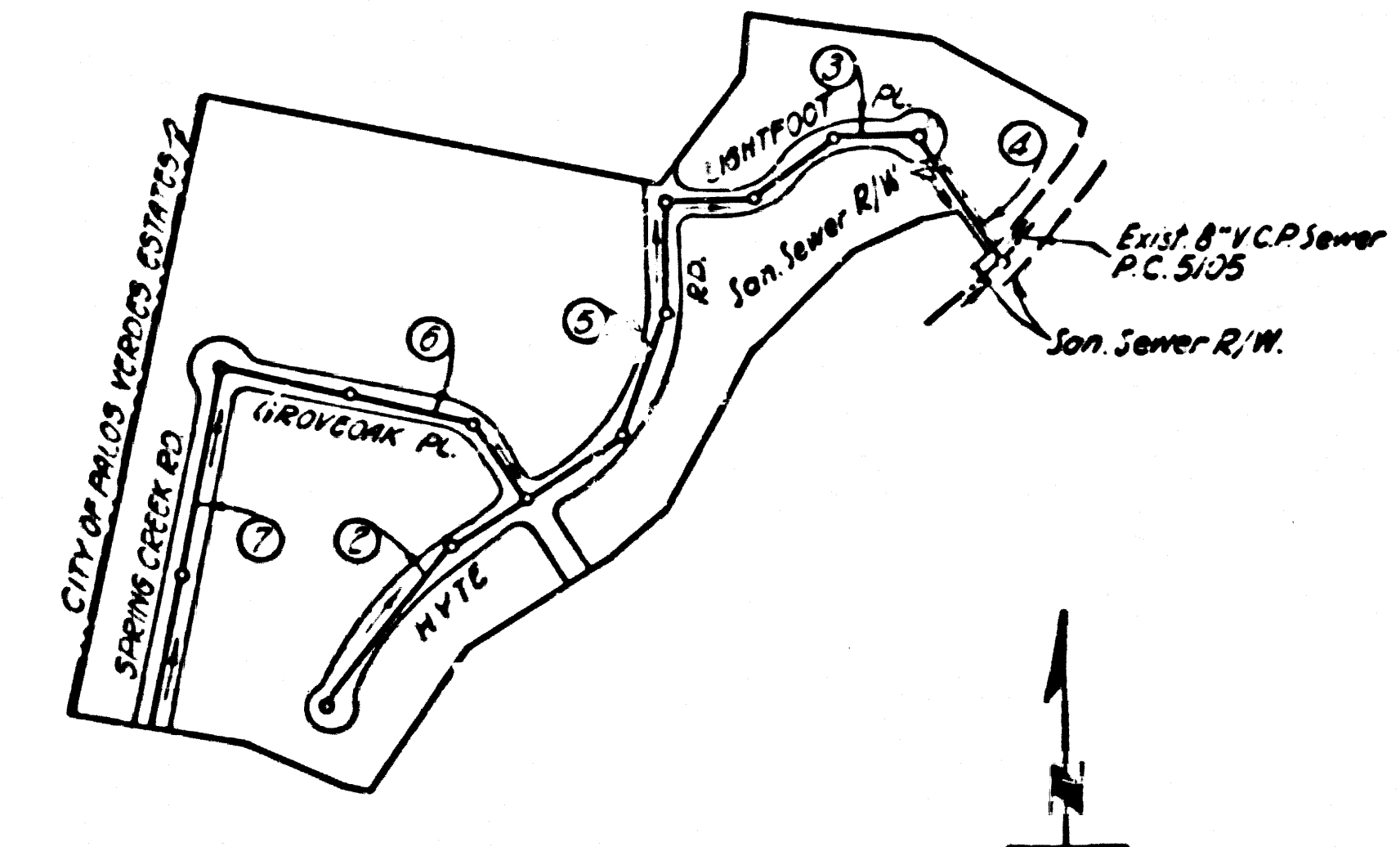


BENCH MARK
 County Surveyor B.M. U.S.C.G.S. 514
 Disk Stamped 0-796-1946, Set flush
 with ground 45' North of E of
 70th Avenue Drive North and 474'
 East of E of No-buane Ave.
 Elev. 355.518

NOTE:
 County Surveyor B.M. 36-2 County Precise
 Survey 1953 Adj. Elev. 355.58
 Add 0.065' to all elevations shown hereon
 to agree with 1953 adjustment.



INDEX MAP
 TRACT No. 21354
 SCALE: 1"=400'
 P.C. 4388

ISSUE NO PERMITS PRIOR TO RECORDATION OF TR. No. 24423

NO CHARGE FOR CONNECTIONS
 W. T. WALKER 8-1-58

LOMITA BLDG. DIST. NO. 71

PROFILE ALIGNMENT AND GRADE OF **P.C. 4388**
SANITARY SEWERS PAGE **1**
 TO BE CONSTRUCTED IN
TRACT No. 21354

PRIVATE CONTRACT NO. 4388

W.S. 27
 4 SHEETS, 7 PAGES

SCALE: HORIZ. 1"=80' VERT. 1"=8'
 APRIL, 1958

PREPARED IN THE OFFICE OF
ENGINEERING SERVICE CORPORATION

By: *E. F. Young*
 REG. C. E. NO. 3822

FOR LEGEND SEE PLAN NO. S-A-64

28,362

- NOTES:**
- PROVIDE STAKES ON THE PROPERTY LINE OR PROPERTY LINE PROBABLY AT RIGHT ANGLES TO THE SEWER LINE AT THE CENTER LINE OF EACH MANHOLE.
 - NO REPRESENTATIVE OF THE COUNTY ENGINEER SHALL SURVEY OR LAYOUT ANY PORTION OF THE WORK.
 - THE OWNER OR HIS AUTHORIZED REPRESENTATIVE SHALL FURNISH THE COUNTY ENGINEER WITH GRADY SHEETS AND STATION FOR ALL HOUSE LATERALS AND T BRANCHES AND SHALL PROVIDE STAKES FOR THEM AT THESE PROPER LOCATIONS WITH STATIONING AND PLANNED MARKERS. ANY CHANGE IN LOCATION SHALL BE REQUESTED IN WRITING BY THE OWNER OR HIS REPRESENTATIVE.
 - NO REVISIONS SHALL BE MADE IN THESE PLANS WITHOUT THE APPROVAL OF THE COUNTY ENGINEER.
 - USE STANDARD MANHOLE FRAMES AND COVERS, S.A-117, EXCEPT AS NOTED.
 - USE STANDARD STEPMOSTS PIPE EXCEPT AS NOTED.
 - USE COUNTY SPECIFICATIONS FOR "SPECIAL" OR "SPECIAL SEAL" FOR ALL VITRIFIED CLAY PIPE JOINTS PER SPEC'S, PAGE 364-65.
 - MANHOLES AND BRANCHES WITHIN PAVED AREAS TO MEET L.A. COUNTY ROAD DEPT. OR CALIF. STATE HIGHWAY DEPT. REQUIREMENTS IN ALL RESPECTS WITH FRAMING.
 - IN CASE POLLS FEET OF SEWER AT POINTS OF INTERFERENCE WITH POLES, 8'-0" V.C. CASE IS.
 - HOUSE LATERALS TO BE CONSTRUCTED WITH INVERTS AT PROPERTY LINE 6" FEET BELOW CURB GRADY EXCEPT AS NOTED.
 - ALL STRUCTURES SHALL BE BRICK SEWER STRUCTURES, S.A-194, EXCEPT AS NOTED.
 - FOR ALLOWABLE HEAD-ON TEST USE FORMULA NO. 1000, SPEC. SEC. 88.
 - MANHOLE TOPS IN UNPAVED SPACES MAY BE 4" ABOVE FINISHED GRADE.
 - THE PRIVATE ENGINEER IS TO FURNISH THE HOUSE LATERAL DEPTH AT 1" PROPERTY LINE BELOW THE TOP OF CURVE ELEVATION FOR EACH HOUSE LATERAL ON THE GRADE SHEET.
 - THE CONTRACTOR SHALL INVEY THE CONSTRUCTION AND FROM BEAM BY 1" BY TELEPHONE, STANDARD 9-07, EXT. 362, AT LEAST 24 HOURS BEFORE STARTING ANY WORK UNDER THE CONTRACT.
 - STANDARD SPECIFICATIONS DATED MAY 16 1957 APPLY TO THE CONSTRUCTION OF THIS PROJECT.

ENGINEERING SERVICE CORPORATION
 1127 W. WASHINGTON BLVD.
 LOS ANGELES 15, CALIF. R. 9-7281

REVISIONS		TRACED BY <i>EMR/BB</i>
		DES'G'D BY <i>EMR/BB</i>
		CK'D BY _____
		SUBMITTED _____
SUB STRUCTURES OK'D		
W. O. NO.	DWG. NO.	DATE
6681-24	-	APRIL, 1958 AS NOTED

NOTE:
 GRADES TO WHICH THIS IMPROVEMENT IS TO BE CONSTRUCTED ARE SHOWN ON PLANS AND PROFILES. GRADE POINTS FOR TOP OF CURB, CENTER LINE OF STREETS, OR CENTER LINE OF ALLEYS ARE SHOWN BY CIRCLES ON PROFILES. AT ALL POINTS BETWEEN DESIGNATED POINTS THE GRADE SHALL BE ESTABLISHED SO AS TO CONFORM TO A STRAIGHT LINE DRAWN BETWEEN SAID DESIGNATED POINTS.
 ELEVATIONS ARE IN FEET ABOVE U.S.C. & G.S. MEAN LEVEL, JANUARY 1, 1929.
 THIS DRAWING AND THE DATA HEREON ARE HEREBY MADE A PART OF THE SPECIFICATIONS FOR THE CONSTRUCTION OF THE SANITARY SEWER WORK TO BE CONSTRUCTED ACCORDING TO SPECIFICATIONS ON FILE IN THE OFFICE OF THE COUNTY ENGINEER AND SHALL BE PROSECUTED ONLY IN THE PRESENCE OF THE COUNTY ENGINEER. NO OTHER AMERICAN STANDARD SPECIFICATIONS SHALL BE USED WITHOUT THE WRITTEN APPROVAL OF THE COUNTY ENGINEER.
 APPROVAL OF THIS PLAN BY THE COUNTY OF LOS ANGELES DOES NOT CONSTITUTE A REPRESENTATION AS TO THE ACCURACY OF THE LOCATION OF OR THE EXISTENCE OF ANY UNDERGROUND UTILITY PIPE, OR STRUCTURE WITHIN THE LIMITS OF THIS PROJECT. THIS NOTE APPLIES TO ALL PAGES.
 IF WORK IS TO BE DONE IN A STATE HIGHWAY, A PERMIT MUST BE OBTAINED FROM THE STATE OF CALIFORNIA, DIVISION OF HIGHWAYS, 138 SOUTH SPRING STREET.

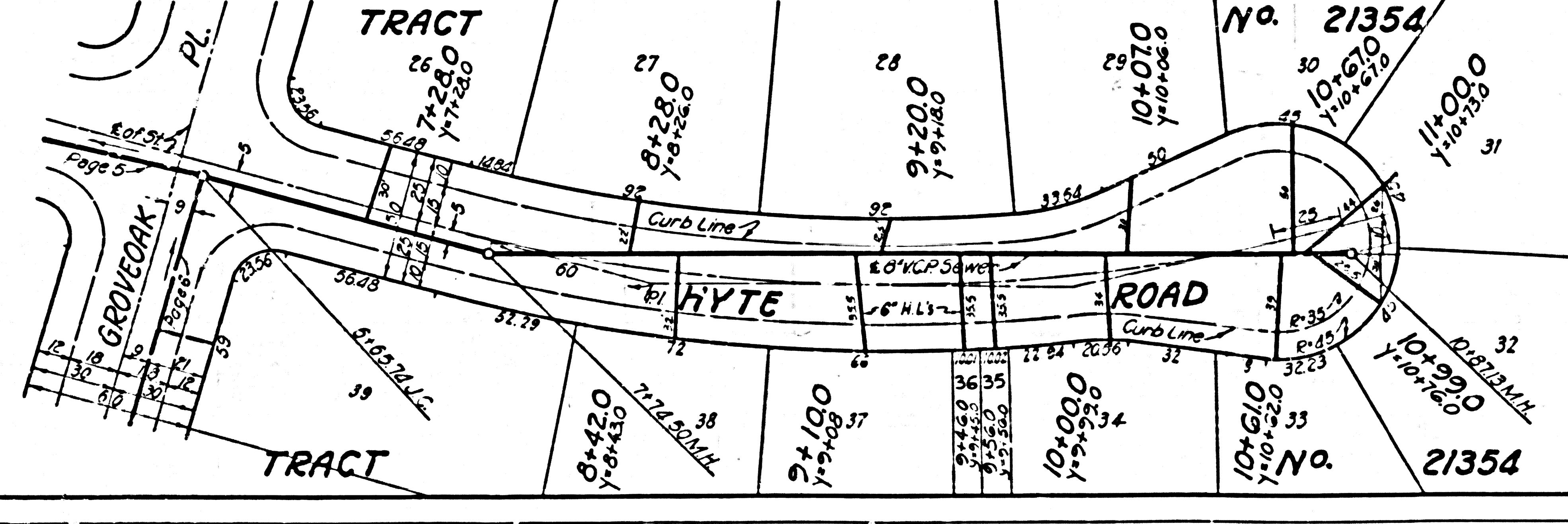
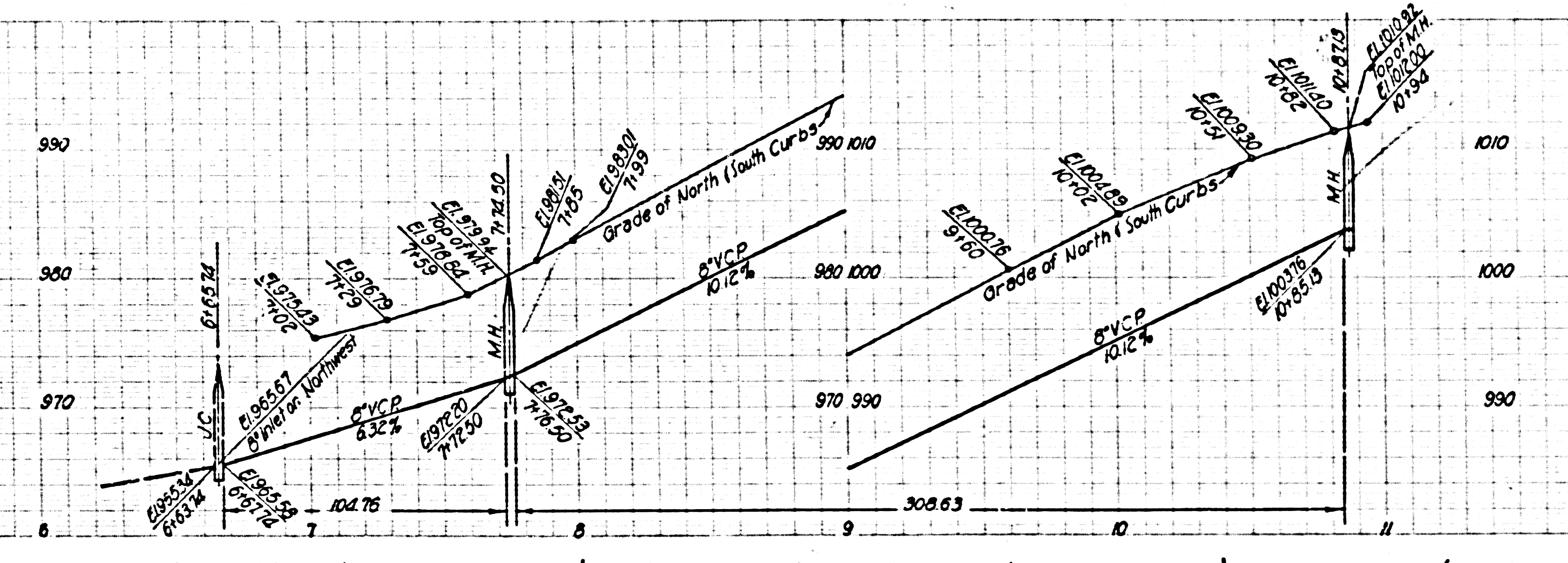
COUNTY OF LOS ANGELES, CALIFORNIA
 APPROVED, JOHN A. LAMBE, COUNTY ENGINEER
 APPROVED, C. R. COMPTON, CHIEF ENGINEER
 CO. SEAL NO. 5
 BY: *John A. Lambe* (Sanitation Engineer) BY: *C. R. Compton* (Chief Engineer)
 CHECKED BY: *Sk. Miller* (Sanitation Engineer)
 CIVIL ENGINEER, REG. C. E. NO. 9466

P.C. 4388 PAGE 2

DOUBLE SCALE

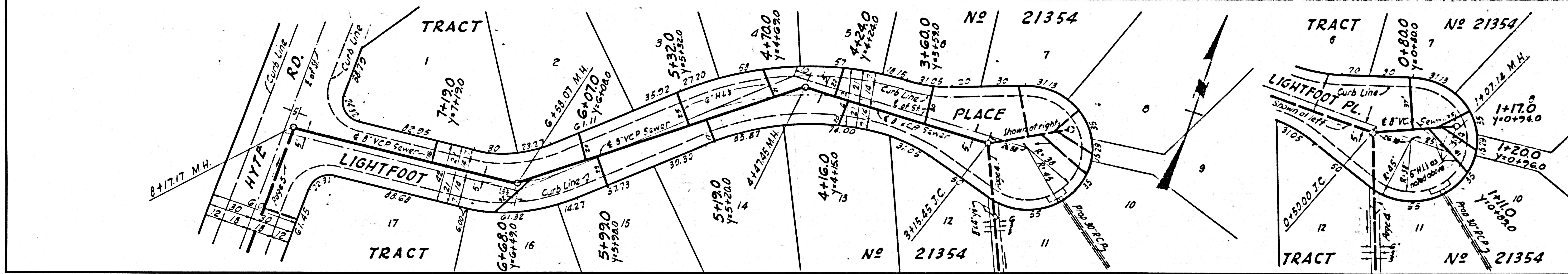
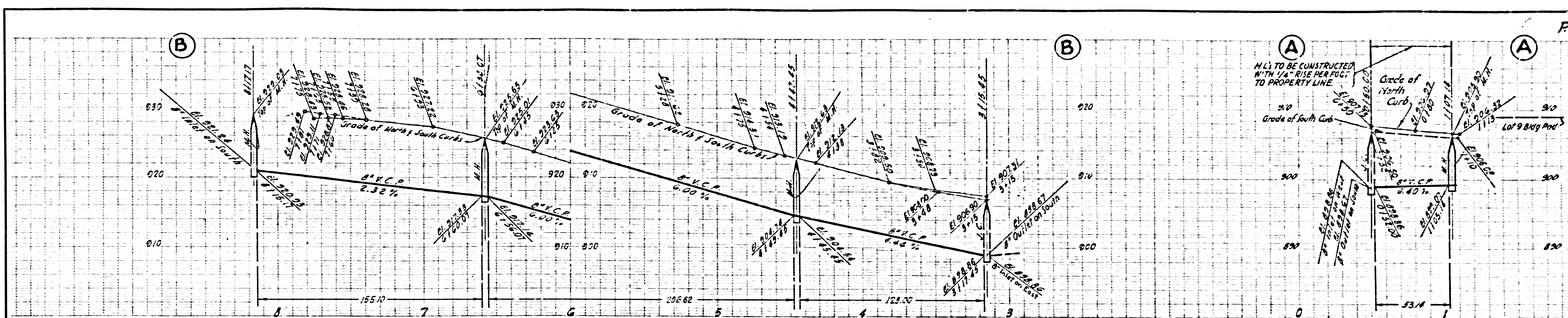
NO CHARGE FOR CONNECTIONS

28,363



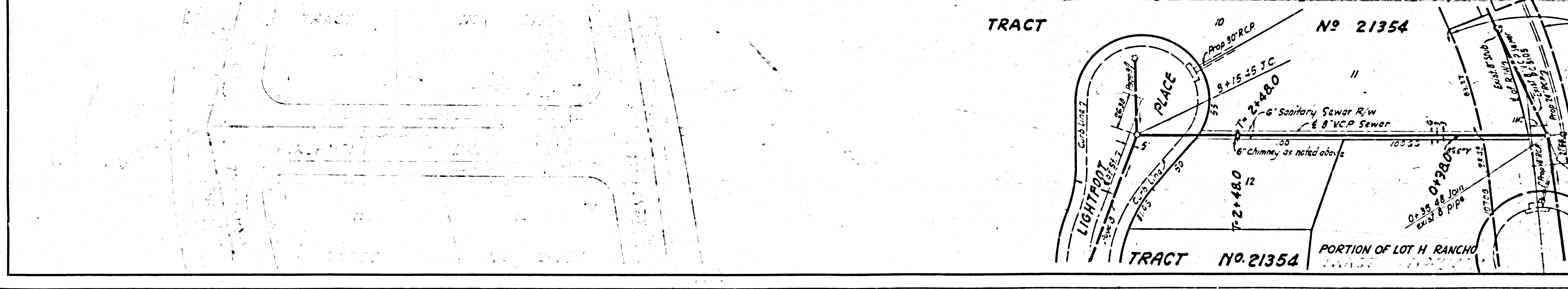
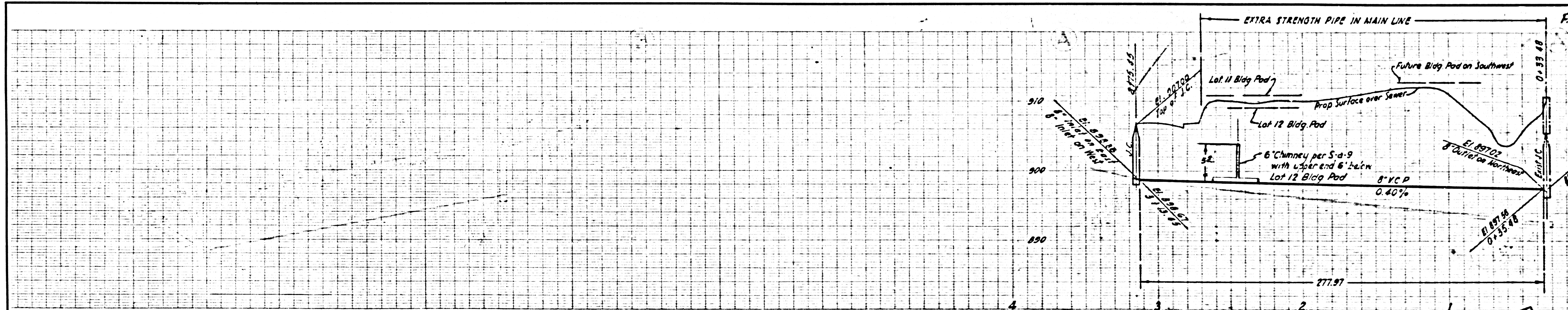
NO CHARGE FOR CONNECTIONS

28,366



NO CHARGE FOR CONNECTIONS

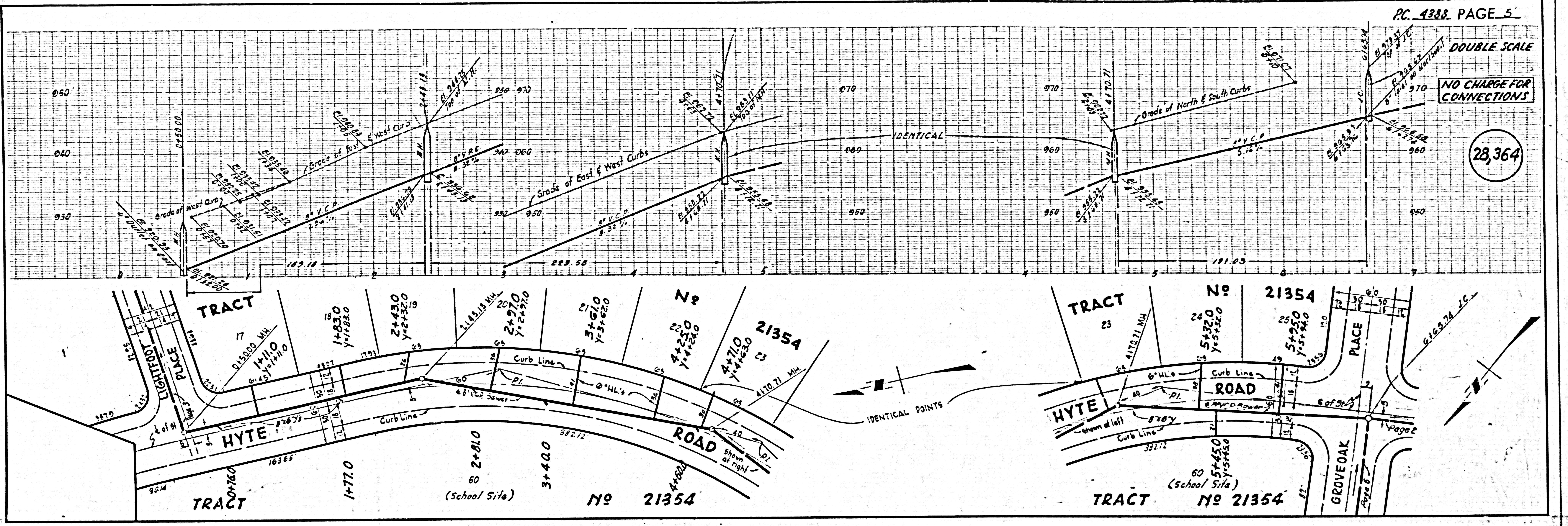
28,367



DOUBLE SCALE

NO CHARGE FOR CONNECTIONS

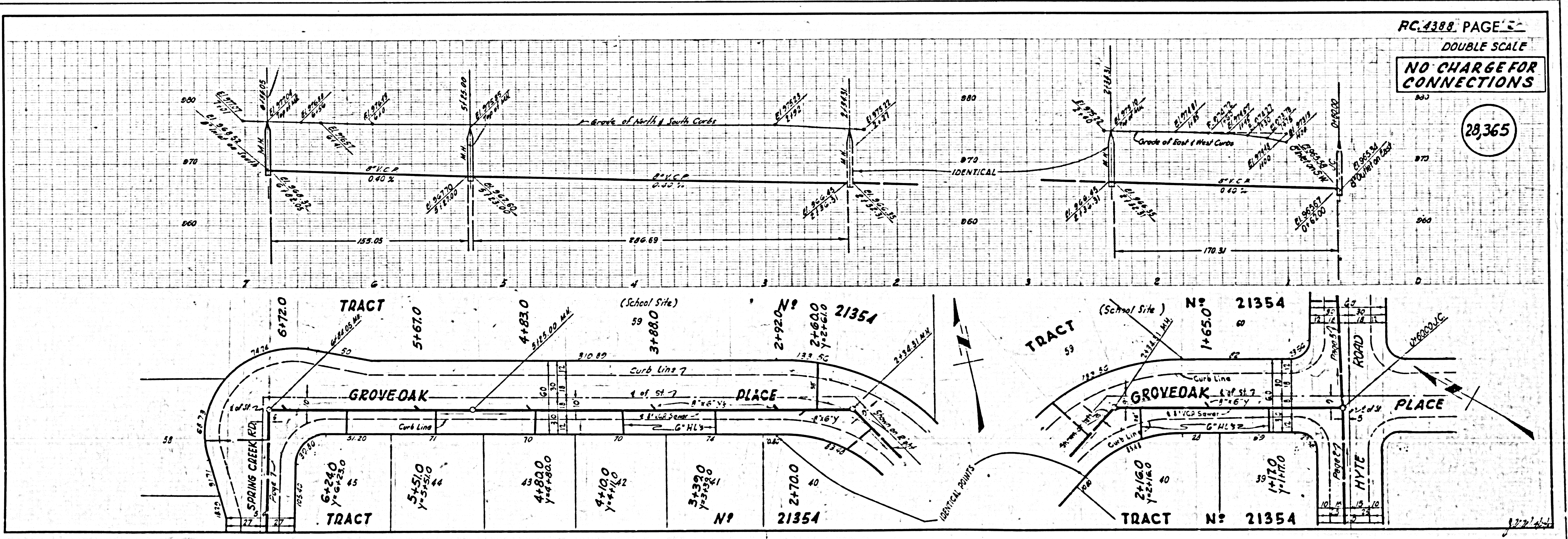
28,364



DOUBLE SCALE

NO CHARGE FOR CONNECTIONS

28,365



28,361

NO CHARGE FOR CONNECTIONS

