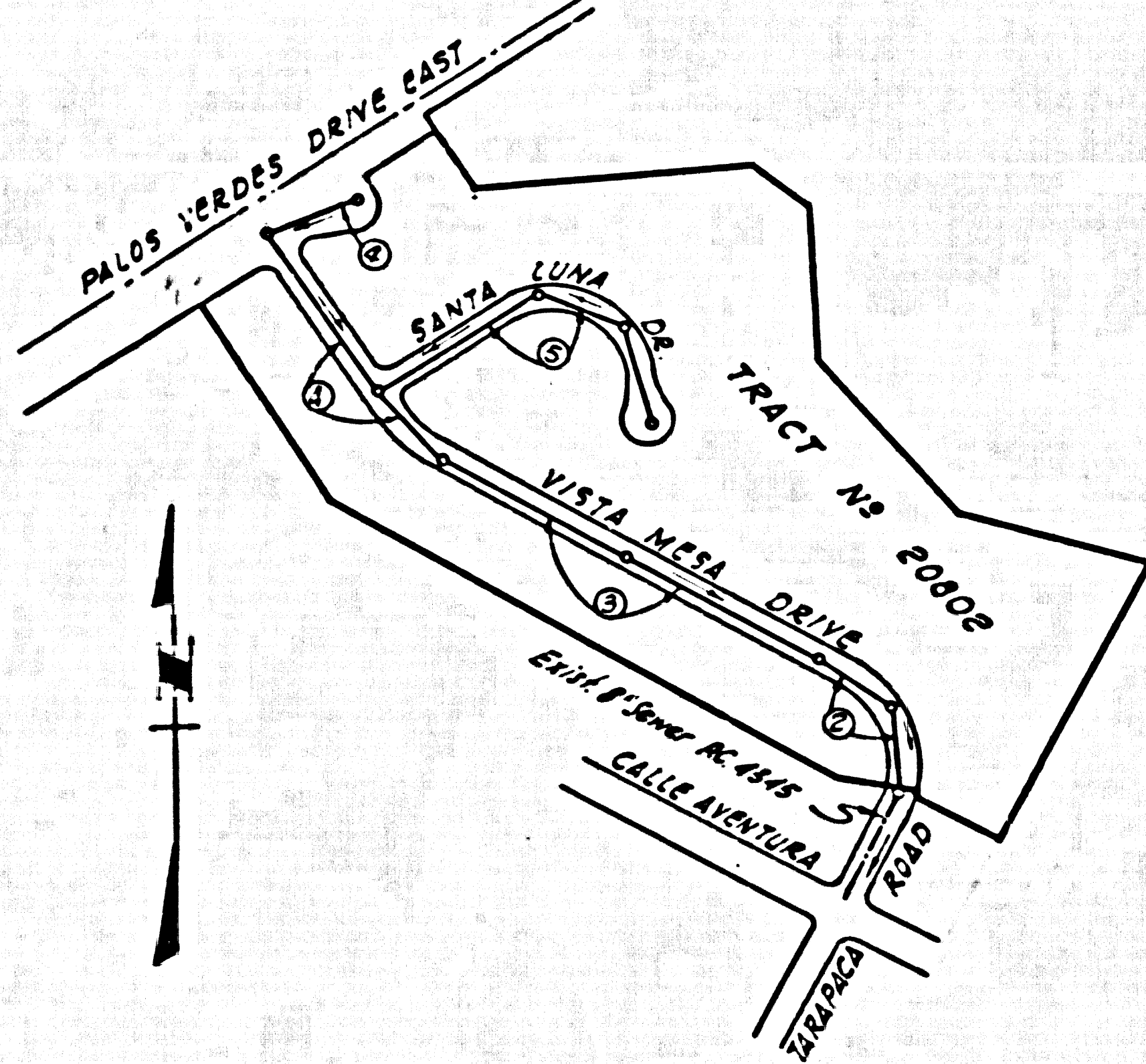


B.M. C.S.B.M. 36-8
 USC & GS N-103 (US 2576) Palos Verdes
 Dr East of Picardie Rd, 85' E of E of
 Palos Verdes Dr & 84' S of E of
 Picardie Rd Sid. disc stamped N-103-1033
 Set on top of Conc. Pav. 1953 Adj. Elev.
 160.753



INDEX MAP
 TRACT No 20802
 Scale: 1" = 300'
 P.C. 4394

NO CHARGE FOR
 CONNECTIONS
 L. Carter 6-25-57

LOMITA BLDG. DIST. NO. 7.1

- NOTES
- PROVIDE STAKES ON THE PROPERTY LINE OR PROPERTY LINES PRODUCED AT RIGHT ANGLES TO THE SEWER LINE AT THE CENTER LINE OF EACH MANHOLE.
 - NO REPRESENTATIVE OF THE COUNTY ENGINEER WILL SURVEY OR LAYOUT ANY PORTION OF THE WORK.
 - THE OWNER OR HIS AUTHORIZED REPRESENTATIVE SHALL FURNISH THE COUNTY ENGINEER WITH GRADE SHEETS AND STATIONING FOR ALL HOUSE LATERALS AND 7 1/2-INCHES AND SHALL PROVIDE STAKES FOR THEM AT THEIR PROPER LOCATIONS WITH STATIONING PLAINLY MARKED. ANY CHANGE IN LOCATION SHALL BE REQUESTED IN WRITING BY THE OWNER OR HIS REPRESENTATIVE.
 - NO REVISIONS SHALL BE MADE IN THESE PLANS WITHOUT THE APPROVAL OF THE COUNTY ENGINEER.
 - USE STANDARD MANHOLE FRAMES AND COVERS, S.A. 117, EXCEPT AS NOTED.
 - USE STANDARD STRENGTH PIPE EXCEPT AS NOTED.
 - USE CEMENT MORTAR FOR ALL VITRIFIED CLAY PIPE JOINTS.
 - RESURFACE ALL TRENCH WITHIN PAVED AREA TO MEET L. A. COUNTY ROAD DEPT. OR CALIF. STATE HIGHWAY DEPT. REQUIREMENTS IN ACCORDANCE WITH PERMITS.
 - ENCASE FOUR FEET OF SEWER AT POINTS OF INTERFERENCE WITH POLES, S.A. 119.
 - HOUSE LATERALS TO BE CONSTRUCTED WITH INVERTS AT PROPERTY LINE $\frac{1}{2}$ FEET BELOW CURB GRADE EXCEPT AS NOTED.
 - ALL STRUCTURES SHALL BE BRICK OR CONCRETE, S.A. 194, EXCEPT AS NOTED.
 - FOR ALLOWABLE LEAKAGE TEST USE FORMULA NO. 1, S.P.C.E. SEC. 84.
 - MANHOLE TOPS IN UNIMPROVED RIGHTS-OF-WAY TO BE 4" ABOVE FINISHED GRADE.
 - The Private Engineer is to furnish the House Lateral depth of property line below the top of curb elevation for each House Lateral on the Grid Sheet.
 - THE CONTRACTOR SHALL NOTIFY THE CONSTRUCTION AND STORM DRAIN DIVISION BY TELEPHONE NUMBER 34747 EXT. 362 AT LEAST 24 HOURS BEFORE STARTING ANY WORK UNDER THIS CONTRACT.

ENGINEERING SERVICE CORPORATION			
1127 W. WASHINGTON BLVD.			
LOS ANGELES 15, CALIF.		R. 9-7281	
REVISIONS			
		TRACED BY	J.D.
		DES'G'D BY	C.M.
		CK'D. BY	
		SUBMITTED	
SUB STRUCTURES OK'D			
W. O. NO.	DWS. NO.	DATE	SCALE
G401-89		FEB. 1957	AS SHOWN

PROFILE ALIGNMENT AND GRADE OF P.C. 4394
 SANITARY SEWERS PAGE 1

TRACT No 20802

PRIVATE CONTRACT NO. 4394

W.S. 27

5 SHEETS, 5 PAGES
 SCALE: VERT. 1" = 4' HORIZ. 1" = 20' April, 1957

PREPARED IN THE OFFICES OF
 ENGINEERING SERVICE CORPORATION

By L. Carter
 REG. C. E. NO. 3692

FOR LEGEND SEE PLAN NO. S-A-64

NOTES

GRADES TO WHICH THIS IMPROVEMENT IS TO BE CONSTRUCTED AND SHOWN ON PLANS AND PROFILES. GRADE POINTS FOR TOP OF CURBS, CENTER LINE OF STREETS, OR CENTER LINE OF ALLEYS ARE SHOWN BY CIRCLES ON PROFILES AT ALL POINTS BETWEEN DESIGNATED POINTS THE GRADE SHALL BE ESTABLISHED SO AS TO CONFORM TO A STRAIGHT LINE DRAWN BETWEEN SAID DESIGNATED POINTS.

ELEVATIONS ARE IN FEET ABOVE U.S.C. & G.S. MEAN DATUM OF 1929.

THIS DRAWING AND THE DATA HEREON ARE HEREBY MADE A PART OF THE SPECIFICATIONS.

WORK SHALL BE CONSTRUCTED ACCORDING TO SPECIFICATIONS ON FILE IN THE OFFICE OF THE COUNTY ENGINEER AND SHALL BE PROSECUTED ONLY IN THE PRESENCE OF THE COUNTY ENGINEER.

BEFORE WORK CAN BE STARTED, THE CONTRACTOR MUST OBTAIN A PERMIT TO EXCAVATE IN COUNTY STREETS FROM THE L. A. COUNTY ROAD DEPT., 158 1/2 S.W. 1ST ST. AND A REPORT WITH THE COUNTY ENGINEER, ROOM 304 SAN AMERICAN BUILDING, 218 SO. BROADWAY, SUFFICIENT TO COVER THE COST OF CONSTRUCTION INSPECTION AND ACCORD PLANS.

APPROVAL OF THIS PLAN BY THE COUNTY OF LOS ANGELES DOES NOT CONSTITUTE A REPRESENTATION AS TO THE ACCURACY OF THE LOCATION OF THE EXISTENCE OR NON-EXISTENCE OF ANY UNDERGROUND UTILITY PIPE, OR STRUCTURE WITHIN THE LIMITS OF THE PROJECT THIS NOTE APPLIES TO ALL PAGES.

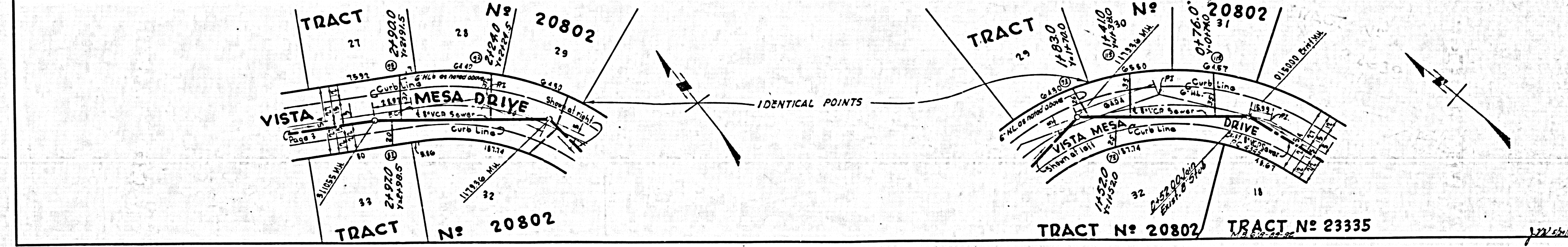
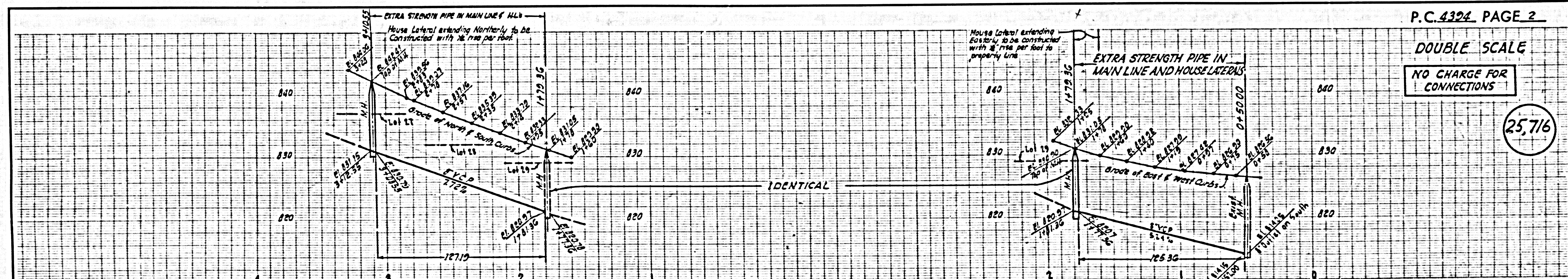
IF WORK IS TO BE DONE ON A STATE HIGHWAY, A PERMIT MUST BE OBTAINED FROM THE STATE OF CALIFORNIA, DIVISION OF HIGHWAYS, 128 SOUTH SPRING STREET.

COUNTY OF LOS ANGELES, CALIFORNIA

APPROVED, JOHN A. LAMBE, COUNTY ENGINEER APPROVED, A. M. BAWN, CHIEF ENGINEER

By L. Carter SANITATION ENGINEER By A. M. Bawn CHIEF ENGINEER

CHECKED BY L. Carter
 OFFICE OF COUNTY ENGINEER, REG. C. E. NO. 3692



P.C. 4394, PAGE 2

DOUBLE SCALE

NO CHARGE FOR CONNECTIONS

25,716

TRACT No 20802 TRACT No 23335

ENGINEERING SERVICE CORPORATION

