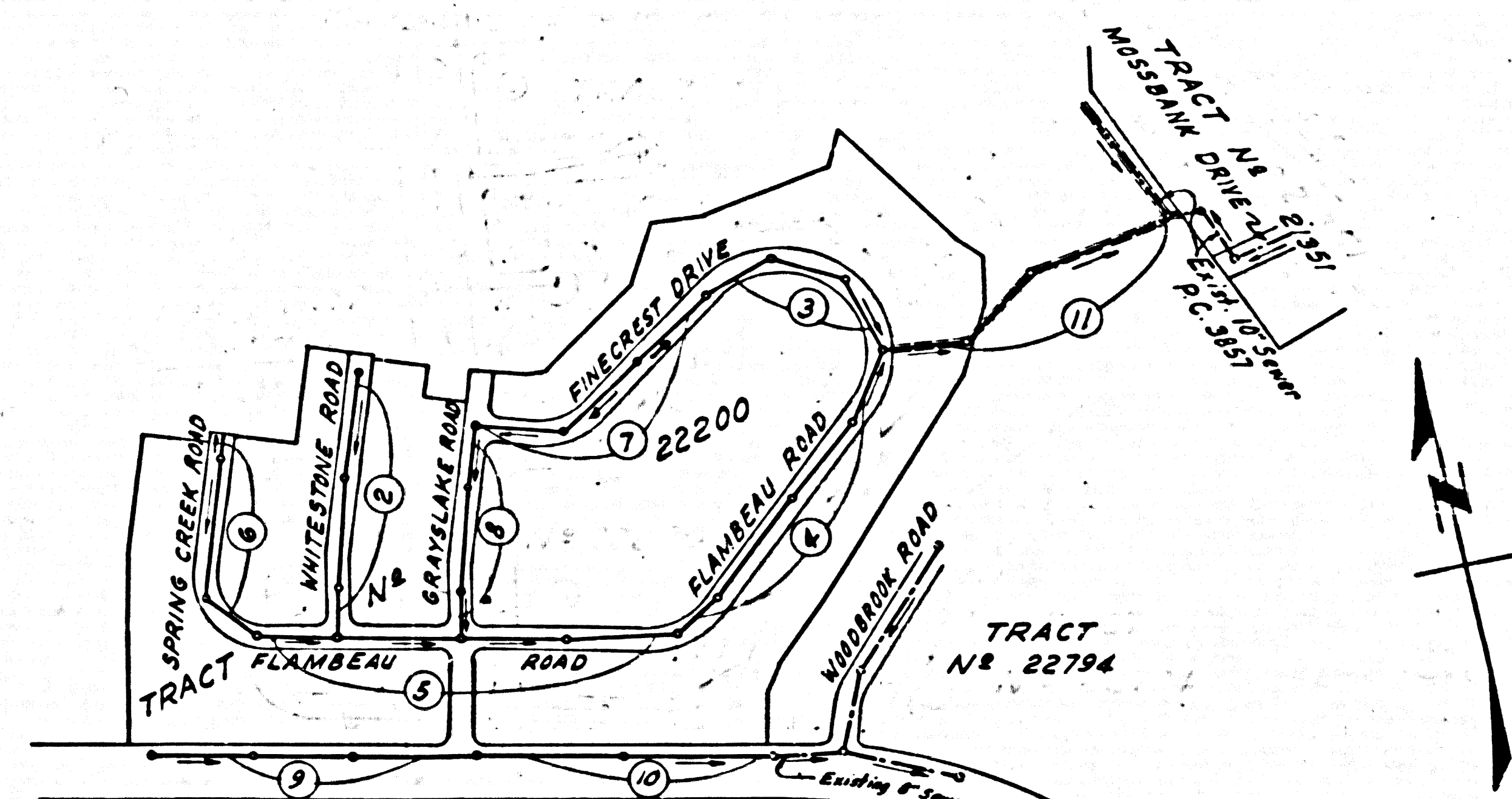


BENCH MARK
 County Surveyor B.M. 25 G.G.S. 314
 Date: 3/10/1946 G.M. 1246 341
 1246 with ground 45.11' of E
 of Oaks Verdes Drive North 41°
 East of E. of Normandie Ave.
 Elev. 355.818

NOTE:
 County Surveyor B.M. 36-2, County Precise
 Survey, 1953 Adj. Elev. 355.582.
 Add 0.065' to all elevations shown herein
 to agree with 1953 Adjustment.

NOTE:
 The Contractor shall notify the Construction and
 Storm Drain Division by telephone Madison 94747
 Ext. 362 at least 24 hours before starting any
 work under this contract.



INDEX MAP
TRACT NO. 22200
 SCALE 1"=400'
 P.C. 4395

NO CHARGE FOR CONNECTIONS
 L. Curtis 1-16-59

LOMITA BLDG. DIST. NO. 7.1

- NOTES:**
- PROVIDE STAKES ON THE PROPERTY LINE OR PROPERTY LINES PRODUCED AT RIGHT ANGLES TO THE SEWER LINE AT THE CENTER LINE OF EACH MANHOLE.
 - NO REPRESENTATIVE OF THE COUNTY ENGINEER WILL SURVEY OR LAYOUT ANY PORTION OF THE WORK.
 - THE OWNER OR HIS AUTHORIZED REPRESENTATIVE SHALL FURNISH THE COUNTY ENGINEER WITH READABLE SHEETS AND STATION FOR ALL HOUSE LATERALS AND T BRANCHES AND SHALL PROVIDE STAKES FOR THESE AT THEIR PROPER LOCATIONS WITH STATIONING PLAINLY MARKED. ANY CHANGE IN LOCATION SHALL BE REQUESTED BY WRITING BY THE OWNER OR HIS REPRESENTATIVE.
 - NO REVISIONS SHALL BE MADE IN THESE PLANS WITHOUT THE APPROVAL OF THE COUNTY ENGINEER.
 - USE STANDARD MANHOLE FRAMES AND COVERS, S.A-117, EXCEPT AS NOTED.
 - USE STANDARD STRENGTH PIPE EXCEPT AS NOTED.
 - USE CEMENT MORTAR OR WEDGE LOCK OR SPEED SEAL FOR ALL WITHEPRED CLAY PIPE JOINTS PER SPECS. SEC. 36.36 PAR. 4.
 - RESURFACE ALL DRIVEWAYS WITHIN PAVED AREA TO MEET L.A. COUNTY ROAD DEPT. OR CALIF. STATE HIGHWAY DEPT. REQUIREMENTS IN ACCORDANCE WITH PERMITS.
 - SPACER FOUR FEET OF SEWER AT POINTS OF INTERFERENCE WITH POLES, S.A. 172 CASE 2E.
 - HOUSE LATERALS TO BE CONSTRUCTED WITH NOTES 7 & 8 AT PROPERTY LINE. 6' MIN. SLOPE CURB GRADE EXCEPT AS NOTED.
 - ALL STRUCTURES SHALL BE SINKED BY STRUCTURES, S.A-104, EXCEPT AS NOTED.
 - FOR ALLOWABLE LEAKAGE TEST USE FORMULA NO. 1, EXCEPT, SEC. 34.
 - MANHOLE TOPS IN UNIMPROVED AREAS TO BE 4" ABOVE FINISHED GRADE.
- ROUND CONSTRUCTION WILL BE PREVENTED IN FILLED AREAS UNLESS ACCEPTABLE CERTIFICATION IS SUBMITTED TO THE CONSTRUCTION DIVISION OF THE COUNTY ENGINEER'S DEPARTMENT THAT CONSTRUCTION IS GREATER THAN 80%.**
- IF CONSTRUCTION IS LESS THAN 80% THE SAME MUST BE GRADED AS SHOWN ON PLAN.**
- IF CONSTRUCTION IS GREATER THAN 80%, CRACKING AND SPECIAL MIX BASES ARE NOT REQUIRED. HOWEVER, JOINT COMPOUND MUST BE SUBSTITUTED FOR CEMENT MORTAR FOR ALL JOINTS IN FILLED AREAS.**
- IF THE PRIVATE ENGINEER IS TO PERFORM THE HOUSE LATERAL DEPTH AT THE PROPERTY LINE, BRUSH THE TOP OF CURB ELEVATION FOR EACH HOUSE LATERAL ON GRADE SHEET.**

ENGINEERING SERVICE CORPORATION			
1127 W. WASHINGTON BLVD.			
LOS ANGELES 15, CALIF. B. 9-7281			
REVISIONS		TRACED BY: JLS	
		DES'G'D BY: CWS	
		CK'D BY: G.B.	
		SUBMITTED:	
SUB STRUCTURES O.K'D			
W. O. NO.	DWG. NO.	DATE	SCALE L.B. P.B.
6681-82		Mar. 1957	1/4" = 1'-0" 114 114

PROFILE ALIGNMENT AND GRADE OF **P.C. 4395**
SANITARY SEWERS PAGE 1
 TO BE CONSTRUCTED IN

TRACT NO. 22200
PRIVATE CONTRACT NO. 4395

W.S. 27
 6 SHEETS, 11 PAGES
 SCALE: 1"=6' APRIL, 1957

27825

PREPARED IN THE OFFICES OF
ENGINEERING SERVICE CORPORATION

By: *E. J. K... ..*
 REG. C. E. NO. 3622

FOR LEGEND SEE PLAN NO. S-A-64

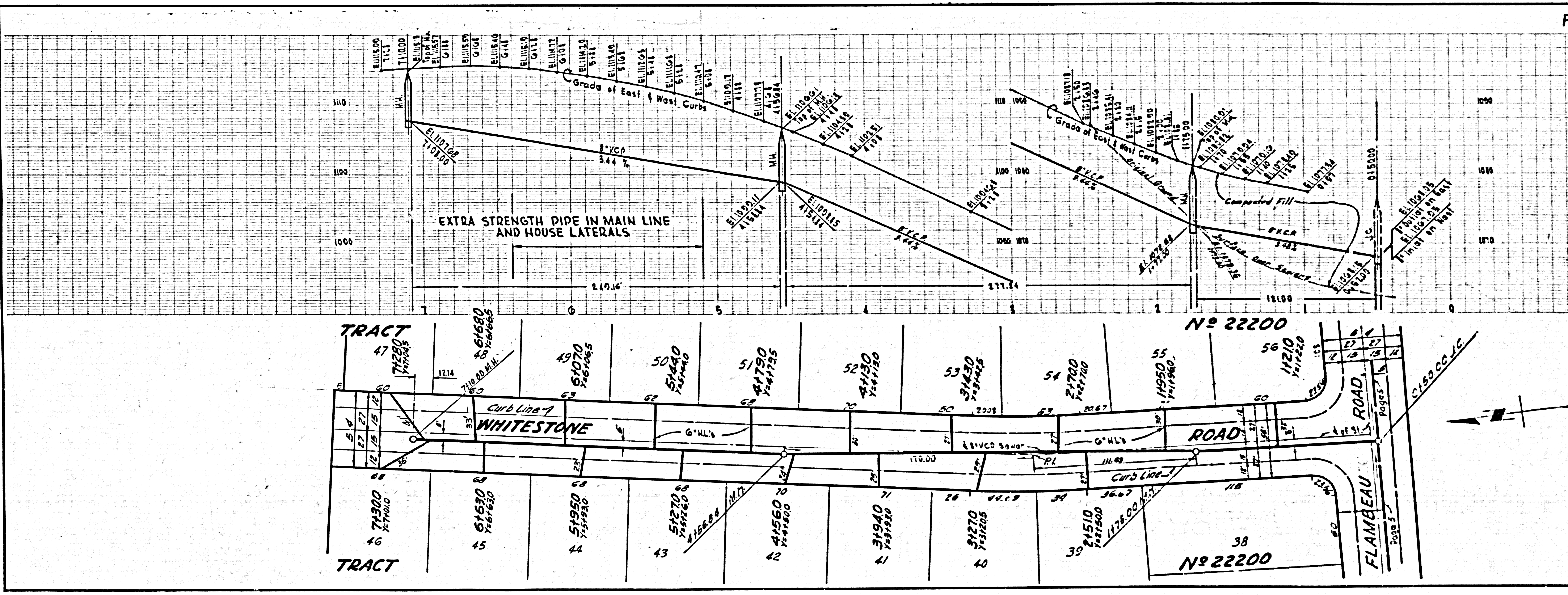
NOTE:
 GRADES TO WHICH THIS IMPROVEMENT IS TO BE CONSTRUCTED ARE SHOWN ON PLANS AND PROFILE. GRADE POINTS FOR TOP OF CURB, CENTER LINE OF STREETS, OR CENTER LINE OF ALLEYS ARE SHOWN BY CIRCLES ON PROFILES. AT ALL POINTS BETWEEN INDICATED POINTS THE GRADE SHALL BE ESTABLISHED SO AS TO CONFORM TO A STRAIGHT LINE DRAWN BETWEEN SAID INDICATED POINTS.
 ELEVATIONS ARE IN FEET ABOVE U.S.C. & G.S. SEA LEVEL DATUM OF 1929.
 THE BEARING AND THE DATA HEREON ARE HEREBY MADE A PART OF THE SPECIFICATIONS.
 WORK SHALL BE CONSTRUCTED ACCORDING TO SPECIFICATIONS ON FILE IN THE OFFICE OF THE COUNTY ENGINEER AND SHALL BE PROSECUTED ONLY IN THE PRESENCE OF THE COUNTY ENGINEER.
 BEFORE WORK CAN BE LAYED OUT THE CONTRACTOR MUST OBTAIN A PERMIT TO EXCAVATE IN COUNTY STREETS FROM THE L.A. COUNTY ROAD DEPT., DIST. 1133 AND MAKE A DEPOSIT WITH THE COUNTY ENGINEER, ROOM 224 PAN AMERICAN BUILDING, 233 SO. HOUGHTON STREET TO COVER THE COST OF CONSTRUCTION INSPECTION AND RECORD PLANS.
 APPROVAL OF THIS PLAN BY THE COUNTY OF LOS ANGELES DOES NOT CONSTITUTE A REPRESENTATION AS TO THE ACCURACY OF THE LOCATION OR OF THE EXISTENCE OR NON-EXISTENCE OF ANY UNDERGROUND UTILITY PIPE, OR STRUCTURE WITHIN THE LIMITS OF THIS PROJECT. THIS NOTE APPLIES TO ALL PAGES.
 IF WORK IS TO BE DONE IN A STATE HIGHWAY, A PERMIT MUST BE OBTAINED FROM THE STATE OF CALIFORNIA, DIVISION OF HIGHWAYS, 128 SOUTH SPRING STREET.

COUNTY OF LOS ANGELES, CALIFORNIA
 APPROVED, JOHN A. LAMBE, COUNTY ENGINEER
 APPROVED, C.R. COMPTON, CHIEF ENGINEER
 CO. SAN. ENG. NO. 8
 By: *L. A. Hughes* By: *C. R. Compton*
 SANITATION ENGINEER OFFICE ENGINEER
 CHECKED BY: *G.K. Oida 1-22-59*
 OFFICE OF COUNTY ENGINEER, BLDG. C. E. NO. 3406

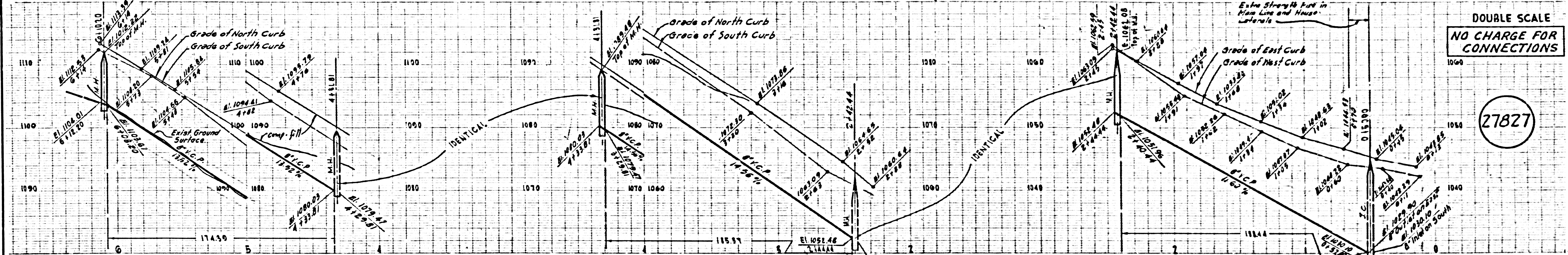
P.C. 4395 PAGE 2

DOUBLE SCALE
NO CHARGE FOR CONNECTIONS

27826

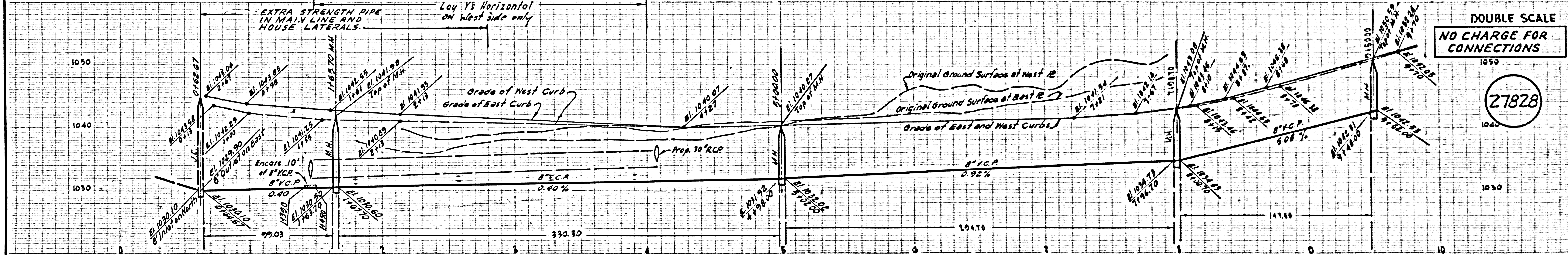
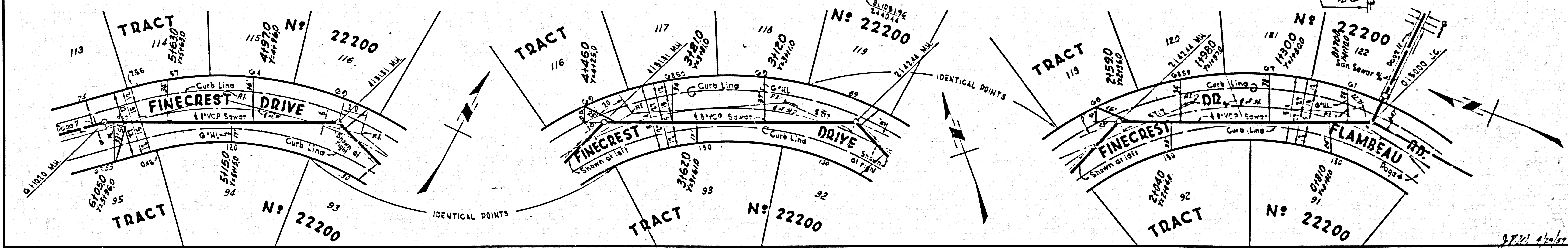


27826-27-57



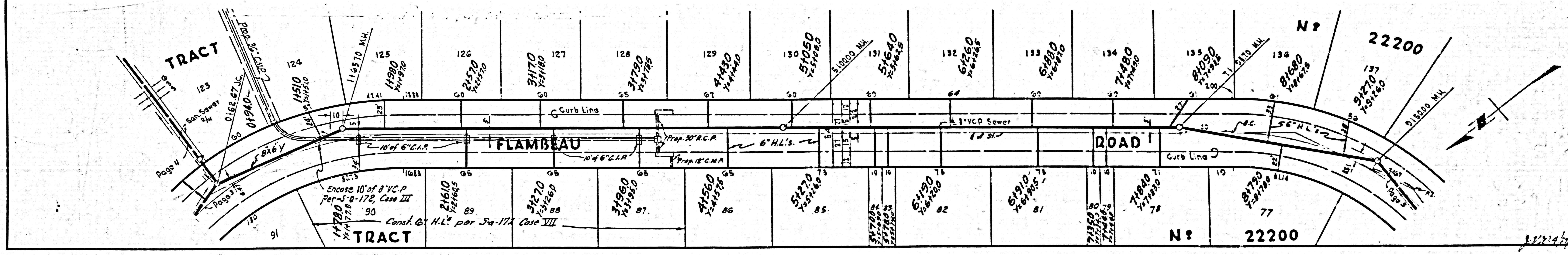
DOUBLE SCALE
NO CHARGE FOR CONNECTIONS

27827



DOUBLE SCALE
NO CHARGE FOR CONNECTIONS

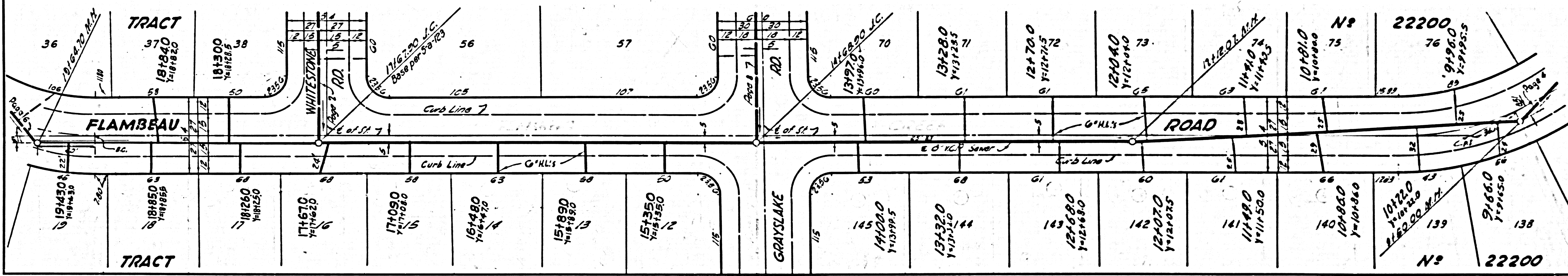
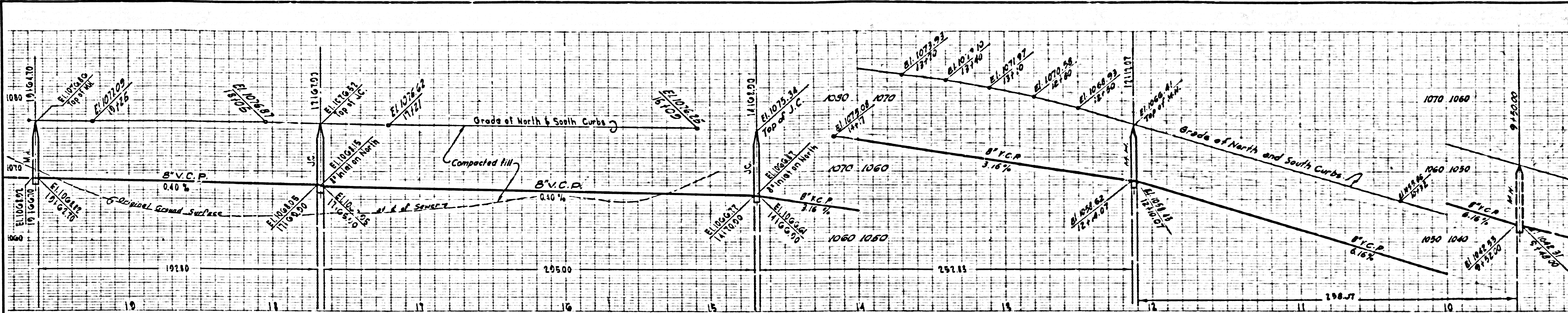
27828



DOUBLE SCALE

NO CHARGE FOR CONNECTIONS

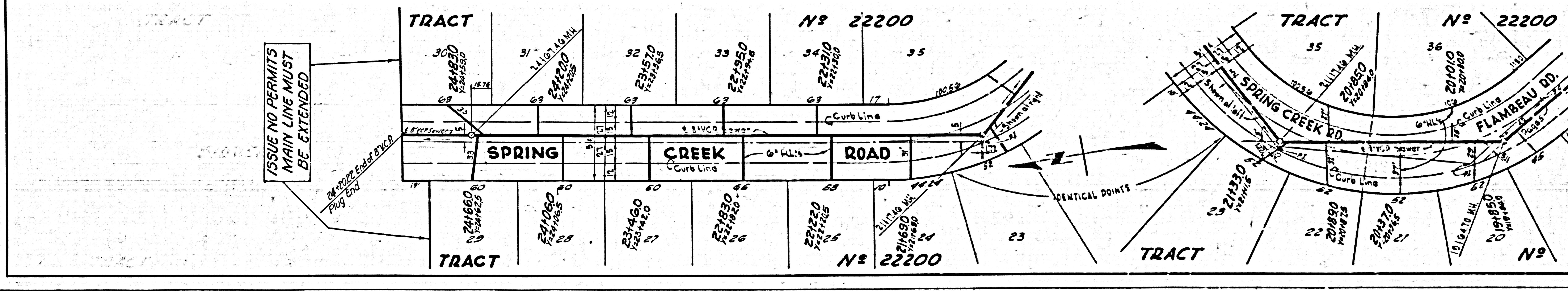
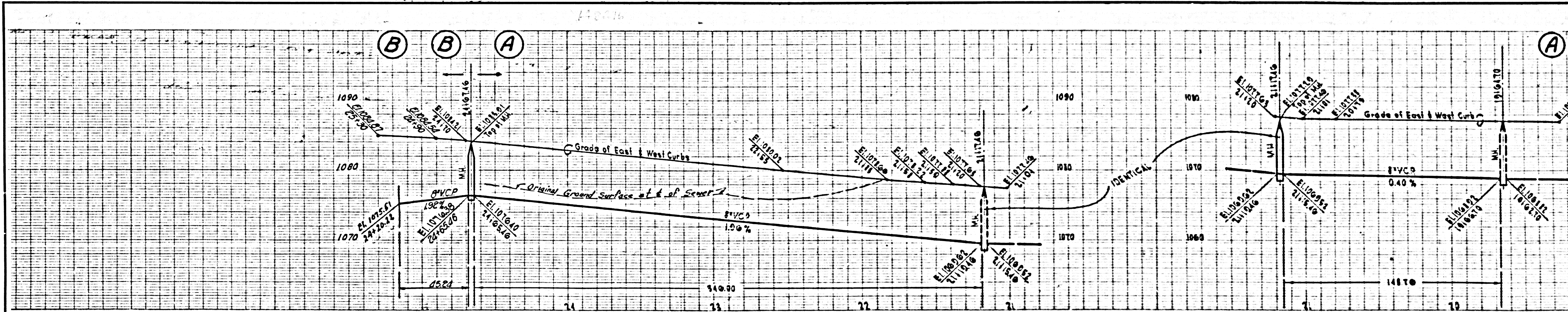
27829



DOUBLE SCALE

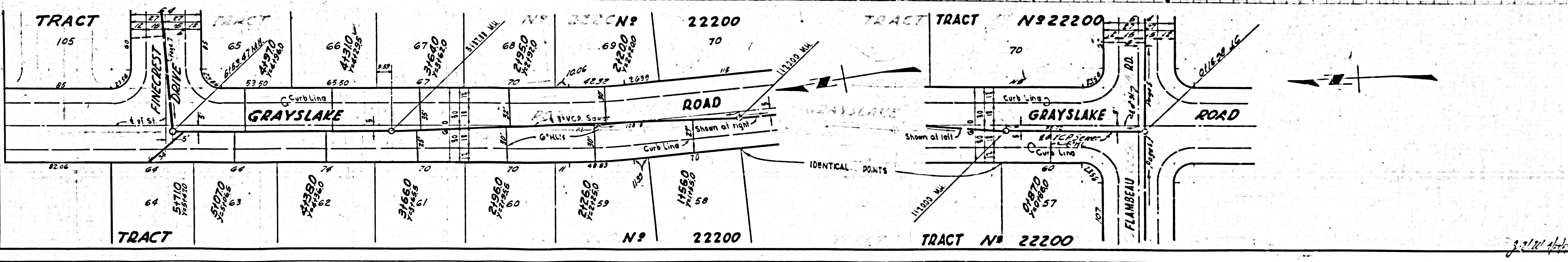
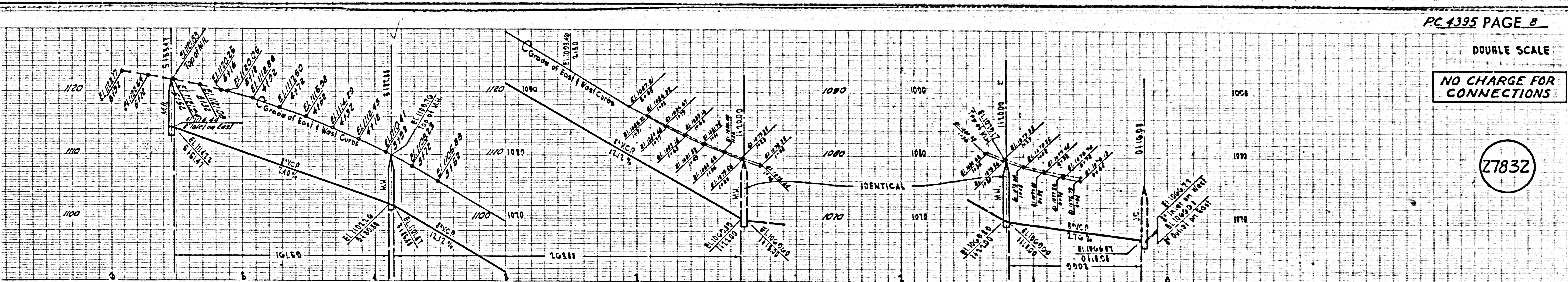
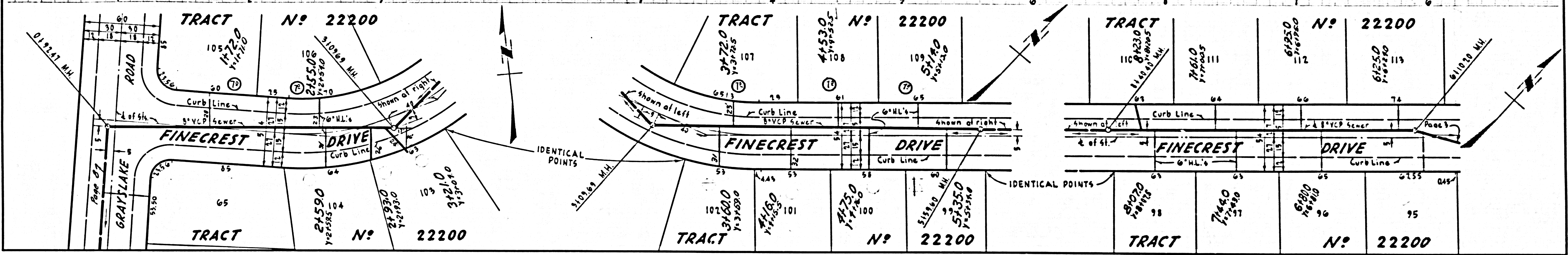
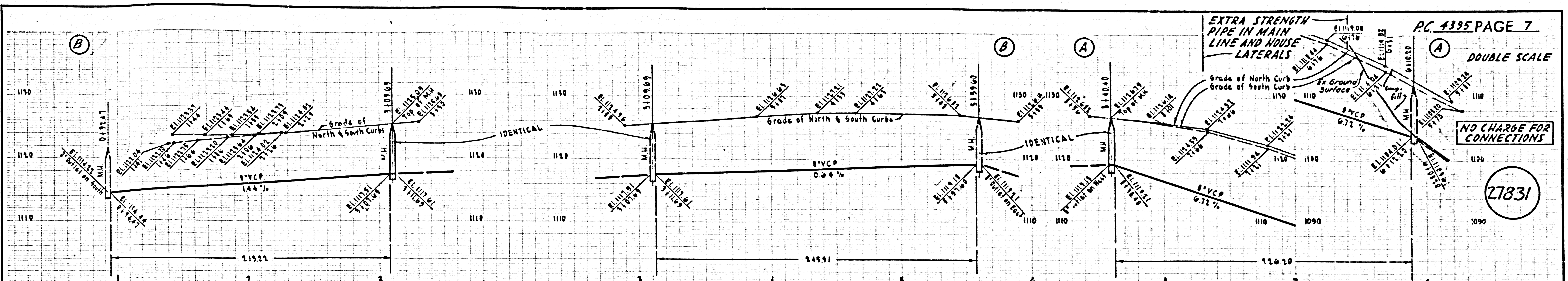
NO CHARGE FOR CONNECTIONS

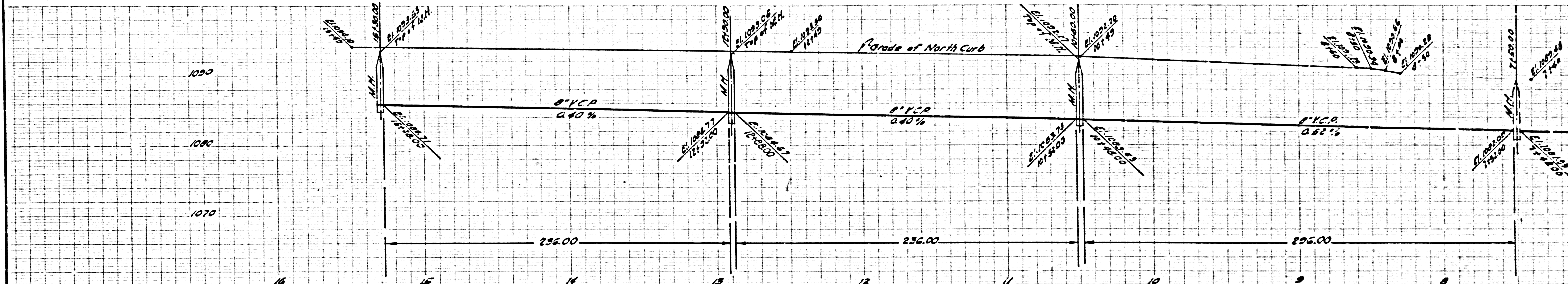
27830



ISSUE NO PERMITS
MAIN LINE MUST
BE EXTENDED

PC.4395 TRACT NO. 55500

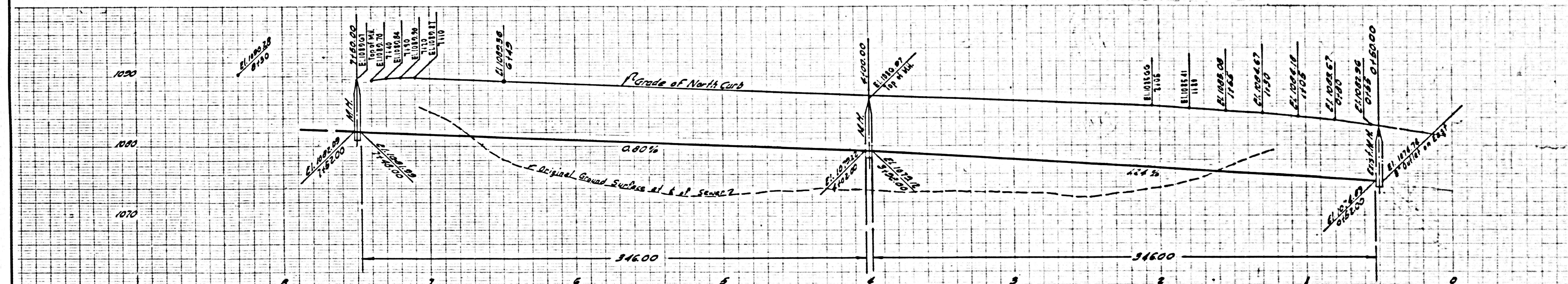
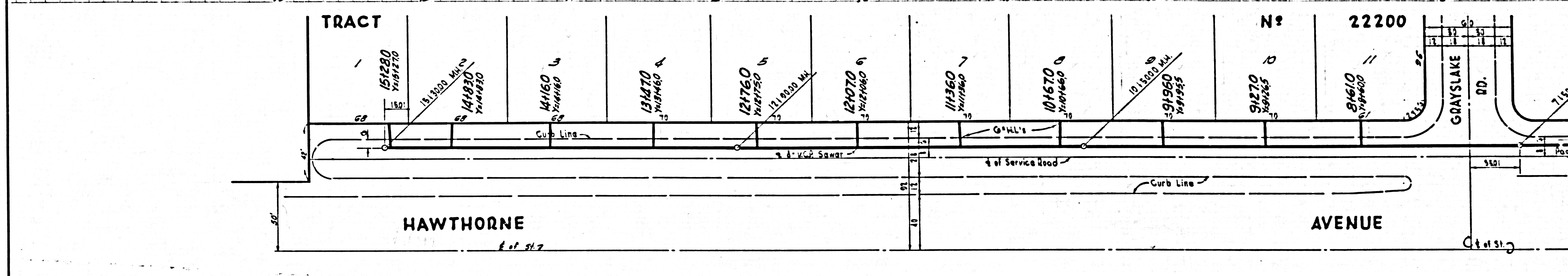




DOUBLE SCALE

NO CHARGE FOR CONNECTIONS

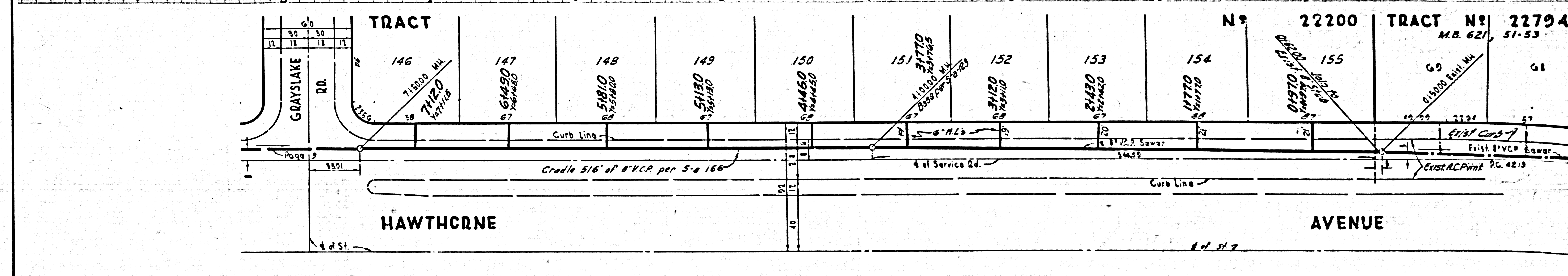
27833



DOUBLE SCALE

NO CHARGE FOR CONNECTIONS

27834



TRACT NO 55500

PC 4395 PAGE II
 DOUBLE SCALE
 NO CHARGE FOR CONNECTIONS

27835

