

BENCH MARK SY 5851
 L.A. COUNTY SURVEY MON. & INI.
 CENTRALIA RD. & NORWALK BLVD.
 ELEV. 32.595 ARTESIA QUAD.

BELLFLOWER BLDG. DIST. NO. 4 (LAKEWOOD OFFICE) SANITARY SEWERS PAGE 1

PROFILE ALIGNMENT AND GRADE OF P.C. 4397
 TO BE CONSTRUCTED IN
 TRACT N^o 23367 (26/46)

PRIVATE CONTRACT NO. 4397

W.S. 31
 3 SHEETS, 7 PAGES
 SCALE: VERT. 1" = 4'
 HORIZ. 1" = 40'
 MARCH, 1957
 PREPARED IN THE OFFICES OF
 VOORHEIS-TRINDLE-NELSON, INC.
 12602 GARDEN GROVE BLVD.
 GARDEN GROVE, CALIF.
 BY: *CR Nelson*
 REG. C. E. NO. 8781

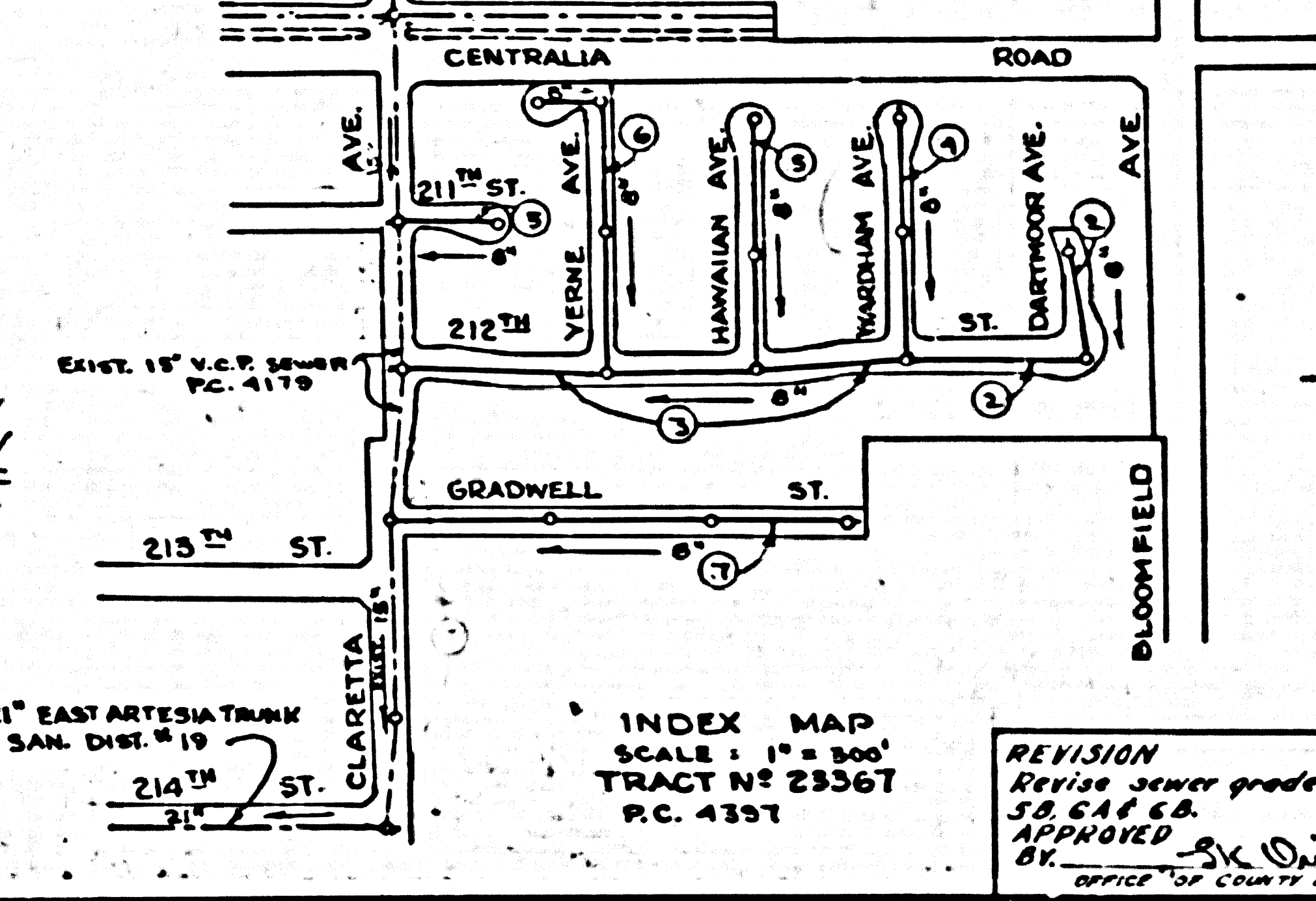
FOR LEGEND SEE PLAN NO. S-4-64

LOTS 12, 13 & 14 are served
 by H.L.'s Constructed under
 P.C. 4179

NO CHARGE FOR
 CONNECTIONS
2. C. Nelson 5-29-58

NOTE:
 THE CONTRACTOR SHALL NOTIFY THE CONSTRUCTION
 AND STORM DRAIN DIVISION BY TELEPHONE, MADISON
 9-4747 EXT. 362, AT LEAST 24 HOURS BEFORE START-
 ING ANY WORK UNDER THIS CONTRACT.

- NOTES
- PROVIDE STAKES ON THE PROPERTY LINE OR PROPERTY LINES PRODUCED AT RIGHT ANGLES TO THE SEWER LINE AT THE CENTER LINE OF EACH RANWHOLE.
 - NO REPRESENTATIVE OF THE COUNTY ENGINEER WILL SURVEY OR LAYOUT ANY PORTION OF THE WORK.
 - THE OWNER OR HIS AUTHORIZED REPRESENTATIVE SHALL FURNISH THE COUNTY ENGINEER WITH GRADE SHEETS AND STATION FOR ALL HOUSE LATERALS AND T-Y BRANCHES AND SHALL PROVIDE STAKES FOR THESE AT THEIR PROPER LOCATIONS WITH STATIONING AND PLAINLY MARKED. ANY CHANGE IN LOCATION SHALL BE REQUESTED IN WRITING BY THE OWNER OR HIS REPRESENTATIVE.
 - NO REVISIONS SHALL BE MADE IN THESE PLANS WITHOUT THE APPROVAL OF THE COUNTY ENGINEER.
 - USE STANDARD MANHOLE FRAMES AND COVERS, S.A-117, EXCEPT AS NOTED.
 - USE STANDARD STRENGTH PIPE EXCEPT AS NOTED.
 - RESURFACE ALL TRENCH WITHIN PAVED AREA TO MEET L.A. COUNTY ROAD DEPT. OR CALIF. STATE HIGHWAY DEPT. REQUIREMENTS IN ACCORDANCE WITH PERMITS.
 - INCASE FOUR FEET OF SEWER AT POINTS OF INTERFERENCE WITH POLES, S.A-119.
 - HOUSE LATERALS TO BE CONSTRUCTED WITH INVERTS AT PROPERTY LINE. SEE DETAIL SHOW CURB GRADE EXCEPT AS NOTED.
 - ALL STRUCTURES SHALL BE BRICK SEWER STRUCTURES, S.A-104, EXCEPT AS NOTED.
 - FOR ALLOWABLE MANHOLE TEST USE FORMULA NO. 2, S.P.C.S., SEC. 64.
 - MANHOLE SOLES TO BE CONSTRUCTED ACCORDING TO S.P.C.S. SEC. 64.
 - THE PRIVATE OWNER IS TO FURNISH THE HOUSE LATERALS DEPTH AT THE PROPERTY LINE BELOW THE TOP OF CURB ELEV. FOR EACH HOUSE LATERAL ON THE GRADE SHEET.
 - USE METAL FORMS AND GASKETS, OR "WHEEL-LOCK", OR "SPEED-SEAL" FOR ALL VITRIFIED CLAY PIPE JOINTS PER S.P.C.S. SEC. 36 & 40.



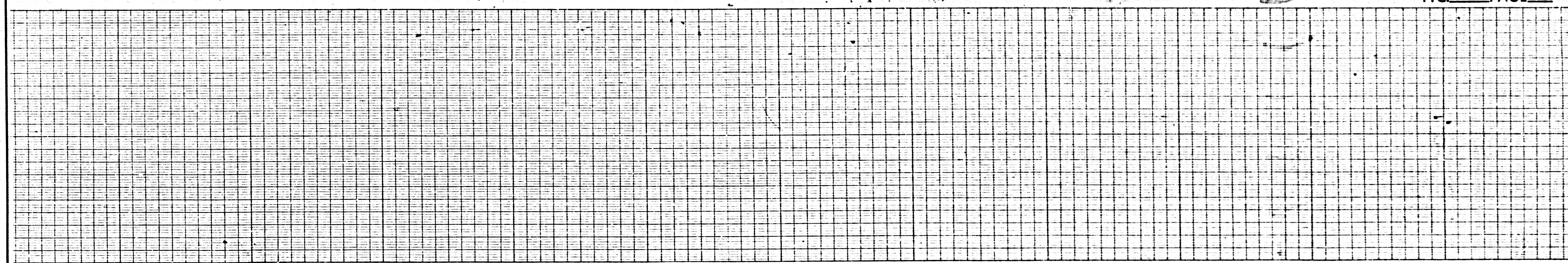
INDEX MAP
 SCALE: 1" = 300'
 TRACT N^o 23367
 P.C. 4397

REVISION
 Revise sewer grade on Pages 5A,
 5B & 4A
 APPROVED *SK Wicks 6-16-58*
 BY: OFFICE OF COUNTY ENGINEER, REG. C. E. NO. 3406

NOTE:
 GRADES TO WHICH THIS IMPROVEMENT IS TO BE CONSTRUCTED ARE SHOWN ON PLANS AND PROFILE GRADE POINTS FOR TOP OF CURB, CENTER LINE OF STREETS, OR CENTER LINE OF ALLEYS ARE SHOWN BY CIRCLES ON PROFILES AT ALL POINTS BETWEEN DESIGNATED POINTS. THE GRADE SHALL BE ESTABLISHED SO AS TO CONFORM TO A STRAIGHT LINE DRAWN BETWEEN SAID DESIGNATED POINTS.
 ELEVATIONS ARE IN FEET ABOVE M.S.L. & S.E. SEA LEVEL, UNLESS OTHERWISE NOTED.
 THIS DRAWING AND THE DATA HEREON ARE HEREBY MADE A PART OF THE SPECIFICATIONS.
 WORK SHALL BE CONSTRUCTED ACCORDING TO SPECIFICATIONS ON FILE IN THE OFFICE OF THE COUNTY ENGINEER AND SHALL BE PROSECUTED ONLY IN THE PRESENCE OF THE COUNTY ENGINEER.
 BEFORE WORK CAN BE STARTED, THE CONTRACTOR MUST OBTAIN A PERMIT TO EXCAVATE IN COUNTY STREETS FROM THE L.A. COUNTY ROAD DEPT. S.P.C.S. SEC. 64 AND MAKE A DEPOSIT WITH THE COUNTY ENGINEER, ROOM 254 FARM ANCHORAGE BLDG., 126 SO. BROADWAY, SUFFICIENT TO COVER THE COST OF CONSTRUCTION INSPECTION AND RECORD PLANS.
 APPROVAL OF THIS PLAN BY THE COUNTY OF LOS ANGELES DOES NOT CONSTITUTE A REPRESENTATION AS TO THE ACCURACY OF THE LOCATION OR OF THE EXISTENCE OR NON-EXISTENCE OF ANY UNDERGROUND UTILITY PIPE, OR STRUCTURE WITHIN THE LIMITS OF THIS PROJECT. THIS NOTE APPLIES TO ALL PAGES.
 IF WORK IS TO BE DONE IN A STATE HIGHWAY, A PERMIT MUST BE OBTAINED FROM THE STATE OF CALIFORNIA, DIVISION OF HIGHWAYS, 130 SOUTH SPRING STREET.

COUNTY OF LOS ANGELES, CALIFORNIA
 APPROVED, JOHN A. LAMBE, COUNTY ENGINEER
 APPROVED, A. M. RAWN, CHIEF ENGINEER
 BY: *J. A. Lamb* SAN. ENG. NO. 12
 BY: *A. M. Rawn* OFFICE ENGINEER
 CHECKED BY: *SK Wicks 6-2-58*
 OFFICE OF COUNTY ENGINEER, REG. C. E. NO. 3406

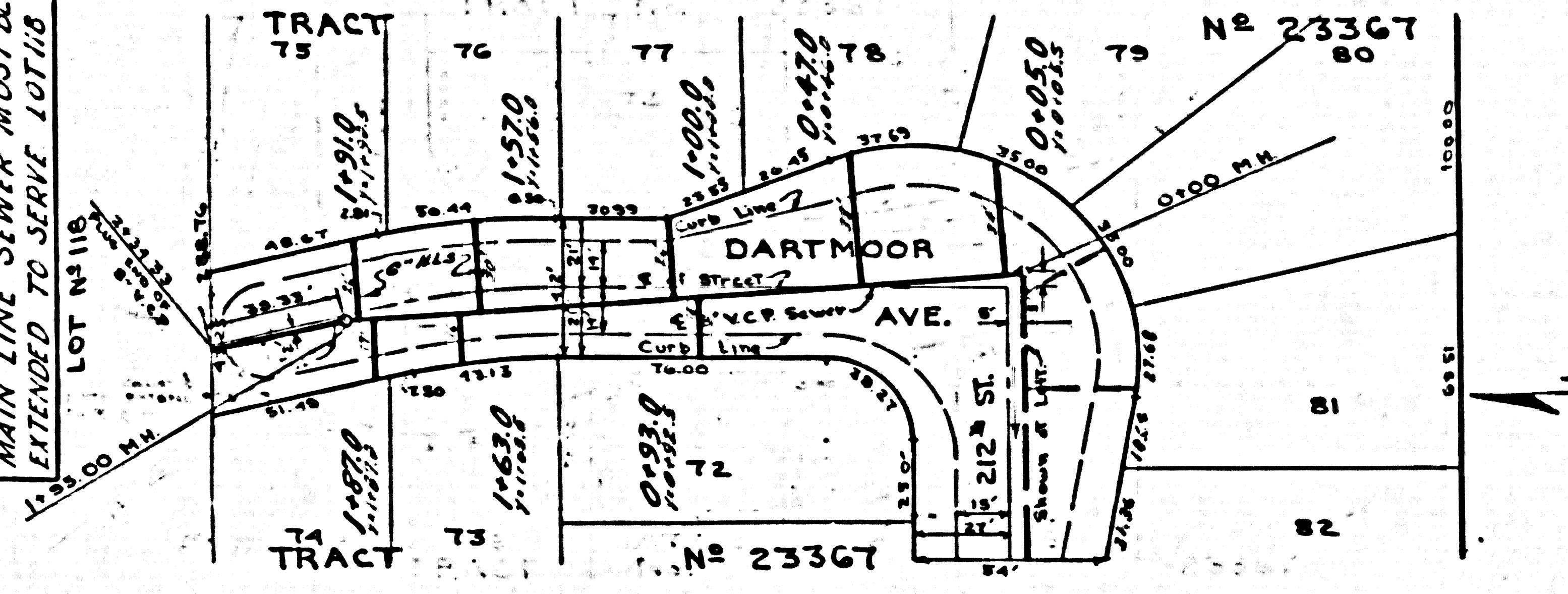
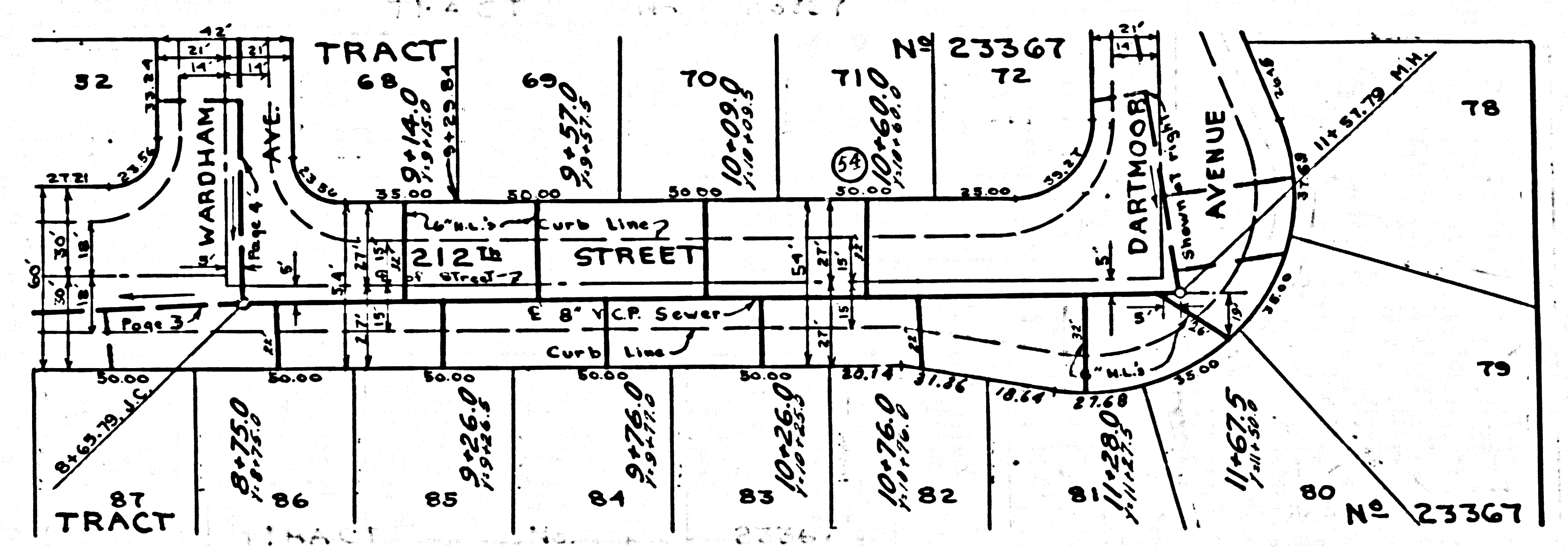
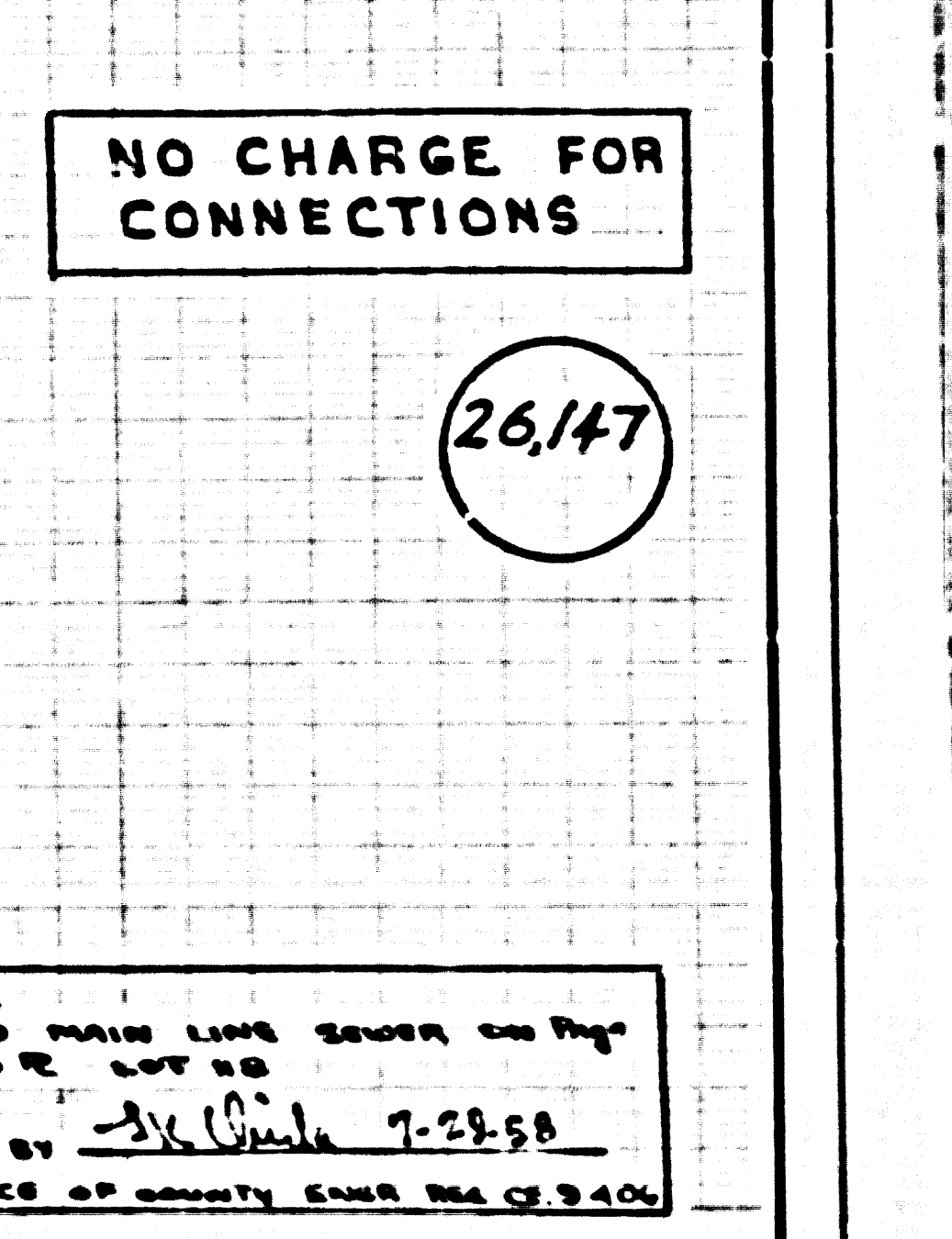
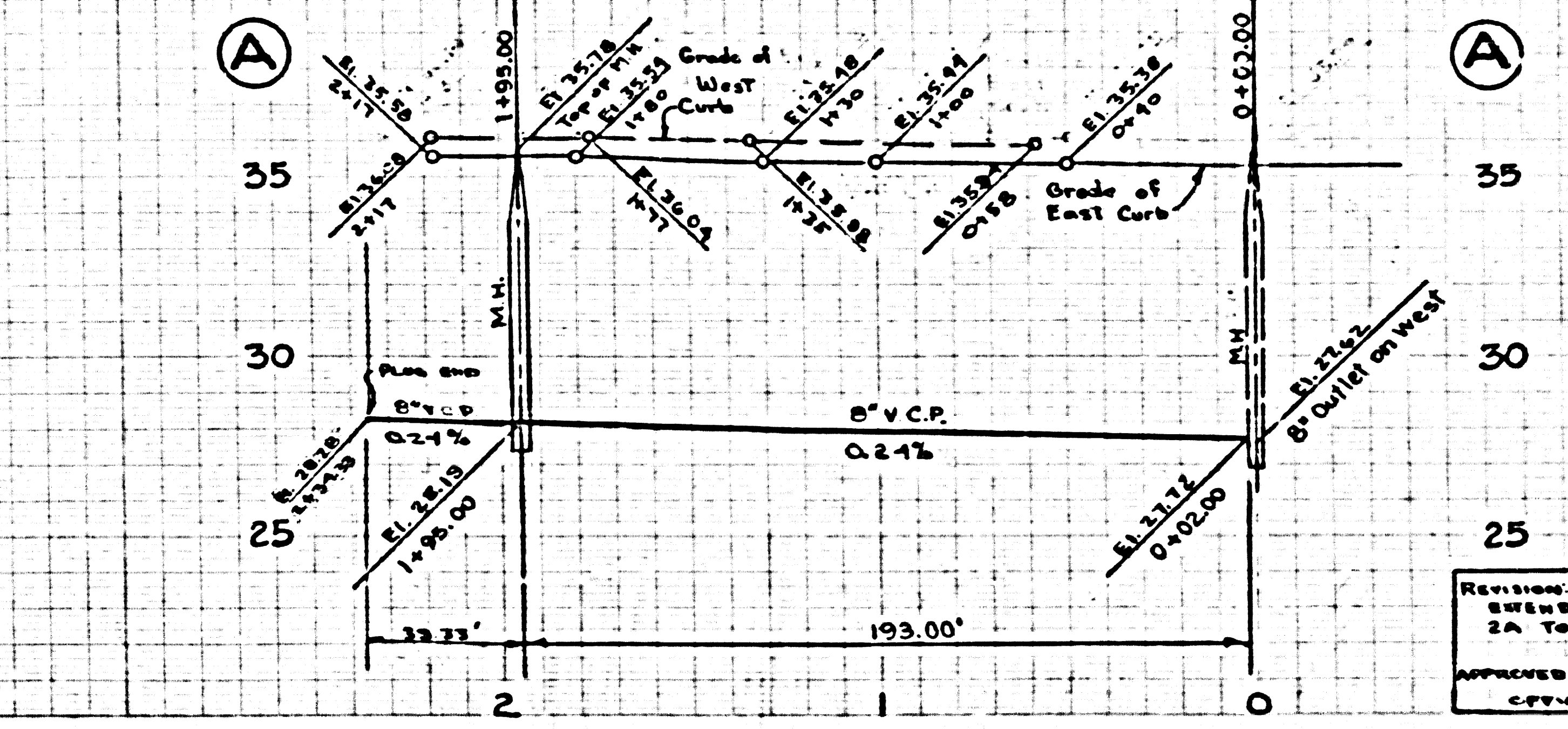
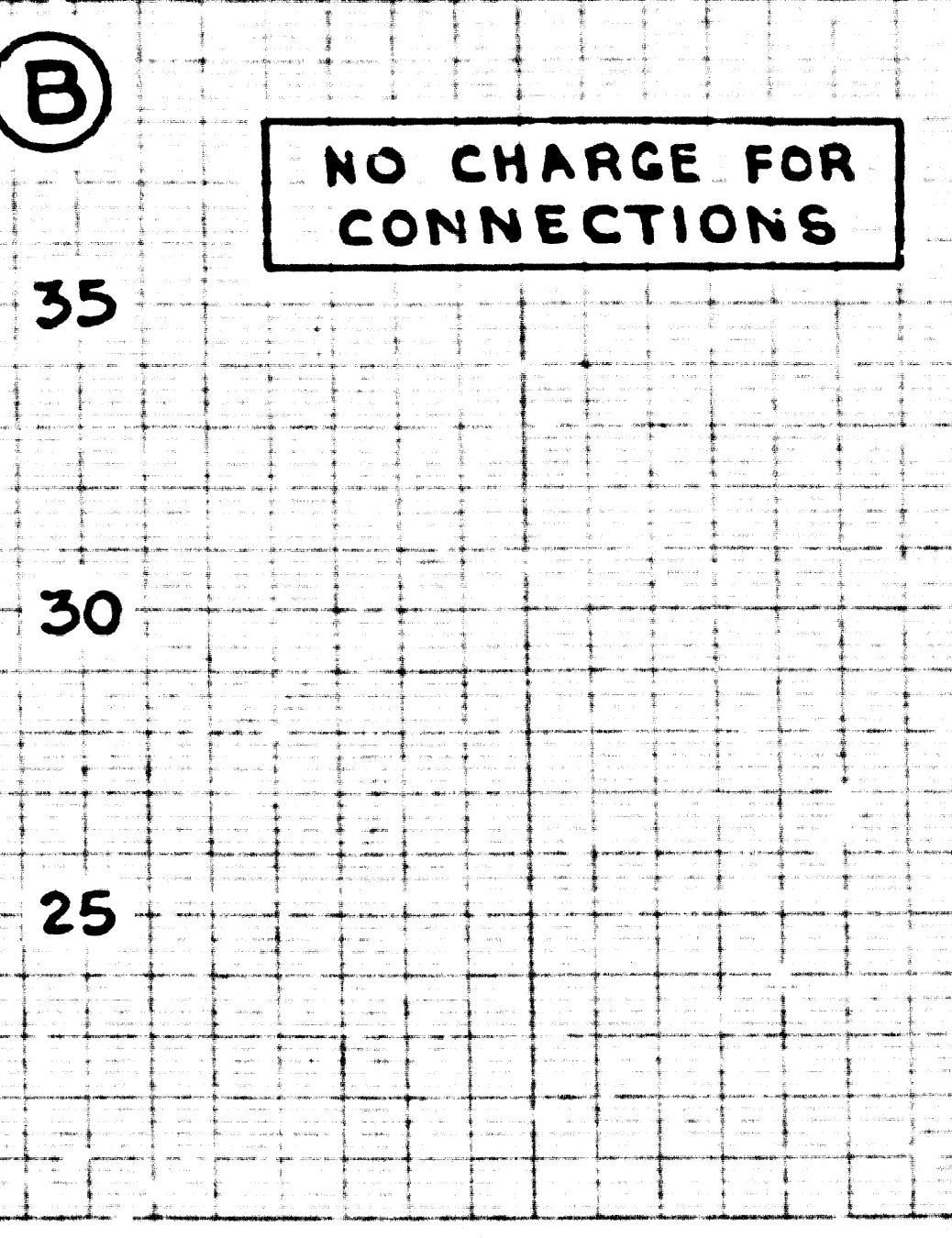
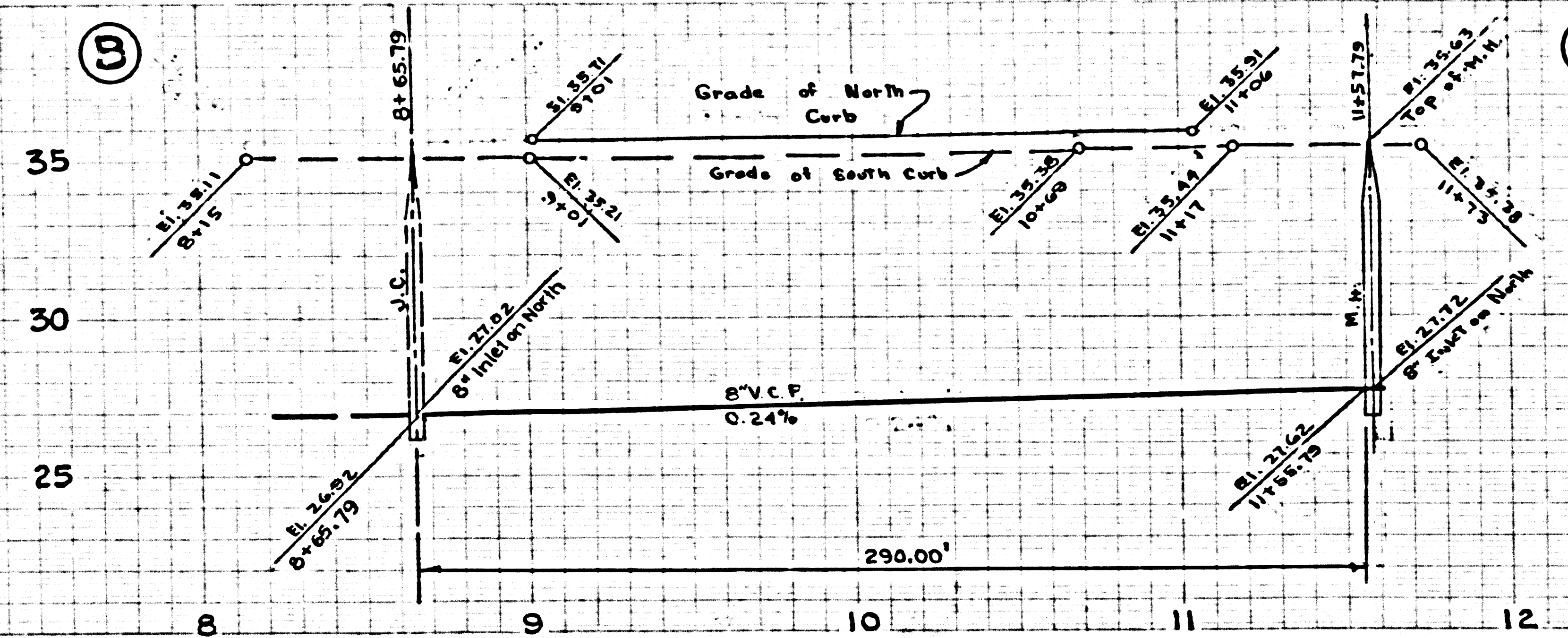
P.C. _____ PAGE _____



TRACT

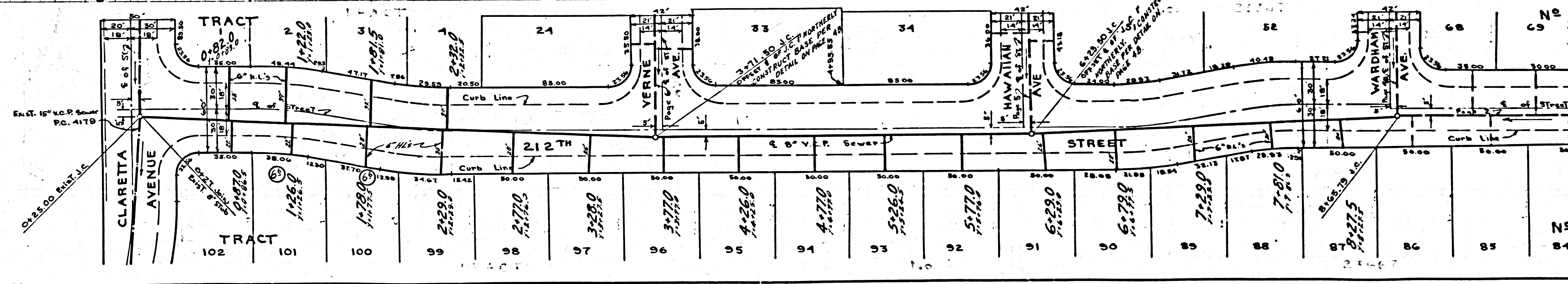
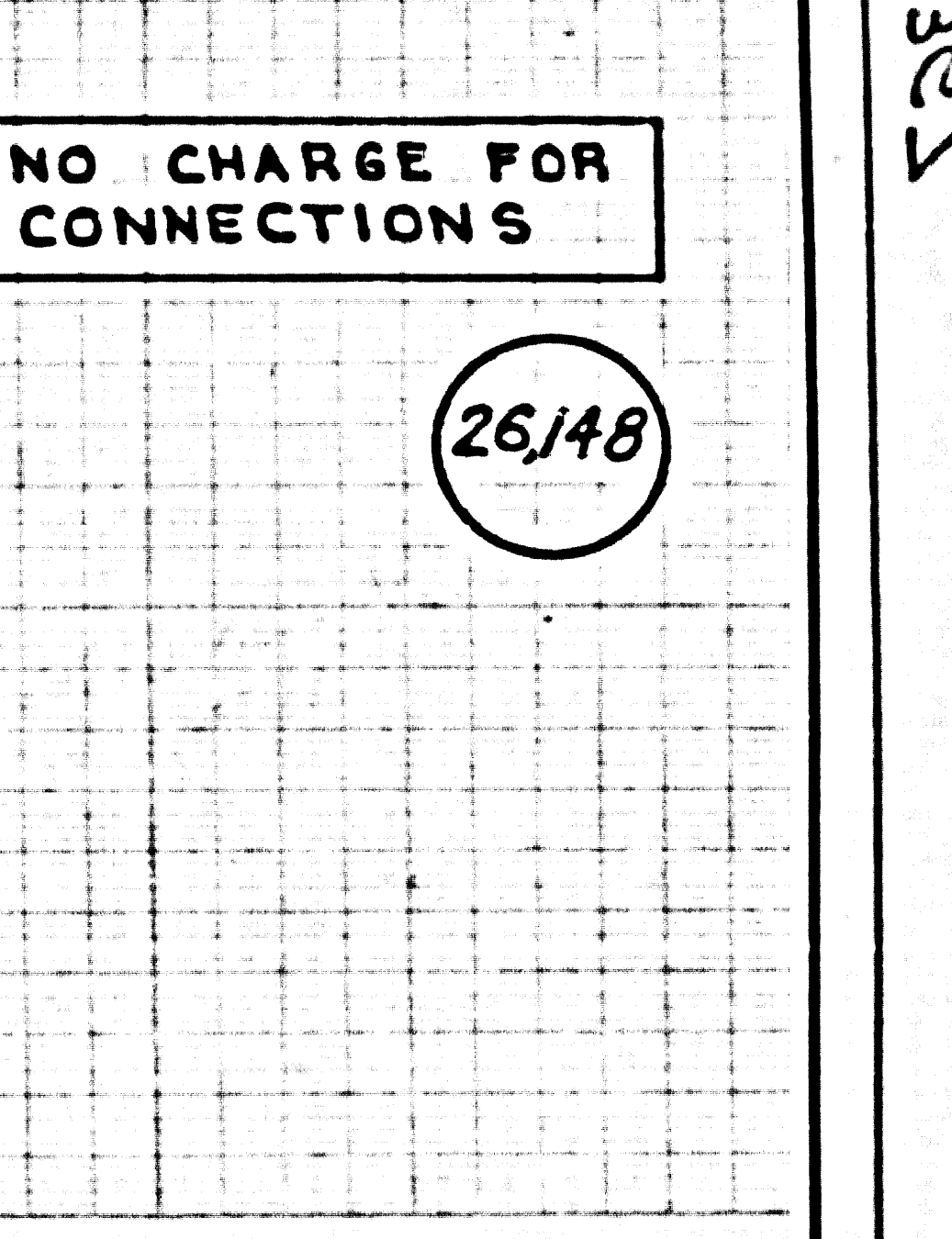
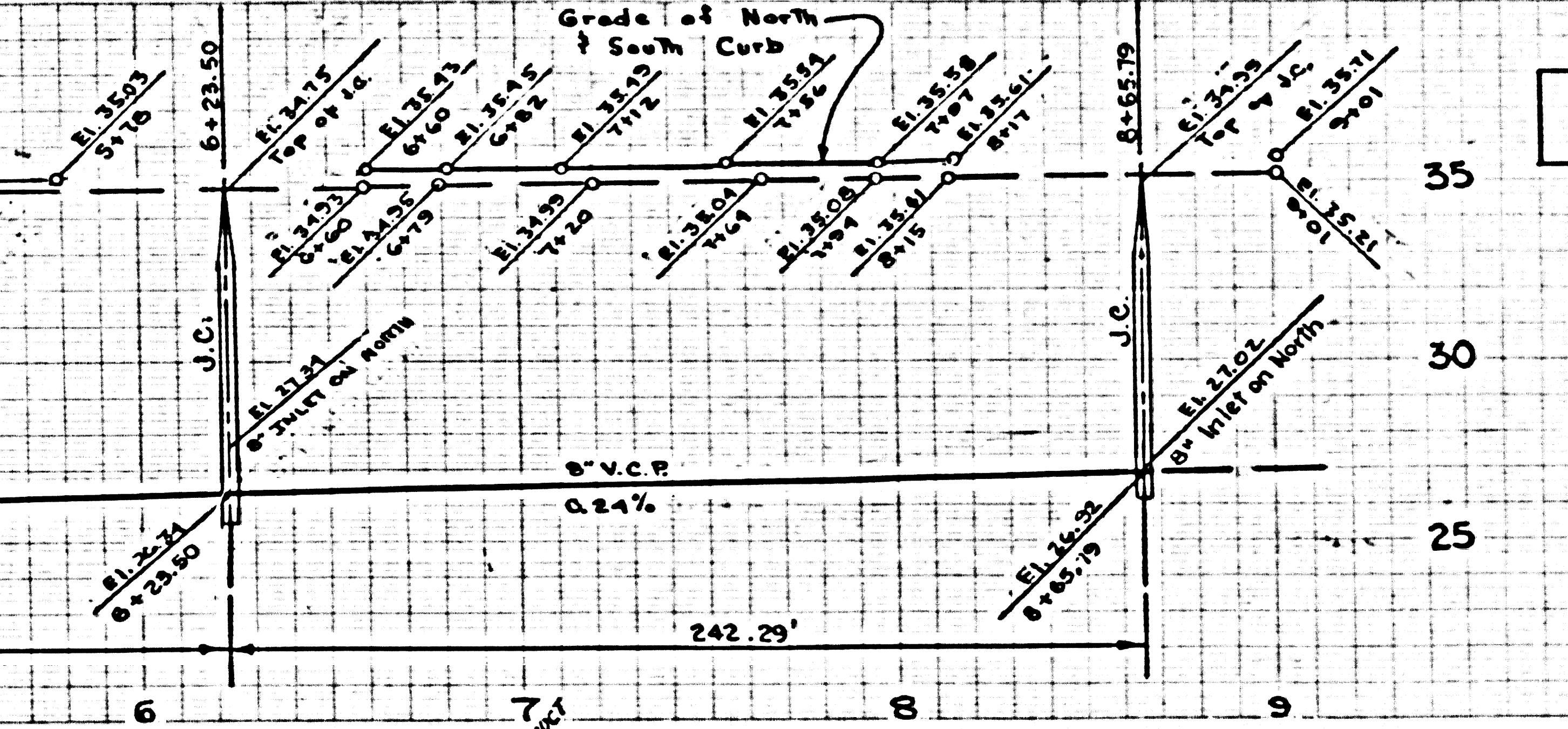
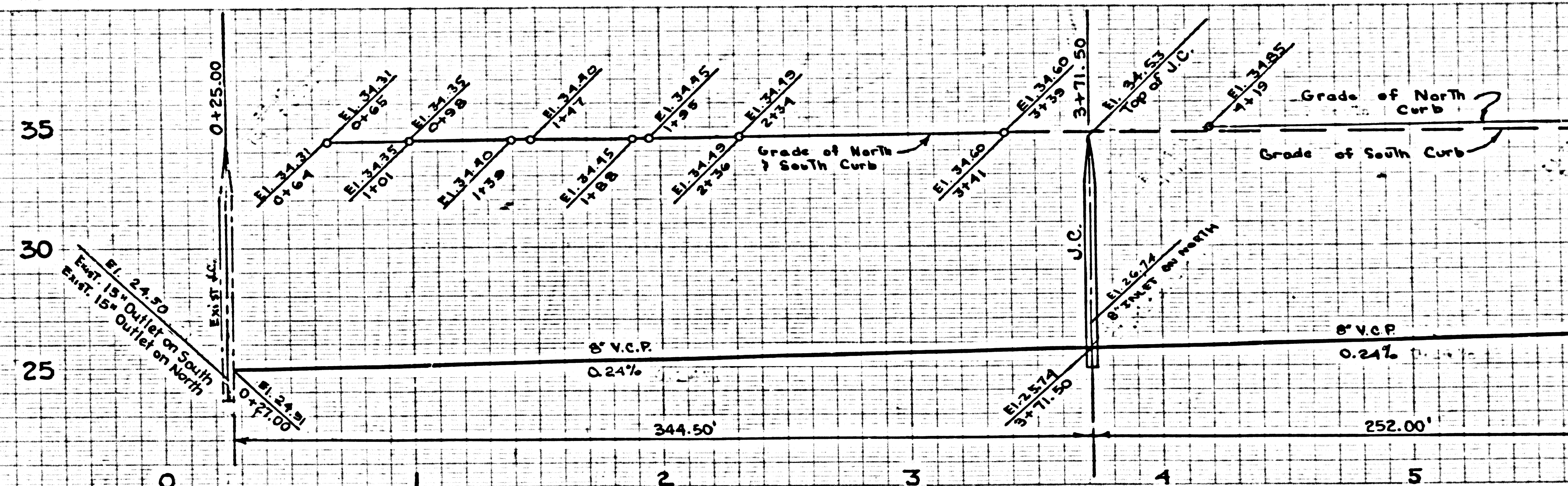
53367

P.C. 4397



Revision: GROUND MAIN LINE SEWER ON THE 2A TO B APPROVED BY [Signature] 7-28-58 OFFICE OF COUNTY ENGINEER R. G. B. CO.

26,147

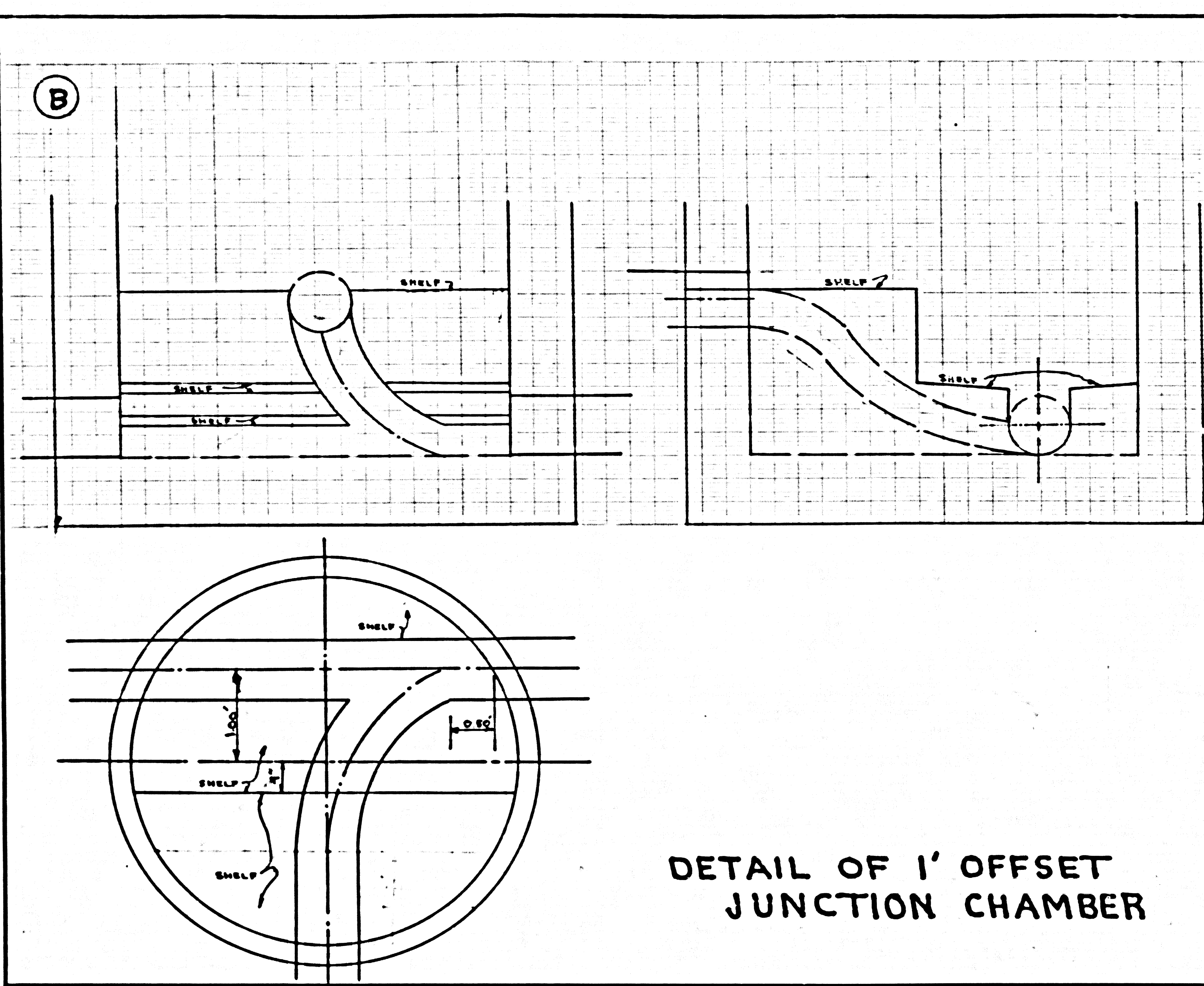


26,148

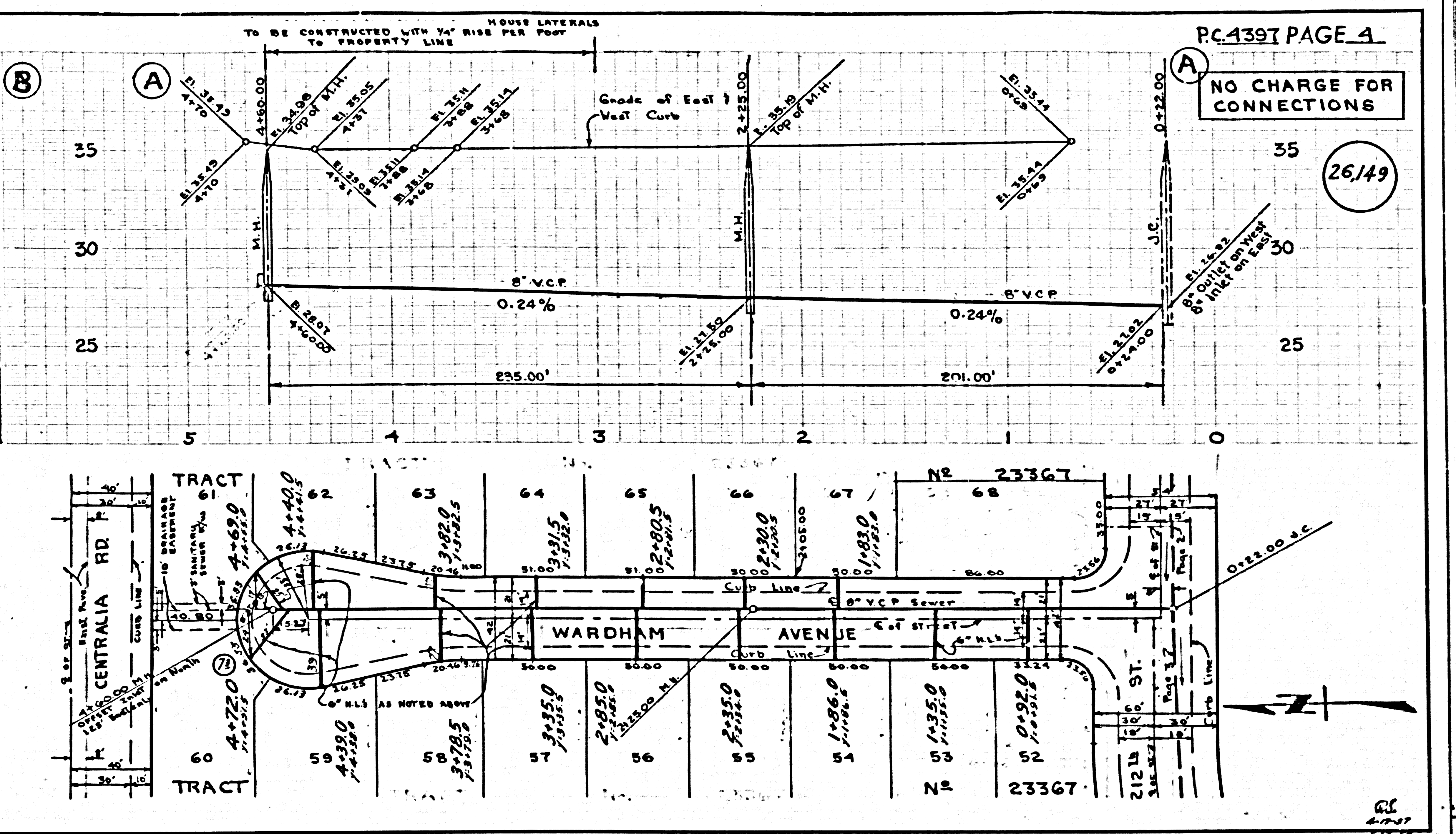
TRACT 1

53921

BC 4397

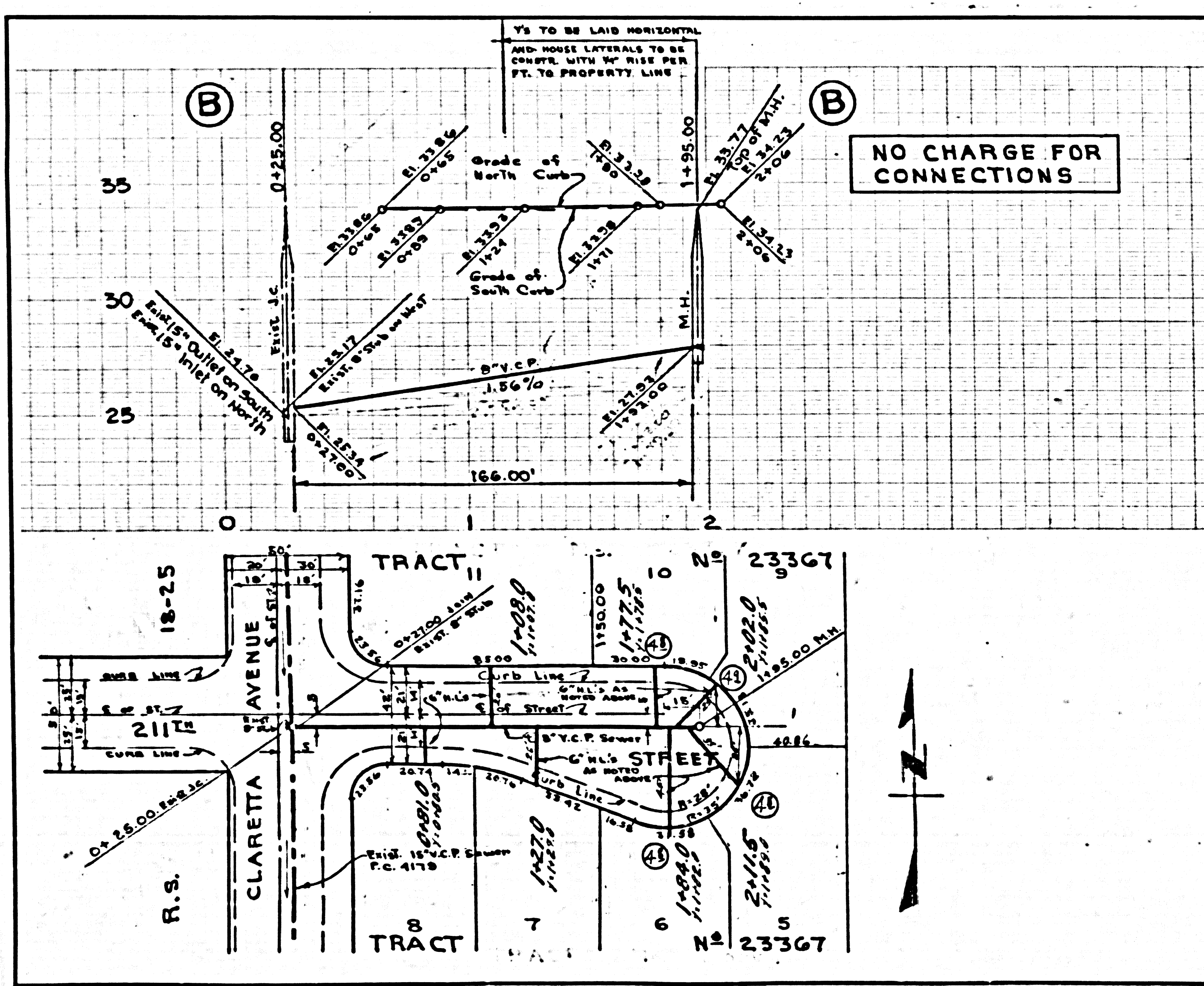


DETAIL OF 1' OFFSET JUNCTION CHAMBER



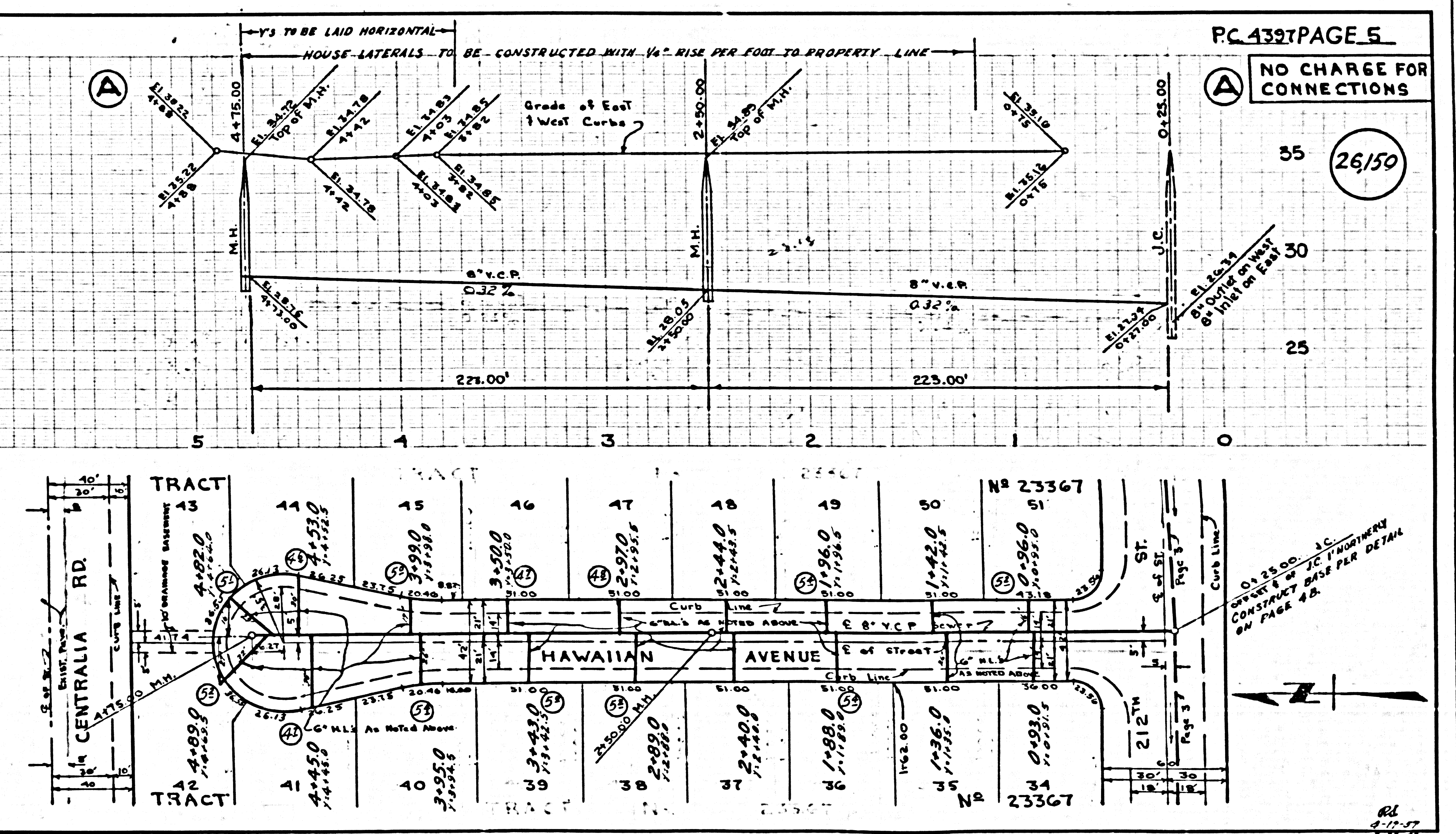
PC 4397 PAGE 4
NO CHARGE FOR CONNECTIONS

26,149



PC 4397 PAGE 5
NO CHARGE FOR CONNECTIONS

26,150

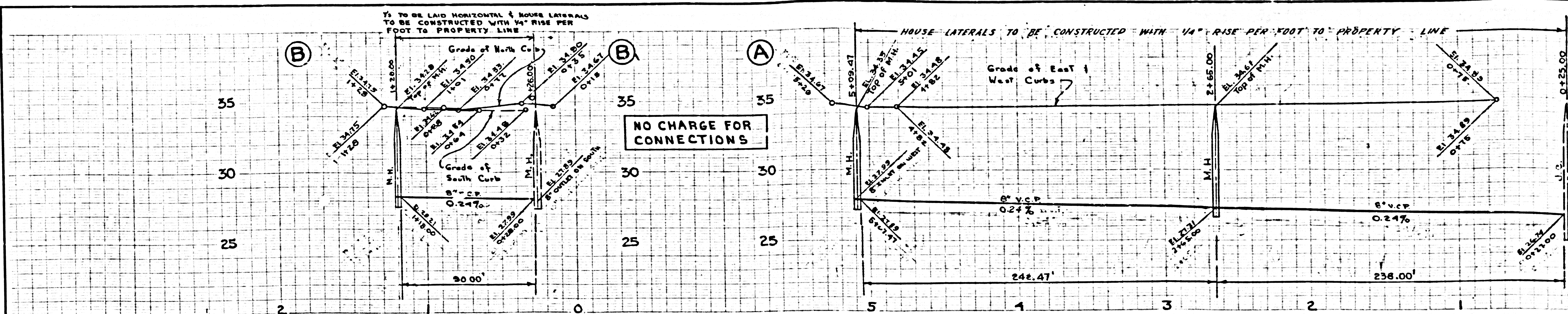


PC 4397 PAGE 5
NO CHARGE FOR CONNECTIONS

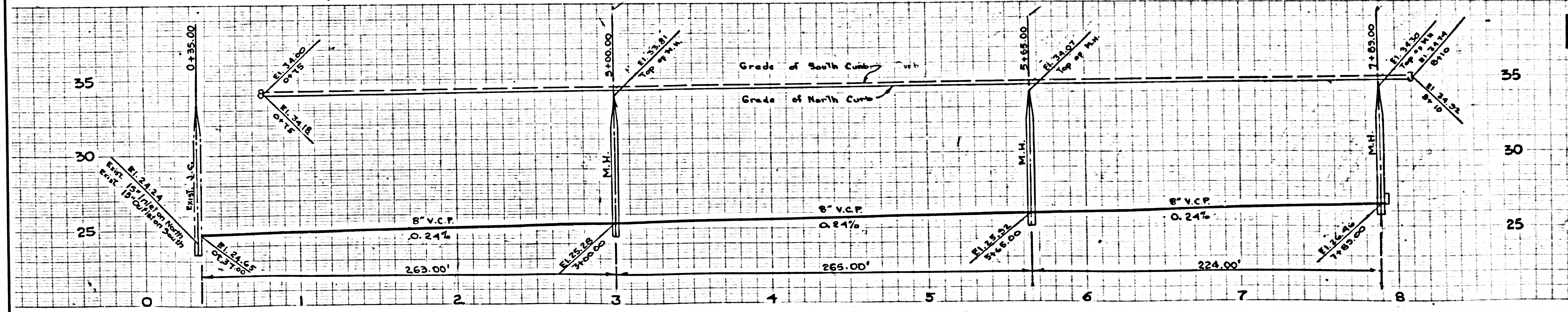
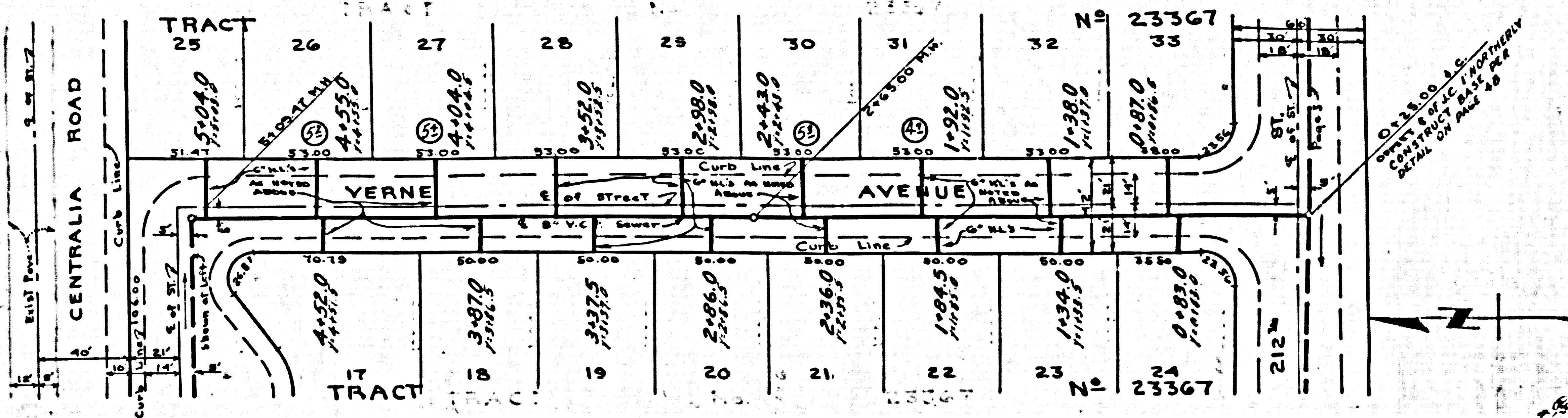
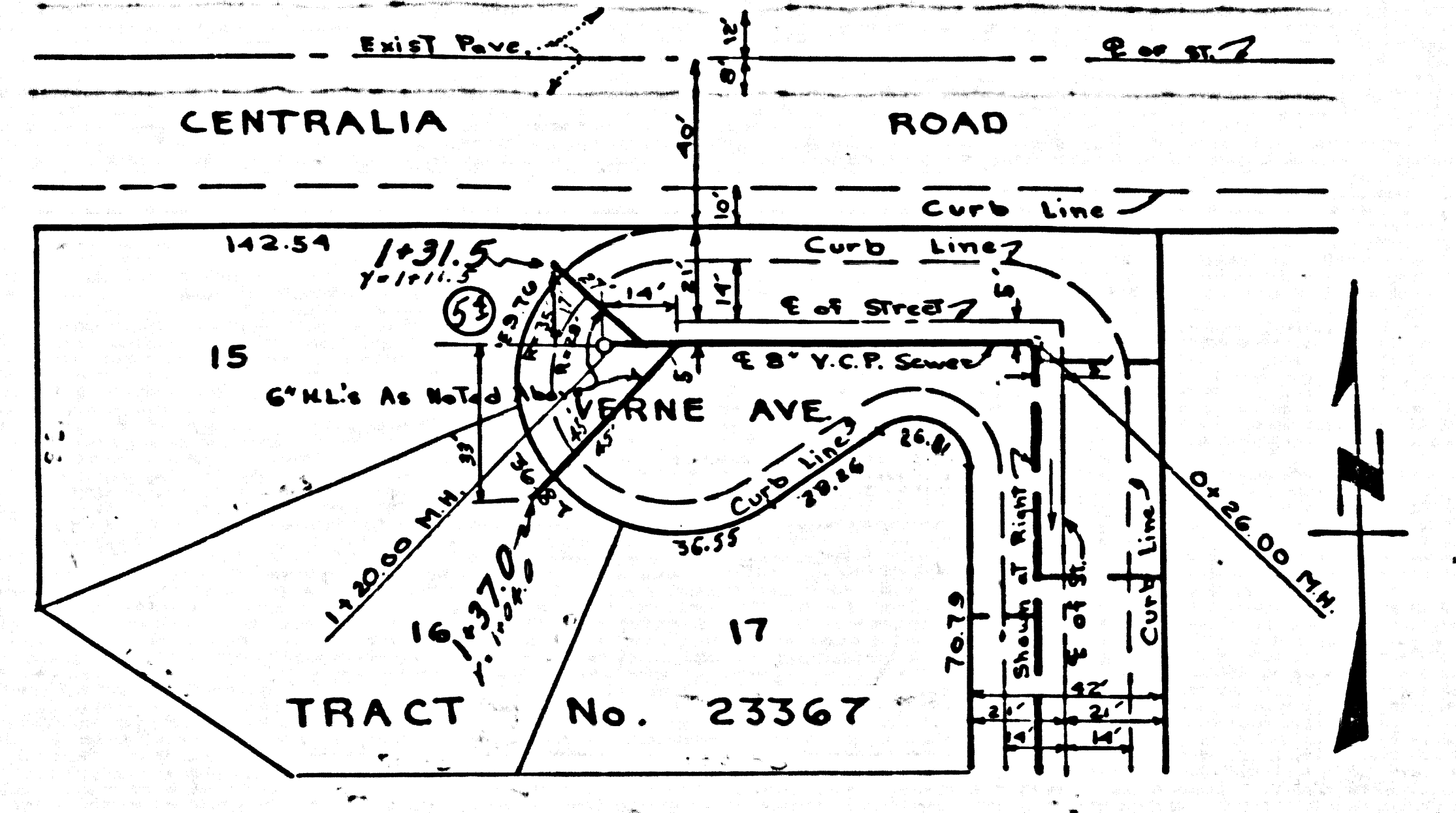
26,150

ON 25.00' J.C. CONNECTIONS IN THIS AREA CONSTRUCT BASE PER DETAIL ON PAGE 4 B.

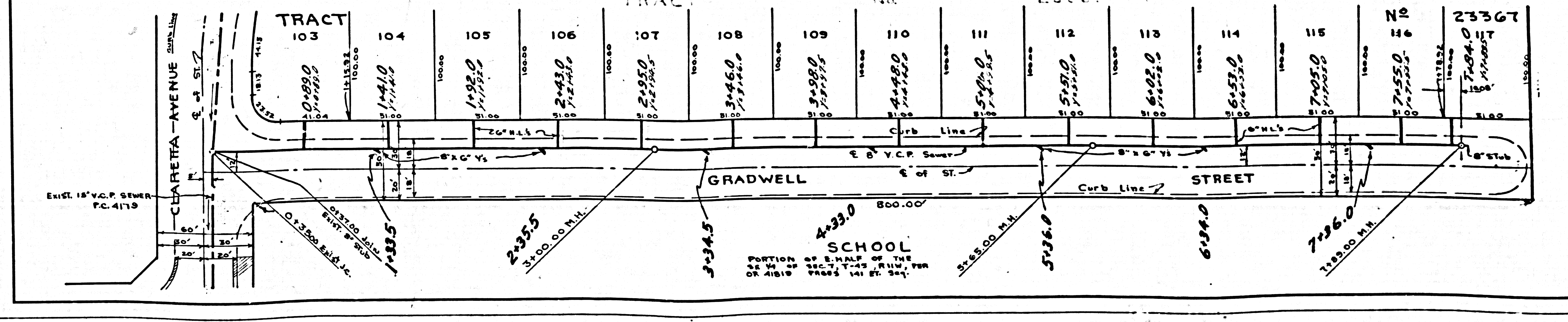
7684-57



(A) 26,151
NO CHARGE FOR CONNECTIONS



(A) 26,152
NO CHARGE FOR CONNECTIONS



TRAC 1

S3321

BC 4397