

PUENTE BLDG. DIST. NO. 2

PROFILE ALIGNMENT AND GRADE OF **P.C. 4401B**
SANITARY SEWERS PAGE 1
 TO BE CONSTRUCTED IN
DACONA AVENUE (25,008)
 AND
SANITARY SEWER RIGHTS OF WAY
PRIVATE CONTRACT NO. 4401B

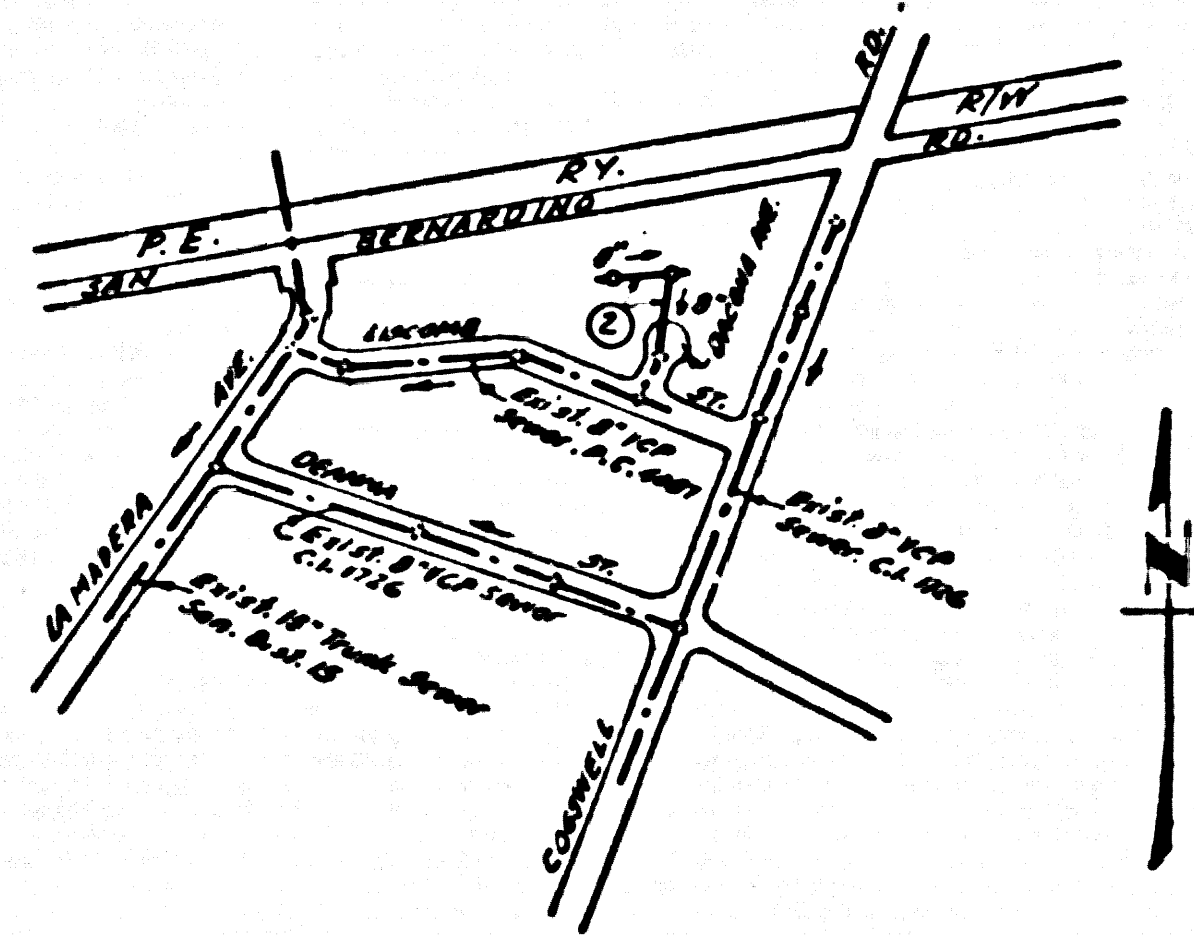
W.S. 46
 1 SHEET, 2 PAGES
 SCALE: VERT. 1" = 4'
 HORIZ. 1" = 40' APRIL, 1957
 PREPARED IN THE OFFICES OF
F.A. COGSWELL

UNDER THE SUPERVISION OF *W. W. Smith*
 REG. C. E. NO. 7880
 FOR LEGAL'D SEE PLAN NO. S-A-64

- NOTES:
- PROVIDE STAKES ON THE PROPERTY LINE OR PROPERTY LINES PRODUCED AT RIGHT ANGLES TO THE SEWER LINE AT THE CENTER LINE OF EACH MANHOLE.
 - NO REPRESENTATIVE OF THE COUNTY ENGINEER WILL SURVEY OR LAYOUT ANY PORTION OF THE WORK.
 - THE OWNER OR HIS AUTHORIZED REPRESENTATIVE SHALL FURNISH THE COUNTY ENGINEER WITH GRADE SHEETS AND STATIONING PLANNED MARKERS. ANY CHANGE IN LOCATION SHALL BE REQUESTED IN WRITING BY THE OWNER OR HIS REPRESENTATIVE.
 - NO REVISIONS SHALL BE MADE IN THESE PLANS WITHOUT THE APPROVAL OF THE COUNTY ENGINEER.
 - USE STANDARD MANHOLE FRAMES AND COVERS, S.A. 117, SLOPE: AS SHOWN.
 - USE STANDARD STRENGTH PIPE SLOPE: AS SHOWN.
 - USE CEMENT MORTAR FOR ALL VITRIFIED CLAY PIPE JOINTS.
 - RESURFACE ALL TRENCH WITHIN RAVES TO MEET L. A. COUNTY ROAD DEPT., OR CALIF. STATE HIGHWAY DEPT. REQUIREMENTS IN ACCORDANCE WITH FRAMES.
 - INDICATE FOUR FEET OF SEWER AT POINTS OF INTERFERENCE WITH POLES, S.A. 119.
 - HOUSE LATERALS TO BE CONSTRUCTED WITHIN PROPERTY LINES. SEE DRAWING CURE GRASS SLOPE: AS SHOWN.
 - ALL STRUCTURES SHALL BE BRICK SEWER STRUCTURE, S.A. 118, SLOPE: AS SHOWN.
 - FOR ALLOWABLE LEAKAGE TEST USE FORMULA NO. 1, S.P.C.E., SEC. 89.
 - MANHOLE TOPS IN UNIMPROVED RIGHTS-OF-WAY TO BE LEVEL WITH SURFACING GRADE.

NO CHARGE FOR CONNECTIONS
CPB 5/27

B.M. 5G-138 (corrected) Elev. 300.566
 1/2" N. of S. edge of pavement on San Bernardino Rd. and 330' W. of La Nodera Ave.



INDEX MAP
 P.C. 4401B
 Scale - 1" = 600'

NOTE:
 GRADES TO WHICH THE IMPROVEMENT IS TO BE CONSTRUCTED ARE SHOWN ON PLANS AND PROFILES. GRADE POINTS FOR TOP OF CURB, CENTER LINE OF STREETS, OR CENTER LINE OF ALLEYS ARE SHOWN BY CIRCLES ON PROFILES. AT ALL POINTS BETWEEN DESIGNATED POINTS THE GRADE SHALL BE ESTABLISHED SO AS TO COMPARE TO A STRAIGHT LINE DRAWN BETWEEN SAID DESIGNATED POINTS.
 ELEVATIONS ARE IN FEET ABOVE U.S.C. & G.S. MEAN LEVEL DATUM OF 1929.
 THIS DRAWING AND THE DATA HEREON ARE HEREBY MADE A PART OF THE SPECIFICATIONS.
 BEFORE WORK CAN BE STARTED, THE CONTRACTOR MUST OBTAIN A PERMIT TO EXCAVATE IN COUNTY STREETS FROM THE L. A. COUNTY ROAD DEPT., 108 W. 2ND ST. AND MAKE A DEPOSIT WITH THE COUNTY ENGINEER, ROOM 254 PAN AMERICAN BUILDING, 315 SO. BROADWAY SUBJECT TO COVER THE COST OF CONSTRUCTION INSPECTION AND RECORD PLANS.
 APPROVAL OF THIS PLAN BY THE COUNTY OF LOS ANGELES DOES NOT CONSTITUTE A REPRESENTATION AS TO THE ACCURACY OF THE LOCATION OR OF THE EXISTENCE OR NON-EXISTENCE OF ANY UNDERGROUND UTILITY PIPE, OR STRUCTURE WITHIN THE LIMITS OF THIS PROJECT. THIS NOTE APPLIES TO ALL PAGES.
 IF WORK IS TO BE DONE IN A STATE HIGHWAY, A PERMIT MUST BE OBTAINED FROM THE STATE OF CALIFORNIA, DIVISION OF HIGHWAYS, 120 SOUTH SPRING STREET.

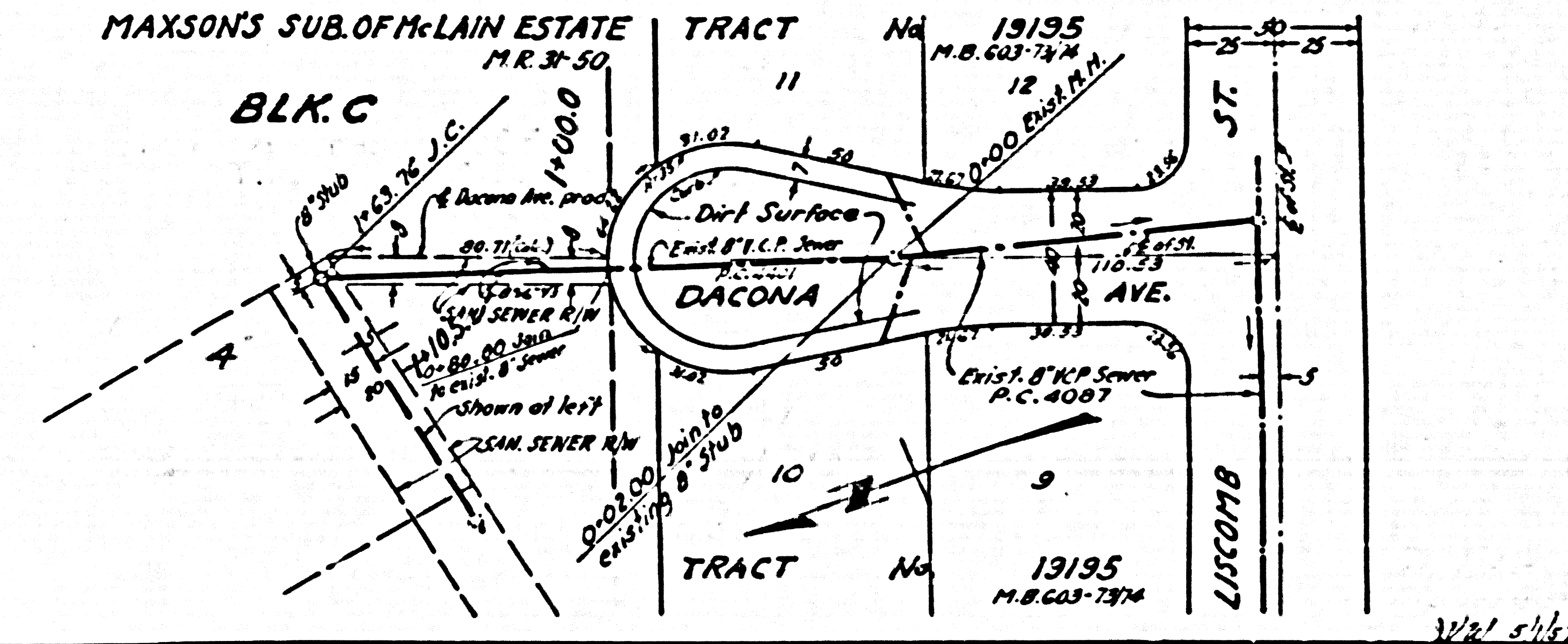
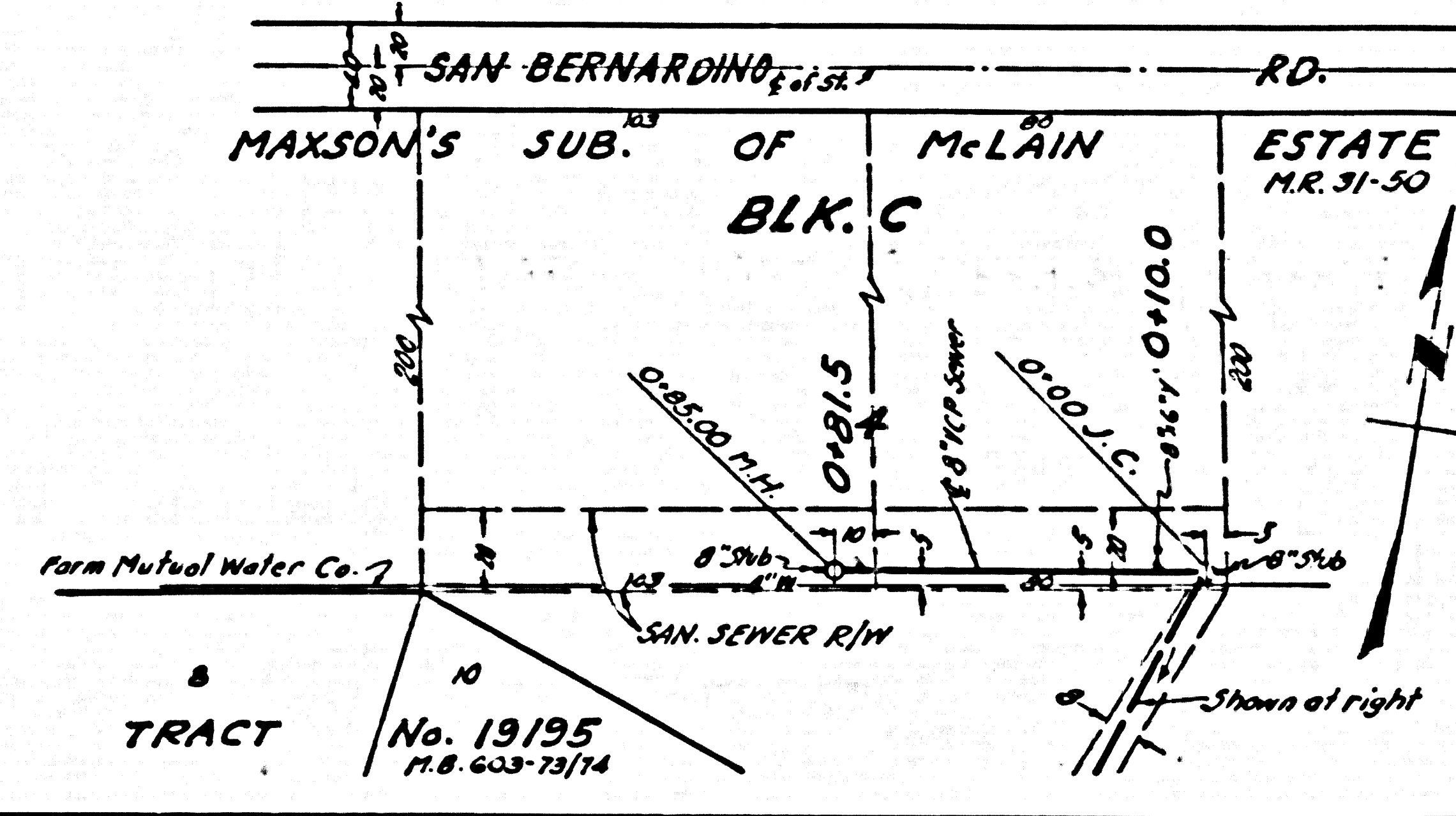
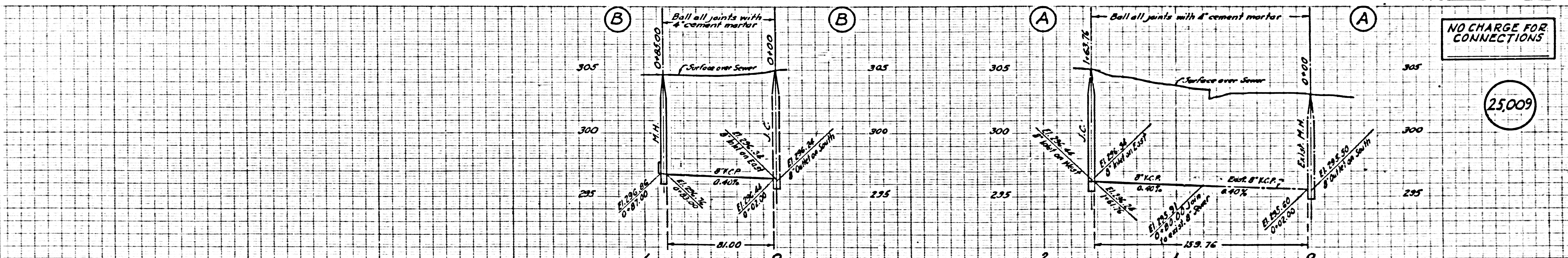
COUNTY OF LOS ANGELES, CALIFORNIA

APPROVED, JOHN A. LAMBE, COUNTY ENGINEER
 APPROVED, A. M. RAWIN, CHIEF ENGINEER
 CO. SAN. DIST. NO. 48
 BY *J. A. Lambe* (Signature)
 BY *A. M. Rawin* (Signature)
 CHECKED BY *Carl H. ...* (Signature)
 OFFICE OF COUNTY ENGINEER, REG. C. E. NO. 637

P.C. 4401B PAGE 2

NO CHARGE FOR CONNECTIONS

(25,009)



DACOMA AVE. & SANITARY SEWERS R/W

P.C. 4401B