

LANCASTER BLDG. DIST. NO. 8

PROFILE ALIGNMENT AND GRADE OF P.C. 4405
 SANITARY SEWERS PAGE 1
 TO BE CONSTRUCTED IN
 TRACT NO. 21328

PRIVATE CONTRACT NO. 4405

W.S. 7

4 SHEETS; 8 PAGES

SCALE: VERT. 1" = 4' APRIL, 1957

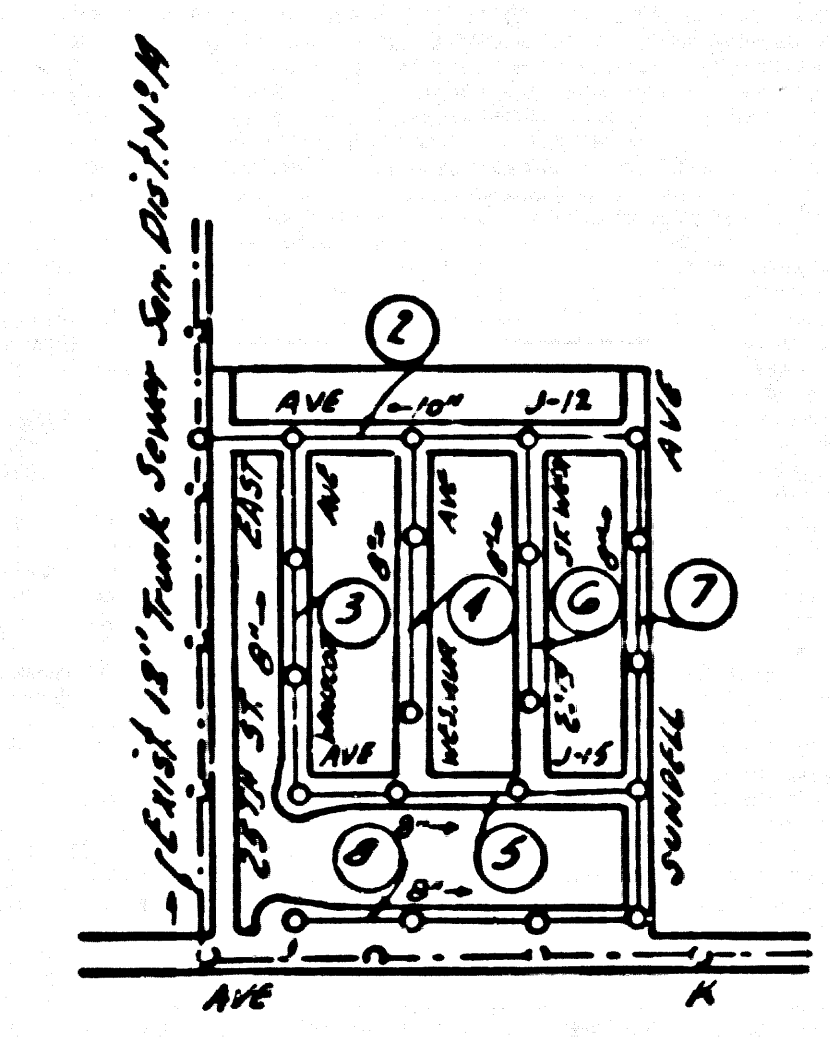
PREPARED IN THE OFFICES OF

R.L. STUCKEY CO.

REG. C. E. NO. 6067

FOR LEGEND SEE PLAN NO. S-A-64

B.M. U.S. 3171 454.5 El. 2325.041 Abt. 2 1/2 mi. West along State Hwy 128 from the Post Office at Lancaster, L.A. County, at the king of a N.E.S. dirt road, 36' N of the E of the Hwy, 32 1/2' of the E of the road & B.S. N.E. of Feb. 20, 1928. A U.S.G.S. 5' d. disk stamped "R.R. 37 1928" set in top of conc. post.



INDEX MAP
 TRACT NO. 21328
 P.C. 4405

2 new Tract Map
 30' Section of Plan
 5' Section of County
 S. Mount. Fee \$260.00

- NOTES:
- PROVIDE STAKES ON THE PROPERTY LINE OR PROPERTY LINES PRODUCED AT RIGHT ANGLES TO THE SEWER LINE AT THE CENTER LINE OF EACH MANHOLE.
 - NO REPRESENTATIVE OF THE COUNTY ENGINEER WILL SURVEY OR LAYOUT ANY PORTION OF THE WORK.
 - THE OWNER OR HIS AUTHORIZED REPRESENTATIVE SHALL FURNISH THE COUNTY ENGINEER WITH GRADE SHEETS AND STATION FOR ALL HOUSE LATERALS AND Y BRANCHES AND SHALL PROVIDE STAKES FOR THEM AT THEIR PROPER LOCATIONS WITH STATIONING PLAINLY MARKED. ANY CHANGE IN LOCATION SHALL BE REQUESTED BY WRITING BY THE OWNER OR HIS REPRESENTATIVE.
 - NO REVISIONS SHALL BE MADE IN THESE PLANS WITHOUT THE APPROVAL OF THE COUNTY ENGINEER.
 - USE STANDARD MANHOLE FRAMES AND COVERS, S-A-117, EXCEPT AS NOTED.
 - USE STANDARD MANHOLE FRAMES AND COVERS, S-A-117, EXCEPT AS NOTED.
 - USE CEMENT MORTAR FOR ALL VITRIFIED CLAY PIPE JOINTS.
 - RESURFACE ALL TRENCH WITHIN PAVED AREA TO MEET L. A. COUNTY ROAD DEPT., OR CALIF. STATE HIGHWAY DEPT., REQUIREMENTS IN ACCORDANCE WITH PERMITS.
 - ENCASE FOUR FEET OF SEWER AT POINTS OF INTERFERENCE WITH POLES, S-A-119.
 - HOUSE LATERALS TO BE CONSTRUCTED WITH INVERTS AT PROPERTY LINE 6 FEET BELOW CURB GRADE EXCEPT AS NOTED.
 - ALL STRUCTURES SHALL BE BRICK SEWER STRUCTURES, S-A-194, EXCEPT AS NOTED.
 - FOR ALLOWABLE LEAKAGE TEST USE FORMULA NO. 1 SPEC'S, SPC. 56.
 - MANHOLE TOPS IN UNIMPROVED RIGHTS-OF-WAY TO BE 6" ABOVE FINISHED GRADE.
 - The Private Engineer is to furnish the House Lateral depth at the property line below the top of curb elevation for each House Lateral, on the Grade Sheet.
 - Ball all joints with 4" cement mortar that are within 20 ft. of all property lines.

NO CHARGE FOR CONNECTIONS

NOTE: GRADES TO WHICH THIS IMPROVEMENT IS TO BE CONSTRUCTED ARE SHOWN ON PLANS AND PROFILES. GRADE POINTS FOR TOP OF CURBS, CENTER LINE OF STREETS, OR CENTER LINE OF ALLEYS ARE SHOWN BY CIRCLES ON PROFILES AT ALL POINTS BETWEEN DESIGNATED POINTS THE GRADE SHALL BE ESTABLISHED TO AS TO CONFORM TO A STRAIGHT LINE DRAWN BETWEEN SAID DESIGNATED POINTS.

ELEVATIONS ARE IN FEET ABOVE U.S.C. & G.S. 228 LEVEL, DATUM OF 1929.

THIS DRAWING AND THE DATA HEREON ARE HEREBY MADE A PART OF THE SPECIFICATIONS.

WORK SHALL BE CONSTRUCTED ACCORDING TO SPECIFICATIONS ON FILE IN THE OFFICE OF THE COUNTY ENGINEER AND SHALL BE PROSECUTED ONLY IN THE PRESENCE OF THE COUNTY ENGINEER.

BEFORE WORK CAN BE STARTED, THE CONTRACTOR MUST OBTAIN A PERMIT TO EXCAVATE IN COUNTY STREETS FROM THE L. A. COUNTY ROAD DEPT., 128 W. 2ND ST. AND MAKE A DEPOSIT WITH THE COUNTY ENGINEER, ROOM 234 PAM AMERICAN BUILDING, 233 SO. BROADWAY SUFFICIENT TO COVER THE COST OF CONSTRUCTION INSPECTION AND SECOND PLANS.

APPROVAL OF THIS PLAN BY THE COUNTY OF LOS ANGELES DOES NOT CONSTITUTE A REPRESENTATION AS TO THE ACCURACY OF THE LOCATION OF OR THE EXISTENCE OR NON-EXISTENCE OF ANY UNDERGROUND UTILITY PIPE, OR STRUCTURE WITHIN THE LIMITS OF THIS PROJECT. THE NOTE APPLIES TO ALL PAGES.

IF WORK IS TO BE DONE IN A STATE HIGHWAY, A PERMIT MUST BE OBTAINED FROM THE STATE OF CALIFORNIA, DIVISION OF HIGHWAYS, 128 SOUTH SPRING STREET.

COUNTY OF LOS ANGELES, CALIFORNIA

APPROVED, JOHN A. LAMBE, COUNTY ENGINEER

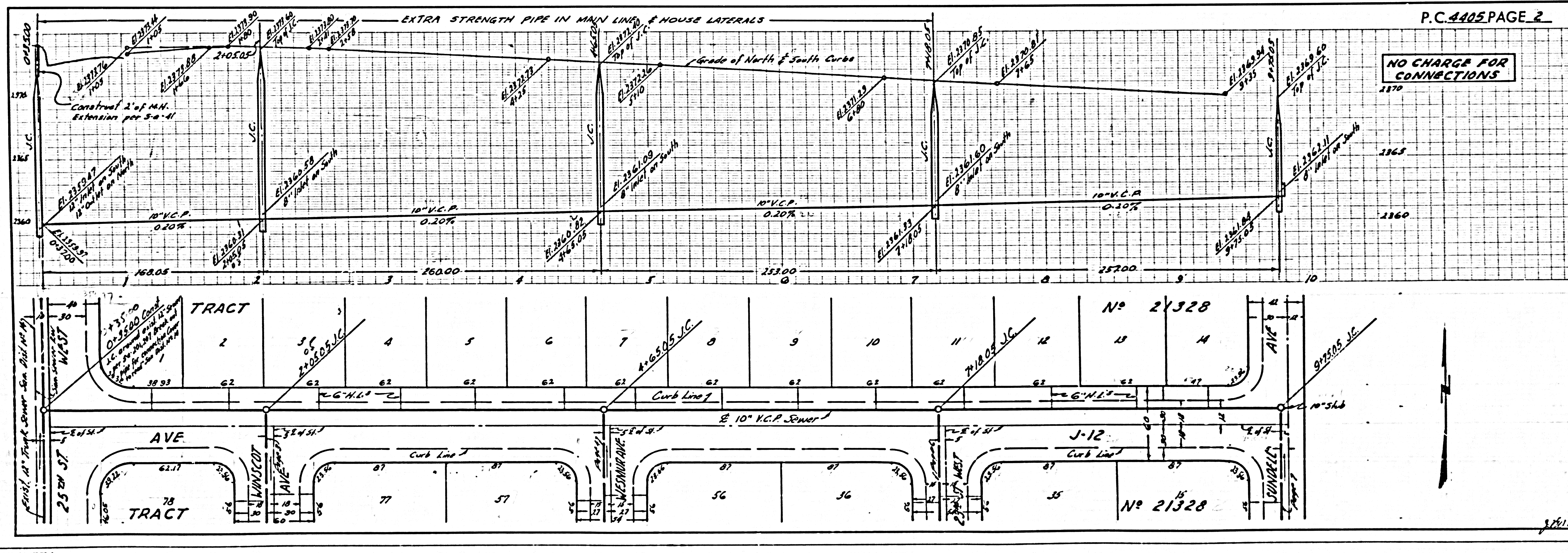
APPROVED, A. M. BAWN, CHIEF ENGINEER

BY _____ SANITATION ENGINEER

BY _____ OFFICE ENGINEER

CHECKED BY _____

OFFICE OF COUNTY ENGINEER, 516, C. E. BLDG.



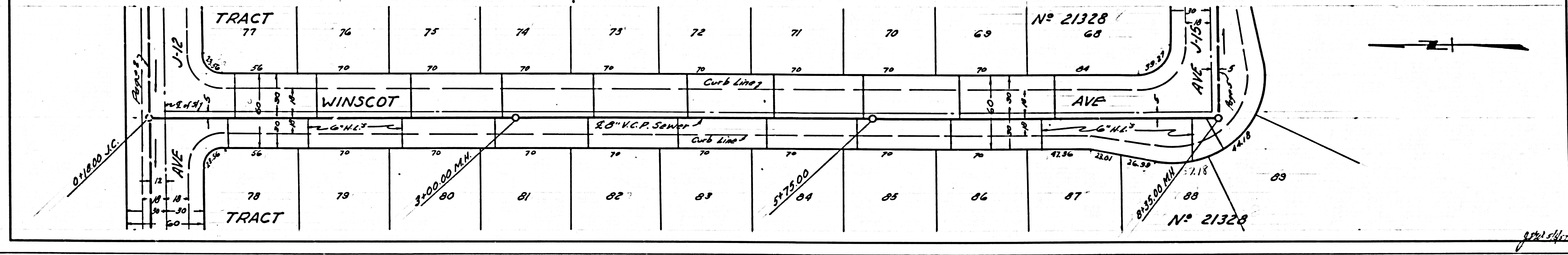
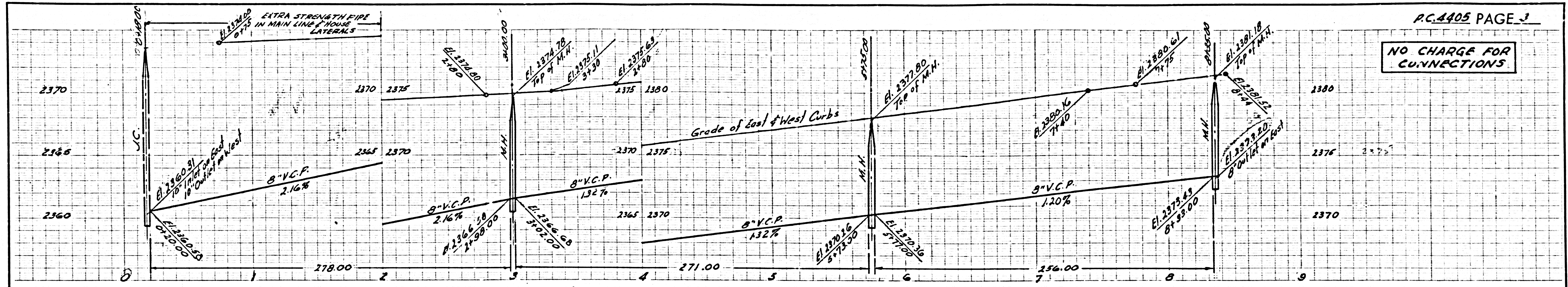
NO CHARGE FOR CONNECTIONS

P.C. 4405 PAGE 2

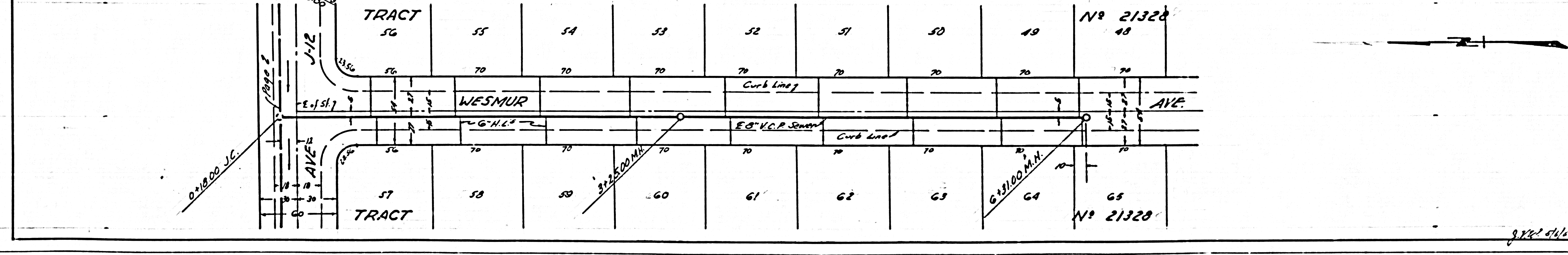
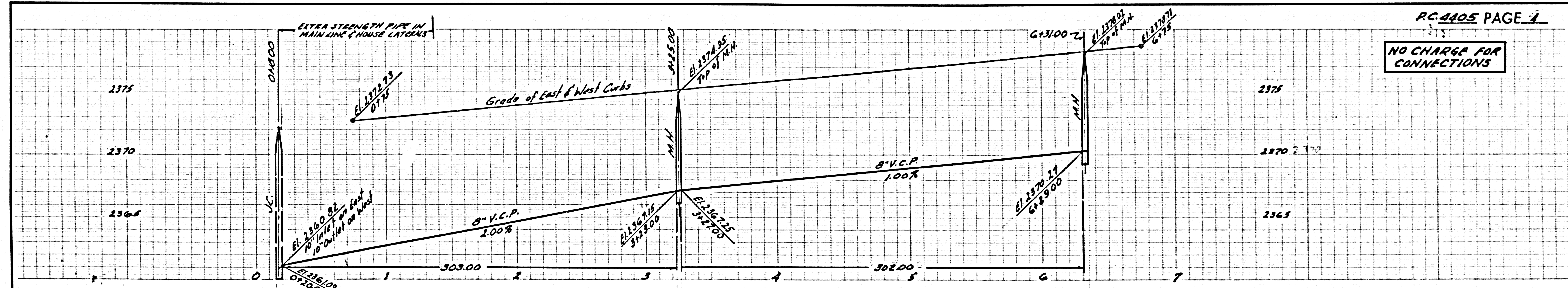
TRACT NO. 21328

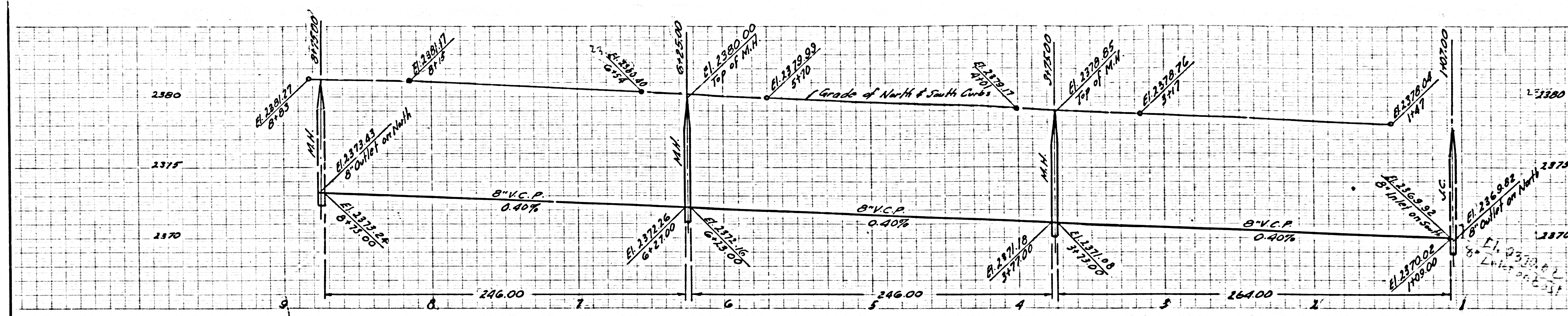
TRACT NO. 21328

NO CHARGE FOR CONNECTIONS

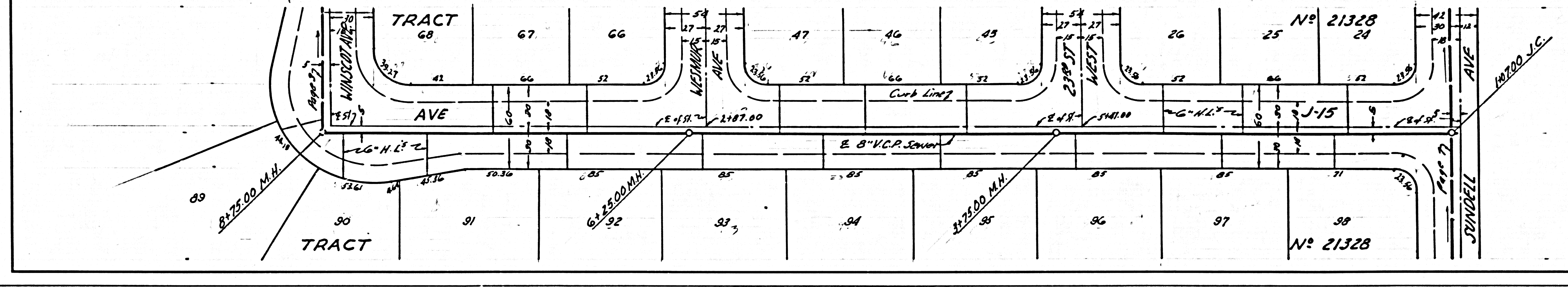


NO CHARGE FOR CONNECTIONS

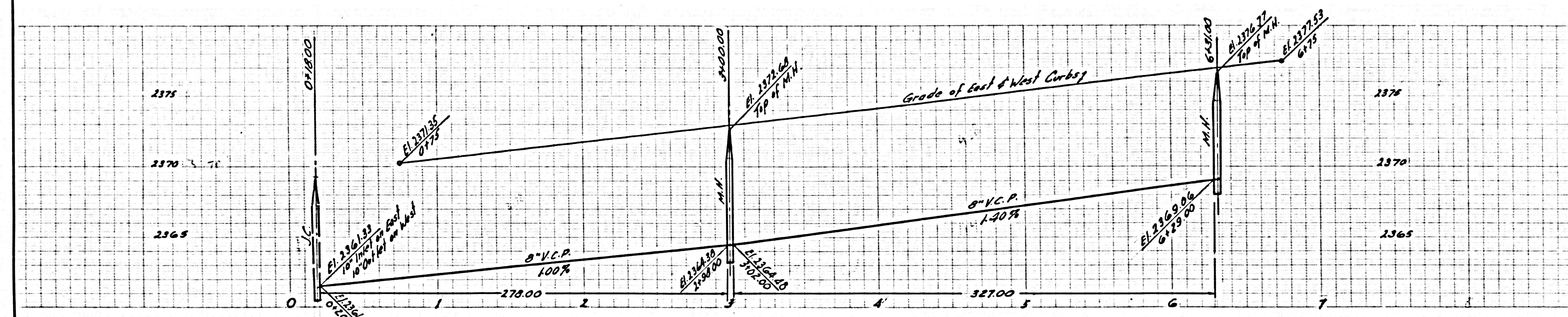




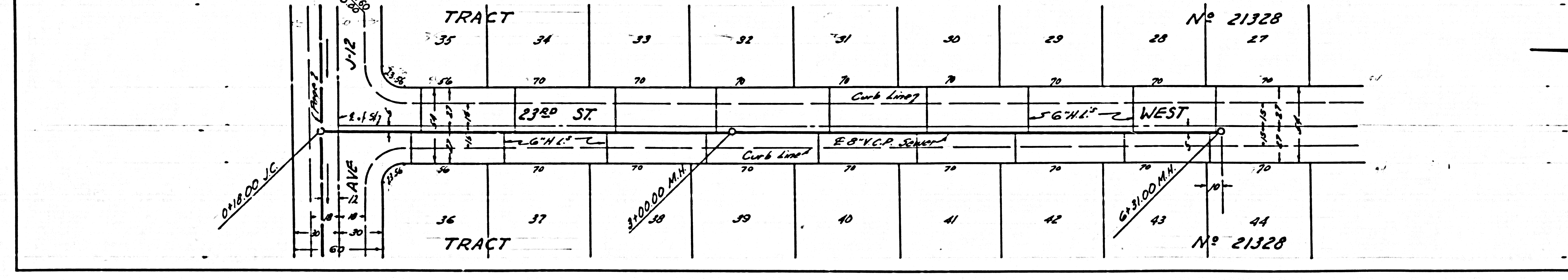
NO CHARGE FOR CONNECTIONS



grr/sbl/7



NO CHARGE FOR CONNECTIONS



grr/sbl/7

