

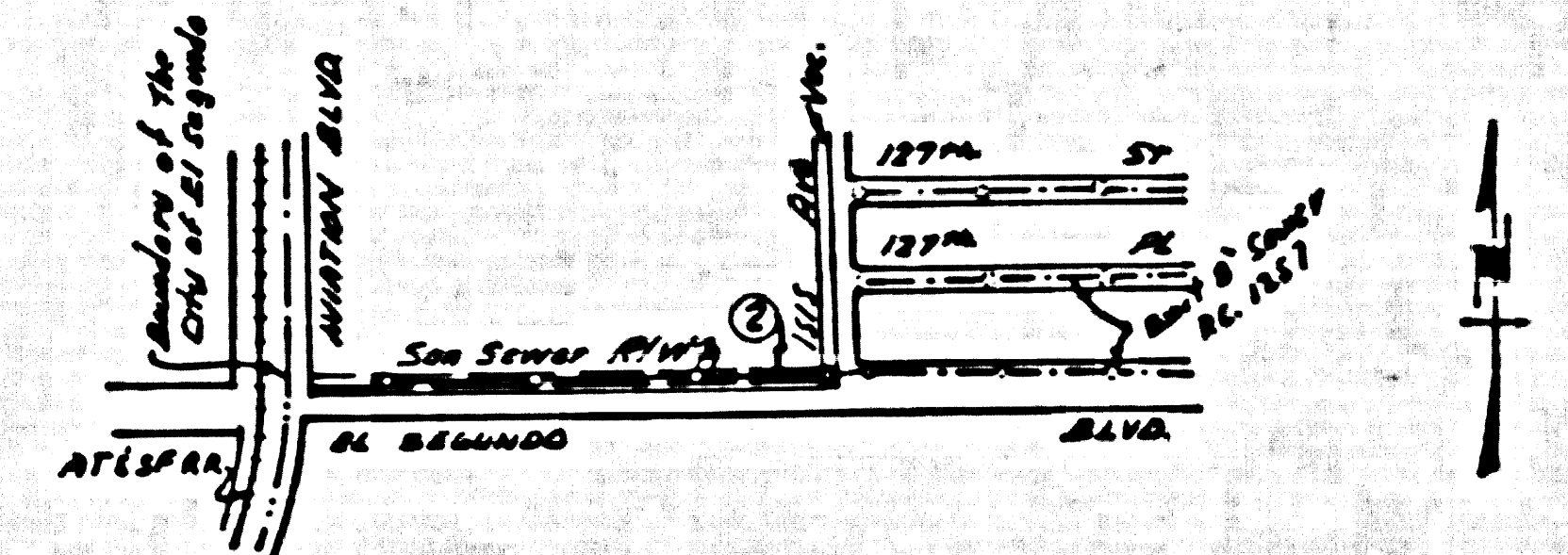
S.M. KV-16 Elev. 95.126  
 S. Side El Segundo Blvd & W of RR about  
 100' W of E of Aviation Blvd. Bk. Sak. & L. in  
 N.E. Cor. of base of R.R. Signal

**NO CHARGE FOR CONNECTIONS**  
*2/25/57*

**LENNOX BLDG. DIST. NO. 7**

- NOTES:  
 PROVIDE STAKES ON THE PROPERTY LINE OR PROPERTY LINES PRODUCED AT RIGHT ANGLES TO THE SEWER LINE AT THE CENTER LINE OF EACH MANHOLE.  
 NO REPRESENTATIVE OF THE COUNTY ENGINEER WILL SURVEY OR LAYOUT ANY PORTION OF THE WORK.  
 THE OWNER OR HIS AUTHORIZED REPRESENTATIVE SHALL FURNISH THE COUNTY ENGINEER WITH GRADE SHEETS AND STATION FOR ALL HOUSE LATERALS AND Y BRANCHES AND SHALL PROVIDE STAKES FOR THEM AT THEIR PROPER LOCATIONS WITH STATIONING PLAINLY MARKED. ANY CHANGE IN LOCATION SHALL BE REQUESTED IN WRITING BY THE OWNER OR HIS REPRESENTATIVE.  
 NO REVISIONS SHALL BE MADE IN THESE PLANS WITHOUT THE APPROVAL OF THE COUNTY ENGINEER.  
 1. USE STANDARD MANHOLE FRAMES AND COVERS, S.A-117, EXCEPT AS NOTED.  
 2. USE STANDARD STRENGTH PIPE EXCEPT AS NOTED.  
 3. USE CEMENT MORTAR FOR ALL WITHIN CLAY PIPE JOINTS.  
 4. RESURFACE ALL TRENCH WITHIN PAVED AREA TO MEET L. A. COUNTY ROAD DEPT., OR CALIF. STATE HIGHWAY DEPT. REQUIREMENTS IN ACCORDANCE WITH PERMITS.  
 5. ENCASE FOUR FEET OF SEWER AT POINTS OF INTERFERENCE WITH POLES, S.A-119.  
 6. INCURE EXTERIOR TO BE CONSTRUCTED WITH INVERTS AT PROPERTY LINE \_\_\_\_\_ FEET BELOW CURB OR 2' EXCEPT AS NOTED.  
 7. ALL STRUCTURES SHALL BE BUILT SEWER STRUCTURE, S.A-194, EXCEPT AS NOTED.  
 8. FOR ALLOWABLE LEAKAGE TEST USE FORMULA NO. \_\_\_\_\_ SPEC. SEC. III.  
 9. MANHOLE TOPS IN UNIMPROVED RIGHTS-OF-WAY TO BE 6" ABOVE FINISHED GRADE.

NOTE:  
 THE CONTRACTOR SHALL NOTIFY THE CONSTRUCTION AND STORM DRAIN DIVISION BY TELEPHONE, MADISON 9-4747, EXT. 382, AT LEAST 24 HOURS BEFORE STARTING ANY WORK UNDER THIS CONTRACT.



INDEX MAP  
 P.C. 4406  
 scale 1" = 600'

PROFILE ALIGNMENT AND GRADE OF **P.C. 4406**  
**SANITARY SEWERS PAGE 1**  
 TO BE CONSTRUCTED IN  
**EL SEGUNDO BOULEVARD (25,187)**

**PRIVATE CONTRACT NO. 4406**

W.S. 25  
 1 SHEET OF 2 PAGES

DATE: *10-11-57* **SEPT., 1957**  
 PREPARED IN THE OFFICES OF  
**RALPH W. BOGGE**

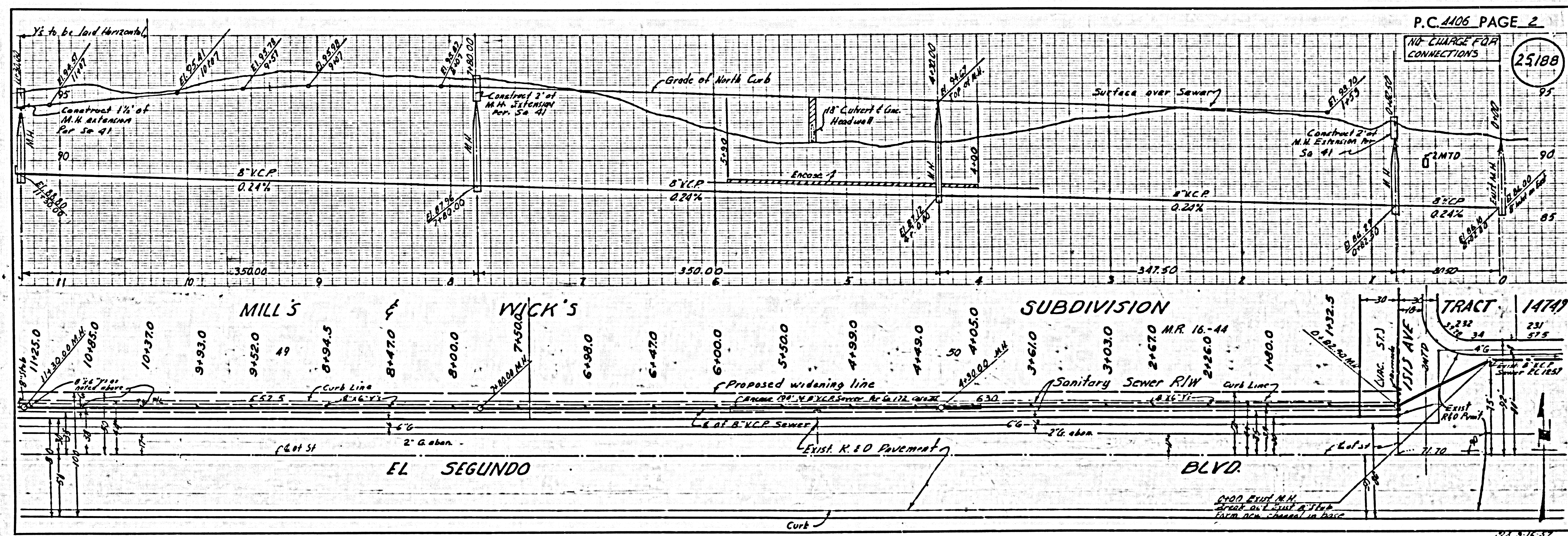
By *J.R. Edwards*  
 REG. C. E. NO. 1748  
 FOR LEGEND SEE PLAN NO. S-A-61

NOTE:  
 GRADES TO WHICH THIS IMPROVEMENT IS TO BE CONSTRUCTED ARE SHOWN ON PLANS AND PROFILES. GRADE POINTS FOR TOP OF CURB, CENTER LINE OF STREET, OR CENTER LINE OF ALLEY ARE SHOWN BY CIRCLES ON PROFILES. AT ALL POINTS BETWEEN DESIGNATED POINTS THE GRADE SHALL BE ESTABLISHED AS TO CONFORM TO A STRAIGHT LINE DRAWN BETWEEN SAID DESIGNATED POINTS.  
 ELEVATIONS ARE IN FEET ABOVE U.S.C.F.S. SEA LEVEL DATUM OF 1929.  
 THIS DRAWING AND THE DATA HEREON ARE HEREBY MADE A PART OF THE SPECIFICATIONS.  
 WORK SHALL BE CONSTRUCTED ACCORDING TO SPECIFICATIONS ON FILE IN THE OFFICE OF THE COUNTY ENGINEER AND SHALL BE PROSECUTED ONLY IN THE PRESENCE OF THE COUNTY ENGINEER.  
 BEFORE WORK CAN BE STARTED, THE CONTRACTOR MUST OBTAIN A PERMIT TO EXCAVATE IN COUNTY STREETS FROM THE L. A. COUNTY ROAD DEPT., 100 W. 5TH ST. AND MAKE A DEPOSIT WITH THE COUNTY ENGINEER, ROOM 334 PAN AMERICAN BUILDING, 330 SO. HOUSTON AVENUE TO COVER THE COST OF CONSTRUCTION INSPECTION AND RECORD PLANS.  
 APPROVAL OF THIS PLAN BY THE COUNTY OF LOS ANGELES DOES NOT CONSTITUTE A REPRESENTATION AS TO THE ACCURACY OF THE LOCATION OF OR THE EXISTENCE OR NON-EXISTENCE OF ANY UNDERGROUND UTILITY PIPE, OR STRUCTURE WITHIN THE LIMITS OF THE PROJECT. THIS NOTE APPLIES TO ALL PAGES.  
 IF WORK IS TO BE DONE IN A STATE HIGHWAY, A PERMIT MUST BE OBTAINED FROM THE STATE OF CALIFORNIA, DIVISION OF HIGHWAYS, 120 SOUTH SPRING STREET.

COUNTY OF LOS ANGELES, CALIFORNIA

APPROVED, JOHN A. LAMBE, COUNTY ENGINEER  
 APPROVED, A. M. RAWN, CHIEF ENGINEER  
 COUNTY BUS. NO. 5  
 BY *John A. Lambe* BY *A. M. Rawn*  
 SUPERVISOR OFFICE ENGINEER  
 CHECKED BY *St. Dick* 10-11-57  
 OFFICE OF COUNTY ENGINEER, REG. C. E. NO. 3416

APPROVED BY  
 INDUSTRIAL DIST. DIVISION  
 BY *Clifton V. Peck* DATE *10/16/57*



P.C. 4406 PAGE 2

**NO CHARGE FOR CONNECTIONS**  
 (25,188)