

PALMDALE BLDG. DIST. NO. 8.1

PROFILE ALIGNMENT AND GRADE OF P.C. 4408
SANITARY SEWERS PAGE 1

TO BE CONSTRUCTED IN
AVE R-12 & MAHONIA AVE
TRACT NO 18000
NB 471-2-4

PRIVATE CONTRACT NO. 4408

W.S. 65

2 SHEETS, 1 PAGES

SCALE: VERT. 1"=4' APRIL, 1957

PREPARED IN THE OFFICES OF

R.L. STUCKEY CO.

R.L. Stuckey
REG. C.E. NO. 6067

FOR LEGEND SEE PLAN NO. S-A-64

GRADES TO WHICH THIS IMPROVEMENT IS TO BE CONSTRUCTED ARE SHOWN ON PLANS AND PROFILES. GRADE POINTS FOR TOP OF CURB, CENTER LINE OF STREETS, OR CENTER LINE OF ALLEYS ARE SHOWN BY CIRCLES ON PROFILES AT ALL POINTS BETWEEN DESIGNATED POINTS. THE GRADE SHALL BE ESTABLISHED SO AS TO CONFORM TO A STRAIGHT LINE DRAWN BETWEEN SAID DESIGNATED POINTS.

ELEVATIONS ARE IN FEET ABOVE U.S.C. & G.S. 1929. GRADES ARE SHOWN ON THIS SHEET AS PART OF THE SPECIFICATIONS. WORK SHALL BE CONSTRUCTED ACCORDING TO SPECIFICATIONS ON FILE IN THE OFFICE OF THE COUNTY ENGINEER AND SHALL BE INSPECTED ONLY IN THE PRESENCE OF THE COUNTY ENGINEER.

BEFORE WORK CAN BE STARTED, THE CONTRACTOR MUST OBTAIN A PERMIT TO EXCAVATE IN COUNTY STREETS FROM THE L.A. COUNTY ROAD DEPT., 124 W. 2ND ST. AND MAKE A DEPOSIT WITH THE COUNTY ENGINEER, ROOM 204 FARM ANGLEMAN BLDG., 333 SO. BROADWAY SUFFICIENT TO COVER THE COST OF CONSTRUCTION INSPECTION AND RECORD PLANS.

APPROVAL OF THIS PLAN BY THE COUNTY OF LOS ANGELES DOES NOT CONSTITUTE A REPRESENTATION AS TO THE ACCURACY OF THE LOCATION OF OR THE EXISTENCE OR NON-EXISTENCE OF ANY UNDERGROUND UTILITY PIPE, OR STRUCTURE WITHIN THE LIMITS OF THIS PROJECT. THIS NOTE APPLIES TO ALL PAGES.

IF WORK IS TO BE DONE IN A STATE HIGHWAY, A PERMIT MUST BE OBTAINED FROM THE STATE OF CALIFORNIA, DIVISION OF HIGHWAYS, 120 SOUTH SPRING STREET.

COUNTY OF LOS ANGELES, CALIFORNIA

APPROVED, JOHN A. LAMBE, COUNTY ENGINEER

APPROVED, A. M. RAWL, CHIEF ENGINEER

BY *A.P. Collins*
SANITATION ENGINEER

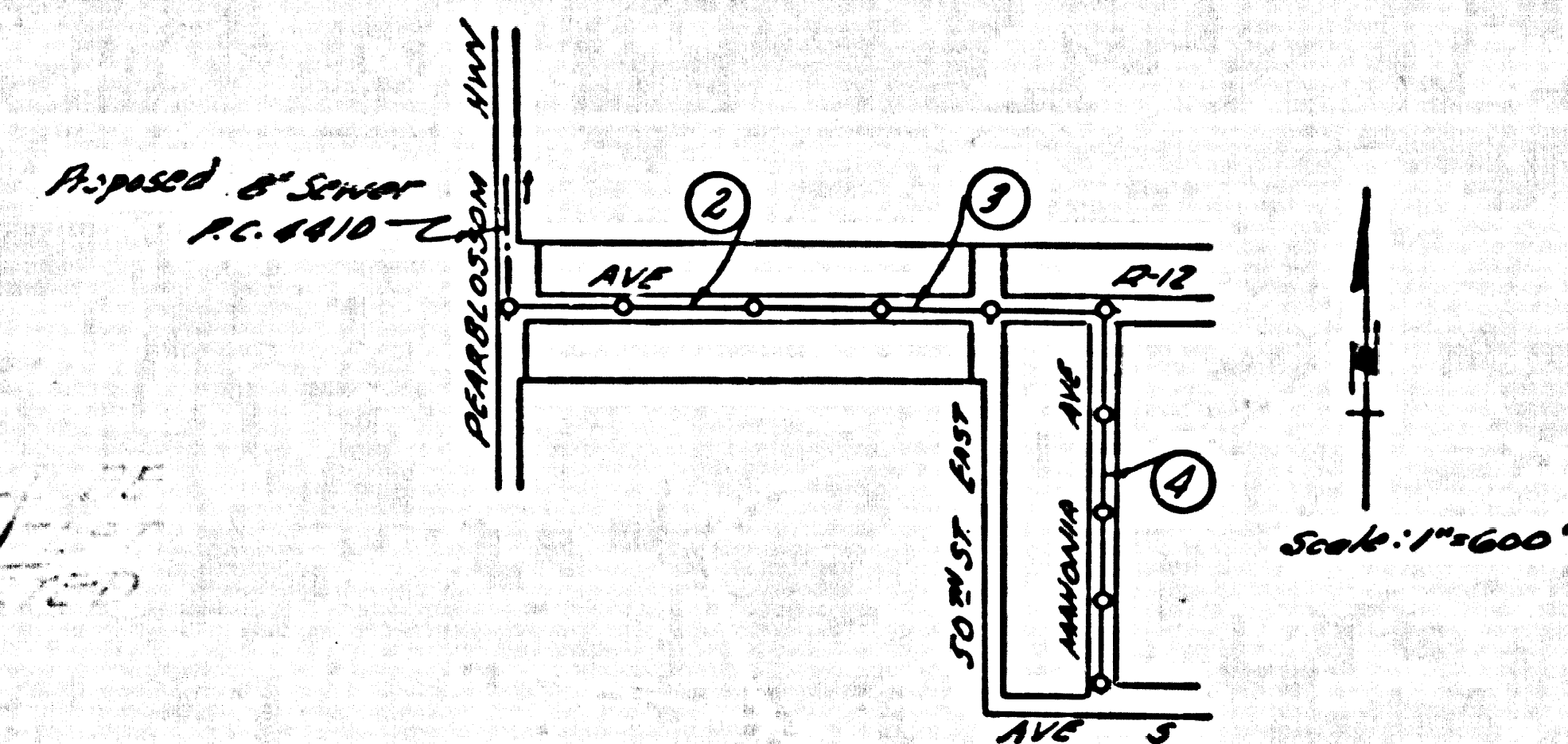
BY *A.M. Rawl*
CHIEF ENGINEER

CHECKED BY *R.K. Onda* 4-11-57

OFFICE OF COUNTY ENGINEER, REG. C.E. NO. 9486

- NOTES:**
- PROVIDE STAKES ON THE PROPERTY LINE OR PROPERTY LINES PRODUCED AT RIGHT ANGLES TO THE SEWER LINE AT THE CENTER LINE OF EACH MANHOLE.
 - NO REPRESENTATIVE OF THE COUNTY ENGINEER WILL SURVEY OR LAYOUT ANY PORTION OF THE WORK.
 - THE OWNER OR HIS AUTHORIZED REPRESENTATIVE SHALL FURNISH THE COUNTY ENGINEER WITH GRADE SHEETS AND STATIONING FOR ALL HOUSE LATERALS AND V BRANCHES AND SHALL PROVIDE STAKES FOR THEM AT THEIR PROPER LOCATIONS WITH STATIONING AND PLANT NUMBER. ANY CHANGE IN LOCATION SHALL BE REQUESTED BY WRITING BY THE OWNER OR HIS REPRESENTATIVE.
 - NO REVISIONS SHALL BE MADE IN THESE PLANS WITHOUT THE APPROVAL OF THE COUNTY ENGINEER.
 - USE STANDARD MANHOLE FRAMES AND COVERS, S.A-117, EXCEPT AS NOTED.
 - USE STANDARD STRENGTH PIPE EXCEPT AS NOTED.
 - USE CEMENT MORTAR FOR ALL WITHIN CLAY PIPE JOINTS.
 - RESURFACE ALL TRENCH WITHIN PAVED AREA TO MEET L.A. COUNTY ROAD DEPT., OR CALIF. STATE HIGHWAY DEPT. REQUIREMENTS IN ACCORDANCE WITH PERMITS.
 - ENCASE FOUR FEET OF SEWER AT POINTS OF INTERFERENCE WITH POLES, S.A-119.
 - HOUSE LATERALS TO BE CONSTRUCTED 1' TO 2' ABOVE AS PROPERTY LINE, 6" JUST BELOW CURB GRADE EXCEPT AS NOTED.
 - ALL STRUCTURES SHALL BE BRICK SEWER STRUCTURE, S.A-194, EXCEPT AS NOTED.
 - FOR ALLOWABLE LEAKAGE TEST USE FORMULA NO. 1 SPEC. SEC. II.
 - MANHOLE TOPS IN UNIMPROVED SHOWS-OF-WAY TO BE 6" ABOVE FINISHED GRADE.
 - Ball all pipe joints with 4" cement mortar that are within 20' of all property lines.
 - The Private Engineer is to furnish the house lateral depth at the property line below the top of curb elevation for each house lateral, on the grade sheet.

B.M. U.S.C.S. 21 2616 289 57 S. of E. of Apple Blossom Hwy (Palmdale Blvd.), 58' E. of E. of Pear Blossom Hwy (47th St. E.) in top of conc post, a bronze tablet stamped L.S. 25-1929



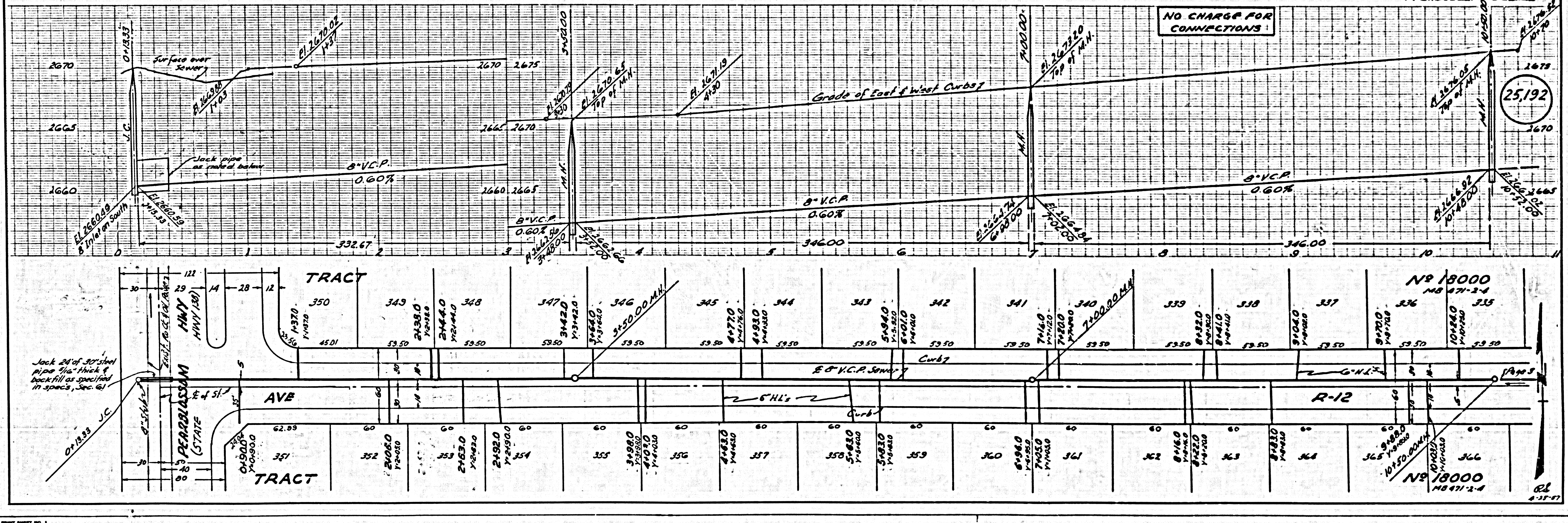
INDEX MAP
 R.C. 4408
 TRACT NO 18000

NO CHARGE FOR CONNECTIONS
Expires 4-26-57

NOTE:
 NO CONNECTIONS WILL BE PERMITTED UNTIL OUTLET SEWER IS CONSTRUCTED AND ACCEPTED. CALL MAIN OFFICE

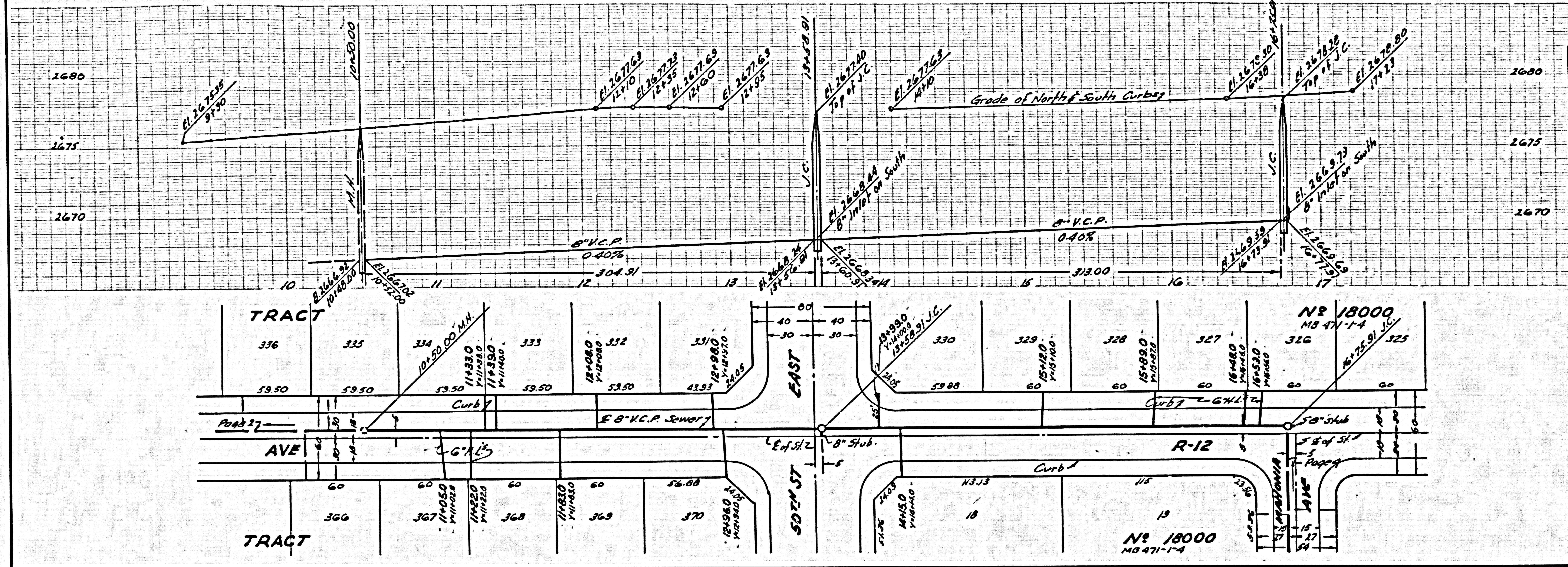
No Objection

P.C. 4408 PAGE 2



NO CHARGE FOR CONNECTIONS

25,193



NO CHARGE FOR CONNECTIONS

25,194

