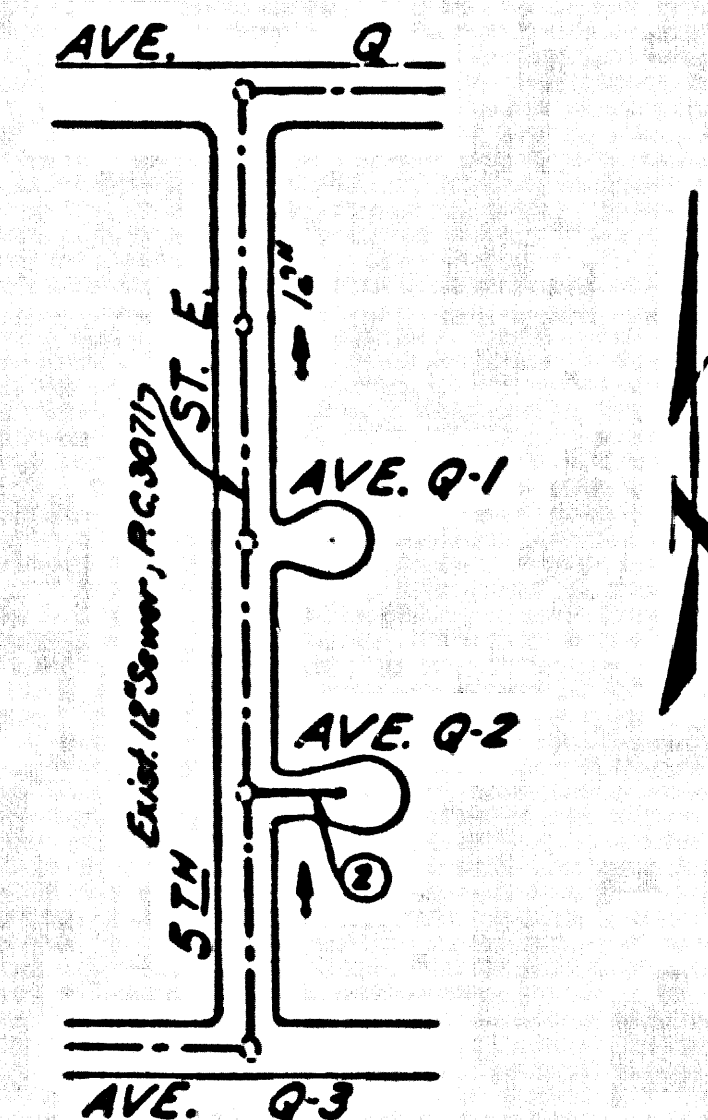


B.M.-A.V.-47, Elev. 2670.319, C.S.F.B. 1752 Pg. 121,
 Intersection of 6th St. E. & Ave. R, 1 1/2" I.P.
 4" Cl. Spk. in Conc. in well, 8" down.



INDEX MAP
 SCALE 1"=300'
 P.C. 4411

PALMDALE BLDG. DIST. NO. 81

NOTE:
 PROVIDE STAKES ON THE PROPERTY LINE OR PROPERTY LINES PRODUCED AT RIGHT ANGLES TO THE SEWER LINE AT THE CENTER LINE OF EACH MANHOLE.
 NO REPRESENTATIVE OF THE COUNTY ENGINEER WILL SURVEY OR LAYOUT ANY PORTION OF THE WORK.
 THE OWNER OR HIS AUTHORIZED REPRESENTATIVE SHALL FURNISH THE COUNTY ENGINEER WITH GRADE SHEETS AND STATIONING FOR ALL HOUSE LATERALS AND Y BRANCHES AND SHALL PROVIDE STAKES FOR THEM AT THEIR PROPER LOCATIONS WITH STATIONING PLAINLY MARKED ANY CHANGE IN LOCATION SHALL BE REQUESTED BY THE OWNER OR HIS REPRESENTATIVE.
 NO REVISIONS SHALL BE MADE IN THESE PLANS WITHOUT THE APPROVAL OF THE COUNTY ENGINEER.

- 1 USE CEMENT MORTAR FOR ALL VITRIFIED CLAY PIPE JOINTS.
- 2 RESURFACE ALL TRENCH WITHIN PAVED AREA TO MEET L. A. COUNTY ROAD DEPT., OR CALIF. STATE HIGHWAY DEPT. REQUIREMENTS IN ACCORDANCE WITH PERMITS.
- 3 ENCASE FOUR FEET OF SEWER AT POINTS OF INTERFERENCE WITH POLES, S.A-119.
- 4 HOUSE LATERALS TO 7" CONSTRUCTED WITH INVERTS AT PROPERTY LINE... FEET BELOW CURB GRADE EXCEPT AS NOTED.
- 5 FOR ALLOWABLE LEAKAGE TEST USE FORMULA NO. 1 SPEC'S, SEC. 54.
- 6 BALL ALL PIPE JOINTS WITH 4" CEMENT MORTAR THAT ARE WITHIN 30' OF ALL PROPERTY LINES.
- 7 THE PRIVATE ENGINEER IS TO FURNISH THE HOUSE LATERAL DEPTH AT THE PROPERTY LINE BELOW THE TOP OF CURB ELEVATION FOR EACH HOUSE LATERAL ON THE GRADE SHEET.

PROFILE ALIGNMENT AND GRADE OF P.C. 4411
 SANITARY SEWERS PAGE 1
 TO BE CONSTRUCTED IN
 TRACT No 15912 (25,080)

PRIVATE CONTRACT NO. 4411

W.S. 65
 1 SHEET, 2 PAGES
 SCALE: VERT. 1"=4' HORIZ. 1"=40' APRIL, 1957
 PREPARED IN THE OFFICES OF

By *Edward R. R... 5-15-57*
 REG. C.E. NO. 9034

FOR LEGEND SEE PLAN NO. S-A-64

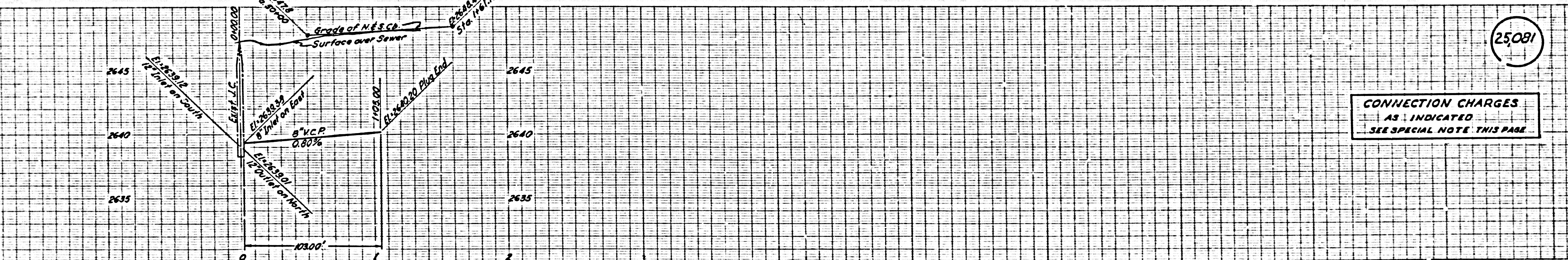
NOTE:
 GRADES TO WHICH THIS IMPROVEMENT IS TO BE CONSTRUCTED ARE SHOWN ON PLANS AND PROFILES. GRADE POINTS FOR TOP OF CURBS, CENTER LINE OF STREETS, OR CENTER LINE OF ALLEYS ARE SHOWN BY CIRCLES ON PROFILES AT ALL POINTS BETWEEN DESIGNATED POINTS THE GRADE SHALL BE ESTABLISHED SO AS TO CONFORM TO A STRAIGHT LINE DRAWN BETWEEN SAID DESIGNATED POINTS.
 ELEVATIONS ARE IN FEET ABOVE U.S.C. & G.S. MEAN SEA LEVEL. SURVEY OF 1929.
 THE DRAWING AND THE DATA HEREON ARE HEREBY MADE A PART OF THE SPECIFICATIONS.
 WORK SHALL BE CONSTRUCTED ACCORDING TO SPECIFICATIONS ON FILE IN THE OFFICE OF THE COUNTY ENGINEER AND SHALL BE INSPECTED ONLY IN THE PRESENCE OF THE COUNTY ENGINEER.
 BEFORE WORK CAN BE STARTED, THE CONTRACTOR MUST OBTAIN A PERMIT TO EXCAVATE IN COUNTY STREETS FROM THE L. A. COUNTY ROAD DEPT. FOR THE ST. AND MAKE A REPORT WITH THE COUNTY ENGINEER, ROOM 504 SAN AMERICAN BLDG. BLDG. 334 SO. BROADWAY SUFFICIENT TO COVER THE COST OF CONSTRUCTION INSPECTION AND RECORD PLANS.
 APPROVAL OF THIS PLAN BY THE COUNTY OF LOS ANGELES DOES NOT CONSTITUTE A REPRESENTATION AS TO THE ACCURACY OF THE LOCATION OF OR THE EXISTENCE OR NON-EXISTENCE OF ANY UNDERGROUND UTILITY PIPE, OR STRUCTURE WITHIN THE LIMITS OF THIS PROJECT THIS NOTE APPLIES TO ALL PAGES.
 IF WORK IS TO BE DONE IN A STATE HIGHWAY, A PERMIT MUST BE OBTAINED FROM THE STATE OF CALIFORNIA, DIVISION OF HIGHWAYS, 128 SOUTH SPRING STREET.

COUNTY OF LOS ANGELES, CALIFORNIA

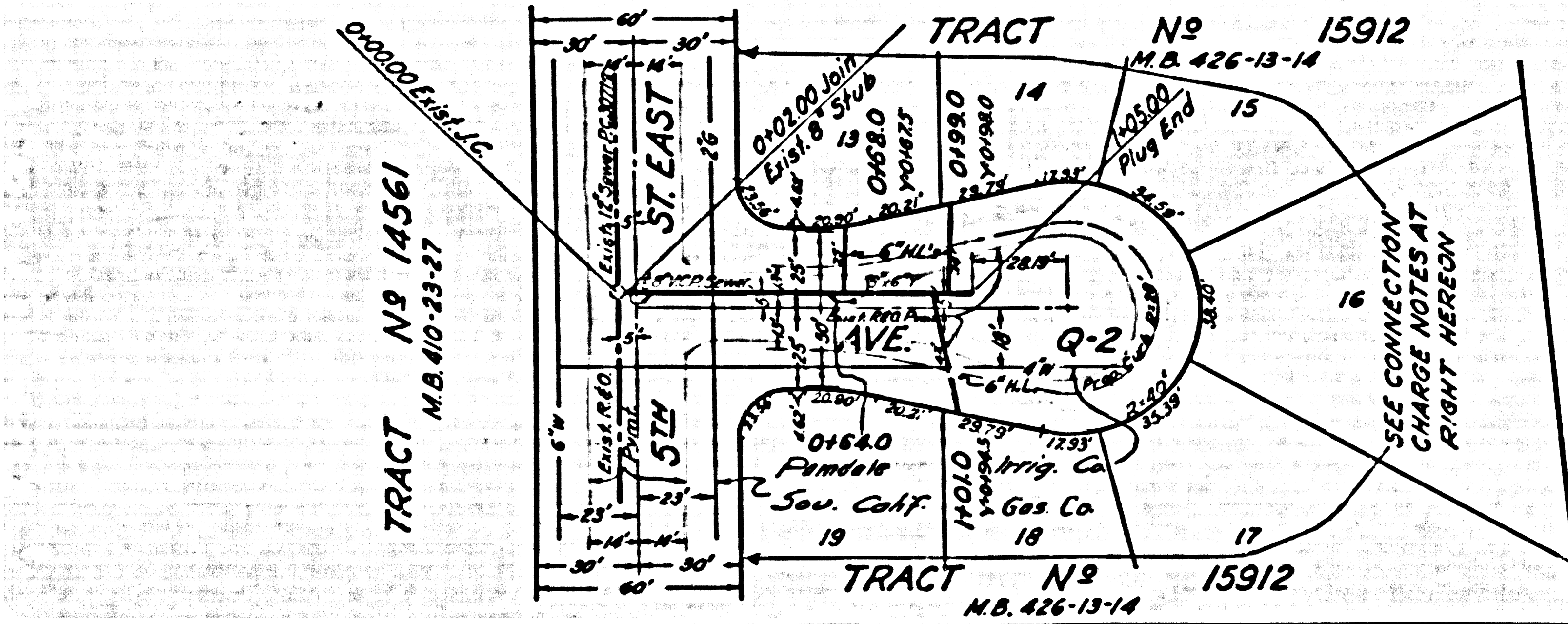
APPROVED, JOHN A. LAMBE, COUNTY ENGINEER
 APPROVED, A. M. BAWN, CHIEF ENGINEER
 BY *E. R. Hughes* SANITATION ENGINEER
 CHECKED BY *R. R. ... 5-15-57* OFFICE OF COUNTY ENGINEER, BLDG. C. & NO. 7862

CONNECTION CHARGES
 AS INDICATED
 SEE SPECIAL NOTE PAGE 2
L. Curtis 5-21-57

P.C. 4411 PAGE 2



CONNECTION CHARGES
 AS INDICATED
 SEE SPECIAL NOTE THIS PAGE



CONNECTION CHARGE NOTE
 Lot 13 Reimbursement Charge 2.80 Front Ft. (60 Ft.)
 Lot 14 No Charge for connection.
 Lot 15 Cannot connect unless M.L. is extended.
 Lot 16 Cannot connect unless M.L. is extended.
 Lot 17 Cannot connect unless M.L. is extended.
 Lot 18 No charge for connection.
 Lot 19 Reimbursement Charge 2.80 Front Ft. (60 Ft.)

SEE CONNECTION CHARGE NOTES AT RIGHT HEREON

J. W. ...