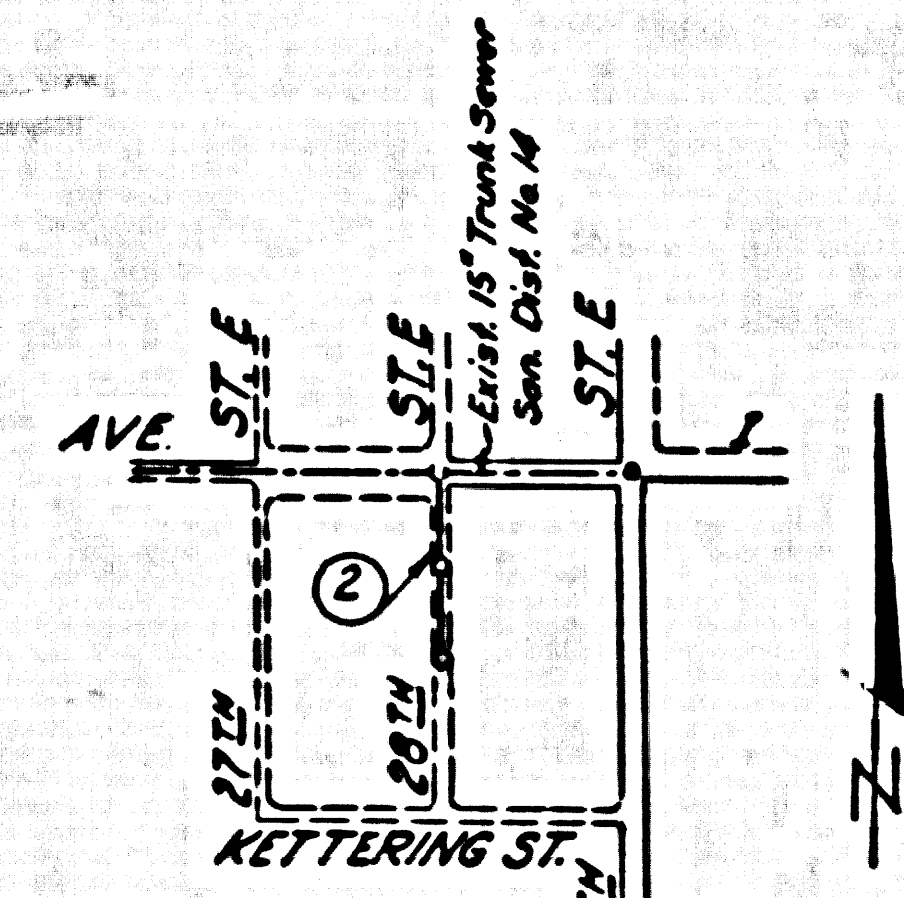


B.M.S. 2148 El. 2382.32  
 S.E. Cor. of Ave. I & 30th St. E.  
 Cut 5' high on S. Side of  
 R.P. #192978 E.  
 (Adj. 1957, El. 2382.66)



INDEX MAP  
 Scale 1"=1000'  
 R.S. 70-12  
 P.C. 4414

CONNECTION CHARGES  
 AS INDICATED  
 R.R. Allen 7-1-57

LANCASTER BLDG. DIST. NO. 8

- NOTES:
- PROVIDE STAKES ON THE PROPERTY LINE OR PROPERTY LINES PRODUCED AT RIGHT ANGLES TO THE SEWER LINE AT THE CENTER LINE OF EACH MANHOLE.
  - NO REPRESENTATIVE OF THE COUNTY ENGINEER WILL SURVEY OR LAYOUT ANY PORTION OF THE WORK.
  - THE OWNER OR HIS AUTHORIZED REPRESENTATIVE SHALL FURNISH THE COUNTY ENGINEER WITH GRADE SHEETS AND STATIONING FOR ALL HOUSE LATERALS AND Y BRANCHES AND SHALL PROVIDE STAKES FOR THEM AT THEIR PROPER LOCATIONS WITH STATIONING PLAINLY MARKED. ANY CHANGE IN LOCATION SHALL BE REQUESTED IN WRITING BY THE OWNER OR HIS REPRESENTATIVE.
  - NO REVISIONS SHALL BE MADE IN THESE PLANS WITHOUT THE APPROVAL OF THE COUNTY ENGINEER.
  - USE STANDARD MANHOLE FRAMES AND COVERS, S.A.-117.
  - USE STANDARD STRENGTH PIPE EXCEPT AS NOTED.
  - USE CEMENT MORTAR FOR ALL VITRIFIED CLAY PIPE JOINTS.
  - RESURFACE ALL TRENCH WITHIN PAVED AREA TO MEET L. A. COUNTY ROAD DEPT., OR CALIF. STATE HIGHWAY DEPT. SPECIFICATIONS IN ACCORDANCE WITH PERMITS.
  - INCASE FOUR FEET OF SWIMS AT POINTS OF INTERFERENCE WITH POLES, S.A.-119.
  - HOUSE LATERALS TO BE CONSTRUCTED WITH INVERTS AT PROPERTY LINE  $\frac{1}{2}$  FOOT BELOW GRADE OF  $\frac{1}{2}$  OF STREET.
  - ALL STRUCTURES SHALL BE BRICK SEWER STRUCTURES, S.A.-104.
  - FOR ALLOWABLE LEAKAGE TEST USE FORMULA NO. \_\_\_\_\_ SPEC. SEC. 59
  - MANHOLE TOPS IN UNIMPROVED RIGHTS-OF-WAY TO BE 6" ABOVE FINISHED GRADE.
  - BALL ALL PIPE JOINTS WITH 4" CEMENT MORTAR THAT ARE WITHIN 20 FEET OF ALL PROPERTY LINES OR IN SANITARY SEWER R/W'S.
  - THE PRIVATE ENGINEER TO FURNISH HOUSE LATERAL DEPTH AT PROPERTY LINE FOR EACH HOUSE LATERAL ON THE GRADE SHEET.
  - THE CONTRACTOR SHALL NOTIFY THE CONSTRUCTION AND STORM DRAIN DIVISION BY TELEPHONE WHITEHALL 2-8401 EXT. 40, AT LEAST 24 HOURS BEFORE STARTING ANY WORK UNDER THIS CONTRACT.

PROFILE ALIGNMENT AND GRADE OF P.C. 4414  
 SANITARY SEWERS PAGE 1  
 TO BE CONSTRUCTED IN  
 28TH STREET EAST  
 (PRIVATE STREET)

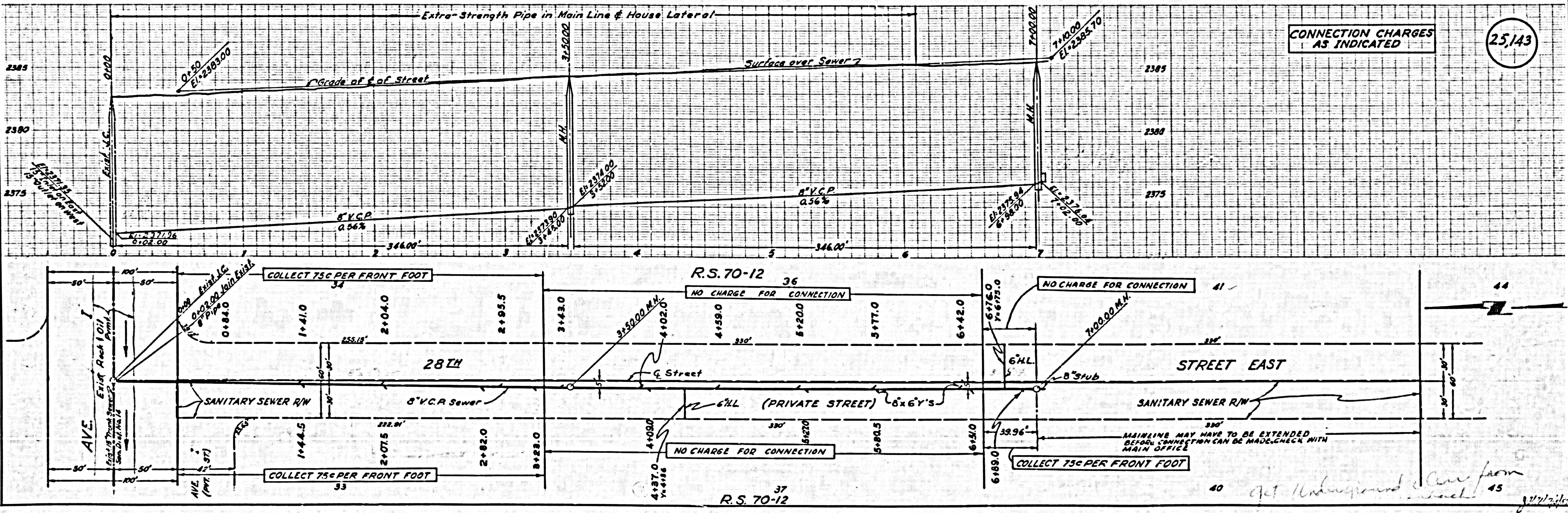
PRIVATE CONTRACT NO. 4414  
 W.S. 70  
 1 SHEETS, 2 PAGES  
 SCALE: VERT. 1"=4' HORIZ. 1"=40' APRIL 1957  
 PREPARED IN THE OFFICES OF

FOR LEGEND SEE PLAN NO. S-A-64

NOTES:  
 GRADES TO WHICH THIS IMPROVEMENT IS TO BE CONSTRUCTED ARE SHOWN ON PLANS AND PROFILES. GRADE POINTS FOR TOP OF CURB, CENTER LINE OF STREET, OR CENTER LINE OF ALLEYS ARE SHOWN BY CIRCLES ON PROFILES. AT ALL POINTS BETWEEN DESIGNATED POINTS THE GRADE SHALL BE ESTABLISHED SO AS TO COMFORM TO A STRAIGHT LINE DRAWN BETWEEN SAID DESIGNATED POINTS.  
 ELEVATIONS ARE IN FEET ABOVE U.S.C. & G.S. MEAN SEA LEVEL UNLESS OTHERWISE NOTED.  
 THIS DRAWING AND THE DATA HEREON ARE HEREBY MADE A PART OF THE SPECIFICATIONS.  
 BEFORE WORK CAN BE STARTED, THE CONTRACTOR MUST OBTAIN A PERMIT TO EXCAVATE IN COUNTY STREETS FROM THE L. A. COUNTY ROAD DEPT., 128 W. 5TH ST. AND MAKE A DEPOSIT WITH THE COUNTY ENGINEER, ROOM 224 SAN AMERICAN BUILDING, 150 SO. HOUGHTON ST. TO COVER THE COST OF CONSTRUCTION INSPECTION AND RECORD PLANS.  
 APPROVAL OF THIS PLAN BY THE COUNTY OF LOS ANGELES DOES NOT CONSTITUTE A REPRESENTATION AS TO THE ACCURACY OF THE LOCATION OF OR THE EXISTENCE OR NON-EXISTENCE OF ANY UNDERGROUND BRICK, PIPE, OR STRUCTURE WITHIN THE LIMITS OF THIS PROJECT. THIS NOTE APPLIES TO ALL PAGES.  
 IF WORK IS TO BE DONE IN A STATE HIGHWAY, A PERMIT MUST BE OBTAINED FROM THE STATE OF CALIFORNIA, DIVISION OF HIGHWAYS, 126 SOUTH SPRING STREET.

COUNTY OF LOS ANGELES, CALIFORNIA  
 APPROVED, JOHN A. LAMBE, COUNTY ENGINEER  
 APPROVED, A. M. BAWN, CHIEF ENGINEER  
 BY *[Signature]* BY *[Signature]*  
 SANITATION ENGINEER OFFICE ENGINEER  
 CHECKED BY *[Signature]* 9-1-57  
 OFFICE OF COUNTY ENGINEER, R.S. C. & NO. 7860

before breaking into any existing streets,  
 and before final acceptance of this work,  
 County Sanitation District should be notified  
 in order that required inspection may be made.



CONNECTION CHARGES  
 AS INDICATED

25143

MAINLINE MAY HAVE TO BE EXTENDED  
 BEFORE CONNECTION CAN BE MADE. CHECK WITH  
 MAIN OFFICE

COLLECT 75¢ PER FRONT FOOT

R.S. 70-12 36  
 NO CHARGE FOR CONNECTION

NO CHARGE FOR CONNECTION

R.S. 70-12 37

NO CHARGE FOR CONNECTION

COLLECT 75¢ PER FRONT FOOT

COLLECT 75¢ PER FRONT FOOT

COLLECT 75¢ PER FRONT FOOT