

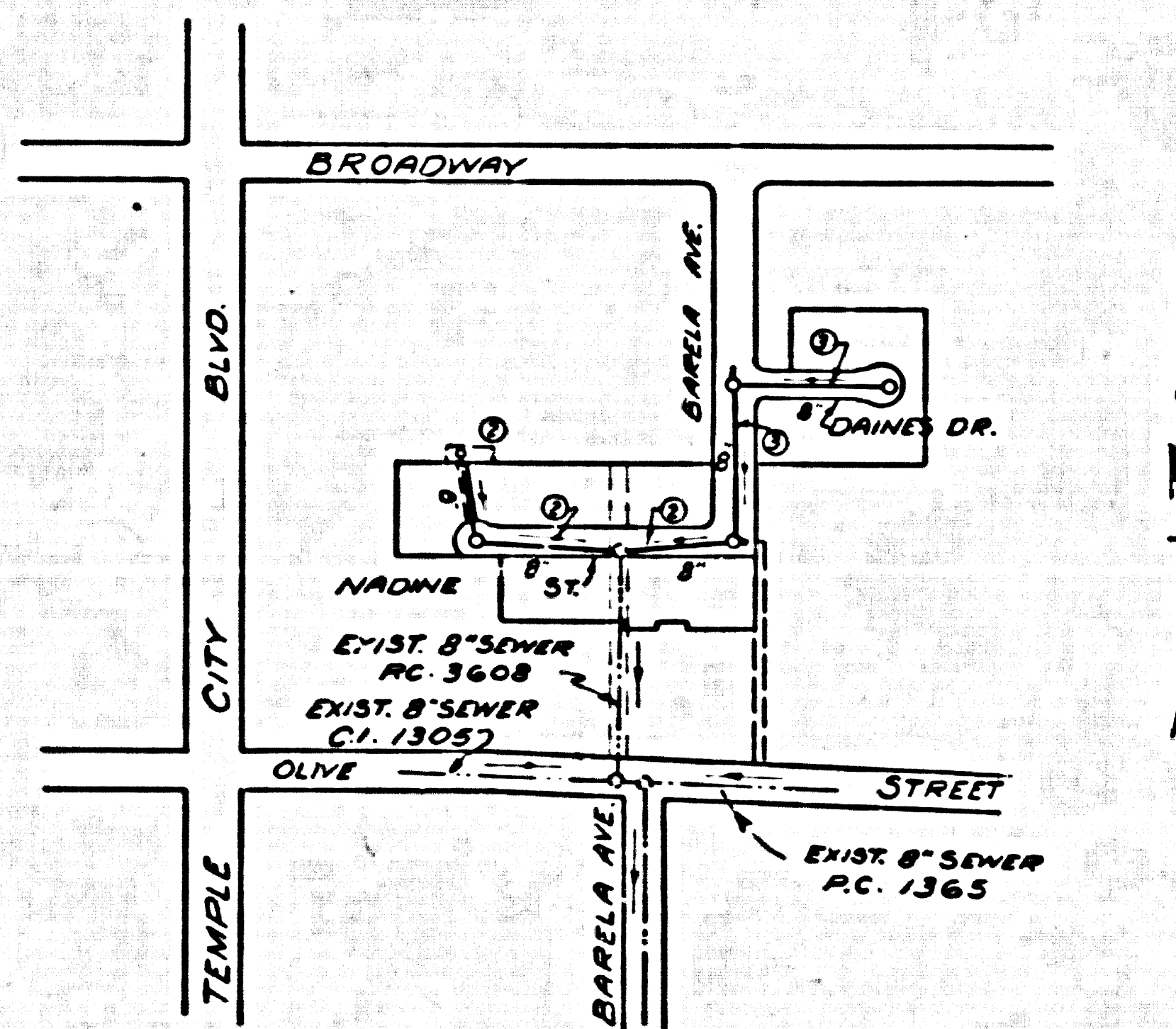
TEMPLE CITY BLDG. DIST. NO. 5

TO BE CONSTRUCTED IN
TRACT No 15762
PRIVATE CONTRACT NO. 4417

W.S. 44
2 SHEETS, 3 PAGES
SCALE: HORIZ. 1" = 40' VERT. 1" = 4' MARCH 1957

TREADWELL ENGINEERING CORPORATION
By: W.O. Treadwell REG. C. E. NO. 410
FOR LEGEND SEE PLAN NO. S-A-64

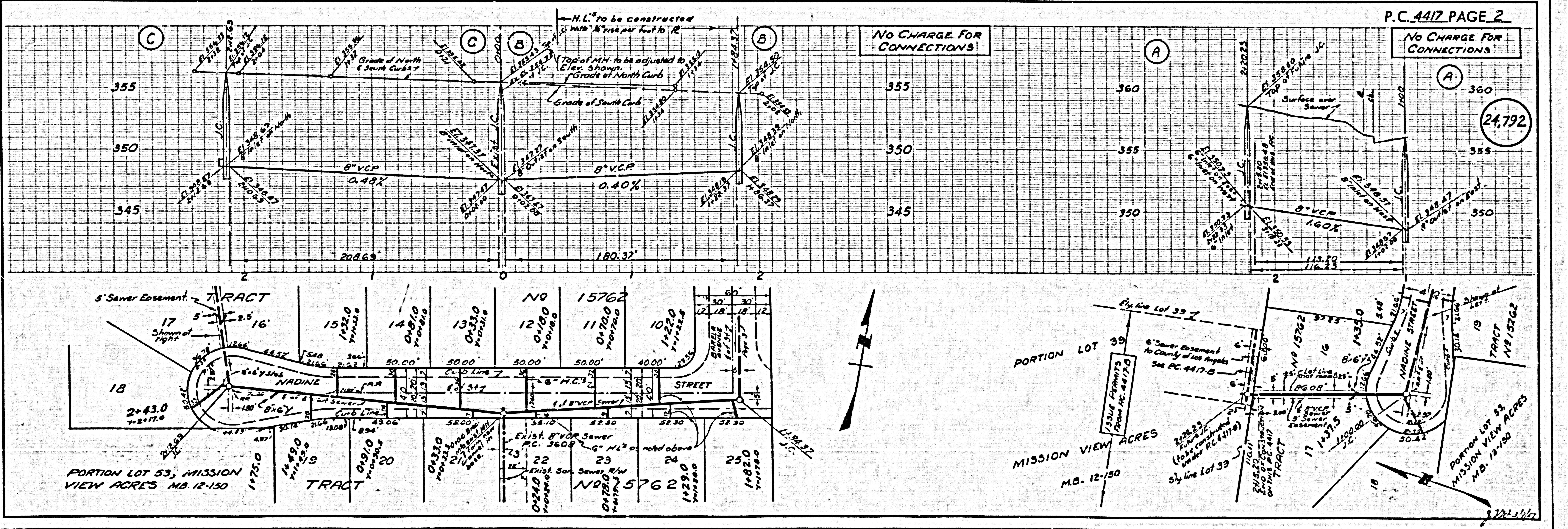
- NOTES:
- PROVIDE STAKES ON THE PROPERTY LINE OR PROPERTY LINES PROJECTED AT RIGHT ANGLES TO THE SEWER LINE AT THE CENTER LINE OF EACH MANHOLE.
 - NO REPRESENTATIVE OF THE COUNTY ENGINEER WILL SURVEY OR LAYOUT ANY PORTION OF THE WORK.
 - THE OWNER OR HIS AUTHORIZED REPRESENTATIVE SHALL FURNISH THE COUNTY ENGINEER WITH GRADE SHEETS AND STATIONING FOR ALL HOUSE LATERALS AND Y BRANCHES AND SHALL PROVIDE STAKES FOR THEM AT THEIR PROPER LOCATIONS WITH STATIONING PLAINLY MARKED. ANY CHANGE IN LOCATION SHALL BE REQUESTED BY WRITING BY THE OWNER OR HIS REPRESENTATIVE.
 - NO REVISIONS SHALL BE MADE IN THESE PLANS WITHOUT THE APPROVAL OF THE COUNTY ENGINEER.
 - USE STANDARD MANHOLE FRAMES AND COVERS, S.A.-117, EXCEPT AS NOTED.
 - USE STANDARD STRENGTH PIPE EXCEPT AS NOTED.
 - USE CEMENT MORTAR FOR ALL VITRIFIED CLAY PIPE JOINTS.
 - RESURFACE ALL TRENCH WITHIN PAVED AREA TO MEET L. A. COUNTY ROAD DEPT. OR CALIF. STATE HIGHWAY DEPT. REQUIREMENTS IN ACCORDANCE WITH PERMITS.
 - SHOULDER FOUR FEET OF SEWER AT POINTS OF INTERFERENCE WITH POLES, S.A.-119.
 - HOUSE LATERALS TO BE CONSTRUCTED WITH INVERTS AT PROPERTY LINE 6" JUST BELOW CURB GRADE EXCEPT AS NOTED.
 - ALL STRUCTURES SHALL BE BRICK SEWER STRUCTURES, S.A.-104, EXCEPT AS NOTED.
 - FOR ALLOWABLE LEAKAGE TEST USE FORMULA NO. 1 SPEC. S. C. 64.
 - MANHOLE TOPS IN UNIMPROVED RIGHTS-OF-WAY TO BE 6" ABOVE FINISHED GRADE.
 - THE PRIVATE ENGINEER IS TO FURNISH THE HOUSE LATERAL DEPTH AT THE PROPERTY LINE BELOW THE TOP OF CURB ELEVATION FOR EACH HOUSE LATERAL, ON THE GRADE SHEET.



INDEX MAP
SCALE 1" = 300'
TRACT No 15762
P.C. 4417

B.M. 56. 596 Elev. 379.941
Live Oak Avenue & Temple City Blvd.
C.S. Mon. in hand hole - Centerline
intersection of Live Oak Ave & Temple
City Blvd. Arcadia Quad-1952

CONNECTION CHARGES
AS INDICATED
C.C. 1/1/57



P.C. 4417 PAGE 2
No CHARGE FOR CONNECTIONS

24,792

TRACT NO 15762
PORTION LOT 53, MISSION VIEW ACRES M.B. 12-150
PORTION LOT 39, MISSION VIEW ACRES M.B. 12-150
PORTION LOT 19, MISSION VIEW ACRES M.B. 12-150
PORTION LOT 18, MISSION VIEW ACRES M.B. 12-150
PORTION LOT 17, MISSION VIEW ACRES M.B. 12-150
PORTION LOT 16, MISSION VIEW ACRES M.B. 12-150
PORTION LOT 15, MISSION VIEW ACRES M.B. 12-150
PORTION LOT 14, MISSION VIEW ACRES M.B. 12-150
PORTION LOT 13, MISSION VIEW ACRES M.B. 12-150
PORTION LOT 12, MISSION VIEW ACRES M.B. 12-150
PORTION LOT 11, MISSION VIEW ACRES M.B. 12-150
PORTION LOT 10, MISSION VIEW ACRES M.B. 12-150
PORTION LOT 9, MISSION VIEW ACRES M.B. 12-150
PORTION LOT 8, MISSION VIEW ACRES M.B. 12-150
PORTION LOT 7, MISSION VIEW ACRES M.B. 12-150
PORTION LOT 6, MISSION VIEW ACRES M.B. 12-150
PORTION LOT 5, MISSION VIEW ACRES M.B. 12-150
PORTION LOT 4, MISSION VIEW ACRES M.B. 12-150
PORTION LOT 3, MISSION VIEW ACRES M.B. 12-150
PORTION LOT 2, MISSION VIEW ACRES M.B. 12-150
PORTION LOT 1, MISSION VIEW ACRES M.B. 12-150

MISSION VIEW ACRES
M.B. 12-150
PORTION LOT 39
PORTION LOT 19
PORTION LOT 18
PORTION LOT 17
PORTION LOT 16
PORTION LOT 15
PORTION LOT 14
PORTION LOT 13
PORTION LOT 12
PORTION LOT 11
PORTION LOT 10
PORTION LOT 9
PORTION LOT 8
PORTION LOT 7
PORTION LOT 6
PORTION LOT 5
PORTION LOT 4
PORTION LOT 3
PORTION LOT 2
PORTION LOT 1

TEMPLE CITY BLDG. DIST. NO. 5

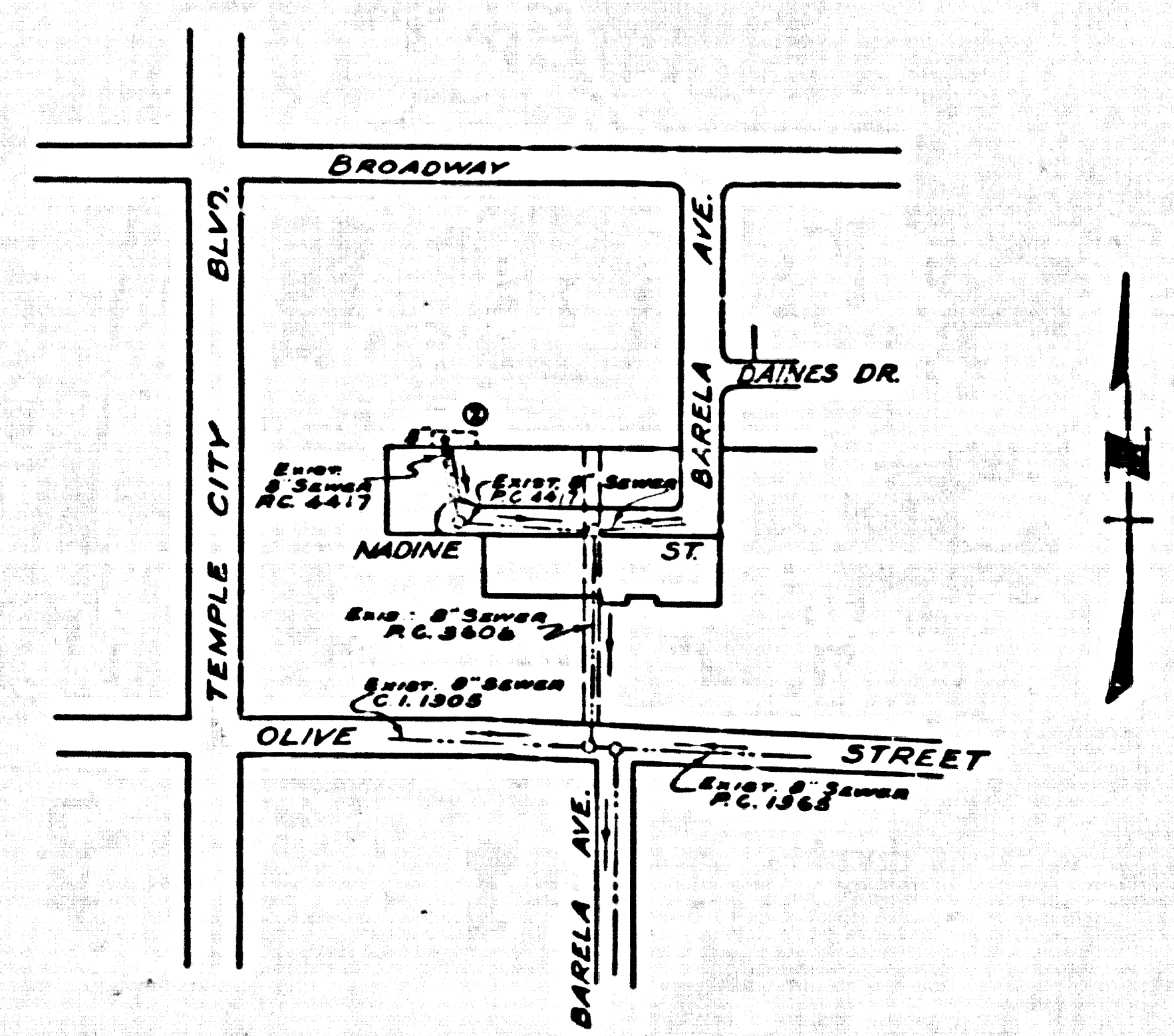
PROFILE ALIGNMENT AND GRADE OF **P.C. 4417-B**
SANITARY SEWERS PAGE 1

TO BE CONSTRUCTED IN
SANITARY SEWER RIGHT OF WAY (25,487)
NORTH OF NADINE STREET

PRIVATE CONTRACT NO. 4417-B
 W.S. 44

1 SHEET, 2 PAGES
 SCALE: VERT. 1" = 4' HORIZ. 1" = 40'
 MAY, 1957
 PREPARED IN THE OFFICES OF

TREADWELL ENGINEERING CORPORATION
 by *Paul H. Fonglet*
 P.C.E. NO. 1832
 FOR LEGEND SEE PLAN NO. S-A-64



INDEX MAP
 SCALE 1" = 300'
 P.C. 4417-B

B.M. S.G. 596 Elev. 379.341
 Live Oak Avenue & Temple City Blvd.
 C.S. Mon. in hand hole - Centerline
 intersection of Live Oak Avenue
 & Temple City Blvd.
 Arcadia Quad 1952

NO CHARGE
 FOR CONNECTIONS
10-10-57

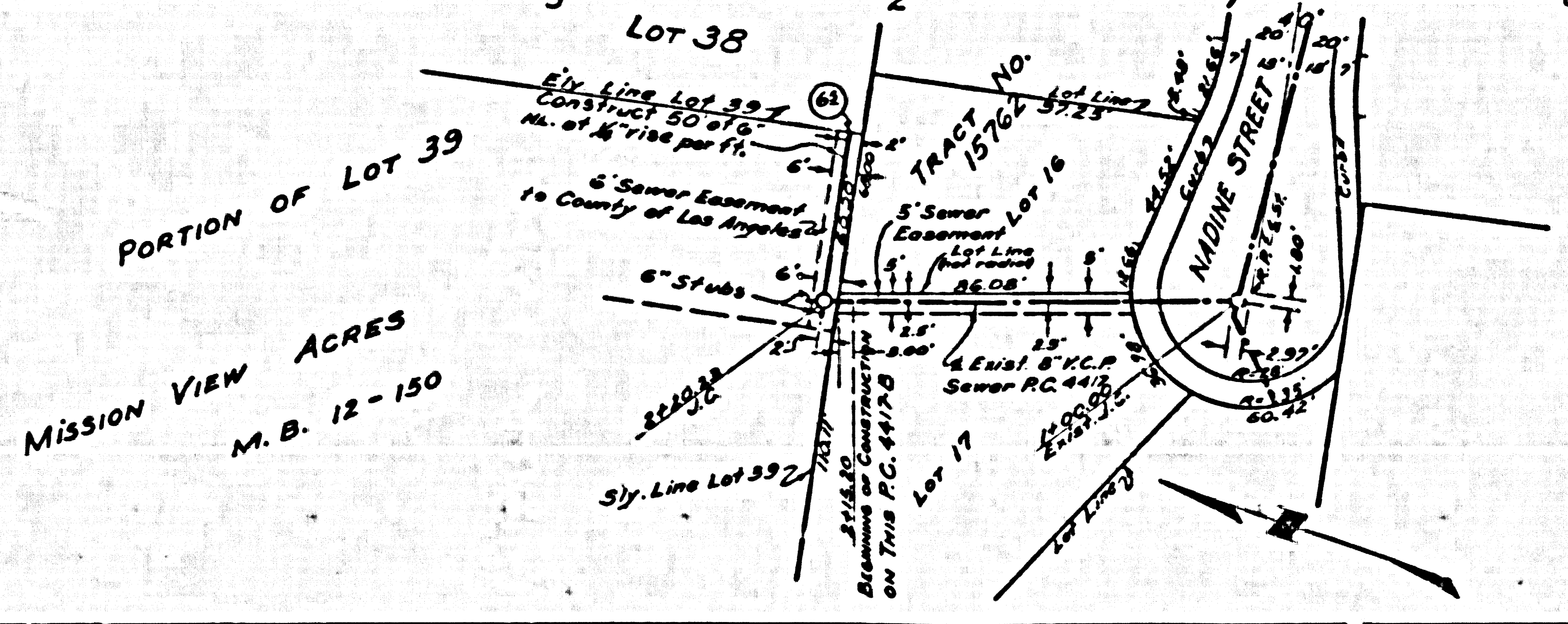
- NOTES:**
- PROVIDE STAKES ON THE PROPERTY LINE OR ADJACENT LINES PRODUCED AT RIGHT ANGLES TO THE SEWER LINE AT THE CENTER LINE OF EACH MANHOLE.
 - NO REPRESENTATIVE OF THE COUNTY ENGINEER WILL SURVEY OR LAYOUT ANY PORTION OF THE WORK.
 - THE OWNER OR HIS APPOINTED REPRESENTATIVE SHALL FURNISH THE COUNTY ENGINEER WITH GRADE SHEETS AND STATION FOR ALL HOUSE LATERALS AND T BRANCHES AND SHALL PROVIDE STAKES FOR THESE AT THEIR PROPER LOCATIONS WITH BRACKETS PLACED THERE. ANY CHANGE IN LOCATION SHALL BE INDICATED BY WRITING BY THE OWNER OR HIS REPRESENTATIVE.
 - NO SEWERAGE SHALL BE MADE IN THESE PLANS WITHOUT THE APPROVAL OF THE COUNTY ENGINEER.
 - USE STANDARD MANHOLE FRAMES AND COVERS, S.A-117, EXCEPT AS NOTED.
 - USE STANDARD STRENGTH PIPE EXCEPT AS NOTED.
 - USE CEMENT MORTAR FOR ALL VITRIFIED CLAY PIPE JOINTS.
 - RESURFACE ALL TRENCH WITHIN PAVED AREA TO MEET L.A. COUNTY ROAD DEPT. OR CALIF. STATE HIGHWAY DEPT. REQUIREMENTS IN ACCORDANCE WITH PERMITS.
 - DISCARD FORMS PART OF SEWER AS POINTS OF INTERFERENCE WITH POLES, S.A-119.
 - HOUSE LATERALS TO BE CONSTRUCTED WITH BRICKS AT PROPERTY LINE 12" BELOW CURB GRADE EXCEPT AS NOTED.
 - ALL STRUCTURES SHALL BE BRICK SEWER STRUCTURES, S.A-104, EXCEPT AS NOTED.
 - FOR ALLOWABLE HEADS USE FORMULA NO. 1, SPEC. SEC. 86.
 - MANHOLE TOPS IN UNIMPROVED RIGHTS-OF-WAY TO BE 6" ABOVE FINISHED GRADE.
 - THE PRIVATE ENGINEER IS TO FURNISH THE HOUSE LATERAL DEPTH AT THE PROPERTY LINE BELOW THE ELEVATION OF CENTERLINE OF SEWER RIGHT-OF-WAY FOR EACH HOUSE LATERAL ON THE GRADE SHEET.

NOTE:
 THE CONTRACTOR SHALL NOTIFY THE CONSTRUCTION AND STORM DRAIN DIVISION BY TELEPHONE HA 9-4747, EXT. 362 AT LEAST 24 HOURS BEFORE STARTING ANY WORK UNDER THIS CONTRACT.

NOTES:
 GRADES TO WHICH THIS IMPROVEMENT IS TO BE CONSTRUCTED ARE SHOWN ON PLANS AND PROFILES. GRADE POINTS FOR TOP OF CURB, CENTER LINE OF STREETS, OR CENTER LINE OF ALLEYS ARE SHOWN BY CIRCLES ON PROFILES. ALL POINTS BETWEEN INFORMATION POINTS THE GRADE SHALL BE ESTABLISHED SO AS TO CORRESPOND TO A STRAIGHT LINE DRAWN BETWEEN SAID INFORMATION POINTS.
 ELEVATIONS ARE IN FEET ABOVE U.S. AND C.S. SEA LEVEL DATUM OF 1929.
 THIS DRAWING AND THE DATA HEREON ARE HEREBY MADE A PART OF THE SPECIFICATIONS OF THE COUNTY ENGINEER AND SHALL BE PROSECUTED ONLY IN THE PRESENCE OF THE COUNTY ENGINEER.
 BEFORE WORK CAN BE STARTED, THE CONTRACTOR MUST OBTAIN A PERMIT TO EXCAVATE IN COUNTY STREETS FROM THE L.A. COUNTY ROAD DEPT. 150 W. 2ND ST. AND MAKE A DEPOSIT WITH THE COUNTY ENGINEER, ROOM 134 PAM AMERICAN BUILDING, 220 SO. HOUSTON ST. TO COVER THE COST OF CONSTRUCTION INSPECTION AND RECORD PLANS.
 APPROVAL OF THIS PLAN BY THE COUNTY OF LOS ANGELES DOES NOT CONSTITUTE A REPRESENTATION AS TO THE ACCURACY OF THE LOCATION OF OR THE EXISTENCE OR NON-EXISTENCE OF ANY UNDERGROUND UTILITY PIPE, OR STRUCTURE WITHIN THE LIMITS OF THE PROJECT. THE NOTE APPLIES TO ALL PAGES.
 IF WORK IS TO BE DONE IN A STATE HIGHWAY, A PERMIT MUST BE OBTAINED FROM THE STATE OF CALIFORNIA, DIVISION OF HIGHWAYS, 120 SOUTH BRIDGE STREET.

COUNTY OF LOS ANGELES, CALIFORNIA
 APPROVED, JOHN A. LAMBE, COUNTY ENGINEER
 APPROVED, A. M. RAWN, CHIEF ENGINEER
 by *J. H. Hughes* (SANITATION ENGINEER) and *A. M. Rawn* (CHIEF ENGINEER)
 CHECKED BY *Dr. W. A. 10-10-57*
 OFFICE OF COUNTY ENGINEER, BOX C. E. NO. 7466

P.C. 4417-B PAGE 2



P.C. 4417-B