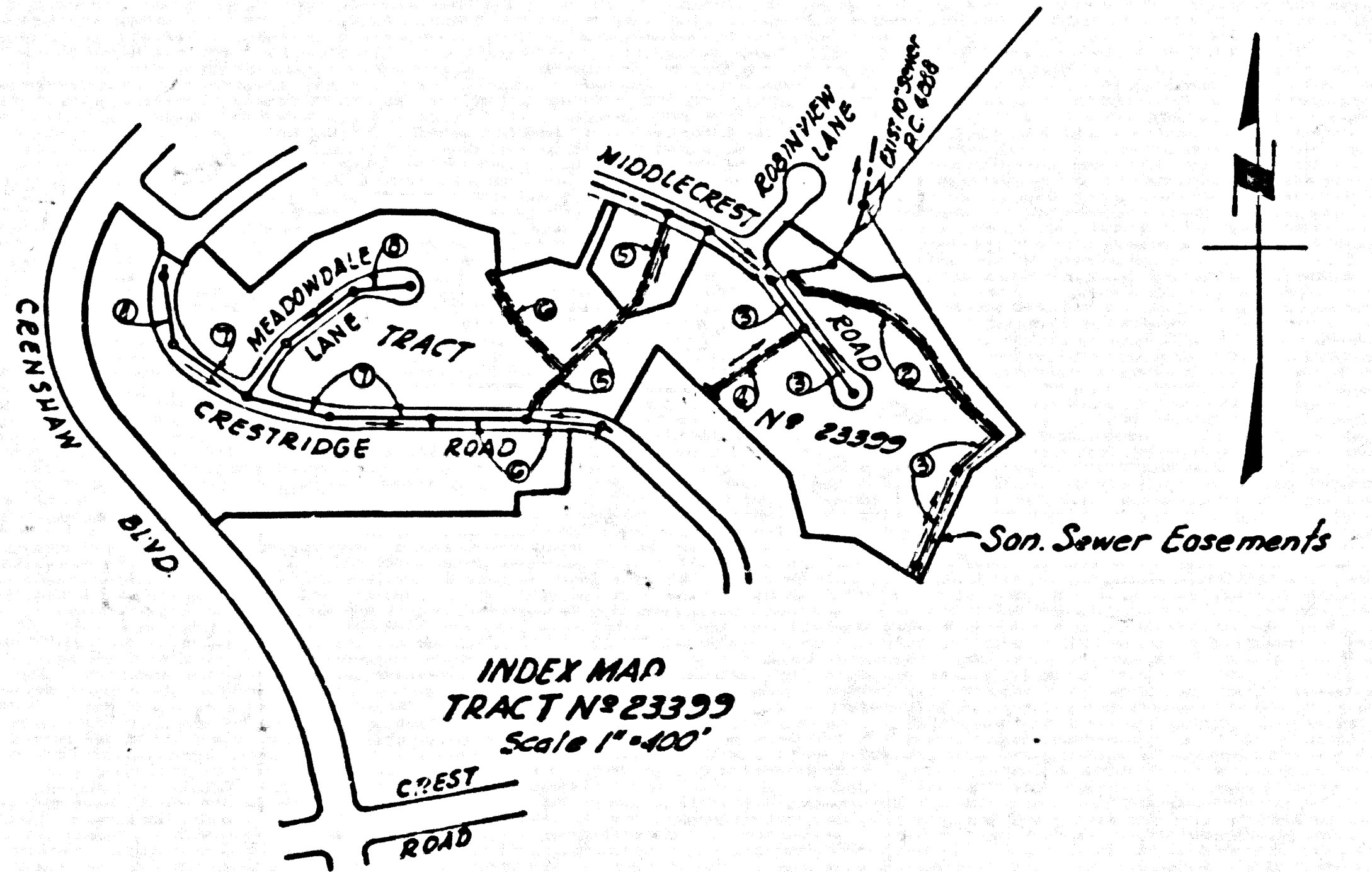


B.M.
 N.E. cor. Crenshaw Blvd & Crest Rd. 52.5'
 E'ly from Center of Pav't and 40' N'ly
 from center of Pav't under Guy Cable 55.3'
 N.E. of Power Pole #10348.9
 Sta. C.S. won. stamped '8M 50.7 1956 RE 5820
 in 12" conc. post. 1953 Adj. Elev.
 F.B. 2100. 0a13 1201. 398

NOTE:
 THE CONTRACTOR SHALL NOTIFY THE
 CONSTRUCTION AND SEWAGE DRAIN DIVISION
 BY TELEPHONE, MADISON 9-4747, EXT. 362,
 AT LEAST 24 HOURS BEFORE STARTING ANY
 WORK UNDER THIS CONTRACT.



NO CHARGE FOR
 CONNECTIONS
 71, 27, C. 1-1-57

LOMITA BLDG. DIST. NO. 71

- NOTE:
 PROVIDE STAKES ON THE PROPERTY LINE OR PROPERTY LINES PRODUCED AT RIGHT ANGLES TO THE SEWER LINE AT THE CENTER
 LINE OF EACH MANHOLE.
 NO REPRESENTATIVE OF THE COUNTY ENGINEER WILL SURVEY OR LAYOUT ANY PORTION OF THE WORK.
 THE OWNER OR HIS AUTHORIZED REPRESENTATIVE SHALL FURNISH THE COUNTY ENGINEER WITH GRADE SHEETS AND STATION
 FOR ALL HOUSE LATERALS AND Y BRANCHES AND SHALL PROVIDE STAKES FOR THEM AT THEIR PROPER LOCATIONS WITH STATION-
 ING PLAINLY MARKED. ANY CHANGE IN LOCATION SHALL BE REQUESTED IN WRITING BY THE OWNER OR HIS REPRESENTATIVE.
 NO REVISIONS SHALL BE MADE IN THESE PLANS WITHOUT THE APPROVAL OF THE COUNTY ENGINEER.
1. USE STANDARD MANHOLE FRAMES AND COVERS, S.A-117, EXCEPT AS NOTED.
 2. USE STANDARD STRENGTH PIPE EXCEPT AS NOTED.
 3. USE CEMENT MORTAR FOR ALL VITRIFIED CLAY PIPE JOINTS.
 4. RESURFACE ALL TRENCH WITHIN PAVED AREA TO MEET L. A. COUNTY ROAD DEPT., OR CALIF. STATE HIGHWAY DEPT. REQUIRE-
 MENTS IN ACCORDANCE WITH PERMITS.
 5. ENCASE FOUR FEET OF SEWER AT POINTS OF INTERFERENCE WITH POLES, S.A-118.
 6. HOUSE LATERALS TO BE CONSTRUCTED WITH INVERTS AT PROPERTY LINE... FEET BELOW CURB GRADE EXCEPT AS NOTED.
 7. ALL STRUCTURES SHALL BE IN ACCORDANCE WITH SPECIFICATIONS S.A-184, EXCEPT AS NOTED.
 8. FOR ALLOWABLE SLEAKAGE TEST USE FORMULA NO. 1 SPEC. SEC. 54.
 9. MANHOLE TOPS IN UNIMPROVED RIGHTS-OF-WAY TO BE 6" ABOVE FINISHED GRADE.
 10. No Construction will be permitted in filled area unless acceptable certification is submitted to the construction Division of the County Engineer's Dept. that Compaction is greater than 80%.
 a) If Compaction is less than 50%, the sewer must be graded as shown on plans (per S-4-166).
 b) If Compaction is greater than 50%, grading is not required, however, Joint Compound must be substituted for cement mortar for all joints in filled areas.
 11. Private Engineer is to furnish house lateral depth at property line below the top of curb elevation for each house lateral on the grade sheet.

ENGINEERING SERVICE CORPORATION
 1127 W. WASHINGTON BLVD.
 LOS ANGELES 15, CALIF. RL 9-7281

REVISIONS		TRACED BY M.M.	
		DES'G'D BY C.B.	
		CK'D BY J.P.	
		SUBMITTED BY H.S.	
SUB STRUCTURES OK'D			
W. O. NO.	DWG. NO.	DATE	SCALE
6390 - G		APRIL 1957	A3 SHOWN

TRACT No 23399 (25,601)

PRIVATE CONTRACT NO. 4418

W.S. 27
 4 SHEETS, 8 PAGES

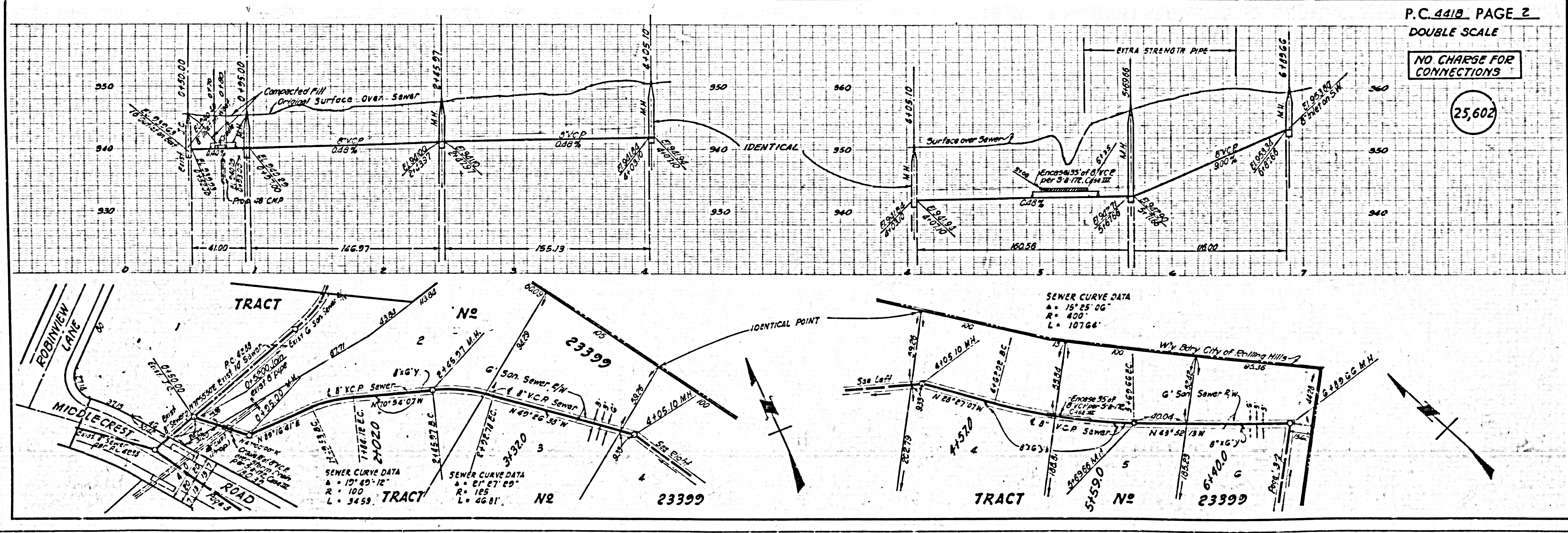
SCALE: HORIZ. 1"=50' VERT. 1"=4' April, 1957

PREPARED IN THE OFFICES OF
 ENGINEERING SERVICE CORPORATION
 BY J. P. [Signature]
 REG. C. E. NO. 3335

FOR LEGEND SEE PLAN NO. S-A-64

NOTE:
 GRADES TO WHICH THE IMPROVEMENT IS TO BE CONSTRUCTED ARE SHOWN ON PLANS AND PROFILE GRADE POINTS FOR
 TOP OF CURB, CENTER LINE OF STREETS OR CENTER LINE OF ALLEYS ARE SHOWN BY CIRCLES ON PROFILES AT ALL POINTS BETWEEN
 DESIGNATED POINTS THE GRADE SHALL BE ESTABLISHED SO AS TO CONFORM TO A STRAIGHT LINE DRAWN BETWEEN SAID DESIG-
 NATED POINTS.
 ELEVATIONS ARE IN FEET ABOVE U.S.C. & G.S. SEA LEVEL BATHY OF 1929.
 THIS DRAWING AND THE DATA HEREON ARE HEREBY MADE A PART OF THE SPECIFICATIONS.
 WORK SHALL BE CONSTRUCTED ACCORDING TO SPECIFIC ATIONS ON FILE IN THE OFFICE OF THE COUNTY ENGINEER AND SHALL
 BE INSPECTED ONLY IN THE PRESENCE OF THE COUNTY ENGINEER.
 BEFORE WORK CAN BE STARTED, THE CONTRACTOR MUST OBTAIN A PERMIT TO EXCAVATE IN COUNTY STREETS FROM THE
 L. A. COUNTY ROAD DEPT., 128 W. 2ND ST. AND MAKE A DEPOSIT WITH THE COUNTY ENGINEER, ROOM 384 PAIN AMERICAN BUILD-
 ING, 215 SO. BROADWAY SUFFICIENT TO COVER THE COST OF CONSTRUCTION INSPECTION AND RECORD PLANS.
 APPROVAL OF THIS PLAN BY THE COUNTY OF LOS ANGELES DOES NOT CONSTITUTE A REPRESENTATION AS TO THE ACCURACY
 OF THE LOCATION OF OR THE EXISTENCE OR NON-EXISTENCE OF ANY UNBARRICADED UTILITY PIPES OR STRUCTURES WITHIN THE
 LIMITS OF THIS PROJECT THIS NOTE APPLIES TO ALL PAGES.
 IF WORK IS TO BE DONE ON A STATE HIGHWAY, A PERMIT MUST BE OBTAINED FROM THE STATE OF CALIFORNIA, DIVISION OF
 HIGHWAYS, 128 SOUTH SPRING STREET.

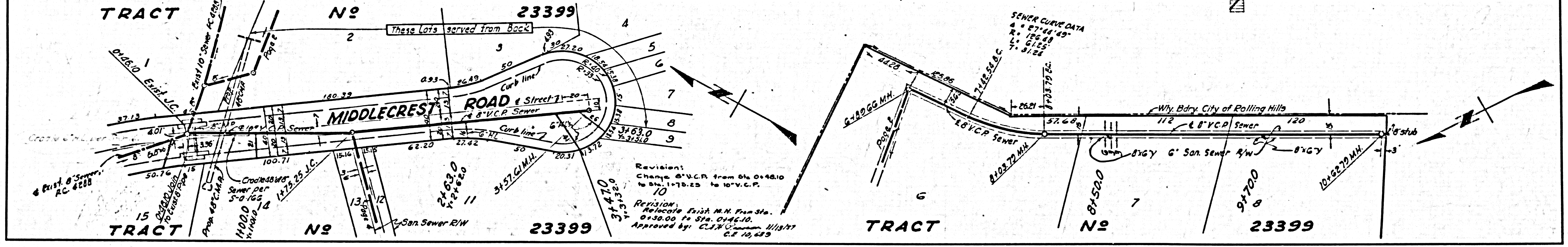
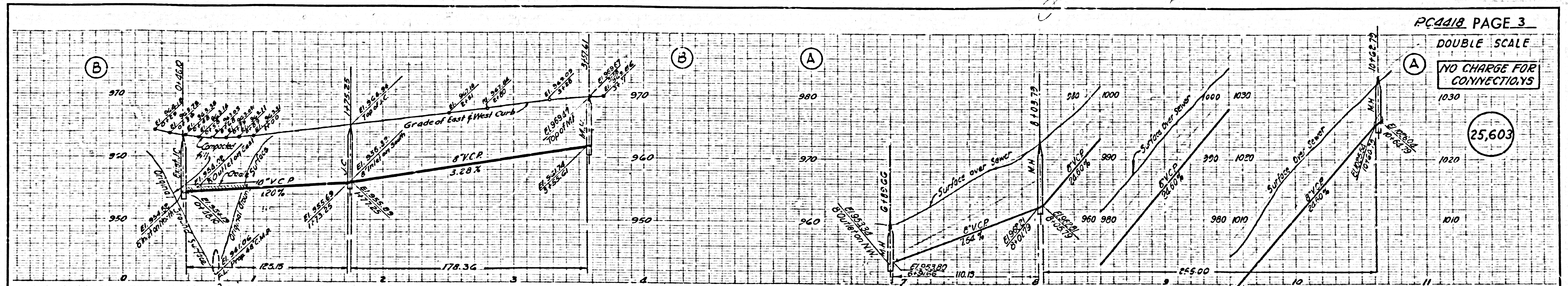
COUNTY OF LOS ANGELES, CALIFORNIA
 APPROVED, JOHN A. LAMME, COUNTY ENGINEER
 APPROVED, A. M. BAWN, CHIEF ENGINEER
 BY N. J. [Signature] 3357, SANITATION ENGINEER BY [Signature] OFFICE ENGINEER
 CHECKED BY [Signature] 7-14-57
 OFFICE OF COUNTY ENGINEER, REG. C. E. NO. 3466



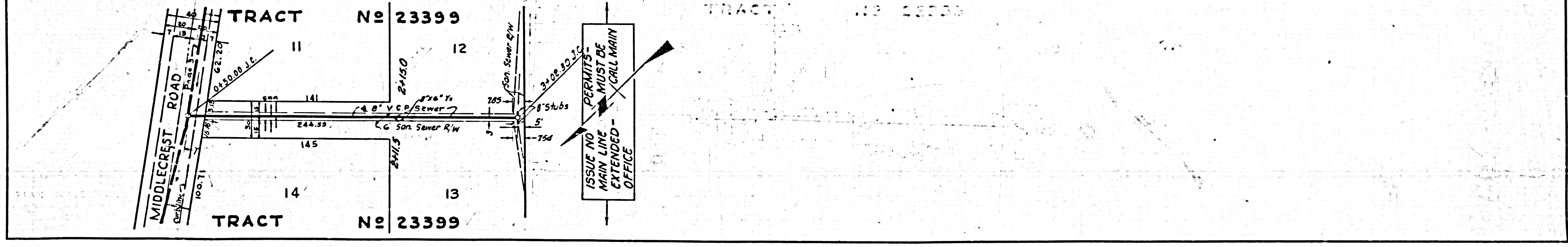
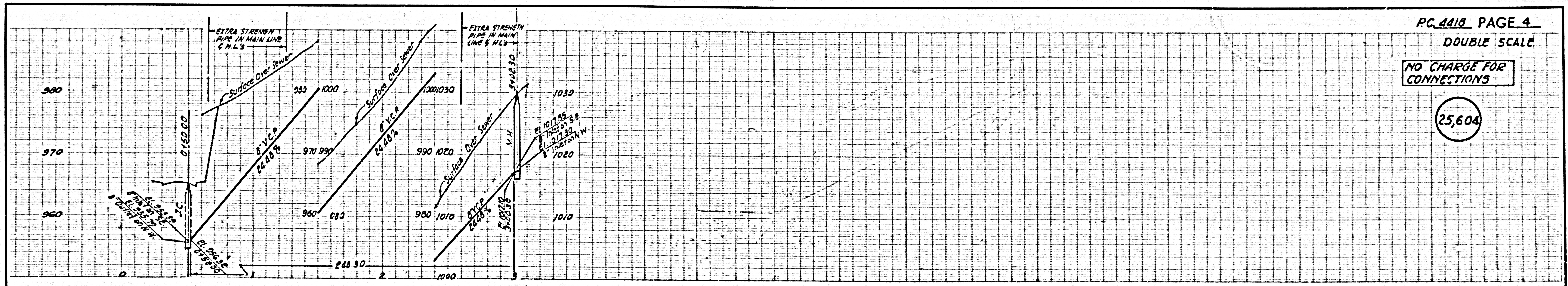
NO CHARGE FOR
 CONNECTIONS

(25,602)

25,603



25,604

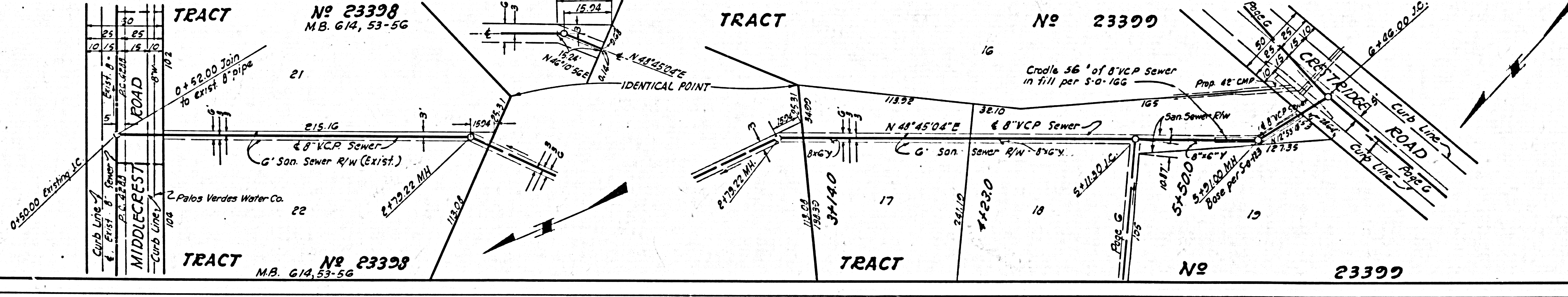
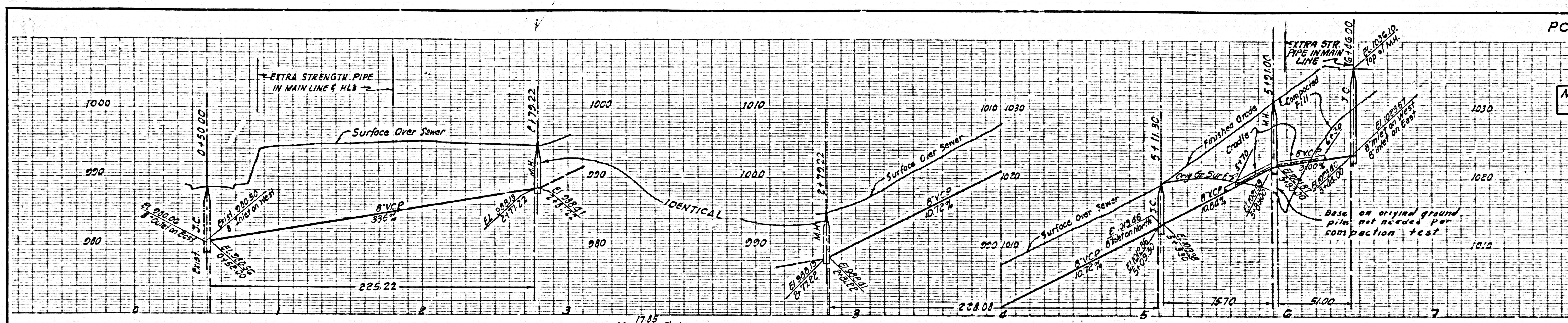


ISSUE NO PERMITS - MAIN LINE MUST BE EXTENDED - CALL MAIN OFFICE

DOUBLE SCALE

NO CHARGE FOR CONNECTIONS

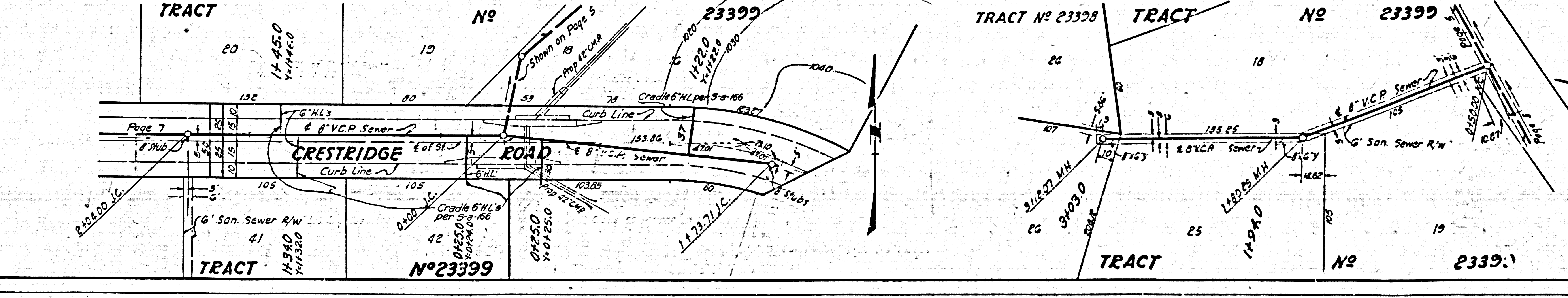
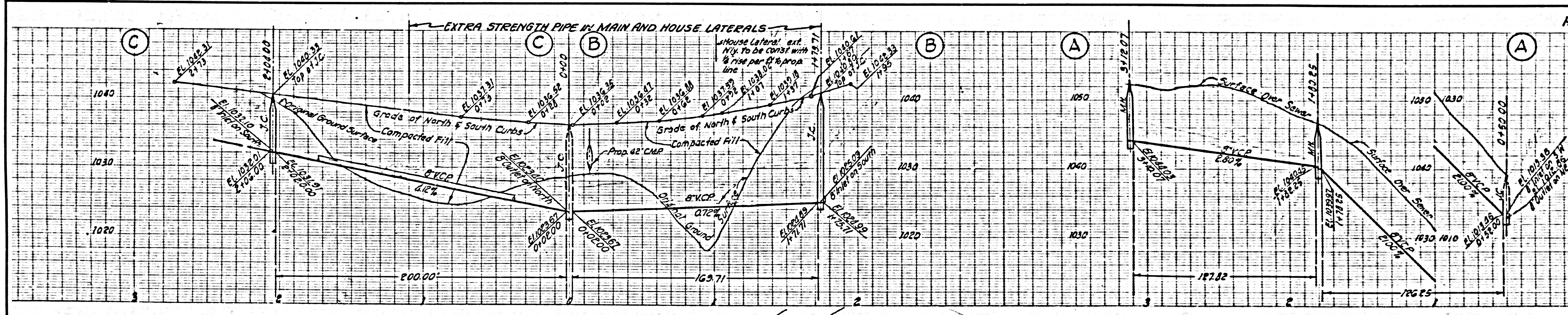
25,605



DOUBLE SCALE

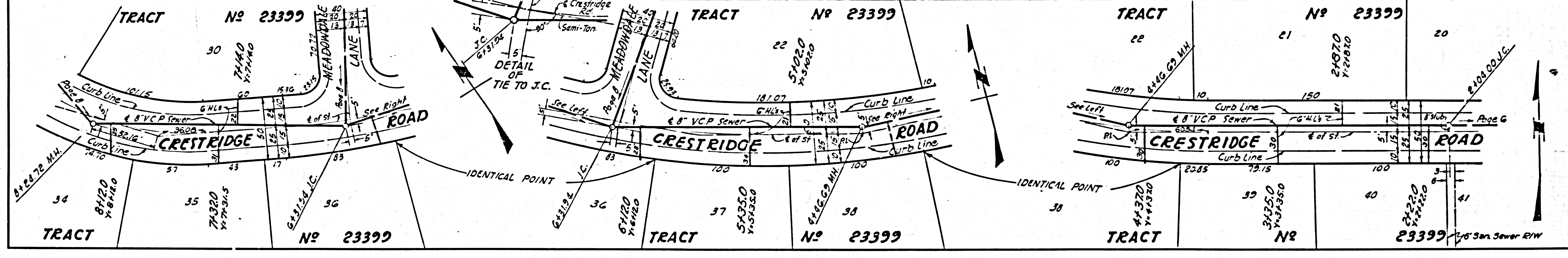
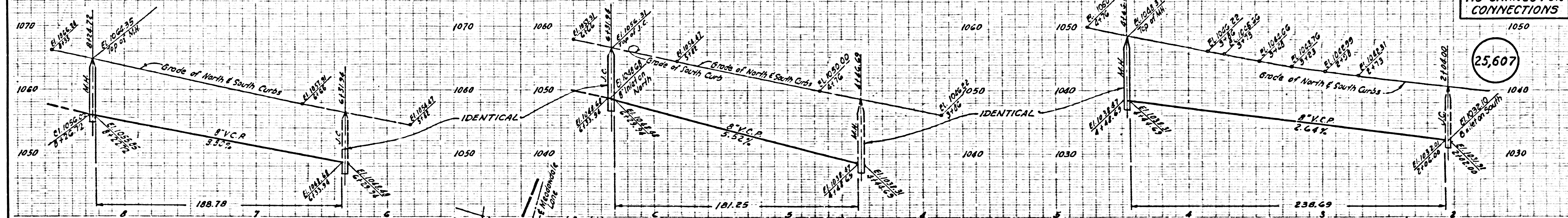
NO CHARGE FOR CONNECTIONS

25,606



NO CHARGE FOR CONNECTIONS

25,607



NO CHARGE FOR CONNECTIONS

25,608

