

BENCH MARK SY 3851
 L.A. COUNTY SURVEY MON. 62ND
 CENTRALIA RD. & NORWALK BLVD.
 ELEV. 32.393 ANTESIA QUAD.

LOTS 3 thru and incl. 22 are served
 by H.L.'s constructed under P.C. 4173

CONNECTION CHARGES
 AS INDICATED
L. Carter 5-21-58

BELFLOWER BLDG. DIST. NO. 4

- NOTES
- PROVIDE STAKES ON THE PROPERTY LINE OR PROPERTY LINES PRODUCED AT RIGHT ANGLES TO THE SEWER LINE AT THE CENTER LINE OF EACH MANHOLE.
 - NO REPRESENTATIVE OF THE COUNTY ENGINEER WILL SURVEY OR LAYOUT ANY PORTION OF THE WORK.
 - THE OWNER OR HIS AUTHORIZED REPRESENTATIVE SHALL FURNISH THE COUNTY ENGINEER WITH GRADE SHEETS AND STATION FOR ALL HOUSE LATERALS AND T BRANCHES AND SHALL PROVIDE STAKES FOR THEM AT THEIR PROPER LOCATIONS WITH STATIONING PLAINLY MARKED. ANY CHANGE IN LOCATION SHALL BE REQUESTED IN WRITING BY THE OWNER OR HIS REPRESENTATIVE.
 - NO REVISIONS SHALL BE MADE IN THESE PLANS WITHOUT THE APPROVAL OF THE COUNTY ENGINEER.
 - USE STANDARD MANHOLE FRAMES AND COVERS, S-A-117, EXCEPT AS NOTED.
 - USE STANDARD STRENGTH PIPE EXCEPT AS NOTED.
 - RESURFACE ALL TRUCK TRAFFIC PAVED AREA TO MEET L. A. COUNTY ROAD DEPT. OR CALIF. STATE HIGHWAY DEPT. REQUIREMENTS IN ACCORDANCE WITH PERMITS.
 - ENCASE FOUR FEET OF SEWER AT POINTS OF INTERFERENCE WITH POLES, S-A-119.
 - HOUSE LATERALS TO BE CONSTRUCTED WITH INVERTS AT PROPERTY LINE 6 FEET BELOW CURB GRADE EXCEPT AS NOTED.
 - ALL STRUCTURES SHALL BE BRICK SEWER STYL. TUBES, S-A-104, EXCEPT AS NOTED.
 - FOR ALLOWABLE LEAKAGE TEST USE FORMULA NO. 5 SPEC. S, SEC. 84.
 - MANHOLE TOPS IN UNIMPROVED RIGHTS-OF-WAY TO BE 6" ABOVE FINISHED GRADE.
 - THE PRIVATE ENGR. IS TO FURNISH THE HOUSE LATERALS DEPTH AT THE PROPERTY LINE BELOW THE TOP OF CURB ELEV. FOR EACH HOUSE LATERAL, ON THE GRADE SHEET.
 - USE METAL FORAMS AND GASKETS, OR "SPREAD-LOCK" OR "SPREAD-SEAL JOINTS" FOR ALL VITRIFIED CLAY PIPE JOINTS PER SPECS. SEC. 36 & 40.

PROFILE ALIGNMENT AND GRADE OF P.C. 4420
 SANITARY SEWERS PAGE 1

TO BE CONSTRUCTED IN
 TRACT No 23096 (26063)

PRIVATE CONTRACT NO. 4420

W.S. 31
 3 SHEETS, 6 PAGES
 SCALE: HORIZ. 1" = 40' VERT. 1" = 4'
 APRIL, 1957

PREPARED IN THE OFFICES OF
 VOORHEES-TRINDLE-WELSON, INC.
 18082 GARDEN GROVE BLVD.
 GARDEN GROVE, CALIF.
 BY: *W. D. ...*
 REG. C. E. NO. 8781

FOR LEGEND SEE PLAN NO. S-A-64

NOTE: GRADES TO WHICH THIS IMPROVEMENT IS TO BE CONSTRUCTED ARE SHOWN ON PLANS AND PROFILES. GRADE POINTS FOR TOP OF CURB, CENTER LINE OF STREET, OR CENTER LINE OF ALLEY ARE SHOWN BY CIRCLES ON PROFILES. AT ALL POINTS BETWEEN DESIGNATED POINTS THE GRADE SHALL BE ESTABLISHED SO AS TO CONFORM TO A STRAIGHT LINE DRAWN BETWEEN SAID DESIGNATED POINTS.

ELEVATIONS ARE IN FEET ABOVE U.S.C. & G.S. SEA LEVEL DATUM OF 1929.

THIS DRAWING AND THE DATA HEREON ARE HEREBY MADE A PART OF THE SPECIFICATIONS.

WORK SHALL BE CONSTRUCTED ACCORDING TO SPECIFICATIONS ON FILE IN THE OFFICE OF THE COUNTY ENGINEER AND SHALL BE PROSECUTED ONLY IN THE PRESENCE OF THE COUNTY ENGINEER.

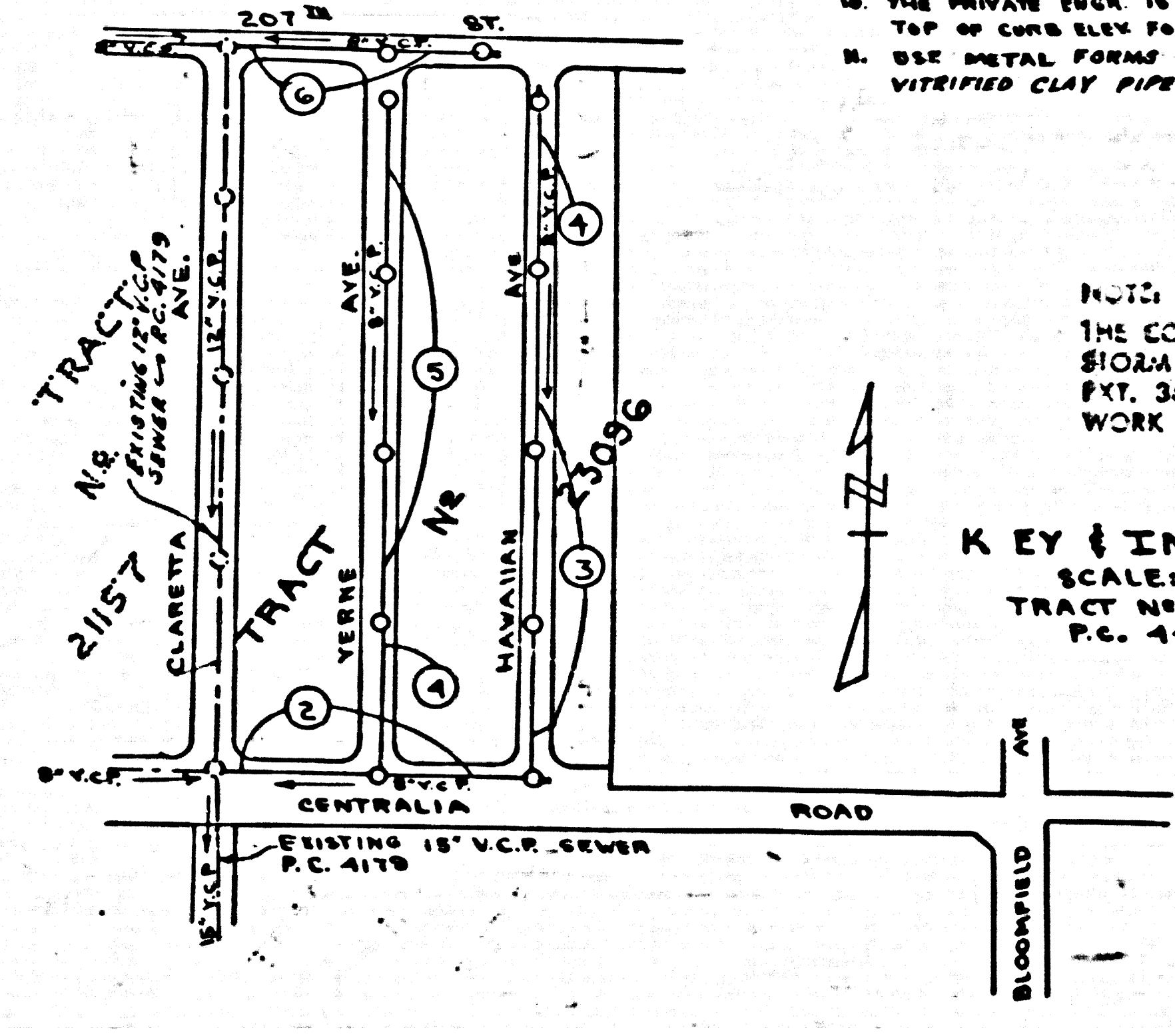
BEFORE WORK CAN BE STARTED, THE CONTRACTOR MUST OBTAIN A PERMIT TO EXCAVATE IN COUNTY STREETS FROM THE L. A. COUNTY ROAD DEPT., DISTRICT 4, AND MAKE A REPORT WITH THE COUNTY ENGINEER, ROOM 324 PAM AMERICAN BUILDING, 125 SO. BROADWAY, SUFFICIENT TO COVER THE COST OF CONSTRUCTION INSPECTION AND RECORD PLANS.

APPROVAL OF THIS PLAN BY THE COUNTY OF LOS ANGELES DOES NOT CONSTITUTE A REPRESENTATION AS TO THE ACCURACY OF THE LOCATION OR THE EXISTENCE OR NON-EXISTENCE OF ANY UNDERGROUND UTILITY PIPE, OR STRUCTURE WITHIN THE LIMITS OF THIS PROJECT. THIS NOTE APPLIES TO ALL PAGES.

IF WORK IS TO BE DONE IN A STATE HIGHWAY, A PERMIT MUST BE OBTAINED FROM THE STATE OF CALIFORNIA, DIVISION OF HIGHWAYS, 120 SOUTH SPRING STREET.

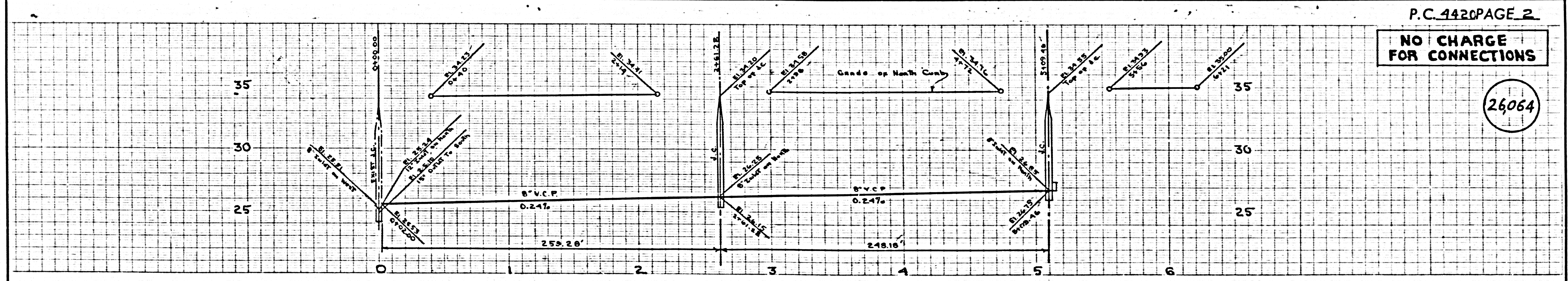
COUNTY OF LOS ANGELES, CALIFORNIA

APPROVED, JOHN A. LAMME, COUNTY ENGINEER
 APPROVED, A. M. BAWN, CHIEF ENGINEER
 BY: *W. D. ...* *W. D. ...*
 SANITATION ENGINEER OFFICIAL ENGINEER
 CHECKED BY: *W. D. ...*
 OFFICE OF COUNTY ENGINEER, REG. C. E. NO. 3440



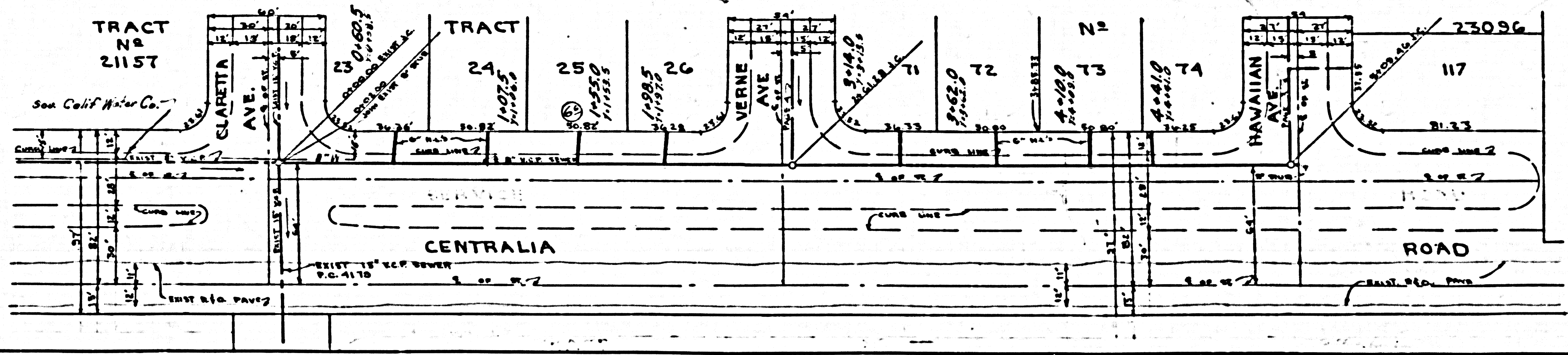
NOTE: THE CONTRACTOR SHALL NOTIFY THE CONSTRUCTION AND STORM DRAIN DIVISION BY TELEPHONE, MADISON 9-4747, EXT. 362, AT LEAST 24 HOURS BEFORE STARTING ANY WORK UNDER THIS CONTRACT.

KEY & INDEX MAP
 SCALE: 1" = 300'
 TRACT NO. 23096
 P.C. 4420



P.C. 4420 PAGE 2
 NO CHARGE FOR CONNECTIONS

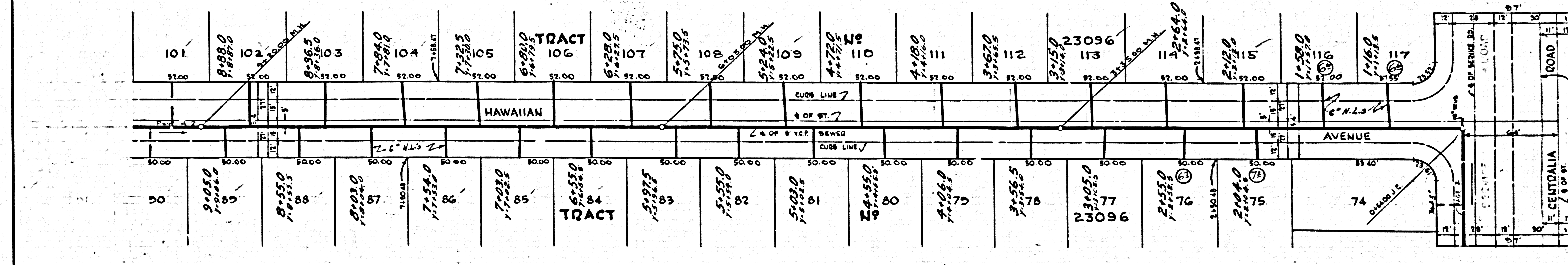
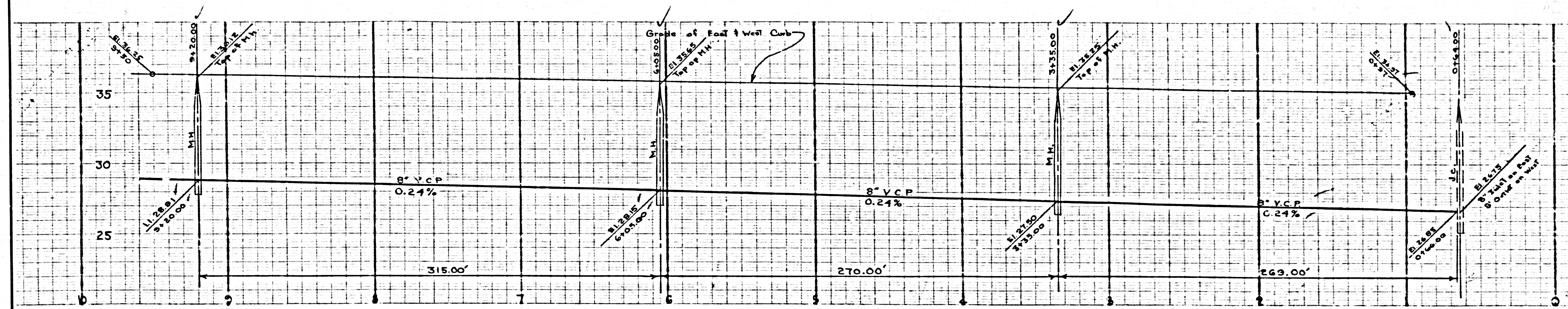
(26064)



PL
 5-21-58

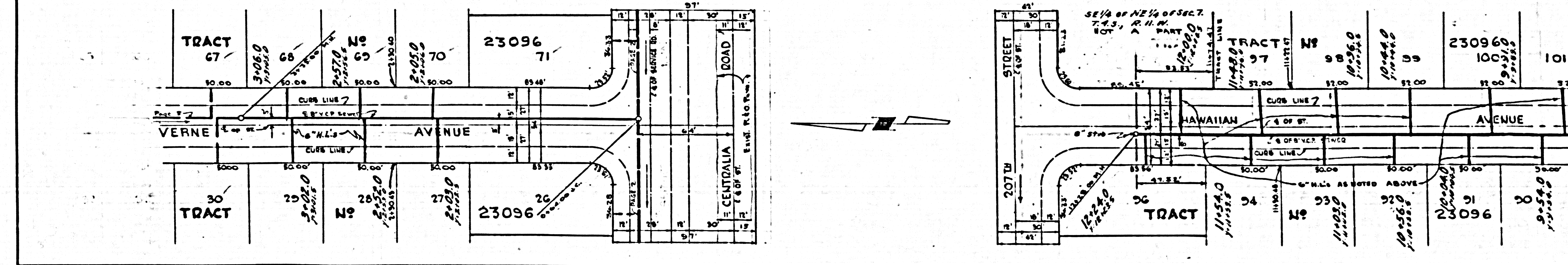
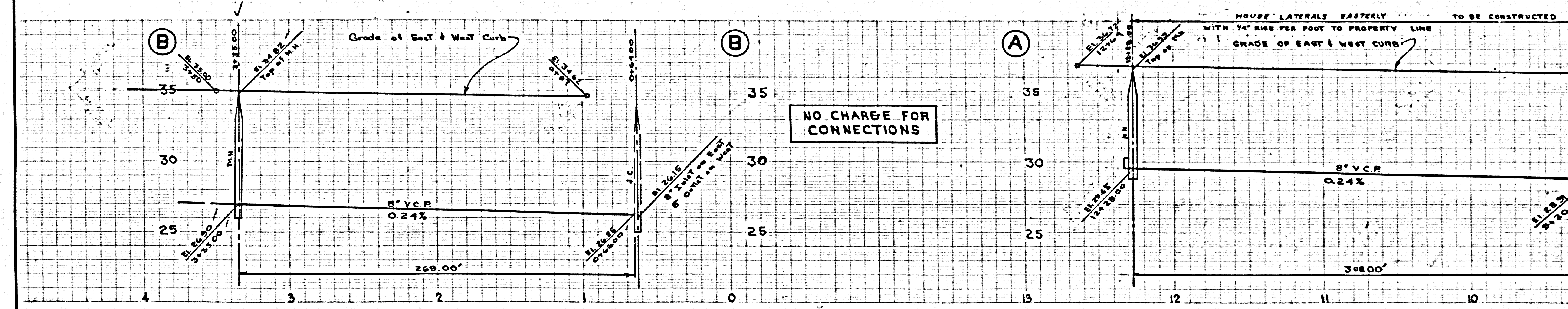
26,065

NO CHARGE FOR CONNECTIONS



26,066

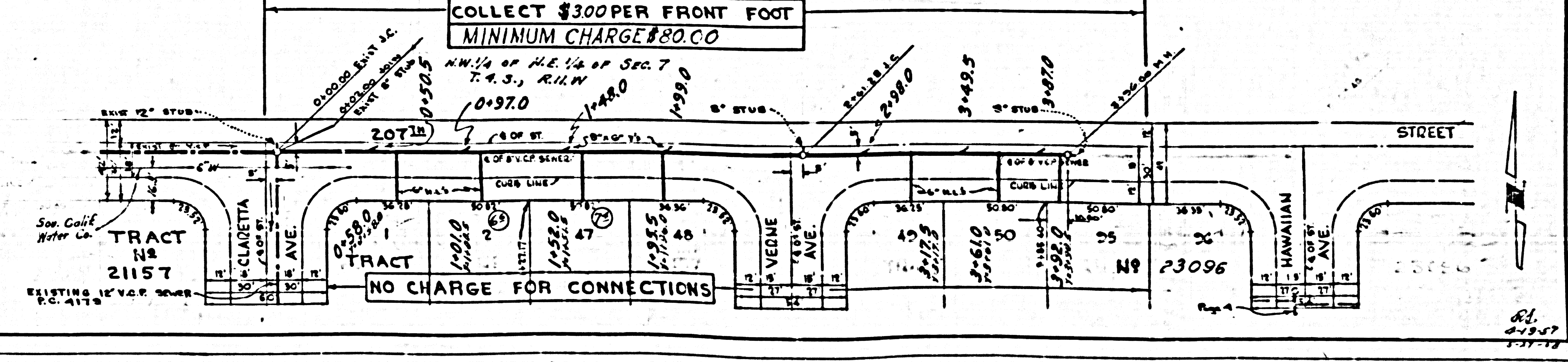
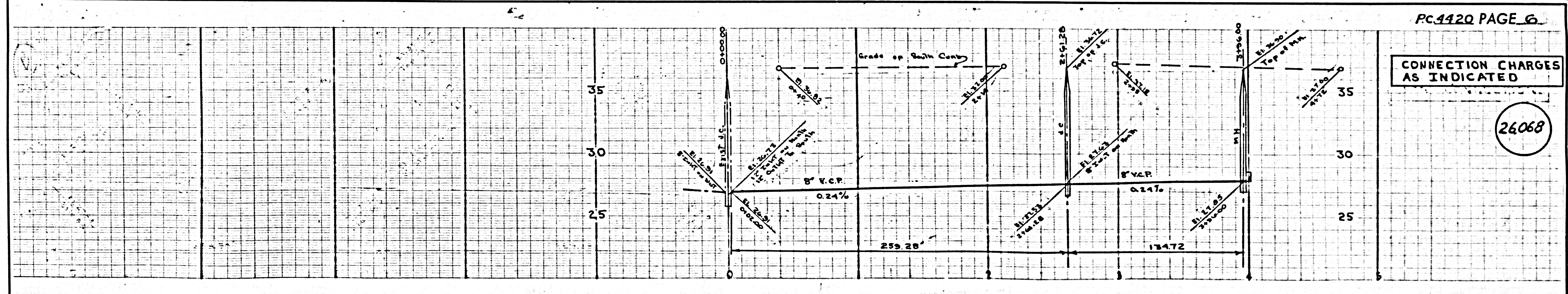
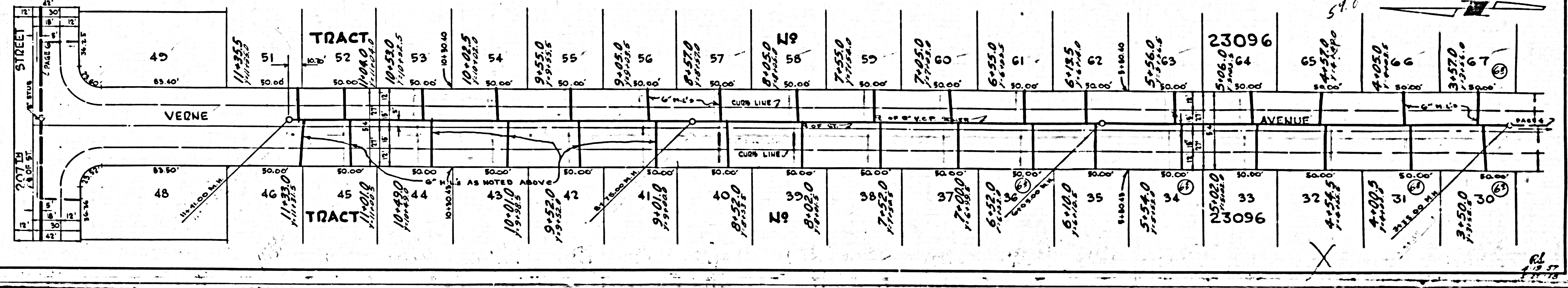
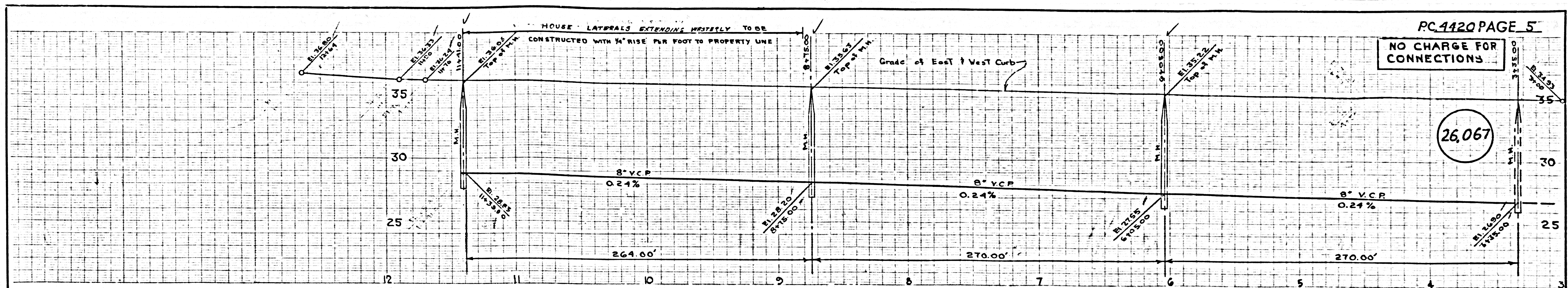
NO CHARGE FOR CONNECTIONS



12641 53082

12641 53082

62 4-19-57 4-17-58



TRACT

S3026

PC 4450