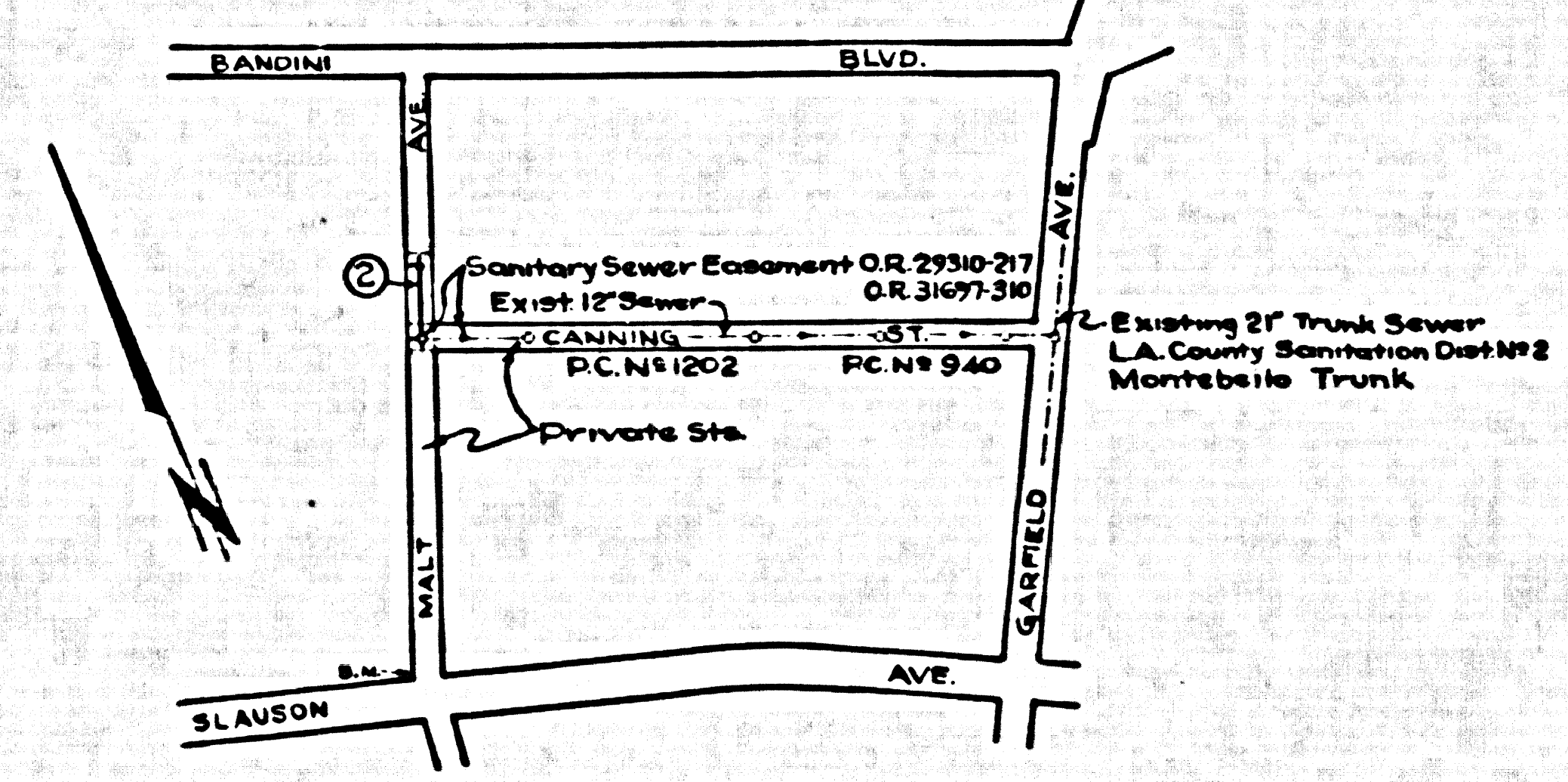


BA N 4-19 ELEV 143.247 C.S.B. 1205-24
 SLAUSON AVE. & MALT AVE.
 C.S.B.C. MON. ST. NO. 10 & SLAUSON AVE.
 22' W/O. E. MALT AVE.

NO CHARGE FOR CONNECTIONS
 7-16-57

EAST LOS ANGELES BLDG. DIST. NO. 6

- NOTES**
- PROVIDE STAKES ON THE PROPERTY LINE OR PROPERTY LINES PRODUCE AT RIGHT ANGLES TO THE SEWER LINE AT THE CENTER LINE OF EACH MANHOLE.
 - NO REPRESENTATIVE OF THE COUNTY ENGINEER WILL SURVEY OR LAYOUT ANY PORTION OF THE WORK.
 - THE OWNER OR HIS AUTHORIZED REPRESENTATIVE SHALL FURNISH THE COUNTY ENGINEER WITH GRADE SHEETS AND STATION FOR ALL HOUSE LATERALS AND V BRANCHES AND SHALL PROVIDE STAKES FOR THEM AT THEIR PROPER LOCATIONS WITH STATIONING PLANNED ALREADY. ANY CHANGE IN LOCATION SHALL BE REQUESTED IN WRITING BY THE OWNER OR HIS REPRESENTATIVE.
 - NO REVISIONS SHALL BE MADE IN THESE PLANS WITHOUT THE APPROVAL OF THE COUNTY ENGINEER.
 - USE STANDARD MANHOLE FRAMES AND COVERS, S.A-117, EXCEPT AS NOTED.
 - USE STANDARD STRENGTH PIPE EXCEPT AS NOTED.
 - USE CEMENT MORTAR FOR ALL VITRIFIED CLAY PIPE JOINTS.
 - RESURFACE ALL TRENCH WITHIN PAVED AREA TO MEET L. A. COUNTY ROAD DEPT., OR CALIF. STATE HIGHWAY DEPT. SPECIFICATIONS IN ACCORDANCE WITH PERMITS.
 - SHOULDER FOUR FEET OF SEWER AT POINTS OF INTERFERENCE WITH POLES, S.A-119.
 - CONCRETE LATERALS TO BE CONSTRUCTED ACCORDING TO SPECIFICATIONS S.A-114, EXCEPT AS NOTED.
 - ALL STRUCTURES SHALL BE BRICK SEWER STRUCTURES, S.A-114, EXCEPT AS NOTED.
 - FOR ALLOWABLE LEAKAGE TEST USE FORMULA NO. 2, SPCCS, SEC. 2.
 - MANHOLE TOPS IN UNIMPROVED RIGHTS-OF-WAY TO BE LEVEL WITH FINISHED GRADE.
 - THE CONTRACTOR SHALL NOTIFY THE CONSTRUCTION AND STORM DRAIN DIVISION BY TELEPHONE NUMBER 475-7121 AT LEAST 24 HRS. BEFORE STARTING ANY WORK UNDER THIS CONTRACT.



INDEX MAP
 SCALE: 1" = 500'
 P.C. 4423

PROFILE ALIGNMENT AND GRADE OF **P.C. 4423**
SANITARY SEWERS PAGE 1

TO BE CONSTRUCTED IN
MALT AVENUE
 FROM
 E OF CANNING STREET
 TO 150 FEET NORTH OF E
PRIVATE CONTRACT NO. 4423

W.S. 36
 1 SHEET 2 PAGES
 SCALE: HORIZ. 1" = 40' VERT. 1" = 4'
 MAY, 1957
 PREPARED IN THE OFFICES OF
CENTRAL MANUFACTURING DISTRICT, INC.

BY Arthur H. Cooke
 REG. C. E. NO. 7799
 FOR LEGEND SEE PLAN NO. S-A-64

NOTE:
 GRADES TO WHICH THIS IMPROVEMENT IS TO BE CONSTRUCTED ARE SHOWN ON PLANS AND PROFILE. GRADE POINTS FOR TOP OF CURB, CENTER LINE OF STREETS, OR CENTER LINE OF ALLEYS ARE SHOWN BY CIRCLES ON PROFILE. AT ALL POINTS BETWEEN DESIGNATED POINTS THE GRADE SHALL BE ESTABLISHED SO AS TO CONFORM TO A STRAIGHT LINE DRAWN BETWEEN SAID DESIGNATED POINTS.
 ELEVATIONS ARE IN FEET ABOVE U.S. S.E.S. SEA LEVEL DATUM OF 1929.
 THIS DRAWING AND THE DATA HEREON ARE HEREBY MADE A PART OF THE SPECIFICATIONS.
 WORK SHALL BE CONSTRUCTED ACCORDING TO SPECIFICATIONS ON FILE IN THE OFFICE OF THE COUNTY ENGINEER AND SHALL BE PROSECUTED ONLY IN THE PRESENCE OF THE COUNTY ENGINEER.
 BEFORE WORK CAN BE STARTED, THE CONTRACTOR MUST OBTAIN A PERMIT TO EXCAVATE IN COUNTY STREETS FROM THE L. A. COUNTY ROAD DEPT., 150 N. 2ND ST. AND MAKE A DEPOSIT WITH THE COUNTY ENGINEER, ROOM 224 PAV. AMERICAN BUILDING, 212 1/2 BROADWAY, SUFFICIENT TO COVER THE COST OF CONSTRUCTION INSPECTION AND RECORD PLANS.
 APPROVAL OF THIS PLAN BY THE COUNTY OF LOS ANGELES DOES NOT CONSTITUTE A REPRESENTATION AS TO THE ACCURACY OF THE LOCATION OR THE EXISTENCE OR NON-EXISTENCE OF ANY UNDERGROUND UTILITY PIPE, OR STRUCTURE WITHIN THE LIMITS OF THIS PROJECT. THIS NOTE APPLIES TO ALL PAGES.
 IF WORK IS TO BE DONE IN A STATE HIGHWAY, A PERMIT MUST BE OBTAINED FROM THE STATE OF CALIFORNIA, DIVISION OF HIGHWAYS, 130 SOUTH SPRING STREET.

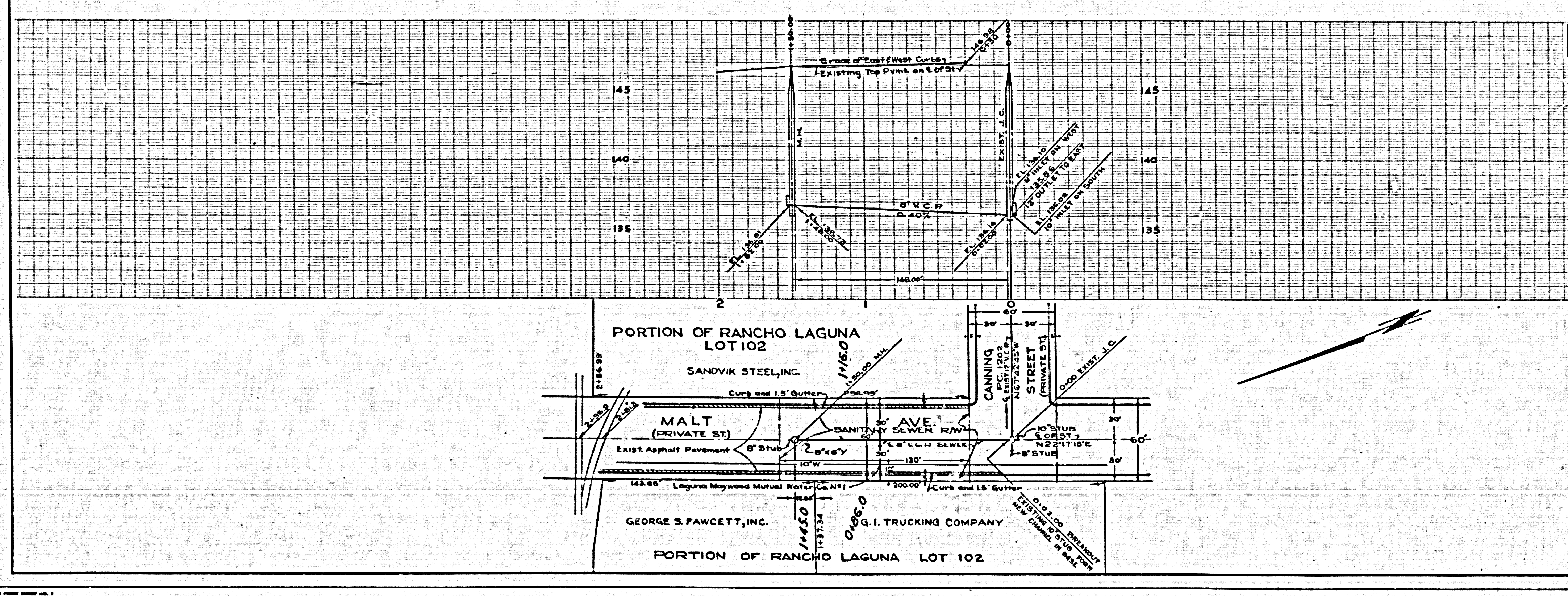
COUNTY OF LOS ANGELES, CALIFORNIA
 APPROVED, JOHN A. LAMBE, COUNTY ENGINEER
 APPROVED, A. M. RAWN, CHIEF ENGINEER
 BY G. H. Hushon BY A. M. Rawn
 SANITATION ENGINEER OFFICE ENGINEER
 CHECKED BY W. J. White 7-16-57
 OFFICE OF COUNTY ENGINEER, REG. C. E. NO. 7936

APPROVED BY
 INDUSTRIAL WASTE DIVISION
 BY Arthur H. Cooke DATE 6/1/57

P.C. 4423 PAGE 2

NO CHARGE FOR CONNECTIONS

24839



RD
 5-31-57