

The record inlet invert E.I. of the M.H. at T+2700, P.C. 844 on St. Andrews Place is used as the basis of E.I. shown on these plans.

LENNOX BLDG. DIST. NO. 7

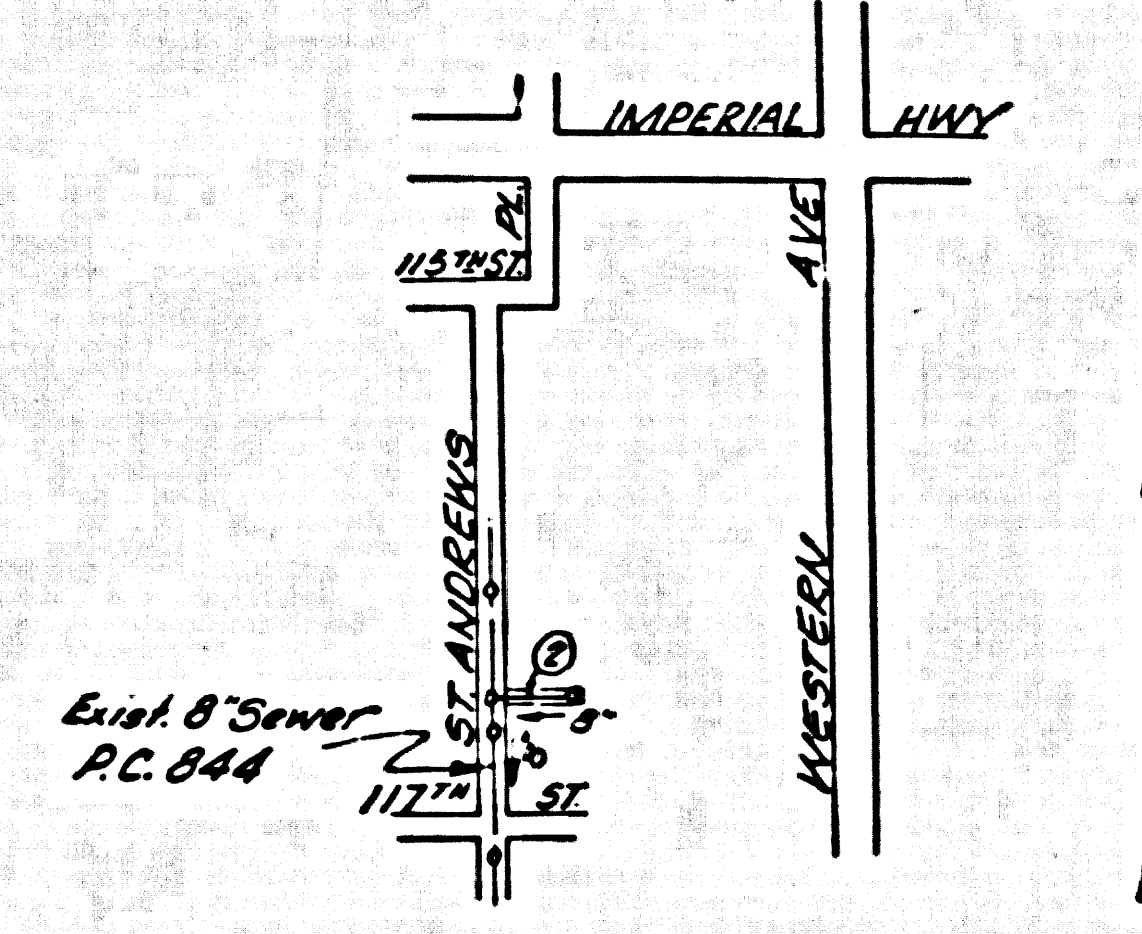
PROFILE ALIGNMENT AND GRADE OF P.C. 4430  
 SANITARY SEWERS PAGE 1  
 TO BE CONSTRUCTED IN  
 SANITARY SEWER R/W (24,713)  
 EAST OF ST. ANDREWS PLACE

PRIVATE CONTRACT NO. 4430

W.S. 26  
 1 SHEETS, 2 PAGES  
 SCALE: VERT. 1"=4'  
 HORIZ. 1"=40'  
 MAY, 1957  
 PREPARED IN THE OFFICES OF  
 OLSON SURVEYING SERVICE

BY: *Carl H. Peterson*  
 REG. C. E. NO. 14627  
 FOR LEGEND SEE PLAN NO. S-A-64

- NOTES
- PROVIDE STAKES ON THE PROPERTY LINE OR PROPERTY LINES PRODUCED AT 90° ANGLES TO THE SEWER LINE AT THE CENTER LINE OF EACH MANHOLE.
  - NO REPRESENTATIVE OF THE COUNTY ENGINEER WILL SURVEY OR LAY OUT ANY PORTION OF THE WORK.
  - THE OWNER OR HIS AUTHORIZED REPRESENTATIVE SHALL FURNISH THE COUNTY ENGINEER WITH GRADE SHEETS AND STATION FOR ALL HOUSE LATERALS AND Y BRANCHES AND SHALL PROVIDE STAKES FOR THEM AT THEIR PROPER LOCATIONS WITH STATIONS PLAINLY MARKED. ANY CHANGE IN LOCATION SHALL BE REQUESTED IN WRITING BY THE OWNER OR HIS REPRESENTATIVE.
  - NO REVISIONS SHALL BE MADE IN THESE PLANS WITHOUT THE APPROVAL OF THE COUNTY ENGINEER.
  - USE STANDARD MANHOLE FRAMES AND COVERS, S-A-117, EXCEPT AS NOTED.
  - USE STANDARD STRENGTH PIPE EXCEPT AS NOTED.
  - USE CHIMNEY HEIGHTS FOR ALL VENTED CLAY PIPE JOINTS.
  - FINISH ALL TRENCH WITHIN PAVED AREA TO MEET L. A. COUNTY ROAD DEPT., OR CALIF. STATE HIGHWAY DEPT. REQUIREMENTS IN ACCORDANCE WITH PERMITS.
  - ENCASE FOUR FEET OF SEWER AT POINTS OF INTERFERENCE WITH POLES, S-A-119.
  - HOUSE LATERALS TO BE CONSTRUCTED WITH INVERTS AT PROPOSED LINE. MANHOLE-GROUND GRADE EXCEPT AS NOTED.
  - ALL STRUCTURES SHALL BE BRICK SEWER STRUCTURES, S-A-104, EXCEPT AS NOTED.
  - FOR ALLOWABLE LEAKAGE TEST USE FORMULA NO. 1048, SPEC. SEC. III.
  - MANHOLE TOPS IN UNIMPROVED RIGHTS-OF-WAY TO BE LEAVE WITH FINISHED GRADE.



INDEX MAP  
 P.C. 4430  
 SCALE: 1"=600'

NO CHARGE FOR CONNECTIONS  
*Call Main Office*

DO NOT ISSUE PERMITS UNTIL R/W IS ACCEPTED - CALL MAIN OFFICE

NOTE: GRADES TO WHICH THIS IMPROVEMENT IS TO BE CONSTRUCTED ARE SHOWN ON PLANS AND PROFILES. GRADE POINTS FOR TOP OF CURBS, CENTER LINE OF STREETS, OR CENTER LINE OF ALLEYS ARE SHOWN BY CIRCLES ON PROFILES. AT ALL POINTS BETWEEN REGULATED POINTS THE GRADE SHALL BE ESTABLISHED SO AS TO CONFORM TO A STRAIGHT LINE DRAWN BETWEEN SAID DESIGNATED POINTS.

EXPLANATIONS ARE IN FEET ABOVE U.S.C. & G.S. LEVEL DATUM OF 1929.

THIS DRAWING AND THE DATA HEREON ARE HEREBY MADE A PART OF THE SPECIFICATIONS.

BEFORE WORK CAN BE STARTED, THE CONTRACTOR MUST OBTAIN A PERMIT TO EXCAVATE IN COUNTY STREETS AND SHALL BE PROSECUTED ONLY IN THE PRESENCE OF THE COUNTY ENGINEER.

APPROVAL OF THIS PLAN BY THE COUNTY OF LOS ANGELES DOES NOT CONSTITUTE A REPRESENTATION AS TO THE ACCURACY OF THE LOCATION OF OR THE EXISTENCE OR NON-EXISTENCE OF ANY UNDERGROUND UTILITY PIPE, OR STRUCTURE WITHIN THE LIMITS OF THIS PROJECT. THIS NOTE APPLIES TO ALL PAGES.

IF WORK IS TO BE DONE IN A STATE HIGHWAY, A PERMIT MUST BE OBTAINED FROM THE STATE OF CALIFORNIA, DIVISION OF HIGHWAYS, 138 SOUTH SPRING STREET.

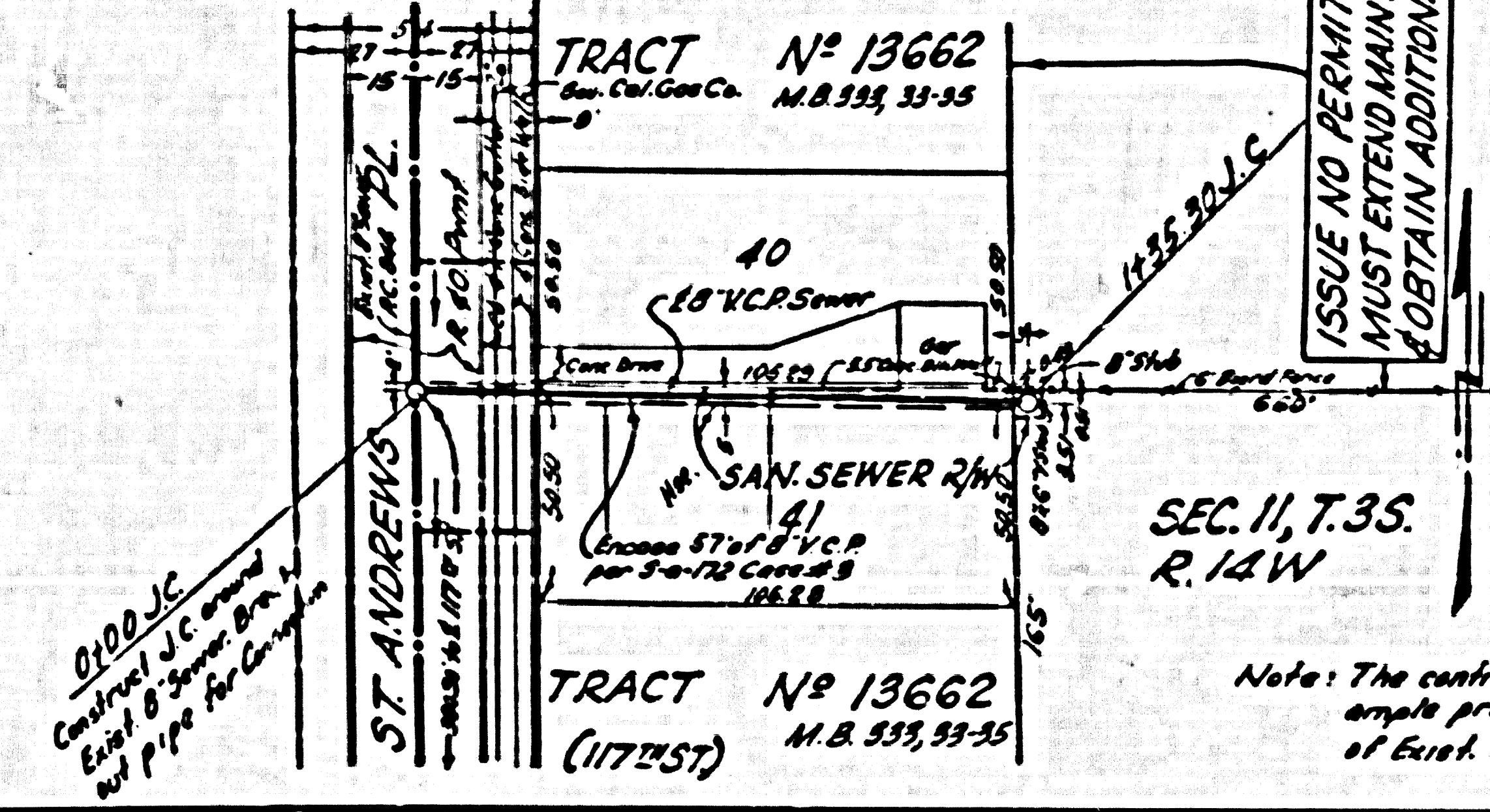
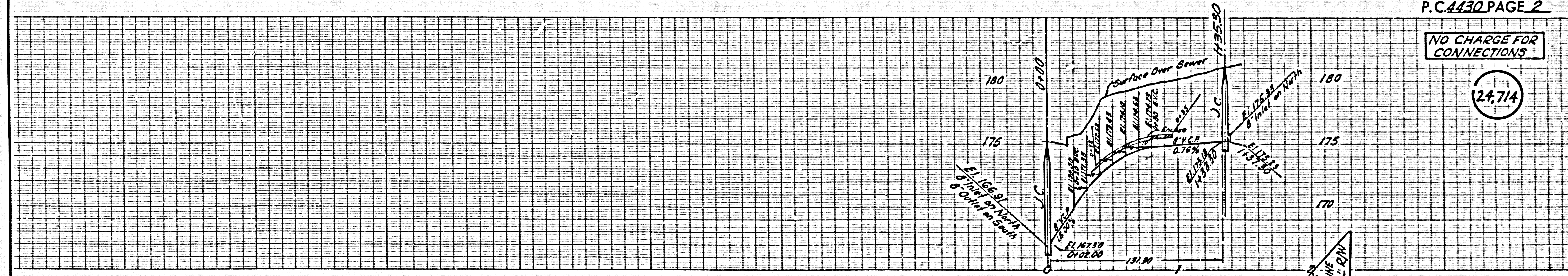
COUNTY OF LOS ANGELES, CALIFORNIA

APPROVED, JOHN A. LAMBE, COUNTY ENGINEER  
 APPROVED, A. M. BAWN, CHIEF ENGINEER  
 CO. SEAL NO. 5  
 BY: *Carl H. Peterson* BY: *A. M. Bawn*  
 SANITATION ENGINEER OFFICE ENGINEER  
 CHECKED BY: *Carl H. Peterson* 5/15/57  
 OFFICE OF COUNTY ENGINEER, REG. C. E. NO. 14627  
 APPROVED: *Carl H. Peterson* 5/15/57  
 INDUSTRIAL WASTE DIV. DATE

P.C. 4430 PAGE 2

NO CHARGE FOR CONNECTIONS

(24,714)



SEC. 11, T. 35. R. 14W

Note: The contractor shall provide ample protection for foundations of Exist. Bldgs.