

BENCH MARK: B.M. 9-3 STD. CO. SURV. MARK MARKED 25.11 SET IN CONC. 4" BELOW SURFACE ON APPROX. E. OF ESCALONA RD. 72.2 AL OF E. OF STAGE RD. IN WELL PROTECTED BY CAST IRON COVER PER C.S.F.S. 1204-6 L.A.CO. 1952 AD-1, EL. 109.862

NORWALK BLDG. DIST. NO. 42

PROFILE ALIGNMENT AND GRADE OF **P.C. 4434**
SANITARY SEWERS PAGE **1**
 TO BE CONSTRUCTED IN **(25/23)**
LA MIRADA BUSINESS CENTER

PRIVATE CONTRACT NO. 4434
 W.S. 94

2 SHEETS, 3 PAGES
 SCALE: VERT. 1"=4' HORIZ. 1"=40'
 MAY, 1957
 PREPARED IN THE OFFICES OF

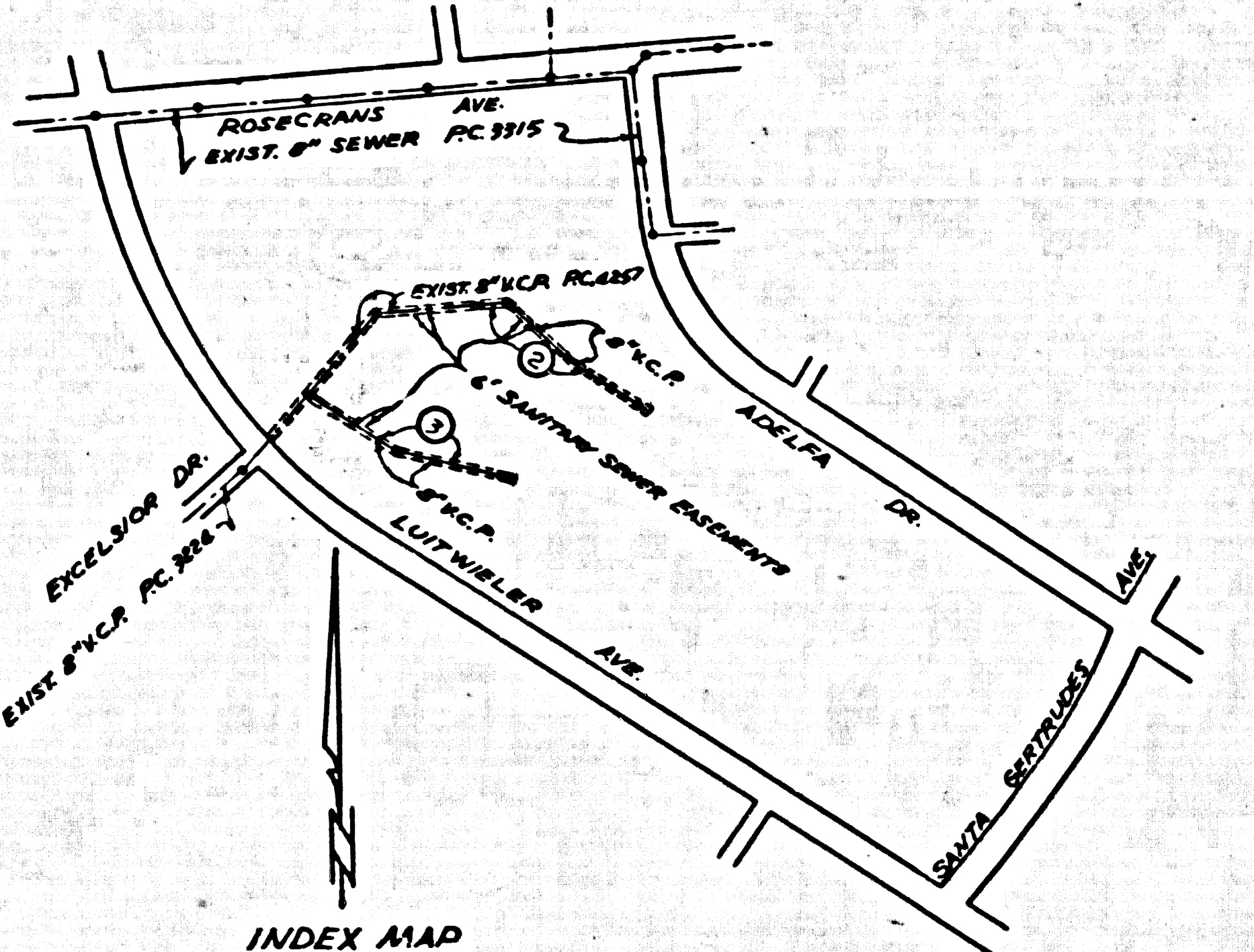
VICTOR GRUEN & ASSOCIATES
 BY: *Victor Gruen*
 REG. C. E. NO. 6485

FOR LEGEND SEE PLAN NO. S-A-64

- NOTES:
- PROVIDE STAKES ON THE PROPERTY LINE OR PROPERTY LINE PRODUCED AT RIGHT ANGLES TO THE SEWER LINE AT THE CENTER LINE OF EACH MANHOLE.
 - NO REPRESENTATIVE OF THE COUNTY ENGINEER WILL SURVEY OR LAYOUT ANY PORTION OF THE WORK.
 - THE OWNER OR HIS AUTHORIZED REPRESENTATIVE SHALL FURNISH THE COUNTY ENGINEER WITH GRADE SHEETS AND STATIONING FOR ALL HOUSE LATERALS AND Y BRANCHES AND SHALL PROVIDE STAKES FOR THEM AT THEIR PROPER LOCATIONS WITH STATIONING AND PLANNING MARKS. ANY CHANGE IN LOCATION SHALL BE REQUESTED IN WRITING BY THE OWNER OR HIS REPRESENTATIVE.
 - NO REVISIONS SHALL BE MADE IN THESE PLANS WITHOUT THE APPROVAL OF THE COUNTY ENGINEER.
 - USE STANDARD MANHOLE FRAMES AND COVERS, S-A-117, EXCEPT AS NOTED.
 - USE STANDARD STRENGTH PIPE EXCEPT AS NOTED.
 - USE CHAMFRED JOINTS FOR ALL WITNESS CLAY PIPE JOINTS.
 - RESURFACE ALL TRENCHES WITHIN PAVED AREA TO MEET L. A. COUNTY ROAD DEPT., OR CALIF. STATE HIGHWAY DEPT. REQUIREMENTS IN ACCORDANCE WITH PERMITS.
 - ENCASE FOUR FEET OF SEWER AT POINTS OF INTERFERENCE WITH POLES, S-A-119.
 - HOUSE LATERALS TO BE CONSTRUCTED WITH SEWERAS AT PROPOSED LINE PER SHOW-GRADE GRABS EXCEPT AS NOTED.
 - ALL STRUCTURES SHALL BE BRICK SEWER STRUCTURES, S-A-104, EXCEPT AS NOTED.
 - FOR ALLOWABLE LEAKAGE TEST USE FORMULA NO. 1 SPEC'S, SEC. 64.
 - MANHOLE TOPS IN UNIMPROVED RIGHTS-OF-WAY TO BE 4" ABOVE FINISHED GRADE.

NOTE:
 THE CONTRACTOR SHALL NOTIFY THE CONSTRUCTION / STORM DRAIN DIVISION BY TELEPHONE, MADISON 9-6167, EXT. 364, AT LEAST 24 HRS. BEFORE STARTING ANY WORK UNDER THIS CONTRACT.

NO CHARGE FOR CONNECTIONS
 -24 (Circle) 7-23-57



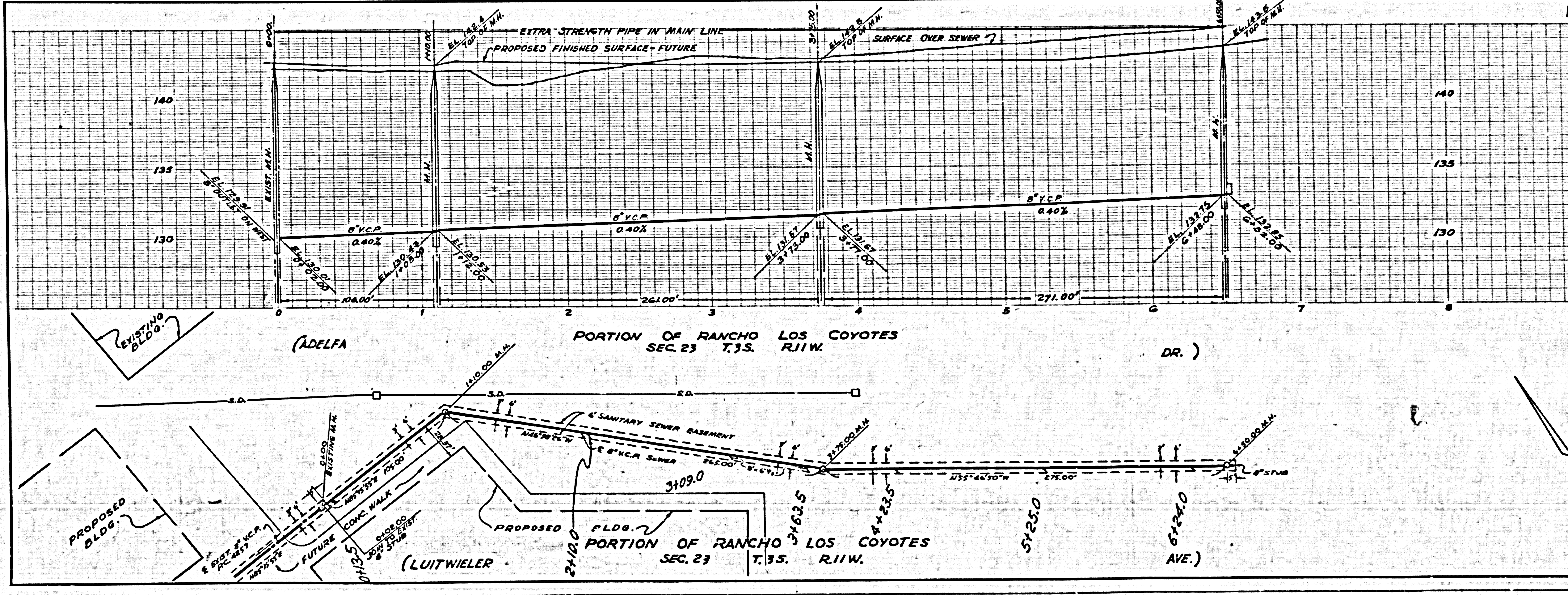
NOTE:
 GRADES TO WHICH THE IMPROVEMENT IS TO BE CONSTRUCTED ARE SHOWN ON PLANS AND PROFILES. GRADE POINTS FOR TOP OF CURBS, CENTER LINE OF STREETS, OR CENTER LINE OF ALLEYS ARE SHOWN BY CIRCLES ON PROFILES. AT ALL POINTS BETWEEN DESIGNATED POINTS THE GRADE SHALL BE ESTABLISHED TO BE TO CONFORM TO A STRAIGHT LINE BETWEEN SAID DESIGNATED POINTS.
 ELEVATIONS ARE IN FEET ABOVE U.S.C. & G.S. MEAN SEA LEVEL UNLESS OTHERWISE NOTED.
 THIS DRAWING AND THE DATA HEREON ARE HEREBY MADE A PART OF THE SPECIFICATIONS.
 WORK SHALL BE CONSTRUCTED ACCORDING TO SPECIFICATIONS ON FILE IN THE OFFICE OF THE COUNTY ENGINEER AND SHALL BE PROSECUTED ONLY IN THE PRESENCE OF THE COUNTY ENGINEER.
 BEFORE WORK CAN BE STARTED, THE CONTRACTOR MUST OBTAIN A PERMIT TO EXCAVATE IN COUNTY STREETS FROM THE L. A. COUNTY ROAD DEPT., 158 W. 5TH ST. AND MAKE A REPORT WITH THE COUNTY ENGINEER, ROOM 124 TOWN AMERICAN BLDG., RMD. 358 501, BROADWAY SUPPLEMENT TO COVER THE COST OF CONSTRUCTION INSPECTION AND RECORD PLANS.
 APPROVAL OF THIS PLAN BY THE COUNTY OF LOS ANGELES DOES NOT CONSTITUTE A REPRESENTATION AS TO THE ACCURACY OF THE LOCATION OF OR THE EXISTENCE OR NON-EXISTENCE OF ANY UNDERGROUND UTILITY PIPE, OR STRUCTURE WITHIN THE LIMITS OF THIS PROJECT THIS NOTE APPLIES TO ALL PAGES.
 IF WORK IS TO BE DONE IN A STATE HIGHWAY, A PERMIT MUST BE OBTAINED FROM THE STATE OF CALIFORNIA, DIVISION OF HIGHWAYS, 120 SOUTH SPRING STREET.

COUNTY OF LOS ANGELES, CALIFORNIA
 APPROVED, JOHN A. LAMBE, COUNTY ENGINEER
 APPROVED, A. M. BAWN, CHIEF ENGINEER
 BY: *J. A. Lambe* (SEAL) DATE: *5/1/57*
 BY: *A. M. Bawn* (SEAL) DATE: *5/1/57*
 CHECKED BY: *Victor Gruen* DATE: *5/1/57*
 OFFICE OF COUNTY ENGINEER, 200 S. G. & NO. 2406
 APPROVED BY INDUSTRIAL WASTE DIVISION
 BY: *Arthur J. Vich* DATE: *6/1/57*

P.C. 4434 PAGE 2

NO CHARGE FOR CONNECTIONS

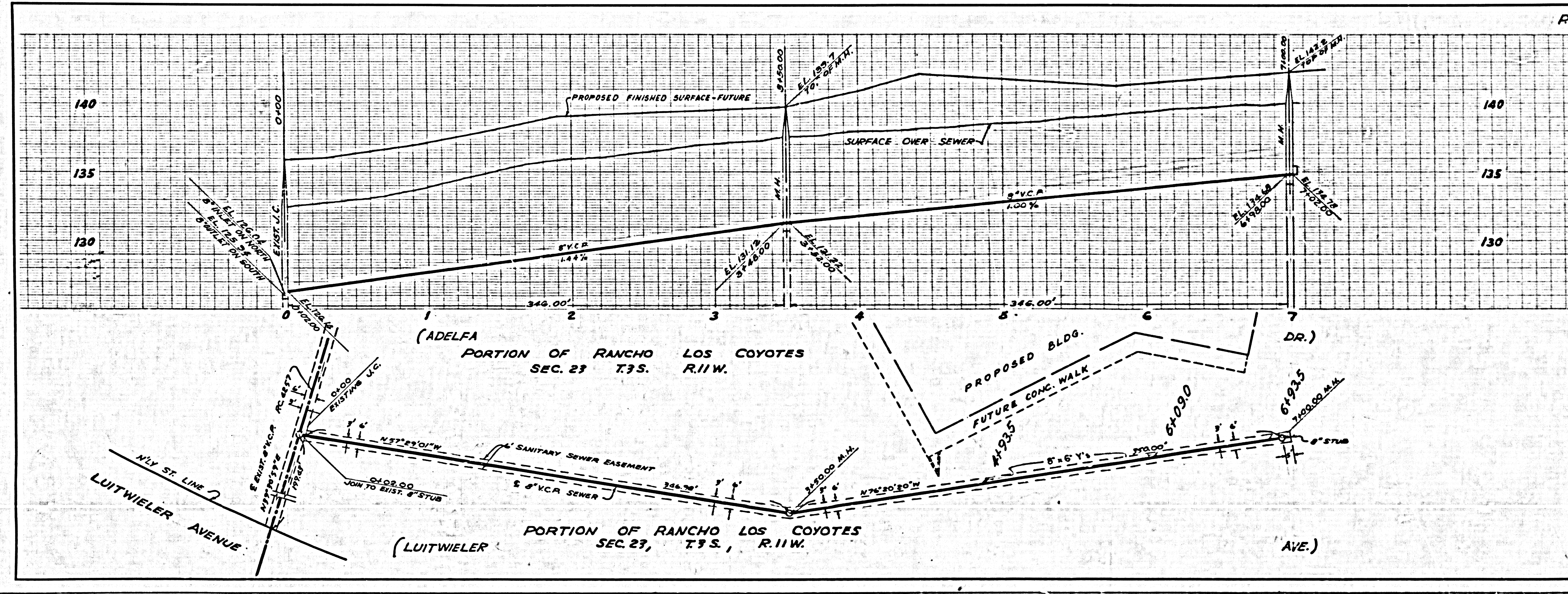
(25/24)



P.C. 4434

N'S CHARGE FOR CONNECTIONS

25,125



U. S. G. 100 IN. GAL. BLUE PRINT SHEET NO. 2

5