

Temple City
 PUENTE BLDG. DIST. NO. 2

PROFILE ALIGNMENT AND GRADE OF P.C. 4439
 SANITARY SEWERS PAGE 1
 TO BE CONSTRUCTED IN

RUSH STREET
 PRIVATE CONTRACT NO. 4439

W.S. 37
 1 SHEET, 2 PAGES

SCALE: HORIZ. 1" = 40' MAY, 1957
 PREPARED IN THE OFFICES OF
 ADAMS & ELLS ENGINEERS

By John R. Adams REG. E. NO. 1849
 FOR LEGEND SEE PLAN NO. S-A-64

- NOTES:
- PROVIDE STAKES ON THE PROPERTY LINE OR PROPERTY LINES PRODUCED AT RIGHT ANGLES TO THE SEWER LINE AT THE CENTER LINE OF EACH MANHOLE.
 - NO REPRESENTATIVE OF THE COUNTY ENGINEER WILL SURVEY OR LAYOUT ANY PORTION OF THE WORK.
 - THE OWNER OR HIS AUTHORIZED REPRESENTATIVE SHALL FURNISH THE COUNTY ENGINEER WITH GRADE SHEETS AND STATIONING FOR ALL HOUSE LATERALS AND Y BRANCHES AND SHALL PROVIDE STAKES FOR THEM AT THESE PROPER LOCATIONS WITH STATIONING PLAINLY MARKED. ANY CHANGE IN LOCATION SHALL BE REQUESTED IN WRITING BY THE OWNER OR HIS REPRESENTATIVE.
 - NO REVISIONS SHALL BE MADE IN THESE PLANS WITHOUT THE APPROVAL OF THE COUNTY ENGINEER.
 - USE STANDARD MANHOLE FRAMES AND COVERS, S-A-117, EXCEPT AS NOTED.
 - USE STANDARD STRENGTH PIPE EXCEPT AS NOTED.
 - USE JOINT COMPANION FOR ALL VITRIFIED CLAY PIPE JOINTS.
 - RESURFACE ALL TRENCH WITHIN PAVED AREA TO MEET L. A. COUNTY ROAD DEPT., OR CALIF. STATE HIGHWAY DEPT. REQUIREMENTS IN ACCORDANCE WITH PERMITS.
 - ENCASE FOUR FEET OF SEWER AT POINTS OF INTERFERENCE WITH POLES, S-A-119.
 - HOUSE LATERALS TO BE CONSTRUCTED WITH INVERTS AT PROPERTY LINE 6 FEET BELOW CURB GRADE EXCEPT AS NOTED.
 - ALL STRUCTURES SHALL BE BRICK SEWER STRUCTURES, S-A-104, EXCEPT AS NOTED.
 - FOR ALLOWABLE LEAKAGE TEST USE FORMULA NO. 2, SPEC. SEC. 64.
 - MANHOLE TOPS TO BE LEVEL WITH FINISHED GRADE.
 - THE PRIVATE ENGINEER SHALL FURNISH THE HOUSE LATERAL DEPTH AT THE PROPERTY LINE BELOW THE GRADE OF 6 OF STREET FOR EACH HOUSE LATERAL ON THE GRADE SHEET.

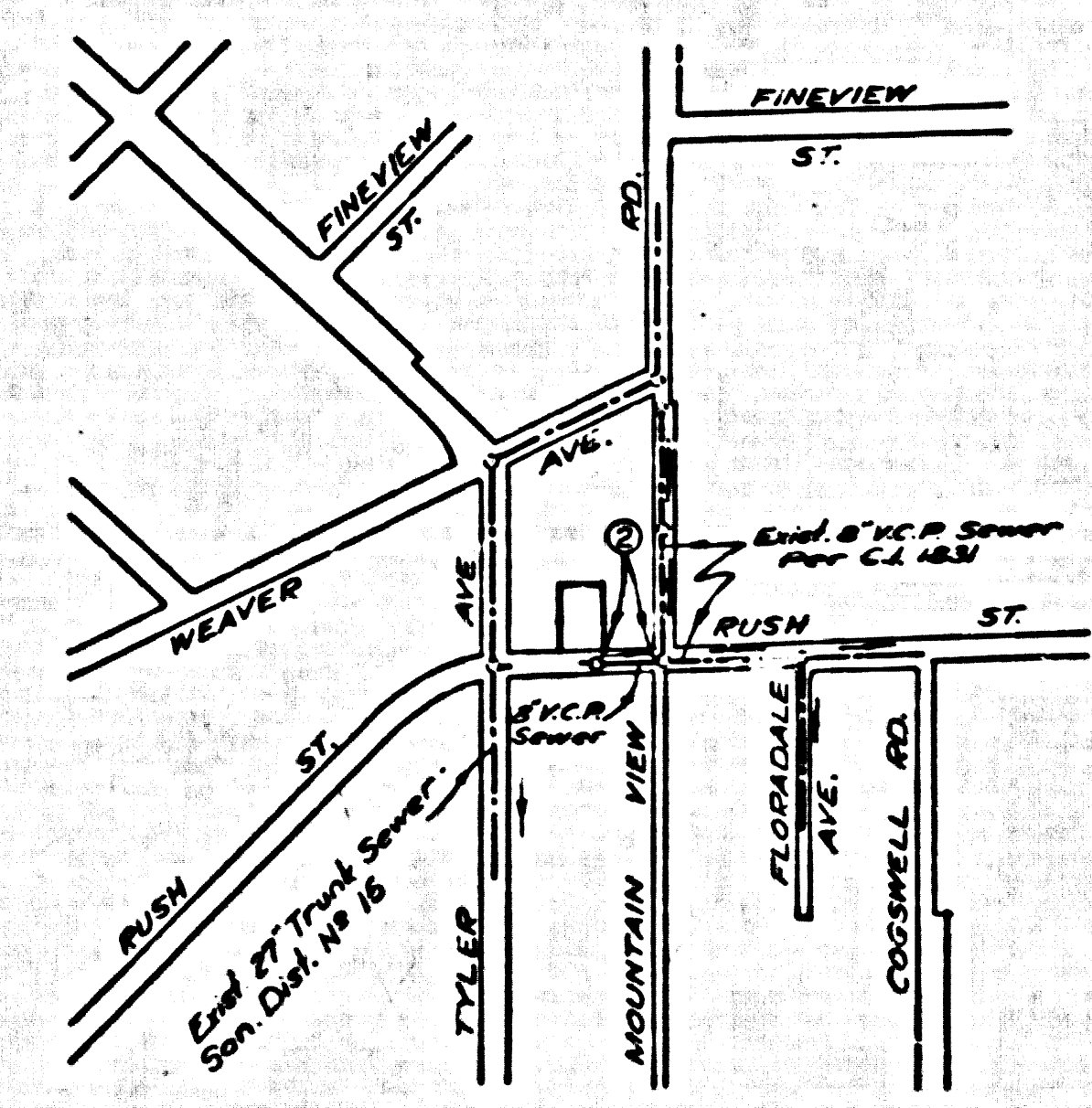
NOTE:
 THE CONTRACTOR SHALL NOTIFY THE CONSTRUCTION & STORM DRAIN DIVISION BY TELEPHONE, MADISON 94741, EXT. 362, AT LEAST 24 HOURS BEFORE STARTING ANY WORK UNDER THIS CONTRACT.

CONNECTION CHARGES AS INDICATED
L. Adams 6-27-57

NOTE:
 GRADES TO WHICH THIS IMPROVEMENT IS TO BE CONSTRUCTED ARE SHOWN ON PLANS AND PROFILES. GRADE POINTS FOR TOP OF CURB, CENTER LINE OF STREETS, OR CENTER LINE OF ALLEYS ARE SHOWN BY CIRCLES ON PROFILES. AT ALL POINTS BETWEEN DESIGNATED POINTS THE GRADE SHALL BE ESTABLISHED SO AS TO CONFORM TO A STRAIGHT LINE DRAWN BETWEEN SAID DESIGNATED POINTS.
 ELEVATIONS ARE IN FEET ABOVE U.S.C. & G.S. SEA LEVEL DATUM OF 1929.
 THIS DRAWING AND THE DATA HEREON ARE HEREBY MADE A PART OF THE SPECIFICATIONS.
 BEFORE WORK CAN BE STARTED, THE CONTRACTOR MUST OBTAIN A PERMIT TO EXCAVATE IN COUNTY STREETS AND SHALL BE PROSECUTED ONLY IN THE PRESENCE OF THE COUNTY ENGINEER.
 WORK SHALL BE CONSTRUCTED ACCORDING TO SPECIFICATIONS ON FILE IN THE OFFICE OF THE COUNTY ENGINEER AND SHALL BE A COUNTY ROAD DEPT., 108 W. 2ND ST. AND MAKE A DEPOSIT WITH THE COUNTY ENGINEER, ROOM 234 PAN AMERICAN BUILDING, 315 SO. BROADWAY SUBJECT TO THE COST OF CONSTRUCTION INSPECTION AND RECORD PLANS.
 APPROVAL OF THIS PLAN BY THE COUNTY OF LOS ANGELES DOES NOT CONSTITUTE A REPRESENTATION AS TO THE ACCURACY OF THE LOCATION OR OF THE EXISTENCE OR NON-EXISTENCE OF ANY UNDERGROUND UTILITY PIPE, OR STRUCTURE WITHIN THE LIMITS OF THIS PROJECT. THIS NOTE APPLIES TO ALL PAGES.
 IF WORK IS TO BE DONE IN A STATE HIGHWAY, A PERMIT MUST BE OBTAINED FROM THE STATE OF CALIFORNIA, DIVISION OF HIGHWAYS, 120 SOUTH SPRING STREET.

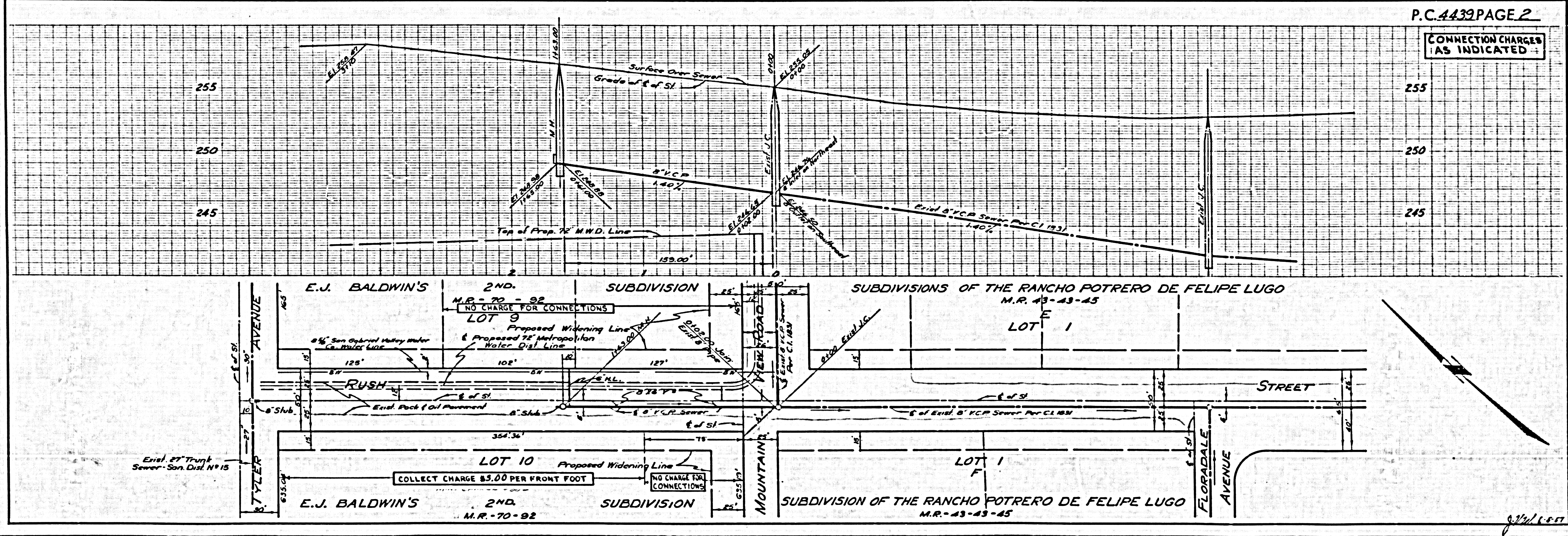
COUNTY OF LOS ANGELES, CALIFORNIA

APPROVED, JOHN A. LAMBE, COUNTY ENGINEER
 APPROVED, A. M. BAWIN, CHIEF ENGINEER
 BY B. J. Hughes SANITATION ENGINEER
 BY A. Postman OFFICE ENGINEER
 CHECKED BY W. White 6-28-57
 OFFICE OF COUNTY ENGINEER, Rm. C & E, NO. 34-26

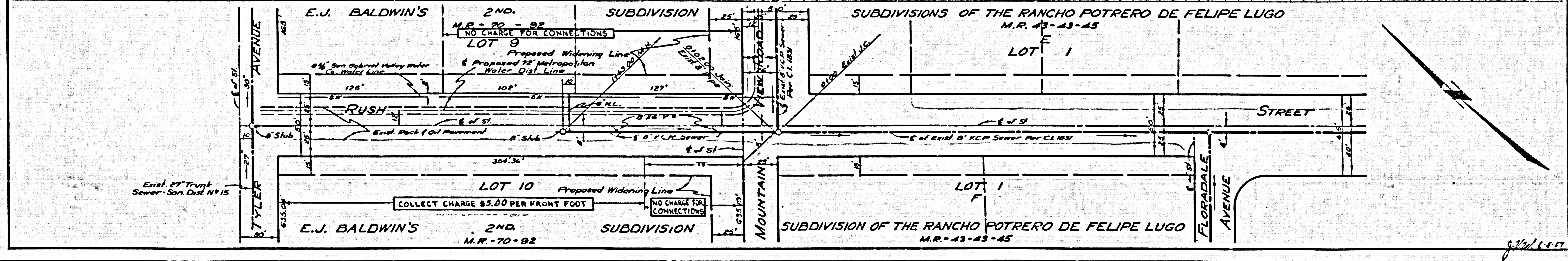


LOCATION MAP
 SCALE 1" = 400'
 P.C. 4439

B.M. M.E.-56, Elev. 261.998 F.B. 1728 pg. 39
 Tyler Ave. and Weaver Ave., N.W. cor.
 D.I. spt. in S.E. cor. conc. drive to oil sbs. #2101



P.C. 4439 PAGE 2
 CONNECTION CHARGES AS INDICATED



6/27/57