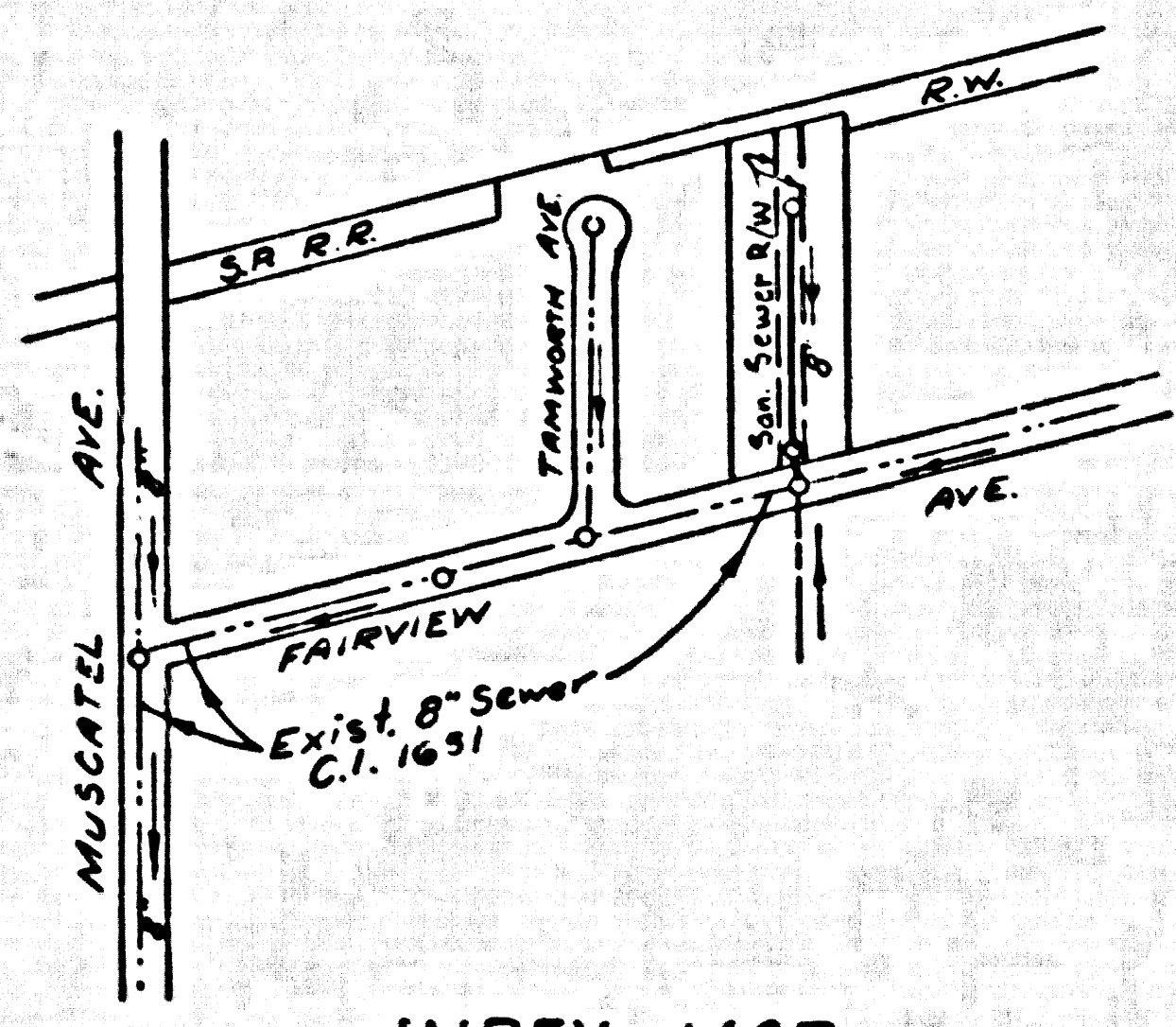


TEMPLE CITY BLDG. DIST. NO. 5

PROFILE ALIGNMENT AND GRADE OF P.C. 4447
 SANITARY SEWERS PAGE 1
 TO BE CONSTRUCTED IN
 R/W NORTH OF FAIRVIEW 25,256

B.M. T.F. 71 Elev 540.954 C.S.F.B. 1734 pg. 63
 Lotus Ave. & Fairview Ave. N.E. Cor.
 31.5pk. in curb 4' N of N. end curb return



INDEX MAP
 SCALE 1"=300'
 P.C. 4447

NO CHARGE FOR CONNECTIONS
 L. Curtis 8-12-57

- NOTES:
- PROVIDE STAKES ON THE PROPERTY LINE OR PROPERTY LINES PRODUCED AT RIGHT ANGLES TO THE SEWER LINE AT THE CENTER LINE OF EACH MANHOLE.
 - NO REPRESENTATIVE OF THE COUNTY ENGINEER WILL SURVEY OR LAYOUT ANY PORTION OF THE WORK.
 - THE OWNER OR HIS AUTHORIZED REPRESENTATIVE SHALL FURNISH THE COUNTY ENGINEER WITH GRADE SHEETS AND STATIONING FOR ALL HOUSE LATERALS AND T BRANCHES AND SHALL PROVIDE STAKES FOR THEM AT THEIR PROPER LOCATIONS WITH STATIONING PLAINLY MARKED. ANY CHANGE IN LOCATION SHALL BE REQUESTED IN WRITING BY THE OWNER OR HIS REPRESENTATIVE.
 - NO REVISIONS SHALL BE MADE IN THESE PLANS WITHOUT THE APPROVAL OF THE COUNTY ENGINEER.
 - USE STANDARD MANHOLE FRAMES AND COVERS, S.A.-117, EXCEPT AS NOTED.
 - USE STANDARD STRENGTH PIPE EXCEPT AS NOTED.
 - USE CEMENT MORTAR OR ALL VITRIFIED CLAY PIPE JOINTS.
 - RESURFACE ALL AREAS WITHIN PAVED AREAS TO MEET L. A. COUNTY ROAD DEPT., OR CALIF. STATE HIGHWAY DEPT. REQUIREMENTS IN ACCORDANCE WITH PERMITS.
 - ENCASE FOUR FEET OF SEWER AT POINTS OF INTERFERENCE WITH POLES, CASE 35, S.A.-172.
 - HOUSE LATERALS TO BE CONSTRUCTED WITH DOWNSLOPE AT PROPER LINE.
 - ALL STRUCTURES SHALL BE BRICK SEWER STRUCTURES, S.A.-104, EXCEPT AS NOTED.
 - FOR ALLOWABLE LEAKAGE TEST USE FORMULA NO. 1, S.P.C.S. SEC. 54.
 - MANHOLE TOPS IN UNIMPROVED RIGHTS-OF-WAY TO BE 4" ABOVE FINISHED GRADE.

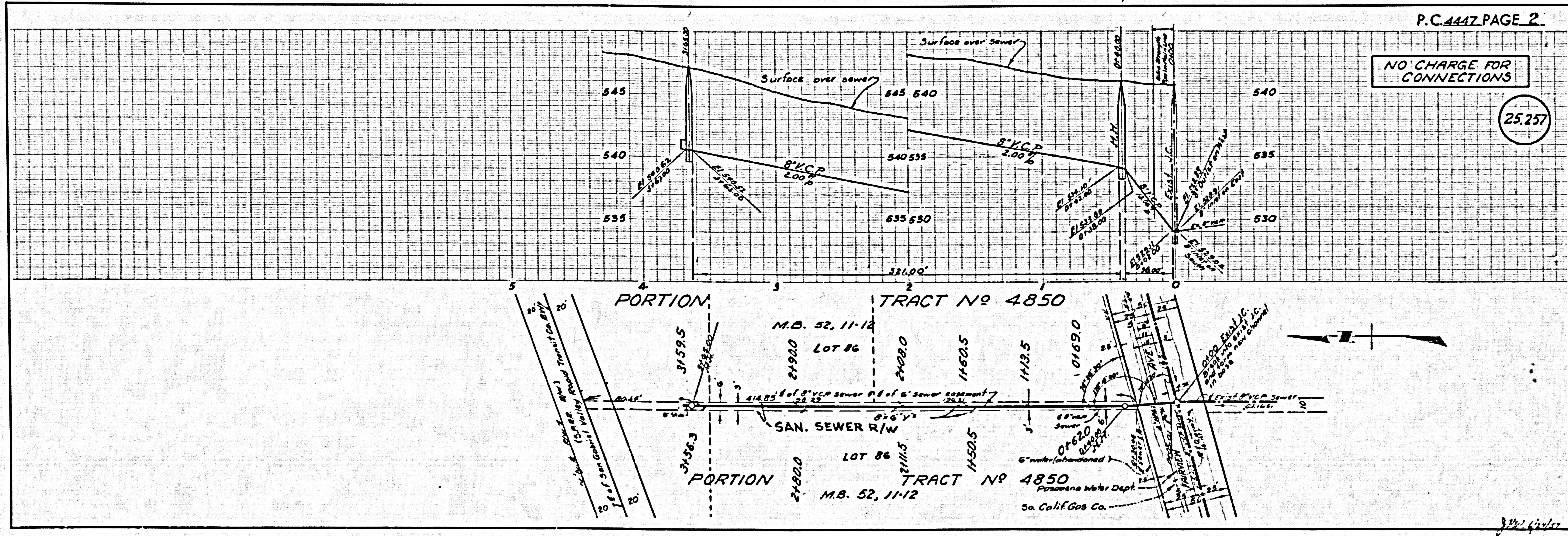
NOTE:
 THE CONTRACTOR SHALL NOTIFY THE CONSTRUCTION AND STORM DRAIN DIVISION BY TELEPHONE, MADISON 9-4747, EXT. 382, AT LEAST 24 HOURS BEFORE STARTING ANY WORK UNDER THIS CONTRACT.

PRIVATE CONTRACT NO. 4447
 W.S. 44
 1 SHEET, 2 PAGES
 SCALE: VERT. 1"=4'
 HORIZ. 1"=40'
 MAY, 1957
 PREPARED IN THE OFFICES OF
 TREADWELL ENGINEERING CORPORATION
 BY Neal H. England
 REG. C. E. NO. 1812
 FOR LEGEND SEE PLAN NO. S-A-64

NOTE:
 GRADES TO WHICH THIS IMPROVEMENT IS TO BE CONSTRUCTED ARE SHOWN ON PLANS AND PROFILE GRADE POINTS FOR TOP OF CURBS, CENTER LINE OF STREETS, OR CENTER LINE OF ALLEYS ARE SHOWN BY CIRCLES ON PROFILES. AT ALL POINTS BETWEEN DESIGNATED POINTS THE GRADE SHALL BE ESTABLISHED SO AS TO CONFORM TO A STRAIGHT LINE DRAWN BETWEEN SAID DESIGNATED POINTS.
 ELEVATIONS ARE IN FEET AND INCHES AND DECIMALS THEREOF.
 THIS DRAWING AND THE DATA HEREON ARE HEREBY MADE A PART OF THE SPECIFICATIONS.
 WORK SHALL BE CONSTRUCTED ACCORDING TO SPECIFICATIONS ON FILE IN THE OFFICE OF THE COUNTY ENGINEER AND SHALL BE PROSECUTED ONLY IN THE PRESENCE OF THE COUNTY ENGINEER.
 BEFORE WORK CAN BE STARTED, THE CONTRACTOR MUST OBTAIN A PERMIT TO EXCAVATE IN COUNTY STREETS FROM THE L. A. COUNTY ROAD DEPT., 108 W. 3RD ST. AND MAKE A DEPOSIT WITH THE COUNTY ENGINEER, ROOM 304 PAM AMERICAN BUILDING, 331 SO. BRADWAY SUFFICIENT TO COVER THE COST OF CONSTRUCTION INSPECTION AND RECORD PLANS.
 APPROVAL OF THIS PLAN BY THE COUNTY OF LOS ANGELES DOES NOT CONSTITUTE A REPRESENTATION AS TO THE ACCURACY OF THE LOCATION OR THE EXISTENCE OR NON-EXISTENCE OF ANY UNDERGROUND UTILITY PIPE OR STRUCTURE WITHIN THE LIMITS OF THIS PROJECT. THIS NOTE APPLIES TO ALL PAGES.
 IF WORK IS TO BE DONE IN A STATE HIGHWAY, A PERMIT MUST BE OBTAINED FROM THE STATE OF CALIFORNIA, DIVISION OF HIGHWAYS, 128 SOUTH SPRING STREET.

COUNTY OF LOS ANGELES, CALIFORNIA
 APPROVED, JOHN A. LAMBE, COUNTY ENGINEER
 APPROVED, A. M. BAWN, CHIEF ENGINEER
 CO. SAN. DIST. NO. 15
 BY C. H. Hughes SANITATION ENGINEER
 BY J. P. ... CHIEF ENGINEER
 CHECKED BY R. K. ...
 OFFICE OF COUNTY ENGINEER, REG. C. E. NO. 3406

Grade change (M.M. relocation)
 REVISION APPROVED
 BY R. K. ...
 OFFICE OF COUNTY ENGINEER, REG. C. E. NO. 3406



NO CHARGE FOR CONNECTIONS

25,257

P.C. 4447 PAGE 2

J. W. ...