

INDEX MAP  
TRACT NO 22702  
P.C. 4448  
Scale 1"=300'

**BENCH MARK: SX 3888**  
Ft. L.B. Nail South Side Conc. Base of Signal Light  
330' E. & Broadway & 43' N & Olive St.  
-1955 Adj. Elev. 62.710  
Note: Subtract 0.86 From all Elevations shown on this plan to agree with S.X. Datum

Note: Numbers in circles indicate page numbers.  
Exist. 8" V.C.P. Sewer City of Compton N° 2-P-1  
Exist. 12" V.C.P. Sewer Victoria St. Trunk San. Dist. #8

**CONNECTION CHARGES AS INDICATED**  
R. Collins 7-1-57

**LENNOX BLDG. DIST. NO. 7**

- NOTES**
- PROVIDE STAKES ON THE PROPERTY LINE OR PROPERTY LINES PRODUCED AT RIGHT ANGLES TO THE SEWER LINE AT THE CENTER LINE OF EACH MANHOLE.
  - NO REPRESENTATIVE OF THE COUNTY ENGINEER WILL SURVEY OR LAYOUT ANY PORTION OF THE WORK.
  - THE OWNER OR HIS AUTHORIZED REPRESENTATIVE SHALL FURNISH THE COUNTY ENGINEER WITH GRADE SHEETS AND STATION FOR ALL HOUSE LATERALS AND Y BRANCHES AND SHALL PROVIDE STAKES FOR THEM AT THEIR PROPER LOCATIONS WITH STATIONING PLAINLY MARKED. ANY CHANGE IN LOCATION SHALL BE REQUESTED IN WRITING BY THE OWNER OR HIS REPRESENTATIVE.
  - NO REVISIONS SHALL BE MADE IN THESE PLANS WITHOUT THE APPROVAL OF THE COUNTY ENGINEER.
  - USE STANDARD MANHOLE FRAMES AND COVERS, S.A. 117, EXCEPT AS NOTED.
  - USE STANDARD STRENGTH PIPE EXCEPT AS NOTED.
  - USE CEMENT MORTAR FOR ALL VITRIFIED CLAY PIPE JOINTS.
  - RESURFACE ALL TRENCH WITHIN PAVED AREA TO MEET L. A. COUNTY ROAD DEPT. OR CALIF. STATE HIGHWAY DEPT. REQUIREMENTS IN ACCORDANCE WITH PERMITS.
  - INDICATE FOUR FEET OF SEWER AT POINTS OF INTERFERENCE WITH POLES, S.A. 119.
  - HOUSE LATERALS TO BE CONSTRUCTED WITH INVERTS AT PROPERTY LINE  $\frac{1}{2}$  FEET BELOW CURB GRADE EXCEPT AS NOTED.
  - ALL STRUCTURES SHALL BE BRICK SEWER STRUCTURES, S.A. 194, EXCEPT AS NOTED.
  - FOR ALLOWABLE LEAKAGE TEST USE "OMEGA" NO. 1, 1" PIPE, SEC. B4.
  - MANHOLE TOPS IN UNIMPROVED RIGHTS-OF-WAY TO BE 4" ABOVE FINISHED GRADE.
  - THE PRIVATE ENGINEER IS TO FURNISH THE HOUSE LATERAL DEPTH AT THE PROPERTY LINE BELOW THE TOP OF CURB ELEVATION FOR EACH HOUSE LATERAL, ON THE GRADE SHEET.
  - THE CONTRACTOR SHALL SATISFY HIMSELF OF ALL SUBSTRUCTURES AND SHALL BE RESPONSIBLE FOR THEIR LOCATION.
  - THE CONTRACTOR SHALL OBTAIN ROAD PERMIT FROM THE CITY OF COMPTON BEFORE EXCAVATING IN CITY STREETS.
  - THE CONTRACTOR SHALL NOTIFY THE CONSTRUCTION AND STORM DRAIN DIVISION BY TELEPHONE, MADISON 9-4141 EXT. 322 AT LEAST 24 HOURS BEFORE STARTING ANY WORK UNDER THIS CONTRACT.

**APPROVED, CITY OF COMPTON**  
By: *Don W. Robins* July 4, 1957  
CITY ENGINEER, COMPTON

Record Drawings: 1956 any existing structure and before final acceptance of this work, County Sanitation District should be notified in order that required inspections may be made.

PROFILE ALIGNMENT AND GRADE OF **P.C. 4448**  
**SANITARY SEWERS** PAGE 1  
TO BE CONSTRUCTED IN

TRACT NO 22702 (25,246)

PRIVATE CONTRACT NO. 4448  
W.S. 26

3 SHEETS, 5 PAGES

SCALE: VERT. 1"=6' HORIZ. 1"=60' APRIL, 1957

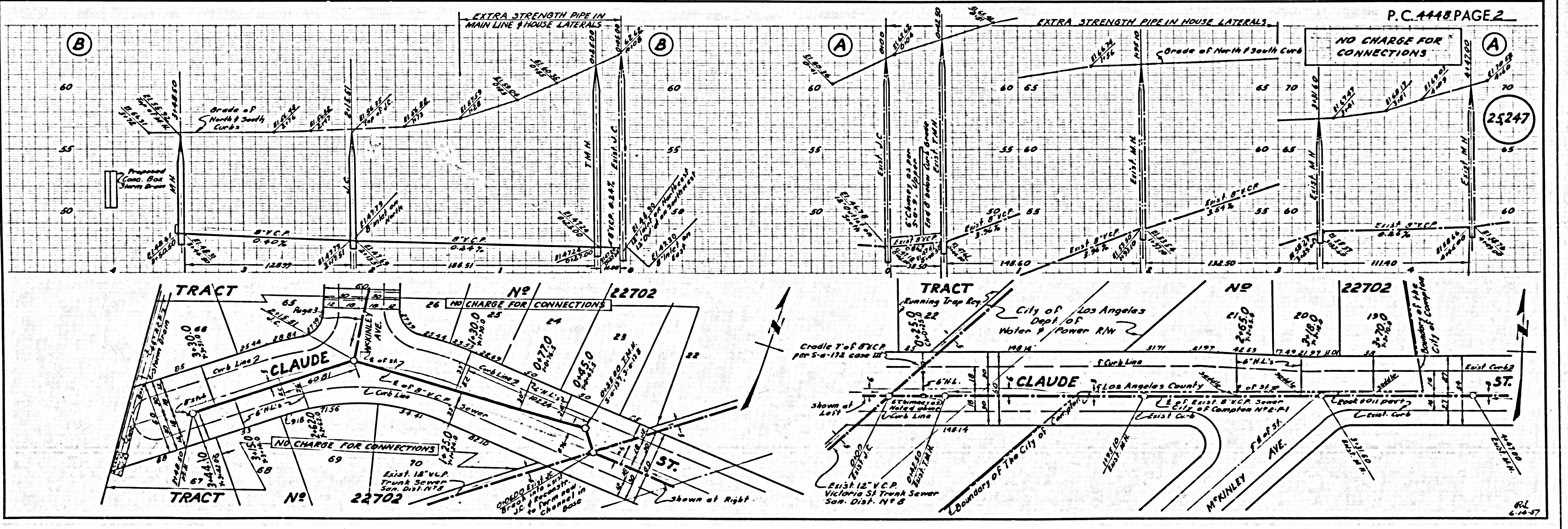
PREPARED IN THE OFFICES OF  
**MCINTIRE & QUIROS INC.**  
By: *Alan McIntire* REG. NO. 3548

FOP LEGEND SEE PLAN NO. S-A-44

**NOTE**  
GRADES TO WHICH THIS IMPROVEMENT IS TO BE CONSTRUCTED ARE SHOWN ON PLANS AND PROFILES. GRADE POINTS FOR TOP OF CURB, CENTER LINE OF STREETS, OR CENTER LINE OF ALLEYS ARE SHOWN BY CIRCLES ON PROFILES. AT ALL POINTS BETWEEN DESIGNATED POINTS THE GRADE SHALL BE ESTABLISHED SO AS TO CONFORM TO A STRAIGHT LINE DRAWN BETWEEN SAID DESIGNATED POINTS.  
ELEVATIONS ARE IN FEET ABOVE U.S.C. & G.S. SEA LEVEL DATUM OF 1929.  
THIS BEARING AND THE DATA HEREON ARE HEREBY MADE A PART OF THE SPECIFICATIONS.  
WORK SHALL BE CONSTRUCTED ACCORDING TO SPECIFICATIONS ON FILE IN THE OFFICE OF THE COUNTY ENGINEER AND SHALL BE PROSECUTED ONLY IN THE PRESENCE OF THE COUNTY ENGINEER.  
WHOLE WORK CAN BE STARTED, THE CONTRACTOR MUST OBTAIN A PERMIT TO EXCAVATE IN COUNTY STREETS FROM THE L. A. COUNTY ROAD DEPT. 120 W. 2ND ST. AND MAKE A DEPOSIT WITH THE COUNTY ENGINEER, ROOM 234 FIAN AMERICAN BUILDING, 212 3RD ST. INCORPORATED TO COVER THE COST OF CONSTRUCTION INSPECTOR AND INSPECTION PLANS.  
APPROVAL OF THIS PLAN BY THE COUNTY OF LOS ANGELES DOES NOT CONSTITUTE A REPRESENTATION AS TO THE ACCURACY OF THE LOCATION OF OR THE EXISTENCE OR NON-EXISTENCE OF ANY UNRECORDED ERIITY PIPE, OR STRUCTURE WITHIN THE LIMITS OF THIS PROJECT. THIS NOTE APPLIES TO ALL PAGES.  
IF WORK IS TO BE DONE IN A STATE HIGHWAY, A PERMIT MUST BE OBTAINED FROM THE STATE OF CALIFORNIA, DIVISION OF HIGHWAYS, 120 SOUTH SPRING STREET.

COUNTY OF LOS ANGELES, CALIFORNIA

APPROVED, JOHN A. LAMBE, COUNTY ENGINEER  
APPROVED, A. M. BAWN, CHIEF ENGINEER  
By: *A. H. Hughes* By: *A. M. Bawn*  
SEALATION ENGINEER OFFICE ENGINEER  
CHECKED BY: *Carl J. H. Peterson* 7/1/57  
OFFICE OF COUNTY ENGINEER, REG. C. E. NO. 10, 537



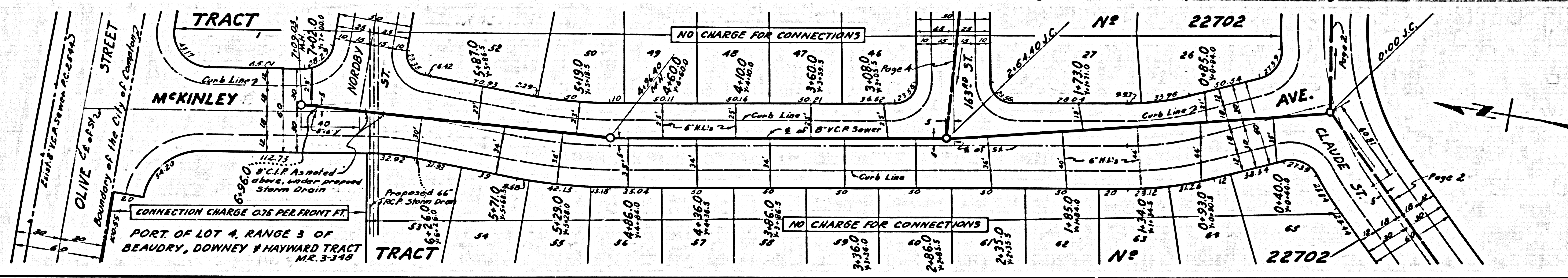
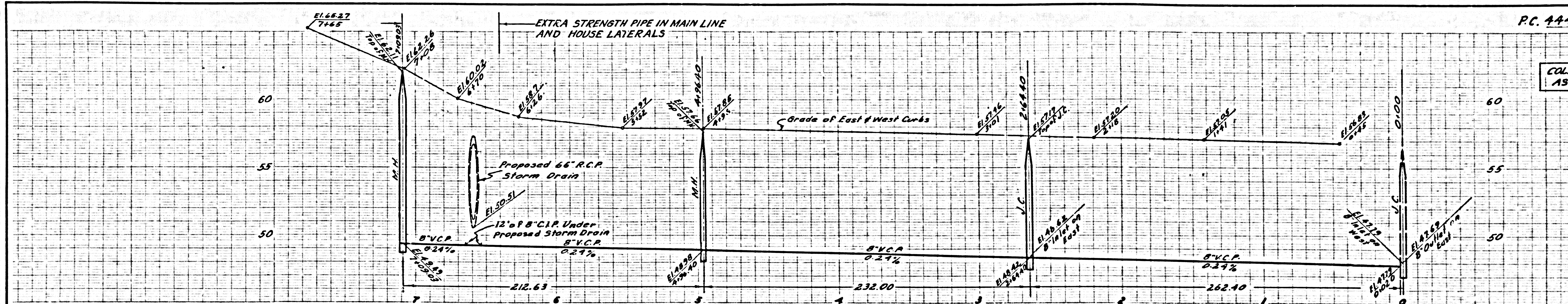
P.C. 4448 PAGE 2

NO CHARGE FOR CONNECTIONS

(25,247)

COLLECT CHARGES AS INDICATED

25,248



NO CHARGE FOR CONNECTIONS

25,249

