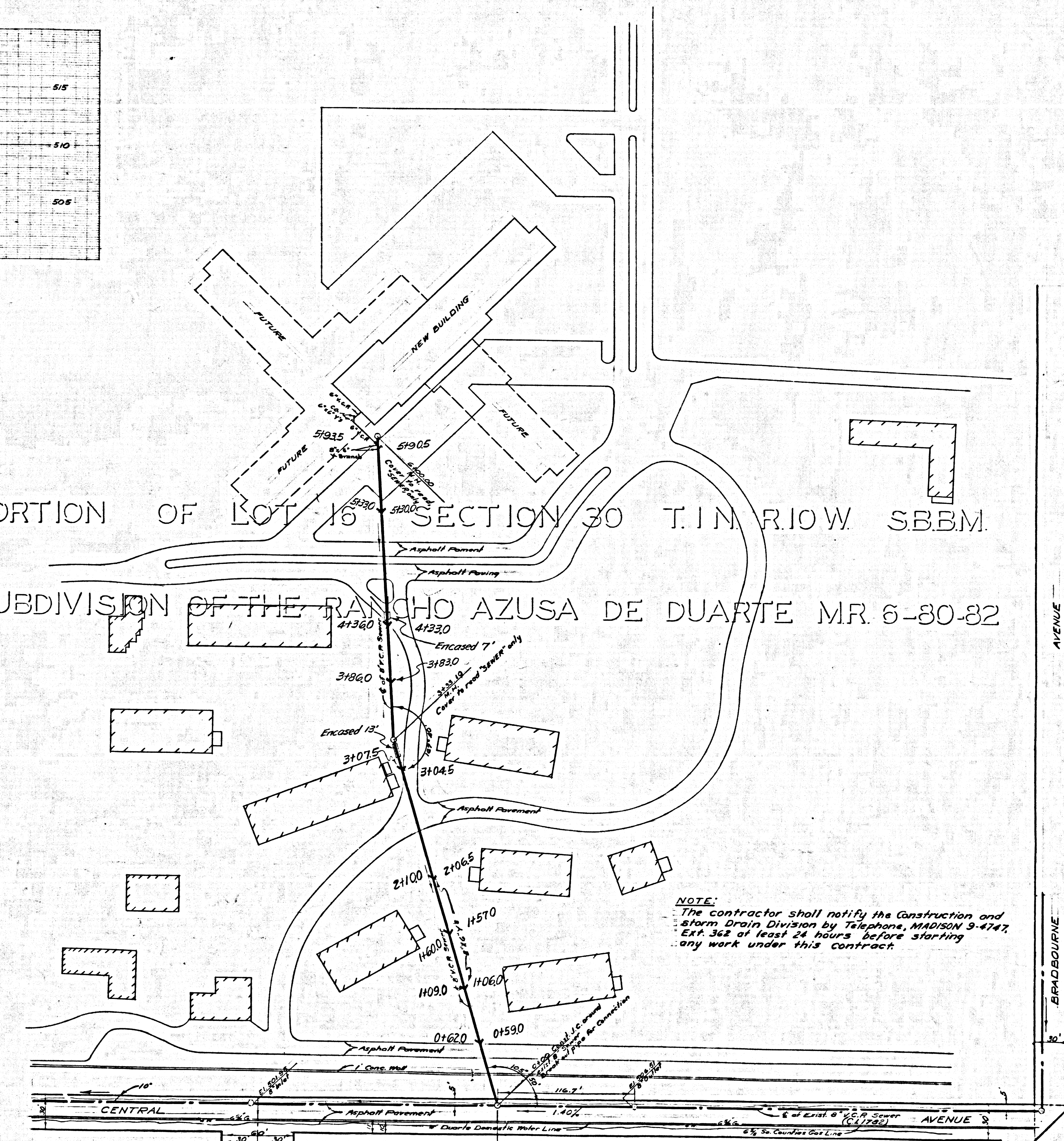


SCALE HORIZ. 1"=40'  
VERT. 1"=4'

PORTION OF LOT 16 SECTION 30 T.11N. R.10W. S.B.M.  
SUBDIVISION OF THE RANCHO AZUSA DE DUARTE MR. 6-80-82



BENCH MARK  
L.C.H. 11 from F.C.R. of S.E. Cor. of Embury Ave. &  
Flower Ave. Dist. Co. Rec. Dept. S.G. 225, Pg. 11 Elev. = 533.126

- Note:  
The representative of the County Engineer will survey or layout any portion of the work.  
No revisions shall be made in these plans without approval of the County Engineer.
- Note:  
Elevations are in feet above U. S. C. & G. S. Sea Level Datum of 1929.  
This Drawing and the data hereon are hereby made a part of the specifications.  
Work shall be constructed according to specifications on file in the office of the County Engineer and shall be prosecuted only in the presence of the County Engineer.
1. Use standard manhole frames and covers, S-117, except as noted.
  2. Use standard strength pipe, except as noted.
  3. Use cement mortar for all vitrified clay pipe joints.
  4. Resurface all trench within paved area to meet Los Angeles County Road Department or California State Highway requirements, in accordance with permit.
  5. Encase four feet of sewer at points of interference with poles as per S-119.
  6. All structures shall be brick sewer structures S-104, except as noted.
  7. For allowable leakage test use Formula No. \_\_\_\_\_ Spec's, Sec. 54.

Before work can be started, the contractor must obtain a permit to excavate in County streets from the L. A. County Road Department, 108 West Second Street and a permit to cover construction inspection and record plans from the County Engineer, Room 324, 233 South Broadway.  
If work is to be done in a state highway, a permit must be obtained from the state of California, Division of Highways, 120 South Spring Street.  
Approval of this plan by the County of Los Angeles does not constitute a representation as to the accuracy of the location of, or the existence or non-existence of, any underground utility, pipe, or structure within the limits of this project.

NOTE:  
The above approved by the County Engineer applies to the following:  
(a) All 8 inch or larger sanitary sewer lines.  
(b) All manholes.

PRIVATE CONTRACT No. 4450  
Temple City, BLDG. DIST. No. 5  
COUNTY OF LOS ANGELES, CALIFORNIA  
APPROVED, JOHN A. LAMBE, County Engineer  
By: *John A. Lambe*  
Solutions Engineer  
APPROVED, A. M. BAYN, Chief Engineer  
By: *A. M. Bayn*  
Office Engineer  
Checked: *S. J. [unclear]*  
Office of County Engineer Reg. C. E. No. 7554

NOTE:  
The contractor shall notify the Construction and Storm Drain Division by Telephone, MADISON 9-4747, EXT. 362 at least 24 hours before starting any work under this contract.

(25,034)  
(PRIVATE SEWERS)  
MAP SHOWING  
PROPOSED 8" SEWER LINE TO BE CON'S  
WESTMINSTER GARDENS IN  
DUARTE CALIFORNIA  
JUNE 1957  
SCALE 1"=40'  
PREPARED BY  
ADAM'S  
BY