

**PUEENTE BLDG. DIST. NO. 2**

PROFILE ALIGNMENT AND GRADE OF **P.C. 4454**  
**SANITARY SEWERS** PAGE **1**  
 TO BE CONSTRUCTED IN

**TRACT NO 19161** (25040)  
**PRIVATE CONTRACT NO. 4454**

W.S. 46  
 2 SHEETS; 4 PAGES

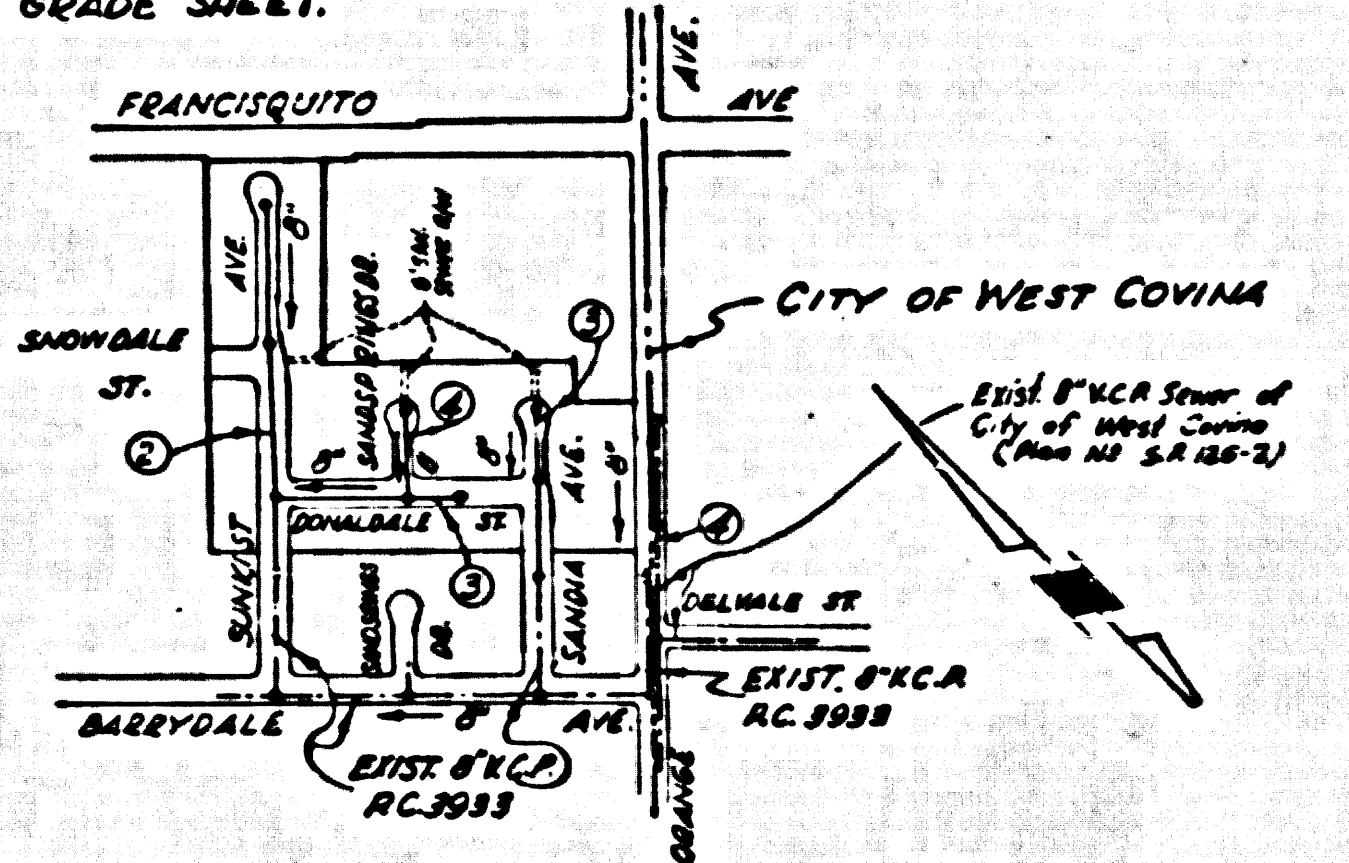
SCALE: VERT. 1" = 4'  
 HORIZ. 1" = 40'  
 JUNE, 1957  
 PREPARED IN THE OFFICES OF  
**A. RICHARD BROWN, JR.**  
 738 COMMONWEALTH AVE., BUENA PARK, CALIF.  
 REG. C. E. NO. 2993  
**A. Richard Brown, Jr.**  
 REG. C. E. NO. 2993  
 FOR LEGEND SEE PLAN NO. S-A-64

**BENCH MARK NO. 58 388 ESET**  
 LOS ANGELES COUNTY SURVEYORS MONUMENT AT E INTERSECTION OF FRANCISQUITO AVENUE AND ORANGE AVENUE (BASE LINE).  
 & LEV. 336.794 (1955 ADJ.)

**NOTE:**  
 THE CONTRACTOR SHALL NOTIFY THE CONSTRUCTION AND STORM DRAIN DIVISION BY TELEPHONE, MADISON 94747, EXT. 362, AT LEAST 24 HRS. BEFORE STARTING ANY WORK UNDER THIS CONTRACT.

**NO CHARGE FOR CONNECTIONS**  
 S. C. U. 7-25-57

- NOTES:**
- PROVIDE STAKES ON THE PROPERTY LINE OR PROPERTY LINES PRODUCED AT RIGHT ANGLES TO THE SEWER LINE AT THE CENTER LINE OF EACH MANHOLE.
  - NO REPRESENTATIVE OF THE COUNTY ENGINEER WILL SURVEY OR LAYOUT ANY PORTION OF THE WORK.
  - THE OWNER OR HIS AUTHORIZED REPRESENTATIVE SHALL FURNISH THE COUNTY ENGINEER WITH GRADE SHEETS AND STATION FOR ALL HOUSE LATERALS AND 7" MANHOLES AND SHALL PROVIDE STAKES FOR THEM AT THEIR PROPER LOCATIONS WITH STATIONING PLAINLY MARKED. ANY CHANGE IN LOCATION SHALL BE REQUESTED IN WRITING BY THE OWNER OR HIS REPRESENTATIVE.
  - NO REVISIONS SHALL BE MADE IN THESE PLANS WITHOUT THE APPROVAL OF THE COUNTY ENGINEER.
  - USE STANDARD MANHOLE FRAMES AND COVERS, S-117, EXCEPT AS NOTED.
  - USE STANDARD STRENGTH PIPE EXCEPT AS NOTED.
  - USE CEMENT MORTAR FOR ALL VITRIFIED CLAY PIPE JOINTS.
  - RESURFACE ALL TRENCH WITHIN PAVED AREA TO MEET L. A. COUNTY ROAD DEPT., OR CALIF. STATE HIGHWAY DEPT. REQUIREMENTS IN ACCORDANCE WITH PERMITS.
  - ENCASE FOUR FEET OF SEWER AT POINTS OF INTERFERENCE WITH POLES, CASE III, S-9-172.
  - HOUSE LATERALS TO BE CONSTRUCTED WITH INVERTS AT PROPERTY LINE 8 FEET BELOW CURB GRADE EXCEPT AS NOTED.
  - ALL STRUCTURES SHALL BE BRICK SEWER STRUCTURES, S-A-104, EXCEPT AS NOTED.
  - FOR ALLOWABLE LEAKAGE TEST USE FORMULA NO. 1, S-1-1, S-1-2, S-1-3, S-1-4.
  - MANHOLE TOPS IN UNIMPROVED RIGHTS-OF-WAY TO BE 6" ABOVE FINISHED GRADE.
  - THE PRIVATE ENGINEER IS TO FURNISH THE HOUSE LATERAL DEPTH AT THE PROPERTY LINE BELOW THE TOP OF CURB ELEVATION FOR EACH HOUSE LATERAL ON THE GRADE SHEET.



**INDEX MAP**  
 "CITY OF WEST COVINA"  
**TRACT NO 19161**  
 P.C. 4454

Before work can be started, the contractor must obtain a permit to excavate in city streets from the City of West Covina Road Dept.

**NOTE:**  
 GRADES TO WHICH THE IMPROVEMENT IS TO BE CONSTRUCTED ARE SHOWN ON PLANS AND PROFILES. GRADE POINTS FOR TOP OF CURBS, CENTER LINE OF STREETS, OR CENTER LINE OF ALLEYS ARE SHOWN BY CIRCLES ON PROFILES. AT ALL POINTS BETWEEN DESIGNATED POINTS THE GRADE SHALL BE ESTABLISHED SO AS TO CONFORM TO A STRAIGHT LINE DRAWN BETWEEN SAID DESIGNATED POINTS.  
 ELEVATIONS ARE IN FEET ABOVE U.S.C. & G.S. MEAN LEVEL DATUM OF 1929.  
 THIS DRAWING AND THE DATA HEREON ARE HEREBY MADE A PART OF THE SPECIFICATIONS.  
 WORK SHALL BE CONSTRUCTED ACCORDING TO SPECIFICATIONS ON FILE IN THE OFFICE OF THE COUNTY ENGINEER AND SHALL BE PROSECUTED ONLY IN THE PRESENCE OF THE COUNTY ENGINEER.  
 BEFORE WORK CAN BE STARTED, THE CONTRACTOR MUST OBTAIN A PERMIT TO EXCAVATE IN COUNTY STREETS FROM THE L. A. COUNTY ROAD DEPT., 100 W. 2ND ST. AND MAKE A REPORT WITH THE COUNTY ENGINEER, ROOM 524 PAN AMERICAN BUILDING, 333 SO. BROADWAY SUFFICIENT TO COVER THE COST OF CONSTRUCTION INSPECTION AND RECORD PLANS.  
 APPROVAL OF THIS PLAN BY THE COUNTY OF LOS ANGELES DOES NOT CONSTITUTE A REPRESENTATION AS TO THE ACCURACY OF THE LOCATION OF OR THE EXISTENCE OR NON-EXISTENCE OF ANY UNDERGROUND UTILITY PIPE, OR STRUCTURE WITHIN THE LIMITS OF THIS PROJECT. THIS NOTE APPLIES TO ALL PAGES.  
 IF WORK IS TO BE DONE IN A STATE HIGHWAY, A PERMIT MUST BE OBTAINED FROM THE STATE OF CALIFORNIA, DIVISION OF HIGHWAYS, 120 SOUTH SPRING STREET.

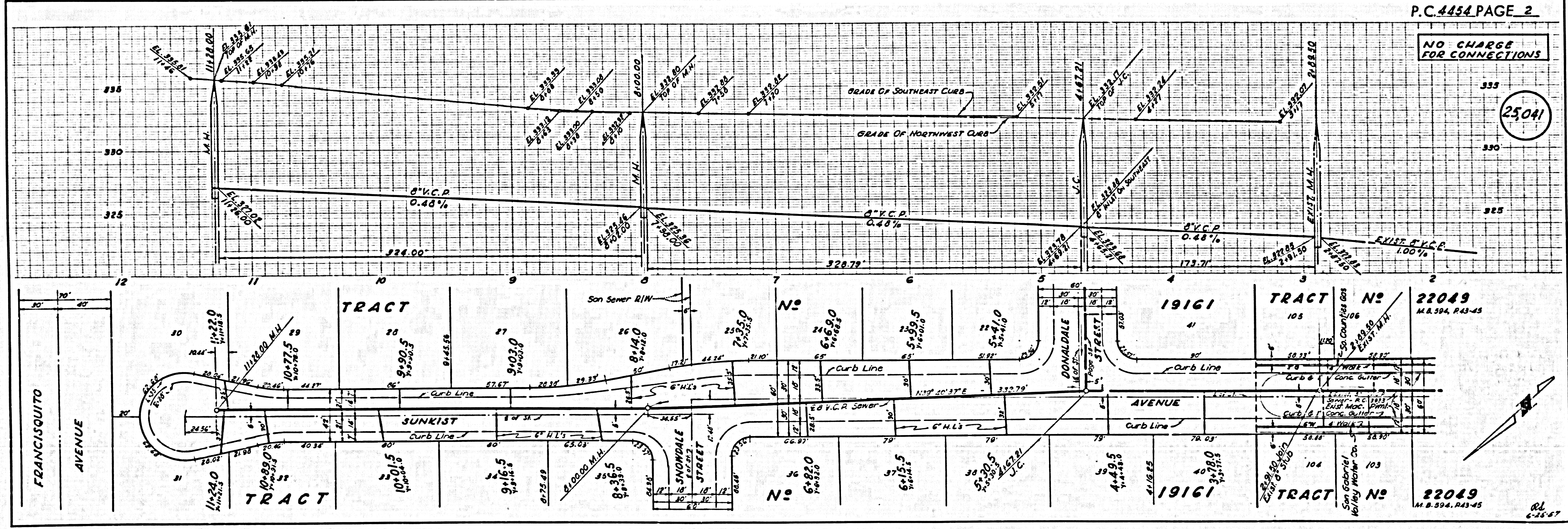
**COUNTY OF LOS ANGELES, CALIFORNIA**  
 APPROVED, JOHN A. LAMBE, COUNTY ENGINEER  
 APPROVED, A. H. BROWN, CHIEF ENGINEER  
 BY **A. R. Brown, Jr.** 2557 SANITATION ENGINEER  
 BY **A. H. Brown** OFFICE ENGINEER  
 CHECKED BY **S. C. U. 7-25-57**  
 OFFICE OF COUNTY ENGINEER, REG. C. E. NO. 2993

**ORANGE AVENUE, APPROVED**  
 BY: **W. M. Collier 7/29/57**  
 W. M. COLLIER, C. E. 6815  
 SANITATION ENGINEER  
 CITY OF WEST COVINA

P.C. 4454 PAGE 2

**NO CHARGE FOR CONNECTIONS**

(25041)



5-C-4454  
 1

