

NORWALK BLDG. DIST. NO. 4.2

PROFILE ALIGNMENT AND GRADE OF P.C. 4457  
 SANITARY SEWERS PAGE 1

TO BE CONSTRUCTED IN  
 TRACT No 23312 (26,408)

PRIVATE CONTRACT NO. 4457  
 W.S. 34

5 SHEETS, 9 PAGES  
 SCALE: 1" = 20' FEB. 1957

PREPARED IN THE OFFICES OF  
 MCINTIRE & QUIROS INC.

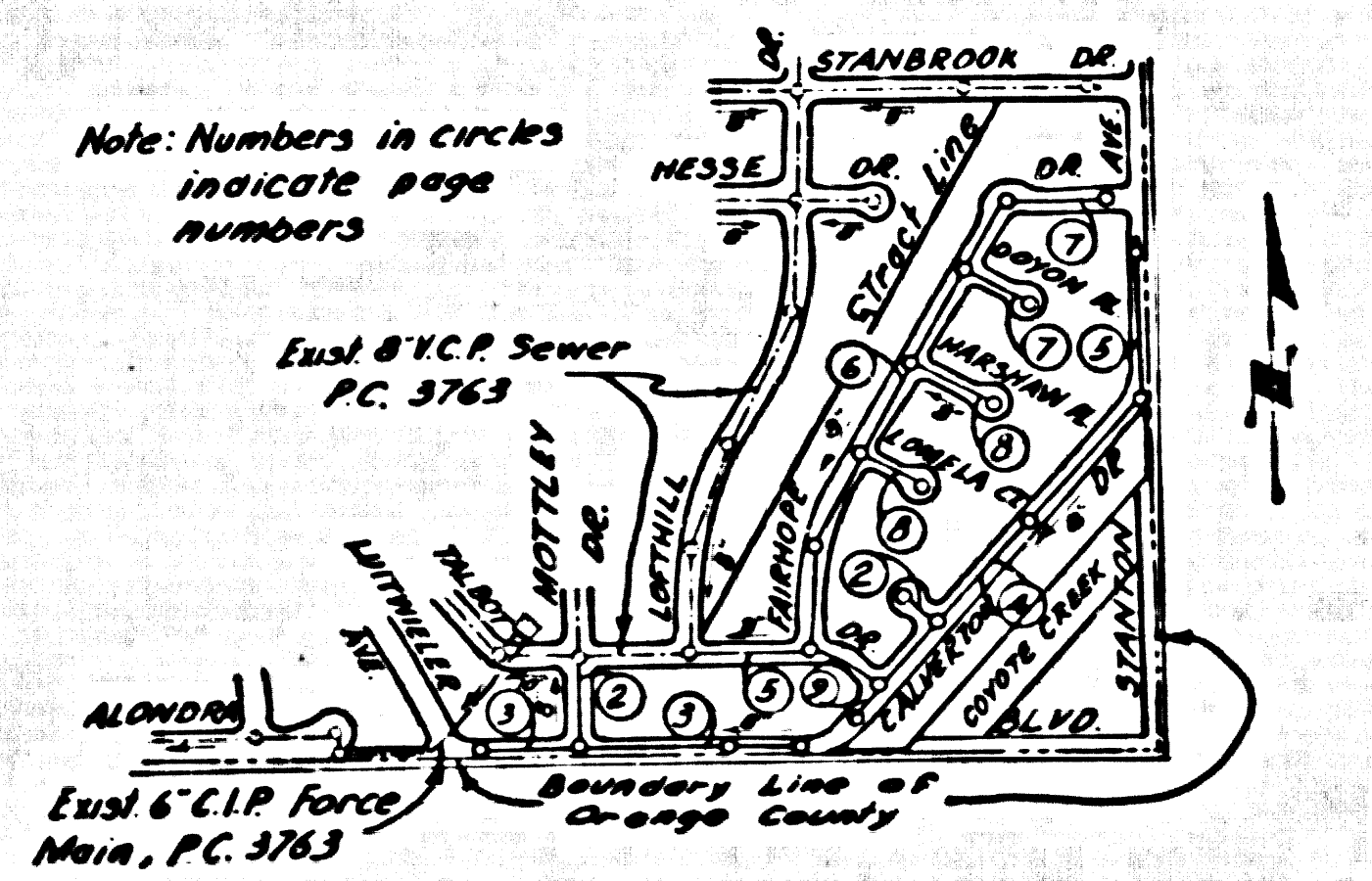
By: *Oliver Murray* 5/27/57  
 REC. E. NO. 3548

FOR LEGEND SEE PLAN NO. S-A-64

**BENCH MARK: 3-2**  
 Stage Rd. & Luttwiler Ave. A Standard County Surveyors Monument marked 3-2 set in concrete 16" below the surface approximately on the center line of Luttwiler Ave. and about 72' N of the center line of Stage Rd. in a well cut in the pavement and protected by a cast iron cover marked "County Surveyors Monument" Co. Surv. F.B. 120A-6 1952 ADJ. Elev. 109.862

**NOTE:**  
 THE CONTRACTOR SHALL NOTIFY THE CONSTRUCTION AND STORM DRAIN DIVISION BY TELEPHONE, MADISON 9-4747, EXT. 362, AT LEAST 24 HOURS BEFORE STARTING ANY WORK UNDER THIS CONTRACT.

- NOTES:**
- PROVIDE STAKES ON THE PROPERTY LINE OR PROPERTY LINES PRODUCED AT RIGHT ANGLES TO THE SEWER LINE AT THE CENTER LINE OF EACH MANHOLE.
  - NO REPRESENTATIVE OF THE COUNTY ENGINEER WILL SURVEY OR LAYOUT ANY PORTION OF THE WORK.
  - THE OWNER OR HIS AUTHORIZED REPRESENTATIVE SHALL FURNISH THE COUNTY ENGINEER WITH GRADE SHEETS AND STATION FOR ALL HOUSE LATERALS AND Y BRANCHES AND SHALL PROVIDE STAKES FOR THEM AT THEIR PROPER LOCATION; WITH STATION AND PLAINLY MARKED. ANY CHANGE IN LOCATION SHALL BE REQUESTED BY WRITING BY THE OWNER OR HIS REPRESENTATIVE.
  - NO REVISIONS SHALL BE MADE IN THESE PLANS WITHOUT THE APPROVAL OF THE COUNTY ENGINEER.
  - USE STANDARD MANHOLE FRAMES AND COVERS, S.A-117, EXCEPT AS NOTED.
  - USE STANDARD MANHOLE FRAMES EXCEPT AS NOTED.
  - USE CEMENT MORTAR, "WEDGE-LOCK OR SPEED-SEAL" FOR ALL WITRIFIED CLAY PIPE JOINTS PER SPEC'S SEC'S 369-98.
  - RESURFACE ALL TRENCH WITHIN PAVED AREA TO MEET L.A. COUNTY ROAD DEPT. OR CALIF. STATE HIGHWAY DEPT. REQUIREMENTS IN ACCORDANCE WITH PERMITS.
  - ENCASE FOUR FEET OF SEWER AT POINTS OF INTERFERENCE WITH POLES, S.A-119.
  - HOUSE LATERALS TO BE CONSTRUCTED WITH INVERTS AT PROPERTY LINE... FEET BEOC - CURB GRADE EXCEPT AS NOTED.
  - ALL STRUCTURES SHALL BE BRICK SEWER STRUCTURES, S.A-104, EXCEPT AS NOTED.
  - FOR ALLOWABLE LEAKAGE TEST USE FORMULA NO. 1 SPEC'S, SEC. 54.
  - MANHOLE TOPS IN UNIMPROVED RIGHTS-OF-WAY TO BE 6" ABOVE FINISHED GRADE.
  - THE PRIVATE ENGINEER IS TO FURNISH THE HOUSE LATERAL DEPTH AT THE PROPERTY LINE BELOW THE TOP OF CURB ELEVATION FOR EACH HOUSE LATERAL, ON THE GRADE SHEET.
  - THE CONTRACTOR SHALL SATISFY HIMSELF OF ALL SUBSTRUCTURES AND SHALL BE RESPONSIBLE FOR THEIR LOCATION.
  - NO CONSTRUCTION WILL BE PERMITTED IN FILLED AREAS UNLESS ACCEPTABLE CERTIFICATION IS SUBMITTED TO THE CONSTRUCTION DIVISION OF THE COUNTY ENGINEER'S DEPARTMENT THAT CONSTRUCTION IS GREATER THAN 80%.
  - IF COMPACTION IS LESS THAN 90% THE SEWER MUST BE CRADLED, PER S-A-166.
  - IF COMPACTION IS GREATER THAN 90% CRADLING IS NOT REQUIRED, HOWEVER JOINT COMPOUND MUST BE SUBSTITUTED FOR CEMENT MORTAR FOR ALL JOINTS IN FILLED AREAS. WEDGE-LOCK OR SPEED-SEAL MAY ALSO BE USED IN FILLED AREAS.

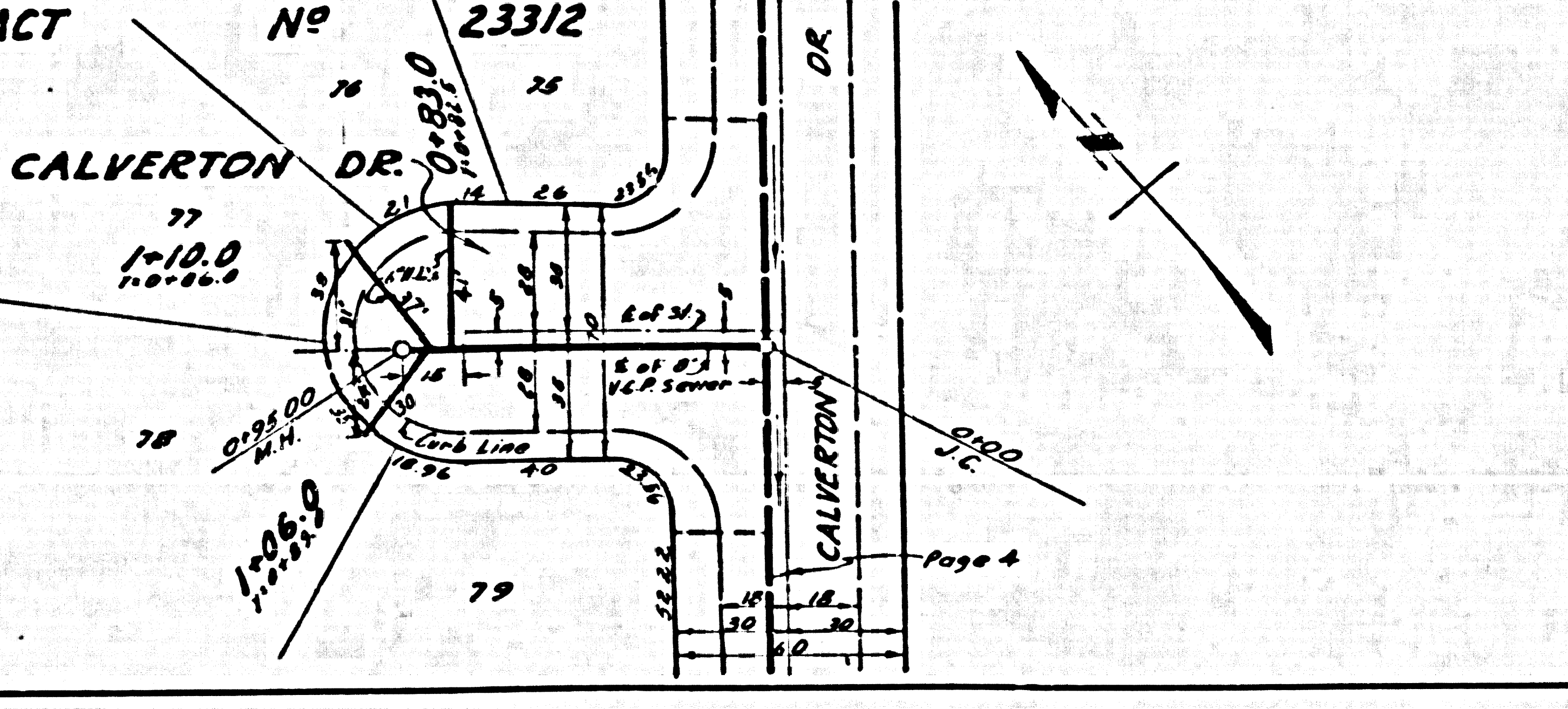
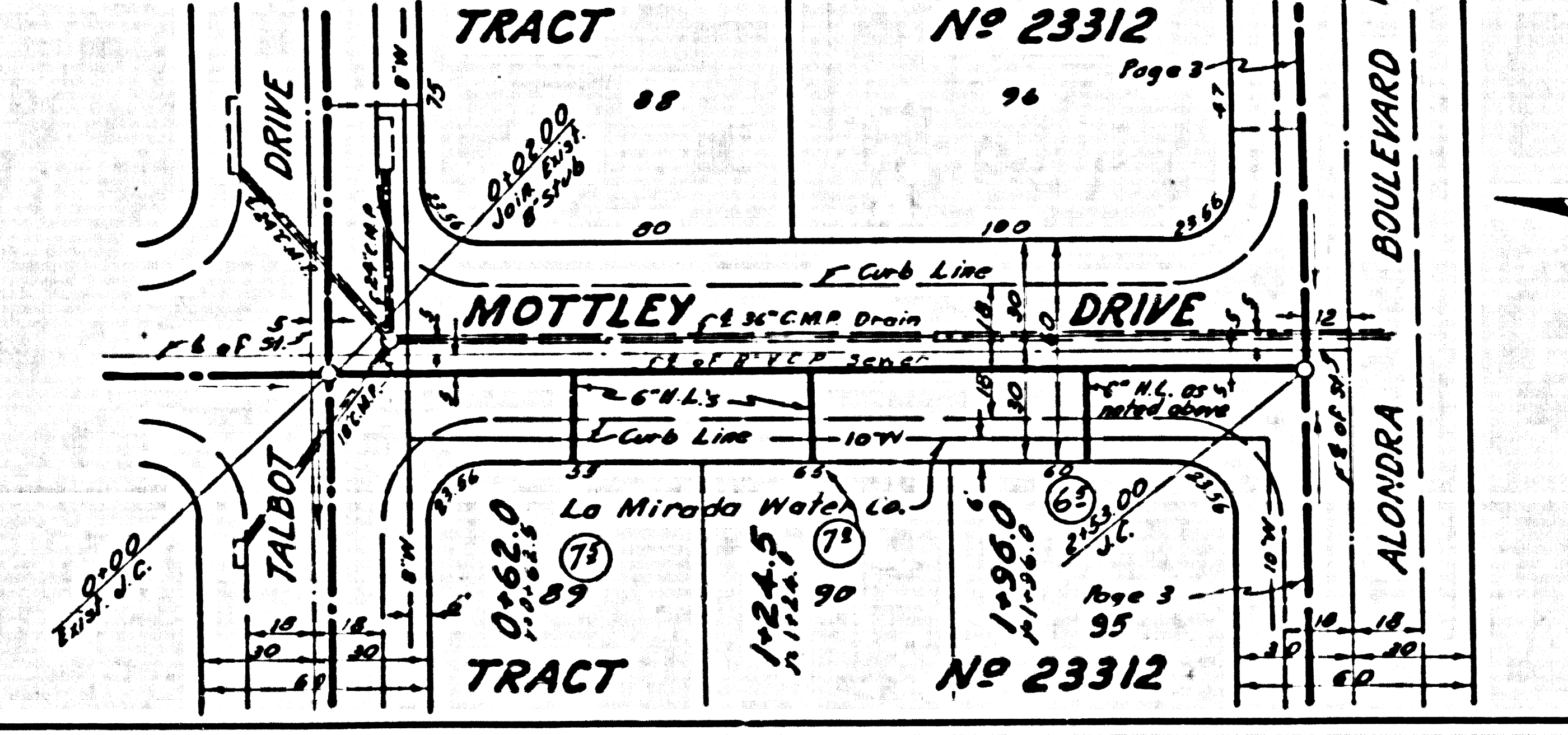
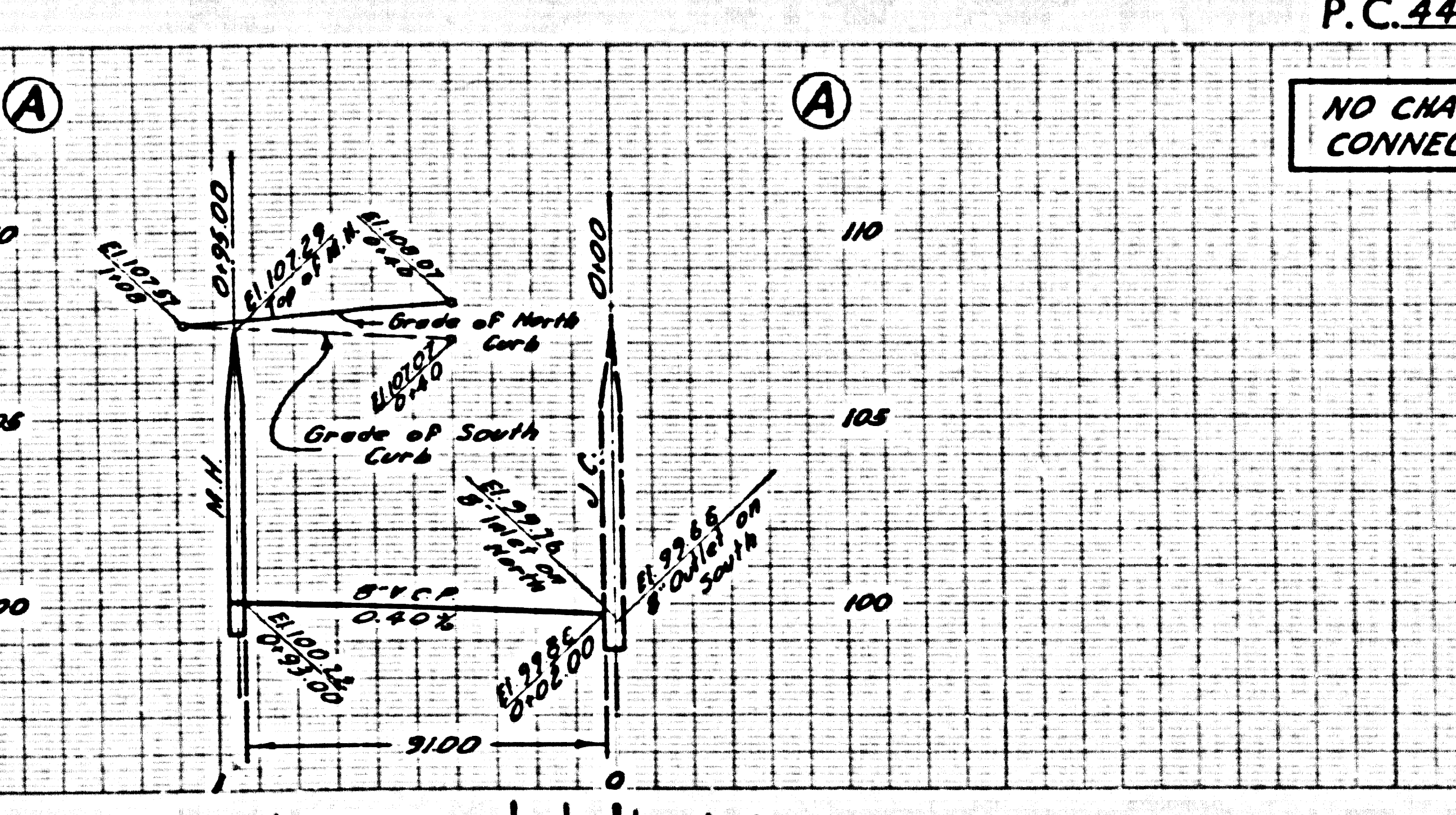
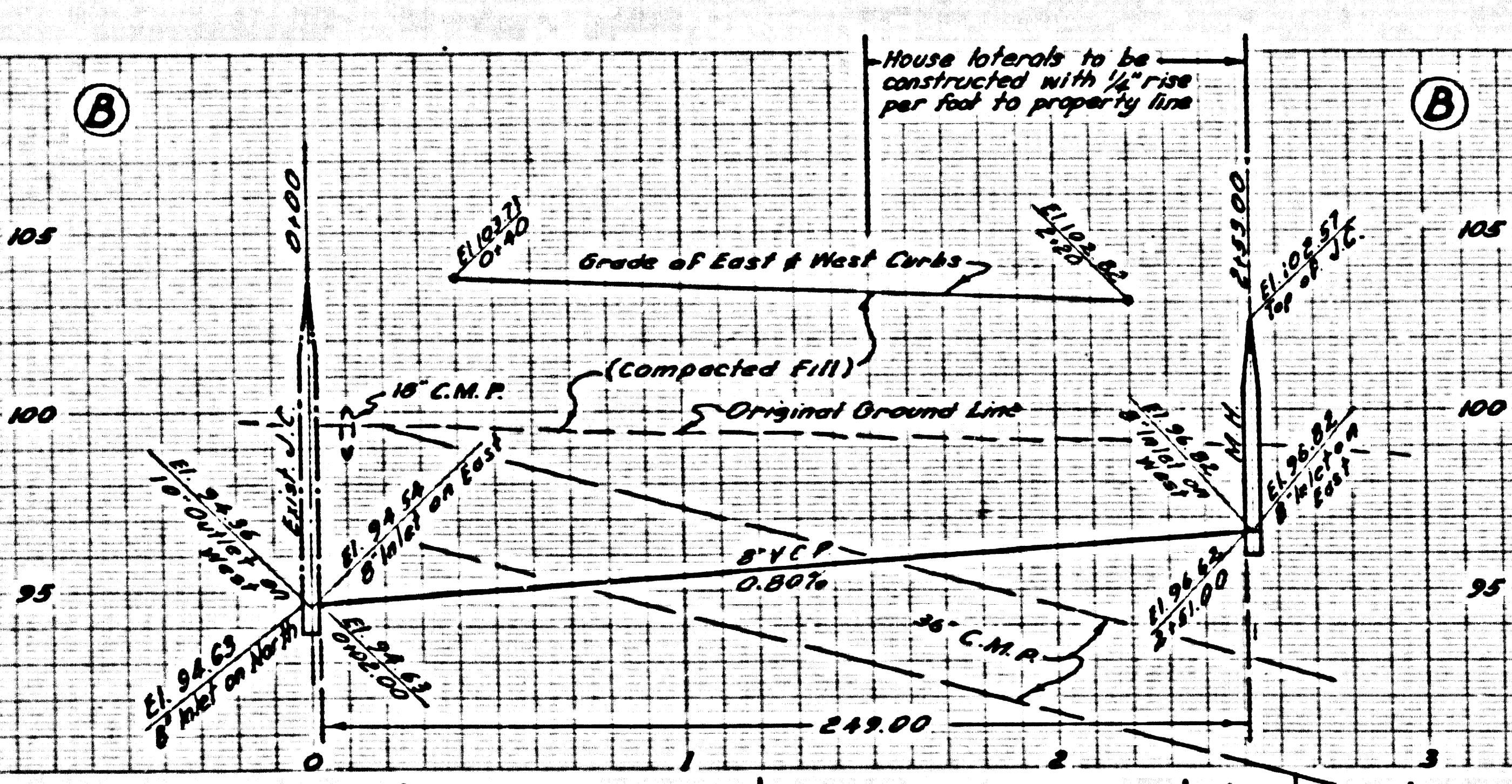


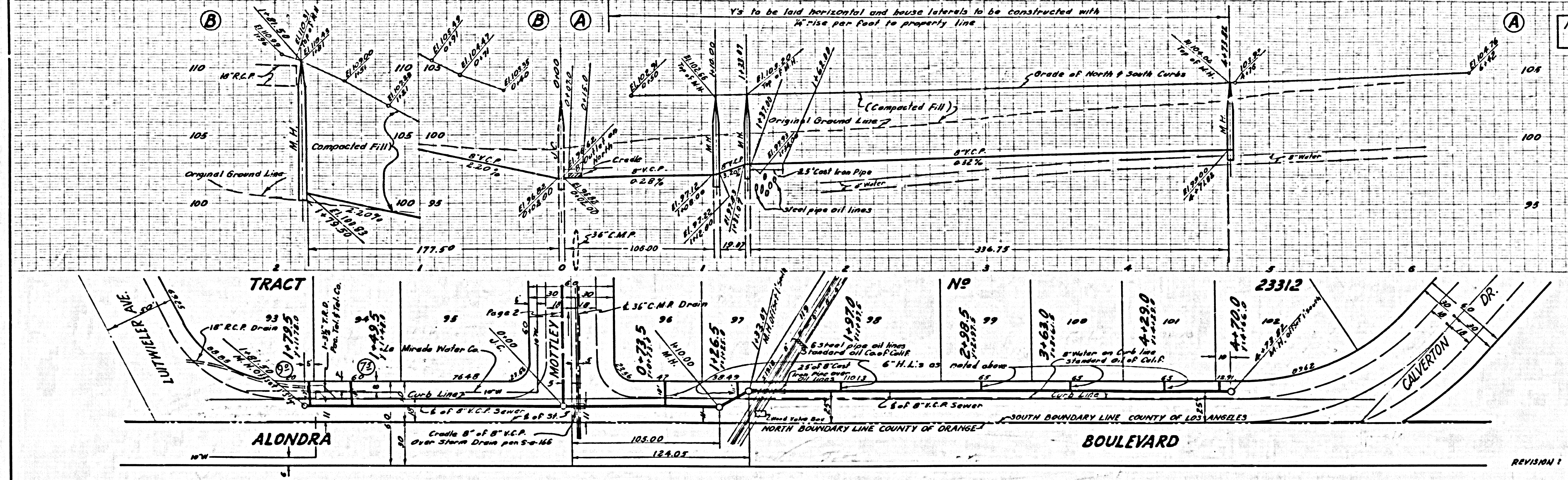
**NOTE:** (1) Lots 1-5 incl. along Stanbrook Dr. are served by existing house laterals constructed under P.C. 3763.  
 (2) Lots 87, 88, 91 and 92 along Talbot Dr. are served by existing house laterals constructed under P.C. 4383.

**CONNECTION CHARGES AS INDICATED**  
 7.77¢ per foot 4-10-58

**NOTE:**  
 GRADES TO WHICH THIS IMPROVEMENT IS TO BE CONSTRUCTED ARE SHOWN ON PLANS AND PROFILES. GRADE POINTS FOR TOP OF CURB, CENTER LINE OF STREET, OR CENTER LINE OF ALLEYS ARE SHOWN BY CIRCLES ON PROFILES. AT ALL POINTS BETWEEN DESIGNATED POINTS THE GRADE SHALL BE ESTABLISHED SO AS TO CONFORM TO A STRAIGHT LINE DRAWN BETWEEN DESIGNATED POINTS.  
 ELEVATIONS ARE IN FEET ABOVE U.S.C. & G.S. SEA LEVEL DATUM OF 1929.  
 THIS DRAWING AND THE DATA HEREON ARE HEREBY MADE A PART OF THE SPECIFICATIONS.  
 BEFORE WORK CAN BE STARTED, THE CONTRACTOR MUST OBTAIN A PERMIT TO EXCAVATE IN COUNTY STREETS FROM THE L.A. COUNTY ROAD DEPT., 108 W. 2ND ST. AND MAKE A DEPOSIT WITH THE COUNTY ENGINEER, ROOM 324 PAM AMERICAN BUILDING, 218 SO. BROADWAY SUFFICIENT TO COVER THE COST OF CONSTRUCTION INSPECTION AND RECORD PLANS.  
 APPROVAL OF THIS PLAN BY THE COUNTY OF LOS ANGELES DOES NOT CONSTITUTE A REPRESENTATION AS TO THE ACCURACY OF THE LOCATION OF OR THE EXISTENCE OR NON-EXISTENCE OF ANY UNDERGROUND UTILITY PIPE, OR STRUCTURE WITHIN THE LIMITS OF THIS PROJECT. THIS NOTE APPLIES TO ALL PAGES.  
 IF WORK IS TO BE DONE IN A STATE HIGHWAY, A PERMIT MUST BE OBTAINED FROM THE STATE OF CALIFORNIA, DIVISION OF HIGHWAYS, 126 SOUTH SPRING STREET.

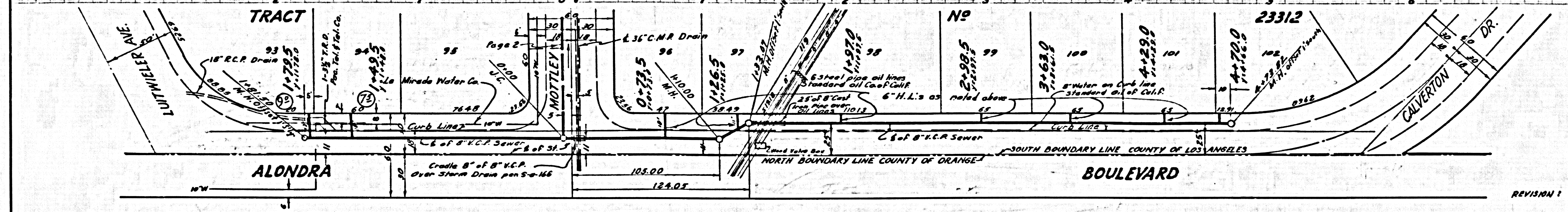
COUNTY OF LOS ANGELES, CALIFORNIA  
 APPROVED, JOHN A. LAMBE, COUNTY ENGINEER  
 APPROVED, A. M. RAWN, CHIEF ENGINEER  
 BY: *J. A. Hughes* SANITATION ENGINEER  
 BY: *A. M. Rawn* OFFICE ENGINEER  
 CHECKED BY: *E. C. White* 4-11-58  
 OFFICE OF COUNTY ENGINEER, BLDG. C. E. NO. 9406





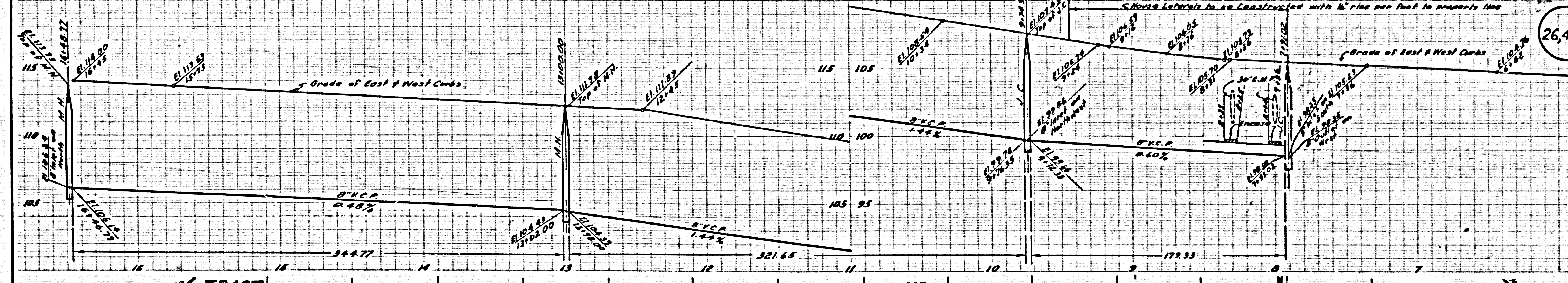
NO CHARGE FOR CONNECTIONS

26,410



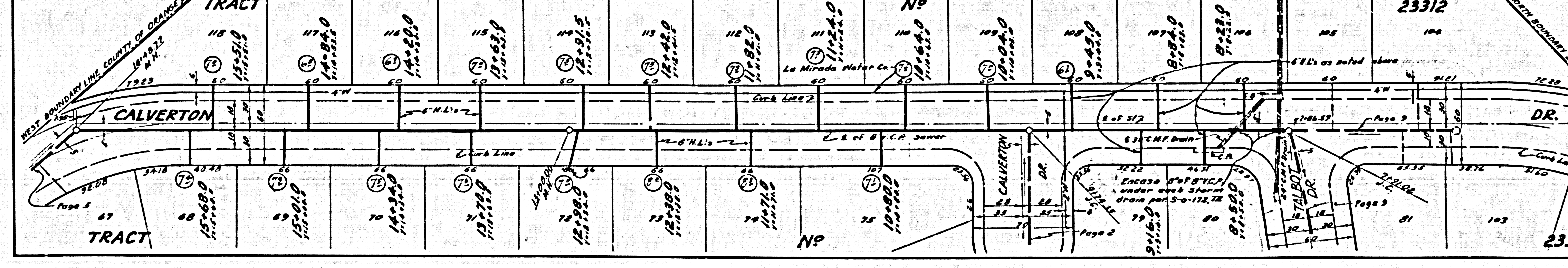
REVISION 1 SEC-A - REVISED LOCATION AND GRADES OF MAIN LINE TO AVOID OIL LINES

APPROVED: *[Signature]* 9-17-58  
 OFFICE OF COUNTY ENGINEER  
 S.A. C.E.M. 9406

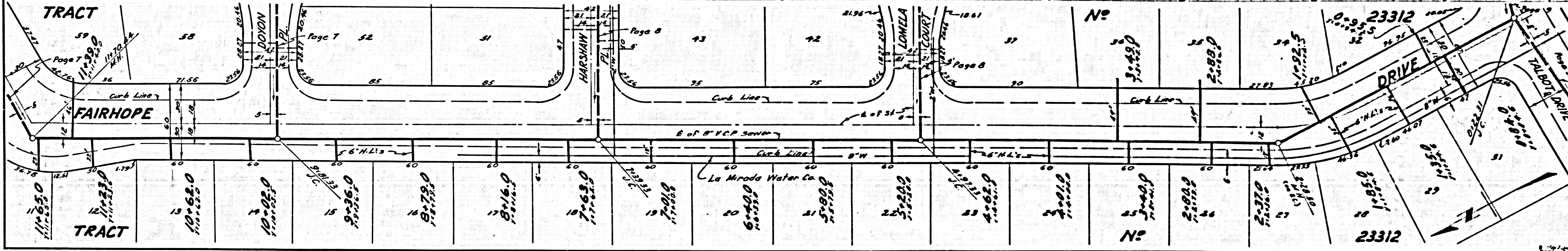
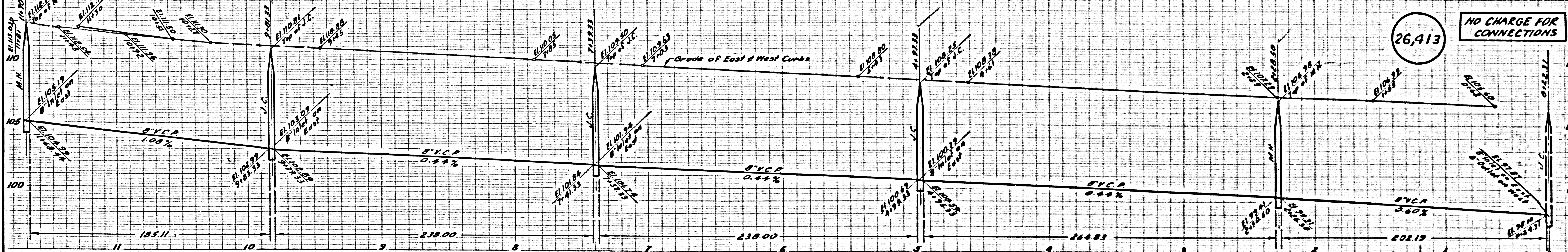
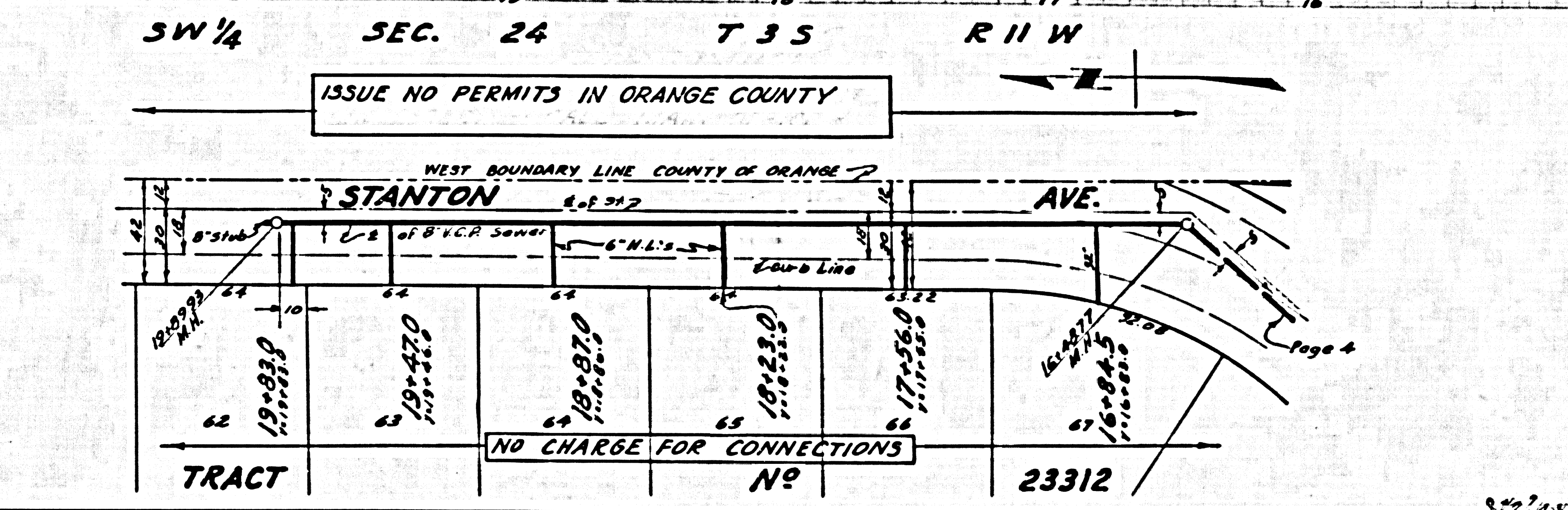
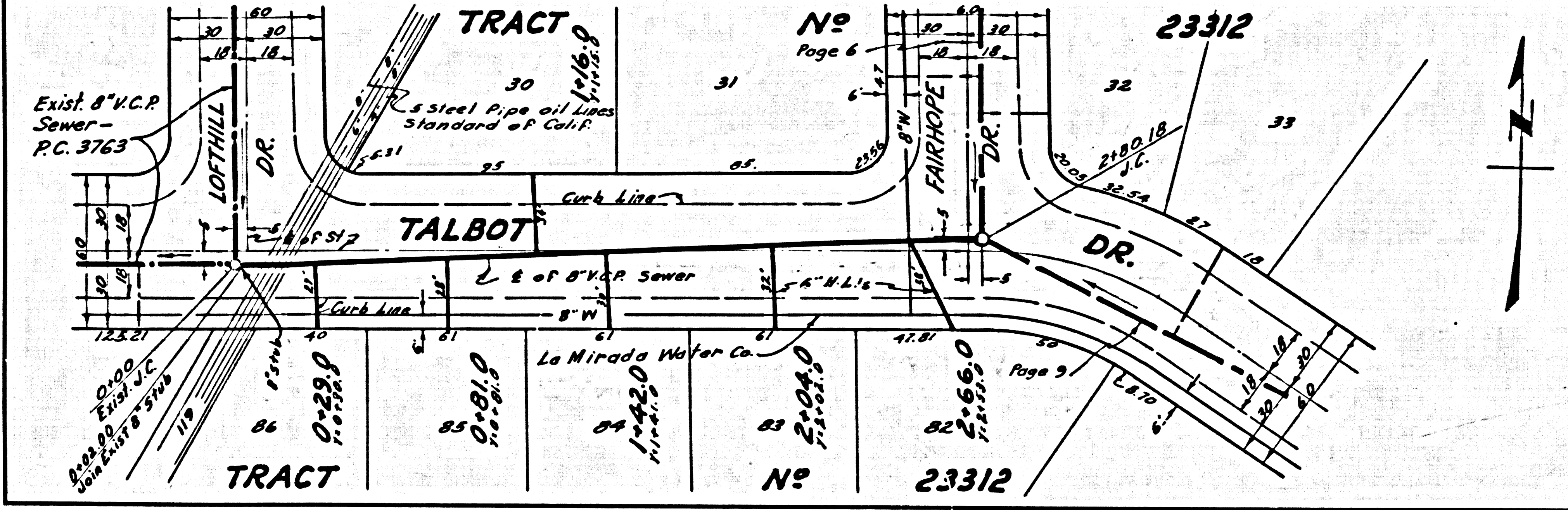
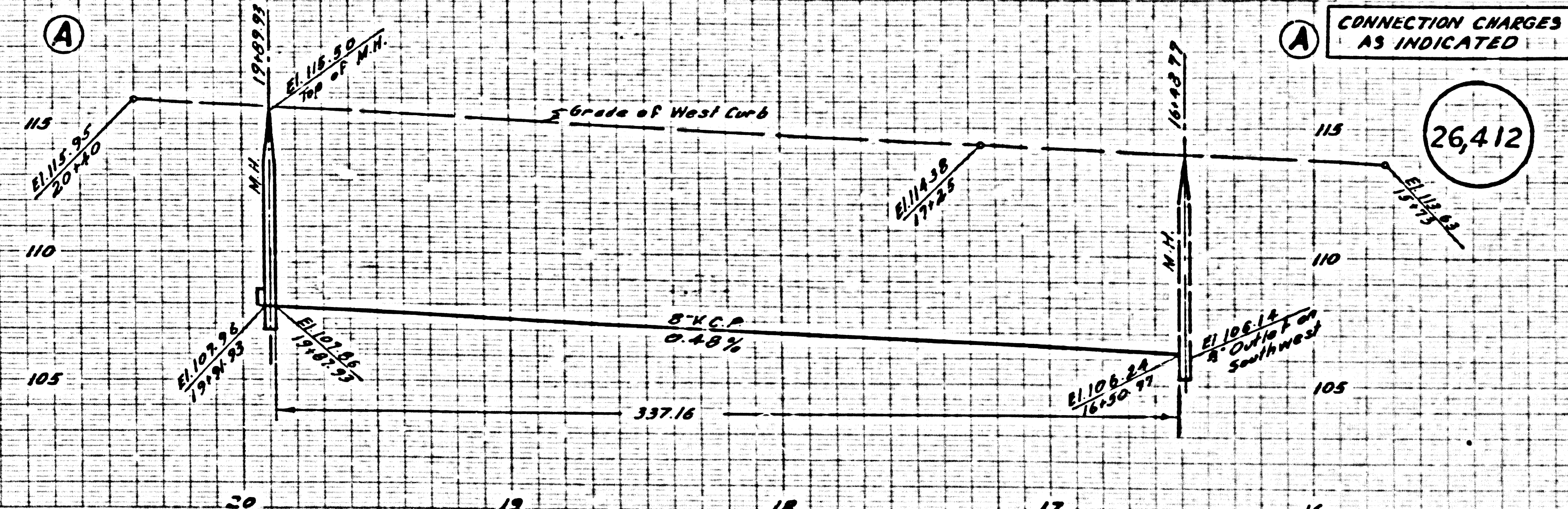
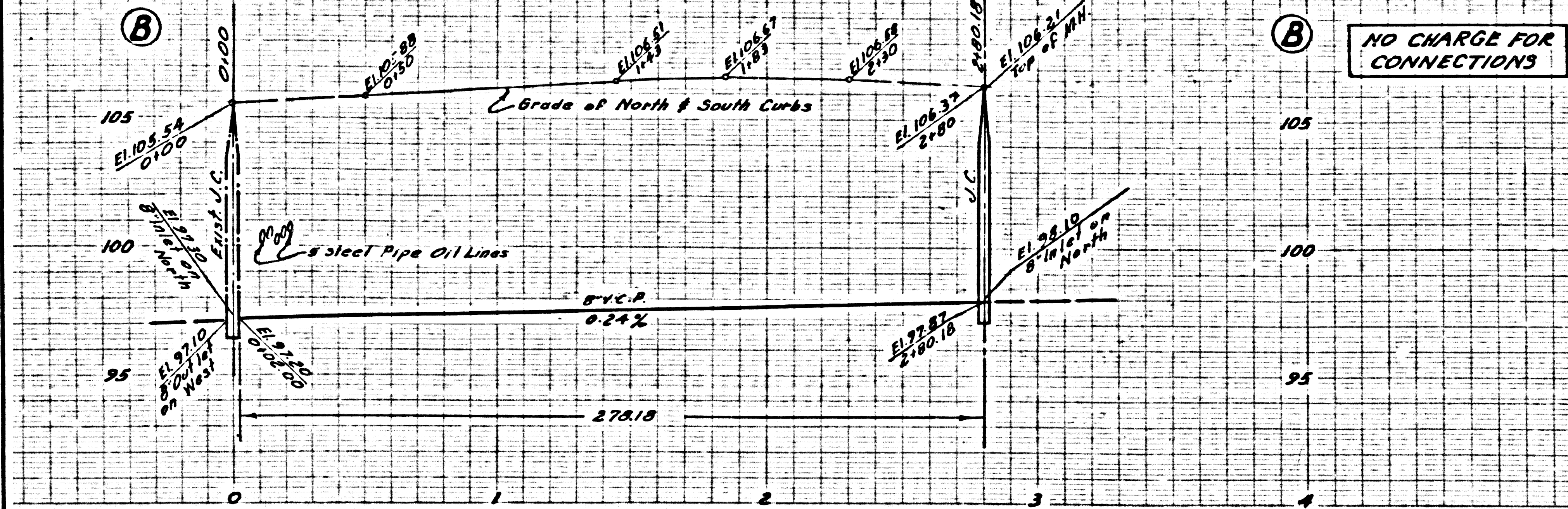


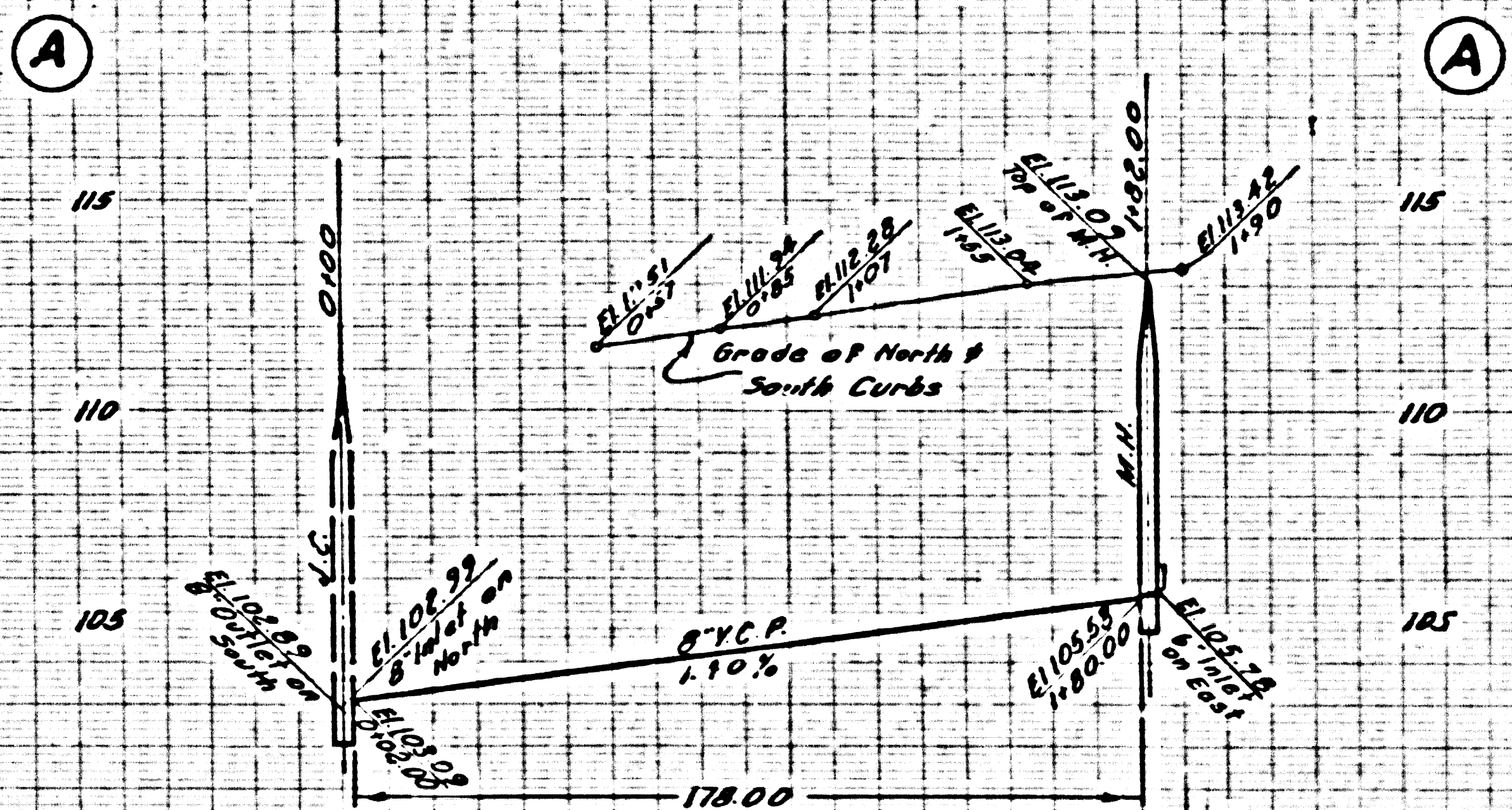
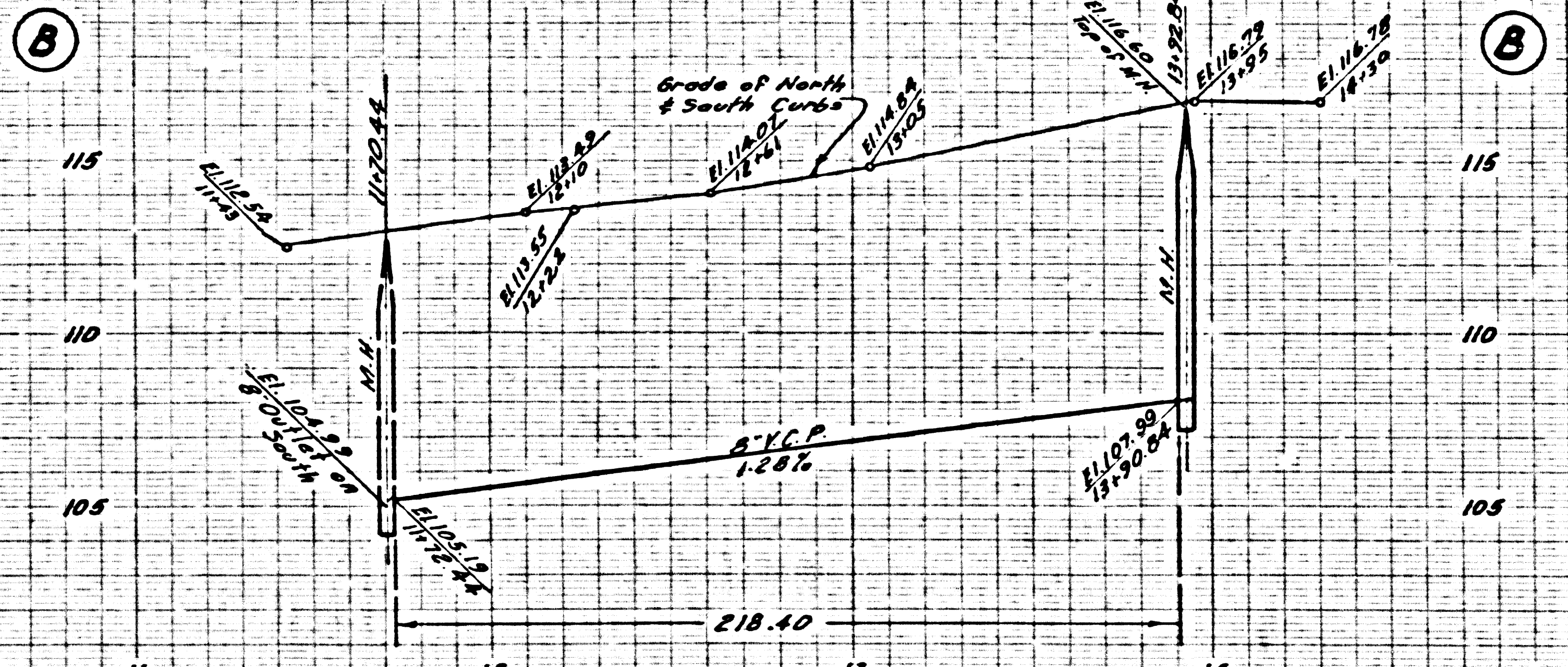
NO CHARGE FOR CONNECTIONS

26,411



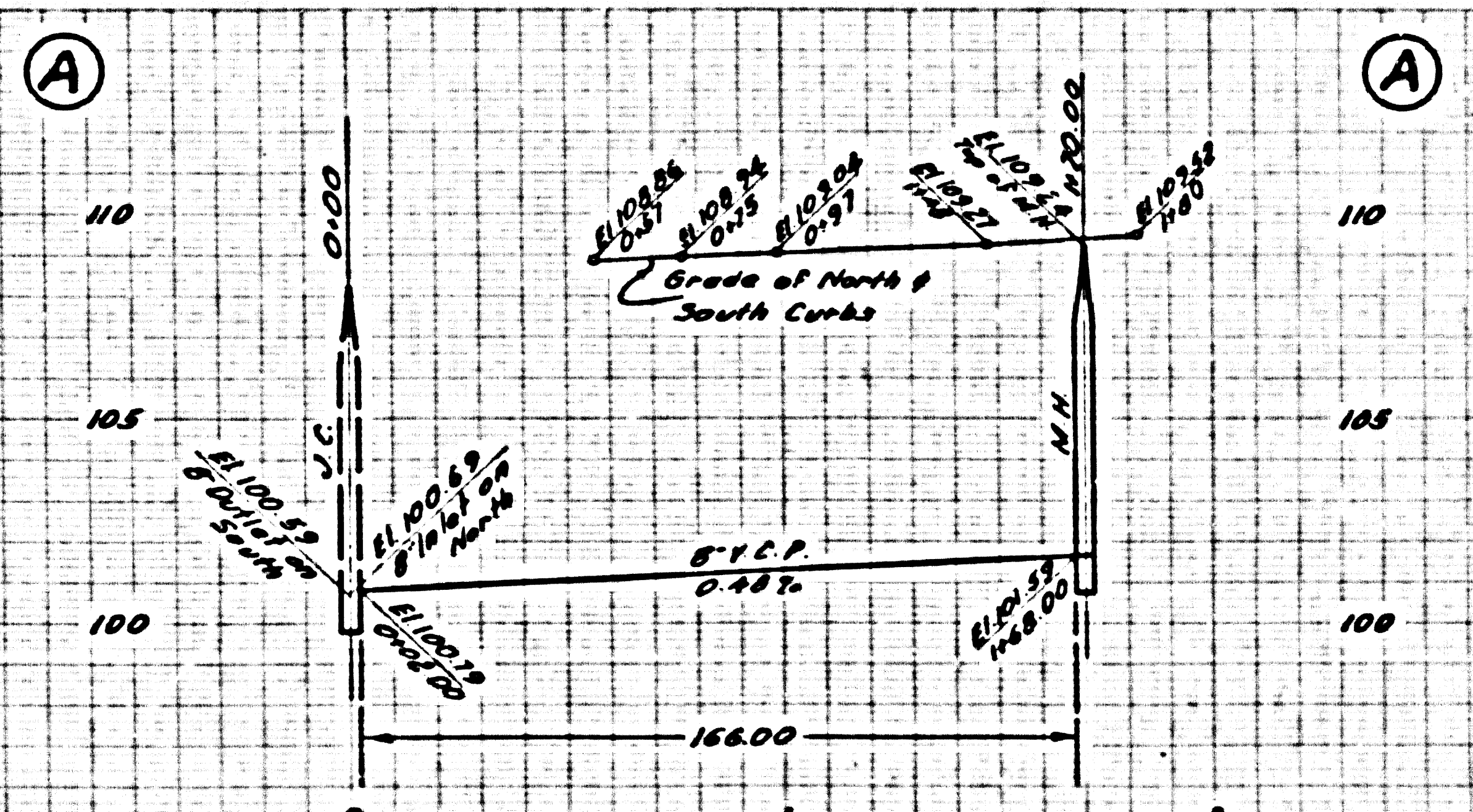
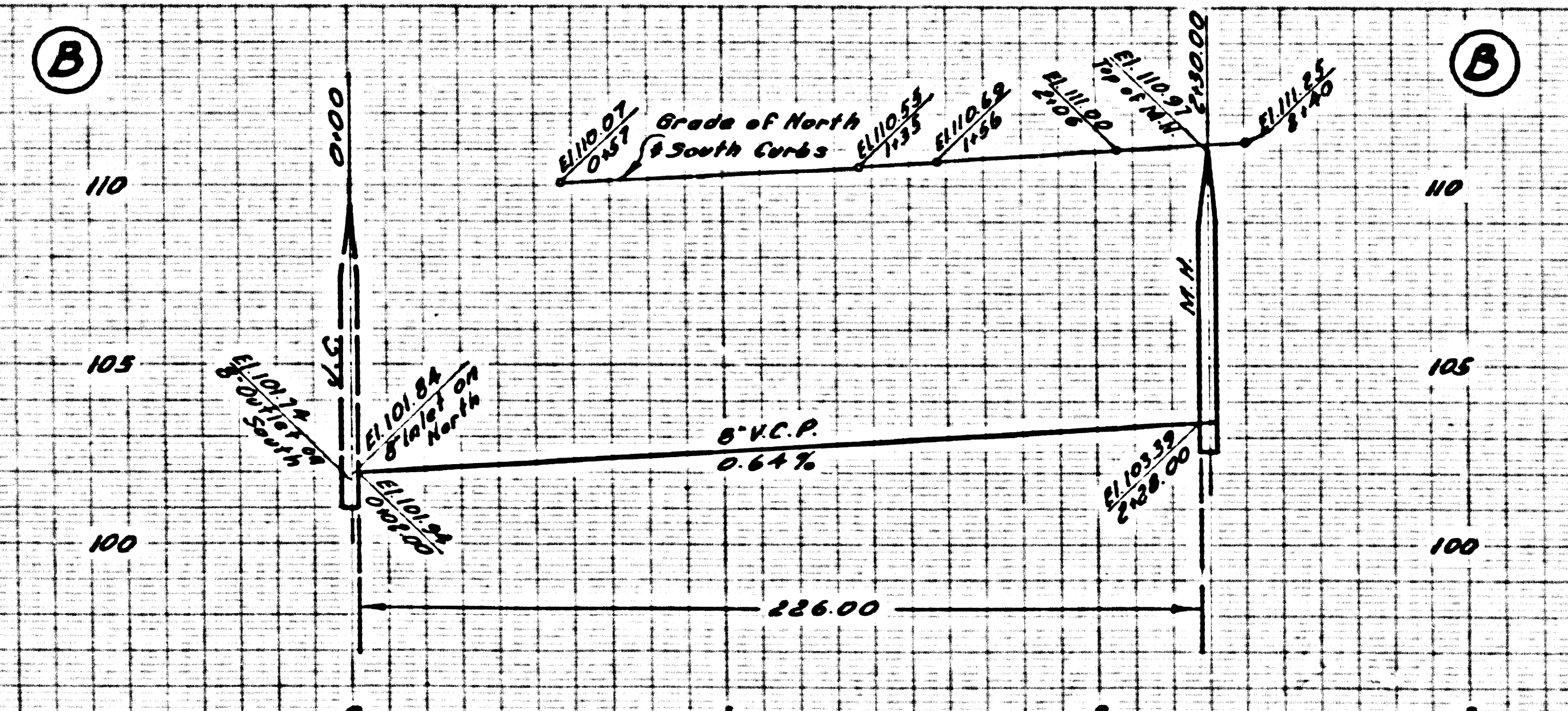
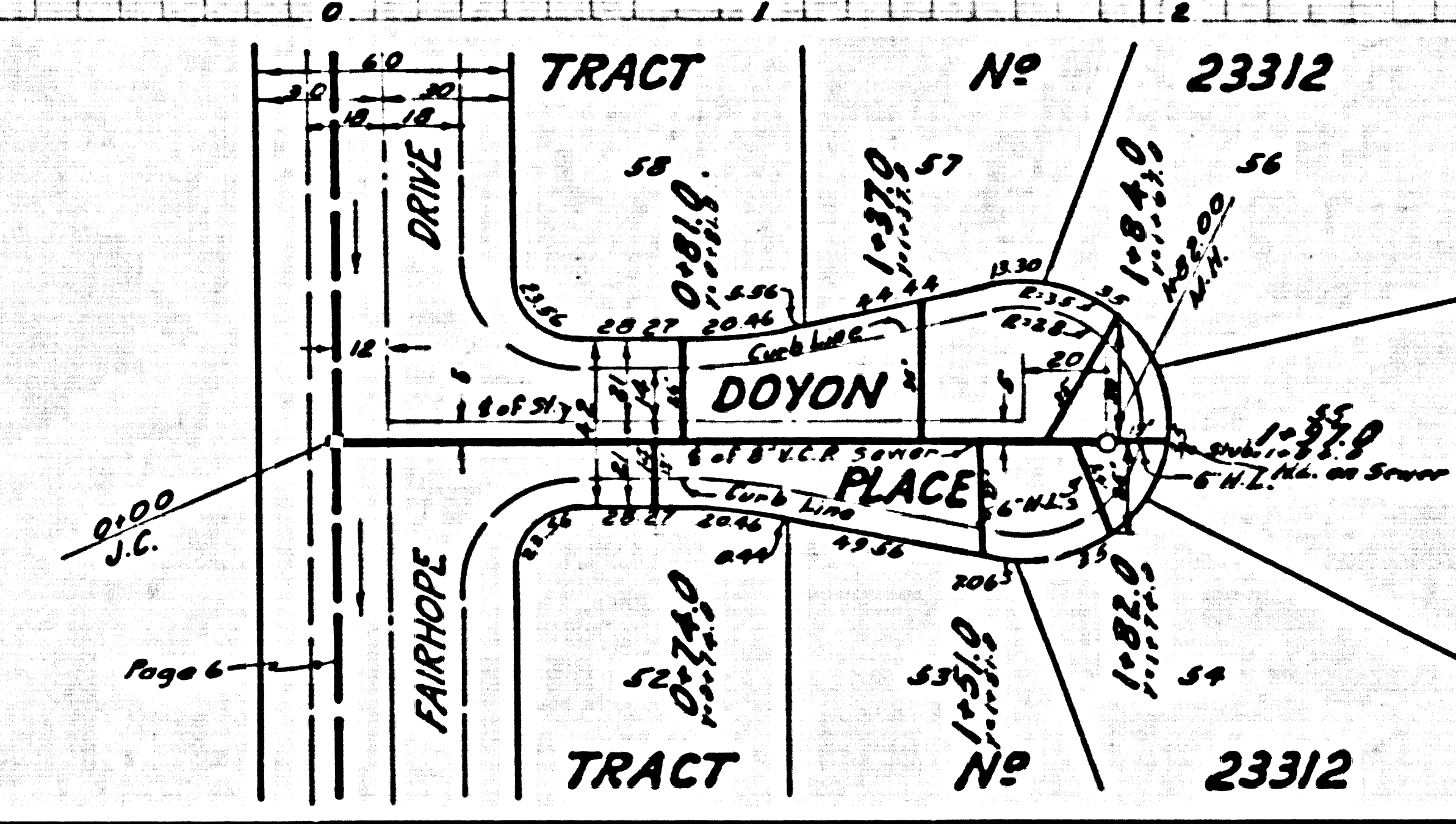
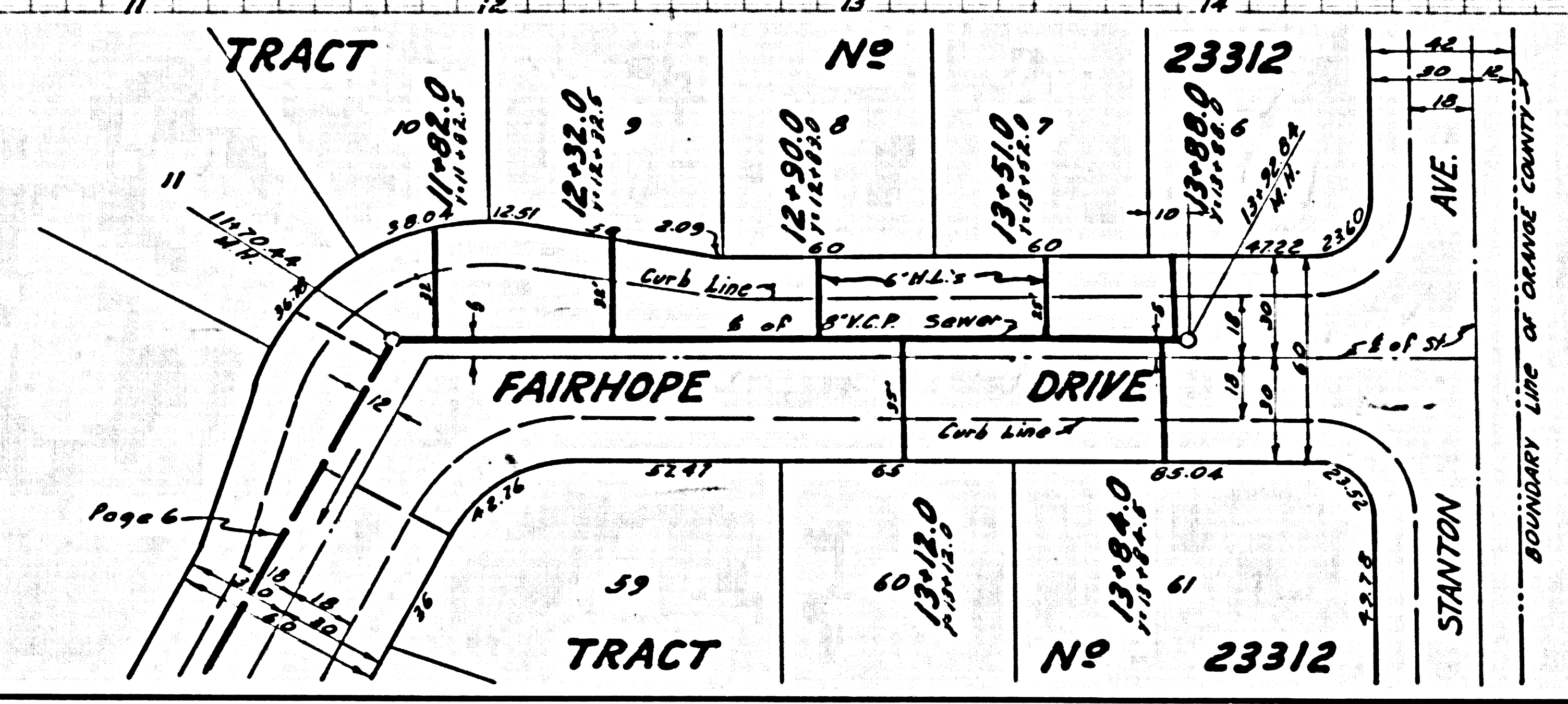
APPROVED: *[Signature]* 9-17-58  
 OFFICE OF COUNTY ENGINEER  
 S.A. C.E.M. 9406





NO CHARGE FOR CONNECTIONS

26,414



NO CHARGE FOR CONNECTIONS

26,415

