

Bench Mark:  
L.A. Co. Road Department S.L. 12 L&T in  
curb N.E. Cor. of 10<sup>th</sup> St. W & Ave "J".  
Elev. 2361.944  
1957 Adj 2361.138

LANCASTER BLDG. DIST. NO. 8

PROFILE ALIGNMENT AND GRADE OF P.C. 4464  
SANITARY SEWERS PAGE 1  
TO BE CONSTRUCTED IN

TRACT NO. 23930  
PRIVATE CONTRACT NO. 4464

W.S. 71  
3 SHEETS, 3 PAGES  
SCALE: VERT. 1" = 4' HORIZ. 1" = 40'  
MAY 24, 1957  
PREPARED IN THE OFFICES OF

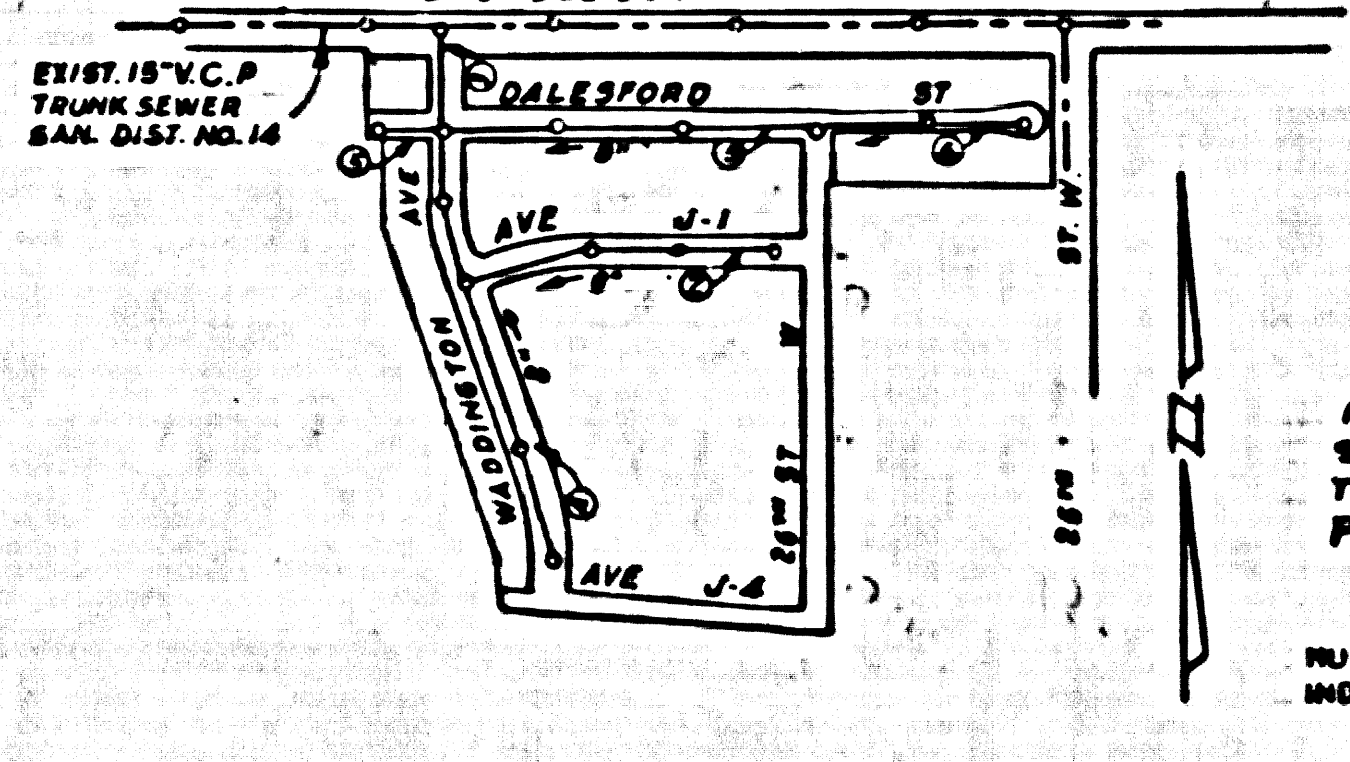
JENNINGS ENGINEER  
By *E. J. Jennings*  
REG. C. E. NO. 12121  
FOR LEGEND SEE PLAN NO. S-A-64

- NOTES:  
1. PROVIDE STAKES ON THE PROPERTY LINE OR PROPERTY LINES PRODUCED AT RIGHT ANGLES TO THE SEWER LINE AT THE CENTER LINE OF EACH MANHOLE.  
2. NO REPRESENTATIVE OF THE COUNTY ENGINEER WILL SURVEY OR LAYOUT ANY PORTION OF THE WORK.  
3. THE OWNER OR HIS AUTHORIZED REPRESENTATIVE SHALL FURNISH THE COUNTY ENGINEER WITH GRADE SHEETS AND STATION FOR ALL HOUSE LATERALS AND Y BRANCHES AND SHALL PROVIDE STAKES FOR THEM AT THEIR PROPER LOCATIONS WITH STATIONING PLANNED ALONG. ANY CHANGE IN LOCATION SHALL BE REQUESTED IN WRITINGS BY THE OWNER OR HIS REPRESENTATIVE.  
4. NO REVISIONS SHALL BE MADE IN THESE PLANS WITHOUT THE APPROVAL OF THE COUNTY ENGINEER.  
5. USE STANDARD MANHOLE FRAMES AND COVERS, S-A-117, EXCEPT AS NOTED.  
6. USE STANDARD STRENGTH PIPE EXCEPT AS NOTED.  
7. USE CEMENT MORTAR FOR ALL VITRIFIED CLAY PIPE JOINTS.  
8. RESURFACE ALL TRENCH WITHIN PAVED AREA TO MEET L. A. COUNTY ROAD DEPT., OR CALIF. STATE HIGHWAY DEPT. REQUIREMENTS IN ACCORDANCE WITH PERMITS.  
9. ENCASE FOUR FEET OF SEWER AT POINTS OF INTERFERENCE WITH POLES, S-A-119.  
10. HOUSE LATERALS TO BE CONSTRUCTED WITH INVERTS AT PROPERTY LINE 6" BELOW CURB GRADE EXCEPT AS NOTED.  
11. ALL STRUCTURES SHALL BE BRICK SEWER STRUCTURES, S-A-104, EXCEPT AS NOTED.  
12. FOR ALLOWABLE LEAKAGE TEST USE FORMULA NO. 1, SPEC. SEC. 24  
13. MANHOLE ROOF IN UNIMPROVED SHORTCUTWAY TO BE 4" ABOVE FINISHED GRADE.  
14. PALMDALE AND LANCASTER AREAS ONLY  
15. SHALL ALL PIPE JOINTS WITH CEMENT MORTAR THAT ARE WITHIN 50 FEET OF ALL PROPERTY LINES OR IN SANITARY SEWER R/W.  
16. THE CONTRACTOR SHALL NOTIFY THE CONSTRUCTION AND STORM DRAIN DIVISION BY TELEPHONE WHENEVER 2-8401 EXT. 40, AT LEAST 24 HOURS BEFORE STARTING ANY WORK UNDER THIS CONTRACT.  
17. THE PRIVATE ENGINEER IS TO FURNISH THE HOUSE LATERAL DEPTH AT THE PROPERTY LINE BELOW THE TOP OF CURB ELEVATION FOR EACH HOUSE LATERAL, ON THE GRADE SHEET.

5. need bond & agreement  
6. want Fee of \$148.00

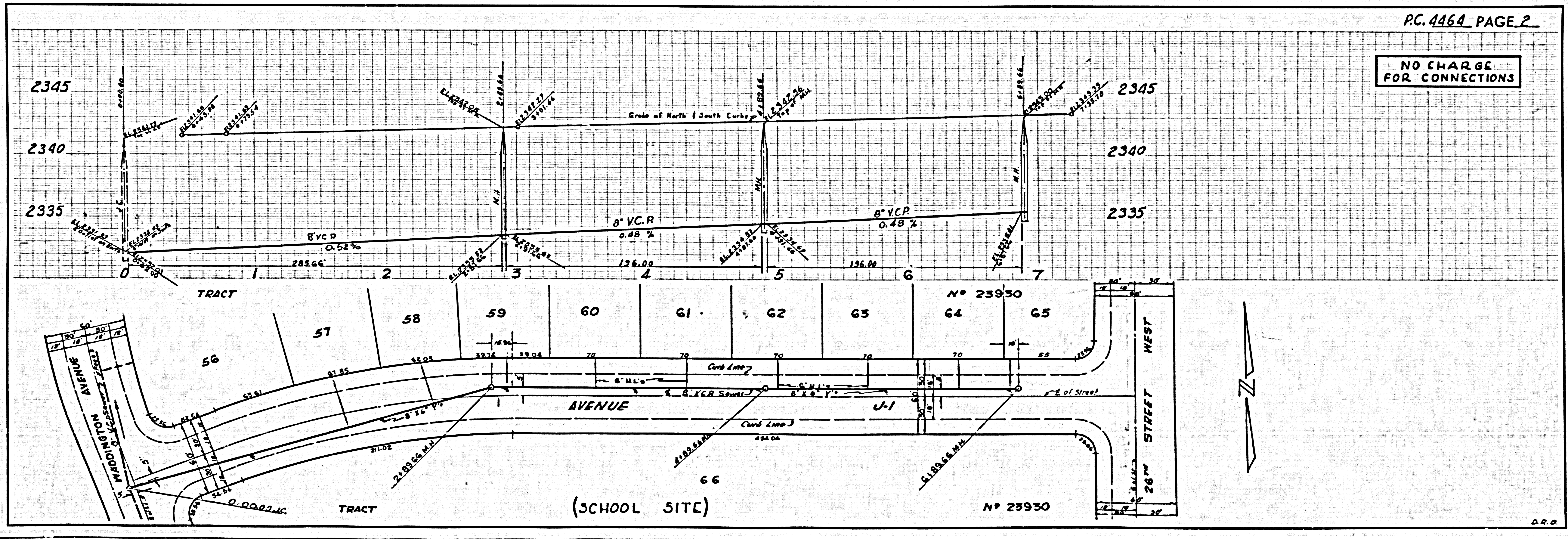
NO CHARGE FOR CONNECTIONS  
*R. B. O'Leary*

DO NOT ISSUE HOUSE SEWER PERMITS  
UNTIL TRACT No. 23930 HAS BEEN RECORDED



NOTE:  
GRADES TO WHICH THIS IMPROVEMENT IS TO BE CONSTRUCTED ARE SHOWN ON PLANS AND PROFILE. GRADE POINTS FOR TOP OF CURB, CENTER LINE OF STREET, OR CENTER LINE OF ALLEYS ARE SHOWN BY CIRCLES ON PROFILES. AT ALL POINTS BETWEEN DESIGNATED POINTS THE GRADE SHALL BE ESTABLISHED SO AS TO CONFORM TO A STRAIGHT LINE DRAWN BETWEEN SAID DESIGNATED POINTS.  
ELEVATIONS ARE IN FEET ABOVE U.S.C. & G.S. MEAN LEVEL DATUM OF 1929.  
THIS DRAWING AND THE DATA HEREON ARE HEREBY MADE A PART OF THE SPECIFICATIONS.  
WORK SHALL BE CONSTRUCTED ACCORDING TO SPECIFICATIONS ON FILE IN THE OFFICE OF THE COUNTY ENGINEER AND SHALL BE PROSECUTED ONLY IN THE PRESENCE OF THE COUNTY ENGINEER.  
BEFORE WORK CAN BE STARTED, THE CONTRACTOR MUST OBTAIN A PERMIT TO EXCAVATE IN COUNTY STREETS FROM THE L. A. COUNTY ROAD DEPT., 100 W. 5th ST. AND MAKE A DEPOSIT WITH THE COUNTY ENGINEER, ROOM 334 PLAN AMERICAN BUILDING, 333 SO. BROADWAY SUFFICIENT TO COVER THE COST OF CONSTRUCTION INSPECTION AND RECORD PLANS.  
APPROVAL OF THIS PLAN BY THE COUNTY OF LOS ANGELES DOES NOT CONSTITUTE A REPRESENTATION AS TO THE ACCURACY OF THE LOCATION OF OR THE EXISTENCE OR NON-EXISTENCE OF ANY UNDERGROUND UTILITY PIPE, OR STRUCTURE WITHIN THE LIMITS OF THE PROJECT. THIS NOTE APPLIES TO ALL IN "S".  
IF WORK IS TO BE DONE IN A STATE HIGHWAY, A PERMIT MUST BE OBTAINED FROM THE STATE OF CALIFORNIA, DIVISION OF HIGHWAYS, 120 SOUTH BRIDGE STREET.

COUNTY OF LOS ANGELES, CALIFORNIA  
APPROVED, JOHN A. LAMBE, COUNTY ENGINEER  
APPROVED, A. M. BAWN, CHIEF ENGINEER  
CD. SAN. DIST. NO. 14  
BY *R. B. O'Leary* 9-12-57  
OFFICE OF COUNTY ENGINEER, BLDG. C. E. NO. 2242



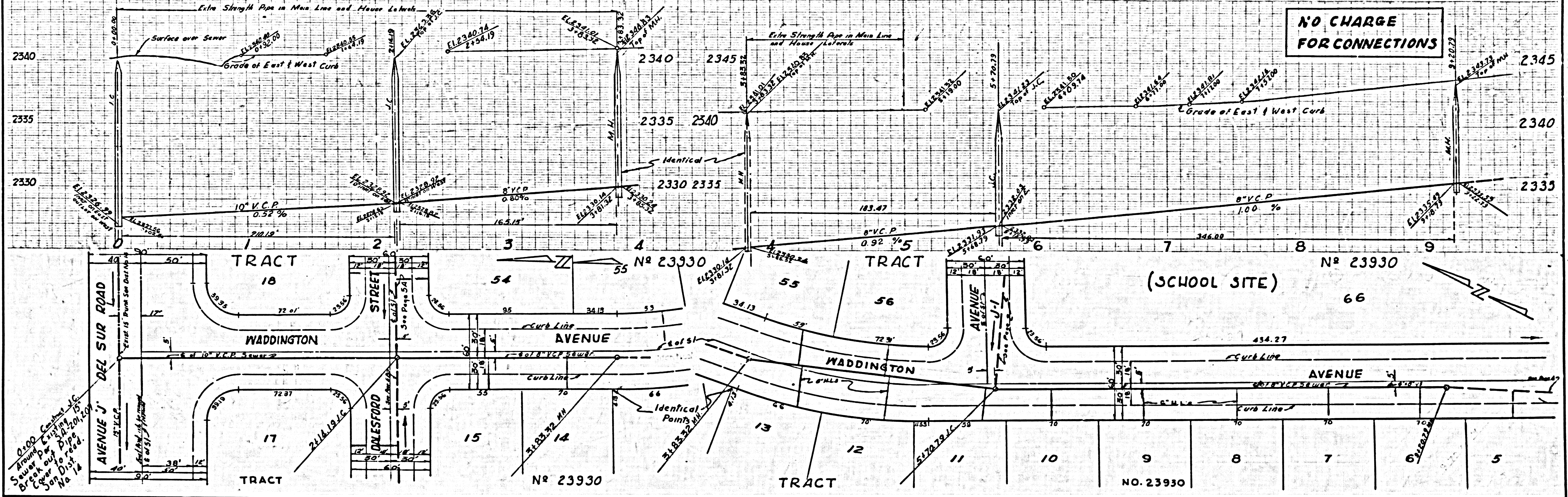
NO CHARGE FOR CONNECTIONS

P.C. 4464 PAGE 2

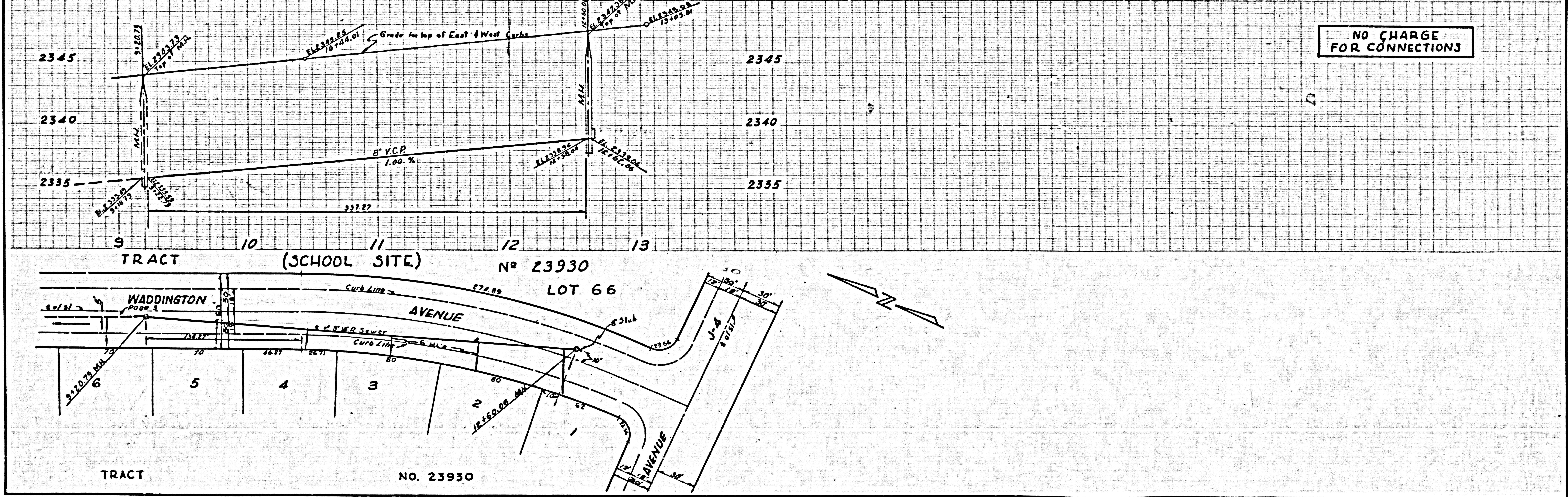
D.R.O.



NO CHARGE FOR CONNECTIONS

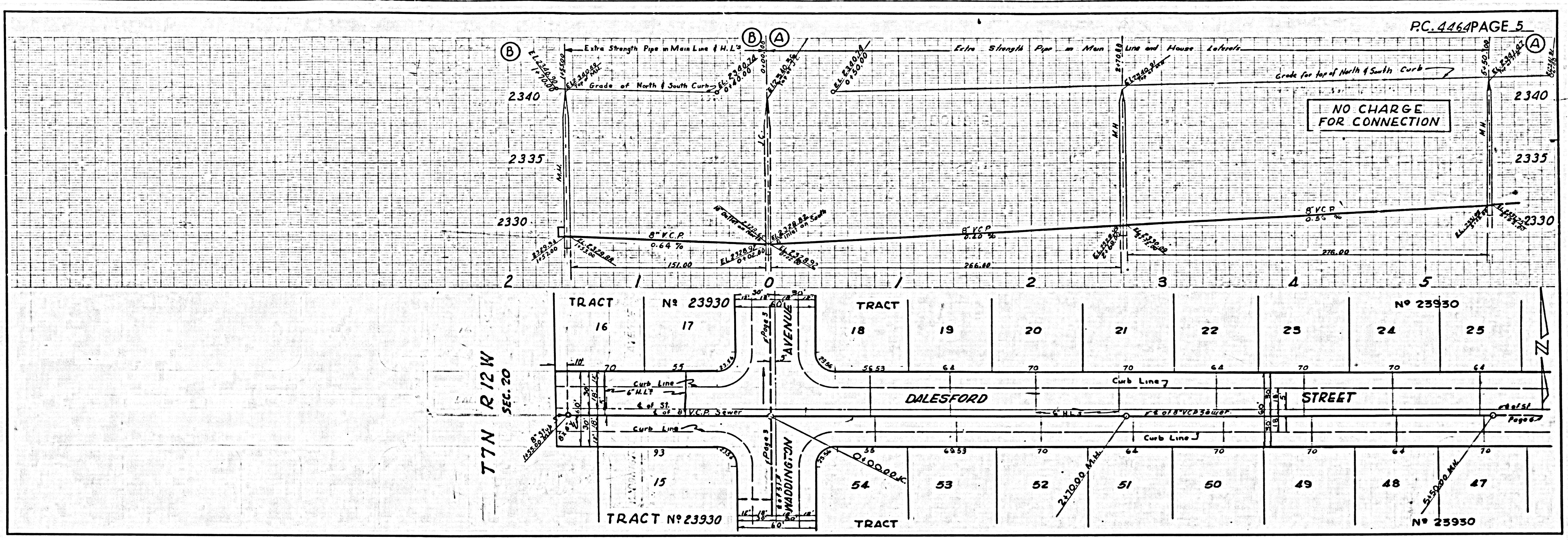


NO CHARGE FOR CONNECTIONS

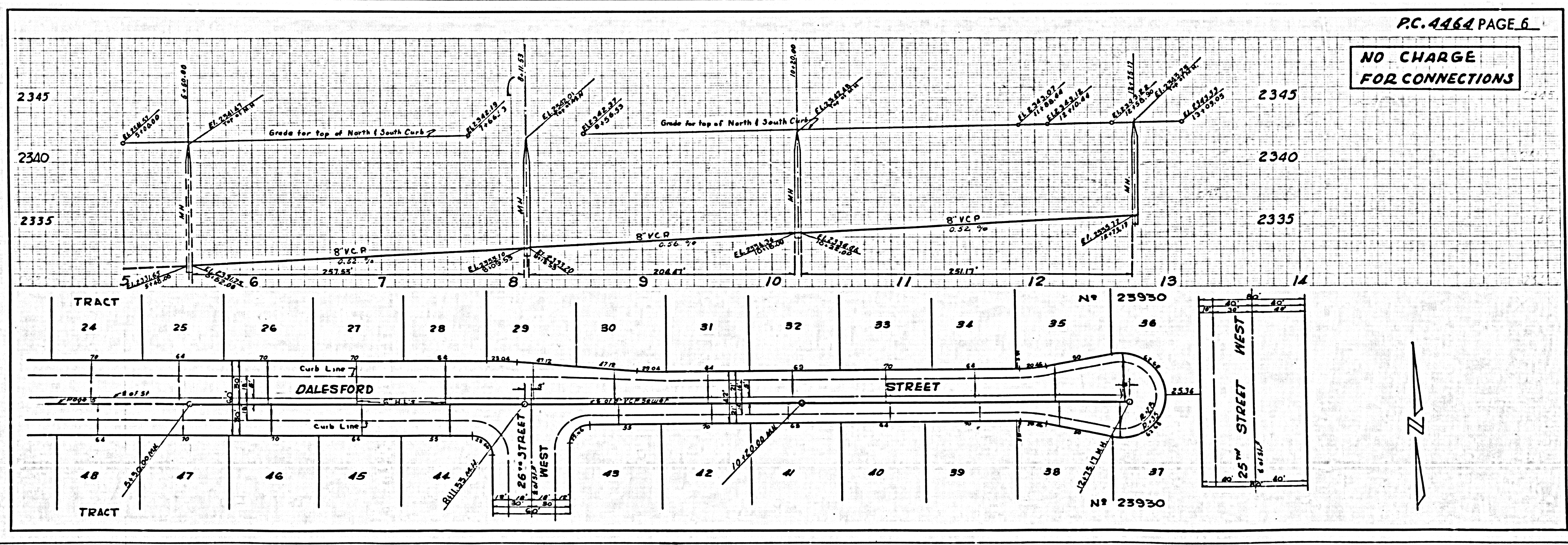


S. B. C. A. B. E. N.





C.C.A. 404



U.S. GEOLOGICAL SURVEY