

BELLFLOWER BLDG. DIST. NO. 4

PROFILE ALIGNMENT AND GRADE OF P.C. 4477
 SANITARY SEWERS PAGE 1
 TO BE CONSTRUCTED IN

TRACT N^o 23708

25,017

PRIVATE CONTRACT NO. 4477

W.S. 33

1 SHEET, 2 PAGES

SCALE: VERT. 1" = 4' HORIZ. 1" = 40'

JULY, 1957

PREPARED IN THE OFFICES OF

MANNING & DE TILLA

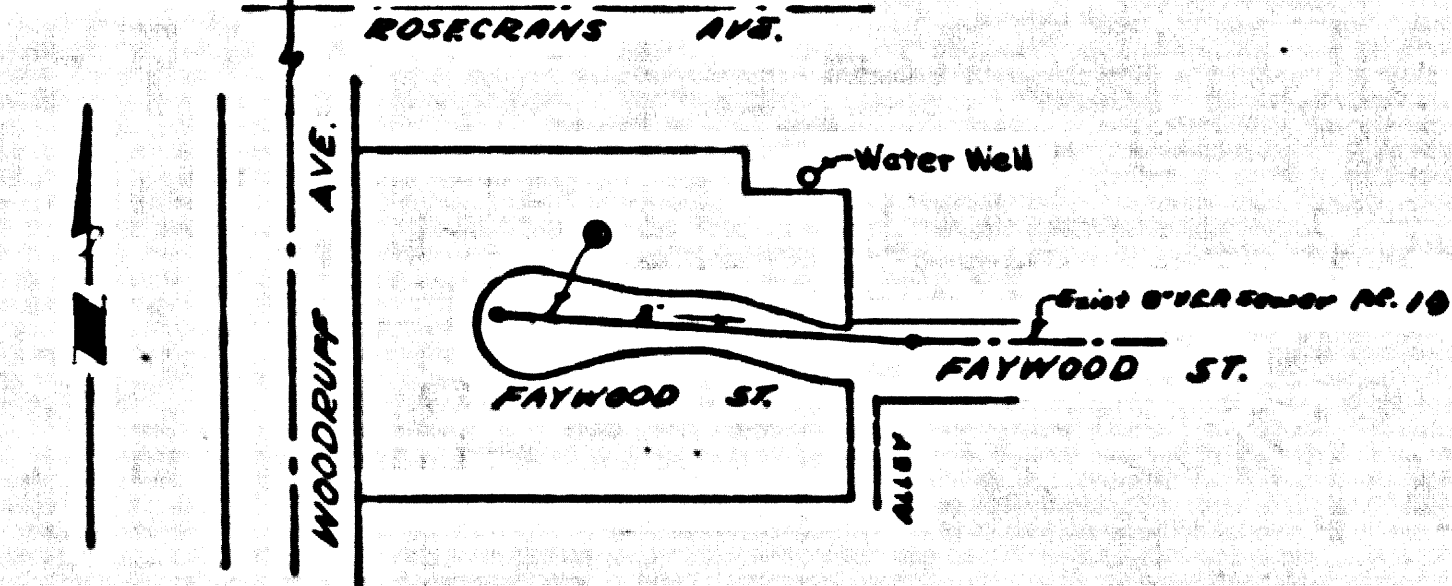
BY: J. L. Manning

REG. C. E. NO. 7676

FOR LEGEND SEE PLAN NO. S-A-64

BENCH MARK SY 2499 Elev. 83.251
 45 FT. on N. Ch. of Rosecrans Ave. @ Ch. ref.
 @ N.W. Cor. of Rosecrans Ave. & Carpenter
 Ave. (Base Line)

- NOTES:
- PROVIDE STAKES ON THE PROPERTY LINE OR PROPERTY LINES PRODUCED AT RIGHT ANGLES TO THE SEWER LINE AT THE CENTER LINE OF EACH MANHOLE.
 - NO REPRESENTATIVE OF THE COUNTY ENGINEER WILL SURVEY OR LAYOUT ANY PORTION OF THE WORK.
 - THE OWNER OR HIS AUTHORIZED REPRESENTATIVE SHALL FURNISH THE COUNTY ENGINEER WITH GRADE SHEETS AND STATIONING FOR ALL HOUSE LATERALS AND Y BRANCHES AND SHALL PROVIDE STAKES FOR THEM AT THEIR PROPER LOCATIONS WITH STATIONING AND PLAIN MARKS. ANY CHANGE IN LOCATION SHALL BE REQUESTED BY WRITING BY THE OWNER OR HIS REPRESENTATIVE.
 - NO REVISIONS SHALL BE MADE IN THESE PLANS WITHOUT THE APPROVAL OF THE COUNTY ENGINEER.
 - USE STANDARD MANHOLE FRAMES AND COVERS, S-A-117, EXCEPT AS NOTED.
 - USE STANDARD STRENGTH PIPE EXCEPT AS NOTED.
 - USE CEMENT MORTAR FOR ALL VITRIFIED CLAY PIPE JOINTS.
 - RESURFACE ALL TRENCH WITHIN PAVED AREA TO MEET L.A. COUNTY ROAD DEPT., OR CALIF. STATE HIGHWAY DEPT. REQUIREMENTS IN ACCORDANCE WITH PERMITS.
 - INCREASE FOUR FEET OF SEWER AT POINTS OF INTERFERENCE WITH POLES, CANS, E., S-A-172.
 - HOUSE LATERALS TO BE CONSTRUCTED WITH 3/4" RISE PER FOOT TO PROPERTY LINE.
 - ALL STRUCTURES SHALL BE BRICK SEWER STRUCTURES, S-A-104, EXCEPT AS NOTED.
 - FOR ALLOWABLE LEAKAGE TEST USE FORMULA NO. 1, SPCS, SEC. 54.
 - MANHOLE TOPS IN UNIMPROVED RIGHTS-OF-WAY TO BE 6" ABOVE FINISHING GRADE.
 - BALL ALL PIPE JOINTS WITH 1/2" OF CEMENT MORTAR.



INDEX MAP
 P.C. 4477
 SCALE: 1" = 200'

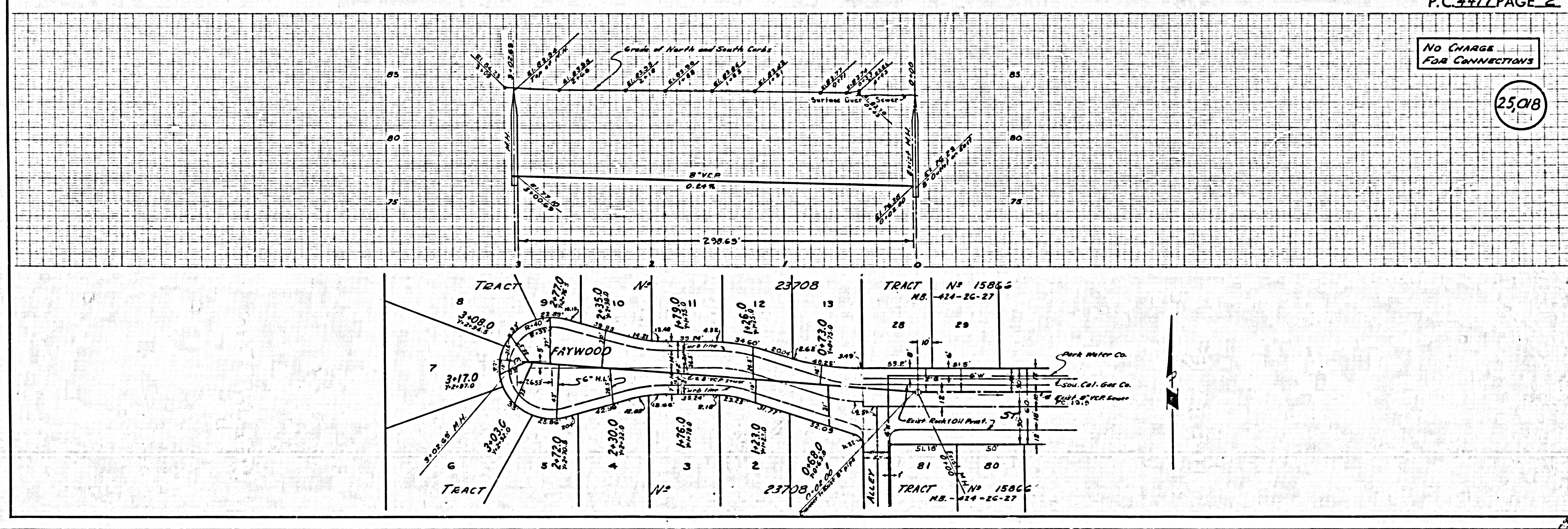
NO CHARGE
 FOR CONNECTIONS
 J. L. Manning 7-21-57

- NOTE:
- THE PRIVATE ENGINEER SHALL FURNISH THE HOUSE LATERAL DEPTH AT THE PROPERTY LINE BELOW THE TOP OF CURB ELEVATION FOR EACH HOUSE LATERAL ON THE GRADE SHEET.
 - THE CONTRACTOR SHALL NOTIFY THE CONSTRUCTION & STORM DRAIN DIVISION BY TELEPHONE, IMMEDIATELY, 24 HOURS BEFORE STARTING ANY WORK UNDER THIS CONTRACT.

NOTE:
 GRADES TO WHICH THIS IMPROVEMENT IS TO BE CONSTRUCTED ARE SHOWN ON PLANS AND PROFILES. GRADE POINTS FOR TOP OF CURBS, CENTER LINE OF STREETS, OR CENTER LINE OF ALLEYS ARE SHOWN BY CIRCLES ON PROFILES. AT ALL POINTS BETWEEN DESIGNATED POINTS THE GRADE SHALL BE ESTABLISHED SO AS TO CONFORM TO A STRAIGHT LINE DRAWN BETWEEN SAID DESIGNATED POINTS.
 ELEVATIONS ARE IN FEET ABOVE U.S.C.G.S. SEA LEVEL DATUM OF 1929.
 THIS DRAWING AND THE DATA HEREON ARE HEREBY MADE A PART OF THE SPECIFICATIONS.
 WORK SHALL BE CONSTRUCTED ACCORDING TO SPECIFICATIONS ON FILE IN THE OFFICE OF THE COUNTY ENGINEER AND SHALL BE INSPECTED ONLY IN THE PRESENCE OF THE COUNTY ENGINEER.
 BEFORE WORK CAN BE STARTED, THE CONTRACTOR MUST OBTAIN A PERMIT TO EXCAVATE IN COUNTY STREETS FROM THE L.A. COUNTY ROAD DEPT., 120 W. 4TH ST. AND MAKE A DEPOSIT WITH THE COUNTY ENGINEER, ROOM 234 FIVE AMERICAN BLDG., 253 50. BROADWAY SUFFICIENT TO COVER THE COST OF CONSTRUCTION INSPECTION AND RECORD PLANS.
 APPROVAL OF THIS PLAN BY THE COUNTY OF LOS ANGELES DOES NOT CONSTITUTE A REPRESENTATION AS TO THE ACCURACY OF THE LOCATION OF OR THE EXISTENCE OR NON-EXISTENCE OF ANY UNDERGROUND UTILITY PIPE, OR STRUCTURE WITHIN THE LIMITS OF THE PROJECT. THE NOTE APPLIES TO ALL PAGES.
 IF WORK IS TO BE DONE IN A STATE HIGHWAY, A PERMIT MUST BE OBTAINED FROM THE STATE OF CALIFORNIA, DIVISION OF HIGHWAYS, 120 SOUTH SPRING STREET.

COUNTY OF LOS ANGELES, CALIFORNIA
 APPROVED, JOHN A. LAMBE, COUNTY ENGINEER
 APPROVED, A. M. RAWIN, CHIEF ENGINEER
 BY: J. L. Manning
 SANITARY ENGINEER
 BY: A. M. Rawin
 OFFICE ENGINEER
 CHECKED BY: J. L. Manning
 OFFICE OF COUNTY ENGINEER, REG. C. E. NO. 3486

P.C. 4477 PAGE 2



NO CHARGE
 FOR CONNECTIONS

25,018