

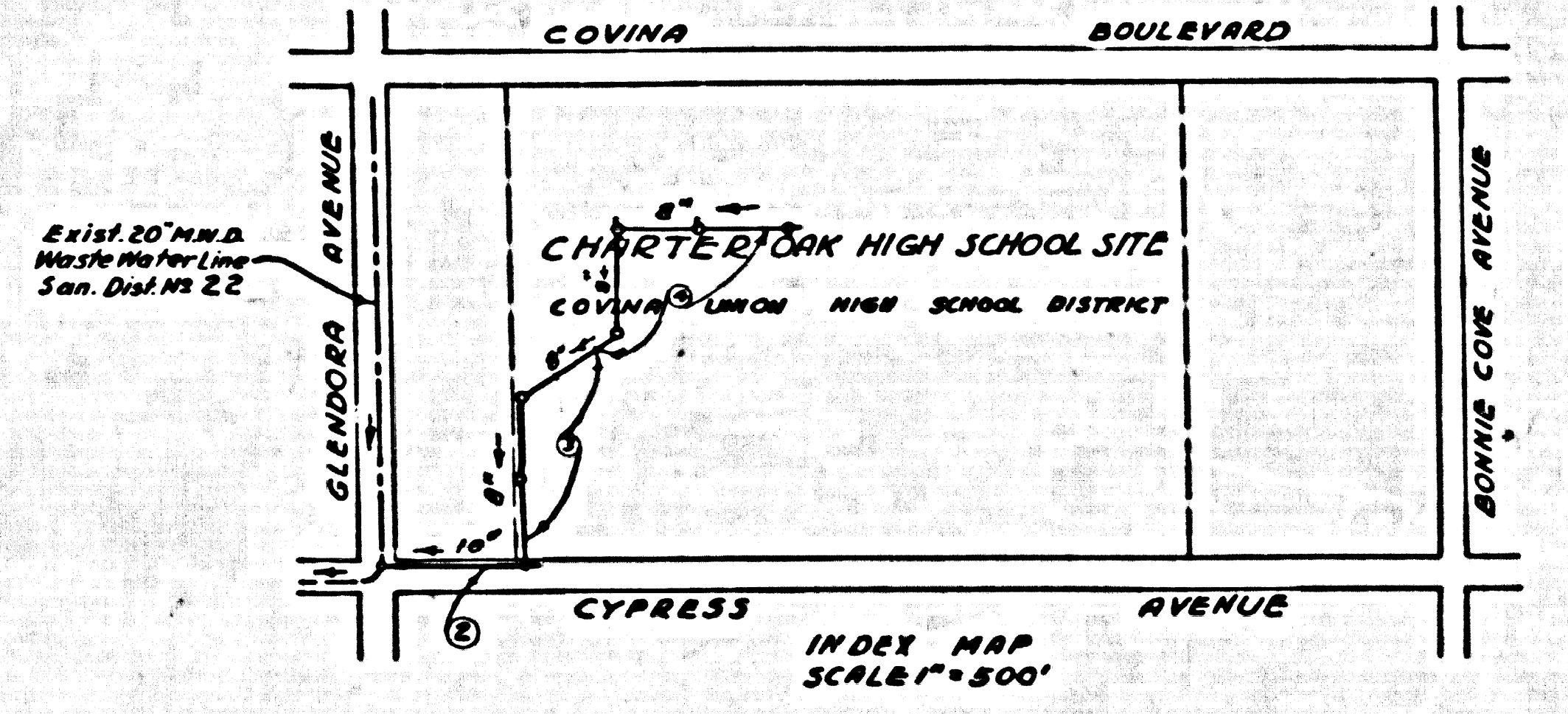
BENCH MARK: N.E.L. G. 50-A Triangulation Disc
in Conc. Post 39' East of E of Bonnie Ave.
11' 20" North of E of Covina Blvd.
ELEVATION = 710.668, 1952 Adj.

NOTE:
THE CONTRACTOR SHALL NOTIFY THE CONSTRUCTION AND
STORM DRAIN DIVISION BY TELEPHONE, MADISON 9-4747,
EXT. 362, AT LEAST 24 HOURS BEFORE STARTING ANY
WORK UNDER THIS CONTRACT.

CONNECTION CHARGES
AS INDICATED
L. Carter 11-12-57

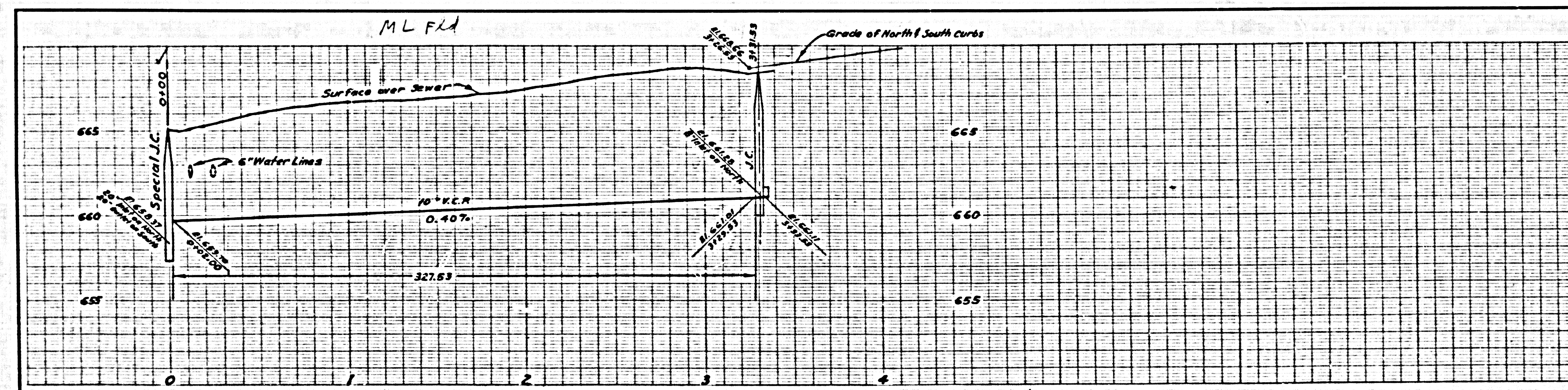
SAN DIMAS BLDG. DIST. NO. 10

- NOTES:
- PROVIDE STAKES ON THE PROPERTY LINE OR PROPERTY LINES PRODUCED AT RIGHT ANGLES TO THE SEWER LINE AT THE CENTER LINE OF EACH MANHOLE.
 - NO REPRESENTATIVE OF THE COUNTY ENGINEER WILL SURVEY OR LAYOUT ANY PORTION OF THE WORK.
 - THE OWNER OR HIS AUTHORIZED REPRESENTATIVE SHALL FURNISH THE COUNTY ENGINEER WITH GRADE SHEETS AND STATION FOR ALL HOUSE LATERALS AND Y BRANCHES AND SHALL PROVIDE STAKES FOR THEM AT THEIR PROPER LOCATION WITH STATIONING PLAINLY MARKED. ANY CHANGE IN LOCATION SHALL BE REQUESTED IN WRITING BY THE OWNER OR HIS REPRESENTATIVE.
 - NO REVISIONS SHALL BE MADE IN THESE PLANS WITHOUT THE APPROVAL OF THE COUNTY ENGINEER.
 - USE STANDARD MANHOLE FRAMES AND COVERS, S-A-117, EXCEPT AS NOTED.
 - USE STANDARD STRENGTH PIPE EXCEPT AS NOTED.
 - USE CEMENT MORTAR FOR ALL VITRIFIED CLAY PIPE JOINTS.
 - RESURFACE ALL TRENCH WITHIN PAVED AREA TO MEET L. A. COUNTY ROAD DEPT., OR CALIF. STATE HIGHWAY DEPT. REQUIREMENTS IN ACCORDANCE WITH PERMITS.
 - INDICATE FOUR FEET OF SEWER AT POINTS OF INTERFERENCE WITH POLES, S-A-119.
 - HOUSE LATERALS TO BE CONSTRUCTED WITH DIVERSITY AT PROPERTY LINE - FEET BELOW CURB GRADE EXCEPT AS NOTED.
 - ALL STRUCTURES SHALL BE BRICK SEWER STRUCTURES, S-A-184, EXCEPT AS NOTED.
 - FOR ALLOWABLE LEAKAGE TEST USE FORMULA NO. 1, S.P.C.E., SEC. 31.
 - MANHOLE TOPS IN UNIMPROVED RIGHTS-OF-WAY TO BE 6" ABOVE FINISHED GRADE.

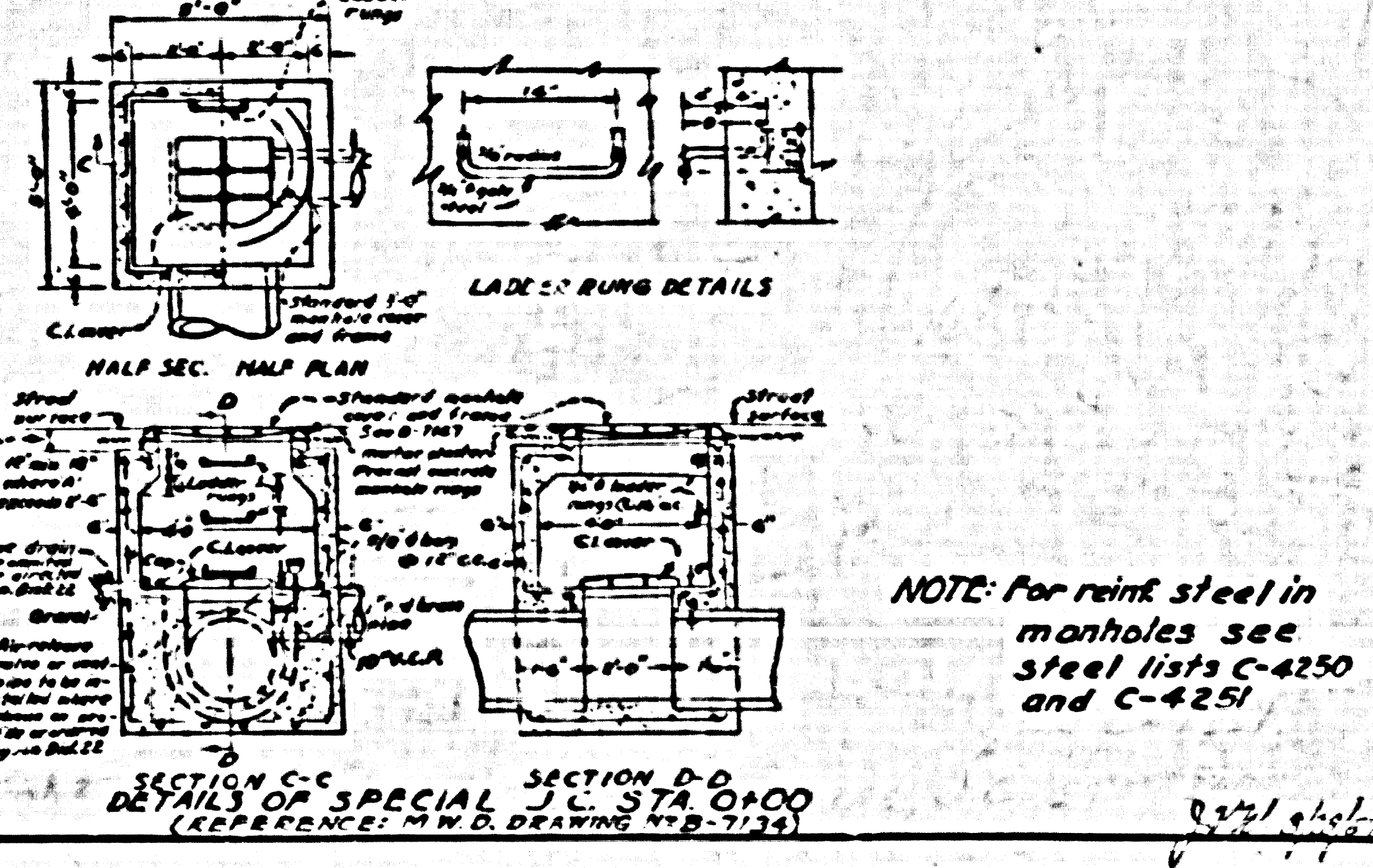
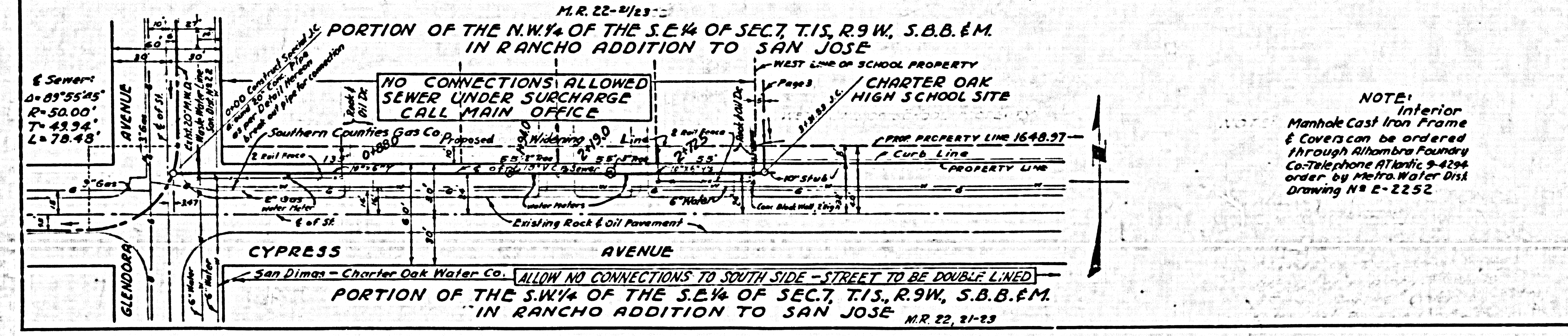


PROFILE ALIGNMENT AND GRADE OF **P.C. 4478**
SANITARY SEWERS PAGE 1
TO BE CONSTRUCTED IN
CYPRESS AVENUE
AND
CHARTER OAK HIGH SCHOOL SITE
PRIVATE CONTRACT NO. 4478
W.S. 48
3 SHEETS; 4 PAGES
SCALE: VERT. 1" = 4' HORIZ. 1" = 40' **JUNE, 1957**
PREPARED IN THE OFFICES OF
KISTNER, WRIGHT & WRIGHT
ARCHITECTS AND ENGINEERS
By: *P.C. Vander Bosch*
REG. C. E. NO. 6417
FOR LEGEND SEE PLAN NO. S-A-64

NOTE:
GRADES TO WHICH THIS IMPROVEMENT IS TO BE CONSTRUCTED ARE SHOWN ON PLANS AND PROFILE. GRADE POINTS FOR TOP OF CURBS, CENTER LINE OF STREETS, OR CENTER LINE OF ALLEYS ARE SHOWN BY CIRCLES ON PROFILES. AT ALL POINTS BETWEEN DESIGNATED POINTS THE GRADE SHALL BE ESTABLISHED SO AS TO CONFORM TO A STRAIGHT LINE DRAWN BETWEEN SAID DESIGNATED POINTS.
ELEVATIONS ARE IN FEET ABOVE U.S.C. & G.S. SEE LEVEL DATUM ON P. 29.
THIS DRAWING AND THE DATA HEREON ARE HEREBY MADE A PART OF THE SPECIFICATIONS.
WORK SHALL BE CONSTRUCTED ACCORDING TO SPECIFICATIONS ON FILE IN THE OFFICE OF THE COUNTY ENGINEER AND SHALL BE PROSECUTED ONLY IN THE PRESENCE OF THE COUNTY ENGINEER.
BEFORE WORK CAN BE STARTED, THE CONTRACTOR MUST OBTAIN A PERMIT TO EXCAVATE IN COUNTY STREETS FROM THE L. A. COUNTY ROAD DEPT., 128 W. 3RD ST. AND MAKE A DEPOSIT WITH THE COUNTY ENGINEER, ROOM 334 PAN AMERICAN BLDG., 333 3D, BROADWAY, SUFFICIENT TO COVER THE COST OF CONSTRUCTION INSPECTION AND RECORD PLANS.
APPROVAL OF THIS PLAN BY THE COUNTY OF LOS ANGELES DOES NOT CONSTITUTE A REPRESENTATION AS TO THE ACCURACY OF THE LOCATION OF OR THE EXISTENCE OR NON-EXISTENCE OF ANY UNDERGROUND UTILITY PIPE, OR STRUCTURE WITHIN THE LIMITS OF THIS PROJECT. THIS NOTE APPLIES TO ALL PAGES.
IF WORK IS TO BE DONE IN A STATE HIGHWAY, A PERMIT MUST BE OBTAINED FROM THE STATE OF CALIFORNIA, DIVISION OF HIGHWAYS, 138 SOUTH SPRING STREET.
COUNTY OF LOS ANGELES, CALIFORNIA
APPROVED, JOHN A. LAMBE, COUNTY ENGINEER
BY: *N. P. Brumback* ASST. SANITATION ENGINEER
APPROVED, A. A. RAWIN, CHIEF ENGINEER
BY: *A. C. ...* OFFICE ENGINEER
CHECKED BY: *...* 10-12-57
OFFICE OF COUNTY ENGINEER, REG. C. E. NO. 3446



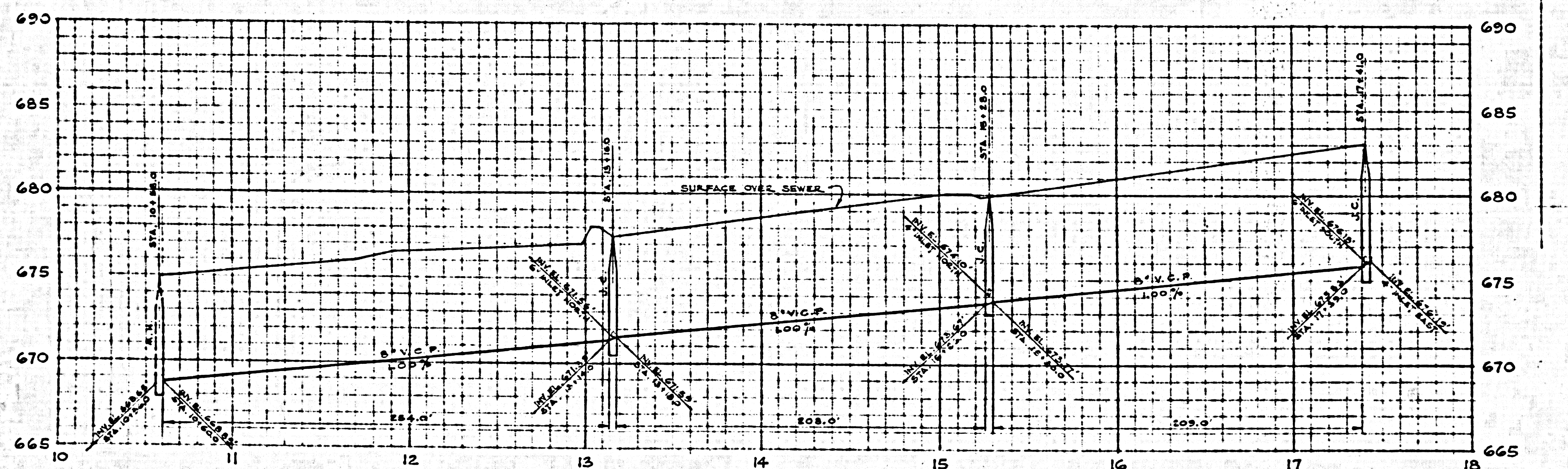
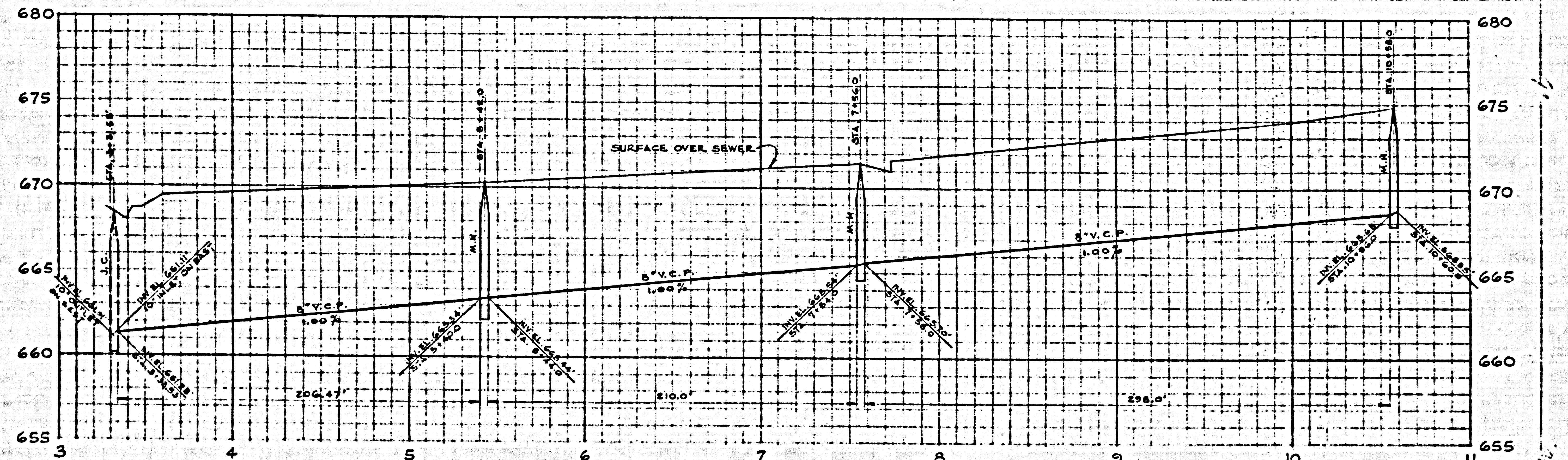
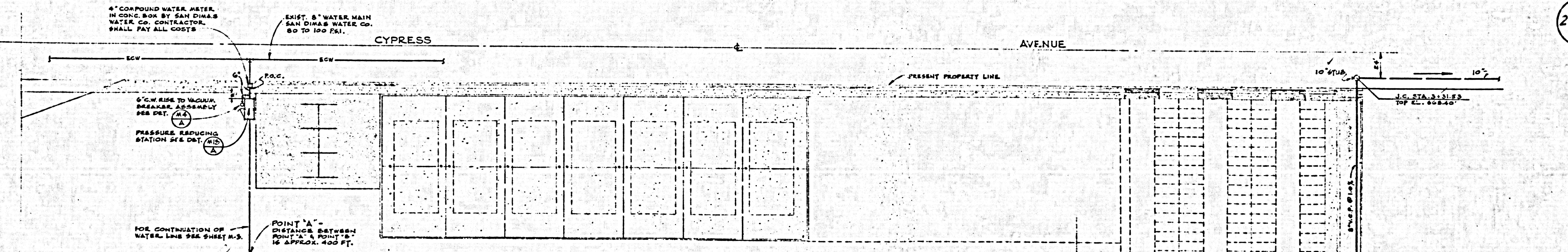
P.C. 4478 PAGE 2
CONNECTION CHARGES AS INDICATED
25,587
NOTE: All drawings and steel lists referred to below are from Metropolitan Water Dist. but will be available to the contractor from the Sanitation District office, 2020 Beverly Blvd. L.A. (Drawings M.W.D. B-7134, B-7137, E-2252)



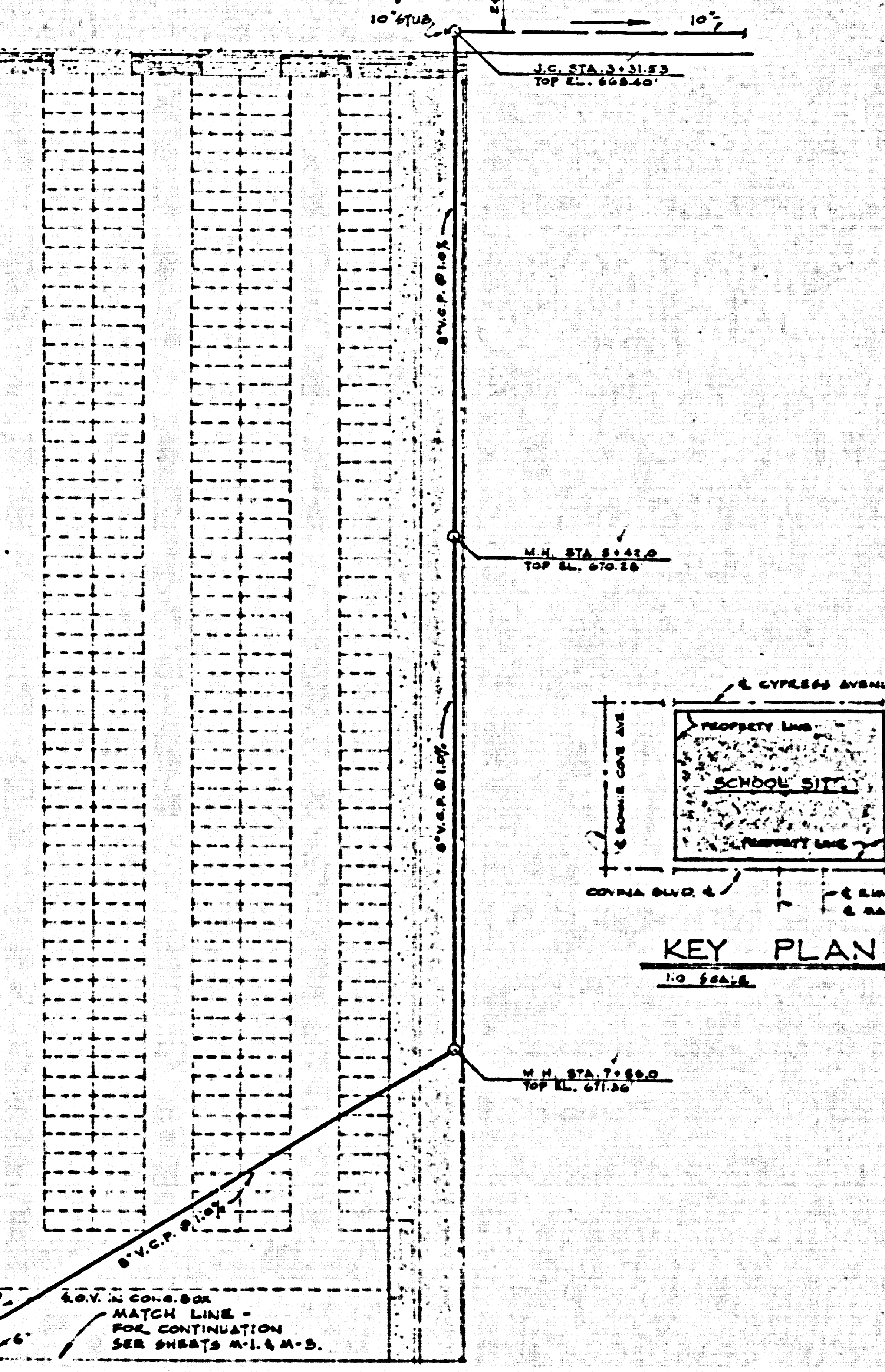
NOTE:
Interior Manhole Cast Iron Frame & Covers can be ordered through Alhambra Foundry Co. Telephone AT 4411, 3-4294 order by Metro Water Dist Drawing No E-2252

L. A. COUNTY ENGINEER, SANITATION DIVISION

P.C. 4478
C7



SEWER PROFILE
SCALE 1 HORIZONTAL : 1" = 40'-0"
VERTICAL : 1" = 4'-0"

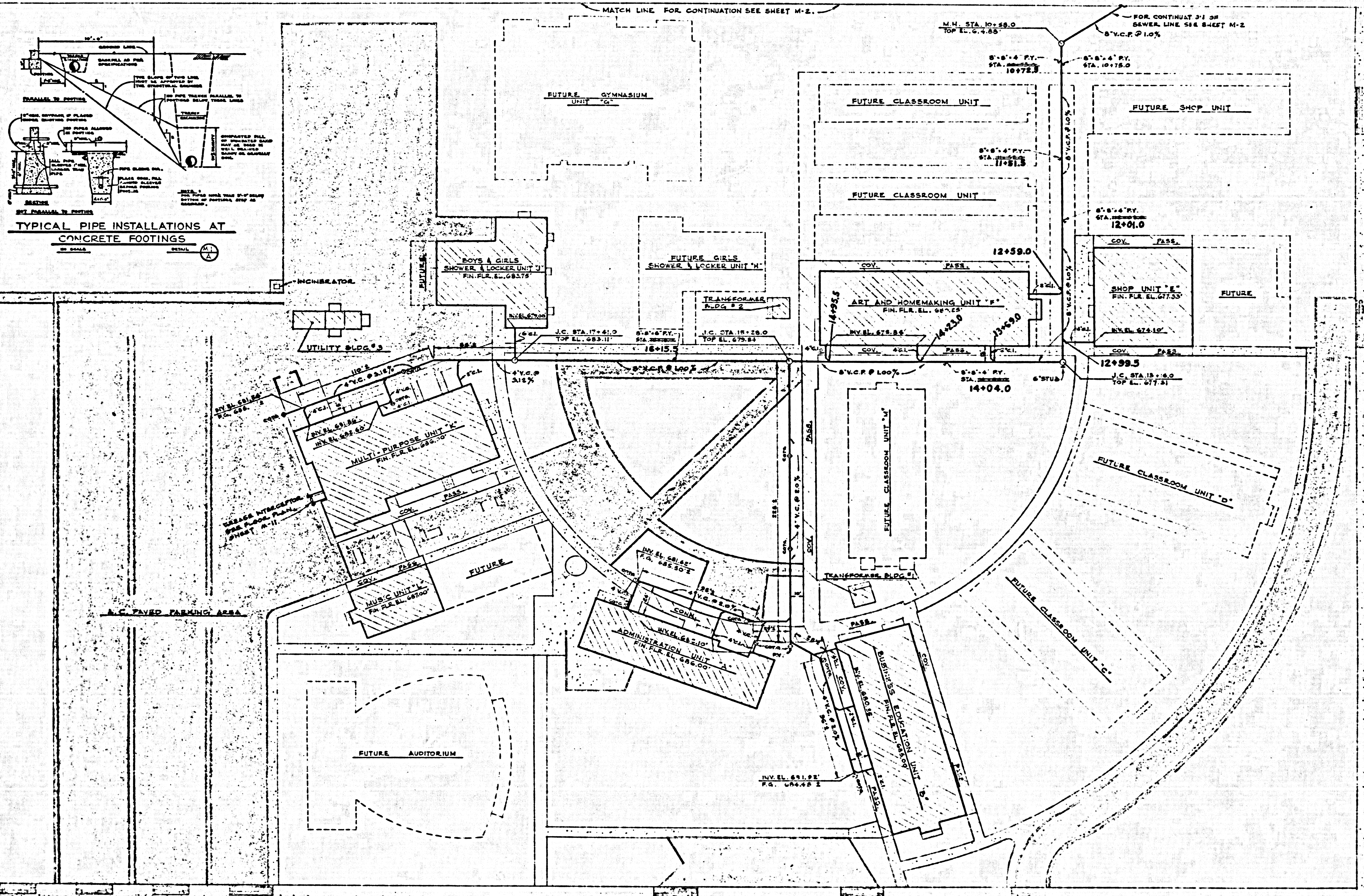


SEWER AND WATER PLOT PLAN
SCALE : 1" = 40'-0"

NOTE 1
FOR PLUMBING NOTES, SYMBOLS AND ABBREVIATIONS SEE SHEET M-1.

| | | | | | | | | |
|---|--|---|---|--|--|--|--|--|
| <p>ARCHITECT</p> <p>STRUCTURAL ENGINEER</p> | | <p><i>Arthur D. Wright</i> MECHANICAL ENGINEER</p> <p>ELECTRICAL ENGINEER</p> <p>CIVIL ENGINEER</p> | <p>KISTNER, WRIGHT & WRIGHT ARTHUR J. RENDON & LEWIS K OSBORN, ASSOCIATES ARCHITECTURE - ENGINEERING LOS ANGELES, CALIFORNIA</p> | | <p>CONTRACTOR TO VERIFY ALL DIMENSIONS AT THE JOB</p> <p>SEWER AND WATER PLOT PLAN CHARTER OAK HIGH SCHOOL COVINA UNION HIGH SCHOOL DISTRICT COVINA CALIFORNIA</p> | | <p>DATE: SEPT. '54</p> <p>BY: C. R. L. H. B.</p> <p>CHECKED BY: [Signature]</p> <p>56-43</p> | <p>SHEET NO.</p> <p>M2</p> <p>OF SHEETS</p> |
|---|--|---|---|--|--|--|--|--|

25,589



PLUMBING SYMBOLS & ABBREVIATIONS

| | | | |
|--------|-------------------|--------|-------------------|
| W | WATER | W | WATER |
| SW | SOIL WASTE | SW | SOIL WASTE |
| SD | STORM DRAIN | SD | STORM DRAIN |
| CV | COLD WATER | CV | COLD WATER |
| HW | HOT WATER | HW | HOT WATER |
| Y | VENT | Y | VENT |
| FL | FLOOR | FL | FLOOR |
| CE | Ceiling | CE | Ceiling |
| W.C.P. | Water Closet Pipe | W.C.P. | Water Closet Pipe |
| ... | ... | ... | ... |

BENCH MARK No. S.G. 80A
 TRIANGULATION B.M. IN CORNER POST 139'
 EAST OF E. OF BONNIE COVE AVENUE
 2.20' NORTH OF E. OF COVINA BOULEVARD
 ELEVATION = 710.668 1955 ADJ.

SOIL UNITS

| | |
|--------------|-------------|
| PROPOSED | 840 |
| FUTURE | 236 |
| TOTAL | 1076 |

- PLUMBING NOTES :**
1. ALL SEWER LINE DIMENSIONS SHOWN ARE APPROXIMATE LOCATIONS AND LENGTHS.
 2. ALL STANDARD MANHOLES AND COVERS SHALL BE CONSTRUCTED IN ACCORDANCE WITH THE LOS ANGELES COUNTY ORDINANCE NO. 548, STANDARD NO. SA-104 AND NO. SA-117.
 3. LOOSE KEY STOPS SHALL BE A PLATION TYPE FOR ALL HOSE BIPS AND GARDEN HOSE VALVES INDICATED WITH LOOSE KEY STOPS.
 4. ALL SHUT OFF VALVES OUTSIDE OF ONE BUILDING SHALL BE IN CONCRETE BOXES WITH THE NAME OF SERVICE COMPANY CAST IN THE COVER.
 5. HOSE BIPS AND GARDEN HOSE VALVES SHALL BE INSTALLED 18" ABOVE FINISHED GRADE, OR FINISHED GRADE UNLESS OTHERWISE INDICATED.
 6. ALL PLUG TIES SHALL BE LINE GIES, UNLESS OTHERWISE INDICATED.
 7. ALL WATER HEATERS AND WATER STORAGE TANKS SHALL BE ANCHORED TO FLOOR BY MEANS OF 2" CASH ANCHOR BOLTS 3" FROM WALL UNIT. CLIP ANGLES SHALL BE PROVIDED WHERE REQUIRED.
 8. FOR KEY PLAN SEE SHEET M-2.

P.C. 4478
 PAGE 4
 (FOR PROFILE SEE PAGE 3)

SEWER PLOT PLAN
 SCALE: 1" = 40'-0"

| | | | | | |
|----------------------------------|--|---|---|---|-------------------------------------|
| ARCHITECT STRUCTURAL ENGINEER | MECHANICAL ENGINEER ELECTRICAL ENGINEER CIVIL ENGINEER | KISTNER, WRIGHT & WRIGHT ARTHUR J. RENDON & LEWIS K OSBORN, ASSOCIATES ARCHITECTURE - ENGINEERING LOS ANGELES, CALIFORNIA | CONTRACTOR TO VERIFY ALL DIMENSIONS AT THE JOB SEWER PLOT PLAN CHARTER OAK HIGH SCHOOL COVINA UNION HIGH SCHOOL DISTRICT COVINA CALIFORNIA | DATE 7.11.45 CHECKED BY J.E. 10/10/45 | SHEET NO. M1 OF SHEETS |
|----------------------------------|--|---|---|---|-------------------------------------|