

TEMPLE CITY BLDG. DIST. NO. 5

PROFILE ALIGNMENT AND GRADE OF P.C. 4479
 SANITARY SEWERS PAGE 1

BENCH MARK:
 N^o 74 Per L.A. Co. Rd. Dept. L.Q. 573-1
 A cross cut in SE corner of walk 30' West
 of Muscatel Ave and 35' North of
 Ardendale Ave.
 ELEV. 434.365

- NOTES:
 PROVIDE STAKES ON THE PROPERTY LINE OR PROPERTY LINES PRODUCED AT RIGHT ANGLES TO THE SEWER LINE AT THE CENTER LINE OF EACH MANHOLE.
 NO REPRESENTATIVE OF THE COUNTY ENGINEER WILL SURVEY OR LAY OUT ANY PORTION OF THE WORK.
 THE OWNER OR HIS AUTHORIZED REPRESENTATIVE SHALL FURNISH THE COUNTY ENGINEER WITH GRAB SHEETS AND STATION FOR ALL HOUSE LATERALS AND Y BRANCHES AND SHALL PROVIDE STAKES FOR THEM AT THEIR PROPER LOCATIONS WITH STATIONING AND PLAINLY MARKED. ANY CHANGE IN LOCATION SHALL BE INDICATED IN WRITING BY THE OWNER OR HIS REPRESENTATIVE.
 NO REVISIONS SHALL BE MADE IN THESE PLANS WITHOUT THE APPROVAL OF THE COUNTY ENGINEER.
- USE STANDARD MANHOLE FRAMES AND COVERS, S-A-117, EXCEPT AS NOTED.
 - USE STANDARD 8" BRICK PIPE EXCEPT AS NOTED.
 - USE CEMENT MORTAR FOR ALL VITRIFIED CLAY PIPE JOINTS.
 - RESURFACE ALL TRENCH WITHIN PAVED AREA TO MEET L. A. COUNTY ROAD DEPT., OR CALIF. STATE HIGHWAY DEPT. REQUIREMENTS IN ACCORDANCE WITH PERMITS.
 - ENCASE FOUR FEET OF SEWER AT POINTS OF INTERFERENCE WITH POLES, WIRE, OR GAS LINES, 5'-A-17E.
 - HOUSE LATERALS TO BE CONSTRUCTED WITH INVERTS AT EASEMENT LINE 6" FEET BELOW CURB GRACE EXCEPT AS NOTED.
 - ALL STRUCTURES SHALL BE BRICK SEWER STRUCTURES, S-A-104, EXCEPT AS NOTED.
 - FOR ALLOWABLE LEAKAGE TEST USE FORMULA NO. 1 OF SPEC. SEC. 94.
 - MANHOLES TO BE UNIMPROVED UNLESS OTHERWISE NOTED.
 - The Private Engineer is to Furnish The Home Lateral Depth At The Property Line Below The Top Of Curb Elevation For Each House Lateral On The Grade Sheet.

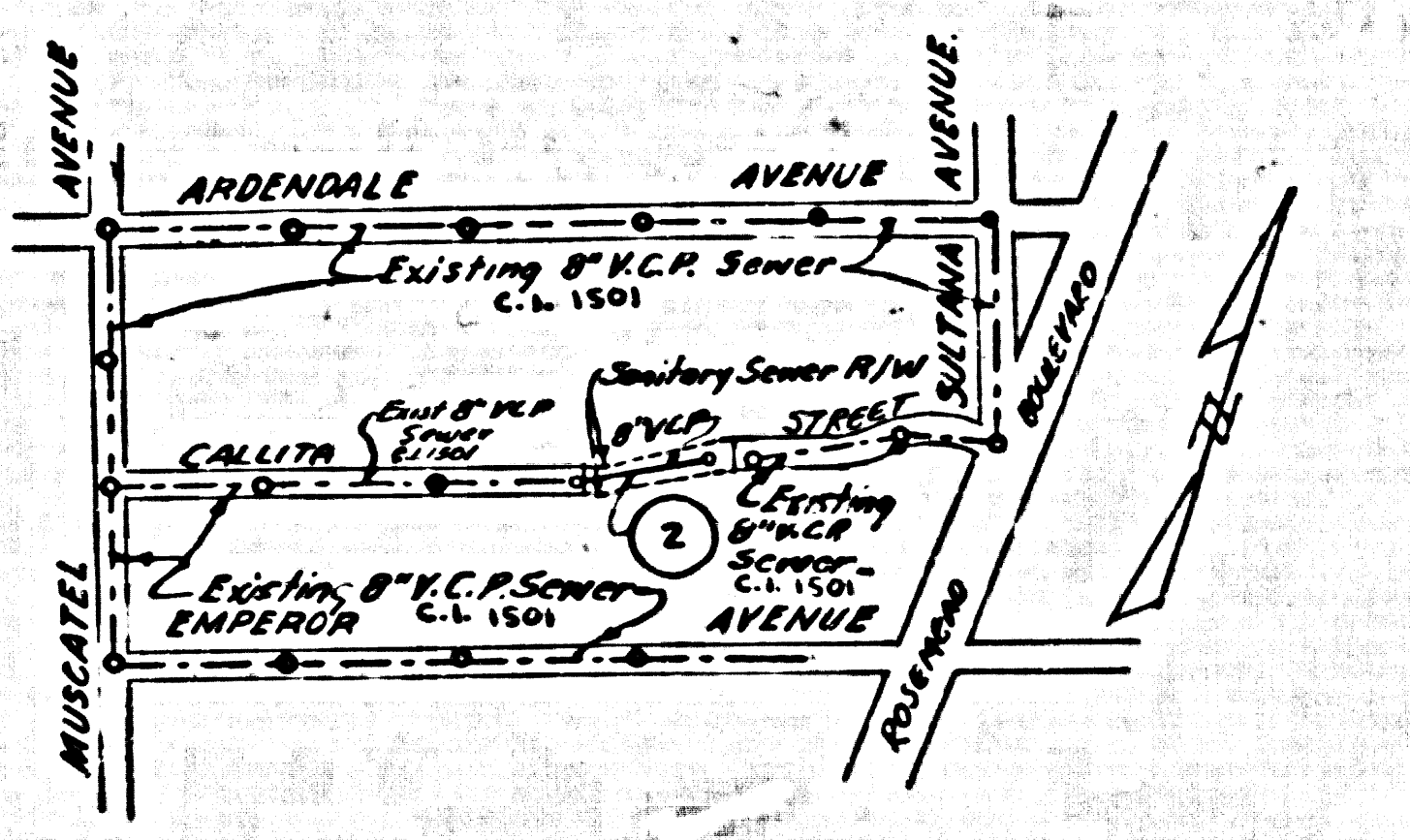
TO BE CONSTRUCTED IN
CALLITA STREET
 SANITARY SEWER RIGHT OF WAY
 To Be Located At CALLITA STREET
 PRIVATE CONTRACT NO. 4479

W.S. 44.
 1 SHEET 2 PAGES

SCALE: HORIZ. 1" = 50' VERT. 1" = 4'
 DATE: JUNE, 1957
 PREPARED IN THE OFFICES OF
KARL F. TUTTLE ENGR. CO. INC.

By John A. Tuttle
 REG. C. E. NO. 6638
 FOR LEGEND SEE PLAN NO. S-A-64

25,183



INDEX MAP
 SCALE: 1" = 500'
 P.C. 4479

NOTE: THE CONTRACTOR SHALL NOTIFY THE CONSTRUCTION AND STORM DRAIN DIVISION BY TELEPHONE, MADISON 3-4747, EXTENSION 352, AT LEAST 24 HOURS BEFORE STARTING ANY WORK UNDER THIS CONTRACT.

NO CHARGE FOR CONNECTIONS
 Estimated 8-30-57

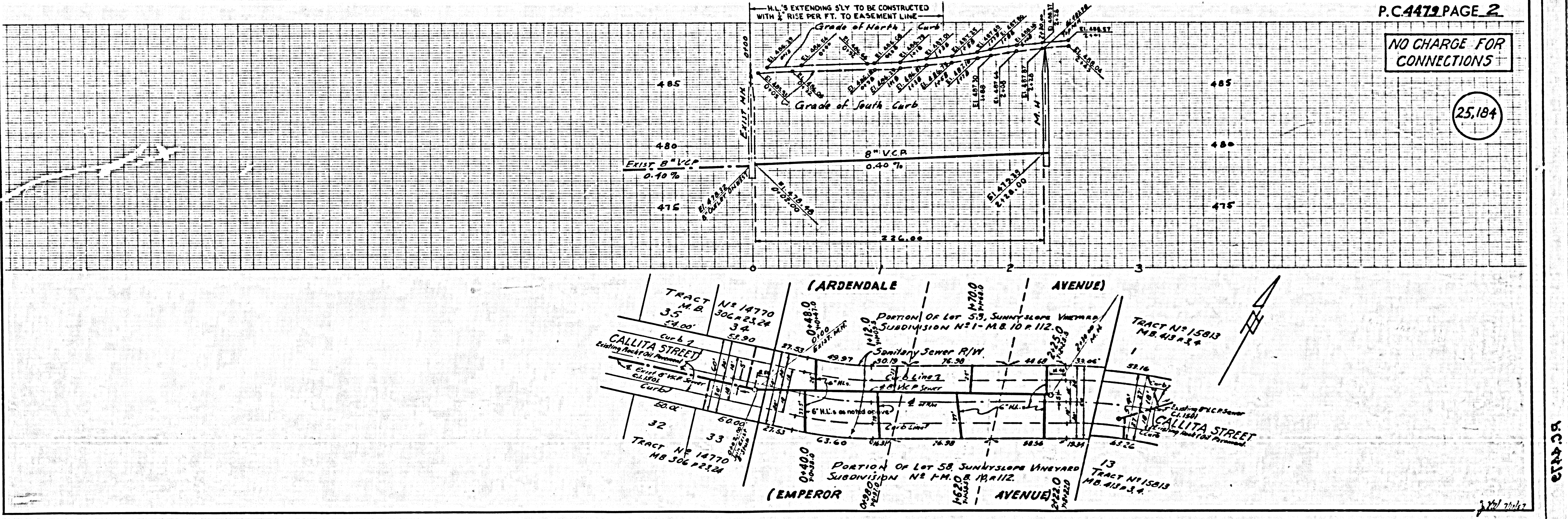
NOTES:
 GRADES TO WHICH THIS IMPROVEMENT IS TO BE CONSTRUCTED ARE SHOWN ON PLANS AND PROFILE. GRADE POINTS FOR TOP OF CURB, CENTER LINE OF STALLETS, OR CENTER LINE OF ALLEYS ARE SHOWN BY CIRCLES ON PROFILES AT ALL POINTS BETWEEN DESIGNATED POINTS THE GRADE SHALL BE ESTABLISHED SO AS TO CONFORM TO A STEADY SLOPE SHOWN BETWEEN SAID DESIGNATED POINTS.
 ELEVATIONS ARE IN FEET ABOVE MEANS SEA LEVEL DATUM OF 1929.
 THIS DRAWING AND THE DATA HEREON ARE HEREBY MADE A PART OF THE SPECIFICATIONS.
 WORK SHALL BE CONSTRUCTED ACCORDING TO SPECIFICATIONS ON FILE IN THE OFFICE OF THE COUNTY ENGINEER AND SHALL BE PROSECUTED ONLY IN THE PRESENCE OF THE COUNTY ENGINEER.
 BEFORE WORK CAN BE STARTED, THE CONTRACTOR MUST OBTAIN A PERMIT TO EXCAVATE FROM THE COUNTY ENGINEER FROM THE L. A. COUNTY ROAD DEPT., THE W. 3RD ST. AND BUREAU OF PUBLIC WORKS WITH THE COUNTY ENGINEER, ROOM 314 SAN ANTONIO BUILDING, 312 SO. BRADSHAW AVENUE TO COVER THE COST OF CONSTRUCTION INSPECTION AND RECORD PLANS.
 APPROVAL OF THIS PLAN BY THE COUNTY OF LOS ANGELES DOES NOT CONSTITUTE A REPRESENTATION AS TO THE ACCURACY OF THE LOCATION OF OR THE EXISTENCE OR NON-EXISTENCE OF ANY UNDERGROUND UTILITY PIPE, OR STRUCTURE WITHIN THE LIMITS OF THE PROJECT. THIS NOTE APPLIES TO ALL PAGES.
 IF WORK IS TO BE DONE IN A STATE HIGHWAY, A PERMIT MUST BE OBTAINED FROM THE STATE OF CALIFORNIA, DIVISION OF HIGHWAYS, 128 SOUTH SPRING STREET.

COUNTY OF LOS ANGELES, CALIFORNIA
 APPROVED, JOHN A. LAMBE, COUNTY ENGINEER
 APPROVED, A. H. BAWN, CHIEF ENGINEER
 BY Carl D. Dushoff SANITATION ENGINEER
 BY John A. Tuttle OFFICE ENGINEER
 CHECKED BY Eric W. Duda
 OFFICE OF COUNTY ENGINEER, REG. C. E. NO. 3446

P.C. 4479 PAGE 2

NO CHARGE FOR CONNECTIONS

25,184



BC 4719