

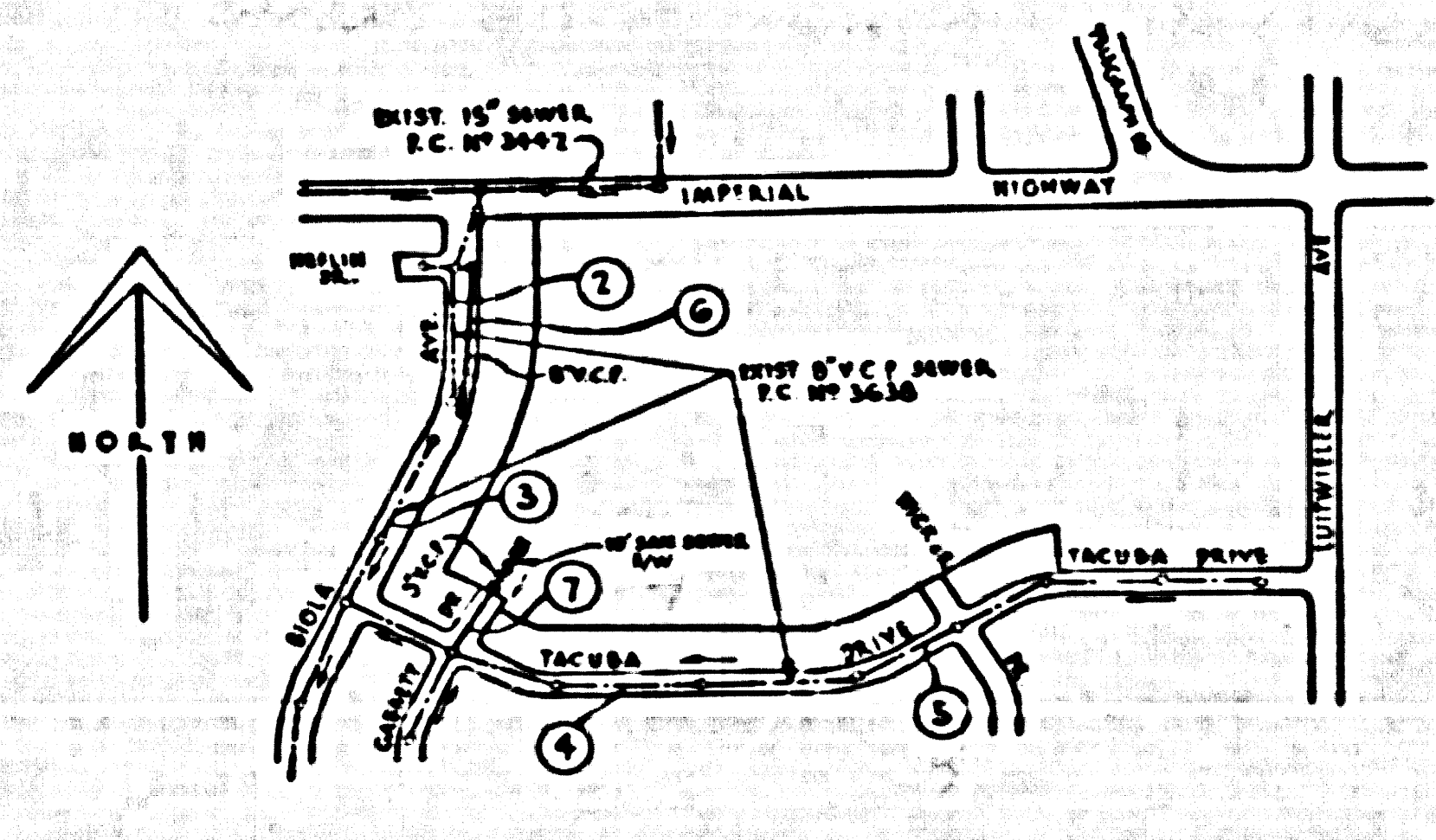
B.M. 574042 - ELEVATION 171.836 - L.A. CO. ROAD DEPARTMENT MONUMENT  
 IN MAG. PART. 6' EAST OF LUITWILLER AVE. 18' 2" WEST OF TEL POLE  
 # W56517 1736' 2" SOUTH OF & IMPERIAL HIGHWAY IN CASING WITH  
 COVER.

NO CHARGE  
 FOR CONNECTIONS  
*See Section 9-6-57*

3,471' ML  
 This Job  
 3-20-58

NORWALK BLDG. DIST. NO. 4.2

- NOTES**
- PROVIDE STAKES ON THE PROPERTY LINE OR PROPERTY LINES PRODUCED AT RIGHT ANGLES TO THE SEWER LINE AT THE CENTER LINE OF EACH MANHOLE.
- NO REPRESENTATIVE OF THE COUNTY ENGINEER WILL SURVEY OR LAYOUT ANY PORTION OF THE WORK.
- THE OWNER OR HIS AUTHORIZED REPRESENTATIVE SHALL FURNISH THE COUNTY ENGINEER WITH GRAB SHEETS AND STATION FOR ALL HOUSE LATERALS AND T BRANCHES AND SHALL PROVIDE STAKES FOR THEM AT THEIR PROPER LOCATIONS WITH STATIONING PLAINLY MARKED. ANY CHANGE IN LOCATION SHALL BE REQUESTED IN WRITING BY THE OWNER OR HIS REPRESENTATIVE.
- NO REVISIONS SHALL BE MADE IN THESE PLANS WITHOUT THE APPROVAL OF THE COUNTY ENGINEER.
1. USE STANDARD MANHOLE FRAMES AND COVERS, S-A-117, EXCEPT AS NOTED.
  2. USE STANDARD STRENGTH PIPE EXCEPT AS NOTED.
  3. USE CHAMFER MORTAR FOR ALL VITRIFIED CLAY PIPE JOINTS.
  4. RESURFACE ALL TRENCH WITHIN PAVED AREA TO MEET L. A. COUNTY ROAD DEPT., OR CALIF. STATE HIGHWAY DEPT. REQUIREMENTS IN ACCORDANCE WITH PERMITS.
  5. SHOW CASE FOUR FEET OF SEWER AT POINTS OF INTERFERENCE WITH POLES, S-A-119.
  6. HOUSE LATERALS TO BE CONSTRUCTED WITH INVERTS AT PROPERTY LINE. THEY SHALL BE BUILT WITH CHAMFER MORTAR EXCEPT AS NOTED.
  7. ALL STRUCTURES SHALL BE BUILT WITH STRUCTURAL S-A-104, EXCEPT AS NOTED.
  8. FOR ALLOWABLE LEAKAGE TEST USE FORMULA NO. 1, SPEC'LS. SEC. 11.
  9. MANHOLE TRENCHES IN UNIMPROVED HIGHWAY OR WAY TO BE 6" ABOVE FINISHED GRADE.
  10. THE PRIVATE ENGINEER IS TO FURNISH THE HOUSE LATERAL DEPTH AT THE PROPERTY LINE BELOW THE TOP OF CURB ELEVATION FOR EACH HOUSE LATERAL, ON THE GRADE SHEET.
  11. THE CONTRACTOR SHALL NOTIFY THE CONSTRUCTION AND STORM DRAIN DIVISION BY TELEPHONE - MAPSON 5-4747 EXT. 362 AT LEAST 24 HOURS BEFORE STARTING ANY WORK UNDER THIS CONTRACT.



INDEX MAP  
 SCALE: 1" = 600'  
 P. C. NO. 4484

PROFILE ALIGNMENT AND GRADE OF **P.C. 4484**  
**SANITARY SEWERS** PAGE **1**  
 TO BE CONSTRUCTED IN  
**TRACT No 24042** (25,738)

PRIVATE CONTRACT NO. 4484  
 W.S. 34

9 SHEETS, 7 PAGES  
 SCALE: VERT. 1" = 5' HORIZ. 1" = 40' JUNE, 1957

PREPARED IN THE OFFICES OF  
**LEONARD H. GOWDY**  
*Leonard H. Gowdy*  
 REG. C. E. NO. 9423

FOR LEGEND SEE PLAN NO. S-A-64

**NOTES**

GRABETS TO WHICH THIS IMPROVEMENT IS TO BE CONSTRUCTED ARE SHOWN ON PLANS AND PROFILES. GRADE POINTS FOR TOP OF CURB, CENTER LINE OF STREETS, OR CENTER LINE OF ALLEYS ARE SHOWN BY CIRCLES OR SQUARES. AT ALL POINTS BETWEEN DESIGNATED POINTS THE GRADE SHALL BE ESTABLISHED SO AS TO CONFORM TO A STRAIGHT LINE DRAWN BETWEEN SAID DESIGNATED POINTS.

ELEVATIONS ARE IN FEET ABOVE U.S.C. & G.S. MEAN SEVERAL FEET OF 1929.

THIS DRAWING AND THE DATA HEREON ARE HEREBY MADE A PART OF THE SPECIFICATIONS.

WORK SHALL BE CONSTRUCTED ACCORDING TO SPECIFICATIONS ON FILE IN THE OFFICE OF THE COUNTY ENGINEER AND SHALL BE PROSECUTED ONLY IN THE PRESENCE OF THE COUNTY ENGINEER.

BEFORE WORK CAN BE STARTED, THE CONTRACTOR MUST OBTAIN A PERMIT TO EXCAVATE IN COUNTY STREETS FROM THE L. A. COUNTY ROAD DEPT., 100 W. 2ND ST. AND MAKE A DEPOSIT WITH THE COUNTY ENGINEER, ROOM 124 PAM AMERICAN BLDG., 210 S. 2ND ST. BROADWAY SUFFICIENT TO COVER THE COST OF CONSTRUCTION INSPECTION AND RECORD PLANS.

APPROVAL OF THIS PLAN BY THE COUNTY OF LOS ANGELES DOES NOT CONSTITUTE A REPRESENTATION AS TO THE ACCURACY OF THE LOCATION OF OR THE EXISTENCE OR NON-EXISTENCE OF ANY UNDERGROUND UTILITY PIPE, OR STRUCTURE WITHIN THE LIMITS OF THE PROJECT. THIS NOTE APPLIES TO ALL PAGES.

IF WORK IS TO BE DONE IN A STATE HIGHWAY, A PERMIT MUST BE OBTAINED FROM THE STATE OF CALIFORNIA, DIVISION OF HIGHWAYS, 126 SOUTH BRIDGE STREET.

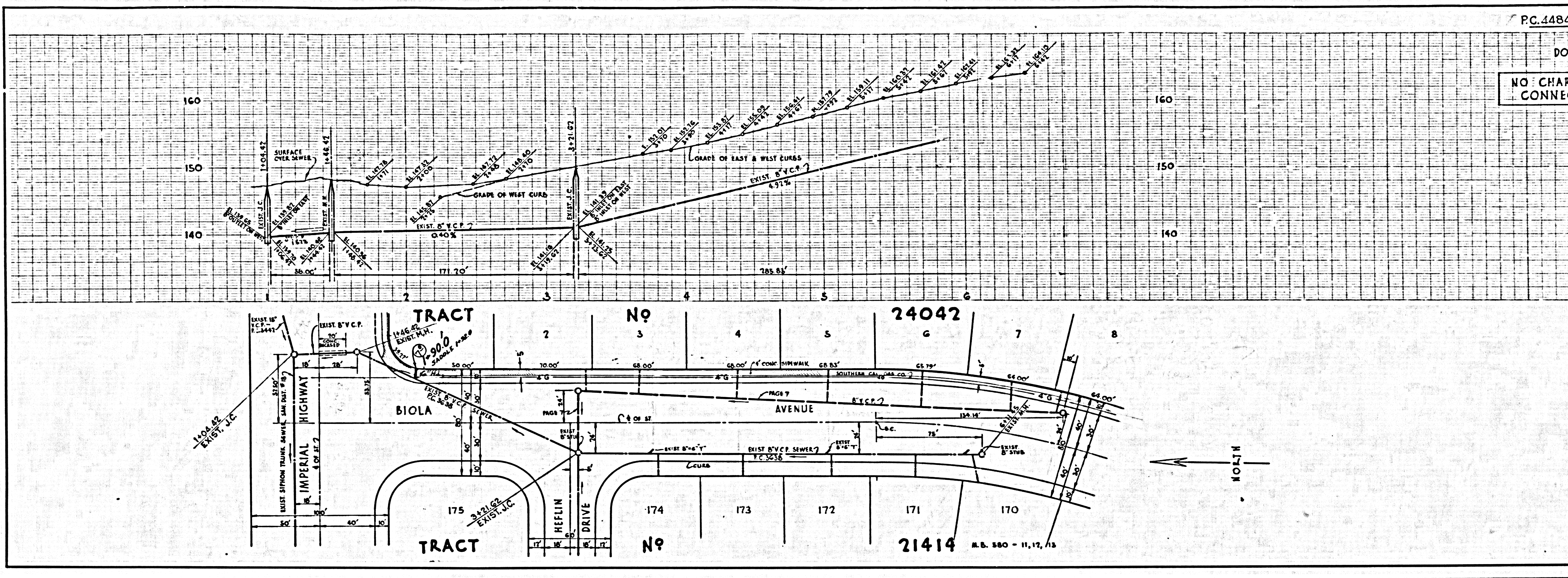
COUNTY OF LOS ANGELES, CALIFORNIA

APPROVED, JOHN A. LAMBE, COUNTY ENGINEER  
 APPROVED, A. M. BAWN, CHIEF ENGINEER  
 BY *J. A. Lambe* BY *A. M. Bawn*  
 SANITATION DIVISION OFFICE ENGINEER  
 CHECKED BY *S. K. Onda 9-6-57*  
 OFFICE OF COUNTY ENGINEER, S.P.S. & NO. 3466

DOUBLE SCALE

NO CHARGE FOR CONNECTIONS

25739

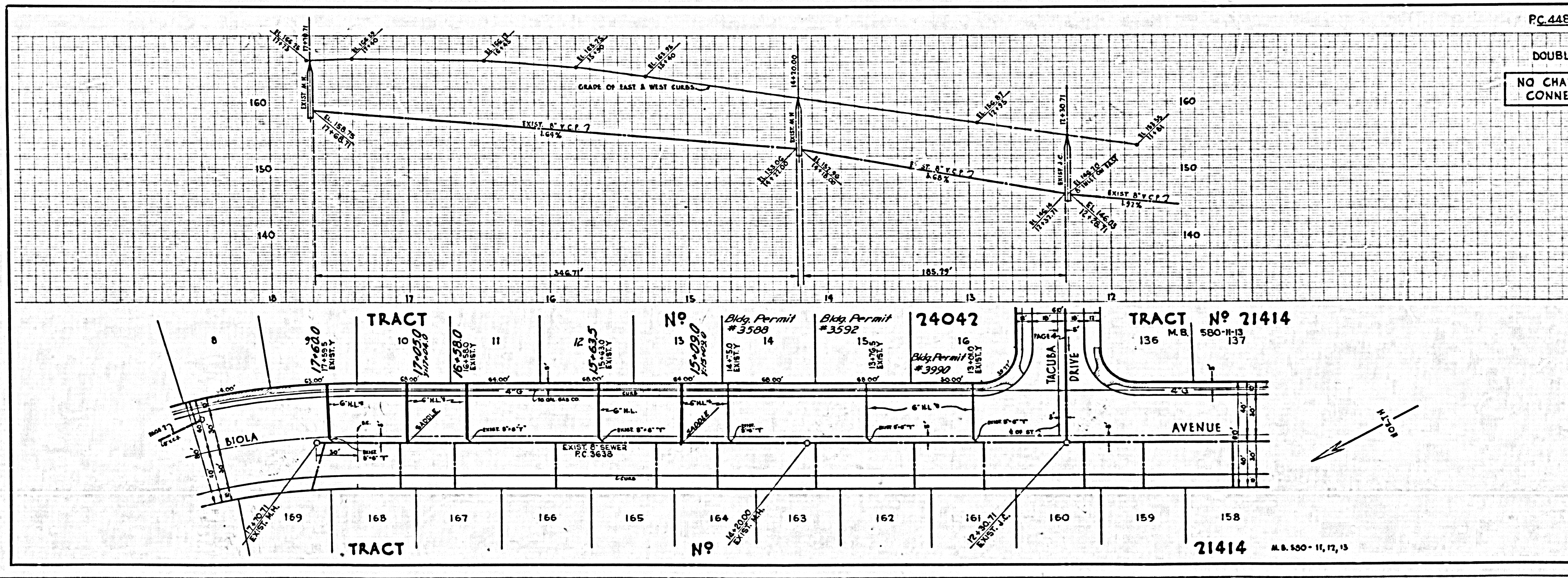


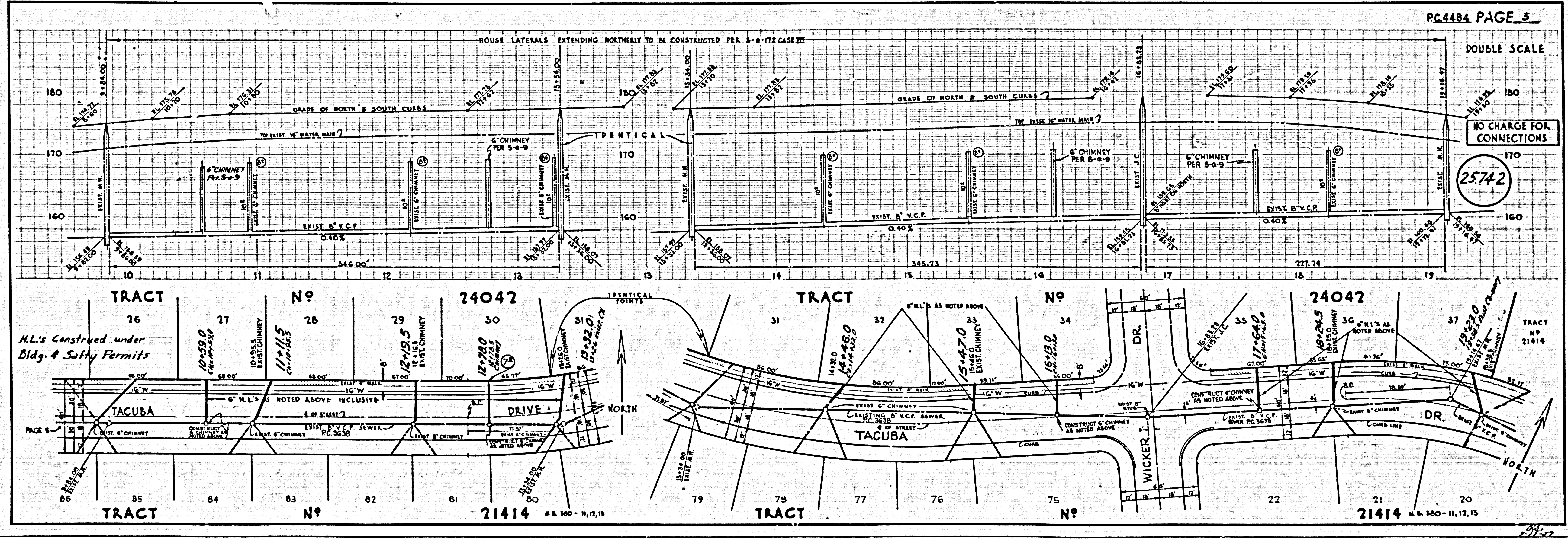
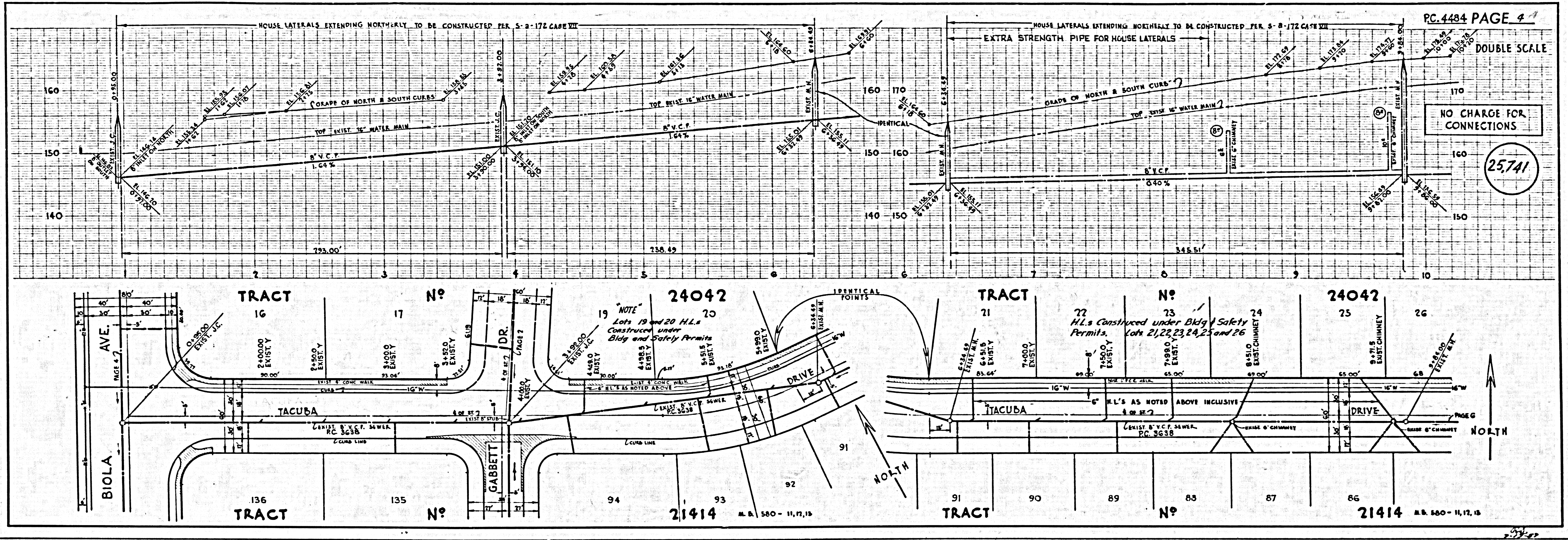
Handwritten notes: 1704, 1704, 1704, 1704, 1704

DOUBLE SCALE

NO CHARGE FOR CONNECTIONS

25740



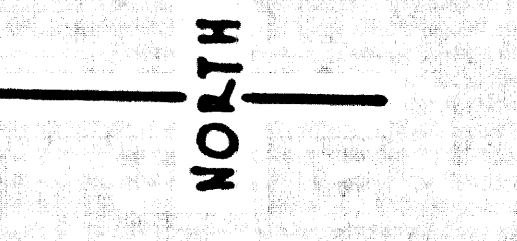
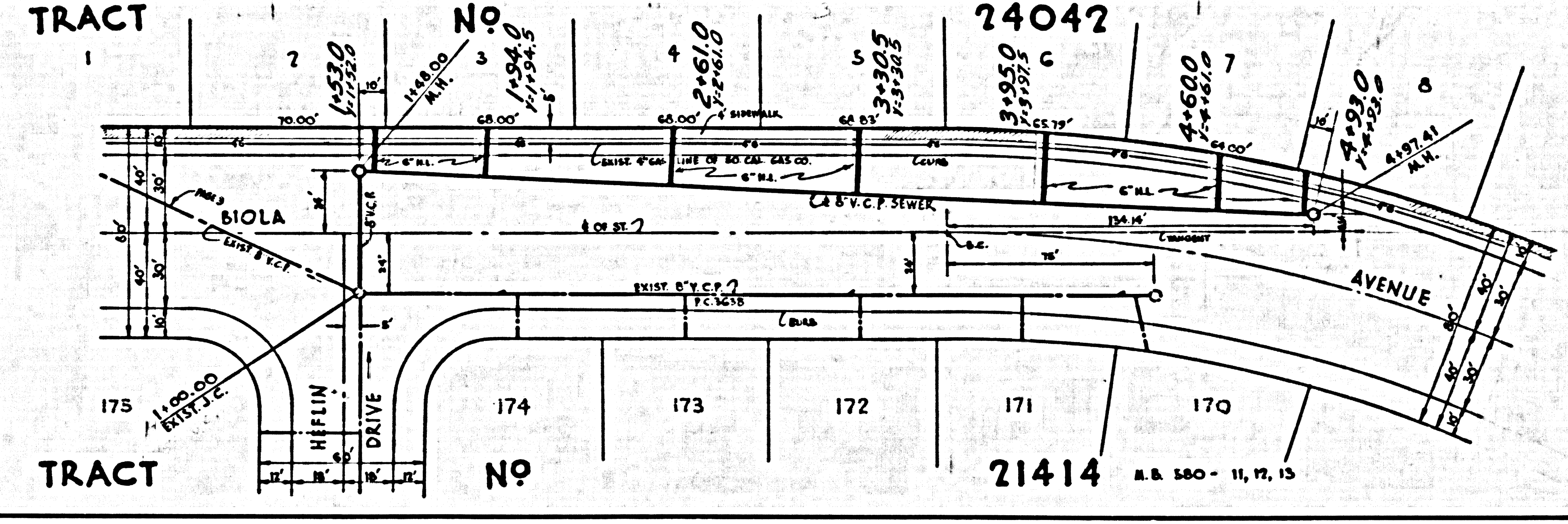
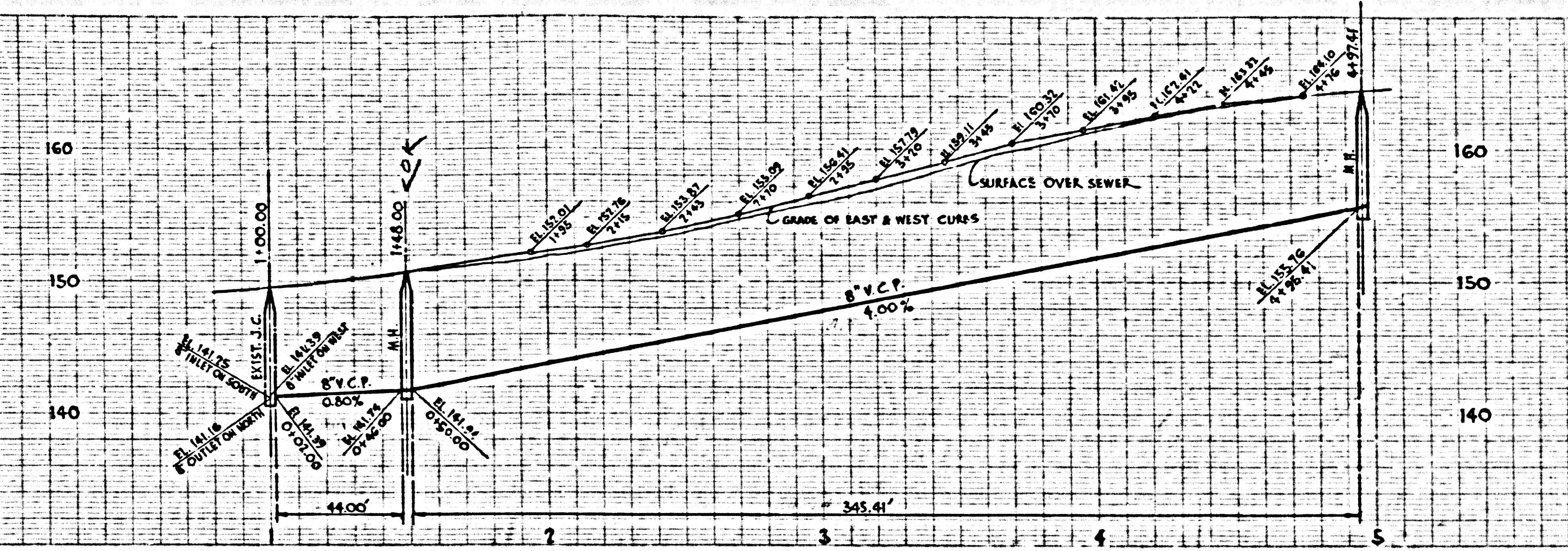


U.S.G.P. PLAN, SCALE 1"=40'

DOUBLE SCALE

NO CHARGE FOR CONNECTIONS

25743



DOUBLE SCALE

NO CHARGE FOR CONNECTIONS

25744

