

BENCH MARK
 BMP-144 Elev 185.916 F.B. 1236 PAGE 15.
 DURFEE AVE & L.A.S.L.R.R. S.E. CORNER LOT
 IN N.W. CORNER CONC. FOUNDATION OF PICO
 R.R. STATION.

WHITTIER BLDG. DIST. NO. 11

PROFILE ALIGNMENT AND GRADE OF **P.C. 4486**
SANITARY SEWERS PAGE **1**
 TO BE CONSTRUCTED IN

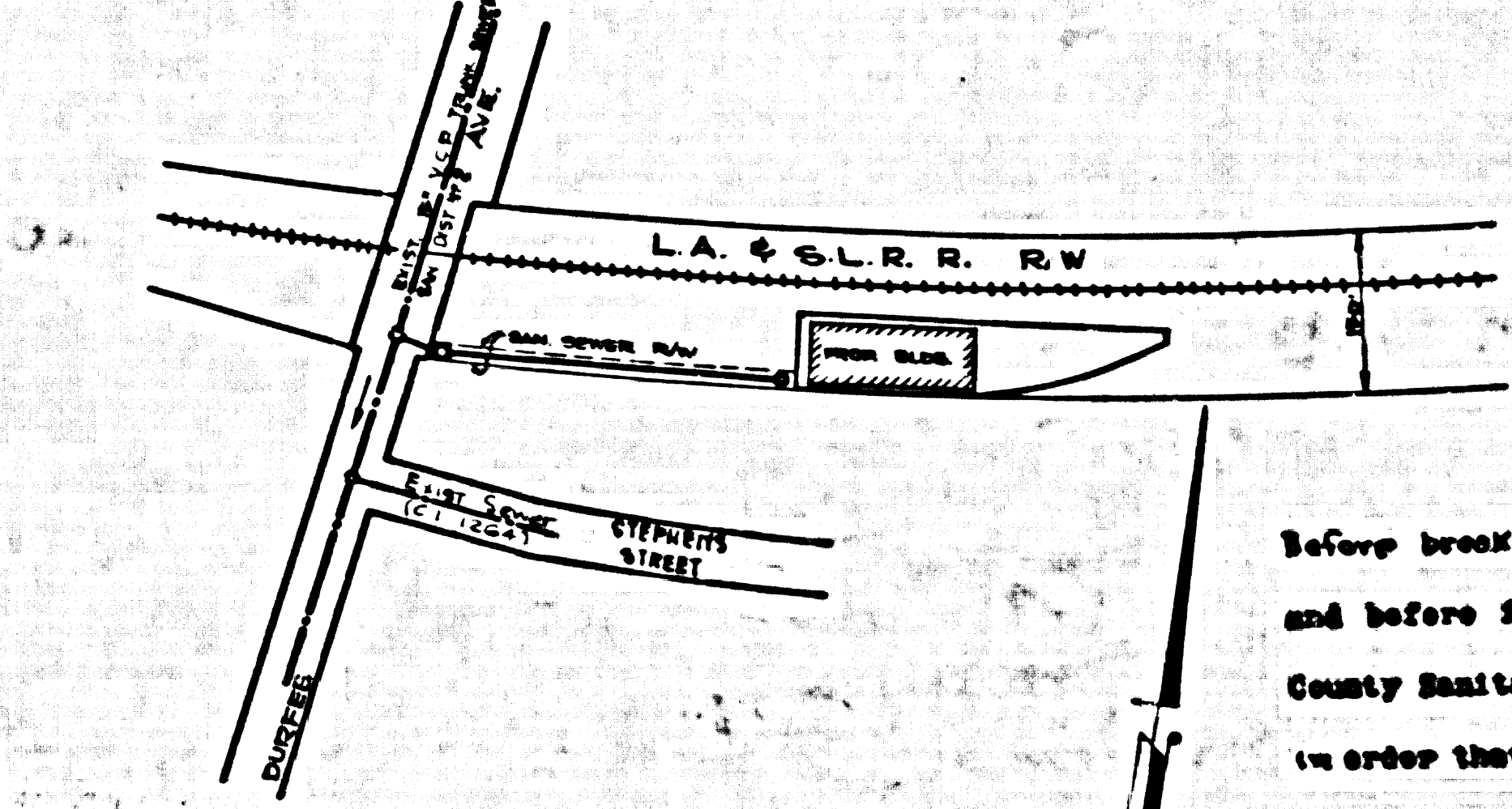
**A SANITARY SEWER RIGHT OF WAY
 EAST OF DURFEE AVENUE
 PRIVATE CONTRACT NO. 4486**

W.S. 37
 1 SHEET, 2 PAGES
 SCALE: VERT. 1" = 4'
 HORIZ. 1" = 40'
 JULY, 1957
 PREPARED BY THE OFFICES OF
LEWIS M. NERENBAUM
 REG. C. E. NO. 5976
 FOR LEGEND SEE PLAN NO. S-A-64

25,465

- NOTES:**
- PROVIDE STAKES ON THE PROPERTY LINE OR PROPERTY LUMP PRODUCED AT 90° ANGLES TO THE SEWER LINE AT THE CENTER LINE OF EACH MANHOLE.
 - NO REPRESENTATIVE OF THE COUNTY ENGINEER WILL SURVEY OR LAYOUT ANY PORTION OF THE WORK.
 - THE OWNER OR HIS AUTHORIZED REPRESENTATIVE SHALL FURNISH THE COUNTY ENGINEER WITH GRADE SHEETS AND STATION FOR ALL HOUSE LATERALS AND Y BRANCHES AND SHALL PROVIDE STAKES FOR THEM AT THEIR PROPER LOCATIONS WITH STATIONING PLAINLY MARKED. ANY CHANGE IN LOCATION SHALL BE REQUESTED BY WRITING BY THE OWNER OR HIS REPRESENTATIVE.
 - NO REVISIONS SHALL BE MADE BY THESE PLANS WITHOUT THE APPROVAL OF THE COUNTY ENGINEER.
 - USE STANDARD MANHOLE FRAMES AND COVERS, S-A-117, EXCEPT AS NOTED.
 - USE EXTRA STRENGTH PIPE EXCEPT AS NOTED.
 - USE CEMENT MORTAR FOR ALL VITRIFIED CLAY PIPE JOINTS.
 - RESURFACE ALL TRENCH WITHIN PAVED AREA TO MEET L. A. COUNTY ROAD DEPT., OR CALIF. STATE HIGHWAY S.T. REQUIREMENTS IN ACCORDANCE WITH PERMITS.
 - ENCASE FOUR FEET OF SEWER AT POINTS OF INTERFERENCE WITH POLES, S-A-119.
 - ALL STRUCTURES SHALL BE BRICK SEWER STRUCTURES, S-A-104, EXCEPT AS NOTED.
 - FOR ALLOWABLE LEAKAGE TEST USE FORMULA NO. 1 SPCC, SEC. 54.
 - MANHOLE TOPS IN UNIMPROVED RIGHTS-OF-WAY TO BE 6" ABOVE FINISHED GRADE.
 - THE CONTRACTOR SHALL NOTIFY THE COUNTY ENGINEER & ENGINE DESIGN DIVISION BY TELEPHONE, IMMEDIATELY BY ST. 3402, AT LEAST 24 HRS. BEFORE STARTING ANY WORK UNDER THIS CONTRACT.

NOTES:
 GRADES TO WHICH THIS IMPROVEMENT IS TO BE CONSTRUCTED ARE SHOWN ON PLANS AND PROFILES. GRADE POINTS FOR TOP OF CURBS, CENTER LINE OF STREETS, OR CENTER LINE OF ALLEYS ARE SHOWN BY CIRCLES ON PROFILES. AT ALL POINTS BETWEEN DESIGNATED POINTS THE GRADE SHALL BE ESTABLISHED SO AS TO CONFORM TO A STRAIGHT LINE DRAWN BETWEEN SAID DESIGNATED POINTS.
 ELEVATIONS ARE IN FEET ABOVE U.S. MEAN SEA LEVEL. CERTAIN LINES, DISTANCES, CURVES, AND LEVELS OF DUTY OF THIS DRAWING AND THE DATA HEREON ARE HEREBY MADE A PART OF THE SPECIFICATIONS.
 WORK SHALL BE CONSTRUCTED ACCORDING TO SPECIFICATIONS ON FILE IN THE OFFICE OF THE COUNTY ENGINEER AND SHALL BE PROSECUTED ONLY IN THE PRESENCE OF THE COUNTY ENGINEER.
 BEFORE WORK CAN BE STARTED, THE CONTRACTOR MUST OBTAIN A PERMIT TO EXCAVATE IN COUNTY STREETS FROM THE L. A. COUNTY ROAD DEPT., 128 W. 3RD ST. AND MAKE A DEPOSIT WITH THE COUNTY ENGINEER, ROOM 224 SAN AMERICAN BLDG., 232 SO. BROADWAY SUFFICIENT TO COVER THE COST OF CONSTRUCTION INSPECTION AND RECORD PLANS.
 APPROVAL OF THIS PLAN BY THE COUNTY OF LOS ANGELES DOES NOT CONSTITUTE A REPRESENTATION AS TO THE ACCURACY OF THE LOCATION OF OR THE EXISTENCE OR NON-EXISTENCE OF ANY UNDERGROUND UTILITY PIPE, OR STRUCTURE WITHIN THE LIMITS OF THE PROJECT. THIS NOTE APPLIES TO ALL PAGES.
 IF WORK IS TO BE DONE IN A STATE HIGHWAY, A PERMIT MUST BE OBTAINED FROM THE STATE OF CALIFORNIA, DIVISION OF HIGHWAYS, 128 SOUTH SPRING STREET.



Before breaking into any existing structure and before final acceptance of this work, County Sanitation District should be notified in order that required inspection may be made.

NO CHARGE FOR CONNECTIONS
Ludwig 8/16/57

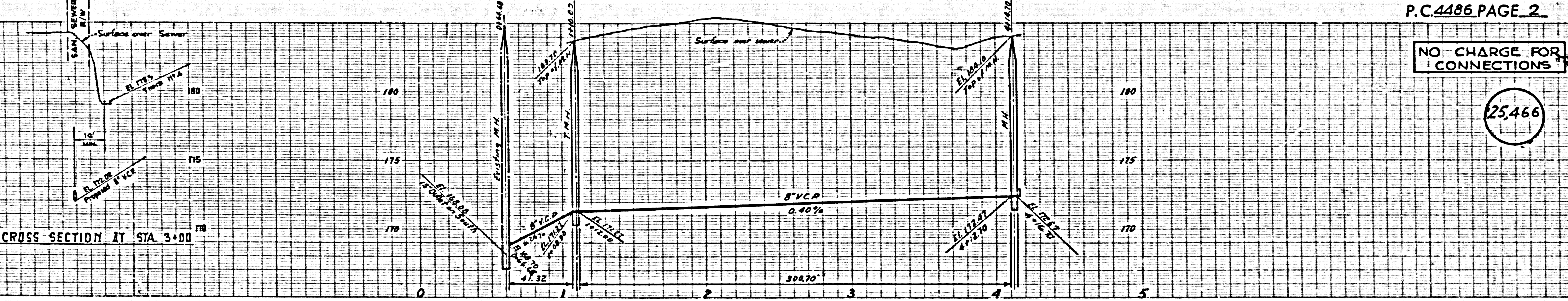
ENG.	DATE	REVISION
<i>L. M. Nerenbaum</i>	12/1/57	Relocate T.M.N. from 1400 to 1410

REVISION APPROVED
 BY *S. J. Onda 11-9-57*
 Office of County Engineer, Reg. C. E. No. 8406

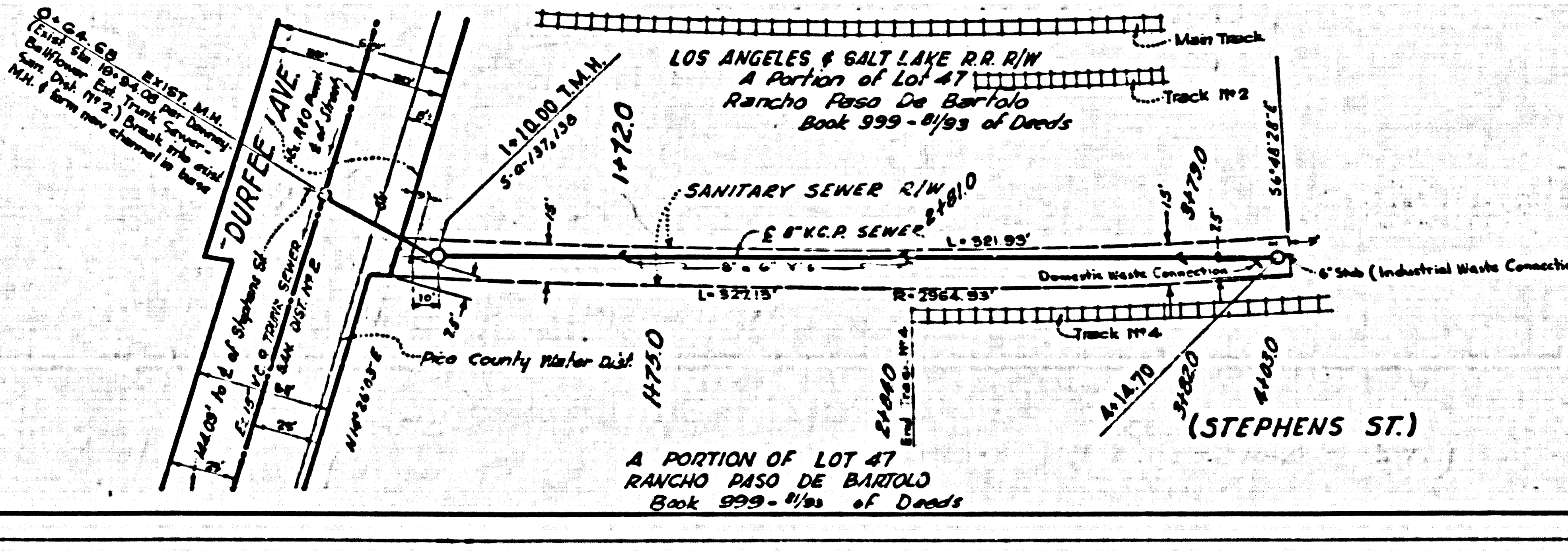
INDEX MAP
 SCALE: 1" = 200'
 P.C. 4486

APPROVED, JOHN A. LAMBE, COUNTY ENGINEER
 APPROVED, A. M. RAWN, CHIEF ENGINEER
 CO. SAN. DIST. NO. 11
 BY *L. M. Nerenbaum* OFFICE ENGINEER
 CHECKED BY *S. J. Onda 11-9-57*
 OFFICE OF COUNTY ENGINEER, REG. C. E. NO. 3402

APPROVED, INDUSTRIAL WASTE DIVISION
 BY *Carlton Rickett 8/16/57*



CROSS SECTION AT STA. 3+00



P.C. 4486 PAGE 2

NO CHARGE FOR CONNECTIONS

25,466