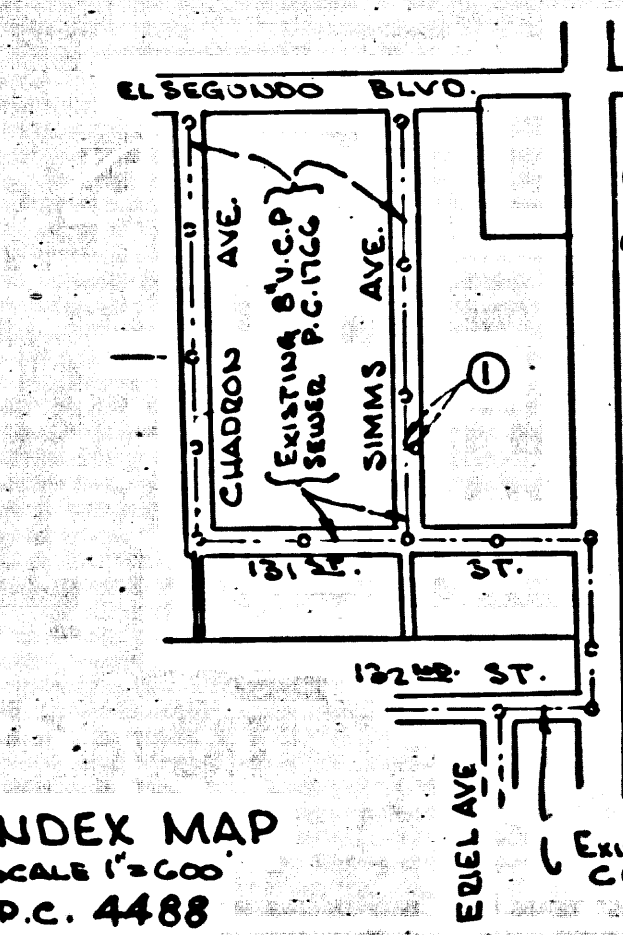


- NOTE: LENNOX BLDG DIST. NO 7**
- Provide stakes on the property lines or property lines produced at right angles to the sewer line at the center line of each manhole.
- No representative of the County Engineer will survey or layout any portion of the work.
- The owner or his authorized representative shall furnish the County Engineer with grade sheets and stations for all house laterals and Y branches and shall provide stakes for them at their proper locations with stationing plainly marked. Any change in location shall be requested in writing by the owner or his representative.
- No revisions shall be made in these plans without the approval of the County Engineer.
1. Use standard manhole frames and covers, S-a-117. EXCEPT AS NOTED
  2. Use standard strength pipe except as noted.
  3. Use cement mortar for all vitrified clay pipe joints.
  4. Resurface all trench within paved area to meet L.A. County Road Dept. or California State Highway Dept. requirements in accordance with permit.
  5. Encase four feet of sewer at points of interference with poles, S-a-119.
  6. House laterals to be constructed with 1/4" per foot rise to property line
  7. All structures shall be brick sewer structures, S-a-104. EXCEPT AS NOTED
  8. For allowable leakage test, use Formula No. 1, Spec's, Sec. 54
  9. Manhole tops in unimproved Rights-Of-Way to be 6" above finish grade.
  10. THE PRIVATE ENGINEER IS TO CURNISH THE HOUSE LATERAL DEPTH AT THE PROPERTY LINE BELOW THE ELEVATION OF CENTERLINE OF STREET FOR EACH HOUSE LATERAL ON THE GRADE SHEET.
  11. The contractor shall notify the Construction and Storm Drain Division by telephone MADISON 9-4747, Ext 362 at least 24 hours before starting any work under this contract

B.M. 51008 ELEV. 49.92  
 NEW COR. GREENHAWK BLVD. &  
 EL SEGUNDO BLVD. LEAD 2 ST.  
 NAIL E. COR. CATCH BASIN.

NO CHARGE  
 FOR CONNECTION  
 By Order 22257

INDEX MAP  
 SCALE 1"=500'  
 P.C. 4488



PROFILE, ALIGNMENT AND GRADE OF  
**SANITARY SEWERS**  
 TO BE CONSTRUCTED IN  
**SIMMS AVENUE**

P.C. 4488  
 PAGE 1

(24,887)

PRIVATE CONTRACT NO. 4488  
 W. S. 25  
 SHEET 1 of 1  
 Scale: VERT. 1"=4'  
 HORIZ. 1"=40' JUNE 1957  
 PREPARED IN THE OFFICES OF  
**NATIONAL ENGINEERING CO.**  
*Ellsworth J. Epperson*  
 Reg. C. E. No. 5826

FOR LEGEND SEE PLAN NO. S-a-64

**NOTE:**

Grades to which this improvement is to be constructed are shown on plans and profiles. Grade points for top of curbs, center line of streets, or center line of alleys are shown by circles on profiles. At all points between designated points the grade shall be established so as to conform to a straight line drawn between said designated points.

Elevations are in feet above U.S.C. & G.S. SEA LEVEL 1929

This drawing and the data hereon are hereby made a part of the specifications.

Work shall be constructed according to specifications on file in the office of the County Engineer and shall be prosecuted only in the presence of the County Engineer.

Before work can be started, the contractor must obtain a permit to excavate in County streets from the L.A. County Road Dept., 108 W. 2nd St. and make a deposit with the County Engineer, 354 FULLERTON BLVD., 215 S. HOPEWAY, sufficient to cover the cost of construction inspection and record plans.

Approval of this plan by the County of Los Angeles does not constitute a representation as to the accuracy of the location of or the existence or non-existence of any underground utility, pipe, or structure within the limits of this project. This note applies to all sheets.

If work is to be done in a State Highway, a permit must be obtained from the State of California, Division of Highways, 120 South Spring Street.

**COUNTY OF LOS ANGELES, CALIFORNIA**

Approved, James A. Luntis, County Engineer Approved, A. M. Rawn  
 CHIEF ENGR. SO. SAN DIST. NO. 5  
*M. J. Brannan* *A. M. Rawn*  
 Asst. Sanitation Engineer Office Engineer  
 Checked by *St. W. Clark* 7-22-57  
 Office of County Engineer, Reg. C. E. No. 2666

APPROVED, INDUSTRIAL WASTE DIVISION  
 By *Wayne Clark*

15-1957

884429