

BENCHMARK:

B.M.S.L. 65 - Brass Cap in Conc. Monument 25' deep on E of East Avenue J; 700' East of 1st Street East & Intersection 5th Street East and Avenue J. C. and G.S. Prelim. Adj. 1957 ELEV. 2390.317

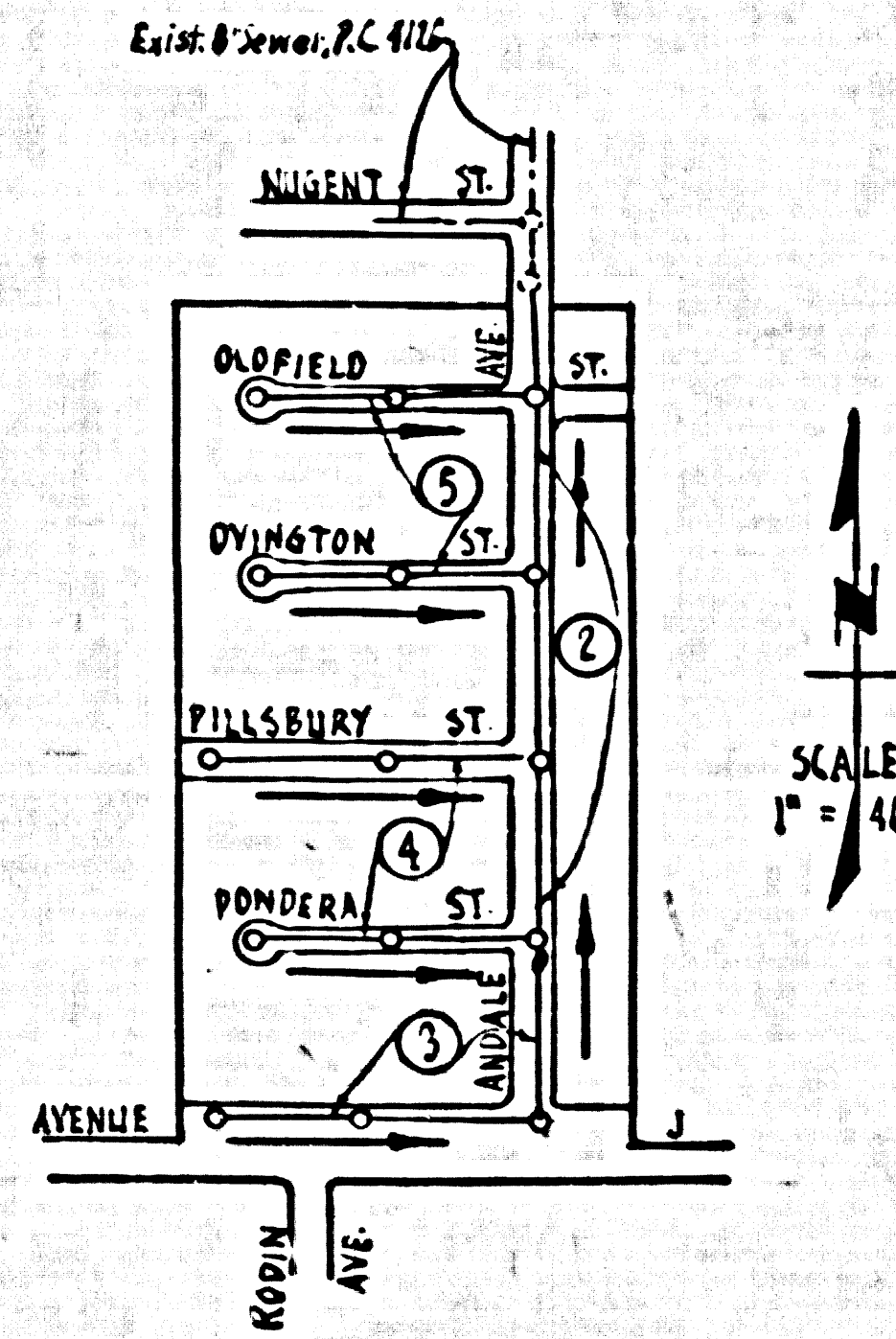
NOTE: 1956 Adj. Elev. for S.L. 65 - 2391.191

NO CHARGE FOR CONNECTIONS

Donald R. Olson

DO NOT ISSUE HOUSE SEWER PERMITS UNTIL TRACT NO 23883 HAS BEEN RECORDED.

LANCASTER BLDG. DIST. NO. 8



INDEX MAP
P.C. 4489
TRACT NO 23883

- NOTES:**
- PROVIDE STAKES ON THE PROPERTY LINE OR PROPERTY LINES PRODUCED AT RIGHT ANGLES TO THE SEWER LINE AT THE CENTER LINE OF EACH MANHOLE.
 - NO REPRESENTATIVE OF THE COUNTY ENGINEER WILL SURVEY OR LAYOUT ANY PORTION OF THE WORK.
 - THE OWNER OR HIS AUTHORIZED REPRESENTATIVE SHALL FURNISH THE COUNTY ENGINEER WITH GRADE SHEETS AND STATIONING FOR ALL HOUSE LATERALS AND V BRANCHES AND SHALL PROVIDE STAKES FOR THEM AT THEIR PROPER LOCATIONS WITH STATIONING PLAINLY MARKED. ANY CHANGE IN LOCATION SHALL BE REQUESTED IN WRITING BY THE OWNER OR HIS REPRESENTATIVE.
 - NO REVISIONS SHALL BE MADE IN THESE PLANS WITHOUT THE APPROVAL OF THE COUNTY ENGINEER.
 - USE STANDARD MANHOLE FRAMES AND COVERS, S-A-117, EXCEPT AS NOTED.
 - USE STANDARD STRENGTH PIPE EXCEPT AS NOTED.
 - USE CEMENT MORTAR FOR ALL VITRIFIED CLAY PIPE JOINTS.
 - RESURFACE ALL TRENCH WITHIN PAVED AREA TO MEET L. A. COUNTY ROAD DEPT. OR CALIF. STATE HIGHWAY DEPT. REQUIREMENTS IN ACCORDANCE WITH PERMITS.
 - ENCASE FOUR FEET OF SEWER AT POINTS OF INTERFERENCE WITH POLES, S-A-119.
 - HOUSE LATERALS TO BE CONSTRUCTED WITH INVERTS AT PROPERTY LINE $\frac{1}{2}$ FEET BELOW CURB GRADE EXCEPT AS NOTED.
 - ALL STRUCTURES SHALL BE BLOCK SEWER STRUCTURES, S-A-104, EXCEPT AS NOTED.
 - FOR ALLOWABLE LEAKAGE TEST USE FORMULA NO. 100, SPEC. SEC. 14.
 - MANHOLE TOPS IN UNIMPROVED RIGHTS-OF-WAY TO BE 6" ABOVE FINISHED GRADE.
 - THE PRIVATE ENGINEER IS TO FURNISH THE HOUSE LATERAL DEPTH AT THE PROPERTY LINE BELOW THE TOP OF CURB ELEVATION FOR EACH HOUSE LATERAL ON THE GRADE SHEET.
 - BALL ALL PIPE JOINTS THAT ARE WITHIN 20 FEET OF ANY PROPERTY LINE WITH 6" CEMENT MORTAR.
 - THE CONTRACTOR SHALL NOTIFY THE STORM DRAIN AND CONSTRUCTION DIVISION BY TELEPHONE, WH-28401, EXT 40, AT LEAST 24 HOURS BEFORE STARTING ANY WORK UNDER THIS CONTRACT.

TO BE CONSTRUCTED IN
TRACT NO 23883 (25149)

PRIVATE CONTRACT NO. 4489

W.S. 70
3 SHEETS, 5 PAGES

SCALE: $\frac{1}{4}$ " = 1' JULY, 1957

PREPARED IN THE OFFICES OF
ROSENTHAL ENGINEERING CO.

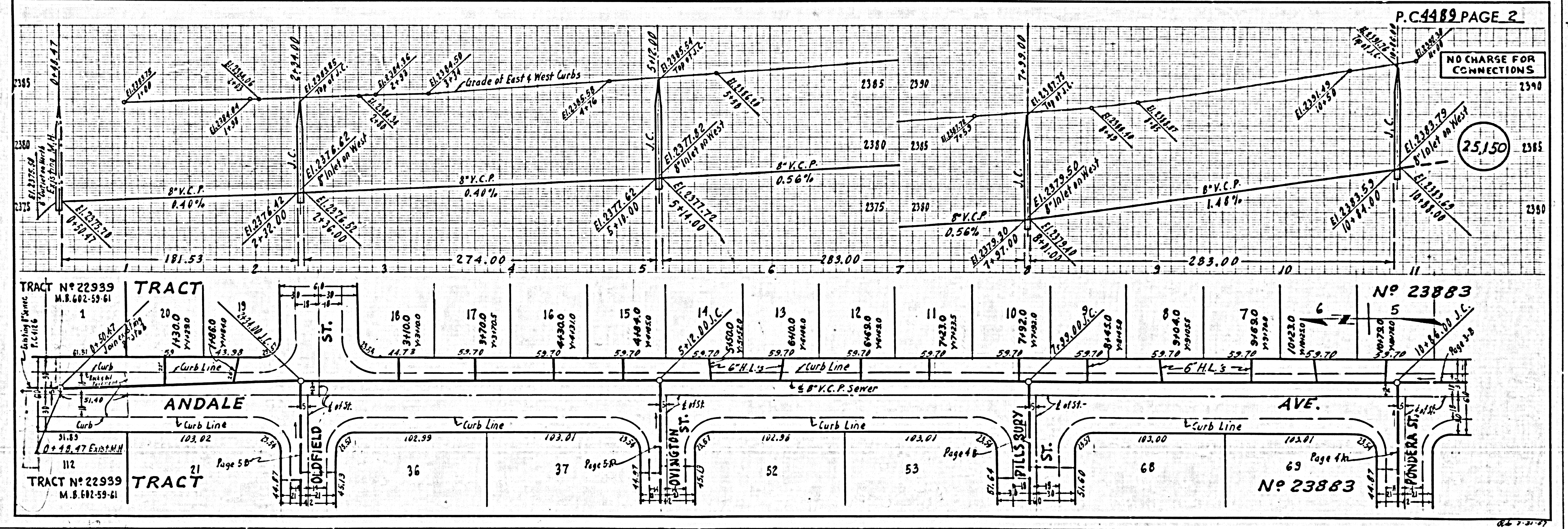
A. G. Rosenthal
REG. C. E. NO. 8185

FOR LEGEND SEE PLAN NO. S-A-64

NOTE:
GRADES TO WHICH THIS IMPROVEMENT IS TO BE CONSTRUCTED ARE SHOWN ON PLANS AND PROFILE. GRADE POINTS FOR TOP OF CURB, CENTER LINE OF STREETS, OR CENTER LINE OF ALLEYS ARE SHOWN BY CIRCLES ON PROFILES AT ALL POINTS BETWEEN DESIGNATED POINTS. THE GRADE SHALL BE ESTABLISHED SO AS TO CONFORM TO A STRAIGHT LINE BETWEEN SAID DESIGNATED POINTS.
ELEVATIONS ARE IN FEET ABOVE U.S.C. & G.S. SEA LEVEL DATUM 1929.
THIS DRAWING AND THE DATA HEREON ARE HEREBY MADE A PART OF THE SPECIFICATIONS.
WORK SHALL BE CONSTRUCTED ACCORDING TO SPECIFICATIONS ON FILE IN THE OFFICE OF THE COUNTY ENGINEER AND SHALL BE PROSECUTED ONLY IN THE PRESENCE OF THE COUNTY ENGINEER.
WHEN WORK CAN BE STARTED, THE CONTRACTOR MUST OBTAIN A PERMIT TO EXCAVATE ON COUNTY STREETS FROM THE L. A. COUNTY ROAD DEPT., 102 W. 2ND ST. AND MAKE A DEPOSIT WITH THE COUNTY ENGINEER, ROOM 254 PAM AMERICAN BUILDING, 252 SO. BROADWAY SUFFICIENT TO COVER THE COST OF CONSTRUCTION INSPECTION AND SECOND PLANS.
APPROVAL OF THIS PLAN BY THE COUNTY OF LOS ANGELES DOES NOT CONSTITUTE A REPRESENTATION AS TO THE ACCURACY OF THE LOCATION OF OR THE EXISTENCE OR NON-EXISTENCE OF ANY UNDERGROUND UTILITY PIPE, OR STRUCTURE WITHIN THE LIMITS OF THIS PROJECT. THE WORK APPLIES TO ALL PAGES.
IF WORK IS TO BE DONE IN A STATE HIGHWAY, A PERMIT MUST BE OBTAINED FROM THE STATE OF CALIFORNIA, DIVISION OF HIGHWAYS, 120 SOUTH BRIDGE STREET.

COUNTY OF LOS ANGELES, CALIFORNIA

APPROVED, JOHN A. LAMME, COUNTY ENGINEER
APPROVED, A. M. RAWIN, CHIEF ENGINEER
BY *N. P. Bravender* ASST. SANITATION ENGINEER
BY *A. G. Rosenthal* OFFICE ENGINEER
CHECKED BY *P. K. Kahan* 7-20-57
OFFICE OF COUNTY ENGINEER, R.M. C. & NO. 7260



NO CHARGE FOR CONNECTIONS

(25150)

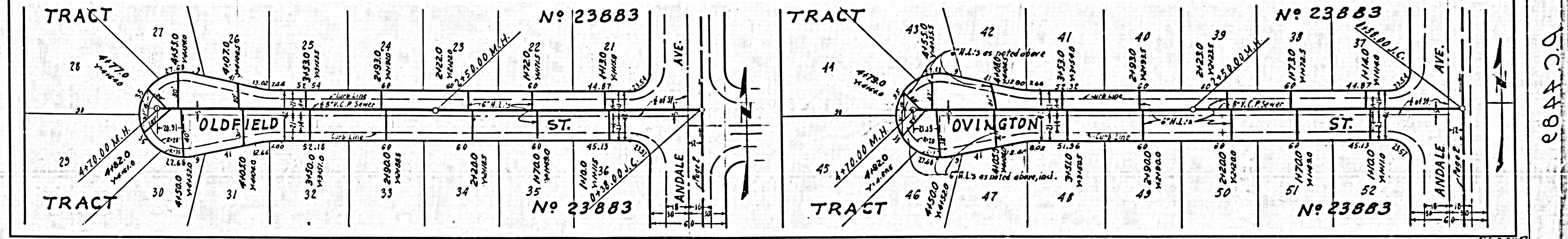
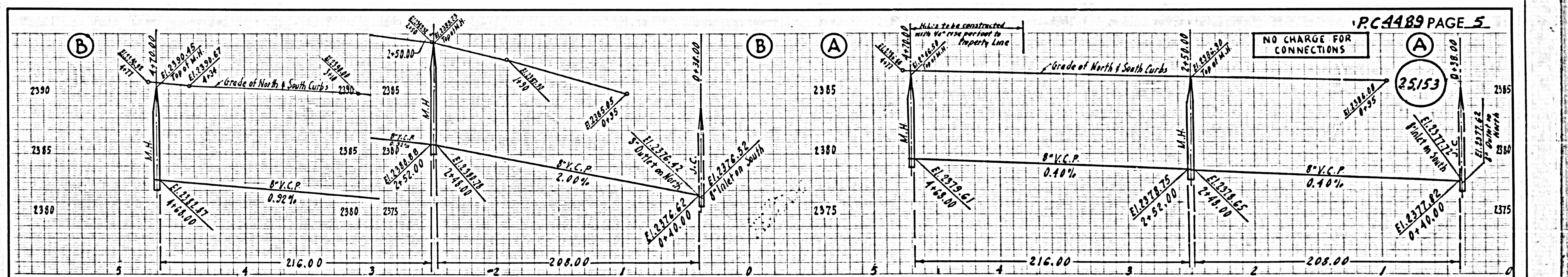
TRACT NO 22939
M.B. 602-59-61

TRACT NO 23883

TRACT NO 22939
M.B. 602-59-61

TRACT NO 23883

Shawn



PC 4489