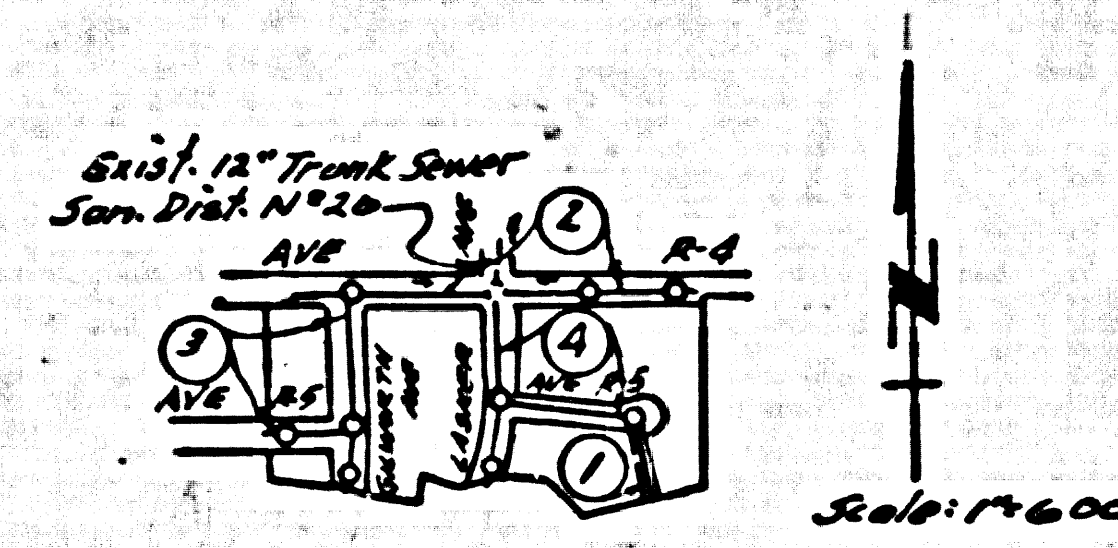
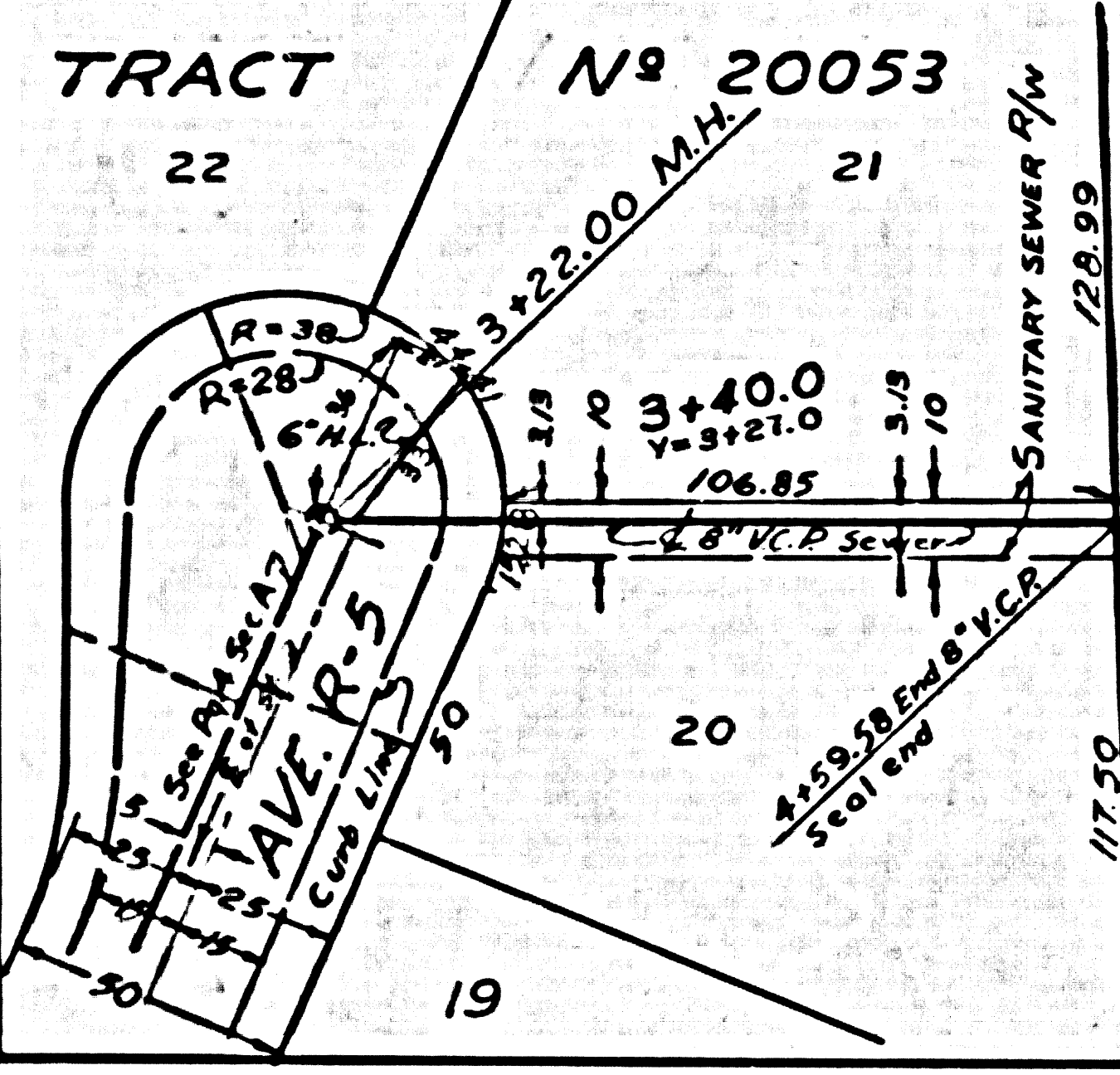


B.M. U.S.B.M. El. 2669.237, a std. disk set on top of a conc. post marked U.S.B.M. W-426. About .40mi. along the S.P.R.R. from RR. Sta. at Palmdale, 92' N.E. of RR. King, Bldg. 36 E. of E. Main Tr., 62' N.E. of a spur track switch stand & N.S.M. of a pole



INDEX MAP
TRACT NO. 20053
P.C. 4490

PALMDALE BLDG. DIST. NO. 8.1

- NOTES:
- PROVIDE STAKES ON THE PROPERTY LINE OR PROPERTY LINES PRODUCED AT RIGHT ANGLES TO THE SEWER LINE AT THE CENTER LINE OF EACH MANHOLE.
 - NO REPRESENTATIVE OF THE COUNTY ENGINEER WILL SURVEY OR LAYOUT ANY PORTION OF THE WORK.
 - THE OWNER OR HIS AUTHORIZED REPRESENTATIVE SHALL FURNISH THE COUNTY ENGINEER WITH CHAIN SHEETS AND STATION FOR ALL HOUSE LATERALS AND Y BRANCHES AND SHALL PROVIDE STAKES FOR THEM AT THEIR PROPER LOCATIONS WITH STATIONING PLAINLY MARKED. ANY CHANGE IN THESE PLANS SHALL BE APPROVED IN WRITING BY THE OWNER OR HIS REPRESENTATIVE.
 - NO REVISIONS SHALL BE MADE IN THESE PLANS WITHOUT THE APPROVAL OF THE COUNTY ENGINEER.
 - USE STANDARD MANHOLE FRAMES AND COVERS, S.A-117, EXCEPT AS NOTED.
 - USE STANDARD STRENGTH PIPE EXCEPT AS NOTED.
 - USE CEMENT MORTAR OR WEDGE-LOCK OR SPEED-SCAL FOR ALL V.C.P. JOINTS. Sec. 56-948
 - RESURFACE ALL TRENCH WITHIN PAVED AREA TO MEET L.A. COUNTY ROAD DEPT. OR CALIF. STATE HIGHWAY DEPT. REQUIREMENTS IN ACCORDANCE WITH PERMITS.
 - ENCASE FOUR FEET OF SEWER AT POINTS OF INTERFERENCE WITH POLES, S.A-119.
 - HOUSE LATERALS TO BE CONSTRUCTED WITH INVERTS AT PROPERTY LINE. 6" BELOW CURB GRADE EXCEPT AS NOTED.
 - ALL STRUCTURES SHALL BE BRICK SEWER STRUCTURES, S.A-104, EXCEPT AS NOTED.
 - FOR ALLOWABLE LEAKAGE TEST USE FORMULA NO. 1, SPEC. SEC. 54
 - MANHOLE TOPS IN UNIMPROVED RIGHTS-OF-WAY TO BE 6" ABOVE FINISHED GRADE.
 - The Private Engineer is to furnish the House Lateral depths at the property line below the top of curb elevation for each house lateral on the Grade Sheet.
 - Ball all pipe joints with cement mortar that are within 20' of all property lines, except when using Wedge-Lock or Speed Scal joints.

COLLECT CHARGES AS INDICATED
Murray Book 8-13-58

NOTE:
THE CONTRACTOR SHALL NOTIFY THE CONSTRUCTION AND STORM DRAIN DIVISION BY TELEPHONE WHITEHALL 2-8401, EXT. 40 AT LEAST 24 HOURS BEFORE STARTING ANY WORK UNDER THIS CONTRACT.

Before breaking into any existing structure and before final acceptance of this work, County Sanitation District should be notified in order that required inspection may be made.

Revision Approved: *R.L. Stuckey* 11-13-58
Added Section Page 1 - Sewer in R/W.

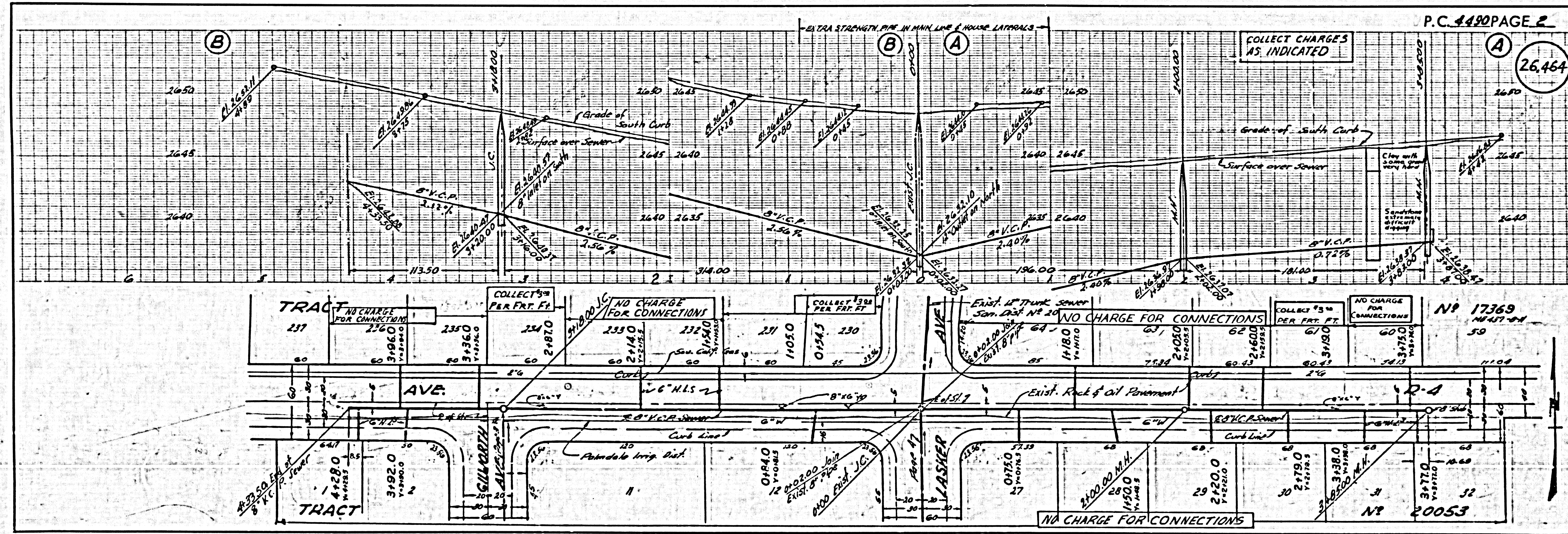
PRIVATE CONTRACT NO. 4490

W.S. 65
2 SHEETS, 4 PAGES
SCALE: 1" = 40' HORIZ. 1" = 4' VERT.
NOV. 1, 1957
PREPARED IN THE OFFICES OF
R.L. STUCKEY CO.
REG. C. E. NO. 6067
FOR LEGEND SEE PLAN NO. S-A-64

NOTE:
GRADES TO WHICH THIS IMPROVEMENT IS TO BE CONSTRUCTED ARE SHOWN ON PLANS AND PROFILES. GRADE POINTS FOR TOP OF CURBS, CENTER LINE OF STREETS, OR CENTER LINE OF ALLEYS ARE SHOWN BY CIRCLES ON PROFILES. AT ALL POINTS BETWEEN DESIGNATED POINTS THE GRADE SHALL BE ESTABLISHED SO AS TO CONFORM TO A STRAIGHT LINE BETWEEN SAID DESIGNATED POINTS.
ELEVATIONS ARE IN FEET ABOVE U.S.C. & G.S. MEAN SEA LEVEL DATUM OF 1929.
THIS DRAWING AND THE DATA HEREON ARE HEREBY MADE A PART OF THE SPECIFICATIONS.
WORK SHALL BE CONSTRUCTED ACCORDING TO SPECIFICATIONS ON FILE IN THE OFFICE OF THE COUNTY ENGINEER AND SHALL BE PROSECUTED ONLY IN THE PRESENCE OF THE COUNTY ENGINEER.
BEFORE WORK CAN BE STARTED, THE CONTRACTOR MUST OBTAIN A PERMIT TO EXCAVATE IN COUNTY STREETS FROM THE L.A. COUNTY ROAD DEPT., DIST. NO. 2, AND MAKE A DEPOSIT WITH THE COUNTY ENGINEER, ROOM 324 PAN AMERICAN BUILDING, 120 SOUTH SPRING STREET TO COVER THE COST OF CONSTRUCTION INSPECTION AND RECORD PLANS.
APPROVAL OF THIS PLAN BY THE COUNTY OF LOS ANGELES DOES NOT CONSTITUTE A REPRESENTATIVE AS TO THE ACCURACY OF THE LOCATION OF OR THE EXISTENCE OR NON-EXISTENCE OF ANY UNDERGROUND UTILITY PIPE, OR STRUCTURE WITHIN THE LIMITS OF THE PROJECT. THIS NOTE APPLIES TO ALL PAGES.
IF WORK IS TO BE DONE IN A STATE HIGHWAY, A PERMIT MUST BE OBTAINED FROM THE STATE OF CALIFORNIA, DIVISION OF HIGHWAYS, 120 SOUTH SPRING STREET.

COUNTY OF LOS ANGELES, CALIFORNIA

APPROVED, JOHN A. LAMBIE, COUNTY ENGINEER
APPROVED, A. M. BAWN, CHIEF ENGINEER
BY *J. A. Lambie* *A. M. Bawn*
SANITATION ENGINEER CIVIL ENGINEER
CHECKED BY *M. W. White* 8-19-58
OFFICE OF COUNTY ENGINEER, BLDG. C. & NO. 20
Recommended by *Richard E. Kubler*
Regional Engineer



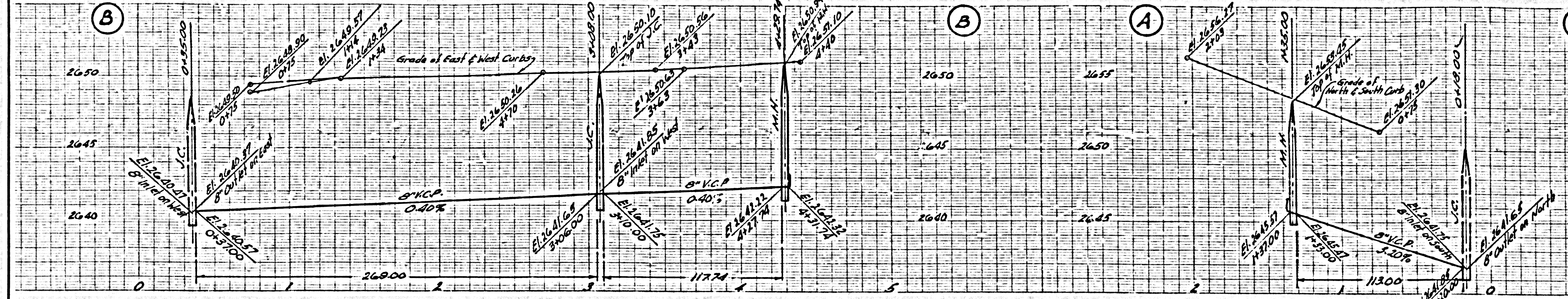
26,464

COLLECT CHARGES AS INDICATED

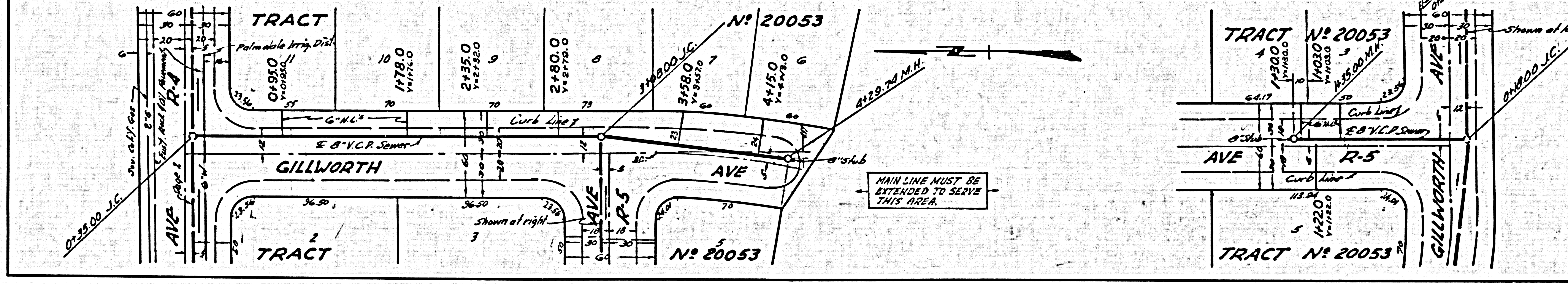
NO CHARGE FOR CONNECTIONS

NO CHARGE FOR CONNECTIONS

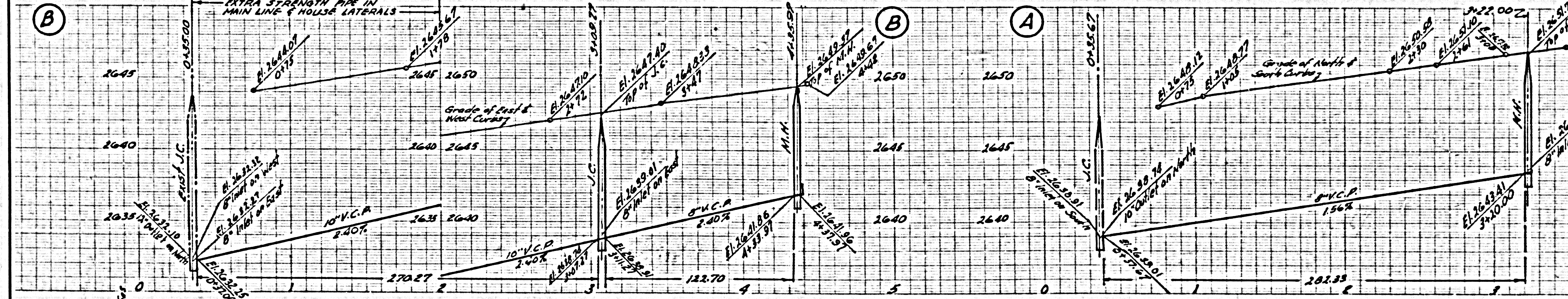
NO CHARGE FOR CONNECTIONS



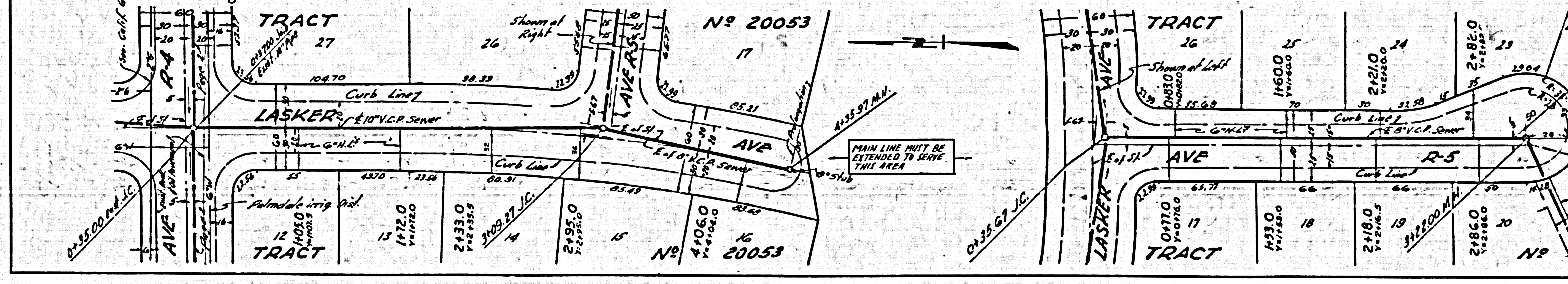
26,465
NO CHARGE FOR CONNECTIONS



MAIN LINE MUST BE EXTENDED TO SERVE THIS AREA.



26,466
NO CHARGE FOR CONNECTIONS



MAIN LINE MUST BE EXTENDED TO SERVE THIS AREA.