

B.M. Elev. 2368.66 L.A. Co. Witness
 Mon 30' S. of Ave I & of 15th
 St East
 San. Dist 14 Bench Mark

INDEX MAP
 Scale 1" = 200'
 RC. 4491

LANCASTER BLDG. DIST. NO. 8

- PROVIDE STAKES ON THE PROPERTY LINE OR PROPERTY LINES PRODUCED AT RIGHT ANGLES TO THE SEWER LINE AT THE CENTER LINE OF EACH MANHOLE.
- NO REPRESENTATIVE OF THE COUNTY ENGINEER WILL SURVEY OR LAYOUT ANY PORTION OF THE WORK.
- THE OWNER OR HIS AUTHORIZED REPRESENTATIVE SHALL FURNISH THE COUNTY ENGINEER WITH GRADE SHEETS AND STATIONING FOR ALL HOUSE LATERALS AND Y BRANCHES AND SHALL PROVIDE STAKES FOR THEM AT THEIR PROPER LOCATIONS WITH STATIONING PLAINLY MARKED. ANY CHANGE IN LOCATION SHALL BE REQUESTED IN WRITING BY THE OWNER OR HIS REPRESENTATIVE.
- NO REVISIONS SHALL BE MADE IN THESE PLANS WITHOUT THE APPROVAL OF THE COUNTY ENGINEER.
1. USE STANDARD MANHOLE FRAMES AND COVERS, S.A.-117, EXCEPT AS NOTED.
 2. USE STANDARD STRENGTH PIPE EXCEPT AS NOTED.
 3. USE CEMENT MORTAR JOINTS "WET SET" OR "DRESS SET" WITH ALL RITIFIED CLAY PIPE UNLESS SPECIFIED IN SECTIONS 36 AND 38.
 4. RESURFACE ALL 4" DITCH WITHIN PAVED AREA TO MEET L. A. COUNTY ROAD DEPT. OR CALIF. STATE HIGHWAY DEPT. REQUIREMENTS IN ACCORDANCE WITH PERMITS.
 5. SPACING FOUR FEET OF SEWER AT POINTS OF INTERFERENCE WITH POLES, S.A.-119.
 6. HOUSE LATERALS SHALL BE 4" DIA. UNLESS OTHERWISE SPECIFIED.
 7. ALL STRUCTURES SHALL BE BRICK SEWER STRUCTURES, S.A.-184, EXCEPT AS NOTED.
 8. FOR ALLOWABLE LEAKAGE TEST USE FORMULA NO. 1, SPEC. S. 16.
 9. MANHOLE TOPS IN UNIMPROVED RIGHTS-OF-WAY TO BE 6" ABOVE FINISHED GRADE.
 10. BALL ALL PIPE JOINTS WITH 4" CEMENT MORTAR THAT ARE WITHIN 20' FEET OF ALL PROPERTY LINES OR IN SANITARY SEWER R/W'S.
 11. ~~THIS CONTRACTOR SHALL NOTIFY THE CONSTRUCTION AND STORM DRAIN DIVISION BY TELEPHONE WHITEHALL 2-8401 EXT 40, AT LEAST 24 HOURS BEFORE STARTING ANY WORK UNDER THIS CONTRACT.~~
 12. THE CONTRACTOR SHALL NOTIFY THE CONSTRUCTION AND STORM DRAIN DIVISION BY TELEPHONE WHITEHALL 2-8401 EXT 40, AT LEAST 24 HOURS BEFORE STARTING ANY WORK UNDER THIS CONTRACT.

PROFILE ALIGNMENT AND GRADE OF **P.C. 4491**
SANITARY SEWERS PAGE **1**
 TO BE CONSTRUCTED IN
R/W WEST OF 15TH STREET EAST

PRIVATE CONTRACT NO. 4491
 W.S. 70
 2 SHEETS, 3 PAGES
 SCALE: VERT. 1" = 4' HORIZ. 1" = 40'
 JUNE, 1957
 PREPARED IN THE OFFICES OF
SURVEY BY GANN
 BY *Edward H. Gann*
 REG. C. E. NO. 9034
 FOR LEGEND SEE PLAN NO. S-A-64

25,750

CONNECTION CHARGES
 AS INDICATED
D. E. Olsen 2-11-58

NOTE: GRADES TO WHICH THIS IMPROVEMENT IS TO BE CONSTRUCTED ARE SHOWN ON PLANS AND PROFILES. GRADE POINTS FOR TOP OF CURBS, CENTER LINE OF STREETS, OR CENTER LINE OF ALLEYS ARE SHOWN BY CIRCLES ON PROFILES AT ALL POINTS BETWEEN DESIGNATED POINTS THE GRADE SHALL BE ESTABLISHED SO AS TO CONFORM TO A STRAIGHT LINE DRAWN BETWEEN SAID DESIGNATED POINTS.

ELEVATIONS ARE IN FEET ABOVE MEAN SEA LEVEL UNLESS OTHERWISE SPECIFIED.

THIS DRAWING AND THE DATA HEREON ARE HEREBY MADE A PART OF THE SPECIFICATIONS.

WORK SHALL BE CONSTRUCTED ACCORDING TO SPECIFICATIONS ON FILE IN THE OFFICE OF THE COUNTY ENGINEER AND SHALL BE PROSECUTED ONLY IN THE PRESENCE OF THE COUNTY ENGINEER.

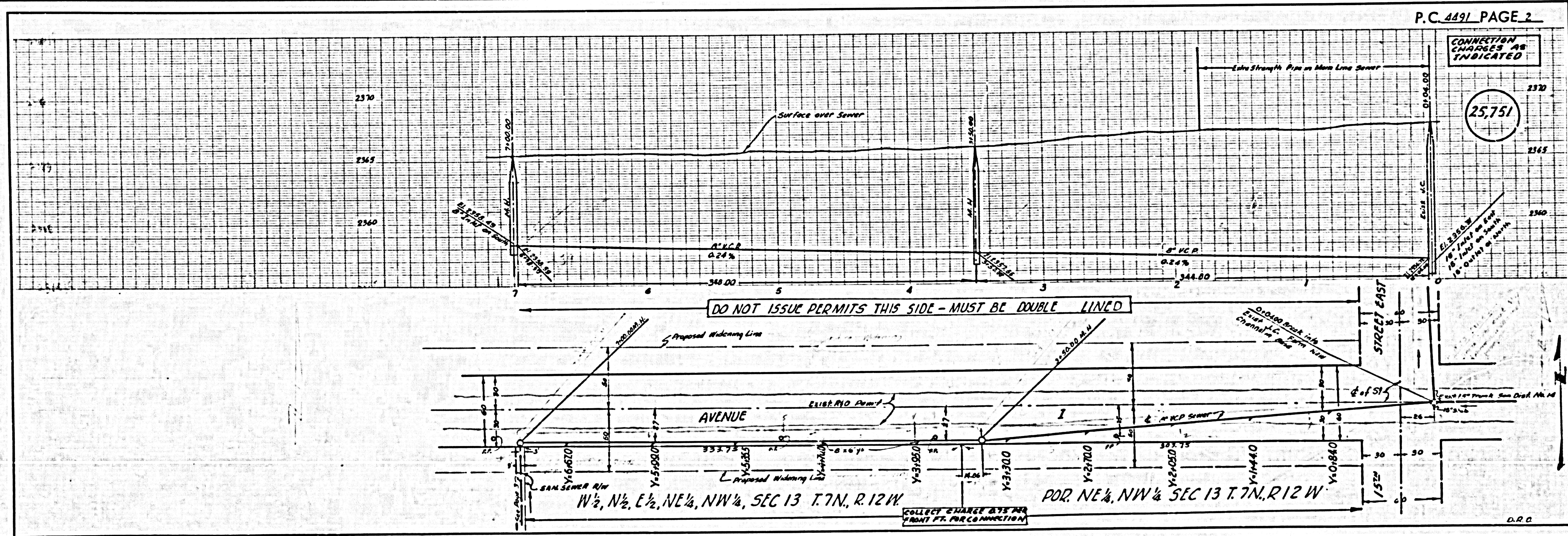
BEFORE WORK CAN BE STARTED, THE CONTRACTOR MUST OBTAIN A PERMIT TO EXCAVATE IN COUNTY STREETS FROM THE L. A. COUNTY ROAD DEPT. THE PERMIT SHALL BE OBTAINED WITH THE COUNTY ENGINEER, ROOM 324 PAVAN AVENUE, BEVERLY HILLS, CALIF. THE COST OF CONSTRUCTION INSPECTION AND RECORD PLANS.

APPROVAL OF THIS PLAN BY THE COUNTY OF LOS ANGELES DOES NOT CONSTITUTE A REPRESENTATION AS TO THE ACCURACY OF THE LOCATION OR OF THE EXISTENCE OR NON-EXISTENCE OF ANY UNDERGROUND UTILITY PIPE, OR STRUCTURE WITHIN THE LIMITS OF THIS PROJECT. THIS NOTE APPLIES TO ALL PAGES.

IF WORK IS TO BE DONE IN A STATE HIGHWAY, A PERMIT MUST BE OBTAINED FROM THE STATE OF CALIFORNIA, DIVISION OF HIGHWAYS, 138 SOUTH SPRING STREET.

COUNTY OF LOS ANGELES, CALIFORNIA

APPROVED, JOHN A. LAMBE, COUNTY ENGINEER
 APPROVED, A. M. RAWN, CHIEF ENGINEER
 BY *John A. Lambe* L.A. COUNTY ENGINEER
 BY *A. M. Rawn* CHIEF ENGINEER
 CHECKED BY *P. E. Johnson* 2-3-58
 OFFICE OF COUNTY ENGINEER, REG. C. E. NO. 78162



P.C. 4491 PAGE 2

CONNECTION CHARGES AS INDICATED

25,751

W 1/2, N 1/2, E 1/2, NE 1/4, NW 1/4, SEC 13 T. 7N, R. 12W
 POR. NE 1/4, NW 1/4 SEC 13 T. 7N, R. 12W

COLLECT CHARGE \$75 PER FRONT FT. FOR CONNECTION

D.R.C.

CONNECTION CHARGE AS INDICATED

25,752

