

SAN DIMAS BLDG. DISTRICT No. 10

NOTE:

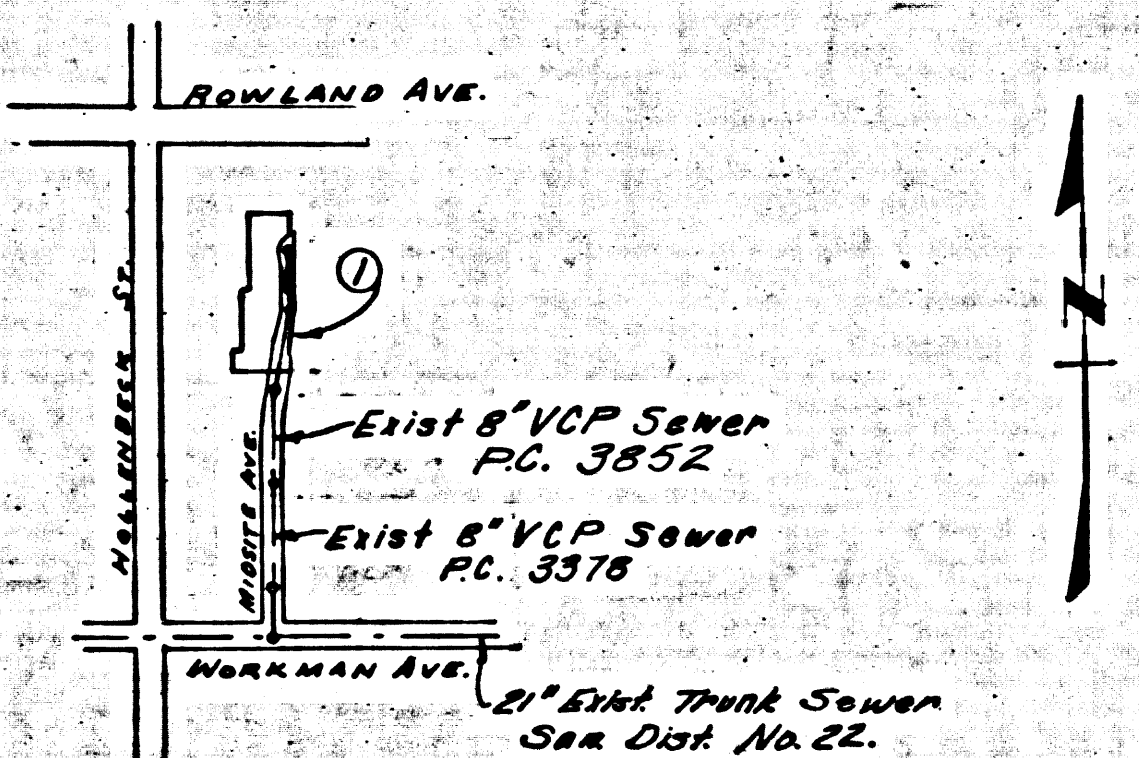
- Provide stakes on the property lines or property lines produced at right angles to the sewer line at the center line of each manhole.
- No representative of the County Engineer will survey or layout any portion of the work.
- The owner or his authorized representative shall furnish the County Engineer with grade sheets and stations for all house laterals and Y branches and shall provide stakes for them at their proper locations with stationing plainly marked. Any change in location shall be requested in writing by the owner or his representative.
- No revisions shall be made in these plans without the approval of the County Engineer.
1. Use standard manhole frames and covers, S-a-117.
 2. Use standard strength pipe except as noted.
 3. Use cement mortar for all vitrified clay pipe joints.
 4. Resurface all trench within paved area to meet L.A. County Road Dept. or California State Highway Dept. requirements in accordance with permit.
 5. Encase four feet of sewer at points of interference with poles, S-a-119.
 6. House laterals to be constructed with inverts at property line 6 feet below curb grade except as noted.
 7. All structures shall be brick sewer structures, S-a-104.
 8. For allowable leakage test, use Formula No. 1, Spec's., Sec. 54.
 9. Manhole tops in unimproved Rights-Of-Way to be 6" above finish grade.
 10. The Private Engineer is to furnish the House Lateral depth at the property line below the top of curb elevation for each house Lateral on the grade sheet.

B.M. No. 56-449 Elev. = 536.32
Barranca Ave. & Rowland Ave. at SW corner
L&T in Top of S.W. Side of 30" Standpipe #22-9

DO NOT ISSUE PERMITS UNTIL TRACT NO 23765 HAS BEEN RECORDED.

NO CHARGE FOR CONNECTIONS
Submitted 8-28-57

Note: If The Contractor shall notify the Construction and Storm Drain Division by telephone, Madison 94747, EXT 362 at least 24 hours before starting any work under this contractor.



INDEX MAP
Scale: 1" = 600'
Tract No. 23765
PC-4492

Note: Figure in Circle Indicates Page Number

PROFILE, ALIGNMENT AND GRADE OF
SANITARY SEWERS
TO BE CONSTRUCTED IN

MIDSITE AVENUE
IN
TRACT 23765
PRIVATE CONTRACT NO. 4492
W. S. 47
1 SHEET ; 2 PAGES
AUGUST, 1957

Scale: VERT. 1" = 4'
HORIZ. 1" = 40'
PREPARED IN THE OFFICES OF
Pond ENGINEERING CO.
Marshall G. Pond
Reg. C. E. No. 8292

FOR LEGEND SEE PLAN NO. S-a-64

NOTE:
Grades to which this improvement is to be constructed are shown on plans and profiles. Grade points for top of curbs, center line of streets, or center line of alleys are shown by circles on profiles. At all points between designated points the grade shall be established so as to conform to a straight line drawn between said designated points.
Elevations are in feet above 6326.5 Sea Level Datum of 1929.
This drawing and the data hereon are hereby made a part of the specifications.
Work shall be constructed according to specifications on file in the office of the County Engineer and shall be prosecuted only in the presence of the County Engineer.
Before work can be started, the contractor must obtain a permit to excavate in County streets from the L.A. County Road Dept., 108 W. 2nd St. and make a deposit with the County Engineer, 108 W. 2nd St., 255 So. Broadway, sufficient to cover the cost of construction inspection and record plans.
Approval of this plan by the County of Los Angeles does not constitute a representation as to the accuracy of the location of or the existence or non-existence of any underground utility, pipe, or structure within the limits of this project. This note applies to all sheets.
If work is to be done in a State Highway, a permit must be obtained from the State of California, Division of Highways, 120 South Spring Street.

COUNTY OF LOS ANGELES, CALIFORNIA
Approved, John A. Lambis, County Engineer
Approved, A. M. Rawns
CHIEF ENGINEER SAN. DIST. NO. 22
W. H. Williams
Office Engineer
Checked by: *W. D. Dike 8-29-57*
Office of County Engineer, Reg. C. E. No. 5466

25378 PC-4492
PAGE 1
25,378
Note -
Page 1 and page 2
to be sewn together
after final prints
are returned.
R.G.B.
7/16/57

Trim Line 7

Trim Line 7

