

STA 0+00 - CONSTRUCT J.C. AROUND EXISTING 18" SEWER. BREAK OUT PIPE FOR CONNECTION.

CONSTRUCT CONCRETE SADDLE ENCASEMENT FOR EXISTING SANITARY SEWER PER APPROVED PLANS P.C. 6075 C

EXIST SEWER MH INV EL 153.00

EXIST SEWER MH INV EL 152.43

FOR FIRE LINE ENCASEMENT USE ARMED CLEAN PIPE 15' 52' LONG 14 GA OR EQUAL

PUMP HOUSE SEE DETAIL

BOULEVARD

PROPERTY LINE

PROPERTY LINE

FLOW (P.C. 2015 EXISTING 18" SANITARY SEWER ON PROPERTY LINE)

FUTURE BUILDING

HOME & AUTO SUPPLY WAREHOUSE

INDUSTRIAL PRODUCTS WAREHOUSE

SERVICE AREA

SALES STORAGE AREA

STA 5188.16 END OF SAN SEWER

OFFICE AREA

CATCH BASIN #2 FOR DETAILS SEE DWG

CONNECTION TO EXISTING GAS MAIN BY 250 CALIP GAS COMPANY

FOR CONTINUATION OF ALL RW LINES INSIDE OF BUILDINGS SEE PLUMBING DRAWINGS

PIV TYPE SEE DETAIL

FIRE HYDRANT WITH NOSE SEE DETAIL (TYR)

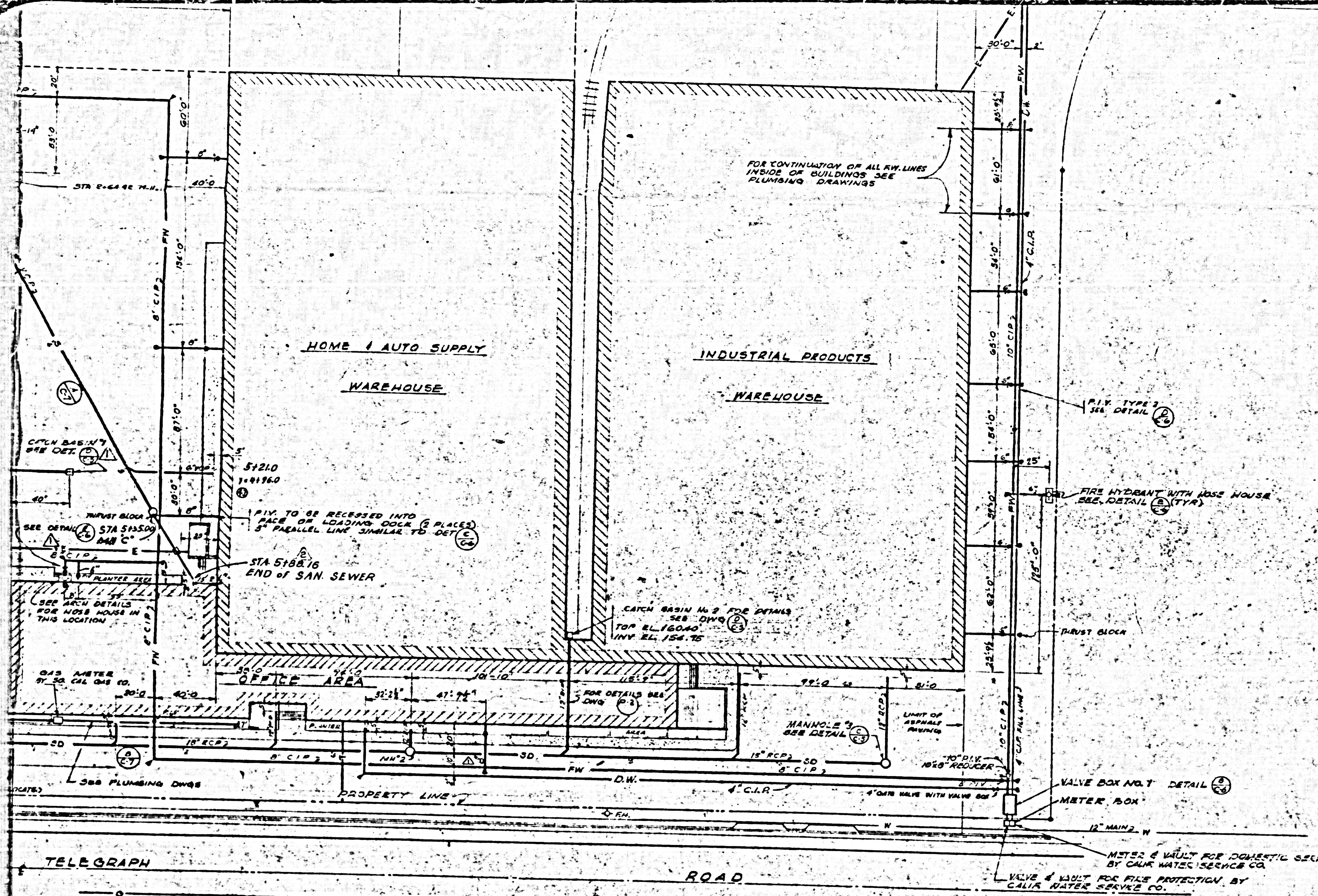
PIV BLOCK

TOP EL 160.00 INV EL 154.75

FOR DETAILS SEE DWG

MANHOLE

LIMIT OF FINISH

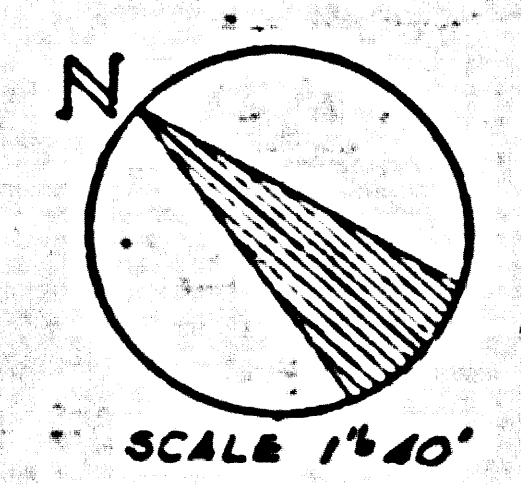


ELEVATIONS TAKEN FROM SURVEY BY R.B. HUEY, LIC. LAND SURVEYOR #1742, DATED MAR. 10th 1957. TO CONVERT TO L.A. COUNTY ROAD DEPT. DATUM, SUBTRACT 9.07' FROM GRADES GIVEN.

BENCH MARK DATUM: COUNTY ROAD DEPT. BRASS CAP MKH. ON WASHINGTON BLVD. AT B.C. 2500 ± N.E. OF TELEGRAPH ROAD, ELEVATION 169.79 (CENTRAL MAN. DIST. DATUM).

BENCH MARK ESTABLISHED: L.T. SET IN R.R. SIGNAL BASE ON N.W. QUARTER PROPERTY LINE PROJECTED 95' N.E. OF MOST N.E. CORNER OF SUBJECT PROPERTY. ELEVATION - 152.30.

P.C. 4498-1
82 of 82



LEGEND

—S—	EXISTING UTILITY LINES
—SD—	SANITARY SEWER LINE
—G—	STORM DRAIN LINE
—PW—	GAS LINE
—FW—	FIRE WATER LINE
—DW—	DOMESTIC WATER LINE
—FH—	EXISTING FIRE HYDRANT
—FH—	FIRE HYDRANT WITH HOSE HOUSE
—M—	MANHOLE
—CB—	CATCH BASIN
—RV—	ROST INDICATOR VALVE
—R—	REDUCER
—TB—	THRUST BLOCK
—V—	VALVE
—E—	ELECTRICAL DUCT
—T—	TELEPHONE DUCT

GENERAL CONTRACTOR NOTE: ALL FIRE LINES AND 4" RILL LINE, PUMP HOUSE & SUCTION TANK, NOT IN GENERAL CONTRACT

PRIVATE CONTRACT No. 4498
EAST LOS ANGELES, BLDG. DIST. No. G

COUNTY OF LOS ANGELES, CALIFORNIA
APPROVED, JOHN A. LAMBIE, County Engineer
By *J. A. Lambie*
Asst. Sanitation Engineer

APPROVED, A. M. RAWN, Chief Engineer
By *A. M. Rawn*
Chief Engineer

Checked *A. M. Rawn* 1-11-57
Office of County Engineer Reg. C. E. No. 2482

APPROVED, INDUSTRIAL WASTE DIVISION
By *J. A. Lambie*

NOTE: THE ABOVE APPROVAL BY THE COUNTY ENGINEER APPLIES TO THE 8" SANITARY SEWER SYSTEM AND MANHOLES BETWEEN STA. 0+00 AND 5+74.78 ONLY, SEE SHEET 2 FOR GENERAL NOTES

APPROVED BY
W. J. Patten
ARCHITECT
REGISTERED ARCHITECT
C-17853
DATE MAY 14, 1957

UTILITY PLAN

FIRESTONE PROJECT 839 WASHINGTON BLVD. AND TELEGRAPH ROAD, LOS ANGELES, CALIF.

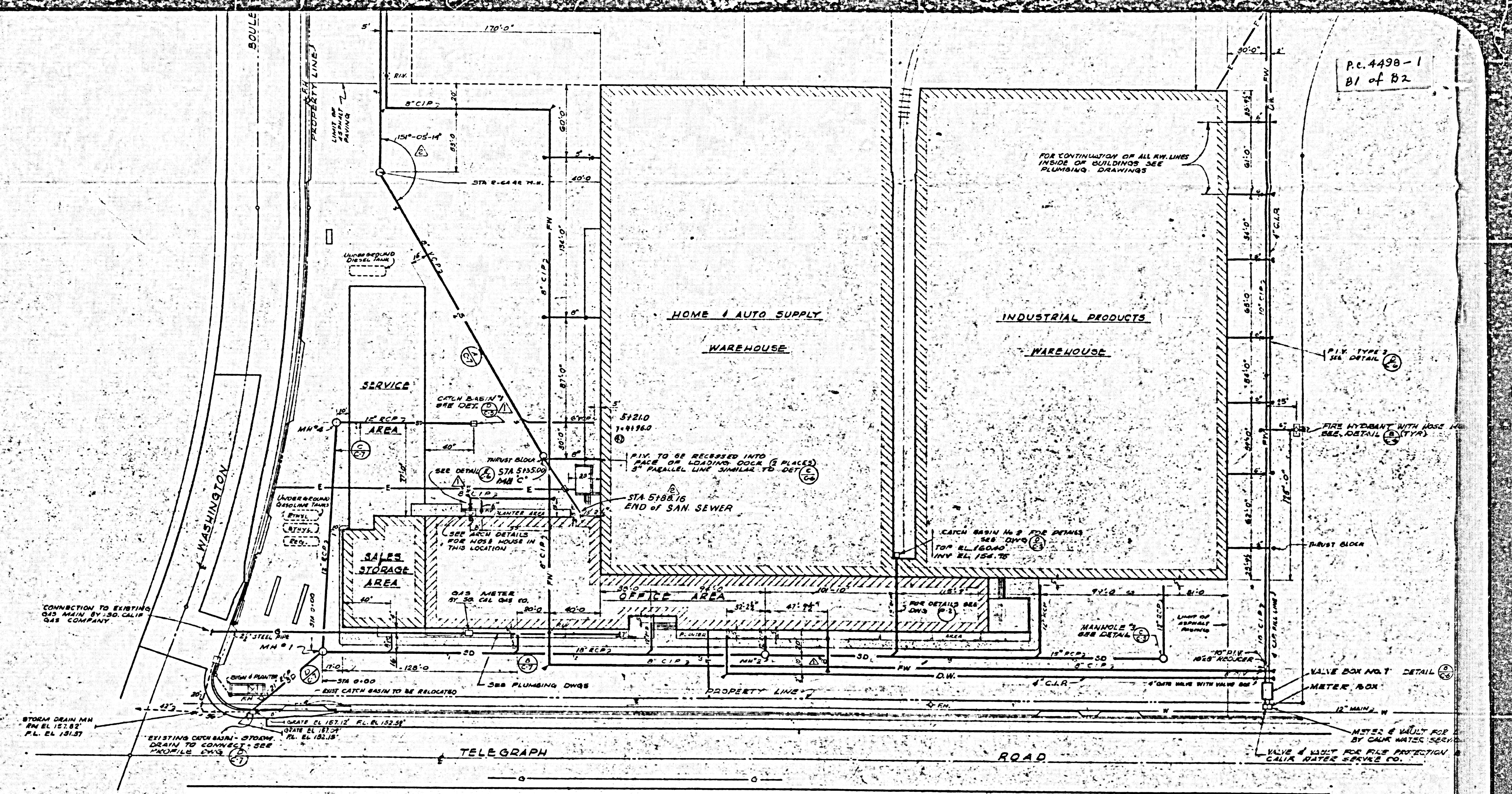
THE FIRESTONE TIRE & RUBBER CO.
REAL ESTATE DIVISION
2228 FIRESTONE BLVD.
LOS ANGELES 24, CALIF. SUBLOW 3-4411

THIS DRAWING IS THE PROPERTY OF THE FIRESTONE TIRE & RUBBER CO. THIS DRAWING IS LOANED WITHOUT OTHER CONSIDERATION THAT THE BORROWER WILL PROTECT IT FROM UNAUTHORIZED REPRODUCTION OR DISSEMINATION AND IS NOT TO BE USED IN WHOLE OR IN PART FOR ANY OTHER PROJECT OR FOR ANY OTHER PURPOSE WITHOUT THE WRITTEN CONSENT OF THE ENGINEER OR ARCHITECT. THE ACCEPTANCE OF THIS DRAWING SHALL BE CONSIDERED AS AN ACCEPTANCE OF THE ACCURACY OF THE INFORMATION AND DATA FURNISHED TO THE ENGINEER OR ARCHITECT AND TO THE DRAWING OF THE ENGINEER OR ARCHITECT.

JOB NO. 837
PROJ. ENG. J. MOORE
DRAWN BY N. A. DONNELL
CHECKED BY E. PETTET
DATE 9 November 1957
SHEET NO. C-3

P E R R E I R A & L U C K M A N
P L A N N I N G . A R C H I T E C T U R E . E N G I N E E R I N G

P.C. 449B-1
B1 of B2



PRIVATE CONTRACT No. 449B
 EAST LOS ANGELES BLDG. DIST. No. 6
 COUNTY OF LOS ANGELES, CALIFORNIA
 APPROVED, JOHN A. LAMBIE, County Engineer
 By *N.R. Brande*
 Assn. Sanitation Engineer
 APPROVED, A. M. BROWN, Chief Eng. near
 By *A. M. Brown*
 Chief Engineer

APPROVED, INDUSTRIAL WASTE DIVISION
 By *J. McLaughlin* 4/27/67

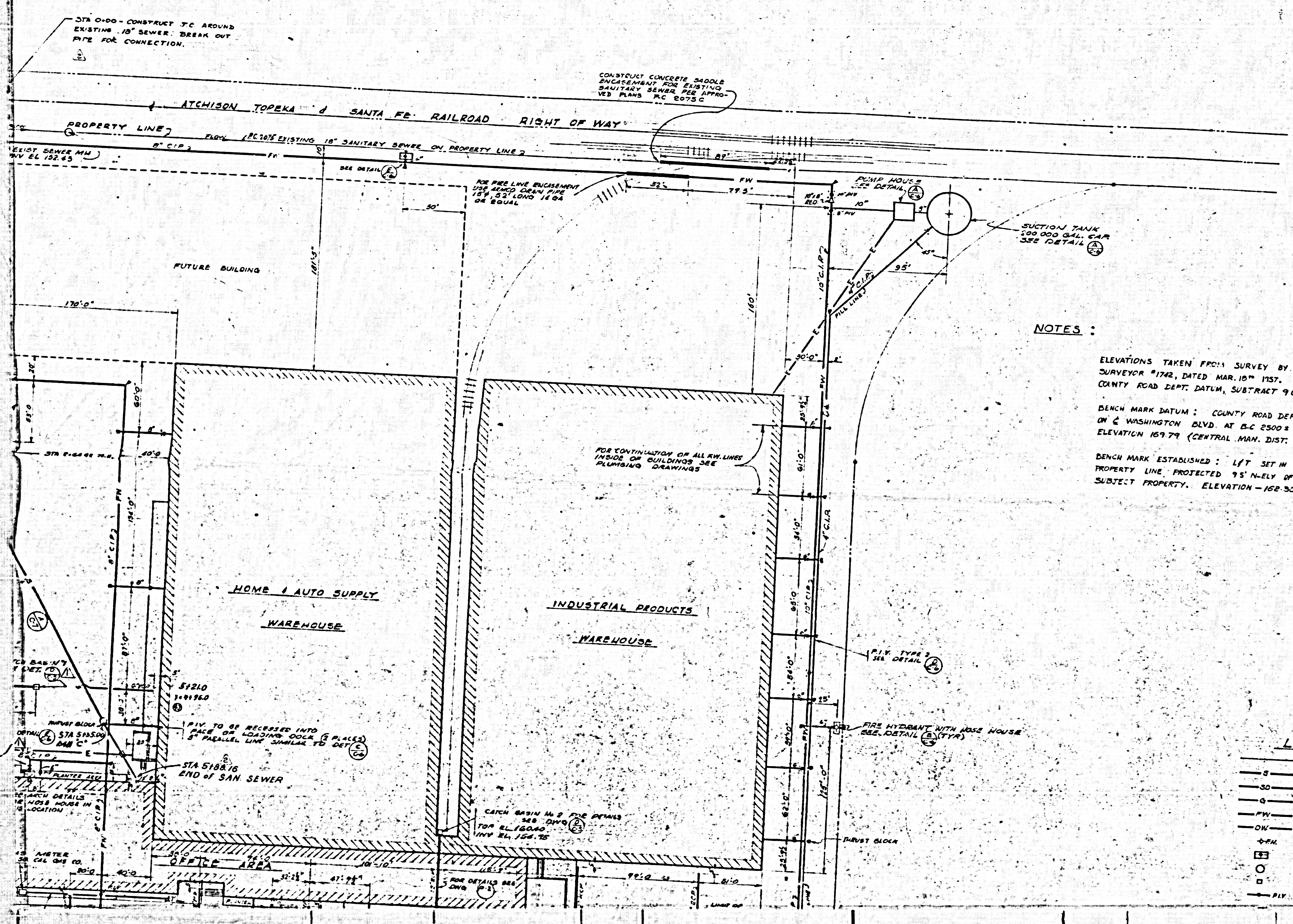
NOTE: THE ABOVE APPROVAL BY THE COUNTY ENGINEER APPLIES TO THE 8\"/>

1	2	3	4	5	6	7	8	9	10	11	12	13	14	15	16	17	18	19	20	21	22	23	24	25	26	27	28	29	30	31	32	33	34	35	36	37	38	39	40	41	42	43	44	45	46	47	48	49	50	51	52	53	54	55	56	57	58	59	60	61	62	63	64	65	66	67	68	69	70	71	72	73	74	75	76	77	78	79	80	81	82	83	84	85	86	87	88	89	90	91	92	93	94	95	96	97	98	99	100
---	---	---	---	---	---	---	---	---	----	----	----	----	----	----	----	----	----	----	----	----	----	----	----	----	----	----	----	----	----	----	----	----	----	----	----	----	----	----	----	----	----	----	----	----	----	----	----	----	----	----	----	----	----	----	----	----	----	----	----	----	----	----	----	----	----	----	----	----	----	----	----	----	----	----	----	----	----	----	----	----	----	----	----	----	----	----	----	----	----	----	----	----	----	----	----	----	----	----	-----

PC 4498
Sheet 1 of 2 Sheets.

25.060

PC 4498-1
A2 of B2

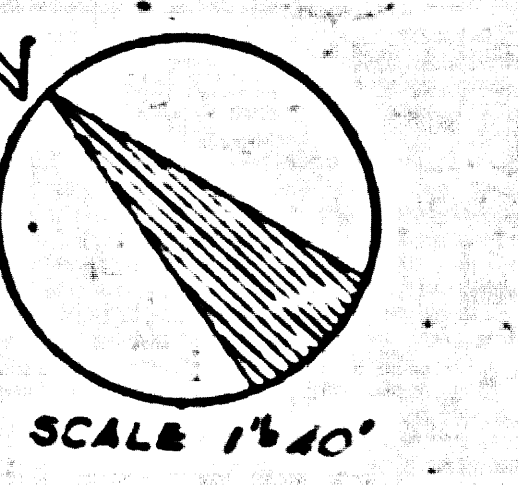


NOTES :

ELEVATIONS TAKEN FROM SURVEY BY R.B. HUEY, LIC. LAND SURVEYOR #1742, DATED MAR. 10th 1957. TO CONVERT TO L.A. COUNTY ROAD DEPT. DATUM, SUBTRACT 9.07' FROM GRADES GIVEN.

BENCH MARK DATUM : COUNTY ROAD DEPT. BRASS CAP MCH. ON WASHINGTON BLVD. AT B-C 2500 ± N-E OF TELEGRAPH ROAD, ELEVATION 169.79 (CENTRAL MAN. DIST. DATUM).

BENCH MARK ESTABLISHED : L/T SET IN R.R. SIGNAL BASE ON N.W. LY. PROPERTY LINE, PROJECTED 95' N-E LY. OF MOST N-E LY. CORNER OF SUBJECT PROPERTY. ELEVATION - 152.30.

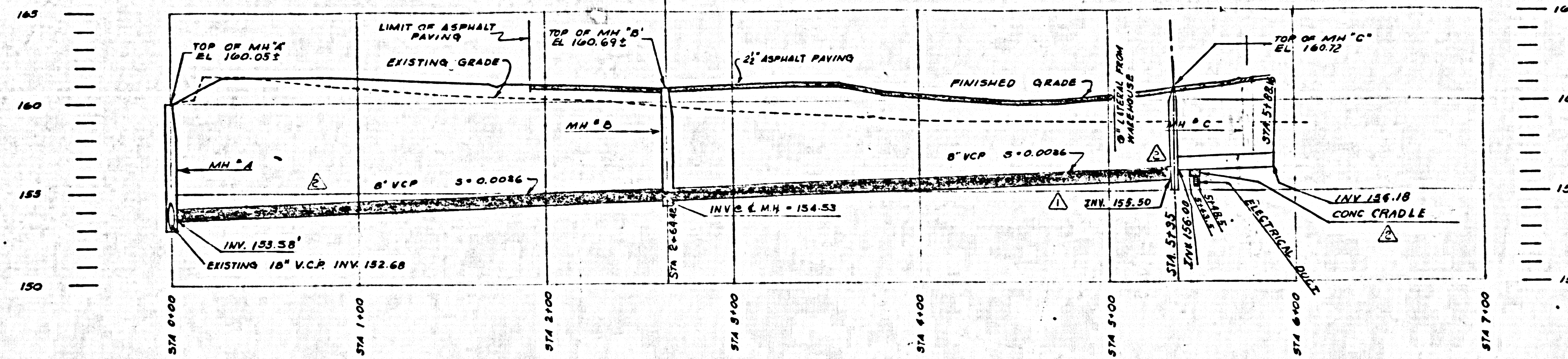


SCALE 1"=40'

LEGEND

—S—	EXISTING UTILITY LINES
—SO—	SANITARY SEWER LINE
—G—	STORM DRAIN LINE
—G—	GAS LINE
—FW—	FIRE WATER LINE
—DW—	DOMESTIC WATER LINE
—FH—	EXISTING FIRE HYDRANT
—FH—	FIRE HYDRANT WITH NOSE HOUSE
—M—	MANHOLE
—CB—	CATCH BASIN
—PIV—	POST INDICATOR VALVE

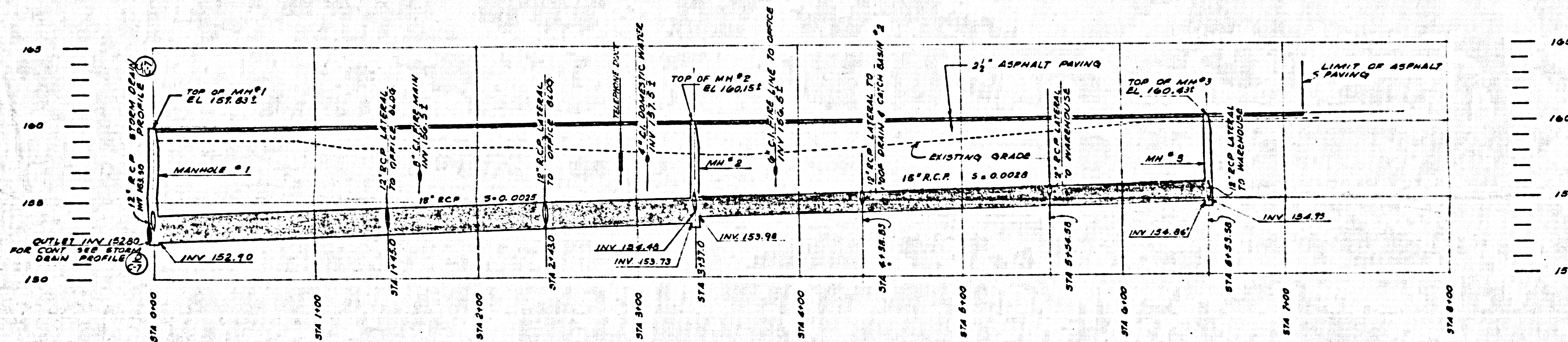
REIRA & LUCIMAN
 ARCHITECTURE • ENGINEERING
 1200 SUNSET BLVD
 LOS ANGELES
 CALIFORNIA



SANITARY SEWER PROFILE

SCALE
HORIZ 1"=40'
VERT 1"=4'

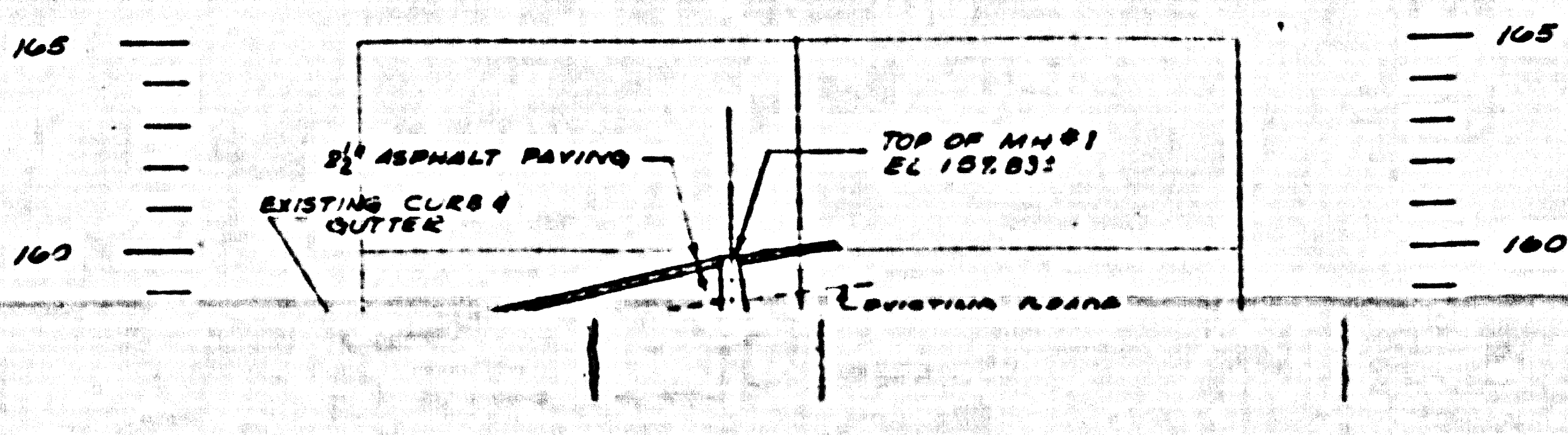
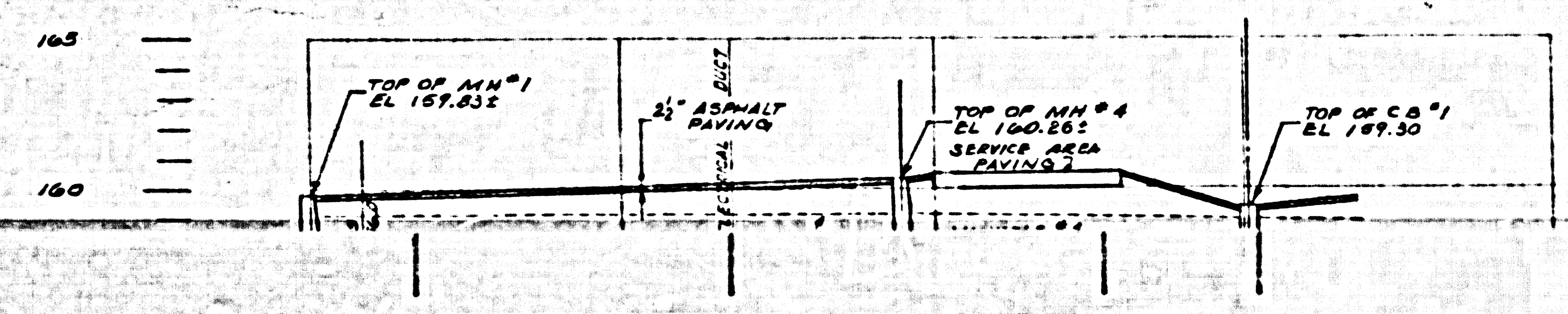
PC 498-2
A1 of B2



STORM DRAIN PROFILE

SCALE
HORIZ 1"=40'
VERT 1"=4'

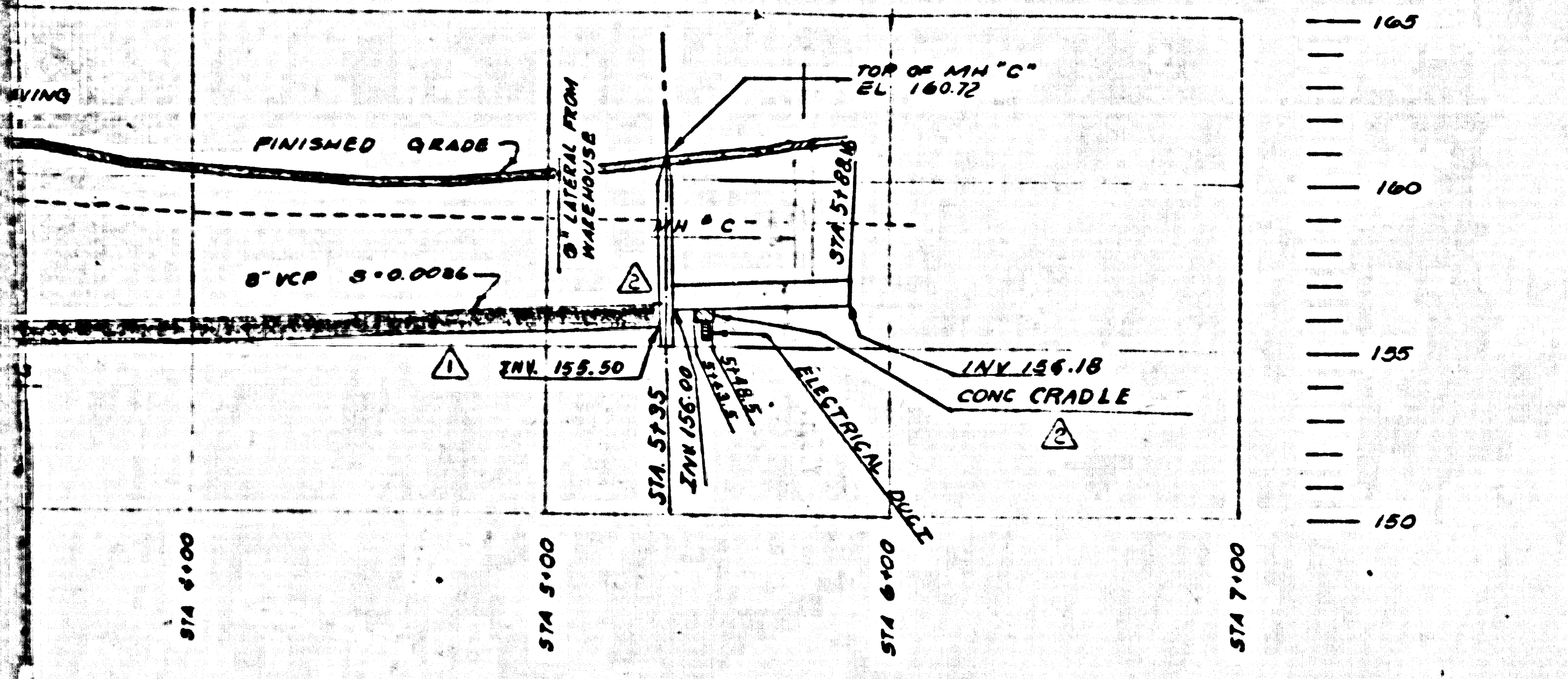
B



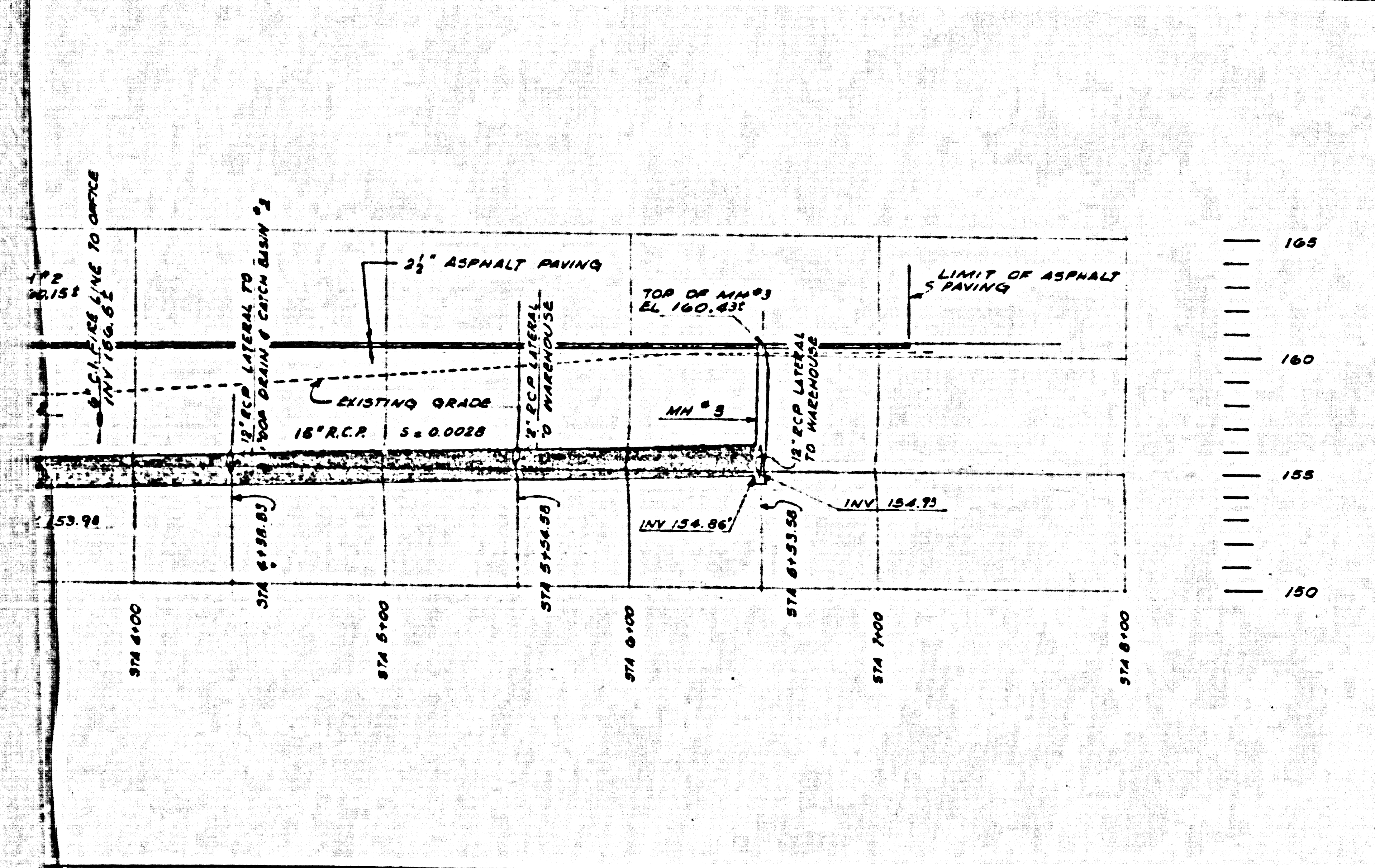
P.C. 4498
Sheet 2 of 2 Sheets.

25.061

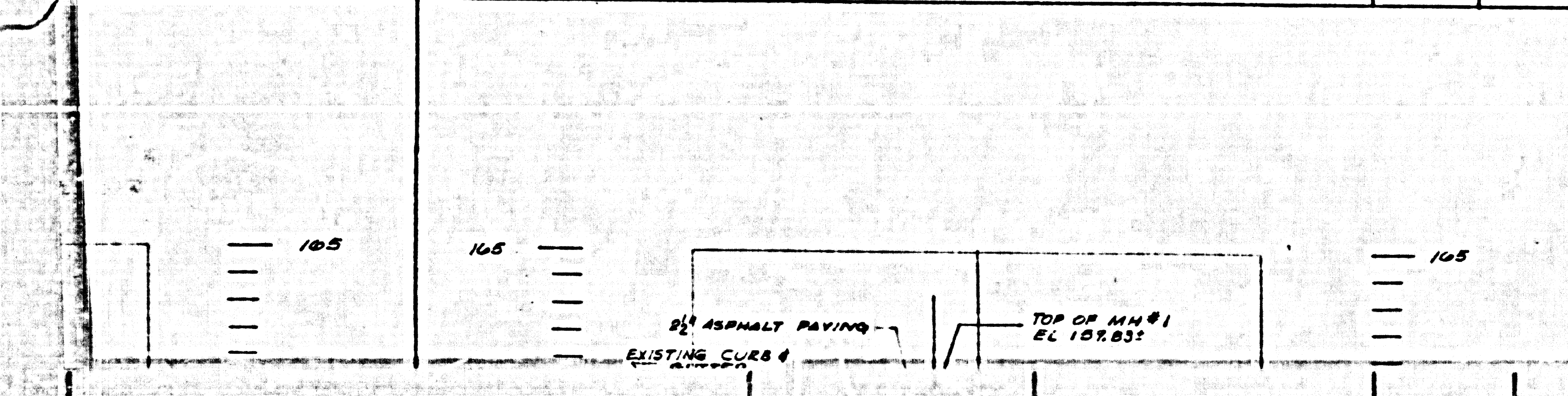
P.C. 4498-2
A2 of B2



PROFILE
SCALE
HORIZ 1"=40'
VERT 1"=4'



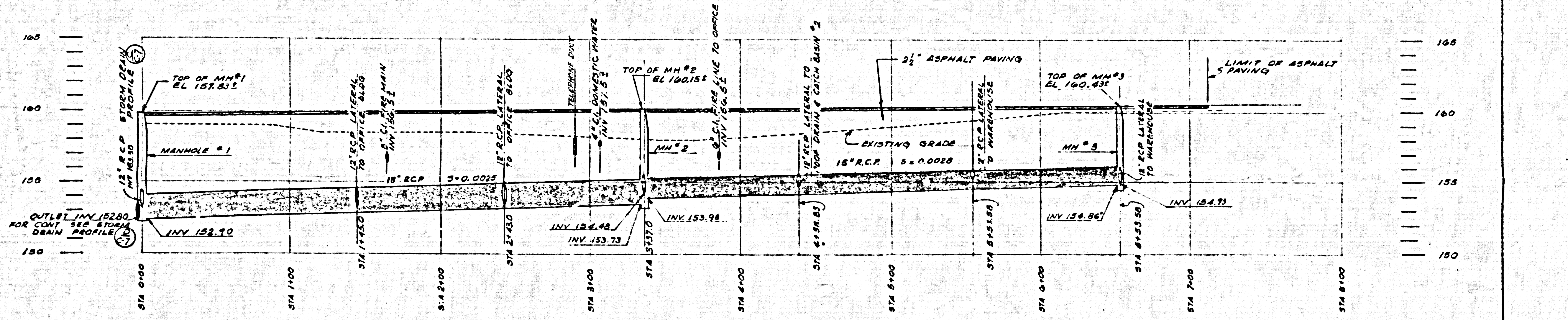
DRAIN PROFILE
SCALE
HORIZ 1"=40'
VERT 1"=4'



Before work can be started, the contractor must obtain a permit to excavate. The permit shall be obtained from the City Engineer, 1400 North Main Street, Los Angeles, California. The permit shall require the contractor to provide a catch basin and catch basin cover at all times during the construction of the project. The contractor shall be responsible for the safety of the public and the workers during the construction of the project. The contractor shall be responsible for the safety of the public and the workers during the construction of the project.

9220 SUNSET BLVD
LOS ANGELES
CALIFORNIA

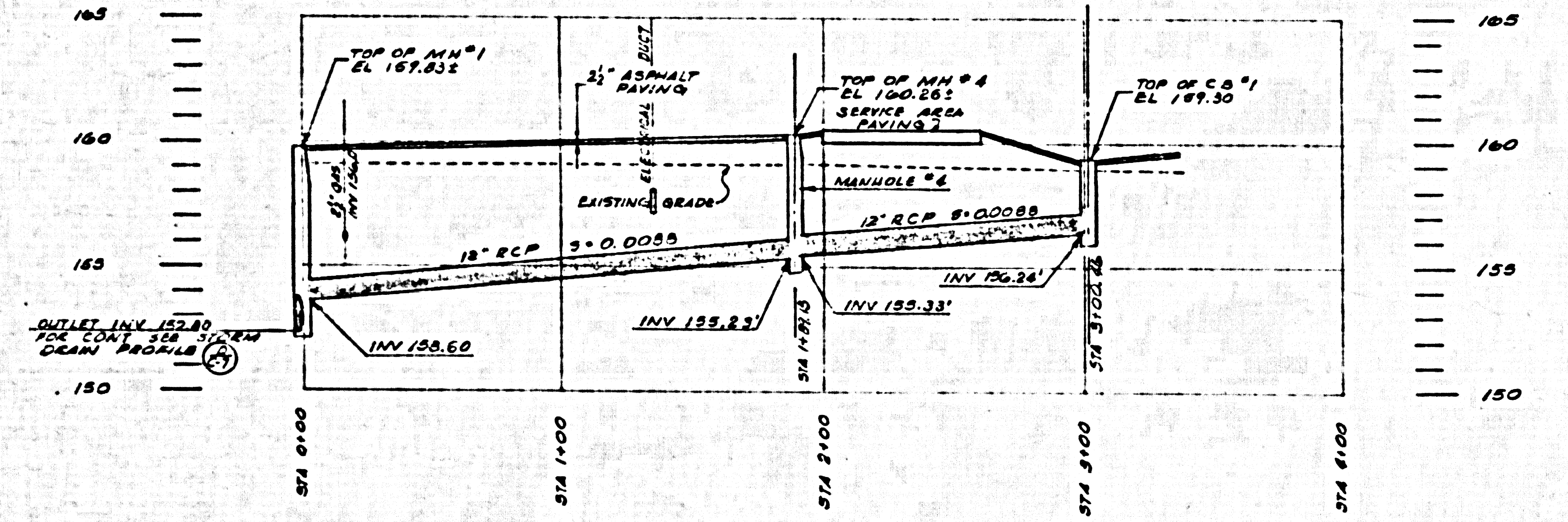
PEREIRA & LUCKMANN
PLANNING - ARCHITECTURE - ENGINEERING



P.C. 4498-2
B1 of B2

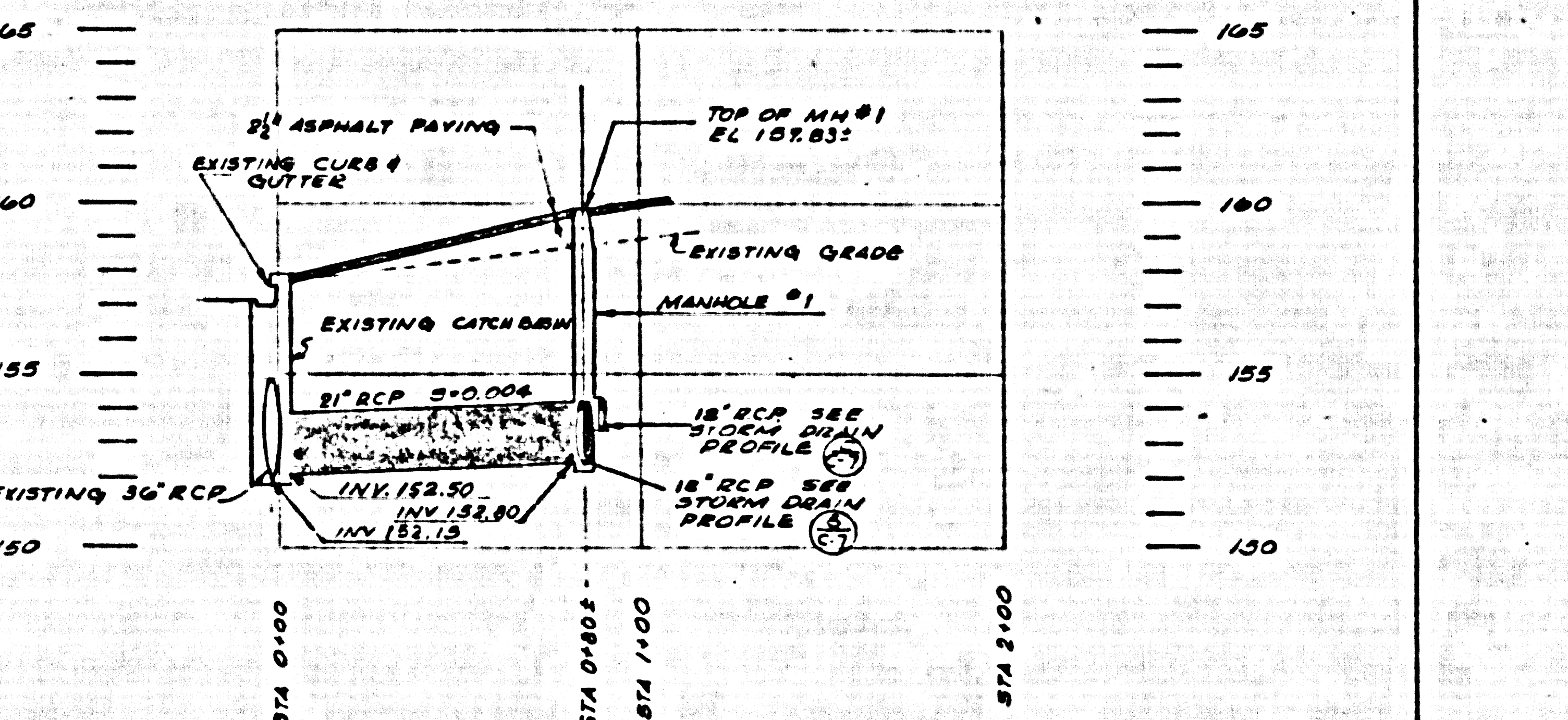
STORM DRAIN PROFILE

SCALE
HORIZ 1"=40'
VERT 1"=4'
B



STORM DRAIN PROFILE

SCALE
HORIZ 1"=40'
VERT 1"=4'
C



STORM DRAIN PROFILE

SCALE
HORIZ 1"=40'
VERT 1"=4'
D

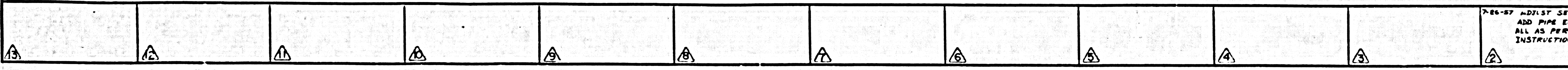
APPROVED BY

 ARCHITECT

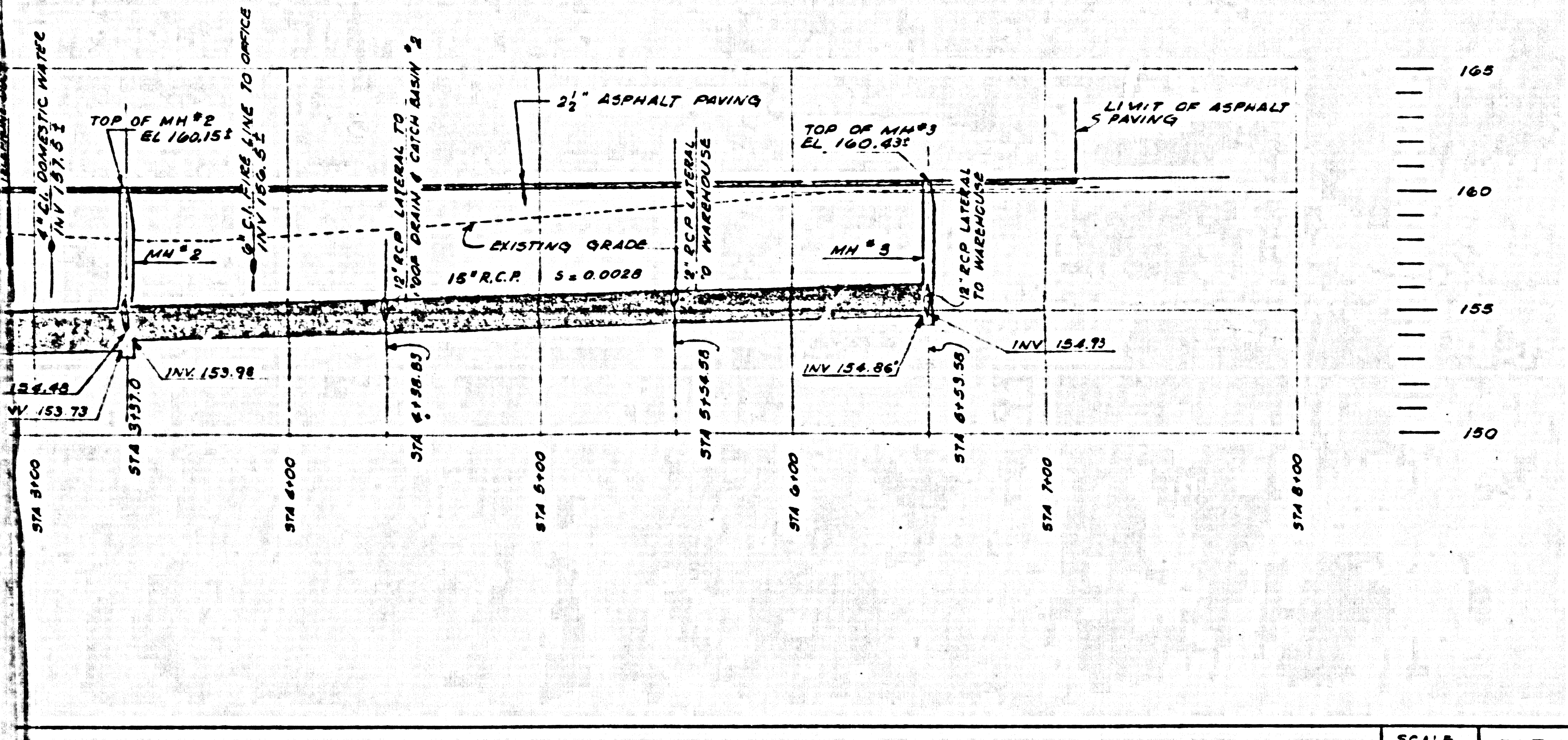
 ENGINEER C-6 47063
 OWNER
 DATE MAY 14, 1957

7-26-57 ADJUST SEWER GRADE
 AND PIPE ENCASEMENT
 ALL AS PER L.A.CO.
 INSTRUCTIONS.

LEGEND:
 SECTION A-A
 SHEET NO. A-8
 DETAIL NO. 1
 SHEET NO. A-7



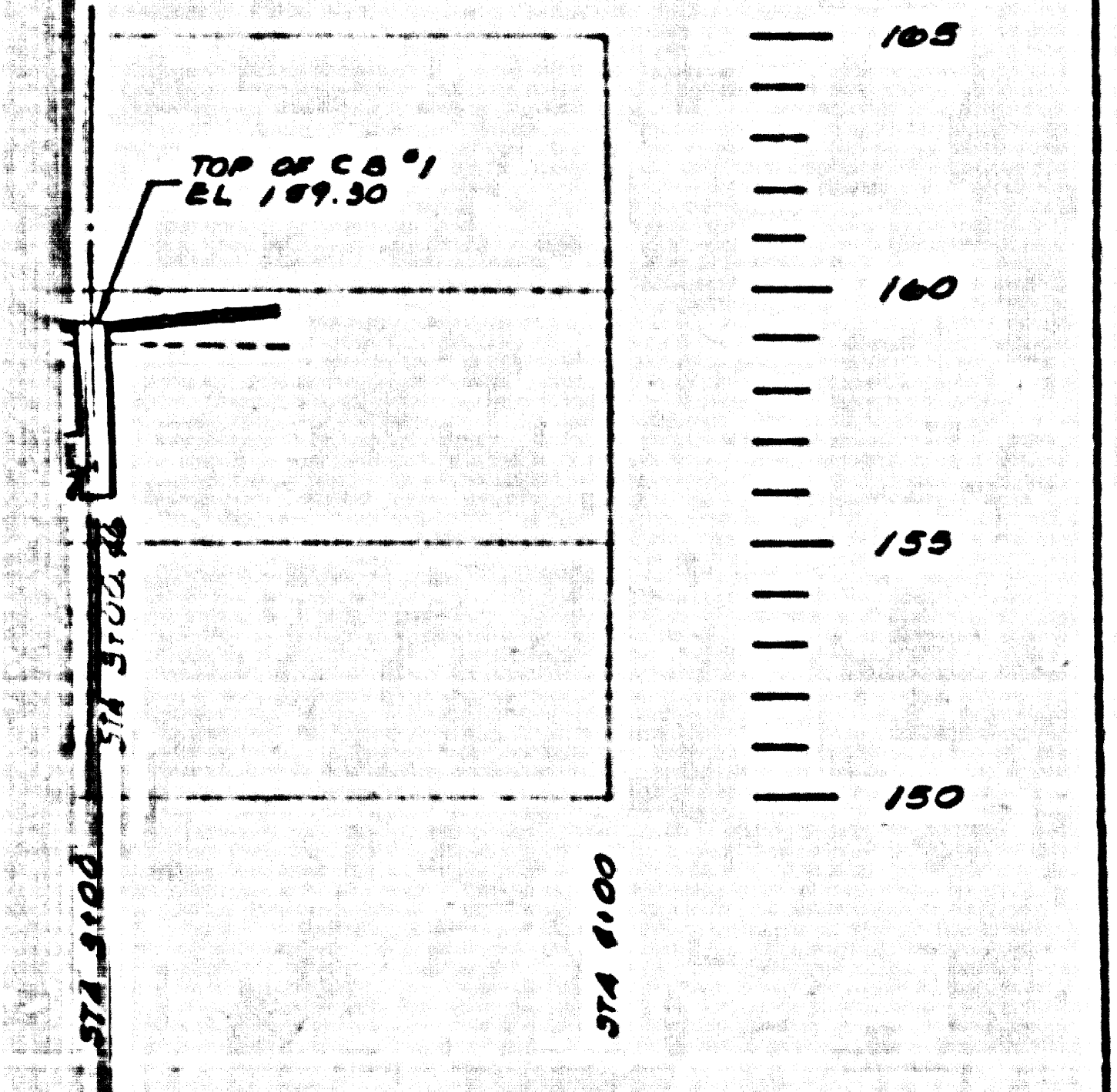
P.C. 4498-2
B2 of B2



STORM DRAIN PROFILE

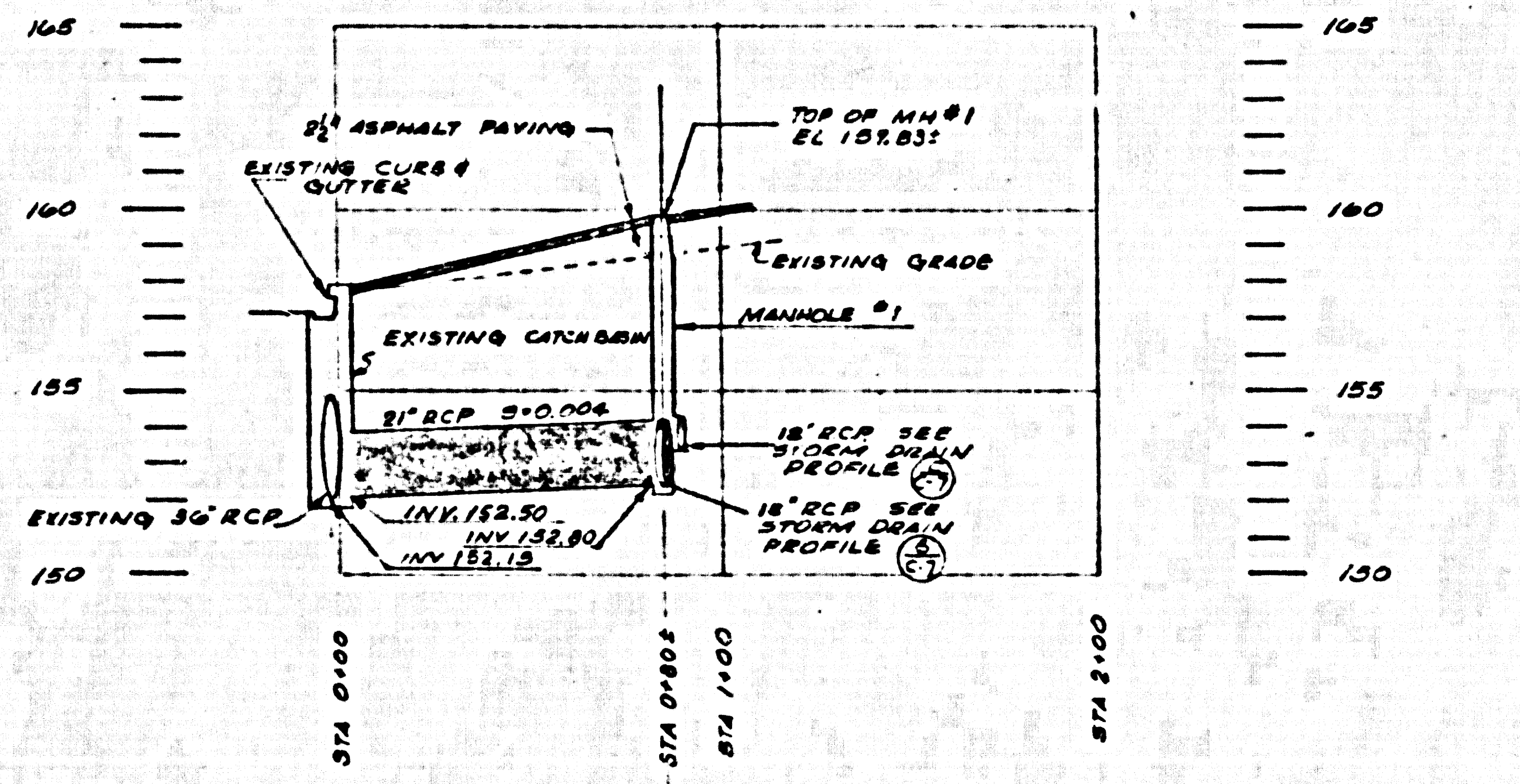
SCALE
HORIZ 1"=40'
VERT 1"=4'

B



SCALE
HORIZ 1"=40'
VERT 1"=4'

C



STORM DRAIN PROFILE

SCALE
HORIZ 1"=40'
VERT 1"=4'

D

Before work can be started, the contractor must obtain a permit to excavate from the County Engineer's Office, 100 South Broadway, Los Angeles, California. The permit shall be obtained from the County Engineer's Office, 100 South Broadway, Los Angeles, California. The permit shall be obtained from the County Engineer's Office, 100 South Broadway, Los Angeles, California. The permit shall be obtained from the County Engineer's Office, 100 South Broadway, Los Angeles, California.

Note:
No representative of the County Engineer will survey or layout any portion of this work. No assurance will be made in these plans without approval of the County Engineer.

Note:
Elevations are in feet above U. S. C. & G. S. Sea Level Datum of 1929. This Drawing and the data hereon are hereby made a part of the specifications for the work. Work shall be constructed in accordance with the specifications on file in the office of the County Engineer. It shall be prosecuted only in the presence of the County Engineer.

1. Use standard manhole frames and covers, S-117, except as noted.
2. Use standard strength pipe, except as noted.
3. Use cement mortar for all vitrified clay pipe joints.
4. Resurface all trench walls with pipe, except as noted. Angeles County Road Department's California State Highway Department, in accordance with permit.
5. Excavate four feet of sewer at points of intersection with poles as per S-119.
6. All structures shall be built in accordance with S-104, except as noted.
7. For allowable leakage use use Formula No. 1, Spec's, Ser. 54.

P E R E I R A & L U C K M A N
 P L A N N I N G . A R C H I T E C T U R E . E N G I N E E R I N G

APPROVED BY

 ARCHITECT

 ENGINEER C.E. # 7063
 OWNER

PROFILES OF SANITARY SEWER & STORM DRAIN
FIRESTONE PROJECT 839
 WASHINGTON BLVD. AND TELEGRAPH ROAD
 LOS ANGELES, CALIF.

JOB NO. 839
 PROJ. MGR. J. J. ...
 DESIGNER N. M. DONNELL
 JOB CAPT. E. DETTET
 DRAWN R. E. SPENCER
 CHECKED J. NEWMAN

DATE MAY 14, 1957

THE FIRESTONE TIRE & RUBBER CO.
 REAL ESTATE DIVISION
 2828 FIRESTONE BLVD.
 LOS ANGELES 54, CALIF. LUDLOW 3-4411

SHEET NO. 07

7-66-57 ADJUST SEWER GRADE
 ADD PIPE ENCASEMENT
 ALL AS PER L.A.CO.
 INSTRUCTIONS

LEGEND:
 (A-A) SECTION A-A
 (A-B) SHEET NO. A-B
 (A-7) DETAIL NO. A-7
 (A-7) SHEET NO. A-7