

LOMITA BLDG. DIST. NO. 71

PROFILE ALIGNMENT AND GRADE OF P.C. 4499
 SANITARY SEWERS PAGE 1
 TO BE CONSTRUCTED IN

A SANITARY SEWER RIGHT OF WAY WEST OF DOLORES STREET

PRIVATE CONTRACT NO. 4499

W.S. 28

1 SHEET, 2 PAGES

SCALE: HORIZ. 1" = 40' VERT. 1" = 4'

JULY, 1957

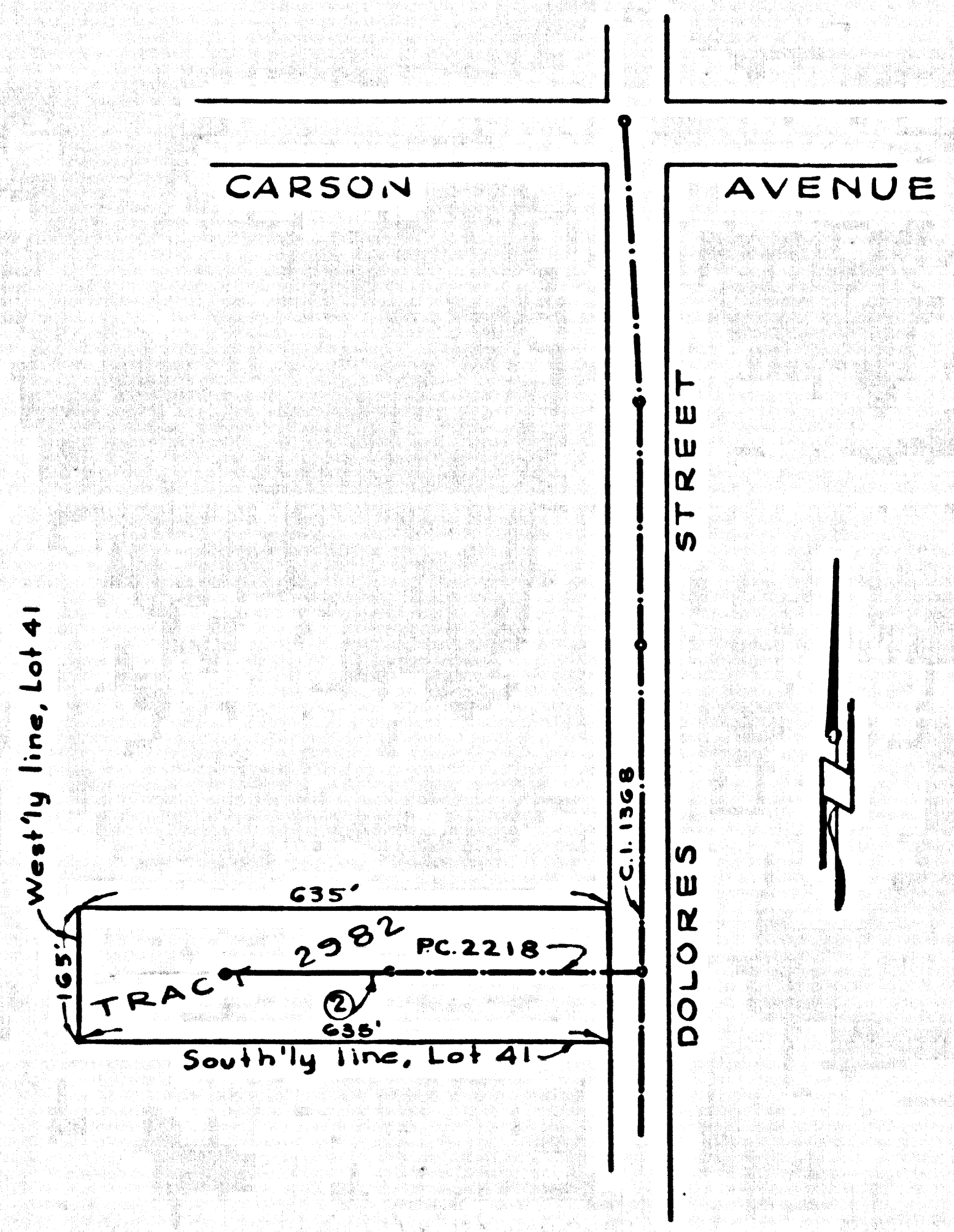
PREPARED IN THE OFFICES OF

BARCLAY ENGINEERING CO., INC.

By: Edward L. Pearson
 REG. C. E. NO. 2723

FOR LEGEND SEE PLAN NO. S-A-64

25117



INDEX MAP
 SCALE 1" = 200'
 P.C. 4499

- NOTE: PROVIDE STAKES ON THE PROPERTY LINE OR PROPERTY LINES PRODUCED AT RIGHT ANGLES TO THE SEWER LINE AT THE CENTER LINE OF EACH MANHOLE.
- NO REPRESENTATIVE OF THE COUNTY ENGINEER WILL SURVEY OR LAYOUT ANY PORTION OF THE WORK.
- THE OWNER OR HIS AUTHORIZED REPRESENTATIVE SHALL FURNISH THE COUNTY ENGINEER WITH GRADE SHEETS AND STATION FOR ALL HOUSE LATERALS AND T BRANCHES AND SHALL PROVIDE STAKES FOR THEM AT THEIR PROPER LOCATIONS WITH STATIONING PLAINLY MARKED. ANY CHANGE IN LOCATION SHALL BE REQUESTED IN WRITING BY THE OWNER OR HIS REPRESENTATIVE.
- NO REVISIONS SHALL BE MADE IN THESE PLANS WITHOUT THE APPROVAL OF THE COUNTY ENGINEER.
1. USE STANDARD MANHOLE FRAMES AND COVERS, S-A-117, EXCEPT AS NOTED.
 2. USE STANDARD STRENGTH PIPE EXCEPT AS NOTED.
 3. USE CEMENT MORTAR FOR ALL VITRIFIED CLAY PIPE JOINTS.
 4. RESURFACE ALL TRENCH WITHIN PAVED AREA TO MEET L. A. COUNTY ROAD DEPT., OR CALIF. STATE HIGHWAY DEPT. REQUIREMENTS IN ACCORDANCE WITH PERMITS.
 5. INCASE FOUR FEET OF SEWER AT POINTS OF INTERFERENCE WITH POLES, C.A.S.E. 22, S-A-172.
 6. HOUSE LATERALS TO BE CONSTRUCTED WITHIN RIGHTS-OF-WAY OF RESIDENTS AND SHALL BE CONSTRUCTED TO THE PROPERTY LINE UNLESS OTHERWISE NOTED.
 7. ALL STRUCTURES SHALL BE BRICK SEWER STRUCTURES, S-A-184, EXCEPT AS NOTED.
 8. FOR ALLOWABLE LEAKAGE TEST USE FORMULA NO. 1, C.P.C.E., SEC. 54.
 9. MANHOLE TOPS IN UNIMPROVED RIGHTS-OF-WAY TO BE 6" ABOVE FINISHED GRADE.
 10. THE INDICATION OR OMISSION OF EXISTING SUBSTRUCTURES SHALL IN NO WAY RELIEVE THE CONTRACTOR FROM THE RESPONSIBILITY OF VERIFYING AND LOCATING SUBSTRUCTURES.

NOTE: THE CONTRACTOR SHALL NOTIFY THE CONSTRUCTION & STORM DRAIN DIVISION BY TELEPHONE, MADISON 94747, EXT. 562, AT LEAST 24 HOURS BEFORE STARTING ANY WORK UNDER THIS CONTRACT.

B.M. - DO 4 Elev. = 30.314
 Co. Eng. Field Book 1438 pg. 9
 Dolores Street West Side, 110' south of Carson.
 Boat spike in center of conc. wall at bottom step to house.
 No. 21709.

NOTE: GRADES TO WHICH THIS IMPROVEMENT IS TO BE CONSTRUCTED ARE SHOWN ON PLANS AND PROFILES. GRADE POINTS FOR TOP OF CURB, CENTER LINE OF STREET, OR CENTER LINE OF ALLEYS ARE SHOWN BY CIRCLES ON PROFILES AT ALL POINTS BETWEEN DESIGNATED POINTS THE GRADE SHALL BE ESTABLISHED SO AS TO COMFORM TO A STRAIGHT LINE DRAWN BETWEEN SAID DESIGNATED POINTS.

ELEVATIONS ARE IN FEET ABOVE U.S.C. & G.S. SEA LEVEL DATUM OF 1929.

THIS DRAWING AND THE DATA HEREON ARE HEREBY MADE A PART OF THE SPECIFICATIONS.

WORK SHALL BE CONSTRUCTED ACCORDING TO SPECIFICATIONS ON FILE IN THE OFFICE OF THE COUNTY ENGINEER AND SHALL BE PROSECUTED ONLY IN THE PRESENCE OF THE COUNTY ENGINEER.

BEFORE WORK CAN BE STARTED, THE CONTRACTOR MUST OBTAIN A PERMIT TO EXCAVATE IN COUNTY STREETS FROM THE L. A. COUNTY ROAD DEPT., 108 W. 2ND ST. AND MAKE A DEPOSIT WITH THE COUNTY ENGINEER, ROOM 204 PLAN AMERICAN BUILDING, 133 SO. BROADWAY SUFFICIENT TO COVER THE COST OF CONSTRUCTION INSURANCE AND RECORD PLANS.

APPROVAL OF THIS PLAN BY THE COUNTY OF LOS ANGELES DOES NOT CONSTITUTE A REPRESENTATION AS TO THE ACCURACY OF THE LOCATION OR THE EXISTENCE OR NON-EXISTENCE OF ANY UNDERGROUND UTILITY PIPE, OR STRUCTURE WITHIN THE LIMITS OF THIS PROJECT. THIS NOTE APPLIES TO ALL PAGES.

IF WORK IS TO BE DONE IN A STATE HIGHWAY, A PERMIT MUST BE OBTAINED FROM THE STATE OF CALIFORNIA, DIVISION OF HIGHWAYS, 130 SOUTH SPRING STREET.

COUNTY OF LOS ANGELES, CALIFORNIA

APPROVED, JOHN A. LAMBE, COUNTY ENGINEER

APPROVED, A. M. BAWN, CHIEF ENGINEER

By: *E. L. Hughes*
 SANITATION ENGINEER

By: *J. P. ...*
 CIVIL ENGINEER

CHECKED BY: *W. W. ...*
 OFFICE OF COUNTY ENGINEER, BOX C. E. NO. 3466

NO CHARGE FOR CONNECTIONS
 P.C. 4499

REVISION
 DELETION OF 130' OF M.L.E.
 Deleted by *W. W. ...* 10/4/57

P.C. 4499 PAGE 2

25118

NO CHARGE FOR CONNECTIONS

