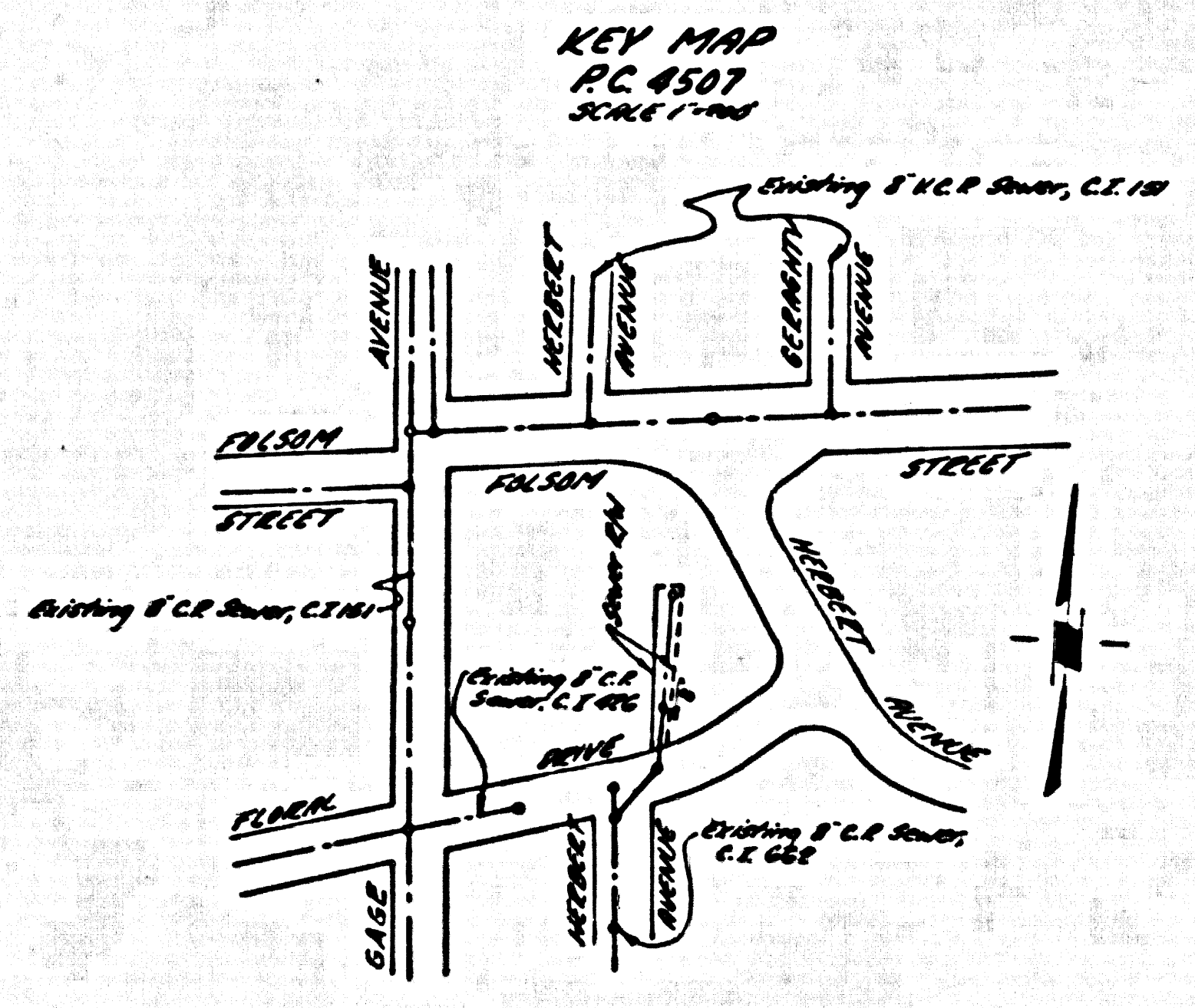


EAST LOS ANGELES BLDG. DIST. NO. 6

PROFILE ALIGNMENT AND GRADE OF
SANITARY SEWERS P.C. 4507
 TO BE CONSTRUCTED IN PAGE 1
FLORAL DRIVE
HERBERT AVENUE (25,293)
 PRIVATE CONTRACT NO. 4507

- NOTES:
- PROVIDE STAKES ON THE PROPERTY LINE OR PROPERTY LINE PRODUCED AT RIGHT ANGLES TO THE SEWER LINE AT THE CURVE END OF EACH BAY-WEED.
 - NO DIMENSIONS OF THE COUNTY ENGINEER WILL BE GIVEN OR LAYED OUT PORTION OF THE WORK.
 - THE OWNER OR HIS AUTHORIZED REPRESENTATIVE SHALL FURNISH THE COUNTY ENGINEER WITH GRADE SHEETS AND STATION FOR ALL HOUSE LATERALS AND Y BRANCHES AND SHALL PROVIDE STAKES FOR THEM AT THEIR PROPER LOCATIONS WITH STATION AND PLAINLY MARKED. ANY CHANGE IN LOCATION SHALL BE REQUESTED BY THE OWNER OR HIS REPRESENTATIVE.
 - NO REVISIONS SHALL BE MADE IN THESE PLANS WITHOUT THE APPROVAL OF THE COUNTY ENGINEER.
 - USE STANDARD MANHOLE FRAMES AND COVERS, S.A.-117, EXCEPT AS NOTED.
 - USE STANDARD MANHOLE PIPE EXCEPT AS NOTED.
 - USE STANDARD MANHOLE FOR ALL VENTING CLAY PIPE JOINTS.
 - REPLACE ALL BRICKS WITHIN RAVINE AREA TO WITH L.A. COUNTY ROAD DEPT., LA. CASH. STATE HIGHWAY DEPT. BRICKS. BRICKS IN ACCORDANCE WITH SPECIFICATIONS.
 - BRICKS FOUR FEET OF SEWER AT POINTS OF INTERFERENCE WITH POLES, S.A.-177E CASE #1.
 - ALL STRUCTURES SHALL BE BUILT SEWER STRUCTURES, S.A.-117, EXCEPT AS NOTED.
 - FOR ALLOWABLE MESSAGE TEST USE FORMULA NO. 1, S.P.C.E., SEC. 64.
 - MANHOLE TONS IN UNAPPROVED SHORTS-OF-WAY TO BE 6" ABOVE FINISHED GRADE.

W.S. 7N
 1 SHEETS, 2 PAGES
 SCALE: HORIZ. 1" = 40' VERT. 1" = 4'
 OCTOBER, 1957
 PREPARED IN THE OFFICES OF
NATIONAL ENGINEERING COMPANY
 BY Edmund J. Enos
 REG. E. E. NO. 511
 FOR LEGEND SEE PLAN NO. S-A-64



NOTE:
 THE CONTRACTOR SHALL NOTIFY THE CONSTRUCTION AND STORAGE DRAIN DIVISION BY TELEPHONE, MADISON 9-4747, EXT. 362, AT LEAST 24 HOURS BEFORE STARTING ANY WORK UNDER THIS CONTRACT.

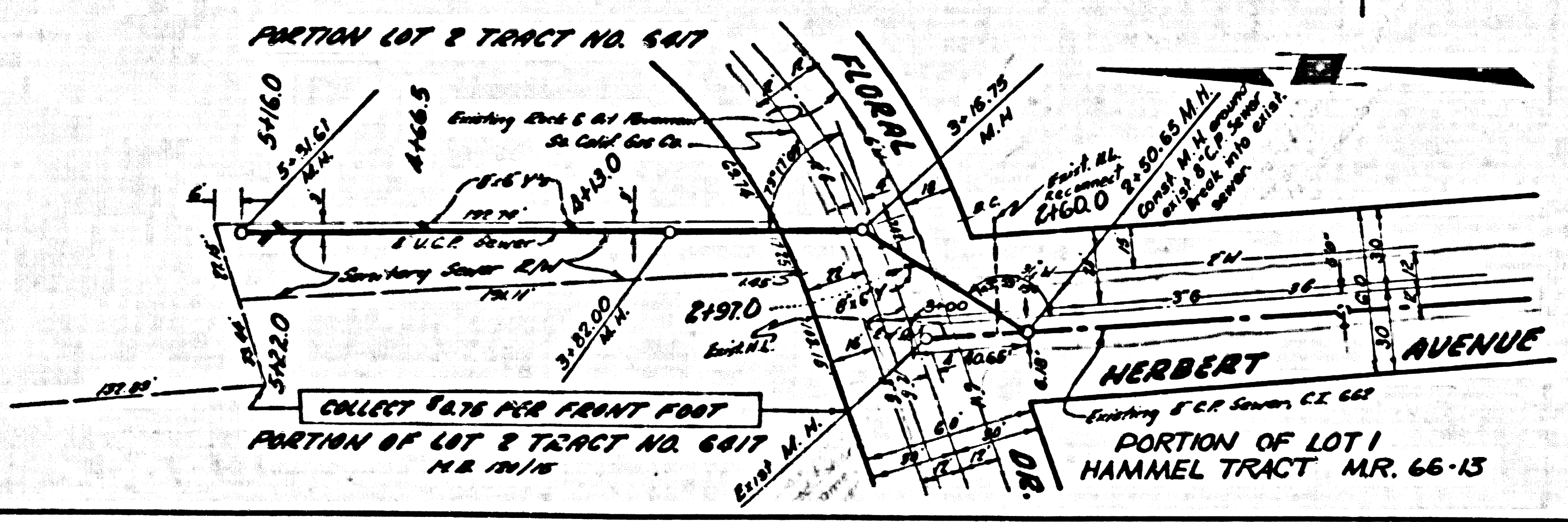
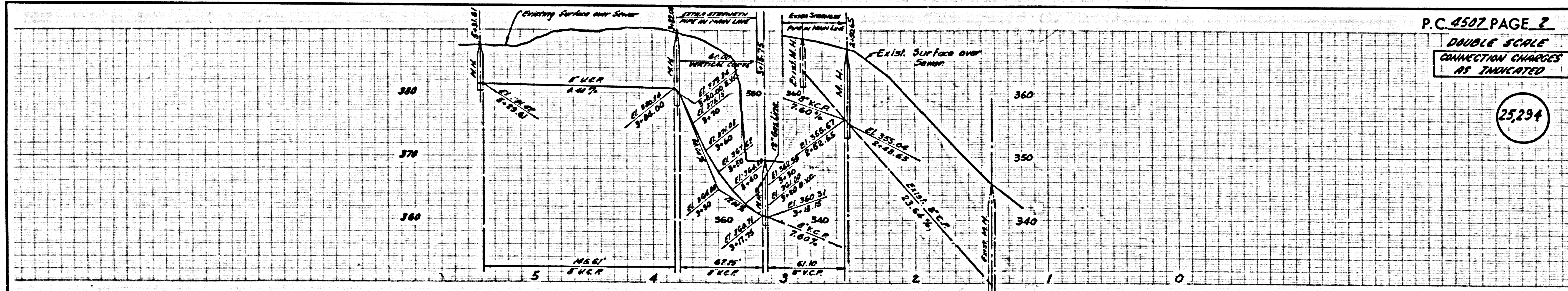
BENCH MARK: L.A. Co. Rd. Dept. ARZ-381-77 4.67 in center curb return S.E. Cor. Floral Drive & Gage Ave.
 ELEV. 347.30

CONNECTION CHARGES AS INDICATED
 L. Carter 10-17-57

NOTES:
 GRADES TO WHICH THIS IMPROVEMENT IS TO BE CONSTRUCTED ARE SHOWN ON PLANS AND PROFILES. GRADE POINTS FOR TOP OF CURB, CENTER LINE OF STREETS, OR CENTER LINE OF ALLEYS ARE SHOWN BY CIRCLES ON PROFILES. AT ALL POINTS BETWEEN DESIGNATED POINTS THE GRADE SHALL BE ESTABLISHED SO AS TO CONFORM TO A STRAIGHT LINE DRAWN BETWEEN SAID DESIGNATED POINTS.
 ELEVATIONS ARE IN FEET ABOVE U.S.C. & G.S. MEAN SEA LEVEL.
 THE SEWERING AND THE DATA HEREON ARE HEREBY MADE A PART OF THE SPECIFICATIONS.
 THESE SHALL BE CONSIDERED ACCORDING TO SPECIFICATIONS ON FILE IN THE OFFICE OF THE COUNTY ENGINEER AND SHALL BE PROVIDED ONLY IN THE PRESENCE OF THE COUNTY ENGINEER.
 SEWER WORK SHALL BE CONSIDERED AS COMPLETE A REPORT TO RECEIPT BY COUNTY ENGINEER UNDER THE L.A. COUNTY ROAD DEPT. 100 W. 2ND ST. AND MAKE A REPORT WITH THE COUNTY ENGINEER, ROOM 304 MAIN AMERICAN BLDG. 215 N. HOUSTON STREET TO COVER THE COST OF CONSTRUCTION INSPECTION AND ACCEPTANCE.
 APPROVAL OF THIS PLAN BY THE COUNTY OF LOS ANGELES DOES NOT CONSTITUTE A REPRESENTATION AS TO THE ACCURACY OF THE LOCATION OF OR THE EXISTENCE OR NON-EXISTENCE OF ANY UNDERGROUND UTILITY PIPE OR STRUCTURE WITHIN THE LIMITS OF THIS PROJECT. THIS NOTE APPLIES TO ALL PAGES.
 IF WORK IS TO BE DONE IN A STATE HIGHWAY, A PERMIT MUST BE OBTAINED FROM THE STATE OF CALIFORNIA, DIVISION OF HIGHWAYS, 120 SOUTH SPRING STREET.

COUNTY OF LOS ANGELES, CALIFORNIA
 APPROVED, JOHN A. LAMME, COUNTY ENGINEER
 APPROVED, A. H. BAYNE, CHIEF ENGINEER
 BY Edmund J. Enos BY A. H. Bayne
 SANITATION ENGINEER OFFICE ENGINEER
 CHECKED BY Edmund J. Enos 10-17-57
 OFFICE OF COUNTY ENGINEER, REG. E. E. NO. 32016

P.C. 4507 PAGE 2
 DOUBLE SCALE
 CONNECTION CHARGES AS INDICATED
 (25,294)



P.C. 4507
 250655 DRIVE