

TEMPLE CITY BLDG. DIST. NO. 5

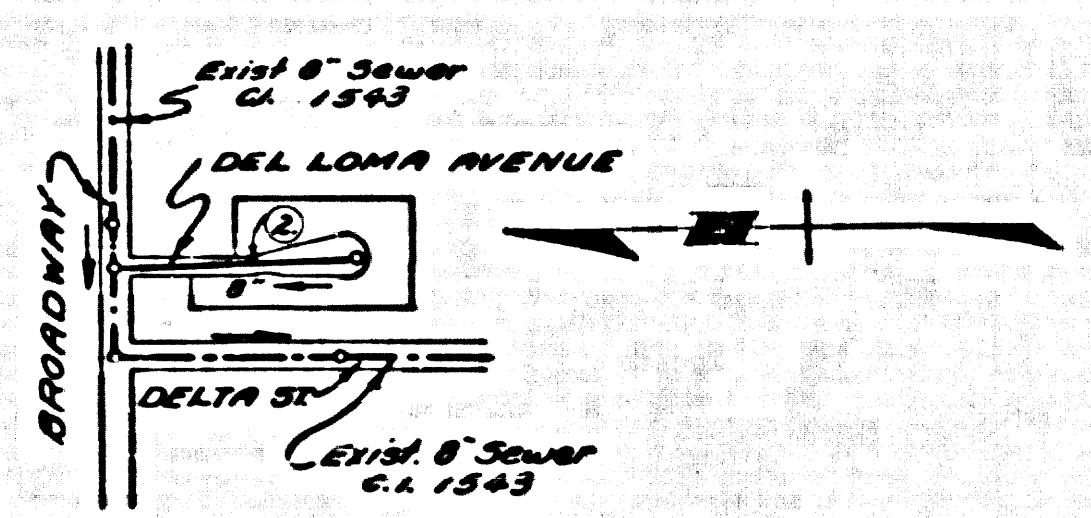
PROFILE ALIGNMENT AND GRADE OF P.C. 4514
 SANITARY SEWERS PAGE 1
 TO BE CONSTRUCTED IN
TRACT No 20364

PRIVATE CONTRACT NO. 4514
 W.S. 44
 1 SHEET 2 PAGES

SCALE: HORIZ. 1" = 40' VERT. 1" = 4'
 JULY 1957
 PREPARED BY THE OFFICES OF

TREADWELL ENGINEERING CORPORATION
 W.A. Treadwell
 REC. E. NO. 412
 FOR LEGEND SEE PLAN NO. S-A-64

25,166



INDEX MAP
 Scale 1" = 500'
 TRACT No 20364
 P.C. 4514

B.M. 50.679 Elev. 328.600
 Broadway & Walnut Grove S.W. Cor.
 4.97' in width 307.3' of Broadway
 1/32' M. of E. of Walnut Grove.

NO CHARGE FOR CONNECTIONS
 L. Curtis 7/15/57

DO NOT ISSUE HOUSE SEWER PERMIT UNTIL TRACT 20364 IS RECORDED.

- NOTES
- PROVIDE GRADES ON THE PROPERTY LINE OR PROPERTY LINES PRODUCED AT RIGHT ANGLES TO THE SEWER LINE AT THE CENTER LINE OF EACH MANHOLE.
 - NO REPRESENTATIVE OF THE COUNTY ENGINEER WILL REVIEW OR LAYOUT ANY PORTION OF THE WORK.
 - THE OWNER OR HIS AUTHORIZED REPRESENTATIVE SHALL FURNISH THE COUNTY ENGINEER WITH GRADE SHEETS AND STATION FOR ALL HOUSE LATERALS AND Y BRANCHES AND SHALL PROVIDE STAKES FOR THESE AT THESE LOCATIONS WITH STATIONS AND PLANNED GRADES. ANY CHANGE IN LOCATION SHALL BE REPORTED IN WRITING BY THE OWNER OR HIS REPRESENTATIVE.
 - NO REVISIONS SHALL BE MADE IN THESE PLANS WITHOUT THE APPROVAL OF THE COUNTY ENGINEER.
 - USE STANDARD MANHOLE FRAMES AND COVERS, 6-11", EXCEPT AS NOTED.
 - USE STANDARD STRENGTH PIPE EXCEPT AS NOTED.
 - USE CHAMBER SHORTS FOR ALL UNBURNED CLAY PIPE JOINTS.
 - REINFORCE ALL TRENCHES WITHIN PAVED AREAS TO MEET L.A. COUNTY ROAD DEPT., OR CALIF. STATE HIGHWAY DEPT. REQUIREMENTS IN ACCORDANCE WITH PERMITS.
 - INDICATE FOUR FEET OF SEWER AT POINTS OF INTERFERENCE WITH POLES, S.A. 119.
 - HOUSE LATERALS TO BE CONSTRUCTED WITH 1/2" RISE PER FOOT TO PROPERTY LINE.
 - ALL STRUCTURES SHALL BE BUILT EXCEPT STRUCTURES, S.A. 108, EXCEPT AS NOTED.
 - FOR APPROXIMATE SIZES USE FORMULA 1000 / (SLOPE) SPECT. SEC. 574.
 - MANHOLE JOINTS IN UNIMPROVED RIGHTS-OF-WAY TO BE 6" ABOVE FINISHED GRADE.
 - THE PRIVATE ENGINEER IS TO FURNISH THE HOUSE LATERAL DEPTH AT THE PROPERTY LINE BELOW THE TOP OF CURB ELEVATION FOR EACH HOUSE LATERAL, ON THE BROADWAY SHEET.
 - THE CONTRACTOR SHALL NOTIFY THE CONSTRUCTION AND STORM DRAIN DIVISION BY TELEPHONE MADISON 3-3747 P.M. 3 P.M. AT LEAST 24 HOURS BEFORE STARTING ANY WORK UNDER THIS CONTRACT.

NOTES

GRADES TO WHICH THIS IMPROVEMENT IS TO BE CONSTRUCTED ARE SHOWN ON PLANS AND PROFILE GRADE POINTS FOR TOP OF CURB, CENTER LINE OF STREETS, OR CENTER LINE OF ALLEYS ARE SHOWN BY CIRCLES ON PROFILES AT ALL POINTS BETWEEN DESIGNATED POINTS THE GRADE SHALL BE ESTABLISHED SO AS TO CONFORM TO A STRAIGHT LINE BETWEEN SAID DESIGNATED POINTS.

REVISIONS ARE IN RED AND/OR U.S.C. AND/OR S.A. 119. APPROVED OFFICIALS SHALL SIGN AND DATE THIS DRAWING AND THE DATA HEREON AND REVISIONS AS PART OF THE SPECIFICATIONS.

NOISE SHALL BE CONSIDERED ACCORDING TO SPECIFICATIONS ON FILE IN THE OFFICE OF THE COUNTY ENGINEER AND SHALL BE INCLUDED ONLY IN THE PRESENCE OF THE COUNTY ENGINEER.

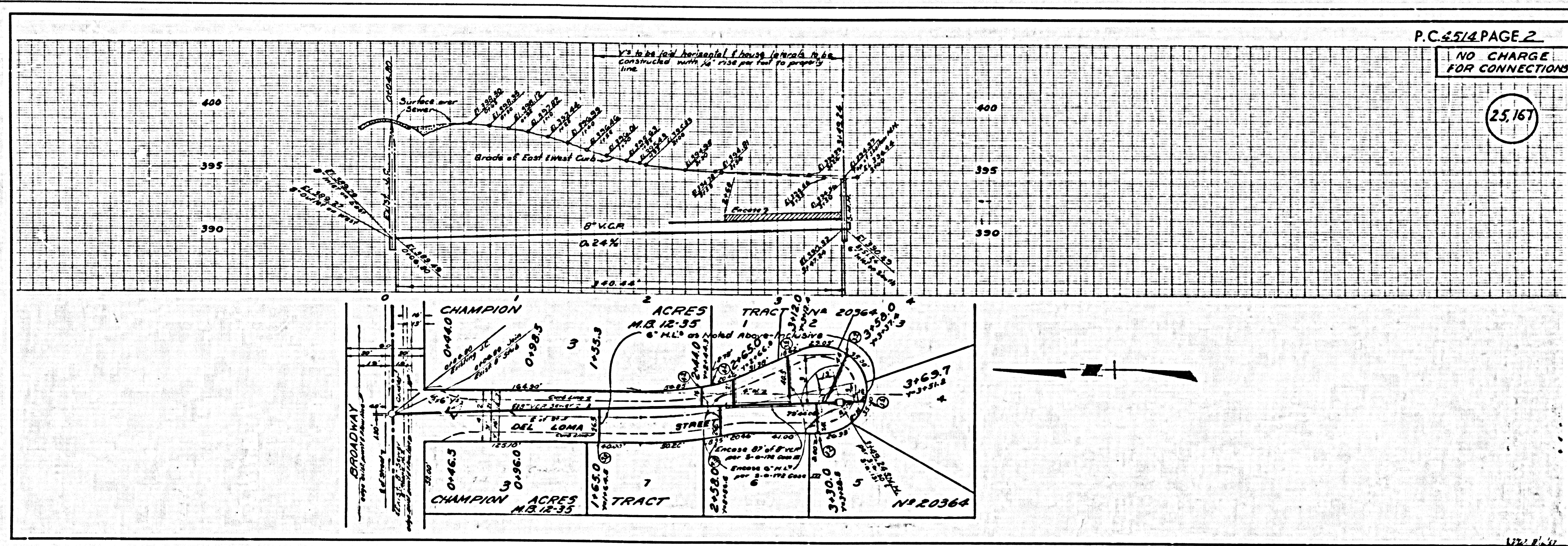
A REPORT TO BE OBTAINED IN COUNTY OFFICE FROM THE L.A. COUNTY ROAD DEPT. 100' BY 20' BY 20' AND MAKE A DEPOSIT WITH THE COUNTY ENGINEER, ROOM 204 MAIN AMERICAN BLDG. 312 50' IN ADVANCE TO COVER THE COST OF CONSTRUCTION INSPECTION AND RECORD PLANS.

APPROVAL OF THIS PLAN BY THE COUNTY OF LOS ANGELES DOES NOT CONSTITUTE A REPRESENTATION AS TO THE ACCURACY OF THE LOCATION OF OR THE EXISTENCE OR NON-EXISTENCE OF ANY UNDERGROUND UTILITY PIPE OR STRUCTURE WITHIN THE LIMITS OF THIS PROJECT. THE NOTE APPLIES TO ALL PAGES.

IF WORK IS TO BE DONE IN A STATE HIGHWAY, A PERMIT MUST BE OBTAINED FROM THE STATE OF CALIFORNIA, DIVISION OF HIGHWAYS, THE SOUTH BAY AREA.

COUNTY OF LOS ANGELES, CALIFORNIA

APPROVED, JOHN A. LAMBE, COUNTY ENGINEER
 APPROVED, A. M. SAWYER, CHIEF ENGINEER
 W. A. Treadwell
 LAMBE
 CHECKED BY: W. A. Treadwell 10-1-57
 OFFICE OF COUNTY ENGINEER, 300 S. W. 2nd St.



P.C. 4514 PAGE 2

NO CHARGE FOR CONNECTIONS

25,167