

TEMPLE CITY BLDG. DIST. NO. 5

PROFILE ALIGNMENT AND GRADE OF P.C. 4515  
 SANITARY SEWERS PAGE 1  
 TO BE CONSTRUCTED IN

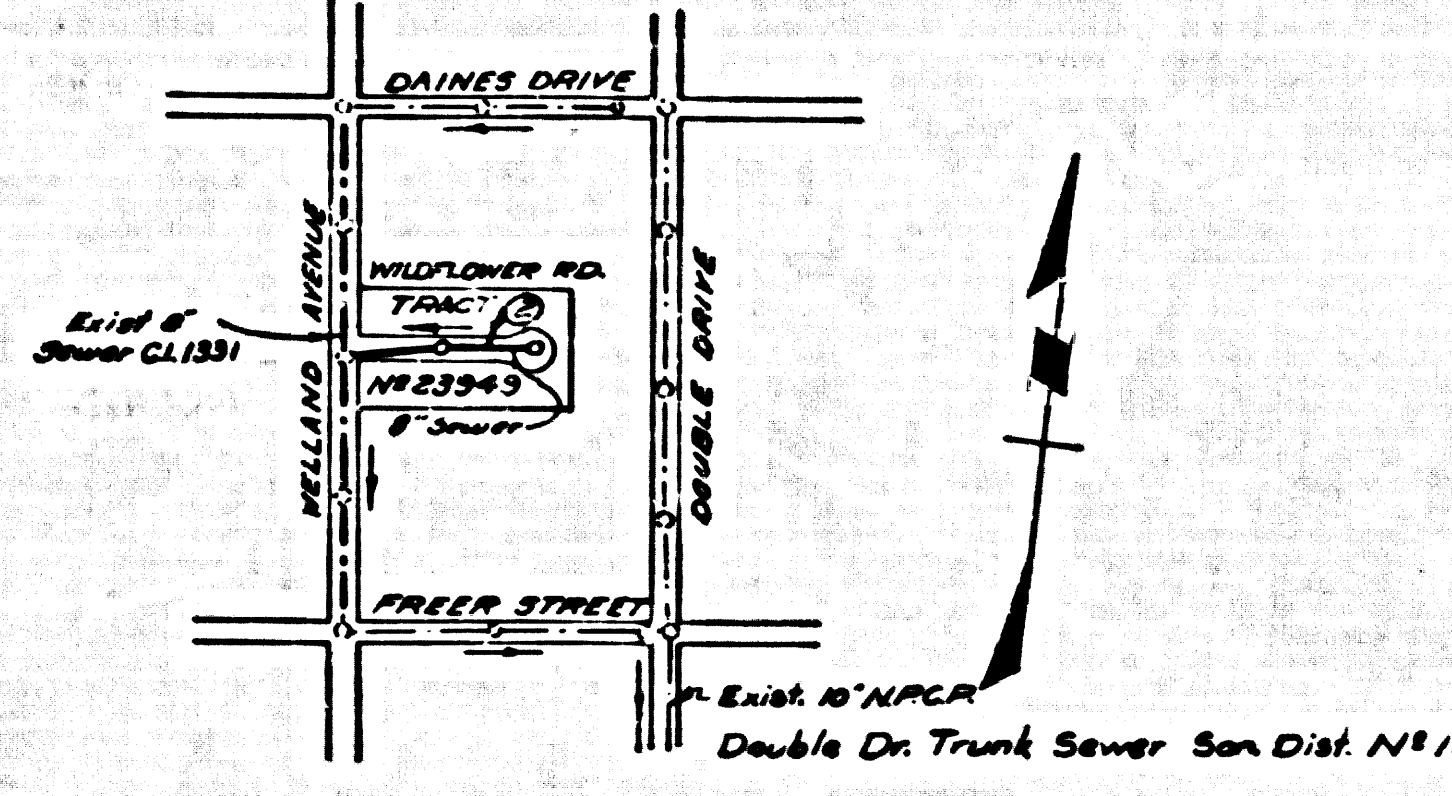
TRACT No 23949 (25279)

PRIVATE CONTRACT NO. 4515

W.S. 46  
 1 SHEET 2 PAGES  
 SCALE: 1" = 40' JULY 22, 1957

PREPARED IN THE OFFICES OF  
 TREADWELL ENGINEERING CORPORATION

W.A. Treadwell  
 CIVIL ENGINEER  
 FOR LEGEND SEE PLAN NO. S-4-64



INDEX MAP  
 Scale 1" = 500'  
 TRACT No 23949  
 P.C. 4515

B.M. 5G.302 EL. 352.328  
 Welland & Live Oak  
 304.85' West of Curve Return  
 of S of Cor. Welland and  
 Live Oak

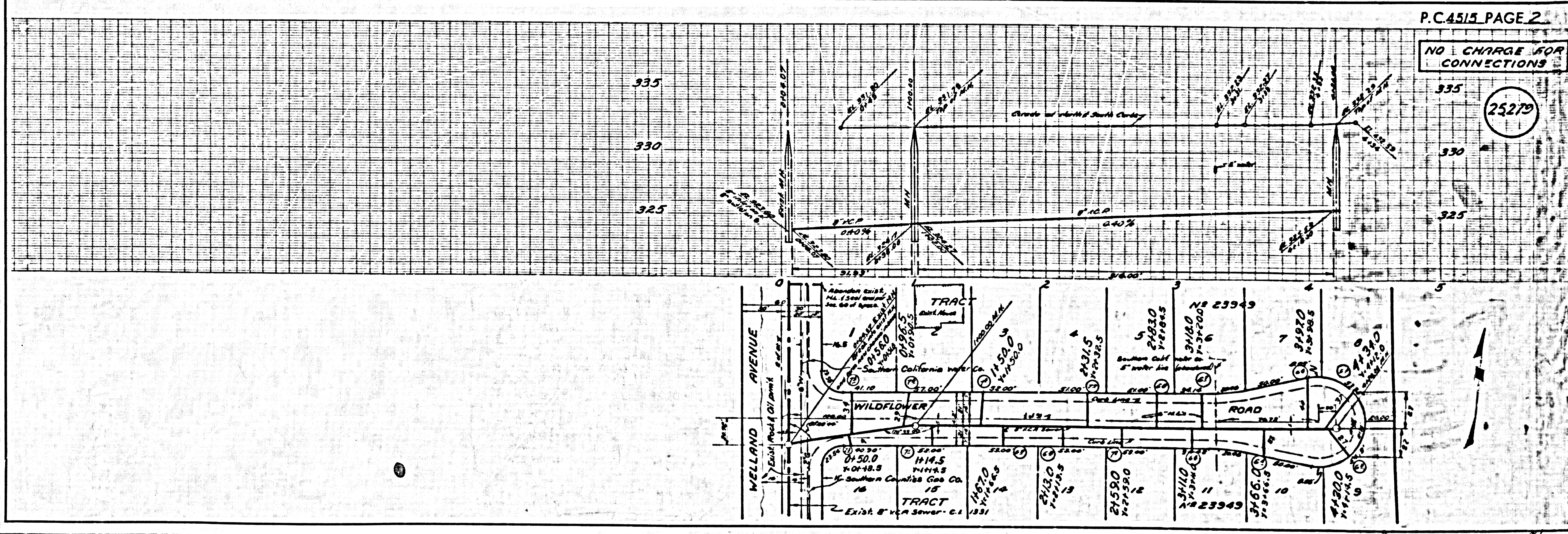
NO CHARGE  
 FOR CONNECTIONS  
 See Section 9-13-57

- NOTES:
- PROVIDE STAKES ON THE PROPERTY LINE OR PROPERTY LINES PRODUCED AT RIGHT ANGLES TO THE SEWER LINE AT THE CORNER AND AT EACH MANHOLE.
  - NO REPRESENTATIVE OF THE COUNTY ENGINEER WILL SURVEY OR LAYOUT ANY PORTION OF THE WORK.
  - THE OWNER OR HIS AUTHORIZED REPRESENTATIVE SHALL FURNISH THE COUNTY ENGINEER WITH BEARING AND STATION FOR ALL HOUSE LATERALS AND BRANCHES AND SHALL PROVIDE STAKES FOR THEM AT THEIR PROPER LOCATIONS WITH STATION AND PLAINLY MARKED. ANY CHANGE IN LOCATION SHALL BE REQUESTED IN WRITING BY THE OWNER OR HIS REPRESENTATIVE.
  - NO IMPROVEMENTS SHALL BE MADE IN THESE PLANS WITHOUT THE APPROVAL OF THE COUNTY ENGINEER.
  - USE STANDARD MANHOLE FRAMES AND COVERS, S.A.117, EXCEPT AS NOTED.
  - USE STANDARD STRUTS AND BRACES EXCEPT AS NOTED.
  - USE CEMENT MORTAR FOR ALL VITRIFIED CLAY PIPE JOINTS.
  - REINFORCE ALL TRENCH WITHIN PAVED AREA TO MEET L. & COUNTY ROAD DEPT., OR CALIF. STATE HIGHWAY DEPT. REQUIREMENTS BY ACCORDANCE WITH PERMITS.
  - INCASE FOUR FEET OF SEWER AT POINTS OF INTERFERENCE WITH POLES, CASE 22, S. 8-172
  - HOUSE LATERALS TO BE CONSTRUCTED WITH 1/2" BULK PER FT. TO PROPERTY LINE.
  - ALL STRUCTURES SHALL BE SINCE SEWER STRUCTURES, S.A.184, EXCEPT AS NOTED.
  - FOR MANHOLE DEPT. USE THE FORMULA NO. 1, SPEC. SEC. 86
  - MANHOLE TOPS IN UNIMPROVED AREAS SHALL BE 6" ABOVE FINISHED GRADE.
  - The private engineer is to furnish the house lateral depth of the property line below the top of curb structure for each house lateral, on the ground sheet.

NOTE:  
 THE CONTRACTOR SHALL NOTIFY THE CONSTRUCTION AND STORM DRAIN DIVISION BY TELEPHONE, MADISON 8-4747, EXT. 362, AT LEAST 24 HOURS BEFORE STARTING ANY WORK UNDER THIS CONTRACT.

NOTES:  
 SEWERS TO WHICH THIS IMPROVEMENT IS TO BE CONSTRUCTED ARE SHOWN ON PLANS AND PROFILES. OTHER SEWERS FOR 100' ON CURB, CENTER LINE OF STREET, OR CENTER LINE OF ALLEY ARE SHOWN BY CIRCLES ON PROFILES AT ALL POINTS BETWEEN SEWERED PORTIONS. COUNTY THE SEWER SHALL BE ESTABLISHED SO AS TO CONTINUE TO A SEWERAGE LINE BEARING THEREON. SEWER MATERIALS SHALL BE PER SPEC. S.E.C. AND S.E. DEPT. SPEC. S.E.C. 86. ALL SEWER LATERALS AND BRANCHES SHALL BE CONSTRUCTED ACCORDING TO SPECIFICATIONS ON THE OFFICE OF THE COUNTY ENGINEER AND SHALL BE PROTECTED ONLY BY THE PROVISIONS OF THE COUNTY ENGINEER. BEFORE WORK CAN BE STARTED, THE CONTRACTOR MUST OBTAIN A PERMIT TO INCASE IN CONDUIT RIGHTS FROM THE L. & COUNTY ROAD DEPT. USE BY THE CITY AND COUNTY ENGINEER. BEFORE THE COUNTY ENGINEER SHALL BE THE AMERICAN ROAD AND 330 SO. BROADWAY SUFFICIENT TO COVER THE COST OF CONSTRUCTION INSPECTION AND RECORD PLANS. APPROVAL OF THIS PLAN BY THE COUNTY OF LOS ANGELES DOES NOT CONSTITUTE A REPRESENTATION AS TO THE ACCURACY OF THE LOCATION OF OR THE EXISTENCE OF ANY UNDERGROUND UTILITY PIPE, OR STRUCTURE WITHIN THE LIMITS OF THIS PROJECT. THIS NOTE APPLIES TO ALL PAGES. IF WORK IS TO BE DONE IN A STATE HIGHWAY, A PERMIT MUST BE OBTAINED FROM THE STATE OF CALIFORNIA, DIVISION OF HIGHWAYS, 120 SOUTH BRIDGE STREET.

COUNTY OF LOS ANGELES, CALIFORNIA  
 APPROVED, JOHN A. IANBIE, COUNTY ENGINEER  
 APPROVED, A. M. BAYNE, CHIEF ENGINEER  
 W.A. Treadwell  
 CIVIL ENGINEER  
 CHECKED BY: S.K. Williams  
 CIVIL ENGINEER  
 OFFICE OF COUNTY ENGINEER, 800 S. G. & W. 3456



P.C. 4515 PAGE 2

NO CHARGE FOR CONNECTIONS

(25279)