

SAN DIMAS BLDG. DIST. NO. 10

- NOTES:
1. PROFILE STAKES ON THE PROPERTY LINE OR PROPERTY LINES PRODUCED AT RIGHT ANGLES TO THE SEWER LINE AT THE CORNER LINE OF EACH MAINLINE.
 2. THE ADJACENT PARTS OF THE COUNTY ENGINEER'S THIS SHEET ON LATERAL AND POSITION OF THE SEWER.
 3. THE SYSTEM ON THE ADJACENT PROPERTY SHALL BE THE COUNTY ENGINEER'S WITH SEWER SHUTS AND STATION FOR ALL HOUSE LATERALS AND BRANCHES AND SHALL PROVIDE STAKES FOR THEM AT THEIR PROPER LOCATIONS WITH STATIONING AND PLANTING MARKS. ANY CHANGE IN LOCATION SHALL BE REQUESTED BY WRITING BY THE OWNER OR HIS REPRESENTATIVE.
 4. NO SEWERAGE SHALL BE MADE IN THESE PLANS WITHOUT THE APPROVAL OF THE COUNTY ENGINEER.
 5. USE STANDARD BRASSWARE AND COVING, S.A.-117, EXCEPT AS NOTED.
 6. USE COMPANY SPECIFICATIONS FOR ALL VITRIFIED CLAY PIPE JOINTS.
 7. REINFORCE ALL TRENCHES WITHIN PAVED AREA TO MEET L.A. COUNTY ROAD DEPT. OR CALIF. STATE HIGHWAY DEPT. SPECIFICATIONS IN ACCORDANCE WITH PLANS.
 8. DISCARD FOUR FEET OF SEWER AT POINTS OF INTERFERENCE WITH POLES, CARS, ETC., 8'-0" MIN.
 9. HOUSE LATERALS TO BE CONSTRUCTED WITH INVERTS AT PROPERTY LINE. SEE PLAN FOR CURB GRADE EXCEPT AS NOTED.
 10. ALL STRUCTURES SHALL BE BUILT WITH STRUCTURAL S.A.-117 EXCEPT AS NOTED.
 11. FOR ALLOWABLE DEVIATIONS SEE S.A.-117, SPEC. L, SEC. 8A.
 12. SEWERAGE TO BE IN UN-PAVED AREAS TO BE 6" ABOVE FINISHED GRADE.
 13. THE PRIVATE ENGINEER SHALL FURNISH THE HOUSE LATERAL DEPTH AT THE PROPERTY LINE BELOW THE TOP-OF-CURB ELEVATION FOR EACH HOUSE LATERAL ON THE GRADE SHEET.

NOTES:
THE CONTRACTOR SHALL NOTIFY THE CONSTRUCTION & STORM DRAIN DIVISION BY TELEPHONE, MADISON 9-4747, EXT. 303, AT LEAST 48 HRS., BEFORE STARTING ANY WORK UNDER THIS CONTRACT.

CONNECTION CHARGES AS INDICATED
L. Curtis 10-24-57

PROFILE ALIGNMENT AND GRADE OF P.C. 4517
SANITARY SEWERS PAGE 1

TRACT No 16565 (25,630)

PRIVATE CONTRACT NO. 4517

W.S. 48
3 SHEETS, 8 PAGES
SCALE: HORIZ. 1"=40' VERT. 1"=4'
JULY 1957

PREPARED IN THE OFFICES OF
TED M. WALSH AND ASSOCIATES INC.
Ted M. Walsh
REG. C.E. NO. 6372

FOR LEGEND SEE PLAN NO. S-A-64

SEWER FOR WHICH THIS IMPROVEMENT IS TO BE CONSTRUCTED ARE SHOWN ON PLANS AND PROFILES. GRADE POINTS FOR TOP OF CURB, CENTER LINE OF STREETS, OR CENTER LINE OF ALLEYS ARE SHOWN BY CIRCLES ON PROFILES AT ALL POINTS WITH ELEVATIONS. POINTS THE GRADE SHALL BE DETERMINED BY AN INSTRUMENT AND THE SEWER SHALL BE GRADED BETWEEN SAID GRADE POINTS.

SEWERAGE AND THE DATA HEREON ARE HEREBY MADE A PART OF THE SPECIFICATIONS. BEFORE WORK CAN BE STARTED THE CONTRACTOR MUST OBTAIN A PERMIT TO EXCAVATE IN THE COUNTY ENGINEER'S AND SHALL BE PROSECUTED ONLY IN THE PRESENCE OF THE COUNTY ENGINEER.

BEFORE WORK CAN BE STARTED THE CONTRACTOR MUST OBTAIN A PERMIT TO EXCAVATE IN THE COUNTY ENGINEER'S AND SHALL BE PROSECUTED ONLY IN THE PRESENCE OF THE COUNTY ENGINEER.

THE COUNTY ENGINEER'S APPROVAL OF THIS PLAN BY THE COUNTY OF LOS ANGELES DOES NOT CONSTITUTE A REPRESENTATION AS TO THE ACCURACY OF THE LOCATION OF OR THE EXISTENCE OR NON-EXISTENCE OF ANY UNDERGROUND BRITTY PIPE, OR STRUCTURE BEING THE SUBJECT OF THIS PROJECT AND THE CONTRACTOR SHALL BE RESPONSIBLE FOR THE LOCATION OF ANY SUCH STRUCTURE.

IF WORK IS TO BE DONE BY A STATE HIGHWAY, A PERMIT MUST BE OBTAINED FROM THE STATE OF CALIFORNIA, DIVISION OF HIGHWAYS, 120 SOUTH FINE STREET, SACRAMENTO, CALIF.

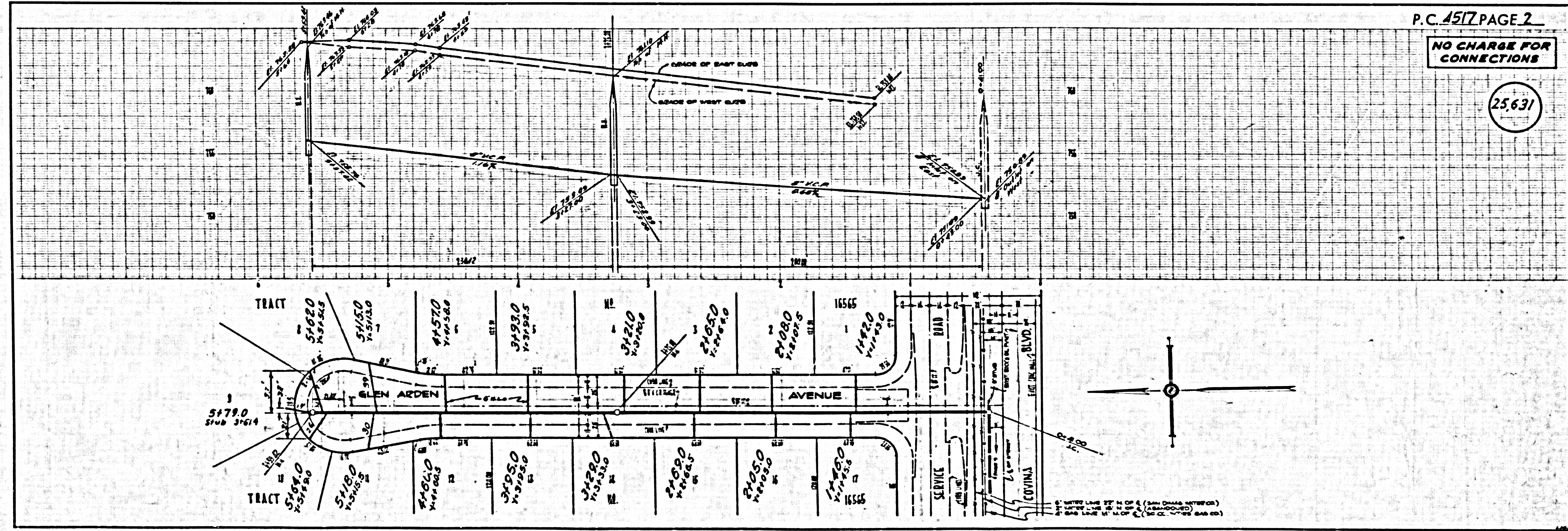
COUNTY OF LOS ANGELES, CALIFORNIA

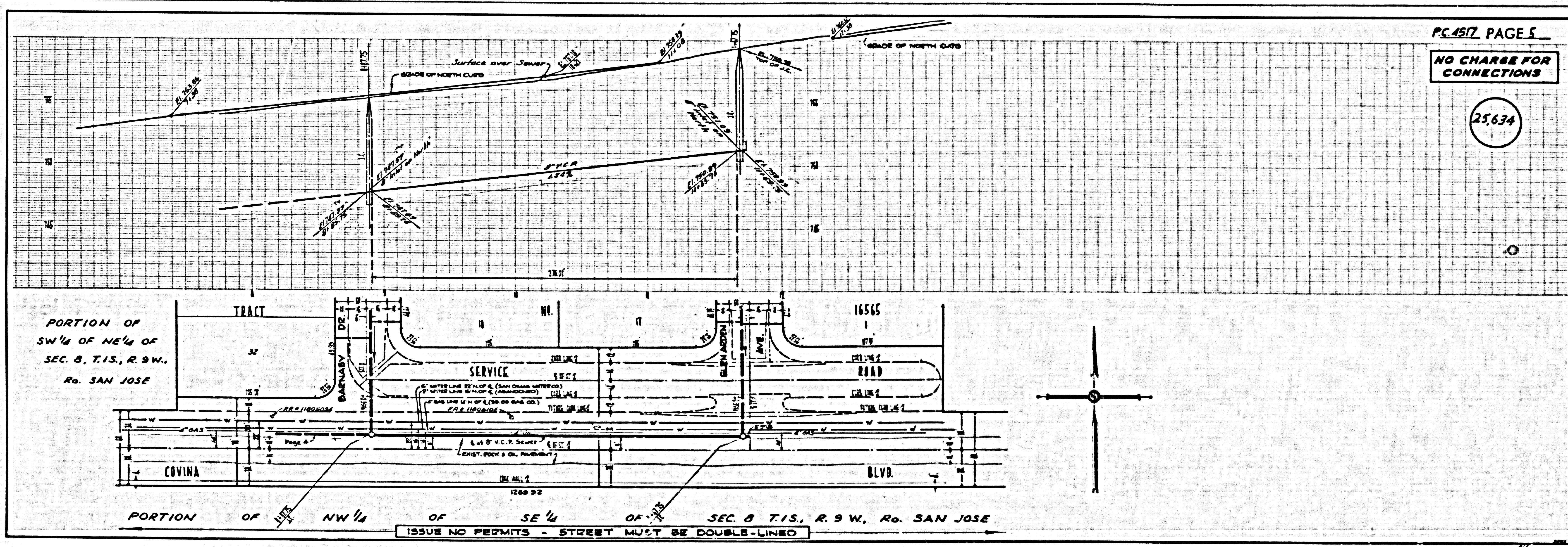
APPROVED, JOHN A. LAMBE, COUNTY ENGINEER
APPROVED, A. M. RAWNS, CHIEF ENGINEER
ED. BARKER NO. 22
OFFICE ENGINEER

BY *John A. Lambe* *A. M. Rawns*
SANITATION ENGINEER OFFICE ENGINEER

CHECKED BY *S.K. Ouda 10-24-57*
OFFICE OF COUNTY ENGINEER 875 C. E. NO. 3406

ALL GRADES REVISIONS UNDER AUTHORITY OF
BY *S.K. Ouda 1-13-58*
REVISIONS APPROVED *S.K. Ouda 1-13-58*
SCALE OF WORK SHEETS 1"=40' HORIZ. 1"=4' VERT.





PC.4517 PAGE 5

NO CHARGE FOR CONNECTIONS

25,634

PORTION OF SW 1/4 OF NE 1/4 OF SEC. 8, T.1S., R.9W., Co. SAN JOSE

PORTION OF NW 1/4 OF SE 1/4 OF SEC. 8 T.1S., R.9W., Co. SAN JOSE

ISSUE NO PERMITS - STREET MUST BE DOUBLE-LINED

PC.4517 3