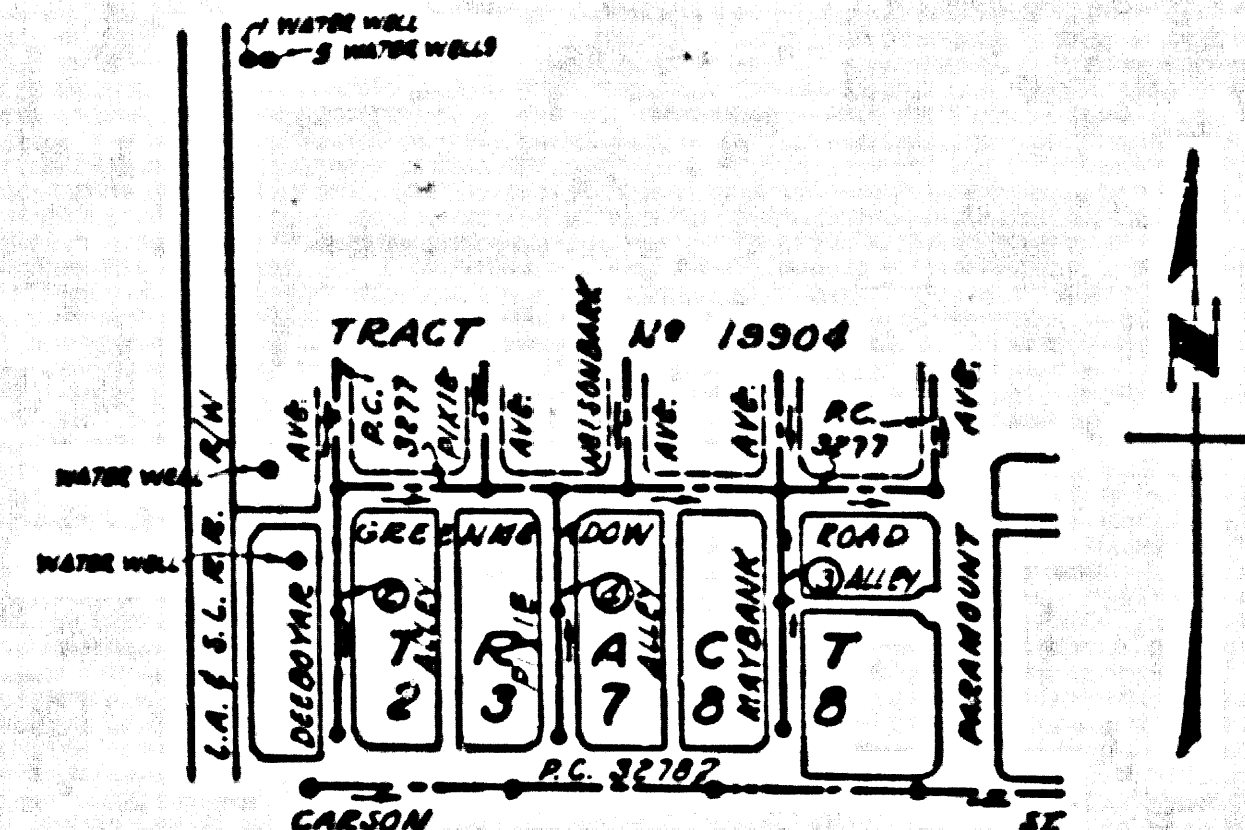


BM - L&T in curbs 1/2 S. of curb return of SE corner of Orange Ave. & South St. S.Y. 3638 Vol. 10 Page 122-1954 Adj. Elev. 61.706 Co. Surveyors Precise 1955 Adj. Elev. 60.763

NOTE: Subtract 0.55' from all Elev. Shown on plans to meet above Co. Precise Elev. 1955 Adj.

NO CHARGE FOR CONNECTIONS
Date 10-1-57



INDEX MAP
TRACT NO. 23788
P.C. 4518
Scale 1" = 400'

BELLFLOWER BLDG. DIST. NO. 4

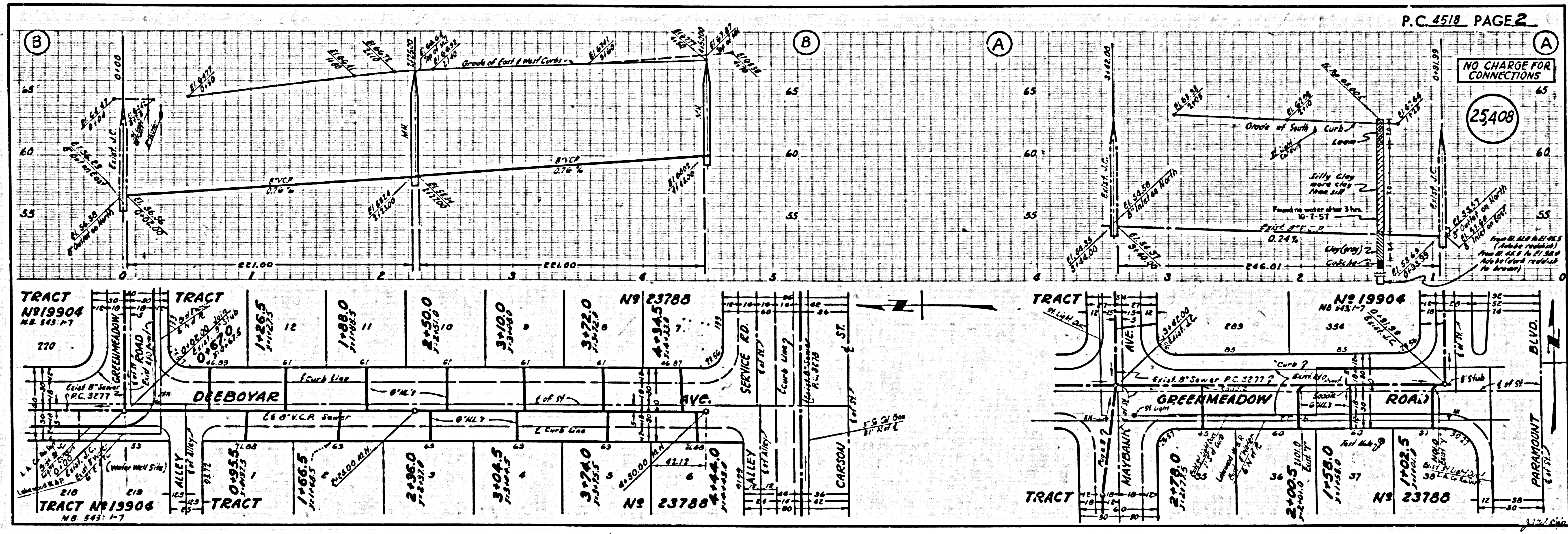
- NOTES:
- PROFILES SHOWN ON THE PROPERTY LINE OR PROPERTY LINE PRODUCED AT HOME ANGLES TO THE DRIVE LINE AT THE CENTER LINE OF EACH DRIVEWAY.
 - NO DIMENSIONS OF THE CITY ENGINEER WILL BE GIVEN ON ANY PORTION OF THE WORK.
 - THE ENGINEER OR HIS AUTHORIZED REPRESENTATIVE SHALL FURNISH THE CITY ENGINEER WITH GRADE SHEETS AND STATION FOR ALL HOUSE LATERALS AND T BRANCHES AND SHALL FURNISH STAGES FOR THEM AT THEIR PROPER LOCATIONS IN STATIONS AND PLACES SHOWN. ANY CHANGE IN LOCATION SHALL BE INDICATED BY WRITING BY THE OWNER ON THE REPRESENTATIVE. ALL STATIONS SHALL BE MADE IN THREE PLACES WITHIN THE APPROVAL OF THE CITY ENGINEER.
 - USE STANDARD STANDARD PLANS AND COVERS, 8-1/2" X 11", EXCEPT AS NOTED.
 - USE STANDARD STANDARD PIPE EXCEPT AS NOTED.
 - USE JOINT COMPACT FOR ALL VENTERS CLAY PIPE JOINTS.
 - REPAIRS AND REPAIRS WITHIN PAVED LANE TO MEET CITY OF LAKEWOOD SPEC. ON CAMP. STATE HIGHWAY DIST. ENGINEERING IN ACCORDANCE WITH PLANS.
 - INDICATE FOUR FEET OF DRIVE AT POINTS OF INTERFERENCE WITH POLES, CASE #1, P-2-72.
 - HOUSE LATERALS TO BE CONSTRUCTED WITH INVERTS AT PROPERTY LINE. ALL HOUSE LATERALS SHALL BE MADE EXCEPT AS NOTED.
 - ALL STRUCTURES SHALL BE BUILT BY THE CONTRACTOR. ALL STRUCTURES SHALL BE MADE EXCEPT AS NOTED.
 - FOR APPROVAL GRADES USE THE FOLLOWING INFORMATION: 1. 2% SLOPE, 2% SLOPE, 2% SLOPE, 2% SLOPE.
 - STANDARD TYPE OF UNIMPROVED DRIVEWAY TO BE 4' ABOVE FINISHED GRADE.
 - THE PRIVATE ENGINEER IS TO FURNISH THE HOUSE LATERAL DEPTH AT THE PROPERTY LINE BELOW THE TOP OF CURB ELEVATION FOR EACH HOUSE LATERAL ON THE GRADE SHEET.

NOTE: THE CONTRACTOR SHALL NOTIFY THE CONSTRUCTION AND THE STORM DRAIN DIVISION BY TELEPHONE, MADISON 8-2787, EXT. 342, AT LEAST 24 HOURS BEFORE STARTING ANY WORK UNDER THIS CONTRACT.

ENGINEERING SERVICE CORPORATION 1127 W. WASHINGTON BLVD. LOS ANGELES 15, CALIF. RE. 9-7281	
REVISIONS	TRACED BY: <u>ESP E.H.</u>
	DES'G'D BY: <u>ESP E.H.</u>
	CK'D BY: <u>ESP</u>
	SUBMITTED: <u>HI</u>
SUB STRUCTURES OK'D	
U. S. NO.	DRAW. NO.
5033-173	JULY, 1957
DATE	SCALE
JULY, 1957	As Noted
L.S.	P.S.

PROFILE ALIGNMENT AND GRADE OF **P.C. 4518**
SANITARY SEWERS PAGE **1**
 TO BE CONSTRUCTED IN
TRACT NO. 23788 (25407)
PRIVATE CONTRACT NO. 4518
 W.S. 30
 2 SHEETS, 4 PAGES
 SCALE: HORIZ. 1" = 40' VERT. 1" = 4'
 PREPARED BY THE OFFICES OF
ENGINEERING SERVICE CORPORATION
 BY E.P. Koenig REG. C.E. NO. 8622
 FOR LEGEND SEE PLAN NO. S-A-64

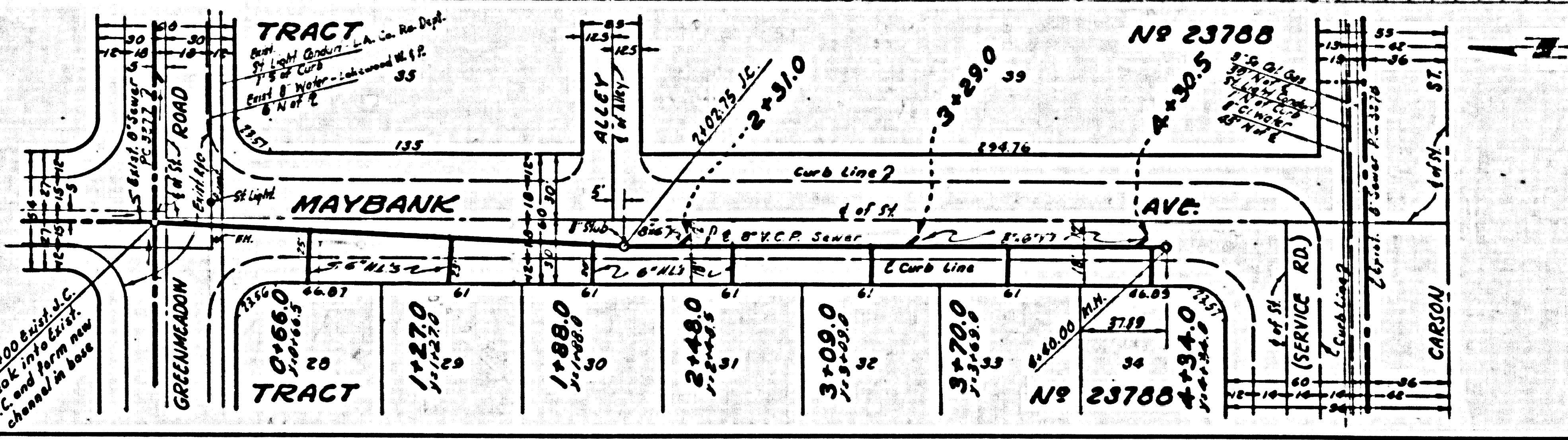
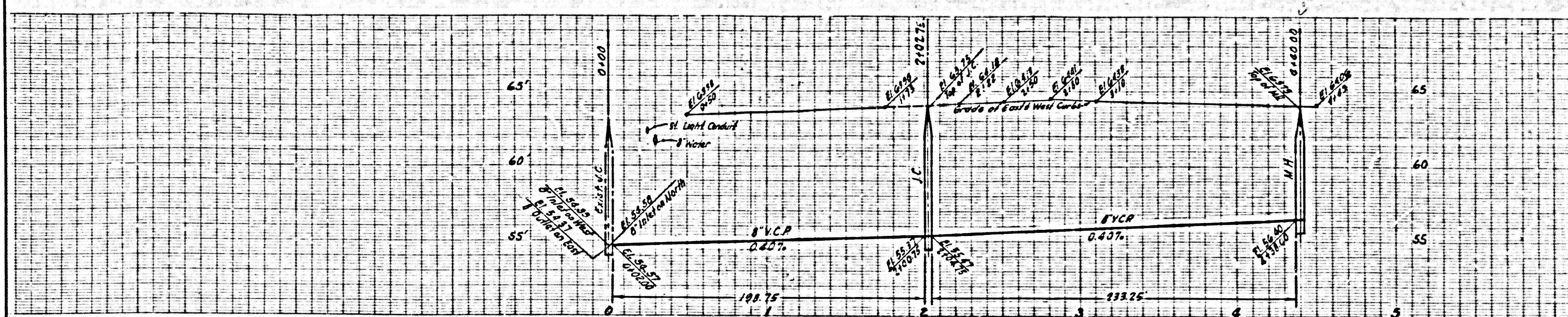
NOTES:
 GRADES TO WHICH THIS IMPROVEMENT IS TO BE CONSTRUCTED ARE SHOWN ON PLANS AND PROFILES. GRADE POINTS FOR TOP OF CURB, CENTER LINE OF STREET, OR CENTER LINE OF ALLEY ARE SHOWN BY CIRCLES ON PROFILES AT ALL POINTS BETWEEN REGULAR POINTS. THE GRADE SHALL BE ESTABLISHED SO AS TO CONFORM TO A STRAIGHT LINE BETWEEN SAID REGULAR POINTS.
 ELEVATIONS ARE IN FEET ABOVE U.S.C. & G.S. MEAN SEA LEVEL DATUM OF 1929.
 THE DRAWING AND THE DATA HEREON ARE HEREBY MADE A PART OF THE SPECIFICATIONS.
 BEFORE WORK CAN BE STARTED, THE CONTRACTOR SHALL OBTAIN A PERMIT TO EXCAVATE IN CITY STREETS FROM THE CITY OF LAKEWOOD. SUCH PERMIT, THE COST OF WHICH SHALL BE PAID BY THE CONTRACTOR, SHALL BE OBTAINED FROM THE CITY ENGINEER'S OFFICE. THE CONTRACTOR SHALL OBTAIN A PERMIT TO EXCAVATE IN CITY STREETS FROM THE CITY OF LAKEWOOD. SUCH PERMIT, THE COST OF WHICH SHALL BE PAID BY THE CONTRACTOR, SHALL BE OBTAINED FROM THE CITY ENGINEER'S OFFICE. THE CONTRACTOR SHALL OBTAIN A PERMIT TO EXCAVATE IN CITY STREETS FROM THE CITY OF LAKEWOOD. SUCH PERMIT, THE COST OF WHICH SHALL BE PAID BY THE CONTRACTOR, SHALL BE OBTAINED FROM THE CITY ENGINEER'S OFFICE.
 APPROVED, JOHN A. LAMME, CITY ENGINEER
 APPROVED, A. H. SAWYER, CHIEF ENGINEER
 BY E.P. Koenig ENGINEERING SERVICE CORPORATION
 BY A.H. Sawyer CITY ENGINEER
 CHECKED BY E.P. Koenig 10-1-57
 OFFICE OF CITY ENGINEER, 1127 W. WASHINGTON BLVD., LOS ANGELES 15, CALIF.



NO CHARGE FOR CONNECTIONS
(25408)

NO CHARGE FOR CONNECTIONS

25,409



NO CHARGE FOR CONNECTIONS

25,410

